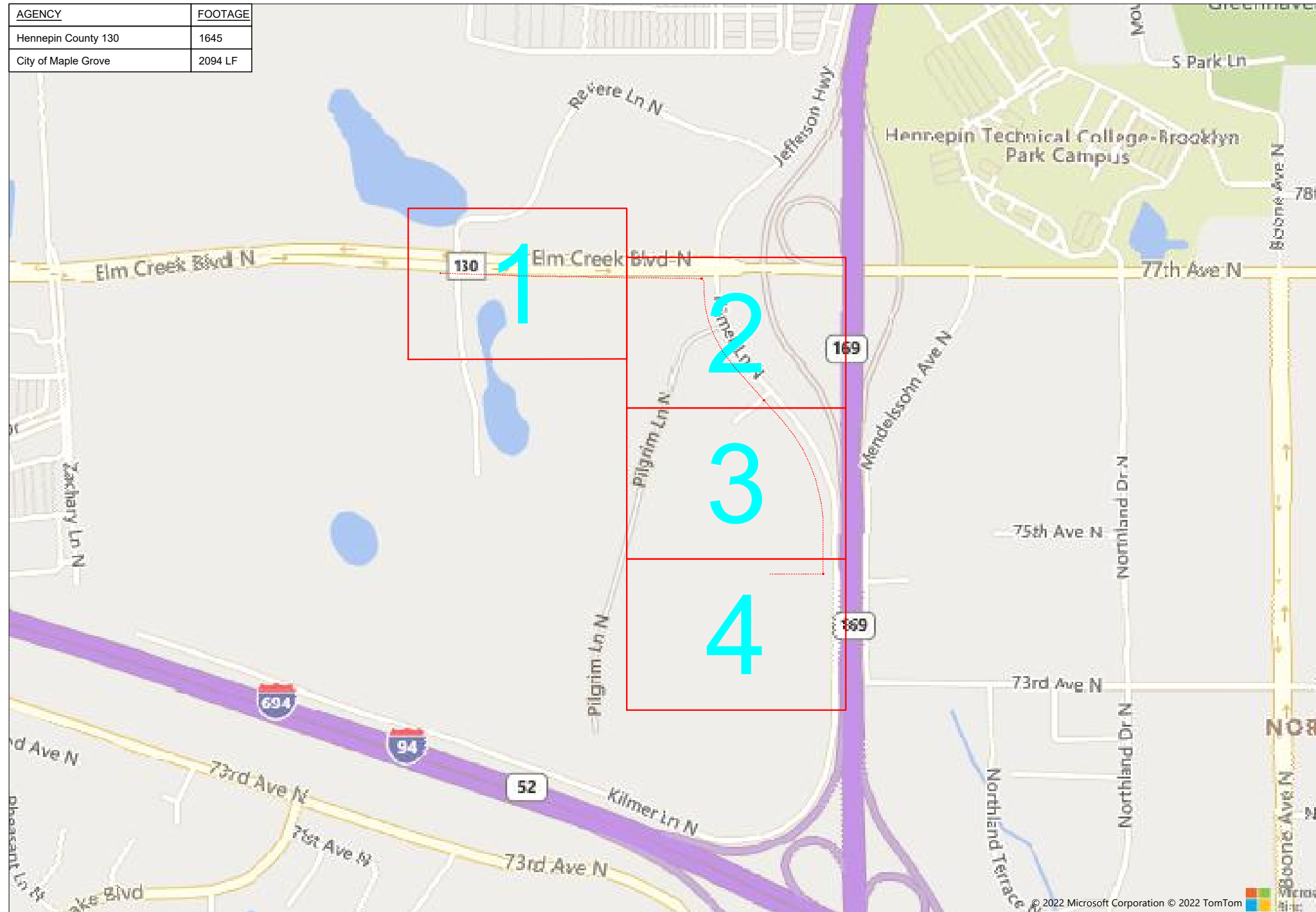


98118 Comcast LSC Communications

AGENCY	FOOTAGE
Hennepin County 130	1645
City of Maple Grove	2094 LF



7401 Kilmer Lane North, Maple Grove, MN 55369



1" = 100'

Route	98118 Comcast
City	Maple Grove
County	Hennepin
Filename	98118 Comcast LSC
Work Order #	98118



160 2nd St SW
Perham, MN 56573
(218) 346-5500

TRACKING

Staked By:	BA	4/28/22
Drafted By:	WJT	5/12/22
Project Manager	Kelly Bard	763-270-6179
As-Built By:	-	-
Revision	-	-

Construction Totals	
Route Footage	4076'
Total Underground	4076'
Total Aerial	0'
Underground (New)	4076'
Aerial (New)	0'
Overpull (Ex Duct)	0'
Overlash (Ex Strand)	0'
Plow	0'
Bore	4076'
New Vaults	3
New Peds	0

GSOC
GOPHER STATE ONE CALL
1-800-252-1116
www.gopherstateonecall.org

Prepared by:
 compass consultants inc.
Perham, MN 218-346-3600
TrustCompass.com

OVERVIEW

Legend

Fiber Linetypes

	Proposed Underground Fiber - Bore
	Proposed Underground Fiber - Plow
	Proposed UG Fiber in Existing Duct
	Existing Underground Fiber
	Proposed Aerial Fiber
	Proposed Aerial Overlash
	Existing Aerial Fiber
	Proposed Aerial Strand
	Existing Aerial Strand

Other Linetypes

	Rail Road
	Fence
	Retaining Wall
	Storm Sewer
	Sanitary Sewer
	Gas Line
	Tele./Comm. Line
	Water Line
	Electric Line
	Street light/Traffic signal
	District Cooling
	District Heating
	Force Main
	Other Utility or Unknown
	Utility Easement

Abbreviations

- CL - Center Line
- R/W - Right of Way
- BOC - Back of Curb
- FC - Front of Curb
- EOR - Edge of Road
- S/W - Sidewalk
- HH - Handhole
- MH - Manhole
- PRT - Preterminated Cable
- PRG - Pigtail Cable

Symbols

	Proposed Handhole
	Existing Handhole
	Reference Handhole
	Manhole
	Proposed Cabinet
	Existing Cabinet
	Bore Pit
	Proposed Splice Point
	Existing Splice Point
	Power Pole
	Proposed Slack Coil
	Existing Slack Coil
	Proposed Anchor/Down Guy
	Existing Anchor/Down Guy
	Proposed Riser
	Existing Riser
	Aerial Bond
	Aerial Ground
	BM53T - Fiber Marker
	BM53 - Fiber Marker
	Proposed PED
	Existing PED
	Proposed Splice Case
	Existing Splice Case
	Street Light
	Traffic Light
	Traffic Light
	Transformer
	Hydrant
	Catch Basin
	Tree

Materials	
48 Fiber	4501
1.25" Duct	7815
Vault (24x30)	3
Ground Rod	3



1" = -

Route	98118 Comcast
City	Maple Grove
County	Hennepin
Filename	98118 Comcast LSC
Work Order #	98118



160 2nd St SW
Perham, MN 56573
(218) 346-5500

TRACKING

Staked By:	BA	4/28/22
Drafted By:	WJT	5/12/22
Project Manager	Kelly Bard	763-270-6179
As-Built By:	-	-
Revision	-	-

Construction Totals	
Route Footage	4076'
Total Underground	4076'
Total Aerial	0'
Underground (New)	4076'
Aerial (New)	0'
Overpull (Ex Duct)	0'
Overlash (Ex Strand)	0'
Plow	0'
Bore	4076'
New Vaults	3
New Peds	0

GSOC
GOPHER STATE ONE CALL
1-800-252-1116
www.gopherstateonecall.org

Prepared by:
 compass consultants inc.
Perham, MN 218-346-3600
TrustCompass.com

LEGEND

Existing Access Points



68217-01



68217-01



1" = -

Route	98118 Comcast
City	Maple Grove
County	Hennepin
Filename	98118 Comcast LSC
Work Order #	98118



160 2nd St SW
Perham, MN 56573
(218) 346-5500

TRACKING

Staked By:	BA	4/28/22
Drafted By:	WJT	5/12/22
Project Manager	Kelly Bard	763-270-6179
As-Built By:	-	-
Revision	-	-

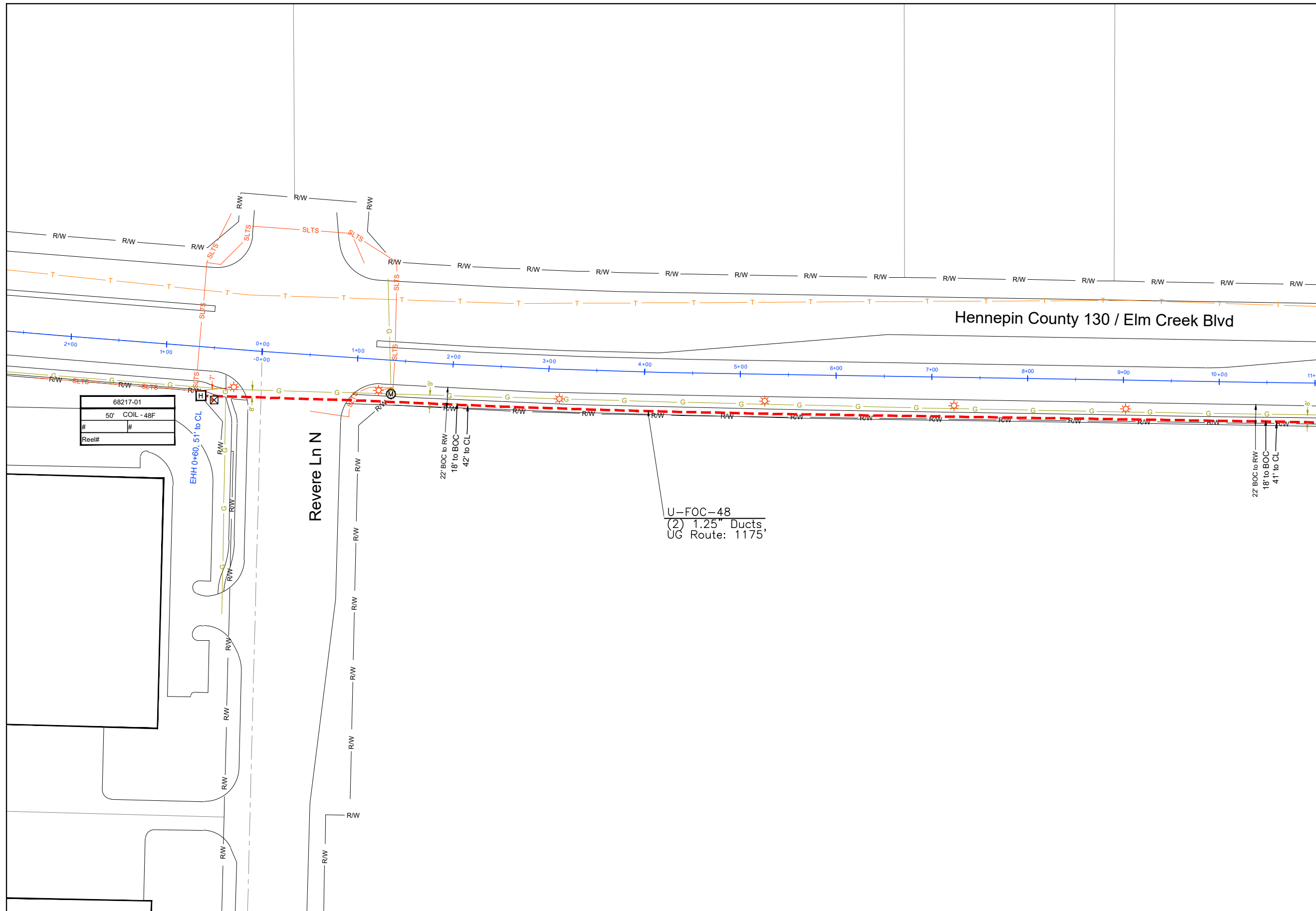
GSOC

GOPHER STATE ONE CALL
1-800-252-1116
www.gopherstateonecall.org



Prepared by:
Perham, MN 218-346-3600
TrustCompass.com

EXISTING AP



1" = 100'

Route	98118 Comcast
City	Maple Grove
County	Hennepin
Filename	98118 Comcast LSC
Work Order #	98118

arvig

160 2nd St SW
 Perham, MN 56573
 (218) 346-5500

TRACKING	
Staked By:	BA 4/28/22
Drafted By:	WJT 5/12/22
Project Manager	Kelly Bard 763-270-6179
As-Built By:	-
Revision	-

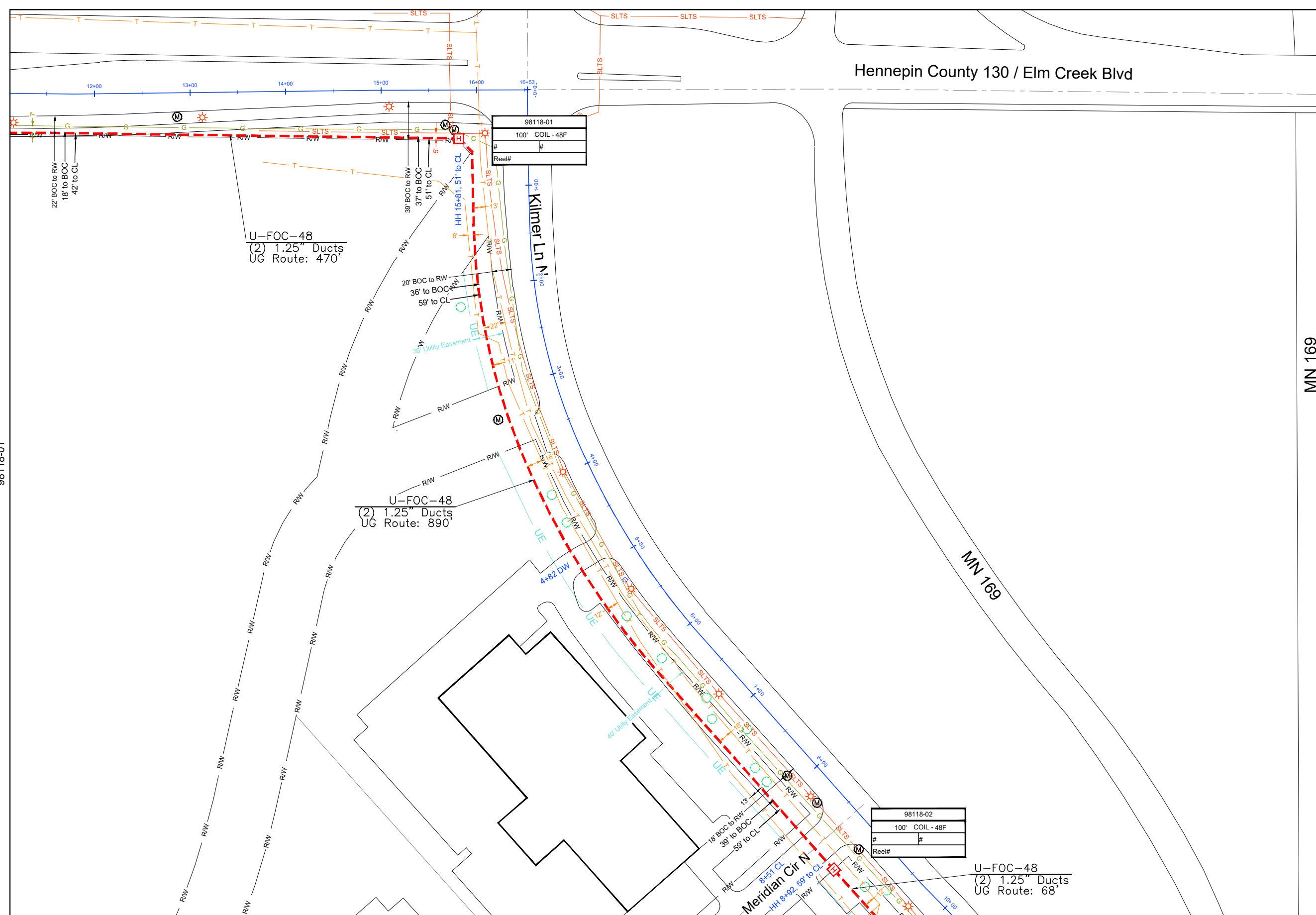
98118-02

GSOC
 GOPHER STATE ONE CALL
 1-800-252-1116
 www.gopherstateonecall.org

Prepared by:

compass
 consultants inc.
 Perham, MN 218-346-3600
 TrustCompass.com

98118-01



98118-01

98118-03

MN 169

Hennepin County 130 / Elm Creek Blvd



1" = 100'

Route	98118 Comcast
City	Maple Grove
County	Hennepin
Filename	98118 Comcast LSC
Work Order #	98118



160 2nd St SW
Perham, MN 56573
(218) 346-5500

TRACKING

Staked By:	BA	4/28/22
Drafted By:	WJT	5/12/22
Project Manager	Kelly Bard	763-270-6179
As-Built By:	-	-
Revision	-	-

GSOC

GOPHER STATE ONE CALL
1-800-252-1116
www.gopherstateonecall.org



98118-02

98118-02

Meridian Cir N

Kilmer Ln N

U-FOC-48
(2) 1.25" Ducts
UG Route: 1042'

19' BOC to RW
36' to BOC
59' to CL

33' BOC to RW
36' to BOC
59' to CL

28' BOC to RW
37' to BOC
59' to CL

98118-04



1" = 100'

Route
98118 Comcast

City
Maple Grove

County
Hennepin

Filename
98118 Comcast LSC

Work Order #
98118



160 2nd St SW
Perham, MN 56573
(218) 346-5500

TRACKING

Staked By:
BA 4/28/22

Drafted By:
WJT 5/12/22

Project Manager
Kelly Bard 763-270-6179

As-Built By:
- -

Revision
- - -

MN 169

GSOC

GOPHER STATE ONE CALL
1-800-252-1116
www.gopherstateonecall.org

Prepared by:



Perham, MN 218-346-3600
TrustCompass.com

98118-03

98118-03

7401 Kilmer Ln N	
75' COIL - 48F	
#	#
Reel#	

Intercept Existing Duct End

U-FOC-48
(2) 1.25" Ducts
UG Route: 94'

28' BOC to RW
37' to BOC
59' to CL

10' Utility Easement

HH 21+38, 59' to CL

U-FOC-48
(1) 1.25" Ducts
UG Route: 337'

22+33 DW

UE

RW

UE

RW

UE

RW

UE

RW

UE

RW

UE

RW

UE

RW

UE

RW

UE

RW

UE

RW

UE

RW

UE

RW

UE

RW

UE

RW

UE

RW

UE

RW

Kilmer Ln N

MN 169



1" = 100'

Route	98118 Comcast
City	Maple Grove
County	Hennepin
Filename	98118 Comcast LSC
Work Order #	98118

 **arvig**

160 2nd St SW
Perham, MN 56573
(218) 346-5500

TRACKING	
Staked By:	
BA	4/28/22
Drafted By:	
WJT	5/12/22
Project Manager	
Kelly Bard	763-270-6179
As-Built By:	-
Revision	-

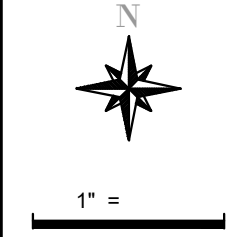
GSOC
GOPHER STATE ONE CALL
1-800-252-1116
www.gopherstateonecall.org

Prepared by:

 **compass**
consultants inc.
Perham, MN 218-346-3600
TrustCompass.com

98118-04

Date	From Vault	To Vault	Cable/Duct	Reel Number	Start #	End #	Total	Notes:



Route
98118 Comcast

City
Maple Grove

County
Hennepin

Filename
98118 Comcast LSC

Work Order #
98118



TRACKING

Staked By:
BA 4/28/22

Drafted By:
WJT 5/12/22

Project Manager
Kelly Bard 763-270-6179

As-Built By:
- -

Revision
- -

Vault Size	Vault #	Ground Rod	Vault Size	Vault #	Ground Rod	Vault Size	Vault #	Ground Rod
Vault			Vault			Vault		
Vault			Vault			Vault		
Vault			Vault			Vault		
Vault			Vault			Vault		
Locate Post								
Fiber Marker								
Tracer Wire								

FOR CONSTRUCTION USE ONLY

GSOC
GOPHER STATE ONE CALL
1-800-252-1116
www.gopherstateonecall.org

Prepared by:
 **compass**
consultants inc.
Perham, MN 218-346-3600
TrustCompass.com

Tally Sheet