



**Evanswood Infrastructure Improvements  
Maple Grove, MN  
Lumen Facilities  
Reviewed by RJ Allison on 06/29/2022**

Below are the following Lumen conflicts as part of the Evanswood Infrastructure Improvements Project in Maple Grove, MN.

**Stantec:** Cody Blehr (701.202.8273)  
**Terra Technologies:** RJ Allison (612.388.7375)  
**Lumen:** Marcie DeMaio (651.302.9778)

**Construction Date:** May 2022  
**County:** Hennepin

**Wire Center:** MPGVMNXA  
**Zip Code:** 55311

01. Arbor Ridge Pkwy (101<sup>st</sup> Ave N), STA 35+75 to STA 37+50 (RT), Sheet C4.01  
Conflict: Existing 25 pair aerial attached to Lumen poles scheduled for removal.  
Solution: Lumen to cut aerial cable from service & remove. Lumen to bore new 25 pair according to callouts and linework on work plan.
02. Arbor Ridge Pkwy (101<sup>st</sup> Ave N), STA 37+50 (RT), Sheet C4.01  
Conflict: Existing pole in conflict with proposed grading and future trail construction.  
Solution: Lumen to remove pole.
03. Arbor Ridge Pkwy (101<sup>st</sup> Ave N), STA 37+50 (LT to RT), Sheet C4.01  
Conflict: Existing 25 pair in conflict with proposed storm sewer.  
Solution: Lumen to cut cable from service and remove. Lumen to bore new 25 pair across the road at 5' below existing grade and continue bore for approximately 60' along existing ROW edge to splice into existing 25 pair.
04. Arbor Ridge Pkwy (101<sup>st</sup> Ave N), STA 37+50 to STA 39+60 (RT), Sheet C4.01  
Conflict: Existing 25 pair aerial attached to Lumen poles scheduled for removal.  
Solution: Lumen to cut aerial cable from service & remove. Lumen to bore new service according to callouts and linework on work plan.
05. Arbor Ridge Pkwy (101<sup>st</sup> Ave N), STA 39+60 (RT), Sheet C4.01  
Conflict: Existing pole in conflict with proposed grading and future trail construction.  
Solution: Lumen to remove pole.
06. Arbor Ridge Pkwy (101<sup>st</sup> Ave N), STA 39+60 to STA 41+50 (RT), Sheet C4.01  
Conflict: Existing 25 pair aerial attached to Lumen poles scheduled for removal.  
Solution: Lumen to cut aerial cable from service & remove. Lumen to bore new service according to callouts and linework on work plan.
07. Arbor Ridge Pkwy (101<sup>st</sup> Ave N), STA 41+50 (RT), Sheet C4.01  
Conflict: Existing pole in conflict with proposed grading and future trail construction.  
Solution: Lumen to remove pole.

08. Arbor Ridge Pkwy (101<sup>st</sup> Ave N), STA 41+50 to STA 43+40 (RT), Sheet C4.01 to C4.02  
Conflict: Existing 25 pair aerial attached to Lumen poles scheduled for removal.  
Solution: Lumen to cut aerial cable from service & remove. Lumen to bore new service according to callouts and linework on work plan.
09. Arbor Ridge Pkwy (101<sup>st</sup> Ave N), STA 43+40 (RT), Sheet C4.02  
Conflict: Existing pole in conflict with proposed grading and future trail construction.  
Solution: Lumen to remove pole.
10. Arbor Ridge Pkwy (101<sup>st</sup> Ave N), STA 43+40 to STA 45+40 (RT), Sheet C4.02  
Conflict: Existing 25 pair aerial attached to Lumen poles scheduled for removal.  
Solution: Lumen to cut aerial cable from service & remove. Lumen to bore new service according to callouts and linework on work plan.
11. Arbor Ridge Pkwy (101<sup>st</sup> Ave N), STA 45+40 (RT), Sheet C4.02  
Conflict: Existing pole in conflict with proposed grading and future trail construction.  
Solution: Lumen to remove pole.
12. Arbor Ridge Pkwy (101<sup>st</sup> Ave N), STA 45+40 to STA 47+60 (RT), Sheet C4.02  
Conflict: Existing 25 pair aerial attached to Lumen poles scheduled for removal.  
Solution: Lumen to cut aerial cable from service & remove. Lumen to bore new service according to callouts and linework on work plan.
13. Arbor Ridge Pkwy (101<sup>st</sup> Ave N), STA 47+60 (RT), Sheet C4.02  
Conflict: Existing pole in conflict with proposed grading and future trail construction.  
Solution: Lumen to remove pole and buried service wire drop.
14. Arbor Ridge Pkwy (101<sup>st</sup> Ave N), STA 47+60 to STA 48+80 (RT), Sheet C4.02  
Conflict: Existing 25 pair aerial attached to Lumen poles scheduled for removal.  
Solution: Lumen to cut aerial cable from service & remove. Lumen to bore new service according to callouts and linework on work plan.
15. Arbor Ridge Pkwy (101<sup>st</sup> Ave N), STA 48+80 (RT), Sheet C4.02  
Conflict: Existing pole in conflict with proposed grading and future trail construction.  
Solution: Lumen to remove pole.
16. Arbor Ridge Pkwy (101<sup>st</sup> Ave N), STA 48+80 to STA 50+60 (RT), Sheet C4.02 to C4.03  
Conflict: Existing 25 pair aerial attached to Lumen poles scheduled for removal.  
Solution: Lumen to cut aerial cable from service & remove. Lumen to bore new service according to callouts and linework on work plan.
17. Arbor Ridge Pkwy (101<sup>st</sup> Ave N), STA 50+60 (RT), Sheet C4.03  
Conflict: Existing pole in conflict with proposed grading and future trail construction.  
Solution: Lumen to remove pole.
18. Arbor Ridge Pkwy (101<sup>st</sup> Ave N), STA 50+60 to STA 52+50 (RT), Sheet C4.03  
Conflict: Existing 25 pair aerial attached to Lumen poles scheduled for removal.  
Solution: Lumen to cut aerial cable from service & remove. Lumen to bore new service according to callouts and linework on work plan.
19. Arbor Ridge Pkwy (101<sup>st</sup> Ave N), STA 52+50 (RT), Sheet C4.03  
Conflict: Existing pole in conflict with proposed grading and future trail construction.  
Solution: Lumen to remove pole.

20. Arbor Ridge Pkwy (101<sup>st</sup> Ave N), STA 52+50 (RT), Sheet C4.03  
Conflict: Existing buried service wire in conflict with pole removal.  
Solution: Lumen to place new pedestal and buried service wire at STA 51+50 as shown in the work plan.
21. Arbor Ridge Pkwy (101<sup>st</sup> Ave N), STA 52+50 to STA 54+25 (RT), Sheet C4.03  
Conflict: Existing 25 pair aerial attached to Lumen poles scheduled for removal.  
Solution: Lumen to cut aerial cable from service & remove. Lumen to bore new service according to callouts and linework on work plan.
22. Arbor Ridge Pkwy (101<sup>st</sup> Ave N), STA 54+25 (RT), Sheet C4.03  
Conflict: Existing pole in conflict with proposed grading and future trail construction.  
Solution: Lumen to remove pole.
23. Arbor Ridge Pkwy (101<sup>st</sup> Ave N), STA 54+25 to STA 56+10 (RT), Sheet C4.03  
Conflict: Existing 25 pair aerial attached to Lumen poles scheduled for removal.  
Solution: Lumen to cut aerial cable from service & remove. Lumen to bore new service according to callouts and linework on work plan.
24. Arbor Ridge Pkwy (101<sup>st</sup> Ave N), STA 56+10 (RT), Sheet C4.03  
Conflict: Existing pole in conflict with proposed grading and future trail construction.  
Solution: Lumen to remove pole.
25. Arbor Ridge Pkwy (101<sup>st</sup> Ave N), STA 56+10 to STA 59+25 (LT to RT), Sheet C4.03 to C4.04  
Conflict: Existing aerial service wire attached to Lumen and Xcel poles scheduled for removal.  
Solution: Lumen to cut aerial cable from service & remove.
26. Arbor Ridge Pkwy (101<sup>st</sup> Ave N), STA 56+10 to STA 58+25 (RT), Sheet C4.03 to C4.04  
Conflict: Existing 25 pair aerial attached to Lumen poles scheduled for removal.  
Solution: Lumen to cut aerial cable from service & remove. Lumen to bore new service according to callouts and linework on work plan.
27. Arbor Ridge Pkwy (101<sup>st</sup> Ave N), STA 58+25 (RT), Sheet C4.04  
Conflict: Existing pole in conflict with proposed grading and future trail construction.  
Solution: Lumen to remove pole.
28. Arbor Ridge Pkwy (101<sup>st</sup> Ave N), STA 58+25 to STA 60+30 (RT), Sheet C4.04  
Conflict: Existing 25 pair aerial attached to Lumen poles scheduled for removal.  
Solution: Lumen to cut aerial cable from service & remove. Lumen to bore new service according to callouts and linework on work plan.
29. Arbor Ridge Pkwy (101<sup>st</sup> Ave N), STA 60+30 (RT), Sheet C4.04  
Conflict: Existing pole in conflict with proposed roundabout.  
Solution: Lumen to remove pole.
30. Arbor Ridge Pkwy (101<sup>st</sup> Ave N), STA 60+30 to STA 62+50 (RT), Sheet C4.04  
Conflict: Existing 25 pair aerial attached to Lumen poles scheduled for removal.  
Solution: Lumen to cut aerial cable from service & remove. Lumen to bore new service according to callouts and linework on work plan.
31. Arbor Ridge Pkwy (101<sup>st</sup> Ave N), STA 62+50 (RT), Sheet C4.04  
Conflict: Existing pole in conflict with proposed grading and future trail construction.  
Solution: Lumen to remove pole.

32. Arbor Ridge Pkwy (101<sup>st</sup> Ave N), STA 62+50 to Sheet Supp-1 (RT), Sheet C4.04 to Supp-1  
Conflict: Existing 25 pair aerial attached to Lumen poles scheduled for removal.  
Solution: Lumen to cut aerial cable from service & remove. Lumen to bore new service according to callouts and linework on work plan.

**CITY OF MAPLE GROVE, MN - HENNEPIN COUNTY**  
**EVANSWOOD INFRASTRUCTURE IMPROVEMENTS**  
 LOCATED ON 101ST AVE N FROM TROY LN N TO LAWNDALE LN N

**LUMEN WORK PLAN**  
**PROJECT N.974575 / TERR-1006777**

PLANS PREPARED FOR



LUMEN ENGINEER: BILL BYERS  
 EMAIL: BILL.BYERS@LUMEN.COM  
 PHONE: 651.829.5383  
 LUMEN CONSTRUCTION CONTACT: MARCIE DEMAIO  
 EMAIL: MARCIE.DEMAIO@LUMEN.COM  
 PHONE: 651.302.9778  
 WIRECENTER: MPGVMNXA

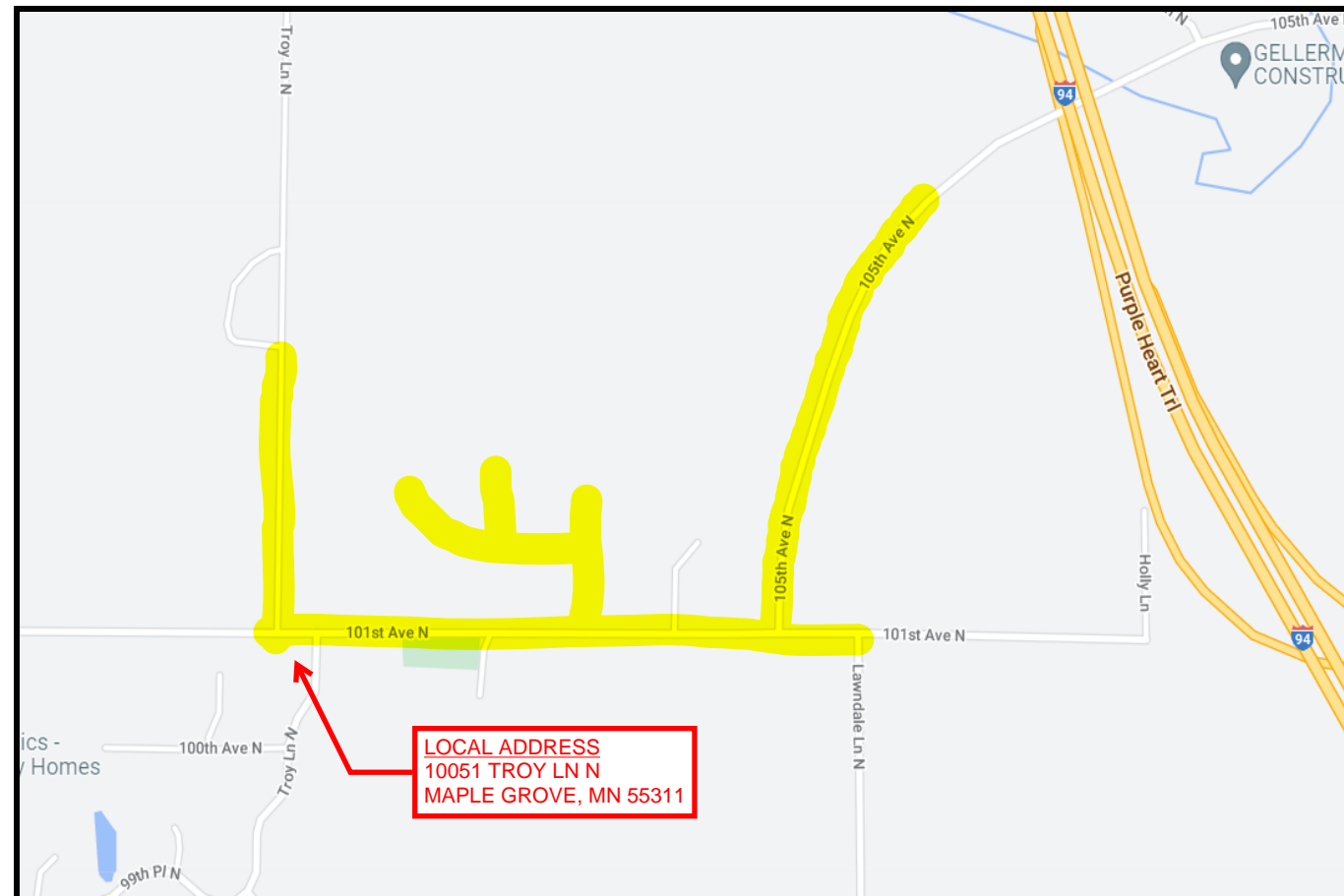
PLANS PREPARED BY



TT ENGINEER: RJ ALLISON  
 PHONE: 612.388.7375  
 EMAIL: RALLISON@TERRATECHLLC.NET

PROJECT CONTACT

OWNER: KELLY MATZKE - CITY OF MAPLE GROVE  
 PHONE: 763.494.6365  
 EMAIL: KMATZKE@MAPLEGROVEMN.GOV  
 PROJECT ENGINEER: ANDREW BOYLE - STANTEC  
 PHONE: TBD  
 EMAIL: ANDREW.BOYLE@STANTEC.COM  
 SURVEY/STAKING: KELLY MATZKE - CITY OF MAPLE GROVE  
 PHONE: 763.494.6365  
 EMAIL: KMATZKE@MAPLEGROVEMN.GOV  
 ROAD CONTRACTOR: CODY BLEHR - STANTEC  
 PHONE: 701.202.8273  
 EMAIL: CODY.BLEHR@STANTEC.COM



LOCATION MAP  
 NOT TO SCALE

**FOR REFERENCE ONLY**

PERMITS REQUIRED:  YES  NO

CITY: MAPLE GROVE

COUNTY:

STATE:

RAILROAD:

PIPELINE:

DNR:

MISCELLANEOUS:

CUTS REQUIRED:  YES  NO

FIBER OPTIC

COPPER

MIGRATIONS REQUIRED:  YES  NO

PRECONSTRUCTION MEETING DATE: UNK

EXPECTED ROADWAY CONSTRUCTION START DATE: 7/1/22

NOTES:

ALL EXISTING AND PROPOSED CONDITIONS ARE BASED ON INFORMATION PROVIDED BY OTHERS. LUMEN CANNOT BE RESPONSIBLE FOR THE ACCURACY OF INFORMATION AND/OR PLANS PROVIDED BY OUTSIDE PARTIES. FACILITY LOCATIONS, DEPTHS AND ELEVATIONS SHOULD BE FIELD VERIFIED PRIOR TO CONSTRUCTION.

PROPOSED DESIGN MODIFICATIONS ARE RECOMMENDATIONS ONLY AND SHOULD BE VERIFIED PRIOR TO CONSTRUCTION.

REVISION	DATE



# MINNESOTA DEPARTMENT OF TRANSPORTATION CITY OF MAPLE GROVE MINNESOTA

CONSTRUCTION PLANS FOR: GRADING, AGGREGATE BASE, PLANT MIXED BITUMINOUS PAVEMENT, STORM SEWER, SANITARY SEWER, WATER MAIN, CONCRETE CURB AND GUTTER, TRAFFIC CONTROL AND RELATED APPURTENANCES

S.A.P. 189-130-002 LOCATED ON 101ST AVE N FROM TROY LN N TO LAWNDAL LN N  
S.A.P. 189-149-001 LOCATED ON TROY LN N NORTH FROM 101ST AVE N TO 105TH AVE N  
PEONY LN N FROM 101ST AVE N TO NORTH, 102ND AVE N FROM PEONY LN N TO SHADYVIEW LN N  
QUEENSLAND LN N FROM 102ND AVE N TO NORTH

S.A.P. 189-130-002 101ST AVE N

GROSS LENGTH	2663	FEET	0.504	MILES
BRIDGE LENGTH	0	FEET	0	MILES
EXCEPTION LENGTH	0	FEET	0	MILES
NET LENGTH	2663	FEET	0.504	MILES

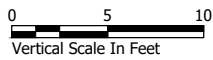
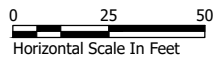
LENGTH AND DESCRIPTION BASED UPON NEW ARBOR RIDGE PKWY ROAD CENTERLINE

S.A.P. 189-149-001 TROY LN N

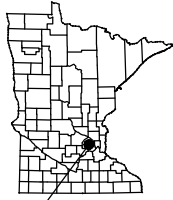
GROSS LENGTH	1113	FEET	0.211	MILES
BRIDGE LENGTH	0	FEET	0	MILES
EXCEPTION LENGTH	0	FEET	0	MILES
NET LENGTH	1113	FEET	0.211	MILES

LENGTH AND DESCRIPTION BASED UPON NEW ARBOR RIDGE PKWY ROAD CENTERLINE

TYPICAL PLAN SCALE  
UNLESS OTHERWISE NOTED:



### PROJECT LOCATION



CITY: MAPLE GROVE  
COUNTY: HENNEPIN  
DISTRICT: METRO

### DESIGN DESIGNATION

101ST AVE N:	COLLECTOR	
DESIGN SPEED	35 MPH	
DESIGN LOAD	10 TONS	
20 YEAR ESALS	N/A	
DESIGN LANE		
NUMBER OF TRAFFIC LANES	2	
NUMBER OF PARKING LANES	N/A	
SHOULDER WIDTH	N/A	
ADT:		
PRESENT - 2022	N/A	
FUTURE - 2042	6500	
SOIL R VALUE	N/A	

DESIGN SPEED FOR ROADWAY  
BASED ON STOPPING SIGHT DISTANCE:  
HEIGHT OF EYE = 3.5 FT  
HEIGHT OF OBJECT = 2.0 FT

DESIGN SPEED FOR BIKEWAY  
BASED ON STOPPING SIGHT DISTANCE:  
HEIGHT OF EYE = 4.5 FT  
HEIGHT OF OBJECT = 0 FT

### DESIGN DESIGNATION

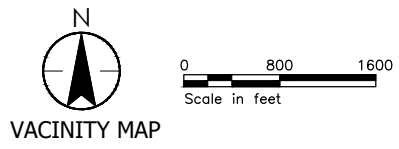
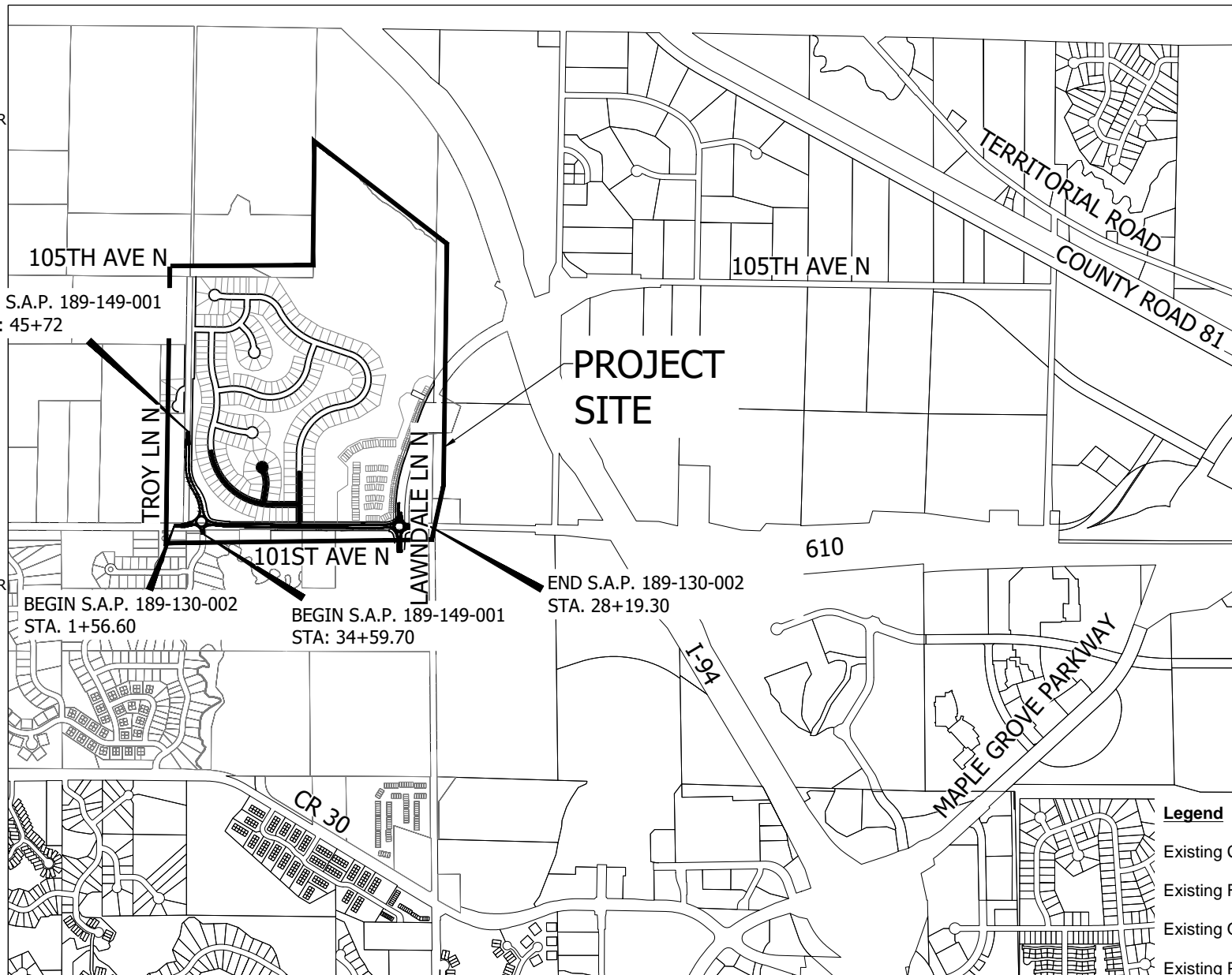
TROY LN N:	COLLECTOR	
DESIGN SPEED	35 MPH	
DESIGN LOAD	10 TONS	
20 YEAR ESALS	N/A	
DESIGN LANE		
NUMBER OF TRAFFIC LANES	2	
NUMBER OF PARKING LANES	N/A	
SHOULDER WIDTH	N/A	
ADT:		
PRESENT - 2022	N/A	
FUTURE - 2041	4500	
SOIL R VALUE	N/A	

DESIGN SPEED FOR ROADWAY  
BASED ON STOPPING SIGHT DISTANCE:  
HEIGHT OF EYE = 3.5 FT  
HEIGHT OF OBJECT = 2.0 FT

DESIGN SPEED FOR BIKEWAY  
BASED ON STOPPING SIGHT DISTANCE:  
HEIGHT OF EYE = 4.5 FT  
HEIGHT OF OBJECT = 0 FT

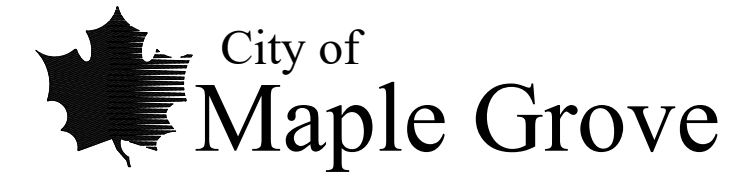
DESIGN SPEED NOT ACHIEVED AT ROUNDABOUT

THE SUBSURFACE UTILITY INFORMATION IN THIS PLAN IS UTILITY QUALITY LEVEL D. THIS QUALITY LEVEL WAS DETERMINED ACCORDING TO THE GUIDELINES OF CI/ASCE 38-02, ENTITLED "STANDARD GUIDELINES FOR THE COLLECTION AND DEPICTION OF EXISTING SUBSURFACE UTILITY DATA."



NOTE:  
ALL LOCATIONS OF PUBLIC  
UNDER THIS CONTRACT VET

--- GOVERNING SPECIFICATIONS ---  
THE 2020 EDITION OF THE MINNESOTA DEPARTMENT OF TRANSPORTATION "STANDARD SPECIFICATION FOR CONSTRUCTION" SHALL GOVERN.  
  
ALL TRAFFIC CONTROL DEVICES AND SIGNING SHALL CONFORM AND BE INSTALLED IN ACCORDANCE WITH THE "MINNESOTA MANUAL ON UNIFORM TRAFFIC CONTROL DEVICES" (MN MUTCD) AND PART VI, "FIELD MANUAL" FOR TEMPORARY TRAFFIC CONTROL DEVICES.



## CITY OF MAPLE GROVE EVANSWOOD STREET AND UTILITY IMPROVEMENTS - PHASE 1

CITY PROJECT NUMBER 21-10  
2022

SHEET NUMBER	SHEET TITLE
<b>GENERAL</b>	
G0.01	TITLE SHEET
G0.02	LEGEND
G0.03-G0.06	SEQ
G0.07-G0.11	GENERAL NOTES AND SCHEDULES
G0.12-G0.15	GENERAL PROJECT PLANS
<b>CIVIL</b>	
C0.01-C0.07	EXISTING CONDITIONS AND REMOVALS
C1.01-C1.04	TYPICAL SECTIONS AND STRUCTURE DETAILS
C2.01-C2.09	EROSION CONTROL PLAN AND SWPPP
C4.01-C4.27	SANITARY SEWER AND WATERMAIN PLAN AND PROFILE
C5.00-C5.19	STORM SEWER PLAN AND PROFILE
C6.01-C6.12	STREET PLAN AND PROFILE
C6.13-C6.20	ROUNDABOUT PLANS
C6.21-C6.22	INTERSECTION DETAILS
C7.00	EARTHWORK VOLUMES
C7.01-C7.14	CROSS SECTIONS
C8.01-C8.32	STANDARD DETAILS
T1.01-T1.05	SIGNAGE AND STRIPING PLAN
T9.01	TRAFFIC CONTROL PLAN
<b>ELECTRICAL</b>	
E1.01-E1.04	STREET LIGHTING PLAN
E6.01	ELECTRICAL DETAILS
<b>LANDSCAPING</b>	
L1.01-L1.04	PLANTING PLAN
L8.01	PLANTING DETAILS
I1.01-I1.02	IRRIGATION PLAN
I8.01-I8.03	IRRIGATION LEGEND, NOTES, AND DETAILS
THIS PLAN SET CONTAINS 172 SHEETS	

I HEREBY CERTIFY THAT THIS PLAN WAS PREPARED BY ME OR UNDER MY DIRECT SUPERVISION AND THAT I

### Legend

	EXISTING	REMOVE/ABANDON	PROPOSED
Existing Copper Cable	— T — (Green)	— T — (Red)	— T — (Blue)
Existing Fiber Cable	— F/O — (Green)	— F/O — (Red)	— F/O — (Blue)
Existing Overhead Wire	— OHT — (Green)	— OHT — (Red)	— OHT — (Blue)
Existing Pedestal	■ (Green)	■ (Red)	■ (Blue)
Existing Manhole	● (Green)	● (Red)	● (Blue)
Existing Handhole	■ (Green)	■ (Red)	■ (Blue)
Existing Pole	● (Green)	● (Red)	● (Blue)
Cross Box	■ (Green)	■ (Red)	■ (Blue)

**Stantec**  
733 Marquette Avenue, Suite 1000  
Minneapolis, MN 55402  
www.stantec.com

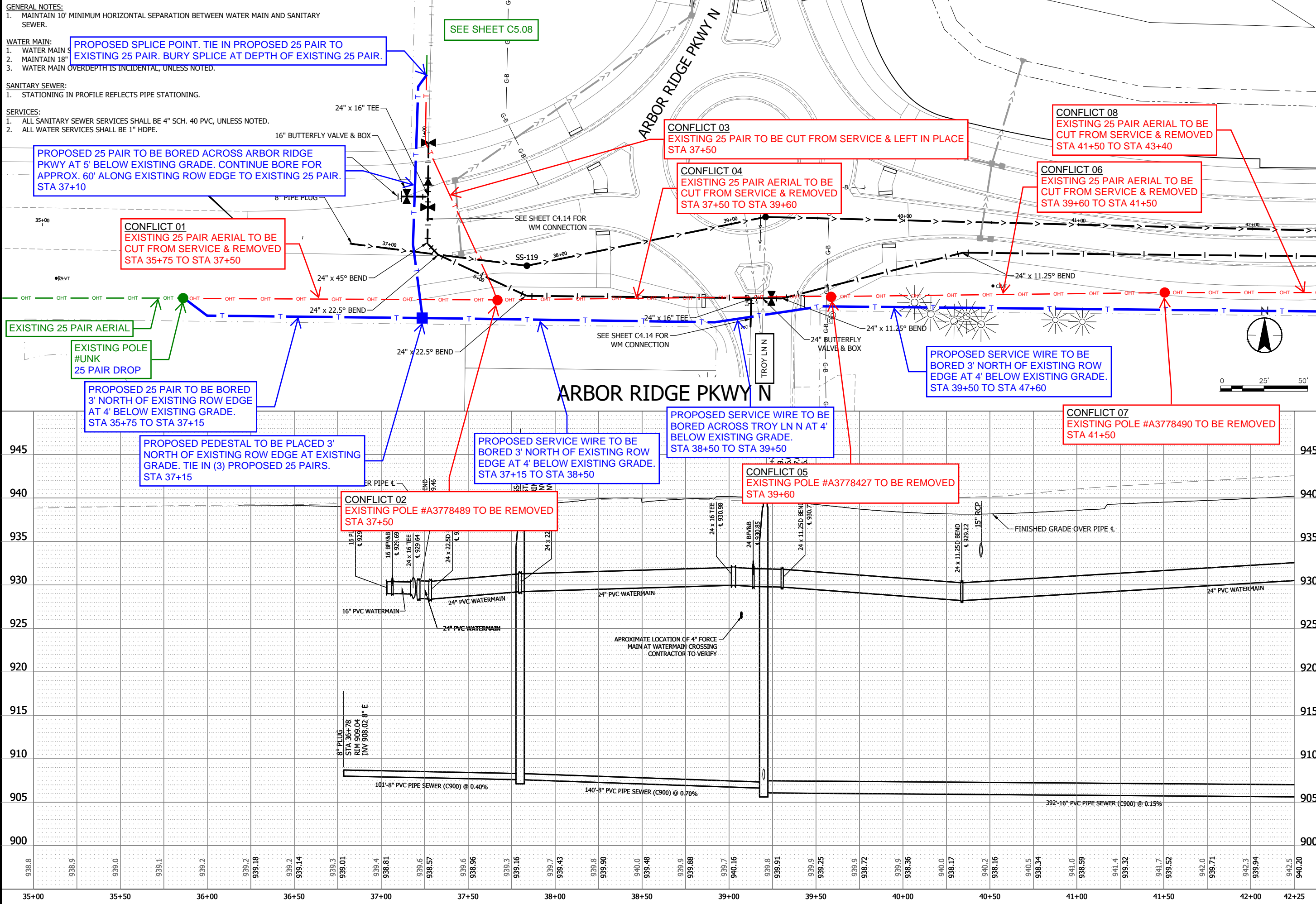
CITY OF MAPLE GROVE, MINNESOTA  
EVANSWOOD STREET AND UTILITY IMPROVEMENTS PHASE 1 - CP 21-10  
TITLE SHEET

NO.	REVISION	DATE
SURVEY	TNA	
DRAWN	ASB/JLT	
DESIGNED	ASB/JLT	
CHECKED	TJM	
APPROVED	TJM	
PROJ. NO.	193805231	
SHEET NUMBER	G0.01	

Plot Date: 03/04/2022 - 3:16pm  
Drawing Name: C:\yew\_atm\_bh\_info01\93805231-G001.dwg  
User: MG\_Parcels\_03122021\_193805231\_ASB

THE CONTRACTOR SHALL VERIFY AND BE RESPONSIBLE FOR ALL DIMENSIONS. DO NOT SCALE THE DRAWING. ANY ERRORS OR OMISSIONS SHALL BE REPORTED TO STANTEC WITHOUT DELAY. NO USE FOR ANY PURPOSE OTHER THAN THAT AUTHORIZED BY STANTEC IS FORBIDDEN.

THE CONTRACTOR SHALL VERIFY AND BE RESPONSIBLE FOR ALL DIMENSIONS. DO NOT SCALE THE DRAWING. ANY ERRORS OR OMISSIONS SHALL BE REPORTED TO STANTEC WITHOUT DELAY. REPRODUCTION OR USE FOR ANY PURPOSE OTHER THAN THAT AUTHORIZED BY STANTEC IS FORBIDDEN.



**Stantec**  
733 Marquette Avenue, Suite 1000  
Minneapolis, MN 55402  
www.stantec.com

SIGNATURE: \_\_\_\_\_ DATE: April 11, 2022 IIC NO. 582793

PRINTER: ANDREW S. BOYIE

HEREBY CERTIFY THAT THIS PLAN, SPECIFICATION, OR REPORT WAS PREPARED BY ME OR UNDER MY DIRECT SUPERVISION AND THAT I AM A DULY LICENSED PROFESSIONAL ENGINEER UNDER THE LAWS OF THE STATE OF MINNESOTA.

**CITY OF MAPLE GROVE, MINNESOTA**  
**EVANSWOOD STREET AND UTILITY IMPROVEMENTS PHASE 1 - CP 21-10**  
SANITARY SEWER AND WATERMAIN

NO	REVISION	DATE

SURVEY: TNA  
DRAWN: ASB/JLT  
DESIGNED: ASB/JLT  
CHECKED: TJM  
APPROVED: TJM  
PROJ. NO.: 193805231  
SHEET NUMBER: **C4.01**

THE CONTRACTOR SHALL VERIFY AND BE RESPONSIBLE FOR ALL DIMENSIONS. DO NOT SCALE THE DRAWING. ANY ERRORS OR OMISSIONS SHALL BE REPORTED TO STANTEC WITHOUT DELAY. REPRODUCTION OR USE FOR ANY PURPOSE OTHER THAN THAT AUTHORIZED BY STANTEC IS FORBIDDEN.

**GENERAL NOTES:**

1. MAINTAIN 10' MINIMUM HORIZONTAL SEPARATION BETWEEN WATER MAIN AND SANITARY SEWER.

**WATER MAIN:**

1. WATER MAIN SHALL HAVE 7.5 FOOT MINIMUM COVER, UNLESS NOTED.
2. MAINTAIN 18" VERTICAL SEPARATION FROM WATER MAIN AT STORM SEWER CROSSINGS.
3. WATER MAIN OVERDEPTH IS INCIDENTAL, UNLESS NOTED.

**SANITARY SEWER:**

1. STATIONING IN PROFILE REFLECTS PIPE STATIONING.

**SERVICES:**

1. ALL SANITARY SEWER SERVICES SHALL BE 4" SCH. 40 PVC, UNLESS NOTED.
2. ALL WATER SERVICES SHALL BE 1" HDPE.

**CONFLICT 08 (CONTD.)**

EXISTING 25 PAIR AERIAL TO BE CUT FROM SERVICE & REMOVED STA 41+50 TO STA 43+40

**CONFLICT 10**

EXISTING 25 PAIR AERIAL TO BE CUT FROM SERVICE & REMOVED STA 43+40 TO STA 45+40

**CONFLICT 12**

EXISTING 25 PAIR AERIAL TO BE CUT FROM SERVICE & REMOVED STA 45+40 TO STA 47+60

**CONFLICT 13**

EXISTING POLE #A3778495 TO BE REMOVED STA 47+60

**CONFLICT 16**

EXISTING 25 PAIR AERIAL TO BE CUT FROM SERVICE & REMOVED STA 48+80 TO STA 50+60

**CONFLICT 09**

EXISTING POLE #A3778491 TO BE REMOVED STA 43+40

**CONFLICT 11**

EXISTING POLE #A3778492 TO BE REMOVED STA 45+40

**CONFLICT 14**

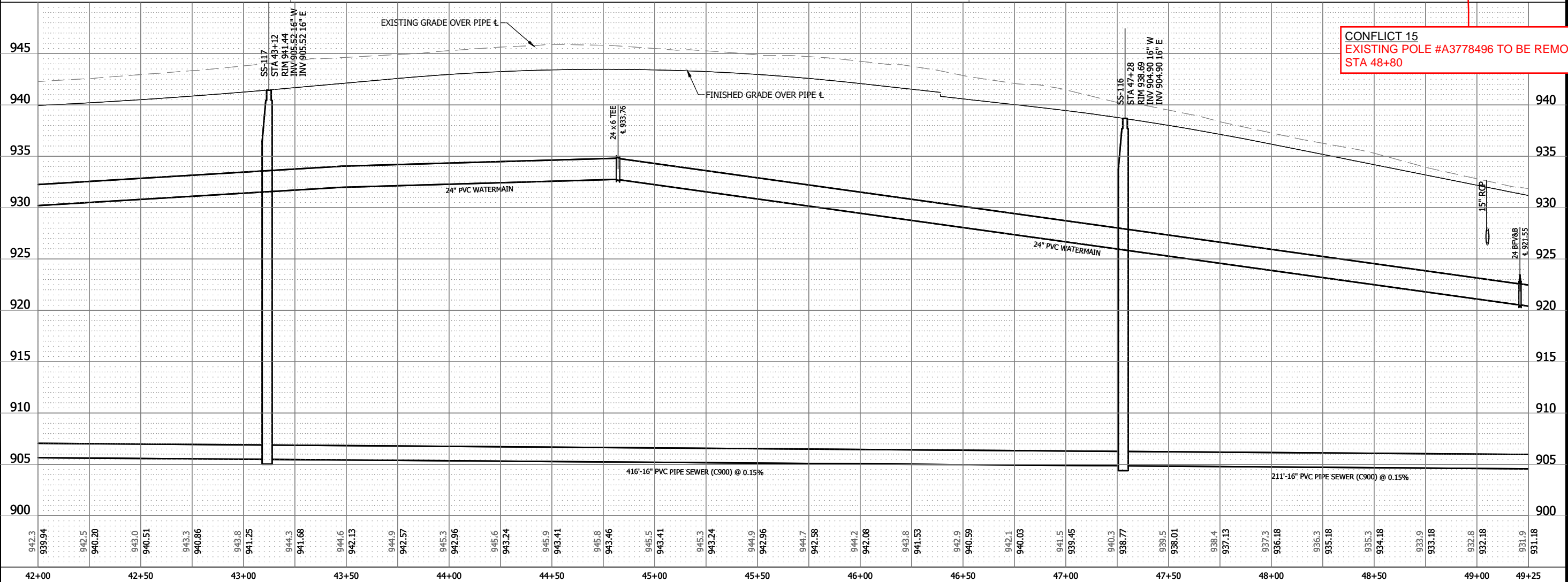
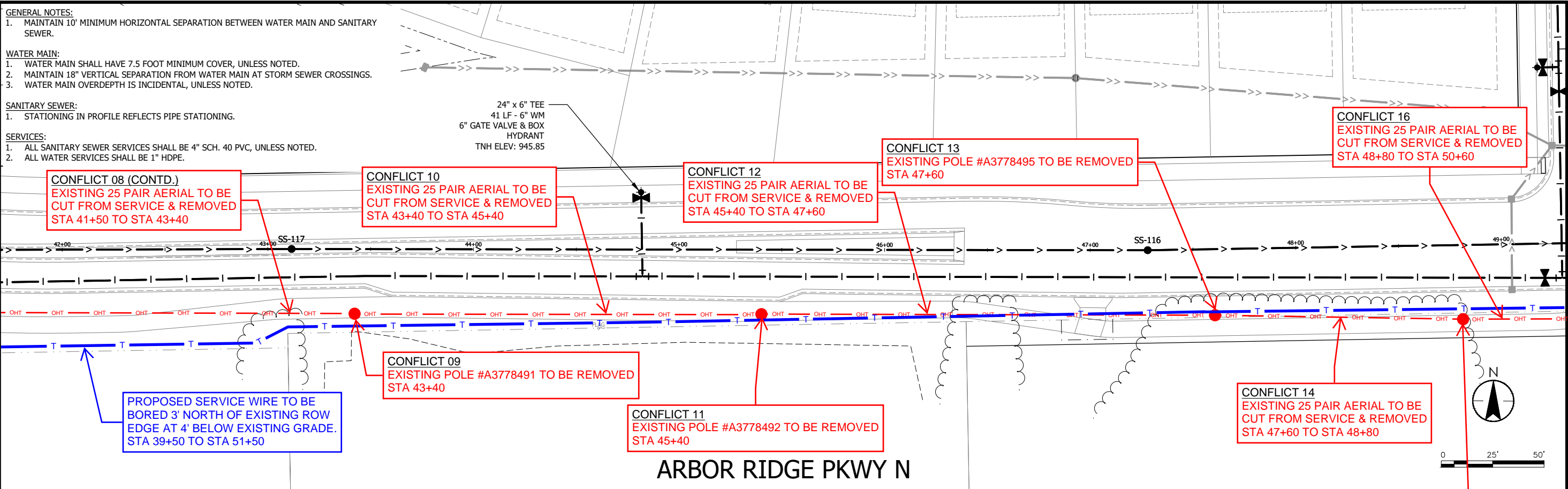
EXISTING 25 PAIR AERIAL TO BE CUT FROM SERVICE & REMOVED STA 47+60 TO STA 48+80

**CONFLICT 15**

EXISTING POLE #A3778496 TO BE REMOVED STA 48+80

PROPOSED SERVICE WIRE TO BE BORED 3' NORTH OF EXISTING ROW EDGE AT 4" BELOW EXISTING GRADE. STA 39+50 TO STA 51+50

24" x 6" TEE  
41 LF - 6" WM  
6" GATE VALVE & BOX  
HYDRANT  
TNH ELEV: 945.85



**Stantec**  
733 Marquette Avenue, Suite 1000  
Minneapolis, MN 55402  
www.stantec.com

I hereby certify that this plan, specification, or report was prepared by me or under my direct supervision and that I am a duly licensed professional engineer under the laws of the State of Minnesota.  
PRINT NAME: ANDREW S. BOYCE  
SIGNATURE: \_\_\_\_\_  
DATE: April 11, 2022 I.C. NO. 582793

SOTA  
CITY OF MAPLE GROVE, MN  
EVANSWOOD STREET AND UTILITY IMPROVEMENTS PHASE 1 - CP 21-10  
SANITARY SEWER AND WATERMAIN

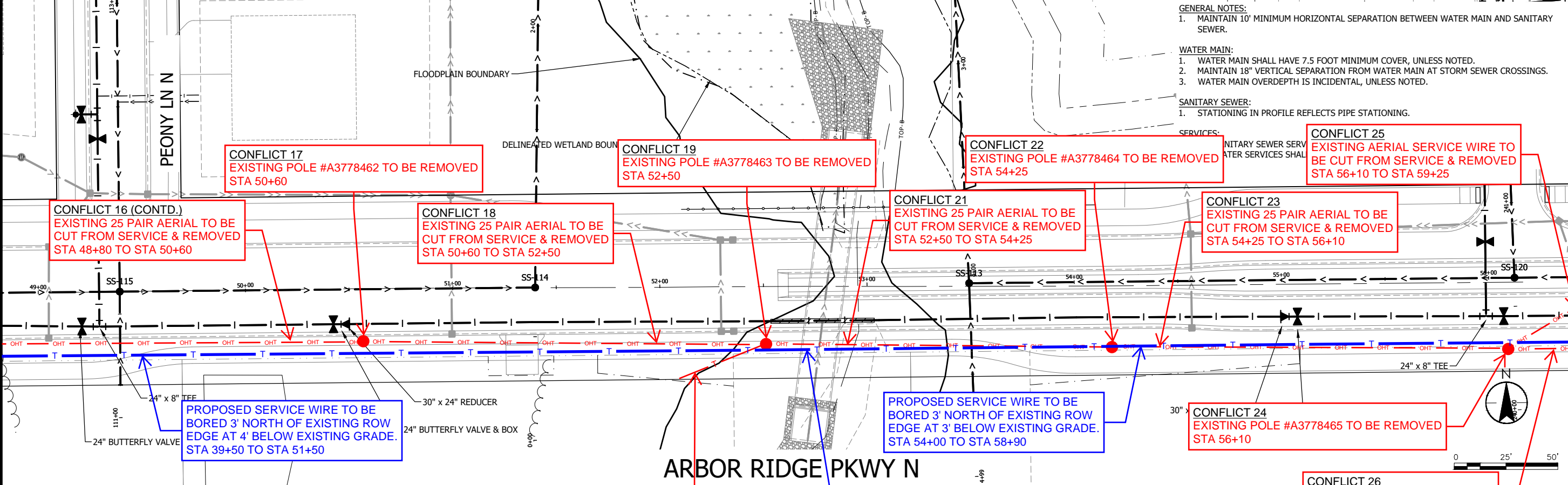
NO	REVISION	DATE

SURVEY: TNA  
DRAWN: ASB/JLT  
DESIGNED: ASB/JLT  
CHECKED: TJM  
APPROVED: TJM  
PROJ. NO.: 193805231  
SHEET NUMBER: C4.02

Plot Date: 03/04/2022 - 9:37am  
Drawing name: C:\p\win\_bh\_info01\193805231\_C40.dwg  
User: 193805231\XJNO\_Development  
Sheet: 193805231\_XJNO\_Perworks  
BORDER: 193805231\_XSS  
SCALE: 193805231\_XFL  
PROJECT: 193805231



THE CONTRACTOR SHALL VERIFY AND BE RESPONSIBLE FOR ALL DIMENSIONS. DO NOT SCALE THE DRAWING. ANY ERRORS OR OMISSIONS SHALL BE REPORTED TO STANTEC WITHOUT DELAY. NO USE FOR ANY PURPOSE OTHER THAN THAT AUTHORIZED BY STANTEC IS FORBIDDEN.



**GENERAL NOTES:**

1. MAINTAIN 10' MINIMUM HORIZONTAL SEPARATION BETWEEN WATER MAIN AND SANITARY SEWER.

**WATER MAIN:**

1. WATER MAIN SHALL HAVE 7.5 FOOT MINIMUM COVER, UNLESS NOTED.
2. MAINTAIN 18\"
3. WATER MAIN OVERDEPTH IS INCIDENTAL, UNLESS NOTED.

**SANITARY SEWER:**

1. STATIONING IN PROFILE REFLECTS PIPE STATIONING.

**SERVICES:**

- SANITARY SEWER SERVICE
- WATER SERVICES SHALL

**CONFLICT 17**  
EXISTING POLE #A3778462 TO BE REMOVED  
STA 50+60

**CONFLICT 19**  
EXISTING POLE #A3778463 TO BE REMOVED  
STA 52+50

**CONFLICT 22**  
EXISTING POLE #A3778464 TO BE REMOVED  
STA 54+25

**CONFLICT 25**  
EXISTING AERIAL SERVICE WIRE TO BE CUT FROM SERVICE & REMOVED  
STA 56+10 TO STA 59+25

**CONFLICT 16 (CONTD.)**  
EXISTING 25 PAIR AERIAL TO BE CUT FROM SERVICE & REMOVED  
STA 48+80 TO STA 50+60

**CONFLICT 18**  
EXISTING 25 PAIR AERIAL TO BE CUT FROM SERVICE & REMOVED  
STA 50+60 TO STA 52+50

**CONFLICT 21**  
EXISTING 25 PAIR AERIAL TO BE CUT FROM SERVICE & REMOVED  
STA 52+50 TO STA 54+25

**CONFLICT 23**  
EXISTING 25 PAIR AERIAL TO BE CUT FROM SERVICE & REMOVED  
STA 54+25 TO STA 56+10

PROPOSED SERVICE WIRE TO BE BORED 3' NORTH OF EXISTING ROW EDGE AT 4' BELOW EXISTING GRADE.  
STA 39+50 TO STA 51+50

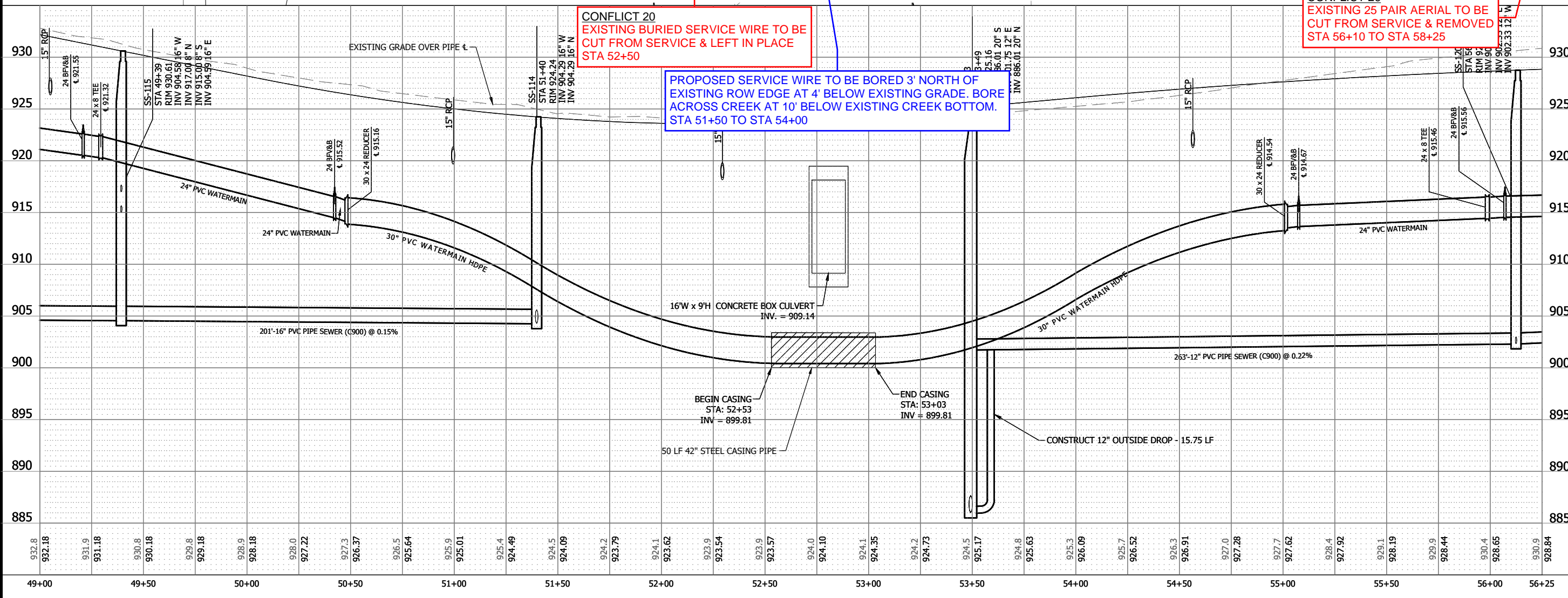
PROPOSED SERVICE WIRE TO BE BORED 3' NORTH OF EXISTING ROW EDGE AT 3' BELOW EXISTING GRADE.  
STA 54+00 TO STA 58+90

**CONFLICT 24**  
EXISTING POLE #A3778465 TO BE REMOVED  
STA 56+10

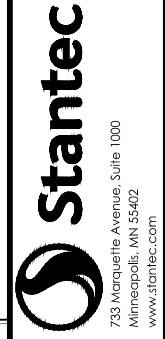
**CONFLICT 26**  
EXISTING 25 PAIR AERIAL TO BE CUT FROM SERVICE & REMOVED  
STA 56+10 TO STA 58+25

**CONFLICT 20**  
EXISTING BURIED SERVICE WIRE TO BE CUT FROM SERVICE & LEFT IN PLACE  
STA 52+50

PROPOSED SERVICE WIRE TO BE BORED 3' NORTH OF EXISTING ROW EDGE AT 4' BELOW EXISTING GRADE. BORE ACROSS CREEK AT 10' BELOW EXISTING CREEK BOTTOM.  
STA 51+50 TO STA 54+00



Plot Date: 03/04/2022 - 9:38am  
Drawing Name: C:\New\_in\_bh\_Info\01\193805231\_C40.dwg  
User: 193805231\_XSNO\_Development 193805231\_XSNO\_Perksby 193805231\_BONDOR 193805231\_XSS 193805231\_XSRL 193805231\_616418



733 Marquette Avenue, Suite 1000  
Minneapolis, MN 55402  
www.stantec.com

DATE: April 11, 2022  
UIC NO. 58203

CITY OF MAPLE GROVE, MINNESOTA  
EVANSWOOD STREET AND UTILITY IMPROVEMENTS PHASE 1 - CP 21-10

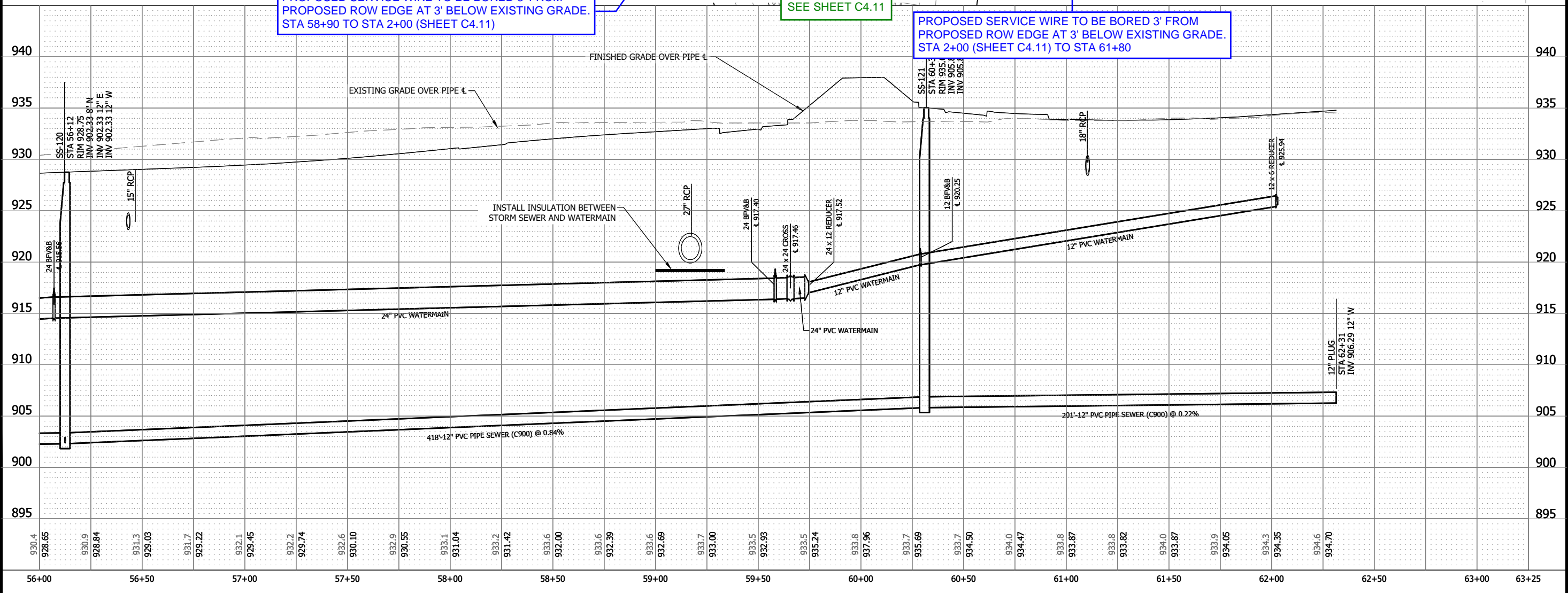
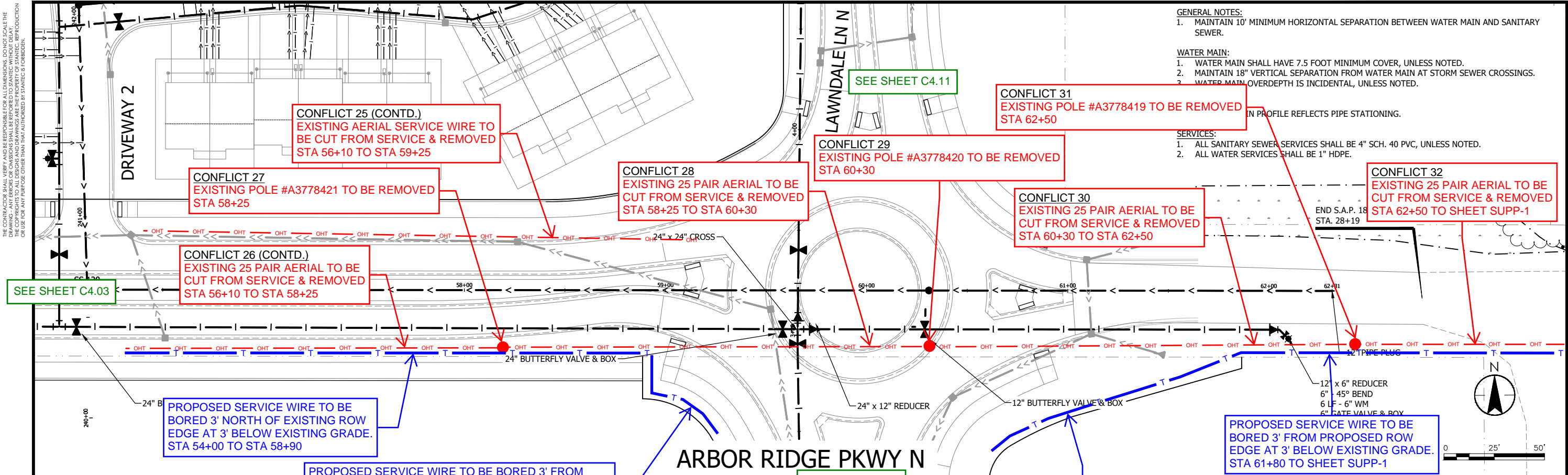
SANITARY SEWER AND WATERMAIN

NO	REVISION	DATE

SURVEY	TNA
DESIGNED	ASB/JLT
CHECKED	TJM
APPROVED	TJM
PROJ. NO.	193805231

SHEET NUMBER  
**C4.03**

THE CONTRACTOR SHALL VERIFY AND BE RESPONSIBLE FOR ALL DIMENSIONS. DO NOT SCALE THE DRAWING. ANY ERRORS OR OMISSIONS SHALL BE REPORTED TO STANTEC WITHOUT DELAY. REPRODUCTION OR USE FOR ANY PURPOSE OTHER THAN THAT AUTHORIZED BY STANTEC IS FORBIDDEN.



Plot Date: 03/04/2022 - 9:39am  
Drawing name: C:\new\_in\_bh\_infile01\m86795\193805231\_C40.dwg  
User: jtm  
Sheet: 193805231\_SANITARY SEWER AND WATERMAIN

**GENERAL NOTES:**  
1. MAINTAIN 10' MINIMUM HORIZONTAL SEPARATION BETWEEN WATER MAIN AND SANITARY SEWER.

**WATER MAIN:**  
1. WATER MAIN SHALL HAVE 7.5 FOOT MINIMUM COVER, UNLESS NOTED.  
2. MAINTAIN 18" VERTICAL SEPARATION FROM WATER MAIN AT STORM SEWER CROSSINGS.  
3. WATER MAIN OVERDEPTH IS INCIDENTAL, UNLESS NOTED.

**SERVICES:**  
1. ALL SANITARY SEWER SERVICES SHALL BE 4" SCH. 40 PVC, UNLESS NOTED.  
2. ALL WATER SERVICES SHALL BE 1" HDPE.



733 Marquette Avenue, Suite 1000  
Minneapolis, MN 55402  
www.stantec.com

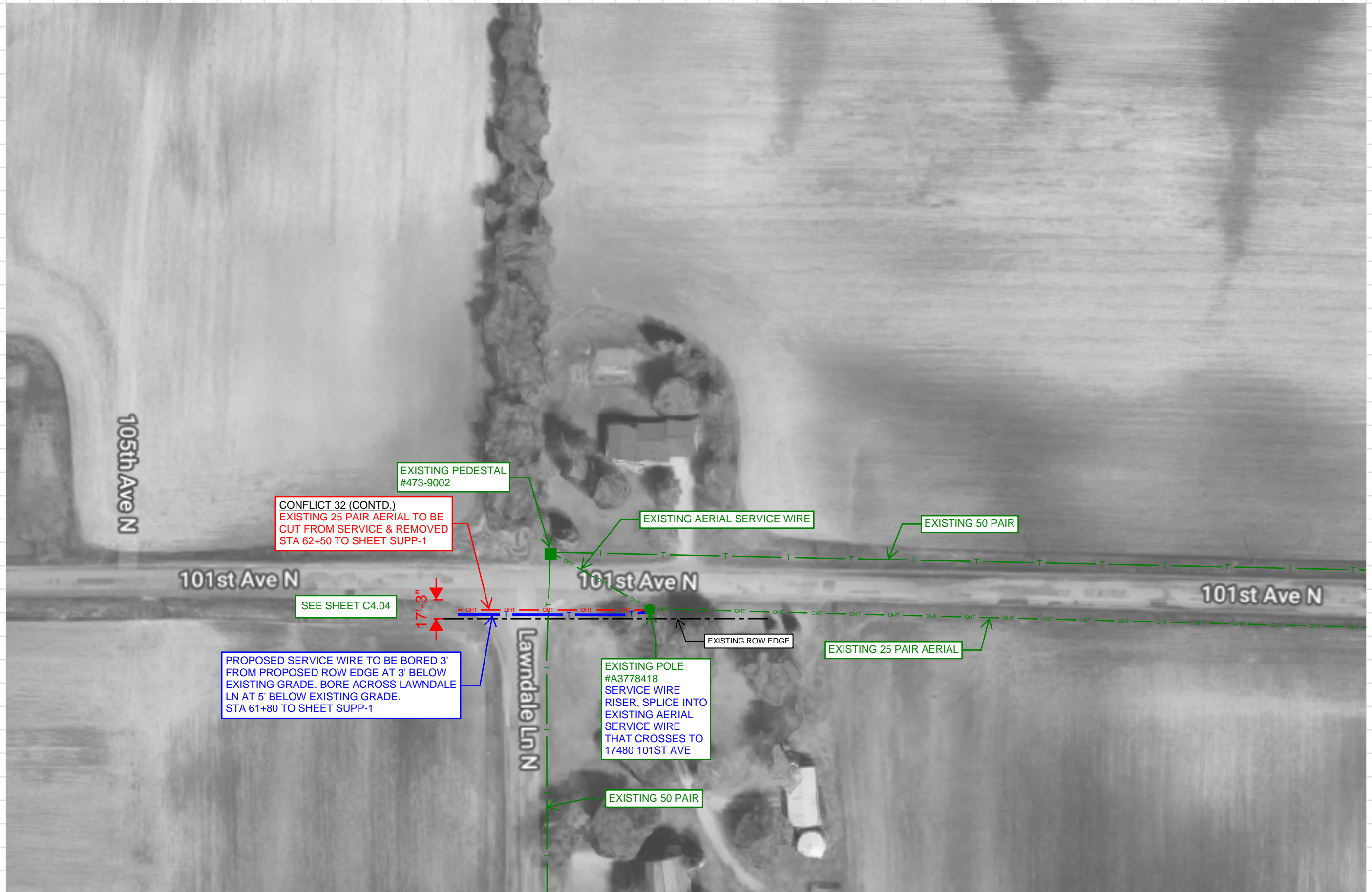
DATE: April 1, 2022 IJC. NO. 58273

CITY OF MAPLE GROVE, MINNESOTA  
EVANSWOOD STREET AND UTILITY IMPROVEMENTS PHASE 1 - CP 21-10  
SANITARY SEWER AND WATERMAIN

NO	REVISION	DATE

SURVEY: TNA  
DRAWN: ASB/JLT  
DESIGNED: ASB/JLT  
CHECKED: TJM  
APPROVED: TJM  
PROJ. NO.: 193805231

SHEET NUMBER  
**C4.04**

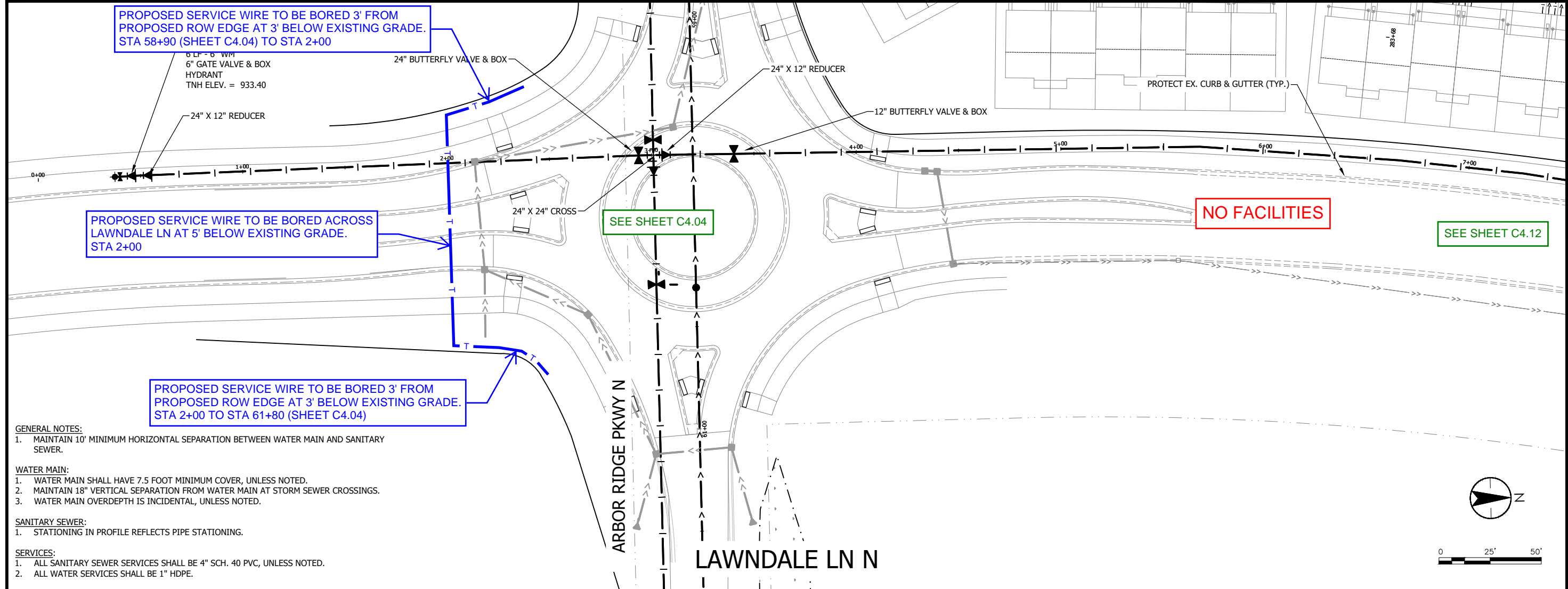


THE CONTRACTOR SHALL VERIFY AND BE RESPONSIBLE FOR ALL DIMENSIONS. DO NOT SCALE THE DRAWING. ANY ERRORS OR OMISSIONS SHALL BE REPORTED TO STANTEC WITHOUT DELAY. NO USE FOR ANY PURPOSE OTHER THAN THAT AUTHORIZED BY STANTEC IS FORBIDDEN.

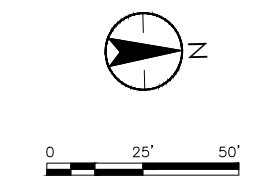
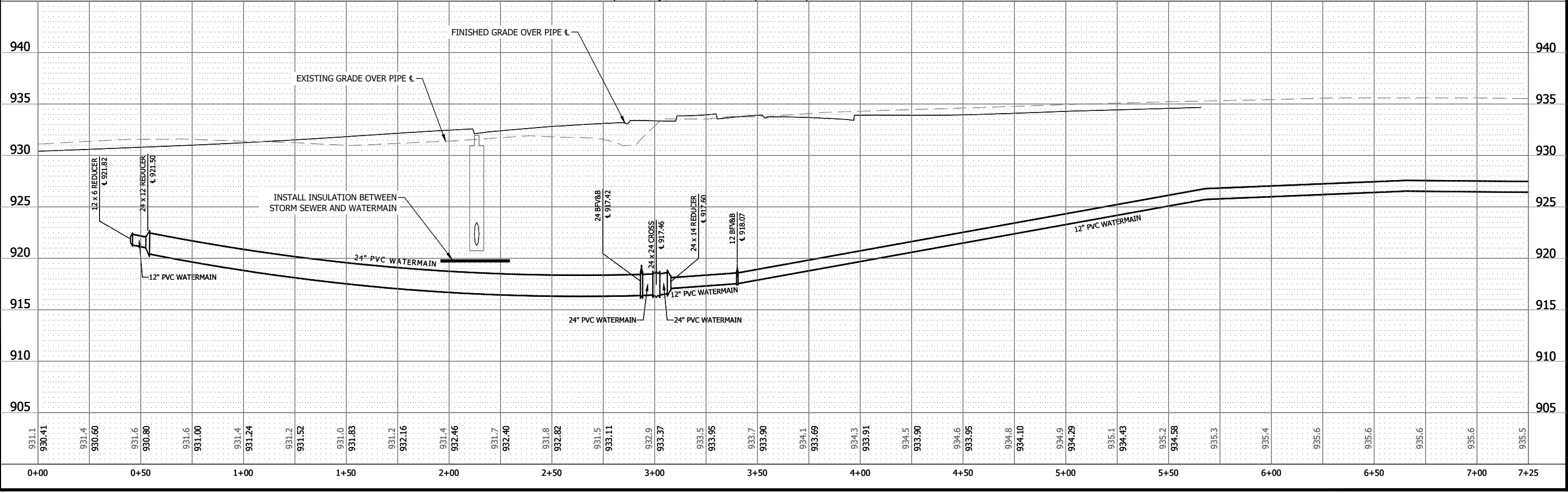
HEREBY CERTIFY THAT THIS PLAN, SPECIFICATION, OR REPORT WAS PREPARED BY ME OR UNDER MY DIRECT SUPERVISION AND THAT I AM A DULY LICENSED PROFESSIONAL ENGINEER UNDER THE LAWS OF THE STATE OF MINNESOTA.  
PRINT NAME: ANDREW S. BOYIE  
SIGNATURE: \_\_\_\_\_  
DATE: April 11, 2022 I.C. NO. 55703

NO	REVISION	DATE
SURVEY	TNA	
DRAWN	ASB/JLT	
DESIGNED	ASB/JLT	
CHECKED	TJM	
APPROVED	TJM	
PROJ. NO.	193805231	
SHEET NUMBER	C4.11	

Plot Date: 03/04/2022 - 9:45am  
Drawing name: C:\new\_dir\_bk\_infile01\Drawings\95\193805231\_C4.11.dwg  
User: 193805231\_XSNO\_Development 193805231\_XSNO\_Perkey 193805231\_AEFL 193805231\_AEFL 193805231\_AEFL 193805231\_XSNO 193805231\_XSNO 193805231\_XSNO



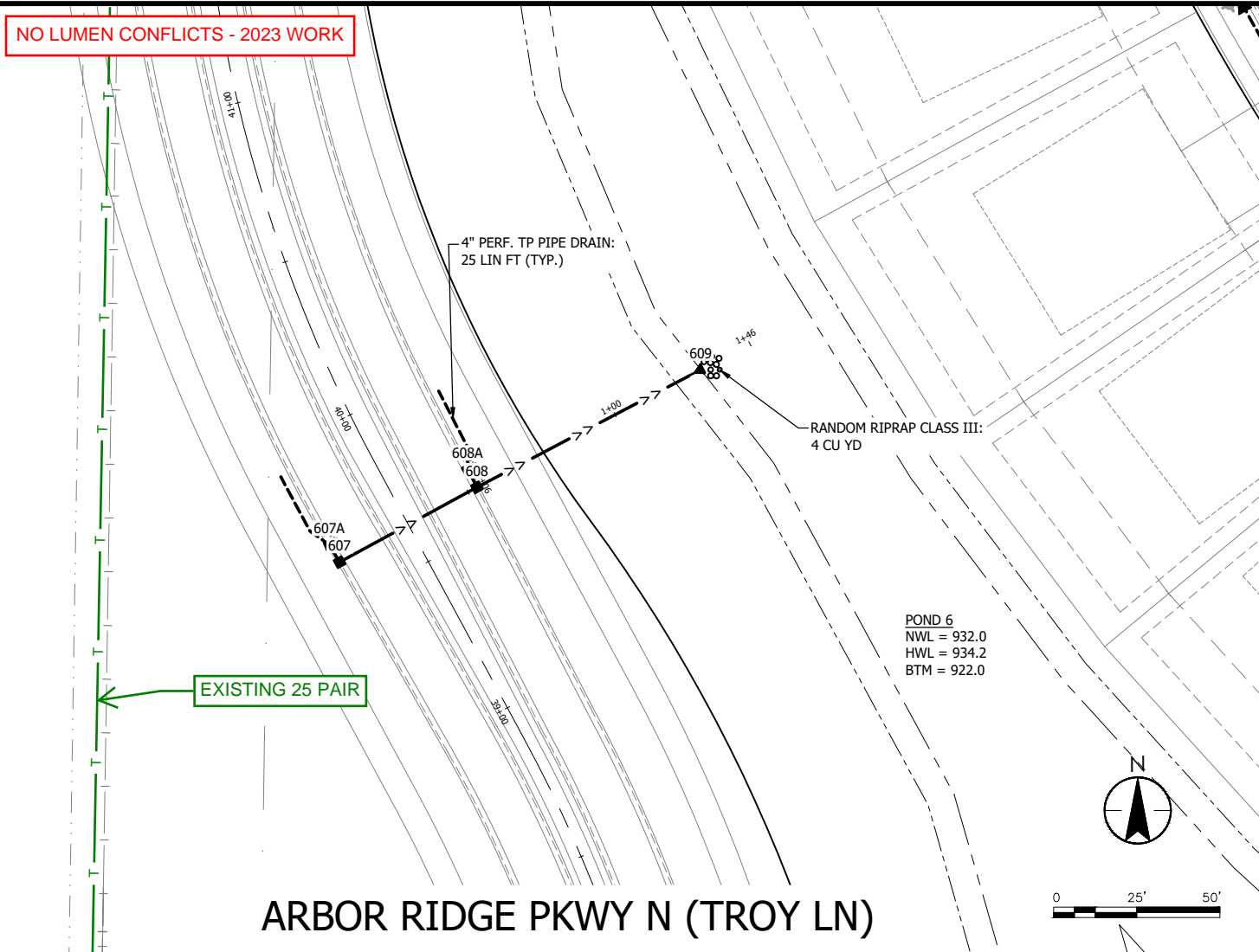
- GENERAL NOTES:**
1. MAINTAIN 10' MINIMUM HORIZONTAL SEPARATION BETWEEN WATER MAIN AND SANITARY SEWER.
- WATER MAIN:**
1. WATER MAIN SHALL HAVE 7.5 FOOT MINIMUM COVER, UNLESS NOTED.
  2. MAINTAIN 18" VERTICAL SEPARATION FROM WATER MAIN AT STORM SEWER CROSSINGS.
  3. WATER MAIN OVERDEPTH IS INCIDENTAL, UNLESS NOTED.
- SANITARY SEWER:**
1. STATIONING IN PROFILE REFLECTS PIPE STATIONING.
- SERVICES:**
1. ALL SANITARY SEWER SERVICES SHALL BE 4" SCH. 40 PVC, UNLESS NOTED.
  2. ALL WATER SERVICES SHALL BE 1" HDPE.



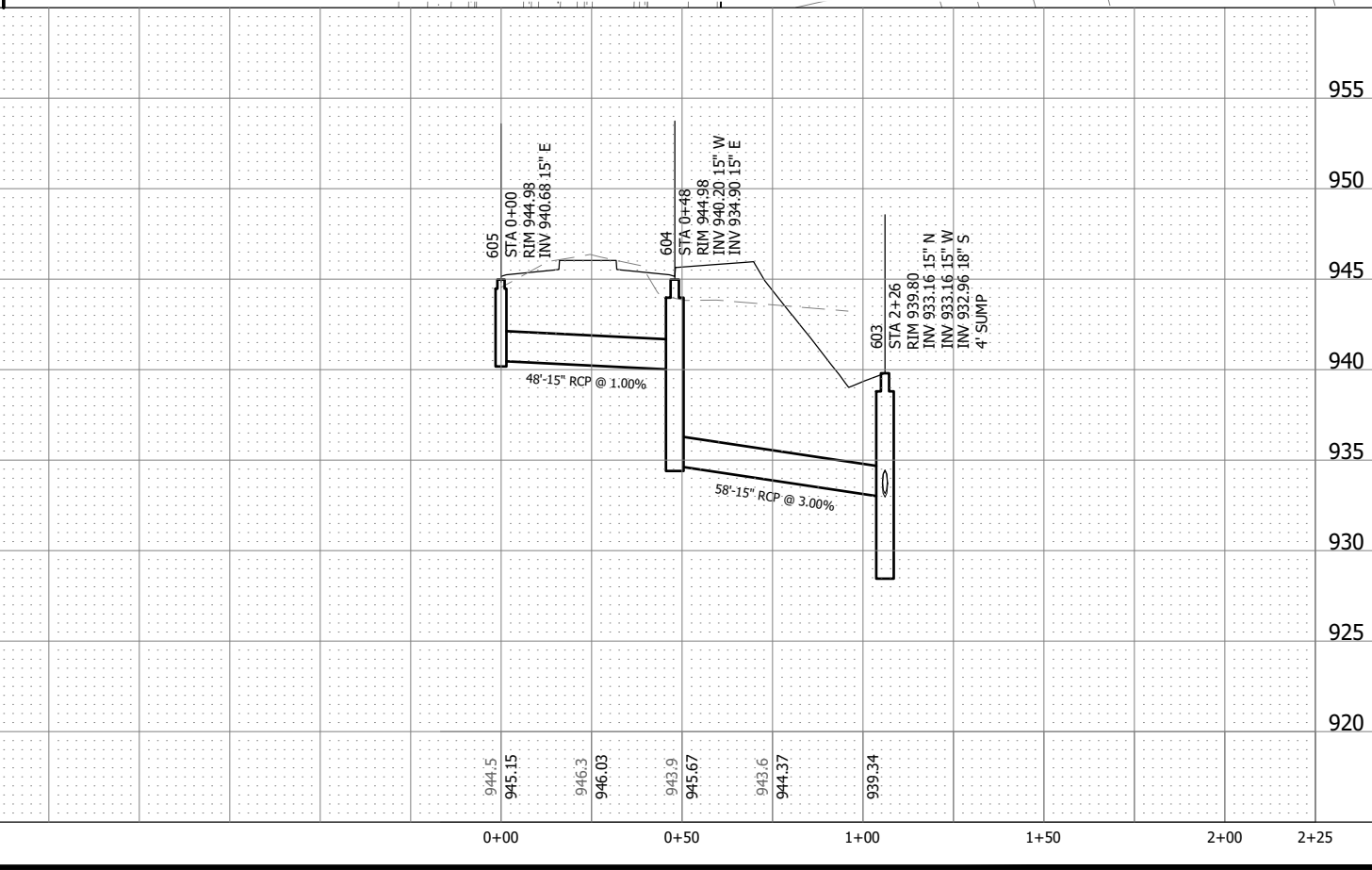
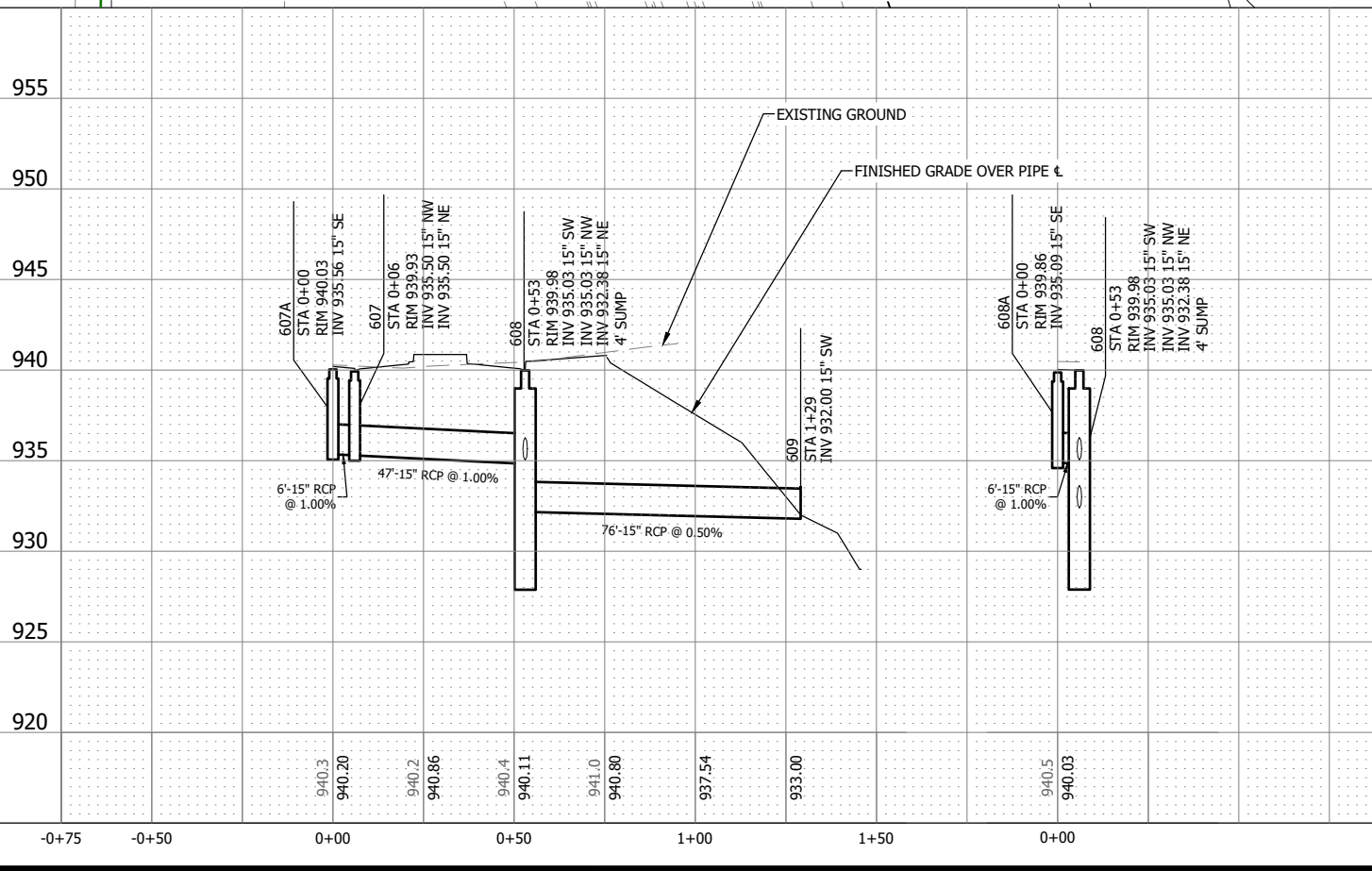
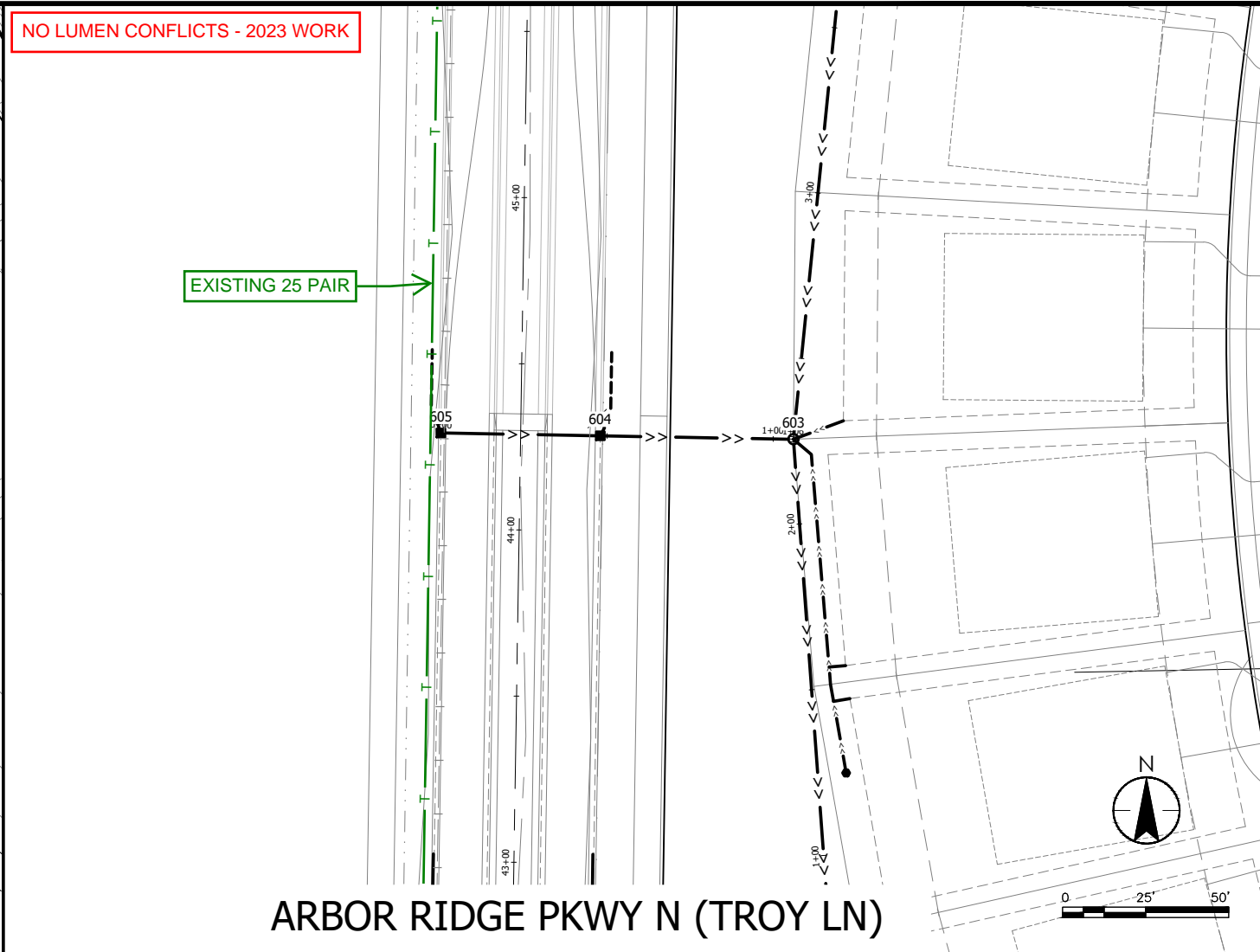
THE CONTRACTOR SHALL VERIFY AND BE RESPONSIBLE FOR ALL DIMENSIONS. DO NOT SCALE THE DRAWING. ANY ERRORS OR OMISSIONS SHALL BE REPORTED TO STANTEC WITHOUT DELAY. NO USE FOR ANY PURPOSE OTHER THAN THAT AUTHORIZED BY STANTEC IS FORBIDDEN.

Plot Date: 03/03/2022 - 6:20pm  
 Drawing name: C:\new\_inn\_bh\_info\01\193805231\_C5.00.dwg  
 User: 193805231\_XSST\_Parkways, 193805231\_EOWDOR, 193805231\_XSHO\_Development, 193805231\_XSPT, 193805231\_XSST\_Development, 193805231\_XSST\_Parkways, 193805231\_XSST\_Development, 193805231\_XSST

NO LUMEN CONFLICTS - 2023 WORK



NO LUMEN CONFLICTS - 2023 WORK



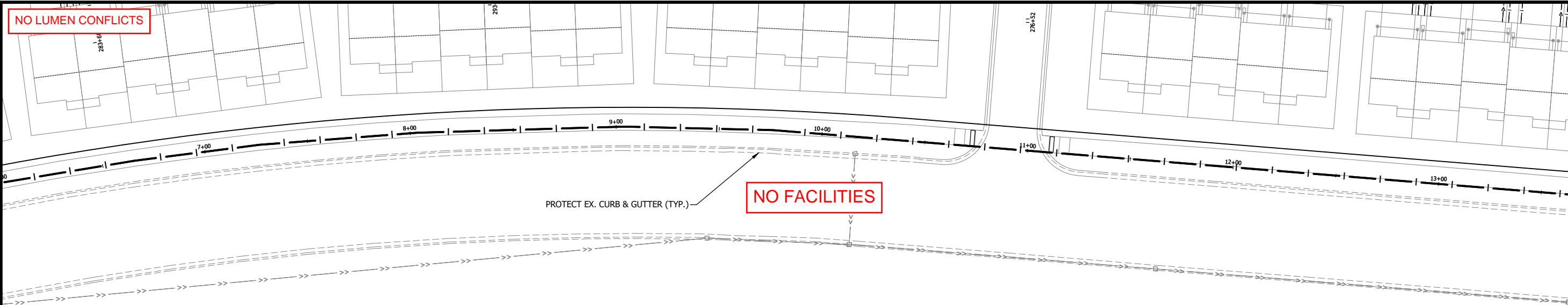


THE CONTRACTOR SHALL VERIFY AND BE RESPONSIBLE FOR ALL DIMENSIONS. DO NOT SCALE THE DRAWING. ANY ERRORS OR OMISSIONS SHALL BE REPORTED TO STANTEC WITHOUT DELAY. NO USE FOR ANY PURPOSE OTHER THAN THAT AUTHORIZED BY STANTEC IS FORBIDDEN.

**NO LUMEN CONFLICTS**

**NO FACILITIES**

PROTECT EX. CURB & GUTTER (TYP.)



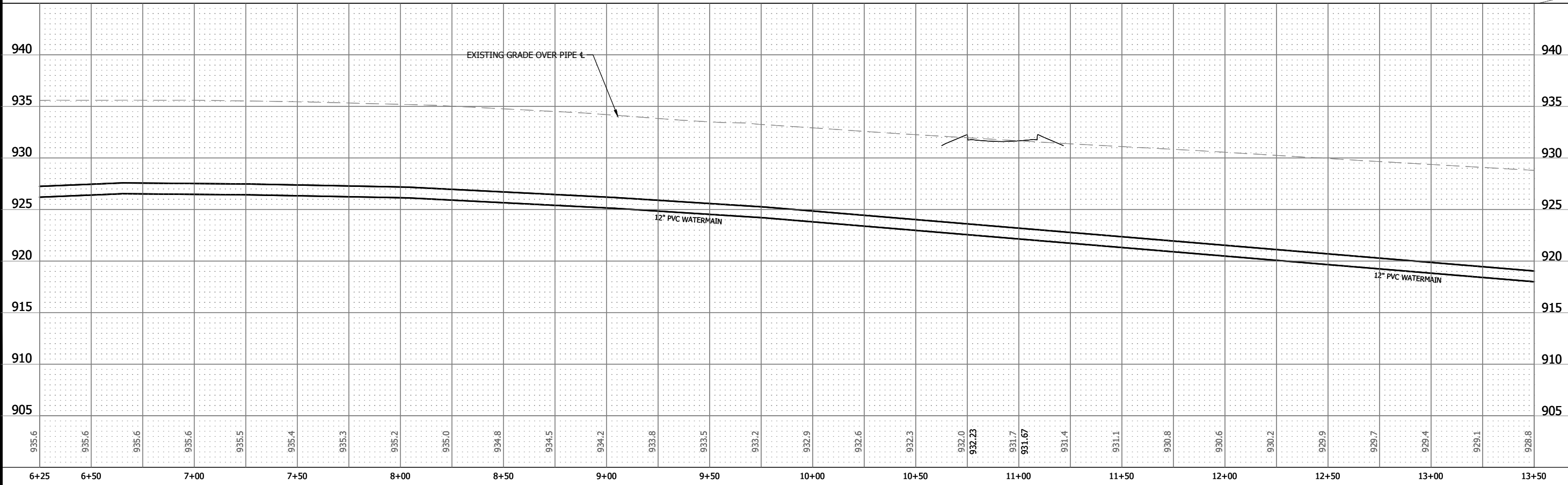
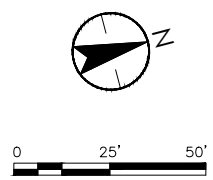
**GENERAL NOTES:**  
1. MAINTAIN 10' MINIMUM HORIZONTAL SEPARATION BETWEEN WATER MAIN AND SANITARY SEWER.

**WATER MAIN:**  
1. WATER MAIN SHALL HAVE 7.5 FOOT MINIMUM COVER, UNLESS NOTED.  
2. MAINTAIN 18" VERTICAL SEPARATION FROM WATER MAIN AT STORM SEWER CROSSINGS.  
3. WATER MAIN OVERDEPTH IS INCIDENTAL, UNLESS NOTED.

**SANITARY SEWER:**  
1. STATIONING IN PROFILE REFLECTS PIPE STATIONING.

**SERVICES:**  
1. ALL SANITARY SEWER SERVICES SHALL BE 4" SCH. 40 PVC, UNLESS NOTED.  
2. ALL WATER SERVICES SHALL BE 1" HDPE.

**LAWNDALE LN N**



**Stantec**  
733 Marquette Avenue, Suite 1000  
Minneapolis, MN 55402  
www.stantec.com

---

HEREBY CERTIFY THAT THIS PLAN, SPECIFICATION, OR REPORT WAS PREPARED BY ME OR UNDER MY DIRECT SUPERVISION AND THAT I AM A DULY LICENSED PROFESSIONAL ENGINEER UNDER THE LAWS OF THE STATE OF MINNESOTA.  
PRINT NAME: ANDREW S. BOYIE  
SIGNATURE: \_\_\_\_\_  
DATE: April 1, 2022 I.C. NO. 52793

CITY OF MAPLE GROVE, MINNESOTA  
EVANSWOOD STREET AND UTILITY IMPROVEMENTS PHASE 1 - CP 21-10  
SANITARY SEWER AND WATERMAIN

NO	REVISION	DATE

SURVEY	TNA
DRAWN	ASB/JLT
DESIGNED	ASB/JLT
CHECKED	TJM
APPROVED	TJM
PROJ. NO.	193805231

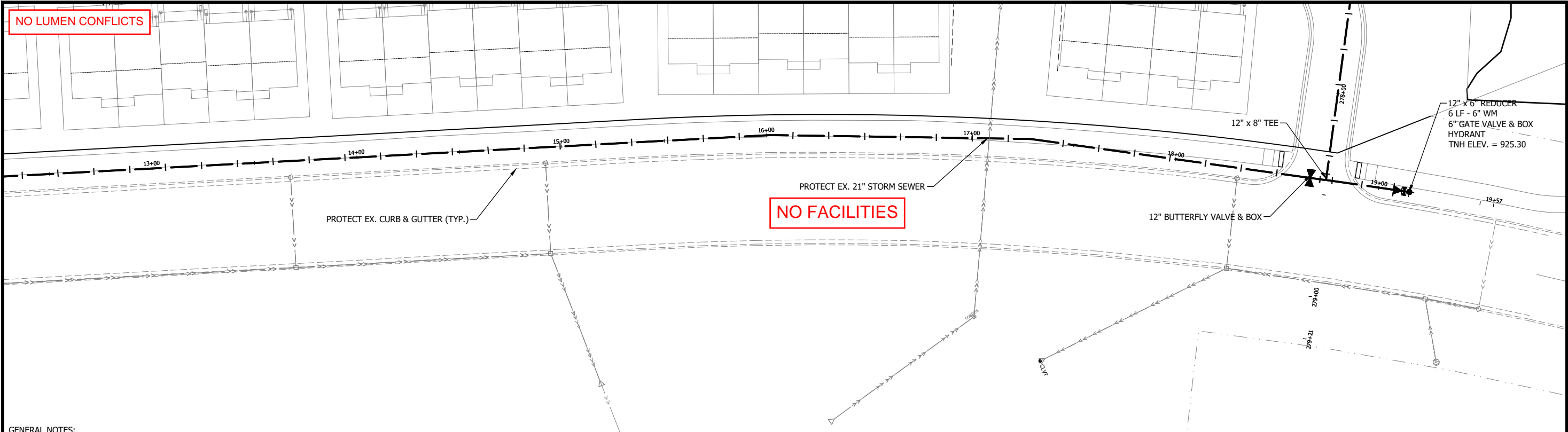
SHEET NUMBER  
**C4.12**

Plot Date: 03/04/2022 - 9:46am  
Drawing name: C:\proj\01\21\2100\Development\193805231\_XSNO\_Perks\193805231\_XSNO\_Perks.dwg  
Sheet: 193805231\_XSNO\_Development\193805231\_XSNO\_Perks\193805231\_XSNO\_Perks.dwg

THE CONTRACTOR SHALL VERIFY AND BE RESPONSIBLE FOR ALL DIMENSIONS. DO NOT SCALE THE DRAWING. ANY ERRORS OR OMISSIONS SHALL BE REPORTED TO STANTEC WITHOUT DELAY. REPRODUCTION OR USE FOR ANY PURPOSE OTHER THAN THAT AUTHORIZED BY STANTEC IS FORBIDDEN.

NO LUMEN CONFLICTS

NO FACILITIES



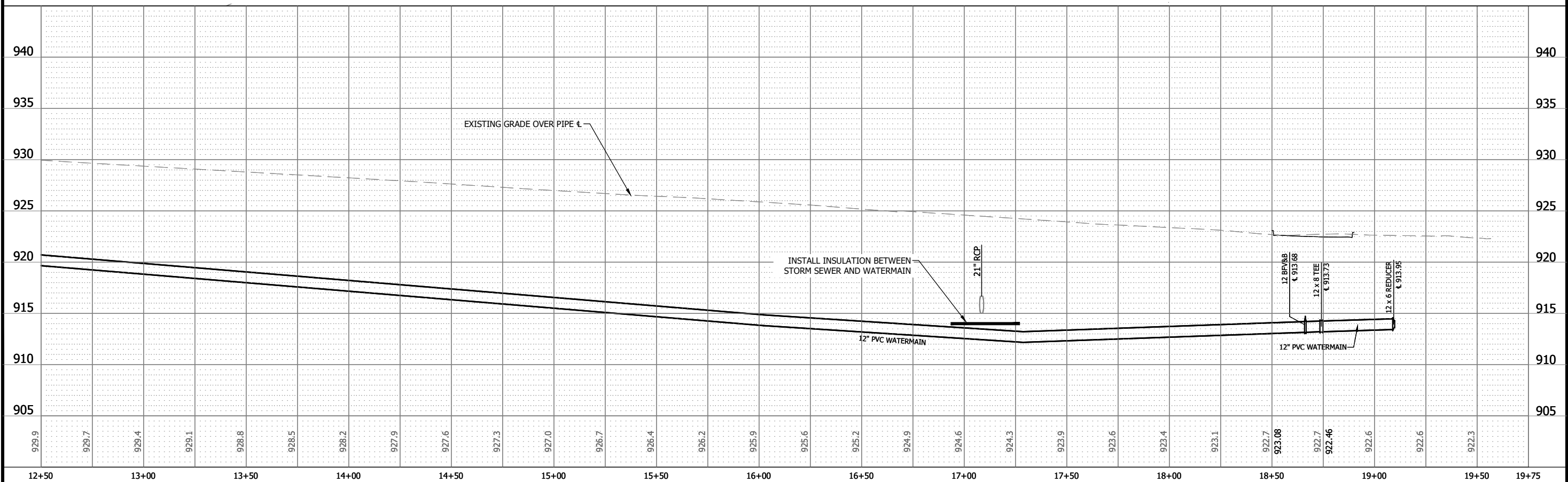
- GENERAL NOTES:
1. MAINTAIN 10' MINIMUM HORIZONTAL SEPARATION BETWEEN WATER MAIN AND SANITARY SEWER.

- WATER MAIN:
1. WATER MAIN SHALL HAVE 7.5 FOOT MINIMUM COVER, UNLESS NOTED.
  2. MAINTAIN 18" VERTICAL SEPARATION FROM WATER MAIN AT STORM SEWER CROSSINGS.
  3. WATER MAIN OVERDEPTH IS INCIDENTAL, UNLESS NOTED.

- SANITARY SEWER:
1. STATIONING IN PROFILE REFLECTS PIPE STATIONING.

- SERVICES:
1. ALL SANITARY SEWER SERVICES SHALL BE 4" SCH. 40 PVC, UNLESS NOTED.
  2. ALL WATER SERVICES SHALL BE 1" HDPE.

LAWNDALE LN N



DATE: April 1, 2022 IIC. NO. 52703

SIGNATURE: \_\_\_\_\_  
PRINT NAME: ANDREW S. BOYIE

HEREBY CERTIFY THAT THIS PLAN, SPECIFICATION, OR REPORT WAS PREPARED BY ME OR UNDER MY DIRECT SUPERVISION AND THAT I AM A DULY LICENSED PROFESSIONAL ENGINEER UNDER THE LAWS OF THE STATE OF MINNESOTA.

CITY OF MAPLE GROVE, MINNESOTA  
EVANSWOOD STREET AND UTILITY IMPROVEMENTS PHASE 1 - CP 21-10  
SANITARY SEWER AND WATERMAIN

NO.	REVISION	DATE

SURVEY	TNA
DRAWN	ASB/JLT
DESIGNED	ASB/JLT
CHECKED	TJM
APPROVED	TJM
PROJ. NO.	193805231

Plot Date: 03/04/2022 - 9:47am  
Drawing name: C:\\_Drawings\2022\2310 Development\193805231\_SANITARY SEWER AND WATERMAIN.dwg  
User: asb