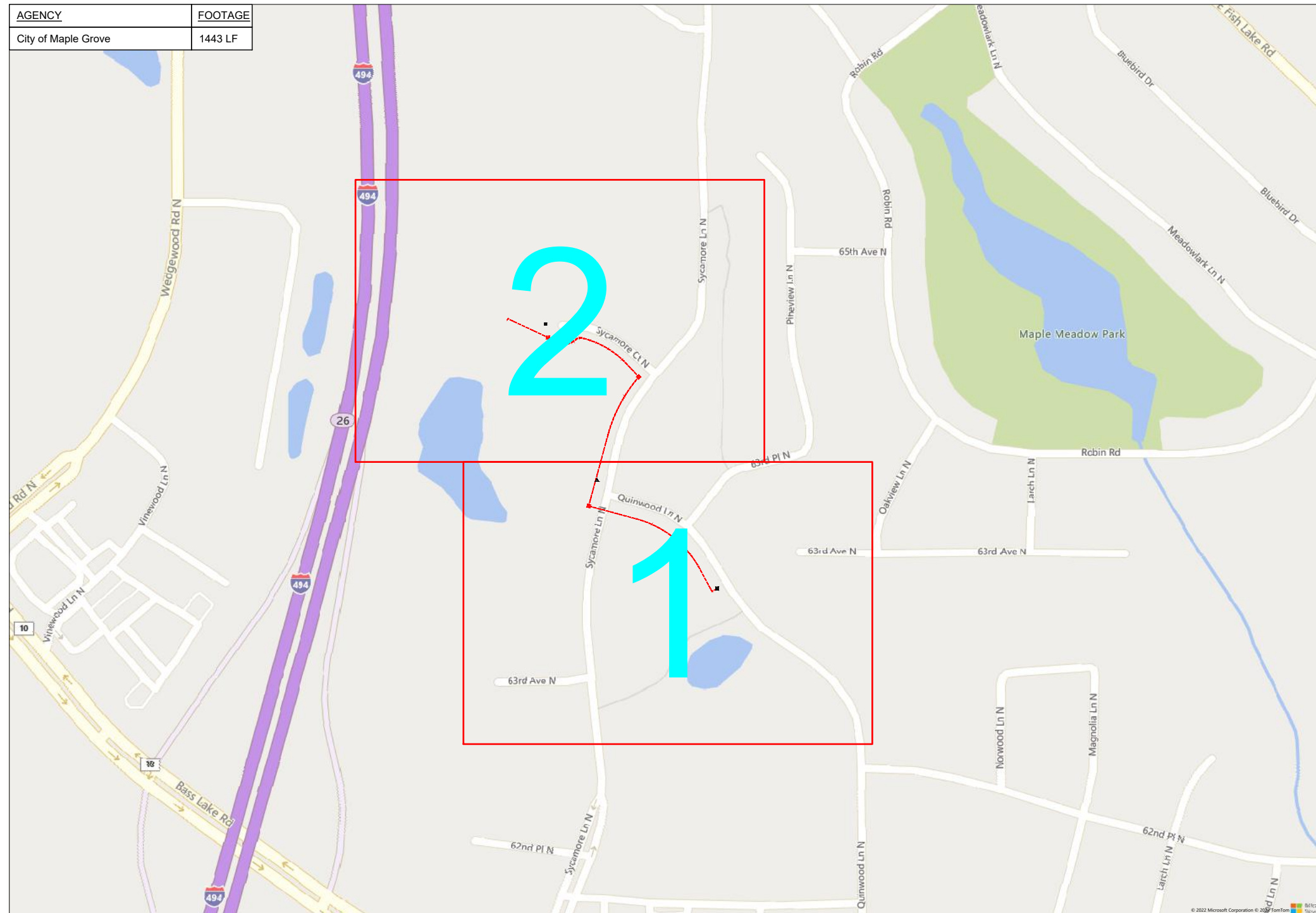


# 97391 702 Comm Maple Grove



6487 Sycamore Ct N Maple Grove, MN 55369



1" = -

Route	702 Comm Maple Grove
City	Maple Grove, MN
County	Hennepin
Filename	702 Comm Maple Grove
Work Order #	97391

**arvig**  
 160 2nd St SW  
 Perham, MN 56573  
 (218) 346-5500

TRACKING	
Staked By:	Brian Adams 03/15/22
Drafted By:	AMB 03/16/22
Project Manager	Jerrold Strode 218-347-3629
As-Built By:	-
Revision	-

Construction Totals	
Route Footage	1541'
Total Underground	1541'
Total Aerial	0'
Underground (New)	1541'
Aerial (New)	0'
Overpull (Ex Duct)	0'
Overlash (Ex Strand)	0'
Plow	0'
Bore	1541'
New Vaults	3
New Peds	0

**GSOC**  
 GOPHER STATE ONE CALL  
 1-800-252-1116  
 www.gopherstateonecall.org

Prepared by:  
 **compass**  
 consultants inc.  
 Perham, MN 218-346-3600  
 TrustCompass.com

OVERVIEW

# Legend

## Fiber Linetypes

	Proposed Underground Fiber - Bore
	Proposed Underground Fiber - Plow
	Proposed UG Fiber in Existing Duct
	Existing Underground Fiber
	Proposed Aerial Fiber
	Proposed Aerial Overlash
	Existing Aerial Fiber
	Proposed Aerial Strand
	Existing Aerial Strand

## Other Linetypes

	Rail Road
	Fence
	Retaining Wall
	Storm Sewer
	Sanitary Sewer
	Gas Line
	Tele./Comm. Line
	Water Line
	Electric Line
	Street light/Traffic signal
	District Cooling
	District Heating
	Force Main
	Other Utility or Unknown
	Utility Easement

## Abbreviations

- CL - Center Line
- R/W - Right of Way
- BOC - Back of Curb
- FC - Front of Curb
- EOR - Edge of Road
- S/W - Sidewalk
- HH - Handhole
- MH - Manhole
- PRT - Preterminated Cable
- PRG - Pigtail Cable

## Symbols

	Proposed Handhole
	Existing Handhole
	Reference Handhole
	Manhole
	Proposed Cabinet
	Existing Cabinet
	Bore Pit
	Proposed Splice Point
	Existing Splice Point
	Power Pole
	Proposed Slack Coil
	Existing Slack Coil
	Proposed Anchor/Down Guy
	Existing Anchor/Down Guy
	Proposed Riser
	Existing Riser
	Aerial Bond
	Aerial Ground
	BM53T - Fiber Marker
	BM53 - Fiber Marker
	Proposed PED
	Existing PED
	Proposed Splice Case
	Existing Splice Case
	Street Light
	Traffic Light
	Transformer
	Hydrant
	Catch Basin
	Tree

Materials	
48 Fiber	1966
1.25" Duct	2929
Vault (24x30)	3
Ground Rod	3



1" = -

Route	702 Comm Maple Grove
City	Maple Grove, MN
County	Hennepin
Filename	702 Comm Maple Grove
Work Order #	97391

arvig

160 2nd St SW  
Perham, MN 56573  
(218) 346-5500

TRACKING	
Staked By:	Brian Adams 03/15/22
Drafted By:	AMB 03/16/22
Project Manager	Jerrod Strode 218-347-3629
As-Built By:	-
Revision	-

Construction Totals	
Route Footage	1541'
Total Underground	1541'
Total Aerial	0'
Underground (New)	1541'
Aerial (New)	0'
Overpull (Ex Duct)	0'
Overlash (Ex Strand)	0'
Plow	0'
Bore	1541'
New Vaults	3
New Peds	0

**GSOC**  
GOPHER STATE ONE CALL  
1-800-252-1116  
www.gopherstateonecall.org

Prepared by:

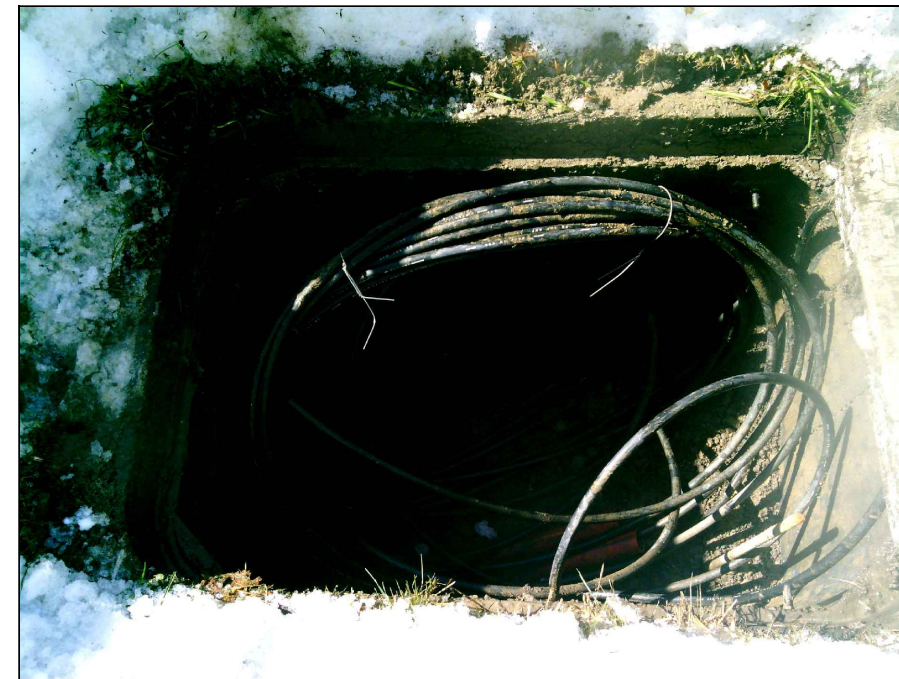
compass consultants inc.  
Perham, MN 218-346-3600  
TrustCompass.com

LEGEND

# Existing Access Points



77629-05



77629-05



1" = -

Route  
702 Comm Maple Grove  
City  
Maple Grove, MN  
County  
Hennepin  
Filename  
702 Comm Maple Grove  
Work Order #  
97391



160 2nd St SW  
Perham, MN 56573  
(218) 346-5500

### TRACKING

Staked By:  
Brian Adams 03/15/22  
Drafted By:  
AMB 03/16/22  
Project Manager  
Jerrod Storde 218-347-3629  
As-Built By:  
- -  
Revision  
- - -

### GSOC

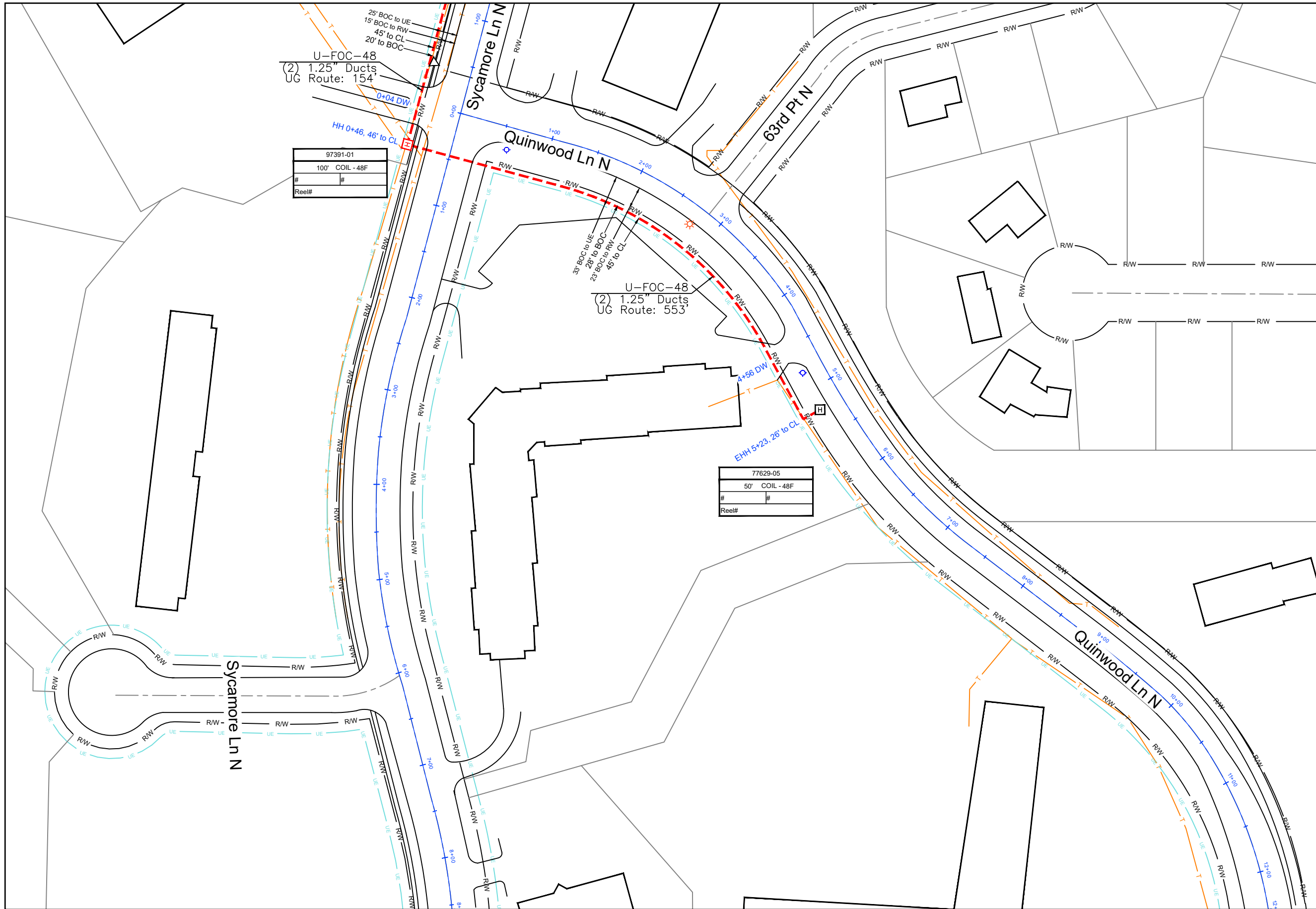
GOPHER STATE ONE CALL  
1-800-252-1116  
www.gopherstateonecall.org

Prepared by:



EXISTING AP

97391-02



U-FOC-48  
 (2) 1.25" Ducts  
 UG Route: 154

97391-01
100' COIL - 48F
#
Reel#

U-FOC-48  
 (2) 1.25" Ducts  
 UG Route: 553

77629-05
50' COIL - 48F
#
Reel#



1" = 100'

Route  
702 Comm Maple Grove  
 City  
Maple Grove, MN  
 County  
Hennepin  
 Filename  
702 Comm Maple Grove  
 Work Order #  
97391

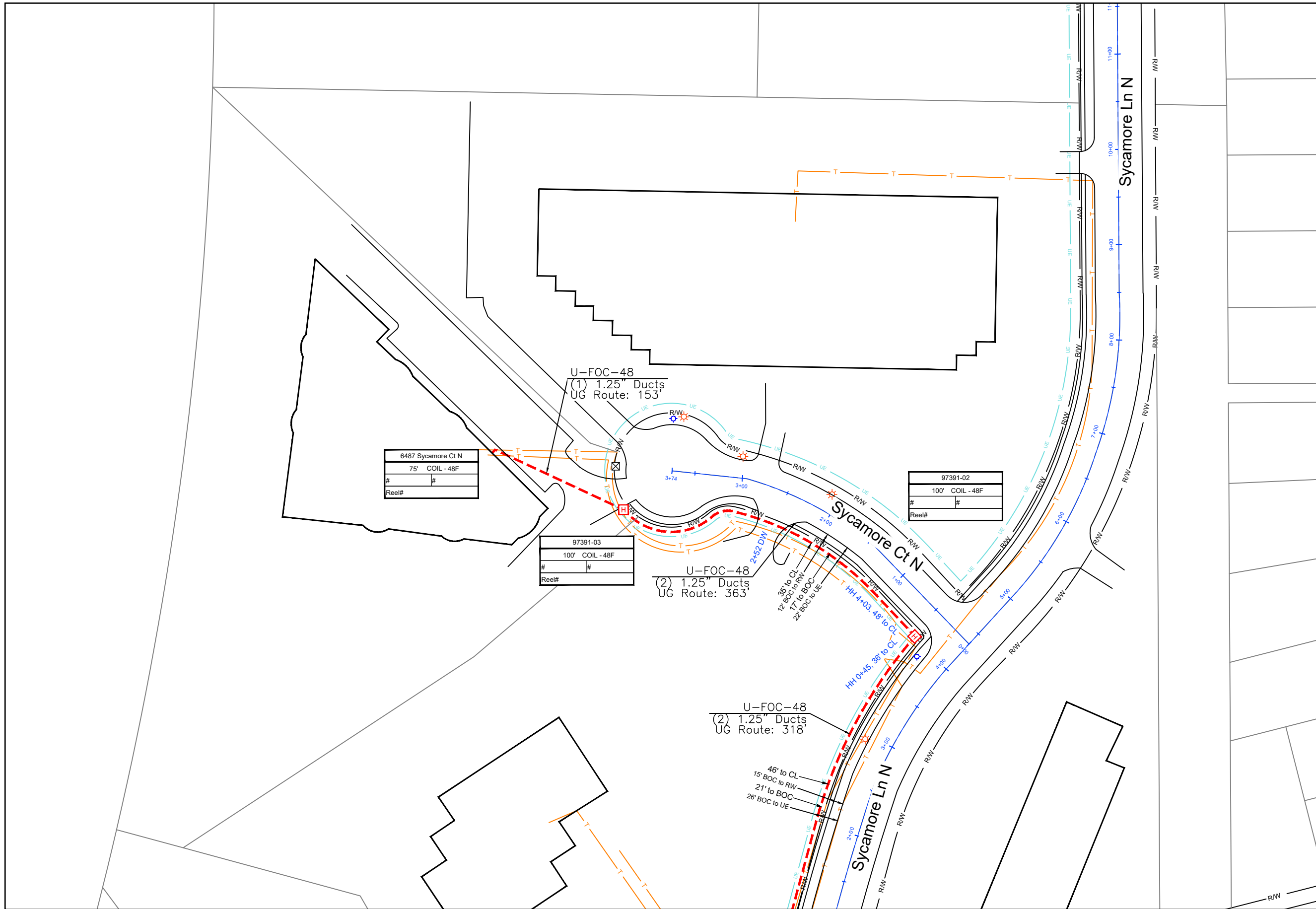
**arvig**  
 160 2nd St SW  
 Perham, MN 56573  
 (218) 346-5500

TRACKING	
Staked By:	Brian Adams 03/15/22
Drafted By:	AMB 03/16/22
Project Manager	Jerrold Storde 218-347-3629
As-Built By:	-
Revision	-

**GSOC**  
 GOPHER STATE ONE CALL  
 1-800-252-1116  
 www.gopherstateonecall.org

Prepared by:  
 **compass**  
 consultants inc.  
 Perham, MN 218-346-3600  
 TrustCompass.com

97391-01



97391-01



1" = 100'

Route	702 Comm Maple Grove
City	Maple Grove, MN
County	Hennepin
Filename	702 Comm Maple Grove
Work Order #	97391



160 2nd St SW  
Perham, MN 56573  
(218) 346-5500

**TRACKING**

Staked By:	Brian Adams	03/15/22
Drafted By:	AMB	03/16/22
Project Manager	Jerrold Strode	218-347-3629
As-Built By:	-	-
Revision	-	-

**GSOC**

GOPHER STATE ONE CALL  
1-800-252-1116  
www.gopherstateonecall.org



97391-02

