



CONTRACTOR NAME: Xcel Energy
 CONTRACTOR JOB #: 107610631 Q3 #: 2889104
 DESIGNED BY: Sam Quaal, T.C.S.
 DATE PREPARED: 4/15/22 DATE REVISED: -



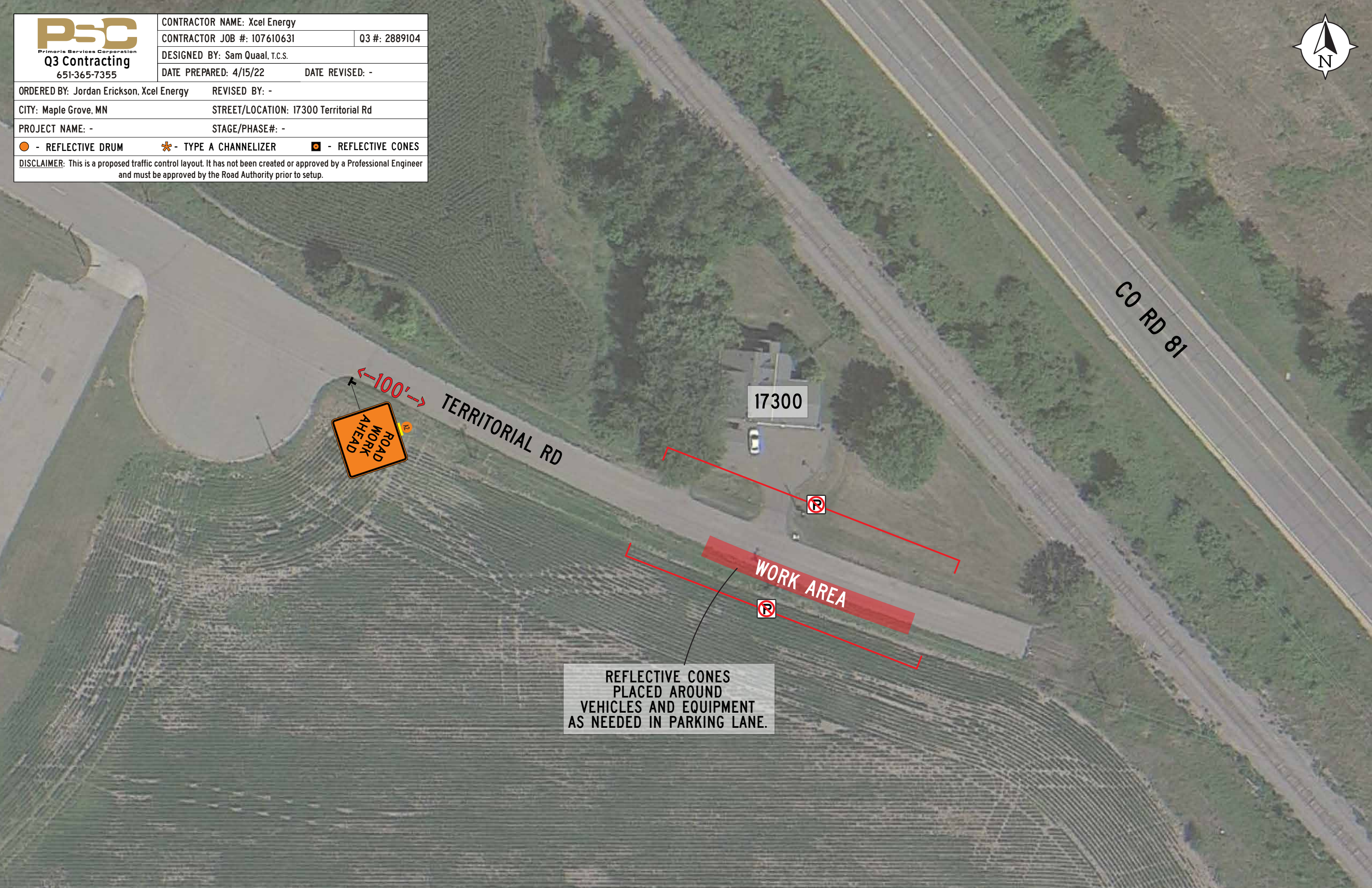
ORDERED BY: Jordan Erickson, Xcel Energy REVISED BY: -

CITY: Maple Grove, MN STREET/LOCATION: 17300 Territorial Rd

PROJECT NAME: - STAGE/PHASE#: -

● - REFLECTIVE DRUM ✱ - TYPE A CHANNELIZER ◻ - REFLECTIVE CONES

DISCLAIMER: This is a proposed traffic control layout. It has not been created or approved by a Professional Engineer and must be approved by the Road Authority prior to setup.



17300



REFLECTIVE CONES
 PLACED AROUND
 VEHICLES AND EQUIPMENT
 AS NEEDED IN PARKING LANE.

CO RD 81

TERRITORIAL RD

WORK AREA