



**105th Ave N and Northwood Area Improvements
Maple Grove, MN
Lumen Facilities
Reviewed by RJ Allison on 02/07/2022**

Below are the following Lumen conflicts as part of the 105th Ave N and Northwood Area Improvements Project in Maple Grove, MN.

SR Weiderman: Andy Burke (612.490.5474)
Terra Technologies: RJ Allison (612.388.7375)
Lumen: Krista Johnson (651.382.4151)

Construction Date: April 2022
County: Hennepin

Wire Center: MPGVMNXA
Zip Code: 55369

01. 105th Ave N, STA 20+65 (LT), Sheet C4.01
Conflict: Existing 50 pair crossing proposed storm sewer.
Solution: Road contractor to guard and protect cable.
02. 105th Ave N, STA 22+00 (LT), Sheet C4.01
Conflict: Existing 50 pair in conflict with proposed storm sewer.
Solution: Lumen to lower cable approximately 1' during construction.
03. 105th Ave N, STA 22+70 (LT), Sheet C4.01
Conflict: Existing 50 pair crossing above proposed watermain.
Solution: Road contractor to protect and support cable.
04. 105th Ave N, STA 22+90 (LT), Sheet C4.01
Conflict: Existing 50 pair in conflict with proposed storm sewer.
Solution: Lumen to lower cable approximately 1' during construction.
05. 105th Ave N, STA 24+30 (LT), Sheet C4.02
Conflict: Existing 50 pair crossing above proposed storm sewer.
Solution: Road contractor to protect and support cable.
06. 105th Ave N, STA 24+50 (LT), Sheet C4.02
Conflict: Existing 50 pair in conflict with proposed storm sewer.
Solution: Lumen to adjust cable 2' North and placed back at 50" below existing grade.
07. 105th Ave N, STA 24+80 (LT), Sheet C4.02
Conflict: Existing pedestal in conflict with proposed trail.
Solution: Lumen to adjust pedestal 8' South and placed at proposed grade. Splice in slack as necessary.
08. 105th Ave N, STA 25+25 (LT), Sheet C4.02
Conflict: Existing 50 pair crossing above proposed watermain.
Solution: Road contractor to protect and support cable.

09. 105th Ave N, STA 27+90 (LT), Sheet C4.02

Conflict: Existing pedestal in conflict with proposed trail.

Solution: Lumen to adjust pedestal 8' South and placed at proposed grade. Splice in slack as necessary.

10. RR Watermain Crossing, STA 260+25 (LT), Sheet C4.08

Conflict: Existing pedestal in close proximity to proposed watermain.

Solution: Road contractor to guard and protect pedestal.

11. RR Watermain Crossing, STA 265+50 (CL), Sheet C4.09

Conflict: Existing 6 pair crossing above proposed watermain.

Solution: Road contractor to protect and support cable.

PLANS PREPARED FOR



LUMEN ENGINEER:
EMAIL:
PHONE:
LUMEN CONSTRUCTION CONTACT:
EMAIL:
PHONE:
WIRECENTER:

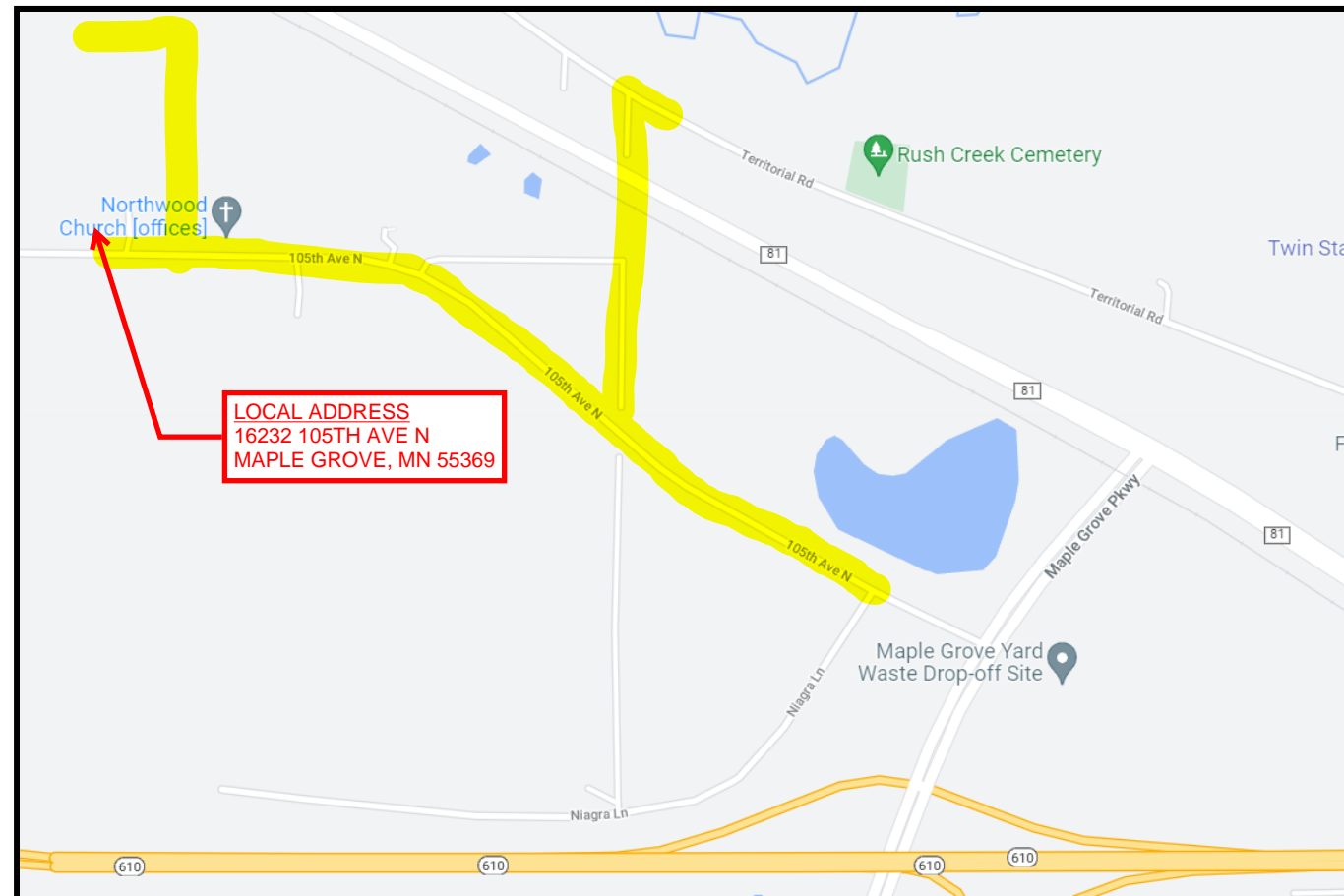
PLANS PREPARED BY



TT ENGINEER:
PHONE:
EMAIL:

PROJECT CONTACT

OWNER:
PHONE:
EMAIL:
PROJECT ENGINEER:
PHONE:
EMAIL:
SURVEY/STAKING:
PHONE:
EMAIL:
ROAD CONTRACTOR:
PHONE:
EMAIL:



LOCATION MAP

NOT TO SCALE

FOR REFERENCE ONLY

PERMITS REQUIRED: YES NO

CITY:
 COUNTY:
 STATE:
 RAILROAD:
 PIPELINE:
 DNR:
 MISCELLANEOUS:

CUTS REQUIRED: YES NO

FIBER OPTIC
 COPPER

MIGRATIONS REQUIRED: YES NO

PRECONSTRUCTION MEETING DATE:
EXPECTED ROADWAY CONSTRUCTION START DATE:

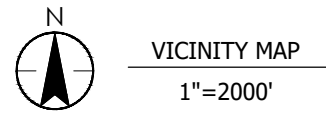
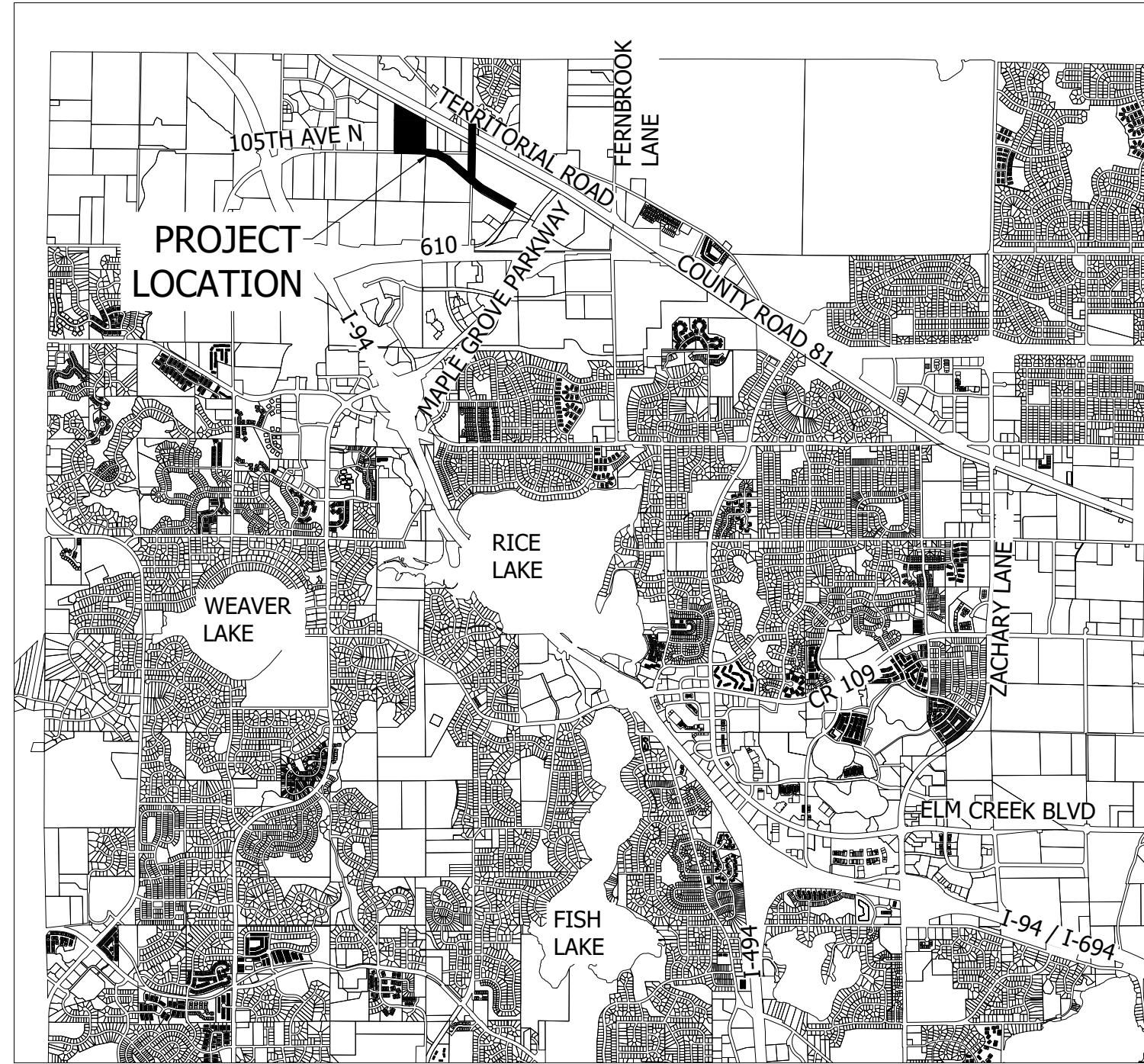
NOTES:
ALL EXISTING AND PROPOSED CONDITIONS ARE BASED ON INFORMATION PROVIDED BY OTHERS. LUMEN CANNOT BE RESPONSIBLE FOR THE ACCURACY OF INFORMATION AND/OR PLANS PROVIDED BY OUTSIDE PARTIES. FACILITY LOCATIONS, DEPTHS AND ELEVATIONS SHOULD BE FIELD VERIFIED PRIOR TO CONSTRUCTION.
PROPOSED DESIGN MODIFICATIONS ARE RECOMMENDATIONS ONLY AND SHOULD BE VERIFIED PRIOR TO CONSTRUCTION.

REVISION	DATE

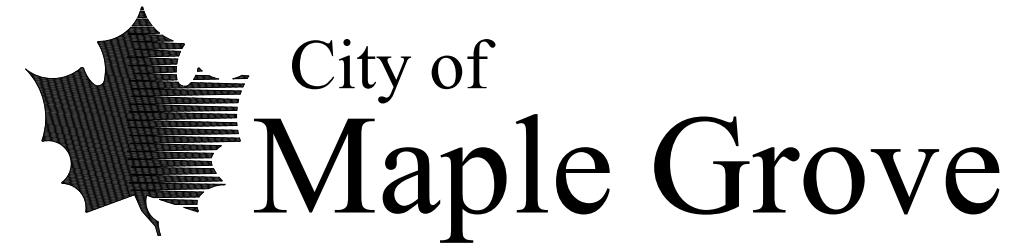


Gopher State One Call
1-800-252-1100 OR
1-651-454-0002
WWW.GOPHERSTATEONCALL.ORG

THE CONTRACTOR SHALL VERIFY AND BE RESPONSIBLE FOR ALL DIMENSIONS. DO NOT SCALE THE DRAWING. ANY ERRORS OR OMISSIONS SHALL BE REPORTED TO STANTEC WITHOUT DELAY. REPRODUCTION OR USE FOR ANY PURPOSE OTHER THAN THAT AUTHORIZED BY STANTEC IS FORBIDDEN.



MARK STEFFENSON	MAYOR
KRISTY BARNETT	COUNCILMEMBER
JUDY HANSON	COUNCILMEMBER
KAREN JAEGER	COUNCILMEMBER
PHIL LEITH	COUNCILMEMBER
HEIDI NELSON	ADMINISTRATOR
KENNETH ASHFELD	PUBLIC WORKS DIRECTOR/CITY ENGINEER
JUSTIN TEMPLIN	CITY ATTORNEY



NORTHWOOD CHURCH/WESTON COMMONS STREET AND UTILITY IMPROVEMENTS

CITY PROJECT NUMBER 21-16
2021

SHEET NUMBER	SHEET TITLE
GENERAL	
G0.01	TITLE SHEET
G0.02	LEGEND
G0.03	CONSTRUCTION NOTES AND SCHEDULES
G0.04	LOCATION PLAN
CIVIL	
C0.01-C0.04	EXISTING CONDITIONS AND REMOVALS
C1.01	TYPICAL SECTIONS
C2.01-C2.06	EROSION CONTROL PLAN
C4.01-C4.15	SANITARY SEWER AND WATERMAIN PLAN AND PROFILE
C5.01-C5.06	STORM SEWER PLAN AND PROFILE
C6.01-C6.07	STREET PLAN AND PROFILE
C6.08-C6.10	INTERSECTION DETAILS
C7.00	EARTHWORK VOLUMES
C7.01-C7.12	CROSS SECTIONS
C8.01-C8.03	STANDARD DETAILS
T1.01-T1.03	SIGNING AND STRIPING PLAN
T9.01	TRAFFIC CONTROL PLAN
ELECTRICAL	
E1.01-E1.04	STREET LIGHTING PLAN
E6.01	ELECTRICAL DETAILS

THIS PLAN SET CONTAINS 71 SHEETS

Legend	EXISTING	REMOVE/ABANDON	PROPOSED
Existing Copper Cable			
Existing Fiber Cable			
Existing Overhead Wire			
Existing Pedestal			
Existing Manhole			
Existing Handhole			
Existing Pole			
Cross Box			



HEREBY CERTIFY THAT THIS PLAN, SPECIFICATION, OR REPORT WAS PREPARED BY ME OR UNDER MY DIRECT SUPERVISION AND THAT I AM A DULY LICENSED PROFESSIONAL ENGINEER UNDER THE LAWS OF THE STATE OF MINNESOTA.
 PRINT NAME: TYLER J. MCGLEETE
 SIGNATURE: _____
 DATE: _____
 I.C. NO. _____ 51774

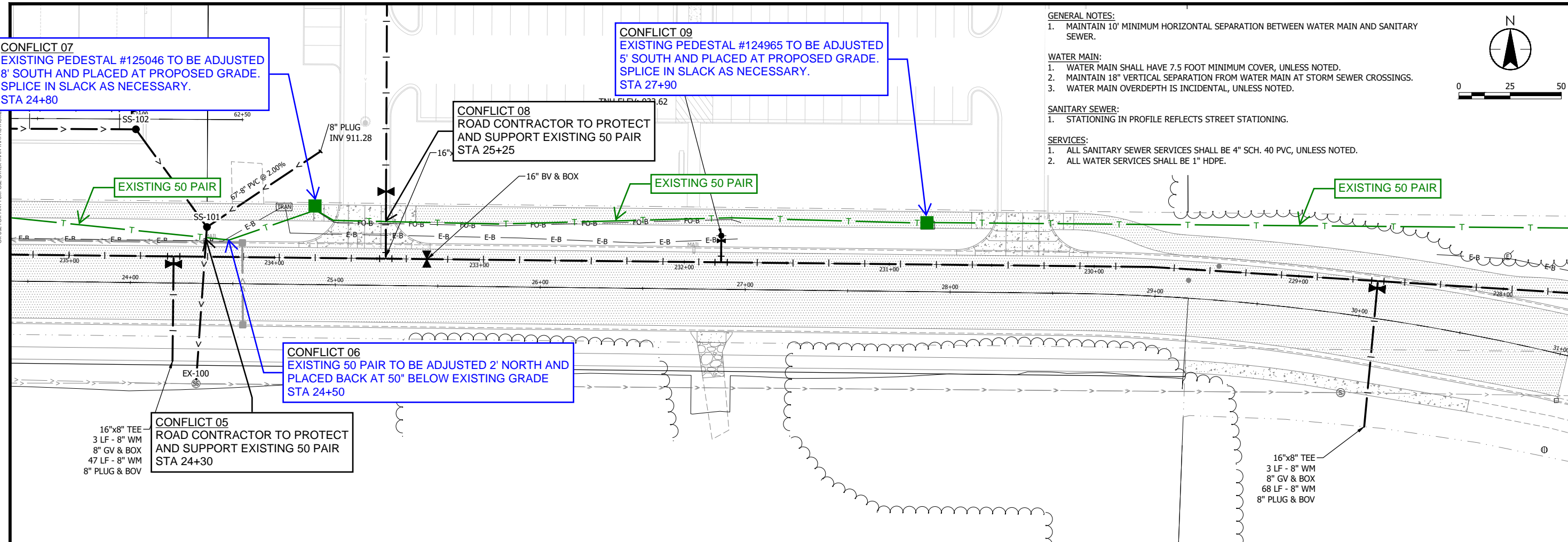
CITY OF MAPLE GROVE, MINNESOTA
 NORTHWOOD CHURCH/WESTON COMMONS
 STREET AND UTILITY IMPROVEMENTS - CITY PROJECT NO. 21-16
 TITLE SHEET

NO	REVISION	DATE

SURVEY: TNA
 DRAWN: JLT/ASB
 DESIGNED: JLT/ASB
 CHECKED: TJM
 APPROVED: TJM
 PROJ. NO.: 193805396

SHEET NUMBER
G001

THE CONTRACTOR SHALL VERIFY AND BE RESPONSIBLE FOR ALL DIMENSIONS. DO NOT SCALE THE DRAWING. ANY ERRORS OR OMISSIONS SHALL BE REPORTED TO STANTEC WITHOUT DELAY. NO USE FOR ANY PURPOSE OTHER THAN THAT AUTHORIZED BY STANTEC.



GENERAL NOTES:

1. MAINTAIN 10' MINIMUM HORIZONTAL SEPARATION BETWEEN WATER MAIN AND SANITARY SEWER.

WATER MAIN:

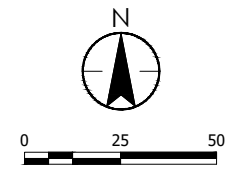
1. WATER MAIN SHALL HAVE 7.5 FOOT MINIMUM COVER, UNLESS NOTED.
2. MAINTAIN 18" VERTICAL SEPARATION FROM WATER MAIN AT STORM SEWER CROSSINGS.
3. WATER MAIN OVERDEPTH IS INCIDENTAL, UNLESS NOTED.

SANITARY SEWER:

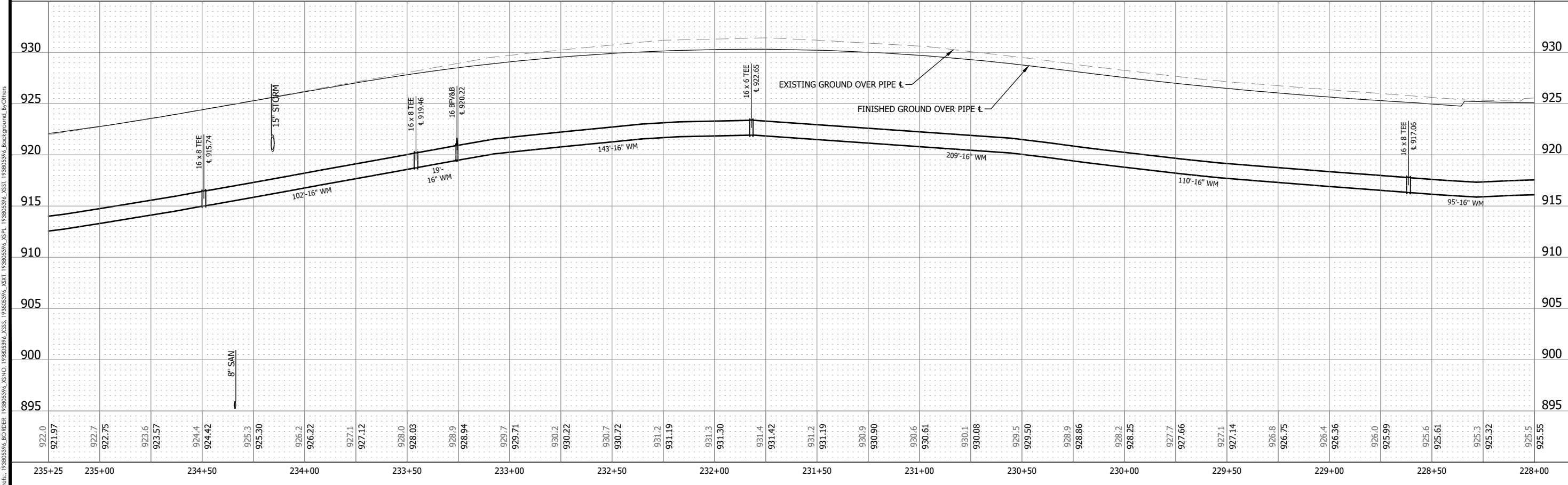
1. STATIONING IN PROFILE REFLECTS STREET STATIONING.

SERVICES:

1. ALL SANITARY SEWER SERVICES SHALL BE 4" SCH. 40 PVC, UNLESS NOTED.
2. ALL WATER SERVICES SHALL BE 1" HDPE.



105TH AVE N



Stantec

733 Marquette Avenue, Suite 1000
 Minneapolis, MN 55402
 www.stantec.com

I hereby certify that this plan, specification, or report was prepared by me or under my direct supervision and that I am a duly licensed professional engineer under the laws of the state of Minnesota.
 PRINT NAME: TYLER J. MCLEETE
 SIGNATURE: *[Signature]*
 DATE: 12/16/2021 I.C. NO. 51774

CITY OF MAPLE GROVE, MINNESOTA
 NORTHWOOD CHURCH/WESTON COMMONS
 STREET AND UTILITY IMPROVEMENTS - CITY PROJECT NO. 21-16
 105TH AVE N WATER MAIN

NO.	REVISION	DATE

SURVEY	TNA
DRAWN	JLT/ASB
DESIGNED	JLT/ASB
CHECKED	TMM
APPROVED	TJM
PROJ. NO.	193805396
SHEET NUMBER	C4.02

THE CONTRACTOR SHALL VERIFY AND BE RESPONSIBLE FOR ALL DIMENSIONS. DO NOT SCALE THE DRAWING. ANY ERRORS OR OMISSIONS SHALL BE REPORTED TO STANTEC WITHOUT DELAY. STANTEC SHALL NOT BE RESPONSIBLE FOR ANY ERRORS OR OMISSIONS MADE BY THE CONTRACTOR OR FOR ANY PURPOSE OTHER THAN THAT AUTHORIZED BY STANTEC.

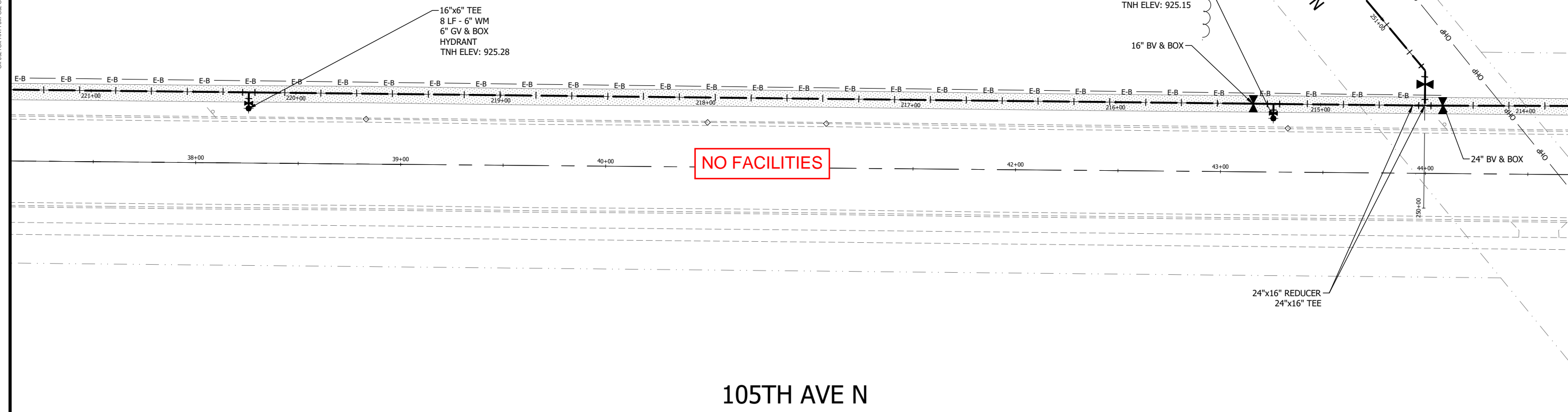
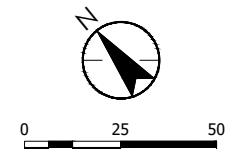
GENERAL NOTES:
 1. MAINTAIN 10' MINIMUM HORIZONTAL SEPARATION BETWEEN WATER MAIN AND SANITARY SEWER.

NO LUMEN CONFLICTS

WATER MAIN:
 1. WATER MAIN SHALL HAVE 7.5 FOOT MINIMUM COVER, UNLESS NOTED.
 2. MAINTAIN 18" VERTICAL SEPARATION FROM WATER MAIN AT STORM SEWER CROSSINGS.
 3. WATER MAIN OVERDEPTH IS INCIDENTAL, UNLESS NOTED.

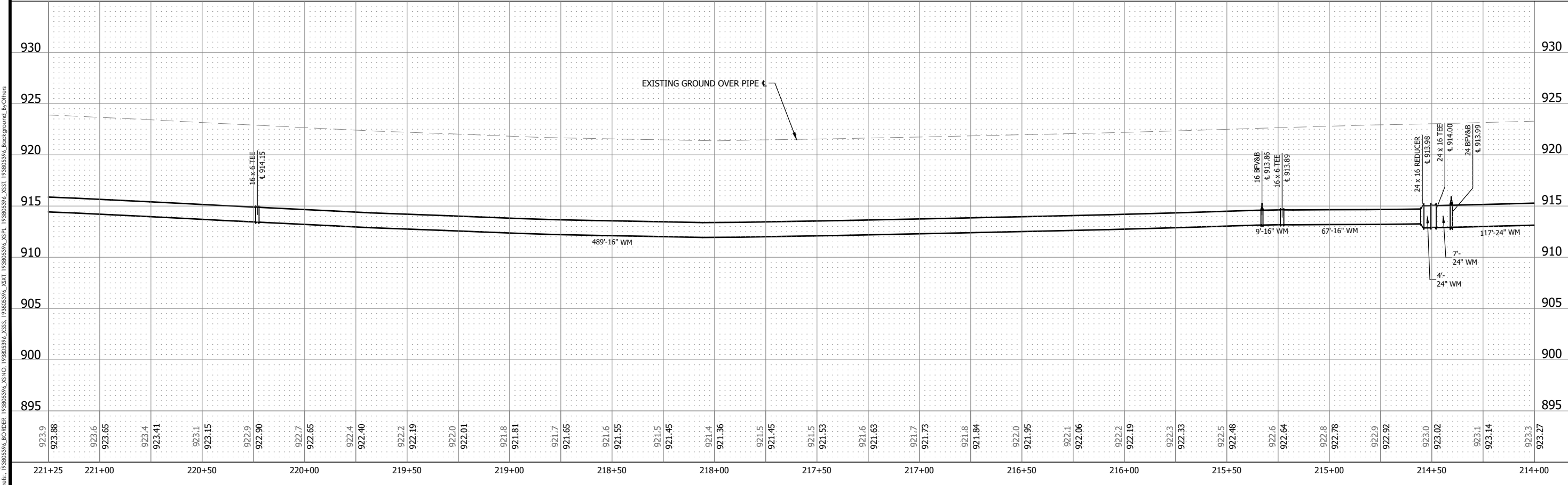
SANITARY SEWER:
 1. STATIONING IN PROFILE REFLECTS STREET STATIONING.

SERVICES:
 1. ALL SANITARY SEWER SERVICES SHALL BE 4" SCH. 40 PVC, UNLESS NOTED.
 2. ALL WATER SERVICES SHALL BE 1" HDPE.



NO FACILITIES

105TH AVE N



Stantec

733 Marquette Avenue, Suite 1000
 Minneapolis, MN 55402
 www.stantec.com

I HEREBY CERTIFY THAT THIS PLAN, SPECIFICATION, OR REPORT WAS PREPARED BY ME OR UNDER MY DIRECT SUPERVISION AND THAT I AM A DULY LICENSED PROFESSIONAL ENGINEER UNDER THE LAWS OF THE STATE OF MINNESOTA.

SIGNATURE: *[Signature]* PRINT NAME: TYLER J. MCLEETE
 DATE: 12/16/2021 LIC. NO. 51774

CITY OF MAPLE GROVE, MINNESOTA
NORTHWOOD CHURCH/WESTON COMMONS
 STREET AND UTILITY IMPROVEMENTS - CITY PROJECT NO. 21-16
 105TH AVE N WATER MAIN

NO.	REVISION	DATE

SURVEY	TNA
DRAWN	JLT/ASB
DESIGNED	JLT/ASB
CHECKED	TMM
APPROVED	TJM
PROJ. NO.	193805396
SHEET NUMBER	C4.04

Plot Date: 12/16/2021 - 10:17am
 Drawing name: C:\New_sln_bk_in\Info01\193805396_C401.dwg
 Xref1: 193805396_XREF1.dwg Xref2: 193805396_XREF2.dwg Xref3: 193805396_XREF3.dwg Xref4: 193805396_XREF4.dwg Xref5: 193805396_XREF5.dwg Xref6: 193805396_XREF6.dwg Xref7: 193805396_XREF7.dwg Xref8: 193805396_XREF8.dwg Xref9: 193805396_XREF9.dwg Xref10: 193805396_XREF10.dwg Xref11: 193805396_XREF11.dwg Xref12: 193805396_XREF12.dwg Xref13: 193805396_XREF13.dwg Xref14: 193805396_XREF14.dwg Xref15: 193805396_XREF15.dwg Xref16: 193805396_XREF16.dwg Xref17: 193805396_XREF17.dwg Xref18: 193805396_XREF18.dwg Xref19: 193805396_XREF19.dwg Xref20: 193805396_XREF20.dwg Xref21: 193805396_XREF21.dwg Xref22: 193805396_XREF22.dwg Xref23: 193805396_XREF23.dwg Xref24: 193805396_XREF24.dwg Xref25: 193805396_XREF25.dwg Xref26: 193805396_XREF26.dwg Xref27: 193805396_XREF27.dwg Xref28: 193805396_XREF28.dwg Xref29: 193805396_XREF29.dwg Xref30: 193805396_XREF30.dwg Xref31: 193805396_XREF31.dwg Xref32: 193805396_XREF32.dwg Xref33: 193805396_XREF33.dwg Xref34: 193805396_XREF34.dwg Xref35: 193805396_XREF35.dwg Xref36: 193805396_XREF36.dwg Xref37: 193805396_XREF37.dwg Xref38: 193805396_XREF38.dwg Xref39: 193805396_XREF39.dwg Xref40: 193805396_XREF40.dwg Xref41: 193805396_XREF41.dwg Xref42: 193805396_XREF42.dwg Xref43: 193805396_XREF43.dwg Xref44: 193805396_XREF44.dwg Xref45: 193805396_XREF45.dwg Xref46: 193805396_XREF46.dwg Xref47: 193805396_XREF47.dwg Xref48: 193805396_XREF48.dwg Xref49: 193805396_XREF49.dwg Xref50: 193805396_XREF50.dwg Xref51: 193805396_XREF51.dwg Xref52: 193805396_XREF52.dwg Xref53: 193805396_XREF53.dwg Xref54: 193805396_XREF54.dwg Xref55: 193805396_XREF55.dwg Xref56: 193805396_XREF56.dwg Xref57: 193805396_XREF57.dwg Xref58: 193805396_XREF58.dwg Xref59: 193805396_XREF59.dwg Xref60: 193805396_XREF60.dwg Xref61: 193805396_XREF61.dwg Xref62: 193805396_XREF62.dwg Xref63: 193805396_XREF63.dwg Xref64: 193805396_XREF64.dwg Xref65: 193805396_XREF65.dwg Xref66: 193805396_XREF66.dwg Xref67: 193805396_XREF67.dwg Xref68: 193805396_XREF68.dwg Xref69: 193805396_XREF69.dwg Xref70: 193805396_XREF70.dwg Xref71: 193805396_XREF71.dwg Xref72: 193805396_XREF72.dwg Xref73: 193805396_XREF73.dwg Xref74: 193805396_XREF74.dwg Xref75: 193805396_XREF75.dwg Xref76: 193805396_XREF76.dwg Xref77: 193805396_XREF77.dwg Xref78: 193805396_XREF78.dwg Xref79: 193805396_XREF79.dwg Xref80: 193805396_XREF80.dwg Xref81: 193805396_XREF81.dwg Xref82: 193805396_XREF82.dwg Xref83: 193805396_XREF83.dwg Xref84: 193805396_XREF84.dwg Xref85: 193805396_XREF85.dwg Xref86: 193805396_XREF86.dwg Xref87: 193805396_XREF87.dwg Xref88: 193805396_XREF88.dwg Xref89: 193805396_XREF89.dwg Xref90: 193805396_XREF90.dwg Xref91: 193805396_XREF91.dwg Xref92: 193805396_XREF92.dwg Xref93: 193805396_XREF93.dwg Xref94: 193805396_XREF94.dwg Xref95: 193805396_XREF95.dwg Xref96: 193805396_XREF96.dwg Xref97: 193805396_XREF97.dwg Xref98: 193805396_XREF98.dwg Xref99: 193805396_XREF99.dwg Xref100: 193805396_XREF100.dwg

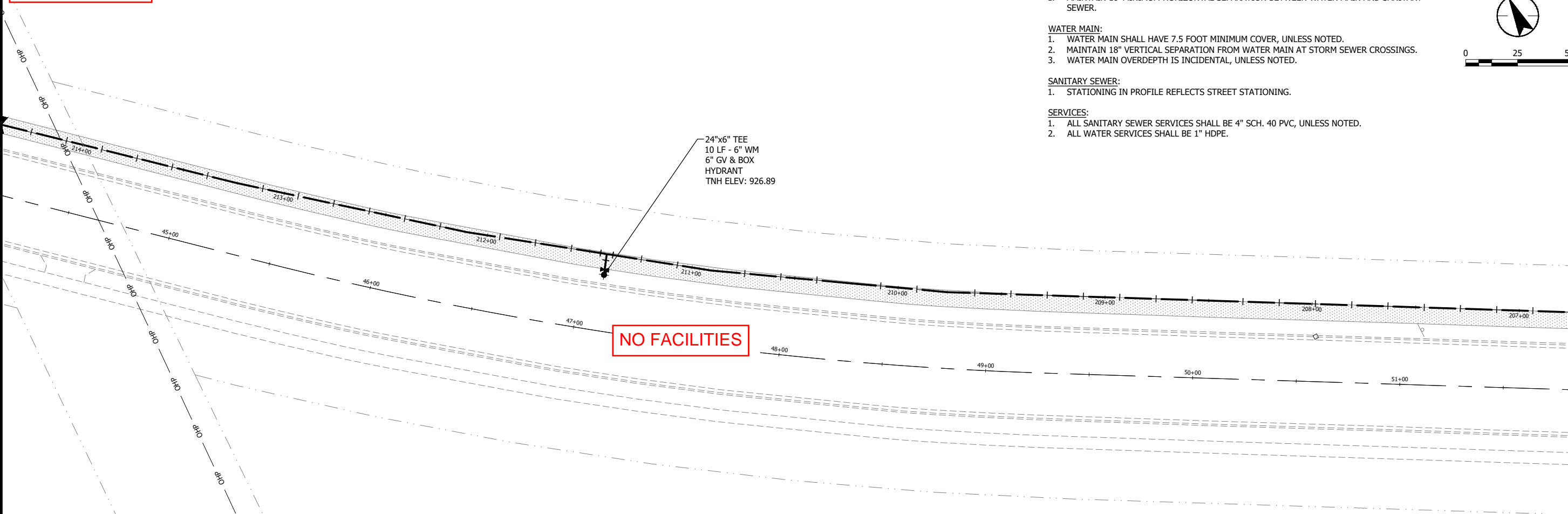
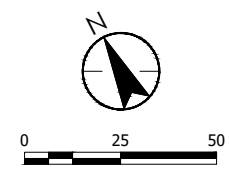
THE CONTRACTOR SHALL VERIFY AND BE RESPONSIBLE FOR ALL DIMENSIONS. DO NOT SCALE THE DRAWING. ANY ERRORS OR OMISSIONS SHALL BE REPORTED TO STANTEC WITHOUT DELAY. STANTEC SHALL NOT BE RESPONSIBLE FOR ANY ERRORS OR OMISSIONS OTHER THAN THOSE AUTHORIZED BY STANTEC. FOR USE FOR ANY PURPOSE OTHER THAN THAT AUTHORIZED BY STANTEC IS FORBIDDEN.

NO LUMEN CONFLICTS

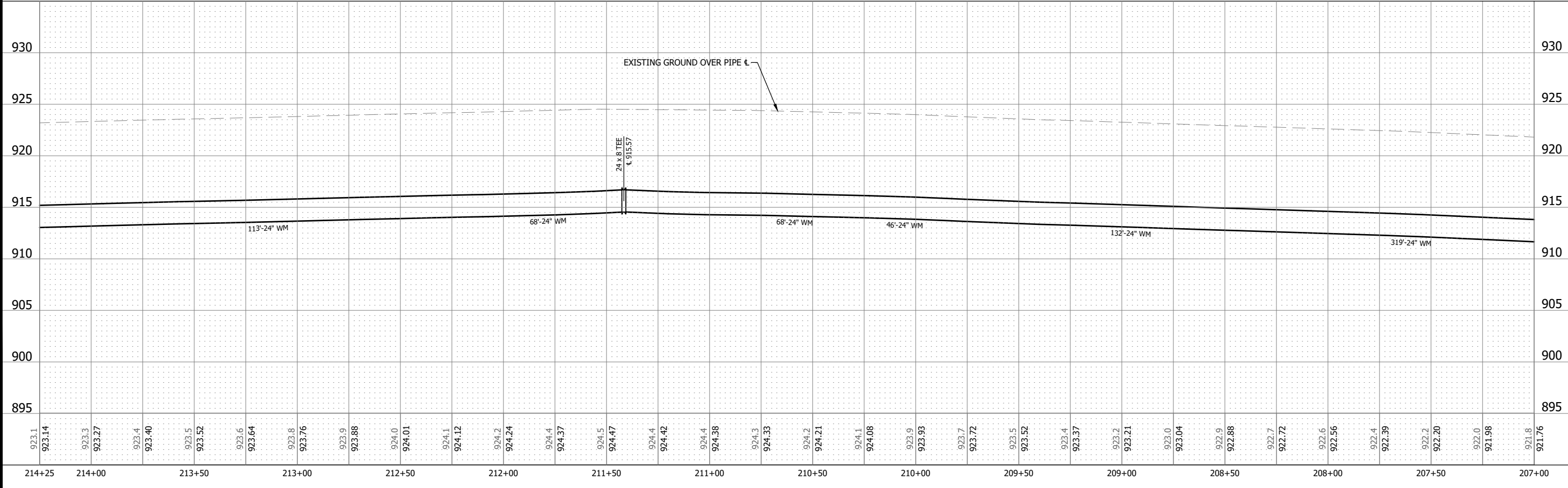
NO FACILITIES

24"x6" TEE
 10 LF - 6" WM
 6" GV & BOX
 HYDRANT
 TNH ELEV: 926.89

- GENERAL NOTES:**
1. MAINTAIN 10' MINIMUM HORIZONTAL SEPARATION BETWEEN WATER MAIN AND SANITARY SEWER.
- WATER MAIN:**
1. WATER MAIN SHALL HAVE 7.5 FOOT MINIMUM COVER, UNLESS NOTED.
 2. MAINTAIN 18" VERTICAL SEPARATION FROM WATER MAIN AT STORM SEWER CROSSINGS.
 3. WATER MAIN OVERDEPTH IS INCIDENTAL, UNLESS NOTED.
- SANITARY SEWER:**
1. STATIONING IN PROFILE REFLECTS STREET STATIONING.
- SERVICES:**
1. ALL SANITARY SEWER SERVICES SHALL BE 4" SCH. 40 PVC, UNLESS NOTED.
 2. ALL WATER SERVICES SHALL BE 1" HDPE.



105TH AVE N



733 Marquette Avenue, Suite 1000
 Minneapolis, MN 55402
 www.stantec.com

DATE: 12/16/2021 IUC NO. 51774

SIGNATURE: *[Signature]*
 PRINT NAME: TYLER J. MCLEETE

HEREBY CERTIFY THAT THIS PLAN, SPECIFICATION, OR REPORT WAS PREPARED BY ME OR UNDER MY DIRECT SUPERVISION AND THAT I AM A DULY LICENSED PROFESSIONAL ENGINEER UNDER THE LAWS OF THE STATE OF MINNESOTA.

CITY OF MAPLE GROVE, MINNESOTA
 NORTHWOOD CHURCH/WESTON COMMONS
 STREET AND UTILITY IMPROVEMENTS - CITY PROJECT NO. 21-16
 105TH AVE N WATER MAIN

NO.	REVISION	DATE

SURVEY	TNA
DRAWN	JLT/ASB
DESIGNED	JLT/ASB
CHECKED	TMB
APPROVED	TJM
PROJ. NO.	193805396

SHEET NUMBER
C4.05

THE CONTRACTOR SHALL VERIFY AND BE RESPONSIBLE FOR ALL DIMENSIONS. DO NOT SCALE THE DRAWING. ANY ERRORS OR OMISSIONS SHALL BE REPORTED TO STANTEC WITHOUT DELAY. NO USE FOR ANY PURPOSE OTHER THAN THAT AUTHORIZED BY STANTEC IS FORBIDDEN.

GENERAL NOTES:

1. MAINTAIN 10' MINIMUM HORIZONTAL SEPARATION BETWEEN WATER MAIN AND SANITARY SEWER.

NO LUMEN CONFLICTS

WATER MAIN:

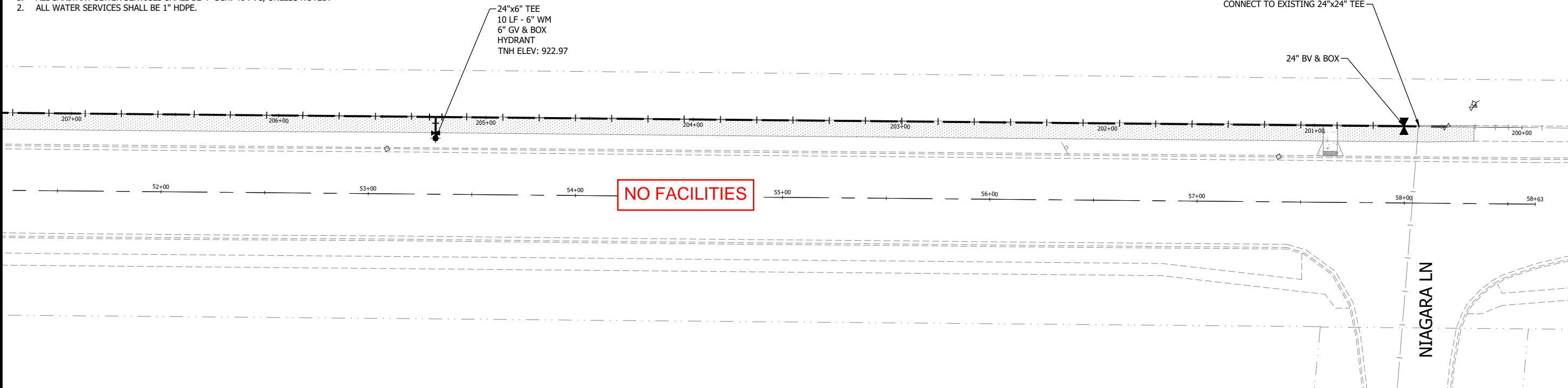
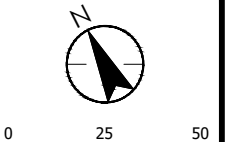
1. WATER MAIN SHALL HAVE 7.5 FOOT MINIMUM COVER, UNLESS NOTED.
2. MAINTAIN 18" VERTICAL SEPARATION FROM WATER MAIN AT STORM SEWER CROSSINGS.
3. WATER MAIN OVERDEPTH IS INCIDENTAL, UNLESS NOTED.

SANITARY SEWER:

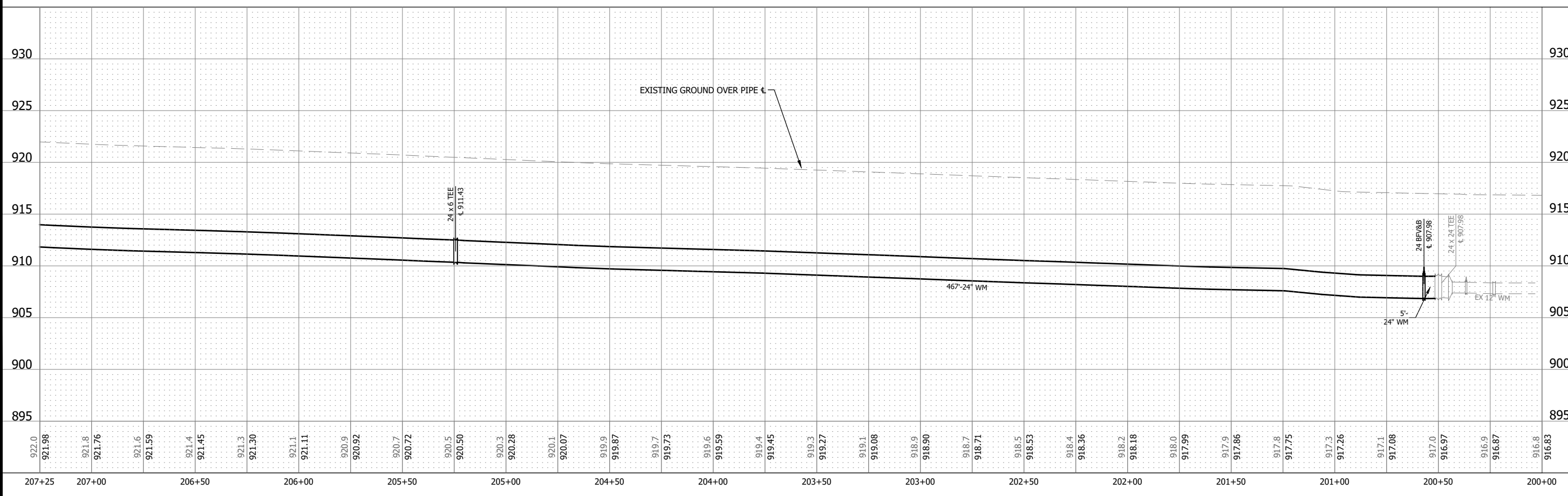
1. STATIONING IN PROFILE REFLECTS STREET STATIONING.

SERVICES:

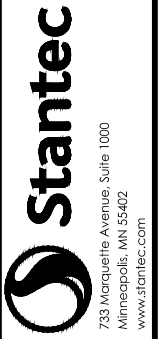
1. ALL SANITARY SEWER SERVICES SHALL BE 4" SCH. 40 PVC, UNLESS NOTED.
2. ALL WATER SERVICES SHALL BE 1" HDPE.



105TH AVE N



Plot Date: 12/16/2021 - 10:18am
 Drawing Name: C:\p\win_bin_info\01\193805396_C401.dwg
 Author: 193805396_01DORNER, 193805396_01NO, 193805396_01SS, 193805396_01XT, 193805396_01PL, 193805396_01SS, 193805396_Background_ByOthers



733 Marquette Avenue, Suite 1000
 Minneapolis, MN 55402
 www.stantec.com

I HEREBY CERTIFY THAT THIS PLAN, SPECIFICATION, OR REPORT WAS PREPARED BY ME OR UNDER MY DIRECT SUPERVISION AND THAT I AM A DULY LICENSED PROFESSIONAL ENGINEER UNDER THE LAWS OF THE STATE OF MINNESOTA.
 PRINT NAME: TYLER J. MCLEETE
 SIGNATURE: *[Signature]*

SHEET NO.: 1216/2021 UIC. NO.: 51774
 DATE: 12/16/2021

CITY OF MAPLE GROVE, MINNESOTA
NORTHWOOD CHURCH/WESTON COMMONS
 STREET AND UTILITY IMPROVEMENTS - CITY PROJECT NO. 21-16
 105TH AVE N WATER MAIN

NO.	REVISION	DATE

SHEET NUMBER
C4.06

THE CONTRACTOR SHALL VERIFY AND BE RESPONSIBLE FOR ALL DIMENSIONS. DO NOT SCALE THE DRAWING. ANY ERRORS OR OMISSIONS SHALL BE REPORTED TO STANTEC WITHOUT DELAY. NO USE FOR ANY PURPOSE OTHER THAN THAT AUTHORIZED BY STANTEC IS FORBIDDEN.

GENERAL NOTES:

- 1. MAINTAIN 10' MINIMUM HORIZONTAL SEPARATION BETWEEN WATER MAIN AND SANITARY SEWER.

WATER MAIN:

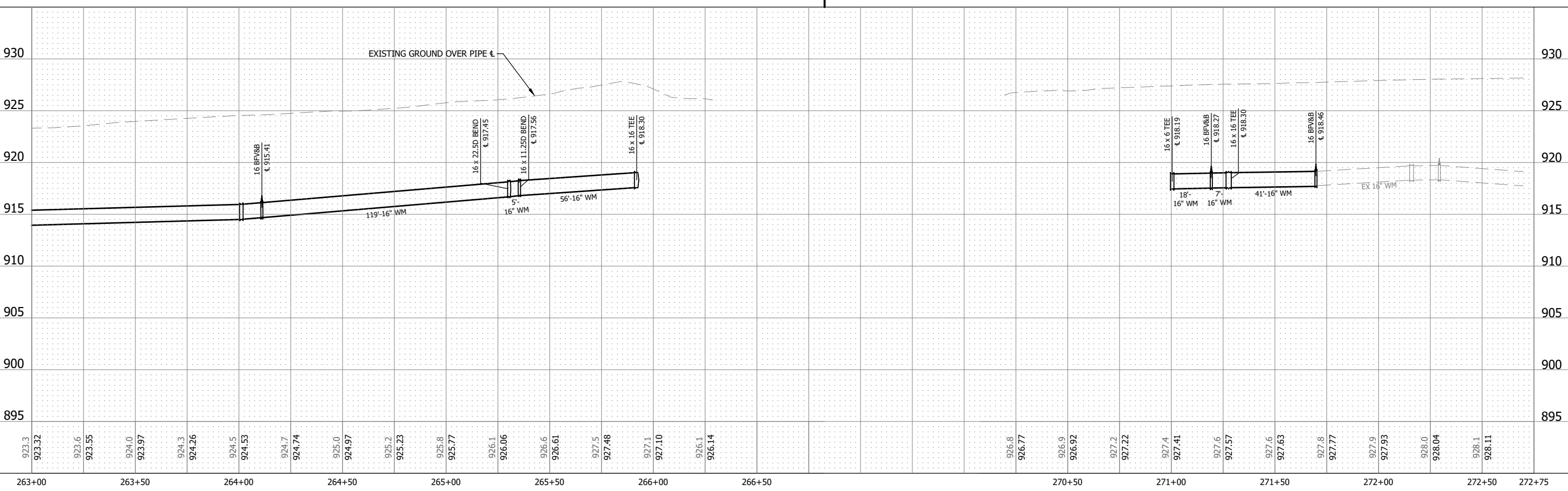
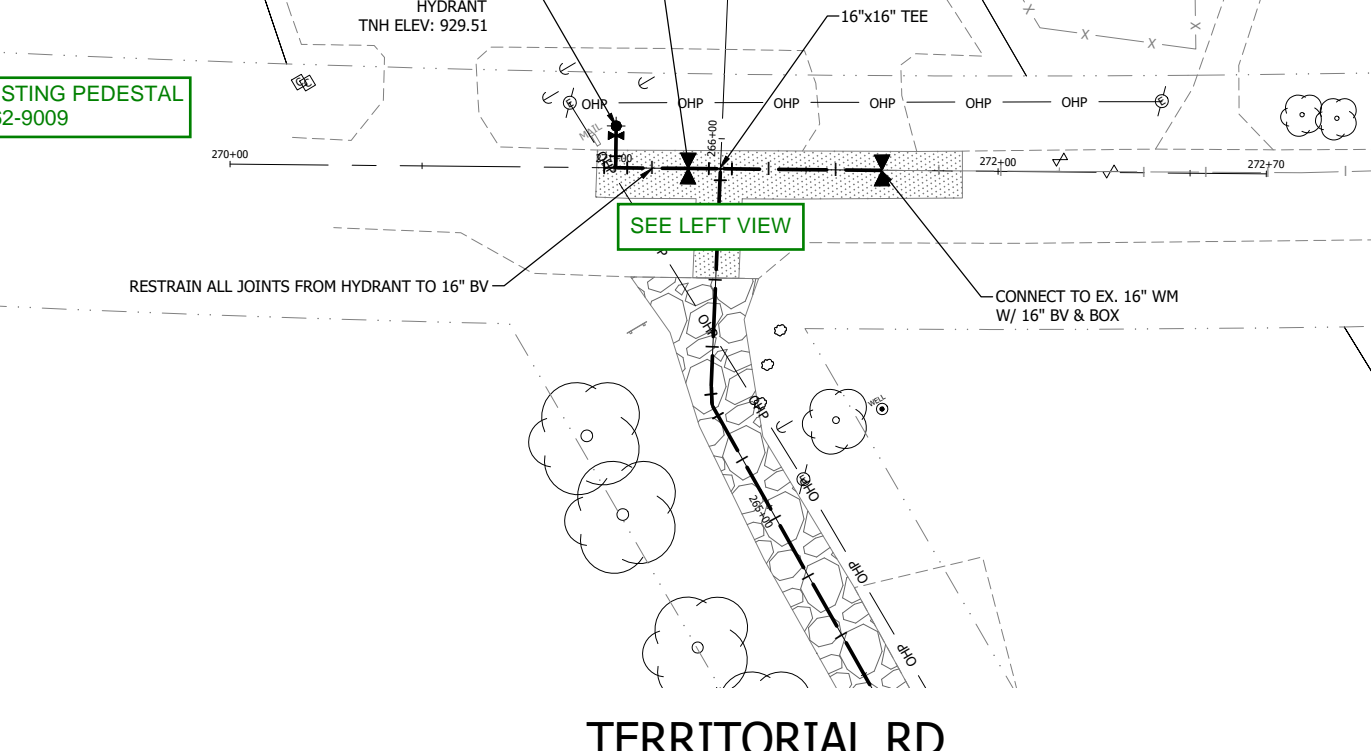
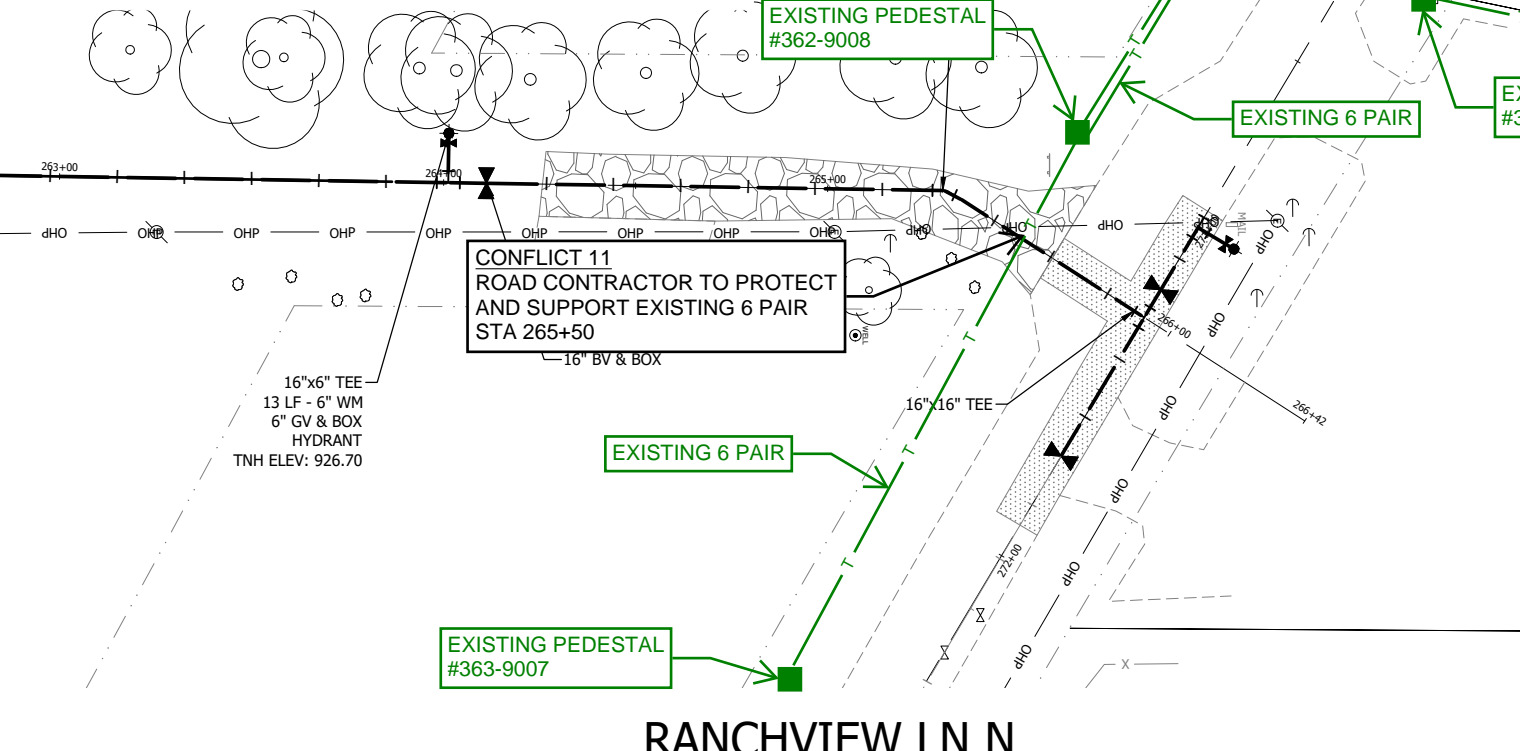
- 1. WATER MAIN SHALL HAVE 7.5 FOOT MINIMUM COVER, UNLESS NOTED.
- 2. MAINTAIN 18" VERTICAL SEPARATION FROM WATER MAIN AT STORM SEWER CROSSINGS.
- 3. WATER MAIN OVERDEPTH IS INCIDENTAL, UNLESS NOTED.

SANITARY SEWER:

- 1. STATIONING IN PROFILE REFLECTS STREET STATIONING.

SERVICES:

- 1. ALL SANITARY SEWER SERVICES SHALL BE 4" SCH. 40 PVC, UNLESS NOTED.
- 2. ALL WATER SERVICES SHALL BE 1" HDPE.



HEREBY CERTIFY THAT THIS PLAN, SPECIFICATION, OR REPORT WAS PREPARED BY ME OR UNDER MY DIRECT SUPERVISION AND THAT I AM A DULY LICENSED PROFESSIONAL ENGINEER UNDER THE LAWS OF THE STATE OF MINNESOTA.
SIGNATURE: Tyler J. Macleite
DATE: 12/16/2021 I.C. NO. 51774

Plot Date: 12/16/2021 - 10:20am
Drawing name: C:_New_fim_bri_in\Info\01\98005396_C401.dwg
Xref: 193805396_010.DWG, 193805396_020.DWG, 193805396_030.DWG, 193805396_040.DWG, 193805396_050.DWG, 193805396_060.DWG, 193805396_070.DWG, 193805396_080.DWG, 193805396_090.DWG, 193805396_100.DWG, 193805396_110.DWG, 193805396_120.DWG, 193805396_130.DWG, 193805396_140.DWG, 193805396_150.DWG, 193805396_160.DWG, 193805396_170.DWG, 193805396_180.DWG, 193805396_190.DWG, 193805396_200.DWG, 193805396_210.DWG, 193805396_220.DWG, 193805396_230.DWG, 193805396_240.DWG, 193805396_250.DWG, 193805396_260.DWG, 193805396_270.DWG, 193805396_280.DWG, 193805396_290.DWG, 193805396_300.DWG, 193805396_310.DWG, 193805396_320.DWG, 193805396_330.DWG, 193805396_340.DWG, 193805396_350.DWG, 193805396_360.DWG, 193805396_370.DWG, 193805396_380.DWG, 193805396_390.DWG, 193805396_400.DWG, 193805396_410.DWG, 193805396_420.DWG, 193805396_430.DWG, 193805396_440.DWG, 193805396_450.DWG, 193805396_460.DWG, 193805396_470.DWG, 193805396_480.DWG, 193805396_490.DWG, 193805396_500.DWG, 193805396_510.DWG, 193805396_520.DWG, 193805396_530.DWG, 193805396_540.DWG, 193805396_550.DWG, 193805396_560.DWG, 193805396_570.DWG, 193805396_580.DWG, 193805396_590.DWG, 193805396_600.DWG, 193805396_610.DWG, 193805396_620.DWG, 193805396_630.DWG, 193805396_640.DWG, 193805396_650.DWG, 193805396_660.DWG, 193805396_670.DWG, 193805396_680.DWG, 193805396_690.DWG, 193805396_700.DWG, 193805396_710.DWG, 193805396_720.DWG, 193805396_730.DWG, 193805396_740.DWG, 193805396_750.DWG, 193805396_760.DWG, 193805396_770.DWG, 193805396_780.DWG, 193805396_790.DWG, 193805396_800.DWG, 193805396_810.DWG, 193805396_820.DWG, 193805396_830.DWG, 193805396_840.DWG, 193805396_850.DWG, 193805396_860.DWG, 193805396_870.DWG, 193805396_880.DWG, 193805396_890.DWG, 193805396_900.DWG, 193805396_910.DWG, 193805396_920.DWG, 193805396_930.DWG, 193805396_940.DWG, 193805396_950.DWG, 193805396_960.DWG, 193805396_970.DWG, 193805396_980.DWG, 193805396_990.DWG, 193805396_1000.DWG

CITY OF MAPLE GROVE, MINNESOTA
NORTHWOOD CHURCH/WESTON COMMONS
STREET AND UTILITY IMPROVEMENTS - CITY PROJECT NO. 21-16
RANCHVIEW LN WATER MAIN

NO.	REVISION	DATE

SURVEY	TNA
DRAWN	JLT/ASB
DESIGNED	JLT/ASB
CHECKED	TMB
APPROVED	TJM
PROJ. NO.	193805396
SHEET NUMBER	C4.09