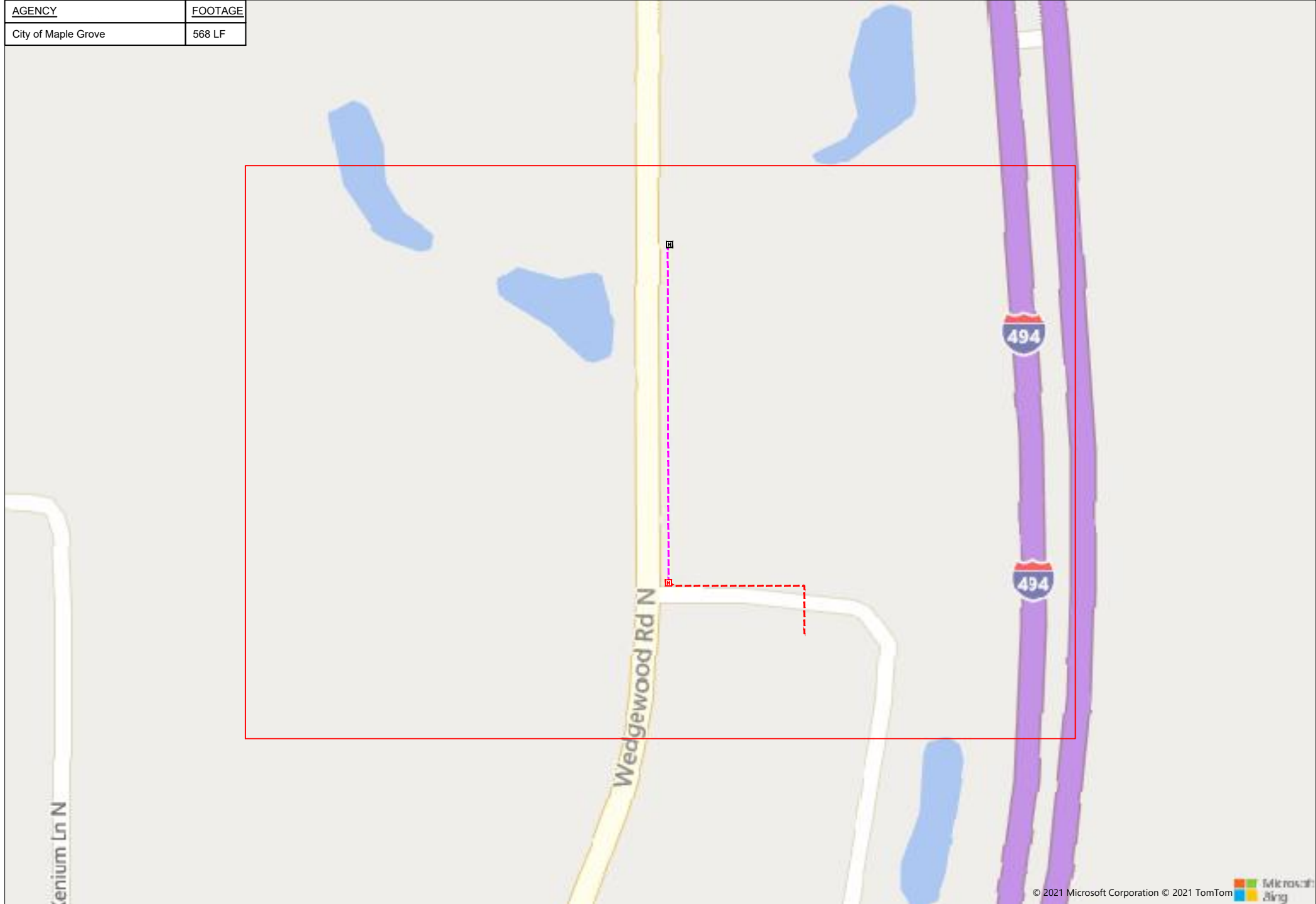


NPX Medical

AGENCY	FOOTAGE
City of Maple Grove	568 LF



6500 Wedgewood Rd N - Maple Grove, MN 55311



1" = 100'

Route	NPX Medical
City	Maple Grove
County	Hennepin
Filename	NPX Medical
Work Order #	89999



160 2nd St SW
Perham, MN 56573
(218) 346-5500

TRACKING	
Staked By:	
EW	12/21/21
Drafted By:	
MRT	12/22/21
Project Manager	
Matt Gunnarson	763-270-6177
As-Built By:	-
Revision	-

Construction Totals	
Route Footage	868'
Total Underground	868'
Total Aerial	0'
Underground (New)	306'
Aerial (New)	0'
Overpull (Ex Duct)	562'
Overlash (Ex Strand)	0'
Plow	0'
Bore	306'
New Vaults	1
New Peds	0

GSOC
GOPHER STATE ONE CALL
1-800-252-1116
www.gopherstateonecall.org

Prepared by:
 compass consultants inc.
Perham, MN 218-346-3600
TrustCompass.com

OVERVIEW

Legend

Fiber Linetypes

	Proposed Underground Fiber - Bore
	Proposed Underground Fiber - Plow
	Proposed UG Fiber in Existing Duct
	Existing Underground Fiber
	Proposed Aerial Fiber
	Proposed Aerial Overlash
	Existing Aerial Fiber
	Proposed Aerial Strand
	Existing Aerial Strand

Other Linetypes

	Rail Road
	Fence
	Retaining Wall
	Storm Sewer
	Sanitary Sewer
	Gas Line
	Tele./Comm. Line
	Water Line
	Electric Line
	Street light/Traffic signal
	District Cooling
	District Heating
	Force Main
	Other Utility or Unknown
	Utility Easement

Abbreviations

- CL - Center Line
- R/W - Right of Way
- BOC - Back of Curb
- FC - Front of Curb
- EOR - Edge of Road
- S/W - Sidewalk
- HH - Handhole
- MH - Manhole
- PRT - Preterminated Cable
- PRG - Pigtail Cable

Symbols

	Proposed Handhole
	Existing Handhole
	Reference Handhole
	Manhole
	Proposed Cabinet
	Existing Cabinet
	Bore Pit
	Proposed Splice Point
	Existing Splice Point
	Power Pole
	Proposed Slack Coil
	Existing Slack Coil
	Proposed Anchor/Down Guy
	Existing Anchor/Down Guy
	Proposed Riser
	Existing Riser
	Aerial Bond
	Aerial Ground
	BM53T - Fiber Marker
	BM53 - Fiber Marker
	Proposed PED
	Existing PED
	Proposed Splice Case
	Existing Splice Case
	Street Light
	Traffic Light
	Transformer
	Hydrant
	Catch Basin
	Tree

Materials	
48 Fiber	1093
1.25" Duct	306
Vault (24x30)	1
Ground Rod	1



1" = -

Route	NPX Medical
City	Maple Grove
County	Hennepin
Filename	NPX Medical
Work Order #	89999

160 2nd St SW
Perham, MN 56573
(218) 346-5500

TRACKING	
Staked By:	EW 12/21/21
Drafted By:	MRT 12/22/21
Project Manager	Matt Gunnarson 763-270-6177
As-Built By:	-
Revision	-

Construction Totals	
Route Footage	868'
Total Underground	868'
Total Aerial	0'
Underground (New)	306'
Aerial (New)	0'
Overpull (Ex Duct)	562'
Overlash (Ex Strand)	0'
Plow	0'
Bore	306'
New Vaults	1
New Peds	0

GSOC
GOPHER STATE ONE CALL
1-800-252-1116
www.gopherstateonecall.org

Prepared by:

Perham, MN 218-346-3600
TrustCompass.com

LEGEND

Existing Access Points



EX-Arvig 50080-03



EX-Arvig 50080-03



1" = -

Route	NPX Medical
City	Maple Grove
County	Hennepin
Filename	NPX Medical
Work Order #	89999



160 2nd St SW
Perham, MN 56573
(218) 346-5500

TRACKING

Staked By:	EW	12/21/21
Drafted By:	MRT	12/22/21
Project Manager	Matt Gunnarson	763-270-6177
As-Built By:	-	-
Revision	-	-

GSOC

GOPHER STATE ONE CALL
1-800-252-1116
www.gopherstateonecall.org

Prepared by:



EXISTING AP



1" = 100'

Route
NPX Medical

City
Maple Grove

County
Hennepin

Filename
NPX Medical

Work Order #
89999



160 2nd St SW
Perham, MN 56573
(218) 346-5500

TRACKING

Staked By:
EW 12/21/21

Drafted By:
MRT 12/22/21

Project Manager
Matt Gunnarson 763-270-6177

As-Built By:
- -

Revision
- - -

GSOC

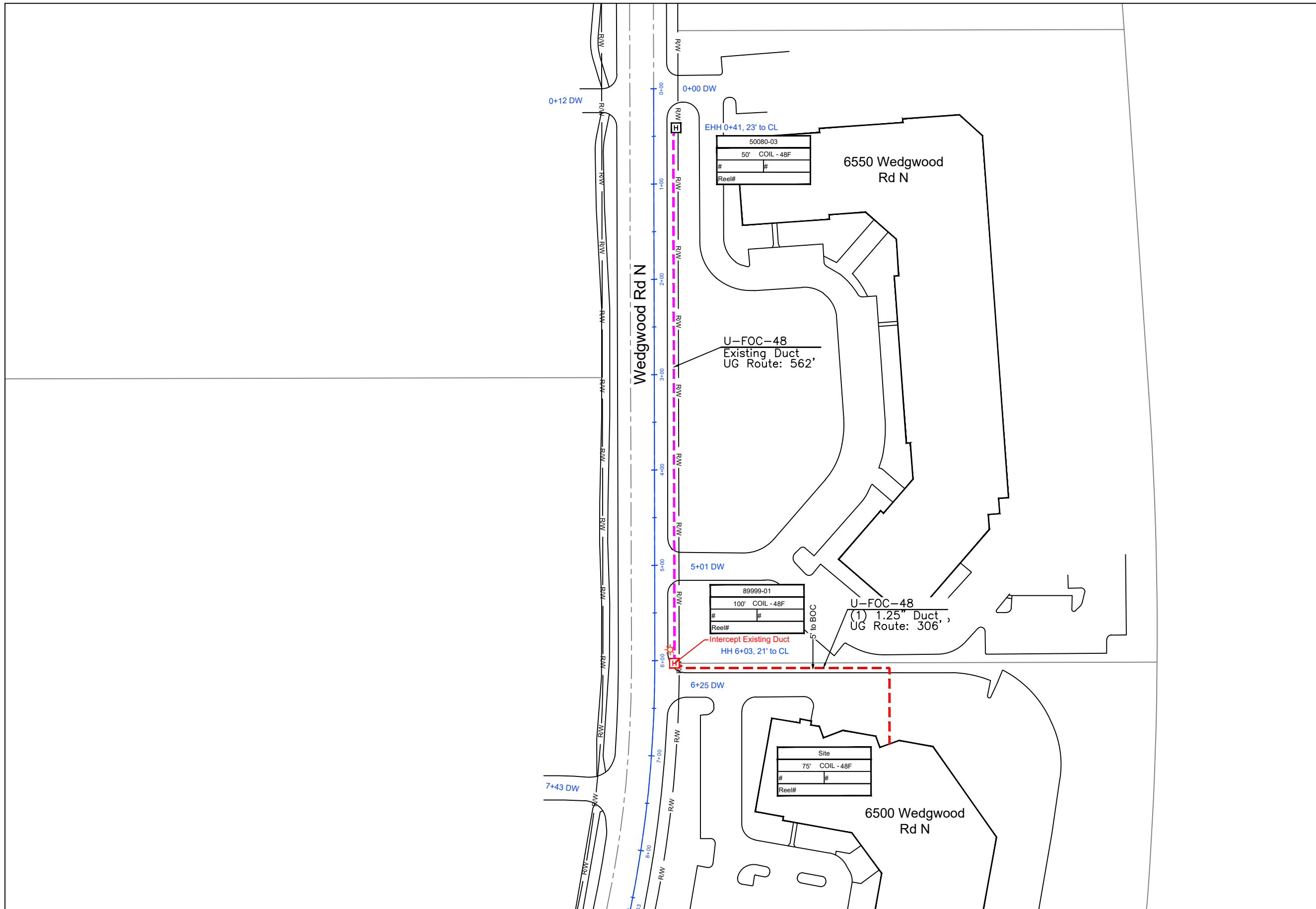
GOPHER STATE ONE CALL
1-800-252-1116
www.gopherstateonecall.org

Prepared by:



Perham, MN 218-346-3600
TrustCompass.com

89999-01



50080-03	
50' COIL - 48F	
#	#
Reel#	

89999-01	
100' COIL - 48F	
#	#
Reel#	

Site	
75' COIL - 48F	
#	#
Reel#	