



CONTRACTOR NAME: Centerpoint Energy
 CONTRACTOR JOB #: 100513720 Q3 #: 2858199
 PREPARED BY: Joel Truckenbrod, T.C.S. # 3365
 DATE PREPARED: 12/13/21 DATE REVISED: -



ORDERED BY: Proline Solutions REVISED BY: -

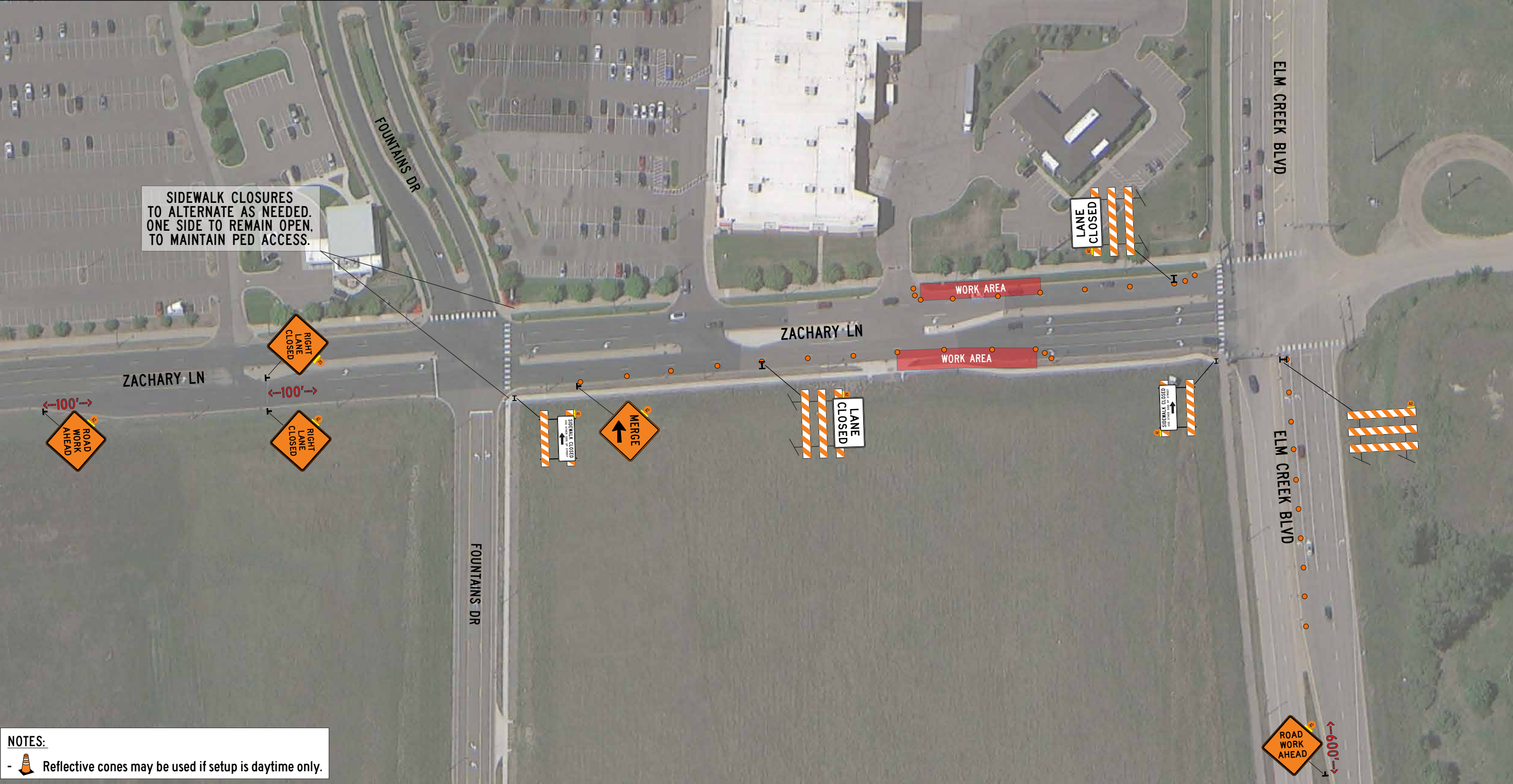
CITY: Maple Grove, MN STREET/LOCATION: Zachary Ln & Elm Creek Blvd

PROJECT NAME: ARBOR LAKES BUSINESS PARK STAGE/PHASE#: -

● - REFLECTIVE DRUM * - TYPE A CHANNELIZER ◻ - REFLECTIVE CONES

DISCLAIMER: This is a proposed traffic control layout. It has not been created or approved by a Professional Engineer and must be approved by the Road Authority prior to setup.

SIDEWALK CLOSURES TO ALTERNATE AS NEEDED. ONE SIDE TO REMAIN OPEN. TO MAINTAIN PED ACCESS.



NOTES:
 - Reflective cones may be used if setup is daytime only.