

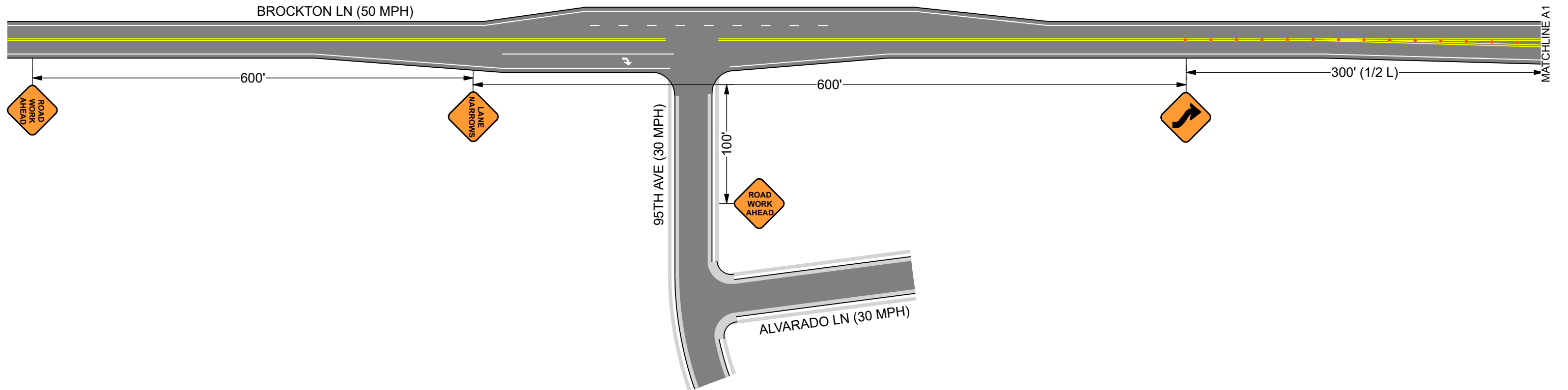


UG - PHASE 1 - PAGE 1 OF 4

	Date: 11/24/2021 Author: UTC Project: Brockton Ln N & 101st Ave N - Lane Shift
	Comments: NOT TO SCALE
	All Plan Details According to Minnesota MUTCD
	Cones for All Tapers and Tangents ●●● 
	All Signs 36" Class, or Greater, Installed Temporary Sign Stands
Allow Access to Affected Driveways and Business Entrances	
Flaggers To Use Two-Way Handheld Radios	

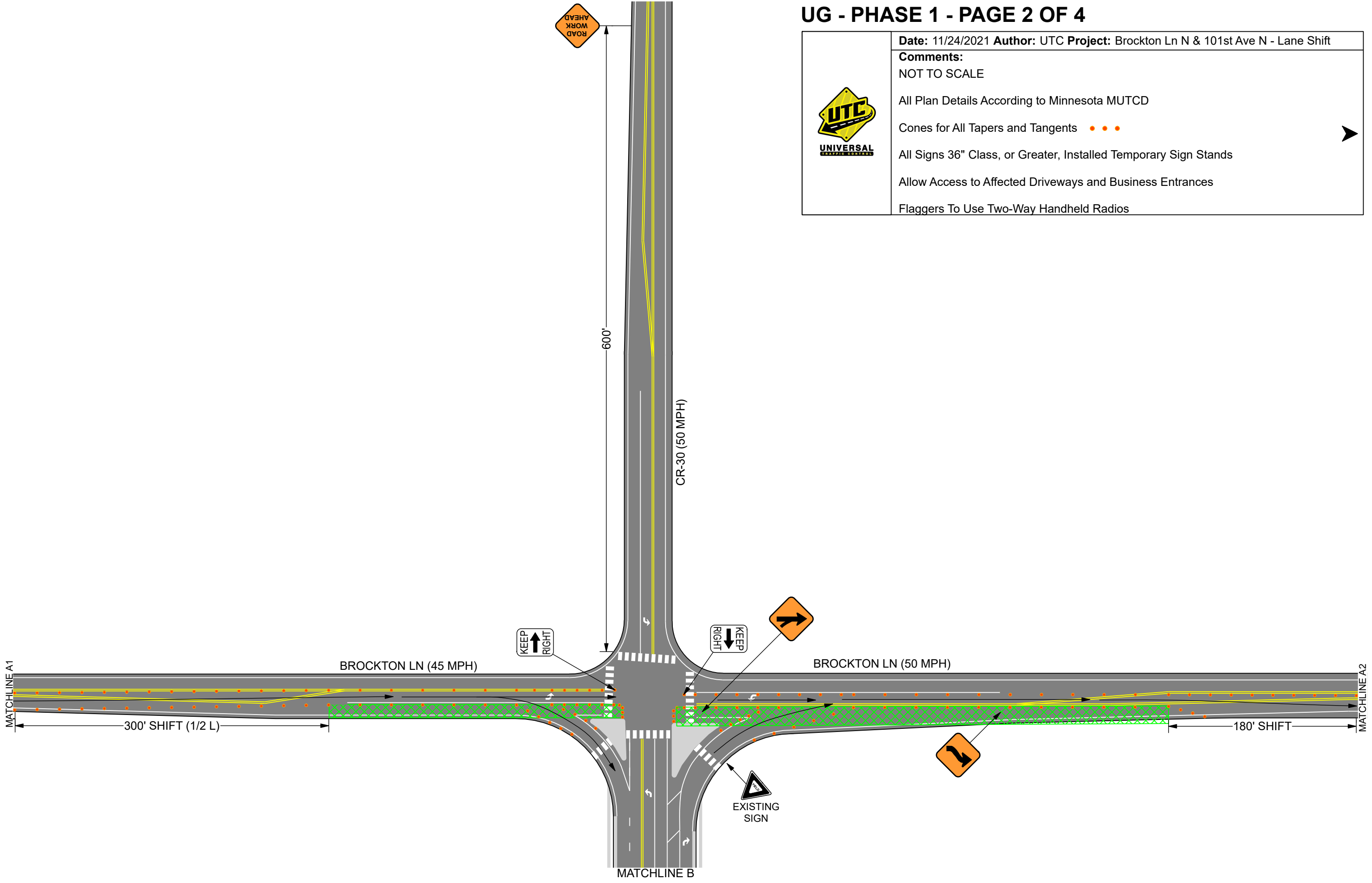


UG - PHASE 1 - PAGE 2 OF 4



Date: 11/24/2021 Author: UTC Project: Brockton Ln N & 101st Ave N - Lane Shift

- Comments:**
 NOT TO SCALE
 All Plan Details According to Minnesota MUTCD
 Cones for All Tapers and Tangents ●●●
 All Signs 36" Class, or Greater, Installed Temporary Sign Stands
 Allow Access to Affected Driveways and Business Entrances
 Flaggers To Use Two-Way Handheld Radios



UG - PHASE 1 - PAGE 3 OF 4



Date: 11/24/2021 Author: UTC Project: Brockton Ln N & 101st Ave N - Lane Shift

Comments:

NOT TO SCALE

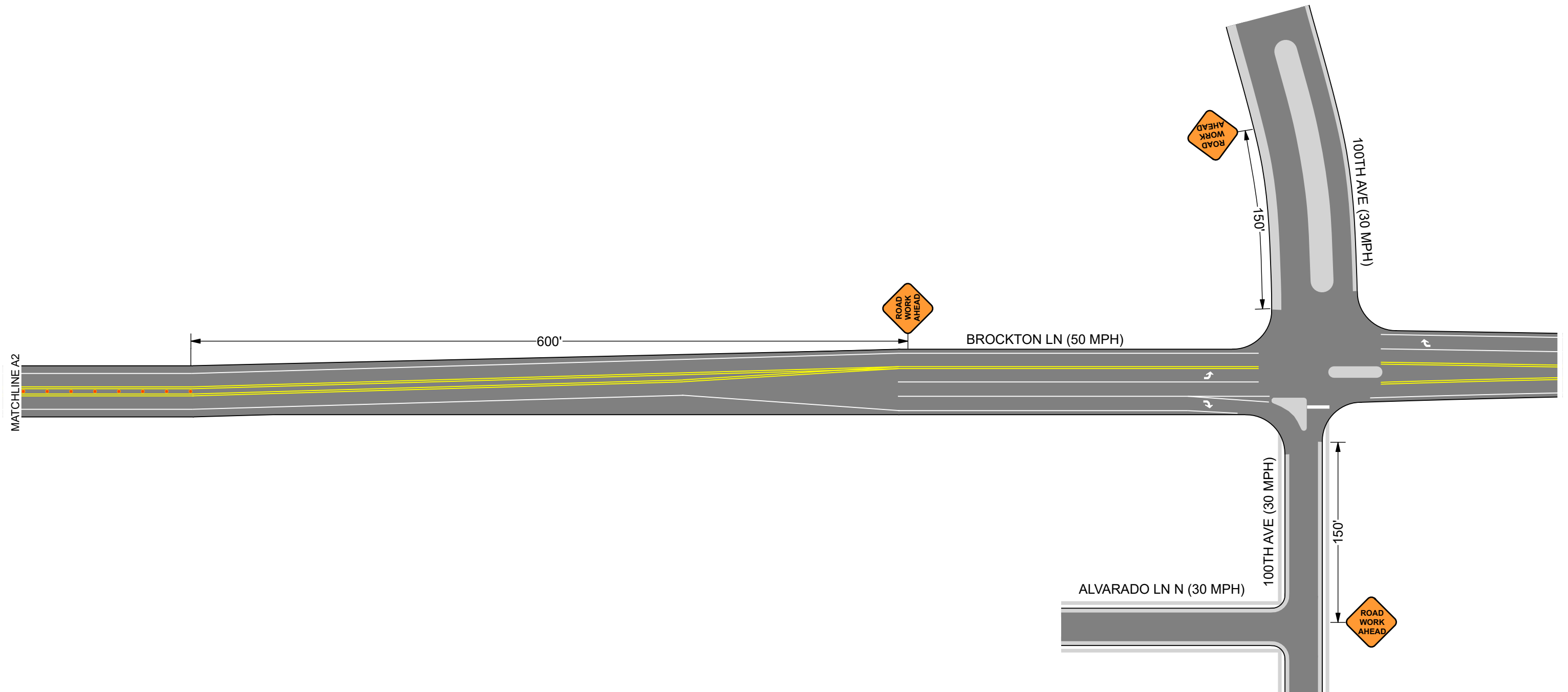
All Plan Details According to Minnesota MUTCD

Cones for All Tapers and Tangents ●●●

All Signs 36" Class, or Greater, Installed Temporary Sign Stands

Allow Access to Affected Driveways and Business Entrances

Flaggers To Use Two-Way Handheld Radios



UG - PHASE 1 - PAGE 4 OF 4

Date: 11/24/2021 Author: UTC Project: Brockton Ln N & 101st Ave N - Lane Shift

Comments:

NOT TO SCALE

All Plan Details According to Minnesota MUTCD

Cones for All Tapers and Tangents ● ● ●

All Signs 36" Class, or Greater, Installed Temporary Sign Stands

Allow Access to Affected Driveways and Business Entrances

Flaggers To Use Two-Way Handheld Radios

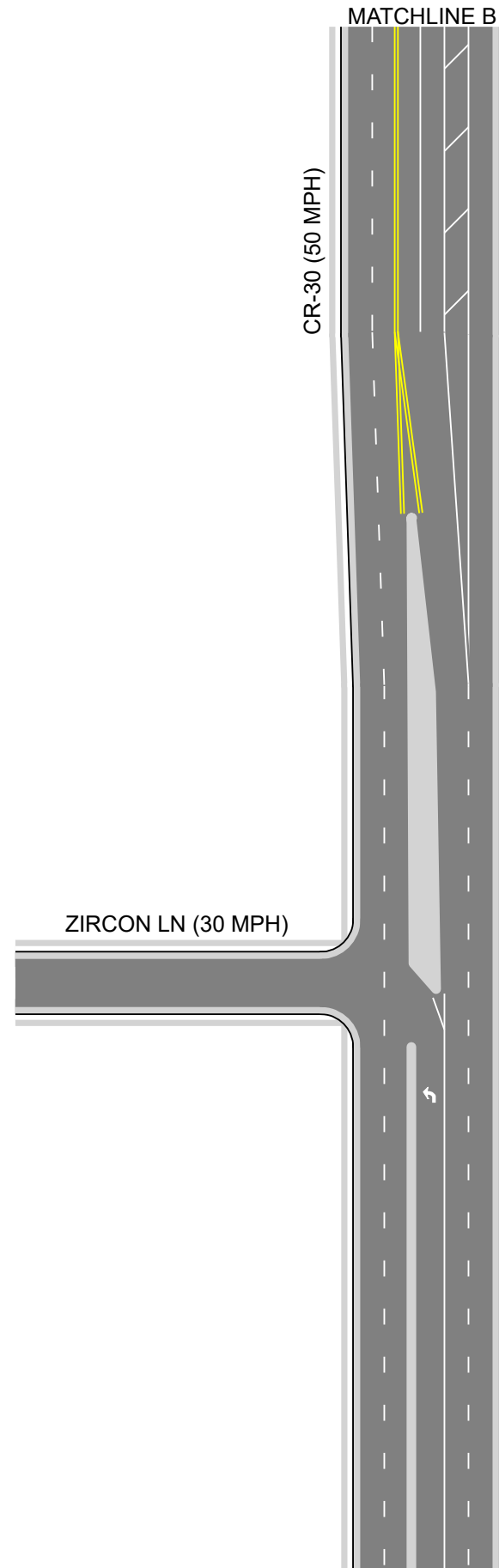
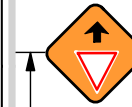


MATCHLINE B


CR-30 (50 MPH)

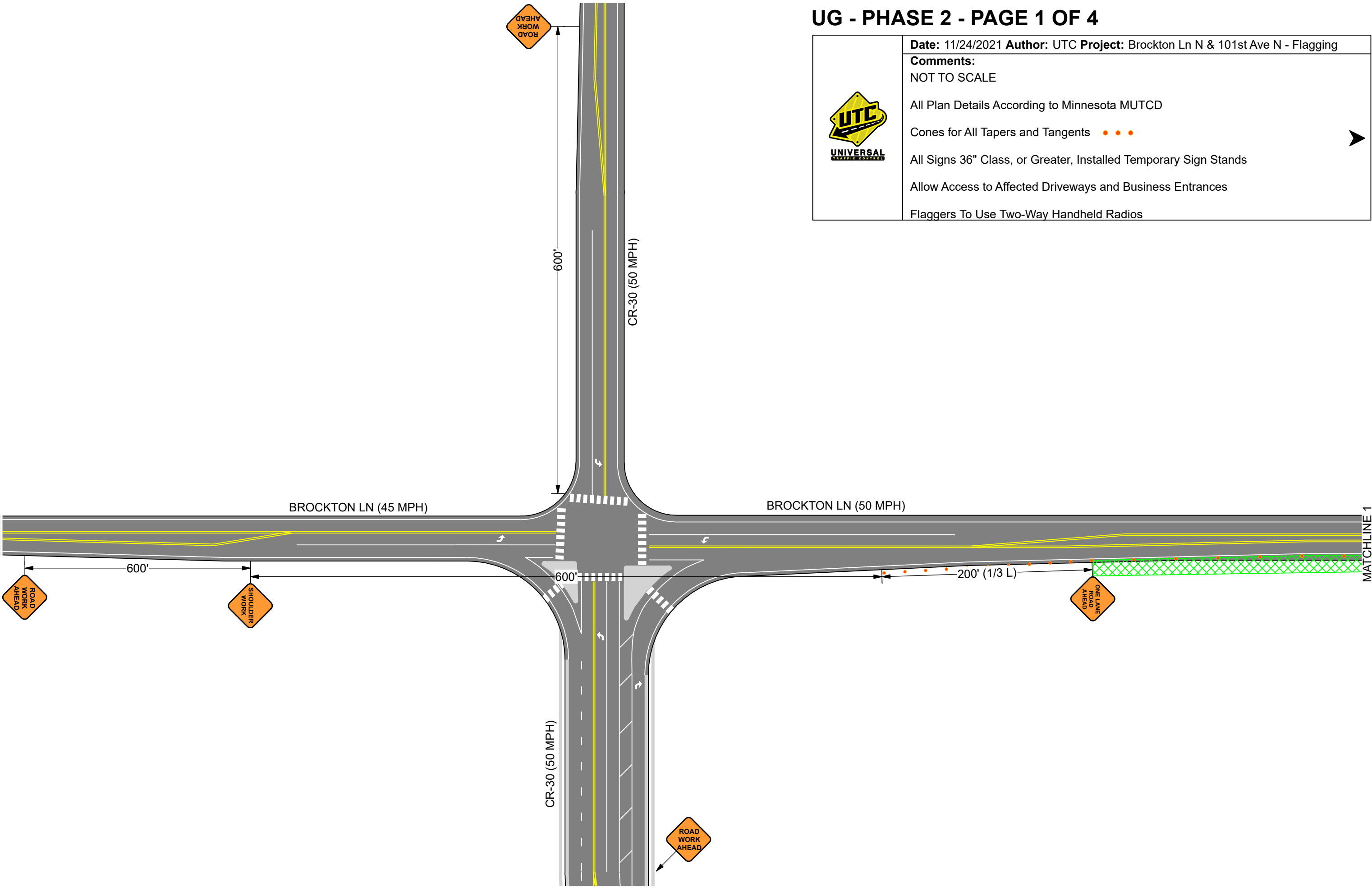
ZIRCON LN (30 MPH)

600'





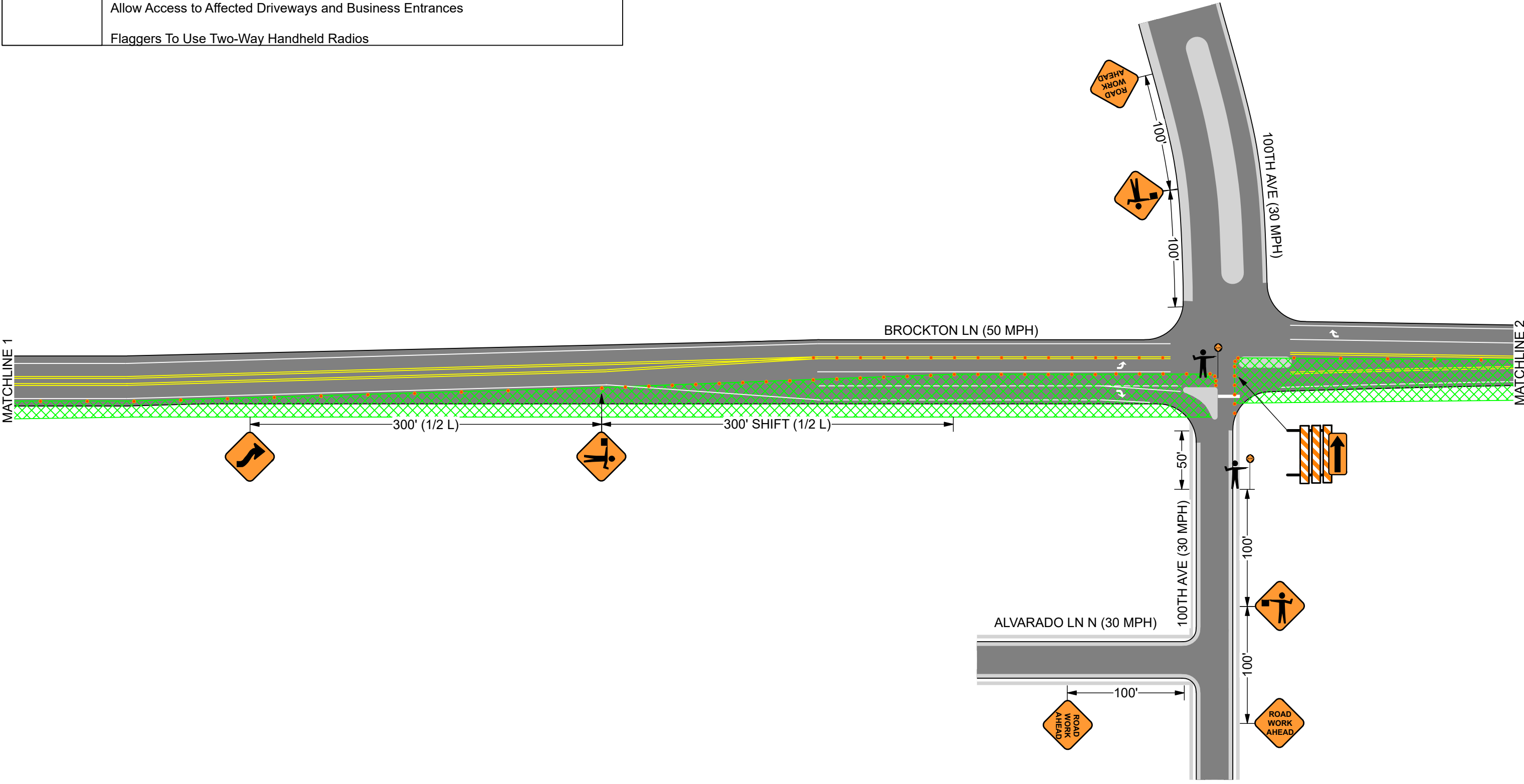
UG - PHASE 2 - PAGE 1 OF 4

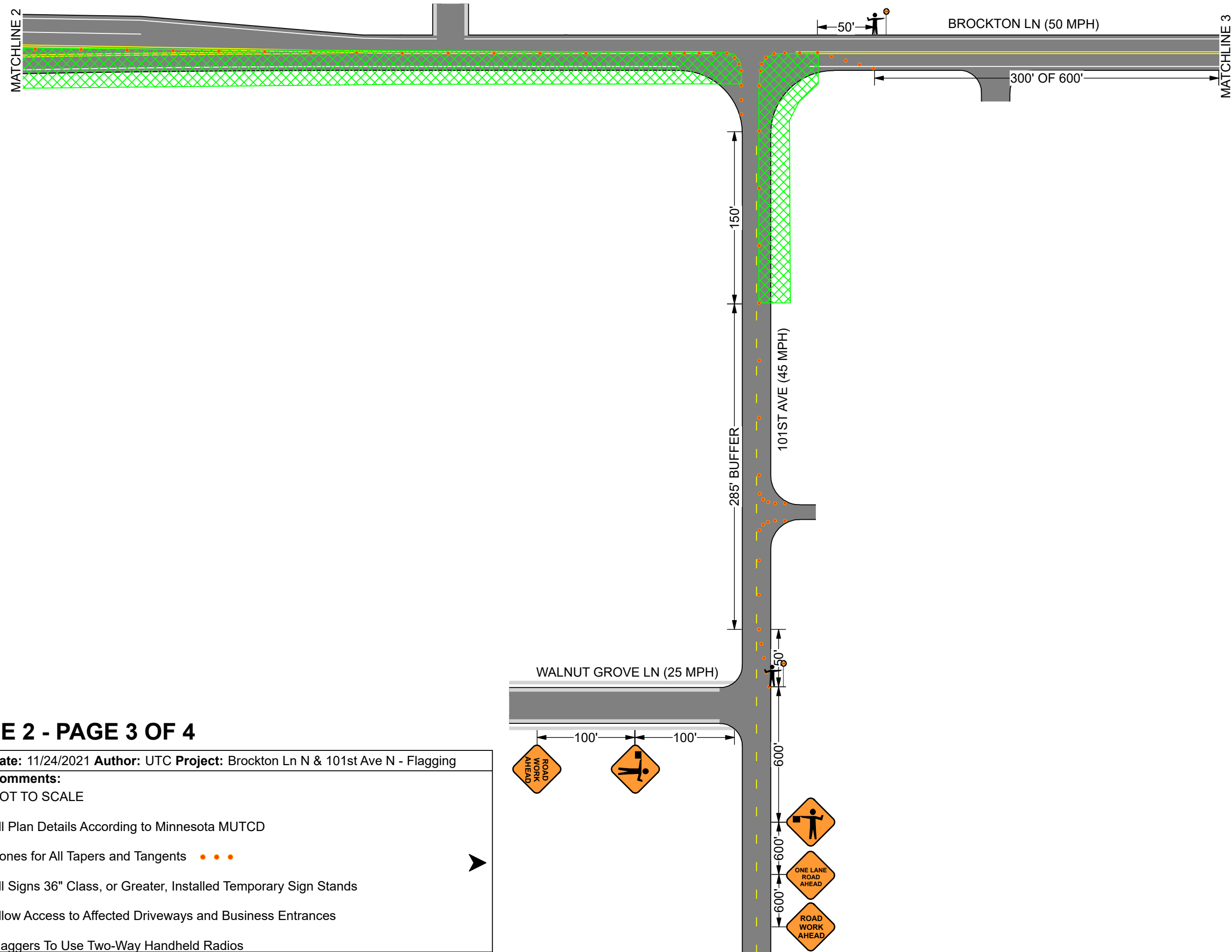
	Date: 11/24/2021 Author: UTC Project: Brockton Ln N & 101st Ave N - Flagging
	Comments: NOT TO SCALE
	All Plan Details According to Minnesota MUTCD
	Cones for All Tapers and Tangents ●●●
	All Signs 36" Class, or Greater, Installed Temporary Sign Stands
Allow Access to Affected Driveways and Business Entrances	
Flaggers To Use Two-Way Handheld Radios	




UG - PHASE 2 - PAGE 2 OF 4

	Date: 11/24/2021 Author: UTC Project: Brockton Ln N & 101st Ave N - Flagging
	Comments: NOT TO SCALE
	All Plan Details According to Minnesota MUTCD
	Cones for All Tapers and Tangents ● ● ● 
	All Signs 36" Class, or Greater, Installed Temporary Sign Stands
	Allow Access to Affected Driveways and Business Entrances
Flaggers To Use Two-Way Handheld Radios	




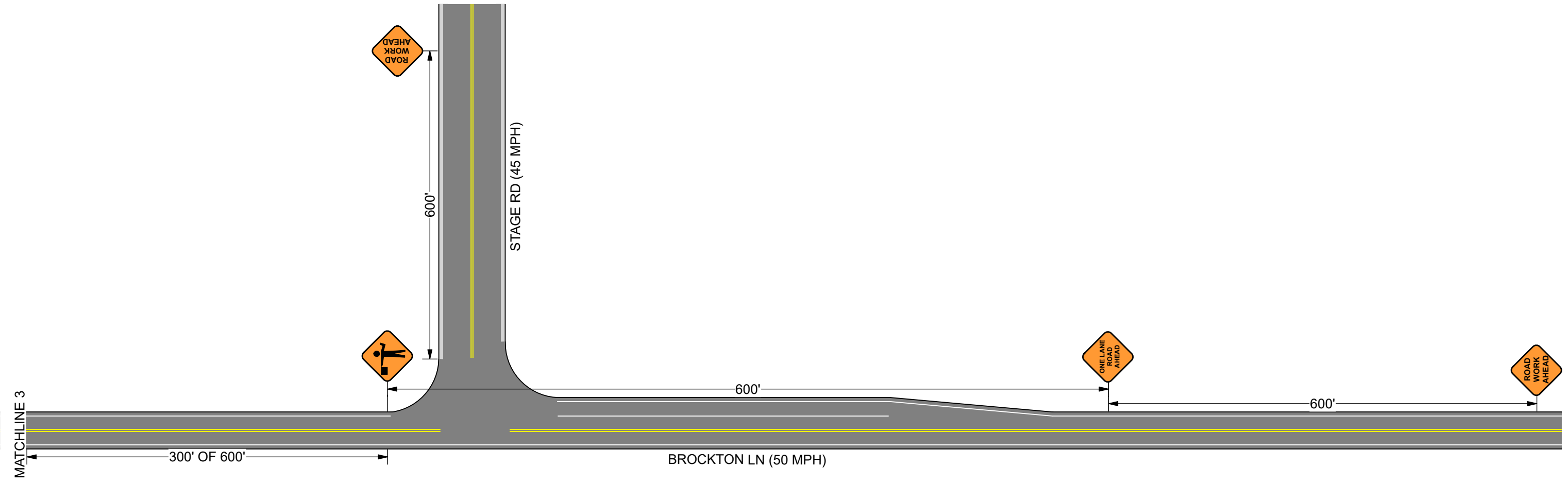


UG - PHASE 2 - PAGE 3 OF 4


	Date: 11/24/2021 Author: UTC Project: Brockton Ln N & 101st Ave N - Flagging
	Comments: NOT TO SCALE
	All Plan Details According to Minnesota MUTCD
	Cones for All Tapers and Tangents ●●●
	All Signs 36" Class, or Greater, Installed Temporary Sign Stands
	Allow Access to Affected Driveways and Business Entrances
Flaggers To Use Two-Way Handheld Radios	

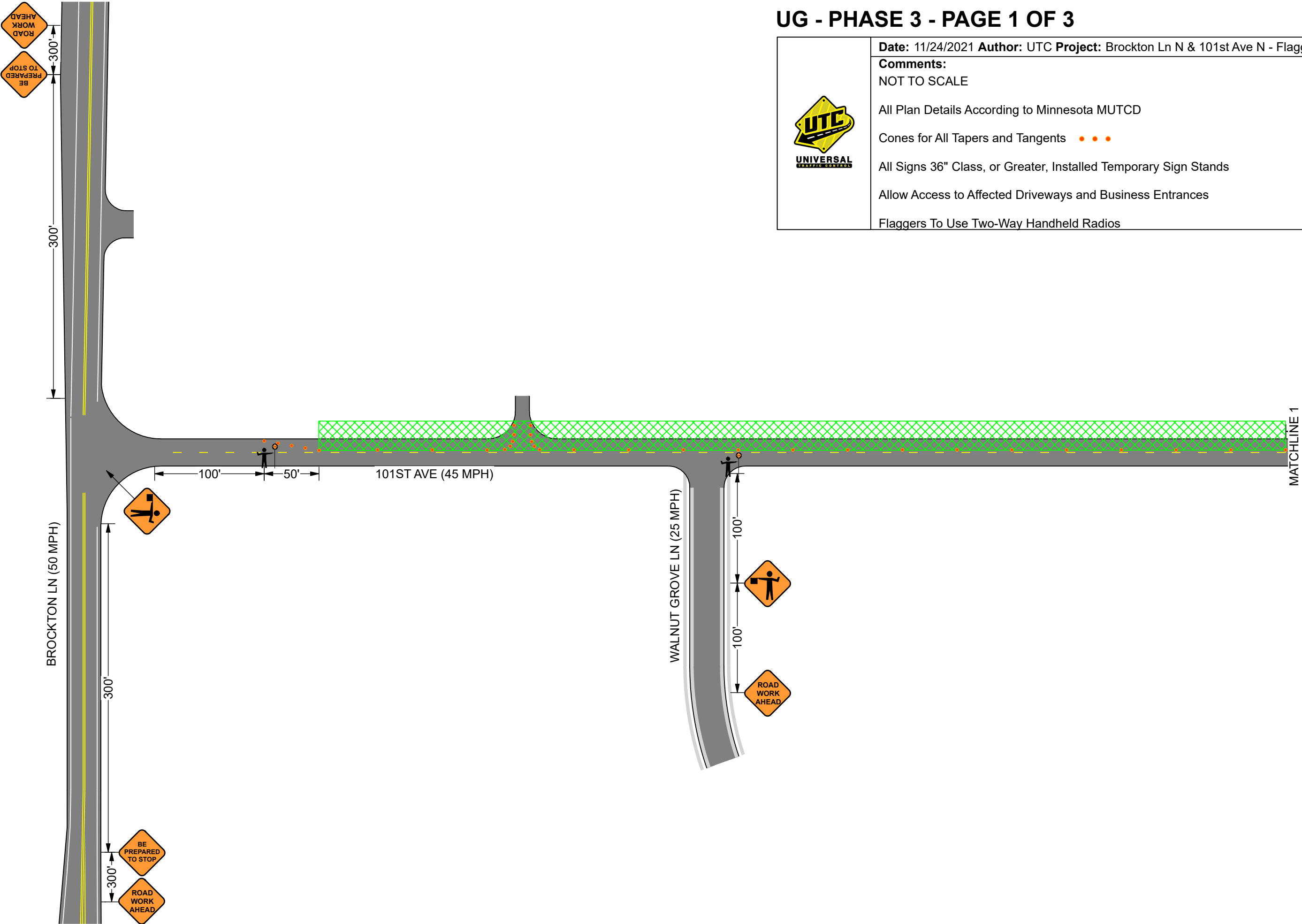
UG - PHASE 2 - PAGE 4 OF 4

	Date: 11/24/2021 Author: UTC Project: Brockton Ln N & 101st Ave N - Flagging
	Comments: NOT TO SCALE
	All Plan Details According to Minnesota MUTCD
	Cones for All Tapers and Tangents ● ● ●
	All Signs 36" Class, or Greater, Installed Temporary Sign Stands
	Allow Access to Affected Driveways and Business Entrances
Flaggers To Use Two-Way Handheld Radios	




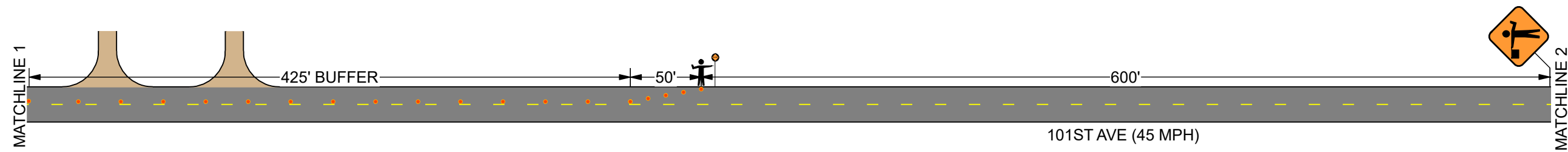
UG - PHASE 3 - PAGE 1 OF 3

	Date: 11/24/2021 Author: UTC Project: Brockton Ln N & 101st Ave N - Flagging
	Comments: NOT TO SCALE
	All Plan Details According to Minnesota MUTCD
	Cones for All Tapers and Tangents ●●●
	All Signs 36" Class, or Greater, Installed Temporary Sign Stands
Allow Access to Affected Driveways and Business Entrances	
Flaggers To Use Two-Way Handheld Radios	




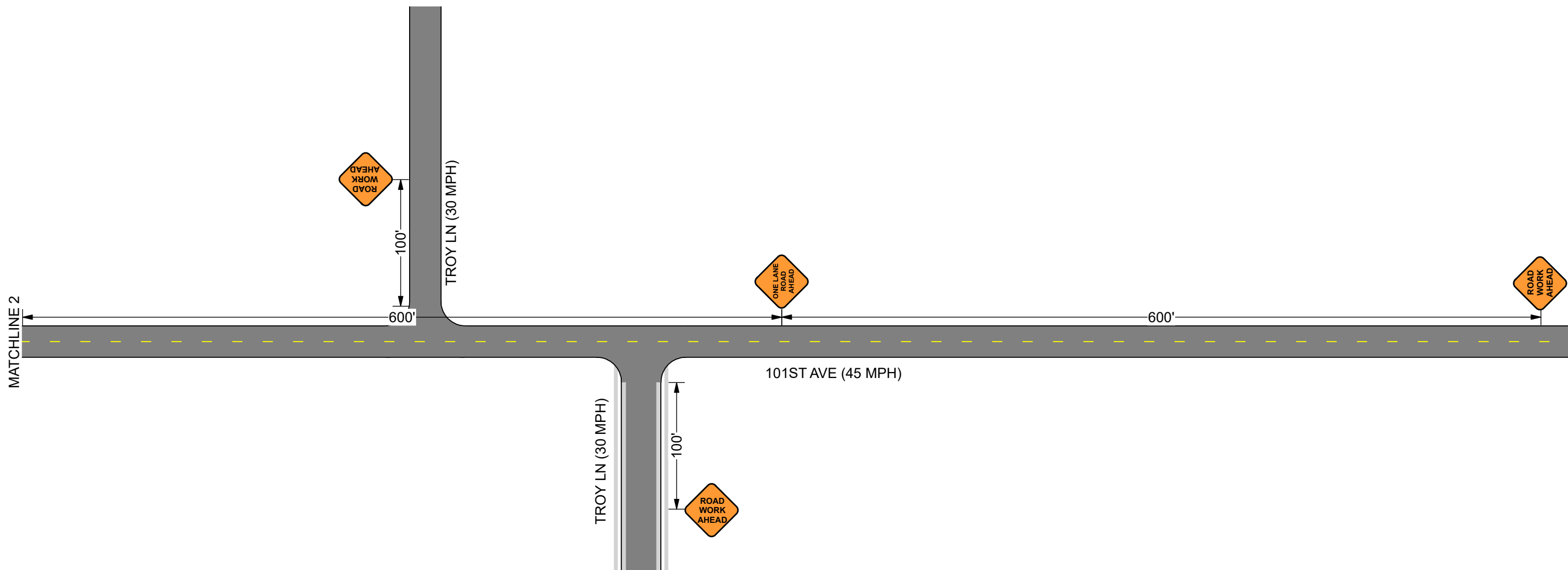
UG - PHASE 3 - PAGE 2 OF 3

	Date: 11/24/2021 Author: UTC Project: Brockton Ln N & 101st Ave N - Flagging
	Comments: NOT TO SCALE All Plan Details According to Minnesota MUTCD Cones for All Tapers and Tangents ●●● All Signs 36" Class, or Greater, Installed Temporary Sign Stands Allow Access to Affected Driveways and Business Entrances Flaggers To Use Two-Way Handheld Radios




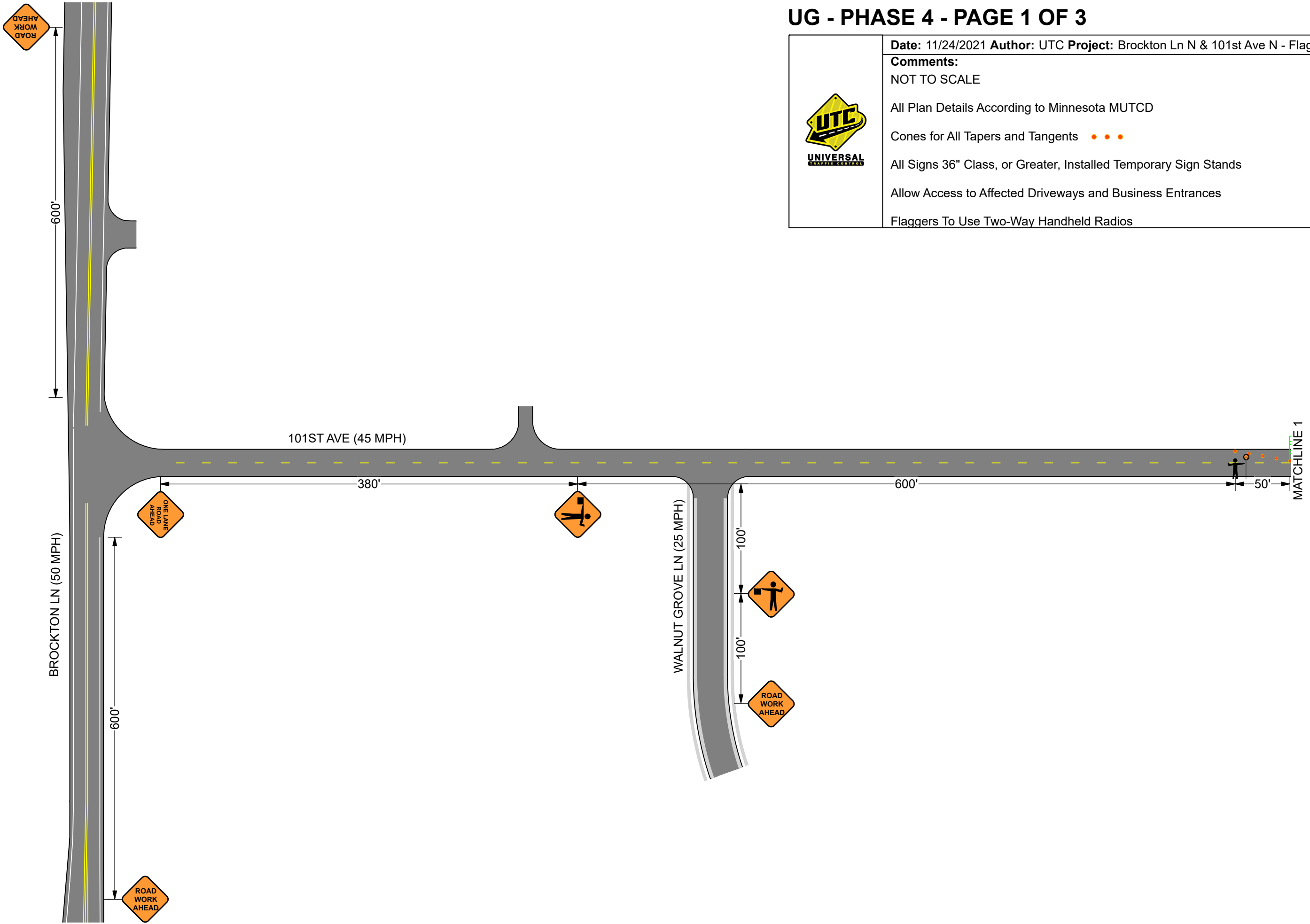
UG - PHASE 3 - PAGE 3 OF 3

	Date: 11/24/2021 Author: UTC Project: Brockton Ln N & 101st Ave N - Flagging
	Comments: NOT TO SCALE All Plan Details According to Minnesota MUTCD Cones for All Tapers and Tangents ●●● All Signs 36" Class, or Greater, Installed Temporary Sign Stands Allow Access to Affected Driveways and Business Entrances Flaggers To Use Two-Way Handheld Radios




UG - PHASE 4 - PAGE 1 OF 3

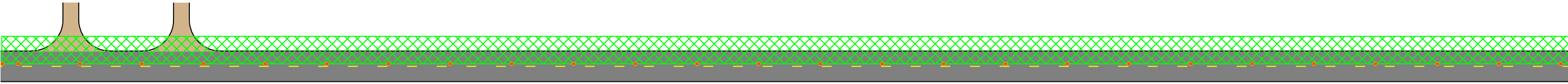
	<p>Date: 11/24/2021 Author: UTC Project: Brockton Ln N & 101st Ave N - Flagging</p>
	<p>Comments: NOT TO SCALE All Plan Details According to Minnesota MUTCD Cones for All Tapers and Tangents ●●● All Signs 36" Class, or Greater, Installed Temporary Sign Stands Allow Access to Affected Driveways and Business Entrances Flaggers To Use Two-Way Handheld Radios</p>



UG - PHASE 4 - PAGE 2 OF 3

	Date: 11/24/2021 Author: UTC Project: Brockton Ln N & 101st Ave N - Flagging
	Comments: NOT TO SCALE All Plan Details According to Minnesota MUTCD Cones for All Tapers and Tangents ●●● All Signs 36" Class, or Greater, Installed Temporary Sign Stands Allow Access to Affected Driveways and Business Entrances Flaggers To Use Two-Way Handheld Radios


MATCHLINE 1



101ST AVE (45 MPH)

MATCHLINE 2

UG - PHASE 4 - PAGE 3 OF 3

	Date: 11/24/2021 Author: UTC Project: Brockton Ln N & 101st Ave N - Flagging
	Comments: NOT TO SCALE
	All Plan Details According to Minnesota MUTCD
	Cones for All Tapers and Tangents ●●●
	All Signs 36" Class, or Greater, Installed Temporary Sign Stands
Allow Access to Affected Driveways and Business Entrances	
Flaggers To Use Two-Way Handheld Radios	

