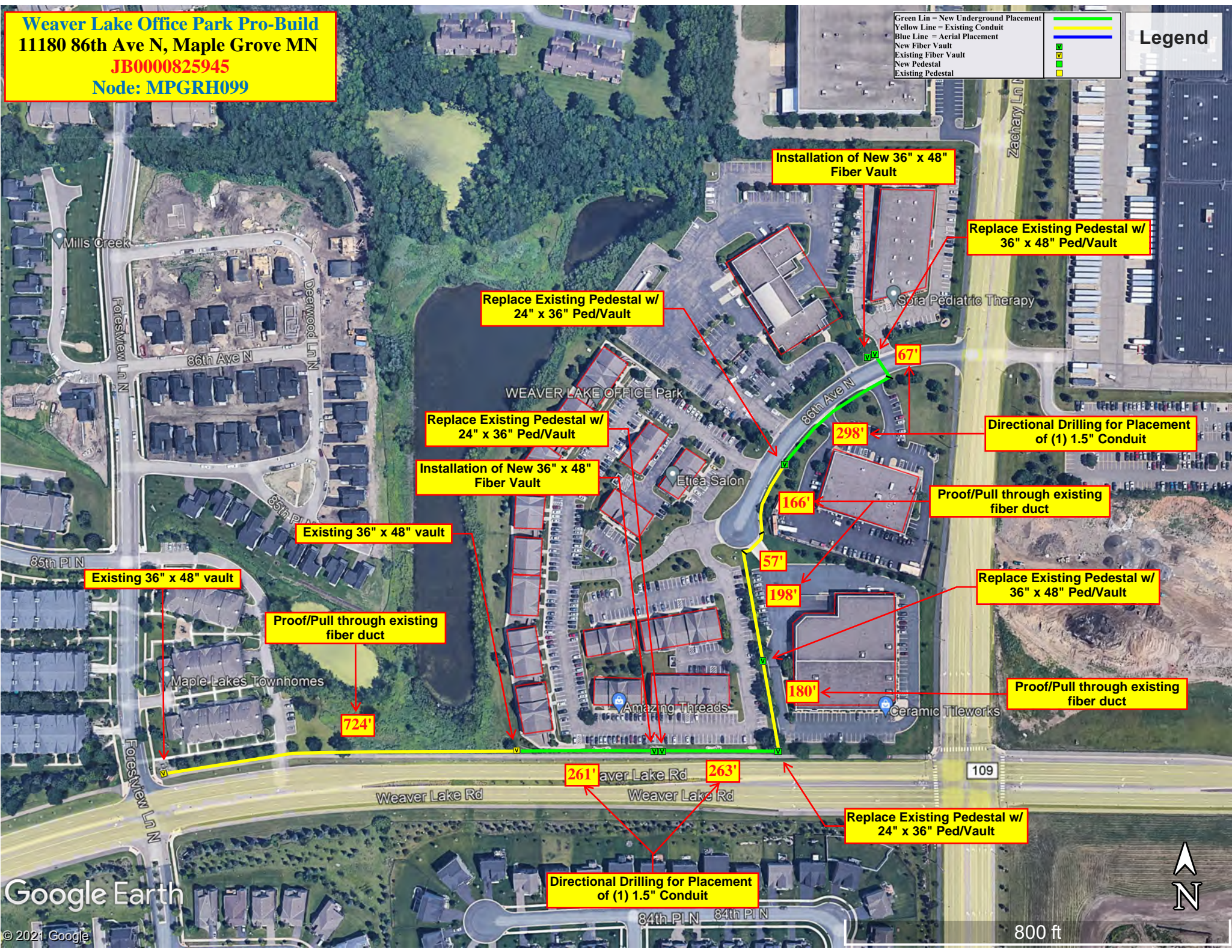


**Weaver Lake Office Park Pro-Build**  
**11180 86th Ave N, Maple Grove MN**  
**JB0000825945**  
**Node: MPGRH099**

Green Lin = New Underground Placement  
 Yellow Line = Existing Conduit  
 Blue Line = Aerial Placement  
 New Fiber Vault  
 Existing Fiber Vault  
 New Pedestal  
 Existing Pedestal



Google Earth

© 2021 Google



800 ft