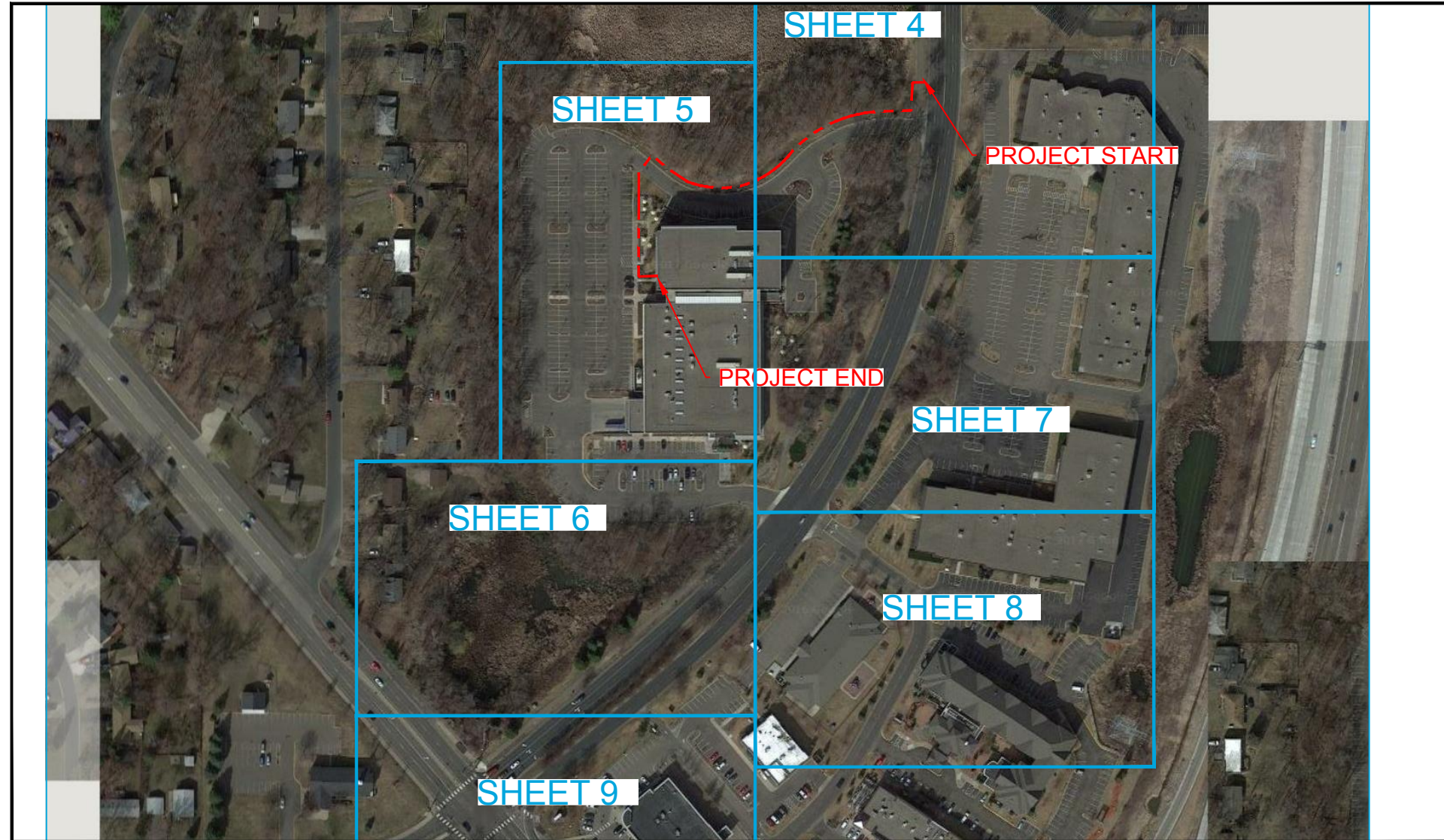


ADDRESS: 13490 BASS LAKE RD, MAPLE GROVE, MN
 PROJECT NAME: OSP DIVERSE ENTRY-DATA RECOGNITION CORP.



SITE LOCATION

CONTACTS

CONTACT INFO: JOHN WIEBE
 PHONE: 763-268-2384 / 651-587-8424

SITE INDEX

- 1 - COVER SHEET/SITE LOCATION
- 2 - LEGEND
- 3 - GENERAL NOTES
- 4-9 - PROJECT SHEET
- 10 - TYPICALS
- 11 - DETAILS

SCOPE OF WORK:

CONTRACTOR WILL MEET WITH THE OSPE TO GO OVER THE DETAILS OF THE PROJECT PRIOR TO STARTING THE PROJECT. THE CONTRACTOR WILL MAKE A SET OF DRAWINGS TO ENSURE BOTH THE OSPE AND THE CONTRACTOR HAS A CLEAR UNDERSTANDING AS TO WHAT IS EXPECTED OF THE CONTRACTOR TO COMPLETE. CONTRACTOR WILL NOTIFY OSPE PRIOR TO ANY CHANGES, REQUESTS FROM PROPERTY MANAGEMENT AND ALL UNINTENTIONAL INCIDENTALS.

SCOPE OF WORK:

THIS PROJECT WILL PROVIDE A 24CT NON ARMORED FIBER TO CONNECTING TO 13490 BASS LAKE RD .
 START FROM EXISTING LEVEL 3 H.H. AT WEDGWOOD RD. N. BORE 3 -1.25" CONDUIT WITH 24CT NON ARMORED FIBER GOING WEST ROUTE ALONG NORTH SIDE OF DRIVEWAY THEN TURN SOUTH THRU PARKING LOT TO THE BUILDING. THEN ENTER THE BUILDING AT BOILER ROOM DOOR.
 THE TOTAL BUILD FOR THE OSP PROJECT IS 764'.

SYMBOL CORRESPONDS TO PHOTO LOCATIONS AND ORIENTATION. SEE SHEET # FOR SITE PHOTOGRAPHS.

3				AS-BUILT
2				REVISION # 1
1	01-14-17	ML	TVP	ORIGINAL
NO.	DATE	ENG DESIGN	DRAFTING	COMMENT



LEVEL 3 ENGINEER: MIKE WOOLHOUSE 952-351-2353
 ENGINEERING FIRM: TLR Consulting MIKE LAUGHLIN 320-963-2836
 PROJECT NUMBER: N313283
 LOCATION: ON NET BUILD TO 13490 BASS LAKE RD FOR DIVERSE ENTRY.
 DRAWING NAME: 13490 BASS LAKE RD.dwg

LEGEND

LINETYPES

	UG FIBER - EXISTING
	UG FIBER - PROPOSED
	AERIAL FIBER - EXISTING
	AERIAL FIBER - PROPOSED
	STRAND - EXISTING
	STRAND - PROPOSED
	CONDUIT - EXISTING
	CONDUIT - PROPOSED
	INNERDUCT - EXISTING
	INNERDUCT - PROPOSED
	GAS
	WATER
	TELEPHONE
	ELECTRIC
	SANITARY SEWER (SEW)
	STORM DRAIN
	FENCE
	CABLE TV
	STEAM
	OIL
	UNKNOWN UTILITY
	RIGHT OF WAY
	EDGE OF PAVEMENT
	OVER HEAD ELECTRIC
	RAILROAD
	EASEMENT BOUNDARY/PROPERTY LINE

SYMBOL DESCRIPTION

ASW	ASPHALT SIDEWALK
BIP	BLACK IRON PIPE
BSP	BLACK STEEL PIPE
CSW	CONCRETE SIDEWALK
EOP	EDGE OF PAVEMENT
EOTW	EDGE OF TRAVEL WAY
FOC	FACE OF CURB
HDPE	HIGH DENSITY POLYETHYLENE
HH	HANDHOLE
JB	JUNCTION BOX
MH	MANHOLE
MP	MILE POST
O/S	OFFSET
PVC	POLY VINYL CHLORIDE
RGS	RIGID GALVANIZED STEEL CONDUIT
ROW	RIGHT OF WAY
STA.	STATION

	RISER
	TELEPHONE
	CABLE TV PEDESTAL
	TRAFFIC CONTROL CABINET
	EXISTING H.H- OTHERS
	POWER VAULT
	CATCH BASIN/INLET
	FIRE HYDRANT
	GROUND/BOND
	STREET LIGHT
	TREE
	CULVERT
	WING WALL
	BRIDGE
	MISC. UTILITY
	UTILITY POLE - EXISTING
	POLE - PROPOSED

	HANDHOLE - EXISTING
	HANDHOLE - PROPOSED
	MANHOLE - EXISTING
	MANHOLE - PROPOSED
	PULLBOX - EXISTING
	PULBOX - PROPOSED

	VAULT - EXISTING
--	------------------

	VAULT - PROPOSED
--	------------------

	AERIAL STORAGE - EXISTING
--	---------------------------

	AERIAL STORAGE - PROPOSED
--	---------------------------

	VAULT/BUILDING STORAGE - EXISTING
--	-----------------------------------

	VAULT/BUILDING STORAGE - PROPOSED
--	-----------------------------------

	POLE ANCHOR/DOWN GUY - EXISTING
--	---------------------------------

	POLE ANCHOR/DOWN GUY - PROPOSED
--	---------------------------------

	PROPOSED DOWN GUY ON EXISTING ANCHOR
--	--------------------------------------

	TERMINATION - EXISTING
--	------------------------

	TERMINATION - PROPOSED
--	------------------------

	BUILDING CALLOUT - PROPOSED
--	-----------------------------

	SPLICE POINT - EXISTING
--	-------------------------

	SPLICE POINT - PROPOSED
--	-------------------------

	SEQUENTIAL CALLOUT
--	--------------------

	SEQUENTIAL IN TAIL CALLOUT
--	----------------------------

	SEQUENTIAL TAIL OUT CALLOUT
--	-----------------------------

POLE NO	N/A
UTILITY1	0'-0"

POLE ATTACHMENT CALLOUT - EXISTING
USE DYNAMIC PULL DOWN TO SELECT FROM 1 TO 6 ATTACHMENTS

POLE NO	N/A
UTILITY1	0'-0"

POLE ATTACHMENT CALLOUT - PROPOSED
USE DYNAMIC PULL DOWN TO SELECT FROM 1 TO 6 ATTACHMENTS

1	CABLE FIBERS: FIBERS CABLE OWNER: LEVEL3 CABLE LENGTH: LENGTH NOTES:
---	---

CABLE SPAN CALLOUT - EXISTING
FOR USE ON PAPER SPACE (SHOWN AT 50X)

1	CABLE FIBERS: FIBERS CABLE OWNER: LEVEL3 CABLE LENGTH: LENGTH NOTES:
---	---

CABLE SPAN CALLOUT - PROPOSED
FOR USE ON PAPER SPACE (SHOWN AT 50X)

1	CONDUIT OWNER: LEVEL3 CONDUIT LENGTH: LENGTH CONDUIT QTY: CONDUITS CONDUIT SIZE: SIZE CONDUIT TYPE: TYPE INNER DUCT QTY: INNERDUCTS INNER DUCT SIZE: SIZE INNER DUCT TYPE: TYPE NOTES:
---	--

CONDUIT CALLOUT - EXISTING
FOR USE ON PAPER SPACE (SHOWN AT 50X)
WITH OR WITHOUT INNER DUCT INFO

1	CONDUIT OWNER: LEVEL3 CONDUIT LENGTH: LENGTH CONDUIT QTY: CONDUITS CONDUIT SIZE: SIZE CONDUIT TYPE: TYPE INNER DUCT QTY: INNERDUCTS INNER DUCT SIZE: SIZE INNER DUCT TYPE: TYPE NOTES:
---	--

CONDUIT CALLOUT - PROPOSED
FOR USE ON PAPER SPACE (SHOWN AT 50X)
WITH OR WITHOUT INNER DUCT INFO

1	STRAND TYPE: TYPE STRAND LENGTH: LENGTH NOTES:
---	--

STRAND CALLOUT - EXISTING
FOR USE ON PAPER SPACE (SHOWN AT 50X)

1	STRAND TYPE: TYPE STRAND LENGTH: LENGTH NOTES:
---	--

STRAND CALLOUT - PROPOSED
FOR USE ON PAPER SPACE (SHOWN AT 50X)

1	NOTES
---	-------

1	NOTES
---	-------

SYMBOL CORRESPONDS TO PHOTO LOCATIONS AND ORIENTATION. SEE SHEET # FOR SITE PHOTOGRAPHS.



3				AS-BUILT
2				REVISION # 1
1	01-14-17	ML	TVP	ORIGINAL
NO.	DATE	ENG DESIGN	DRAFTING	COMMENT



LEVEL 3 ENGINEER: MIKE WOOLHOUSE 952-351-2353
ENGINEERING FIRM: TLR Consulting MIKE LAUGHLIN 320-963-2836
PROJECT NUMBER: N313283
LOCATION: ON NET BUILD TO 13490 BASS LAKE RD FOR DIVERSE ENTRY.
DRAWING NAME: 13490 BASS LAKE RD.dwg

GENERAL NOTES

1. Contractor must obtain locates prior to disturbing the ground.
2. Contractor must have a copy of the approved permit from the appropriate agency on the jobsite at all times.
3. All cable will be placed at standard minimum depth. (Level 3 standard is 36" deep unless otherwise directed by a Level 3 representative.)
4. Any landscaping will be replaced to equal or better than that which existed prior to work.
5. Project site will be properly secured prior to the end of each day.
6. All work is to be in accordance with all authorities having jurisdiction in the work zone.
7. Contractors are advised to contact Level 3 for any additional information or clarification concerning scope of work or the requirements necessary for project completion.
8. Contractor is responsible to field verify all dimensions, quantities and existing conditions prior to construction. If a significant change to the running line is needed, please contact your Level 3 representative before proceeding.
9. Before construction begins, contractor shall take appropriate precautions to avoid any potential obstructions prior to proceeding with work.
10. No construction on private property will commence until approval is given by the appropriate Level 3 employee.
11. Contractor shall not proceed with work until they have received a Purchase Order and have been directed to do so by an authorized Level 3 representative.
12. Contractor shall not exceed the Purchase Order value without authorization in writing from the appropriate Level 3 representative.
13. As-Builts will be required for each project including cable footage sequentials at every access point, slack loop, splice location, pole and termination point. Contractor should also provide notes of all changes in depths, running lines, mh/hh locations, and any other applicable notes to depict the work that took place. NOTE: All major changes need to be pre-approved by an authorized Level 3 employee prior to starting the work.
14. ISP SPLICING DONE BY ISP VENDOR

 SYMBOL CORRESPONDS TO PHOTO LOCATIONS AND ORIENTATION. SEE SHEET # FOR SITE PHOTOGRAPHS.



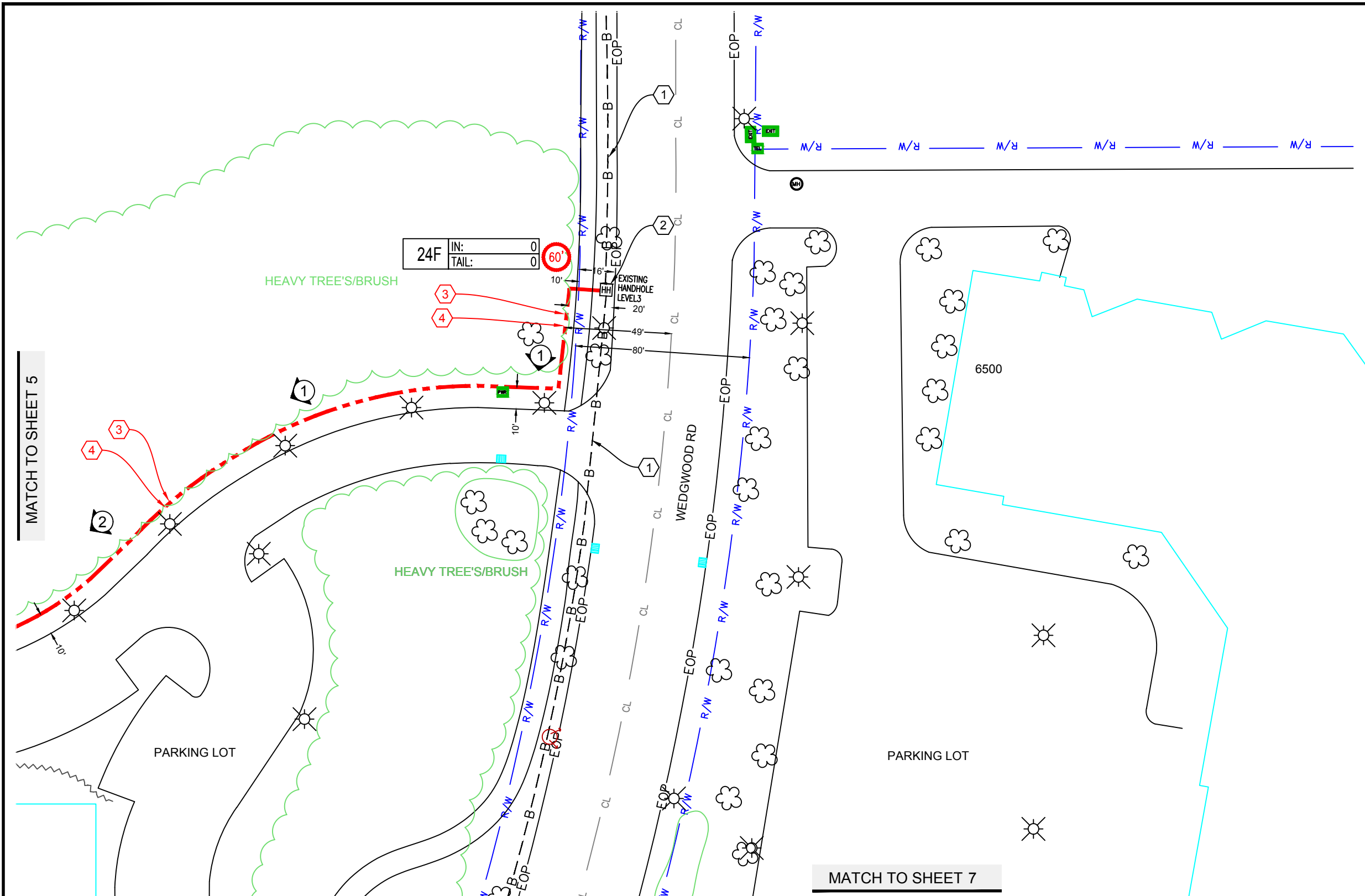
3				AS-BUILT
2				REVISION # 1
1	01-14-17	ML	TVP	ORIGINAL
NO.	DATE	ENG DESIGN	DRAFTING	COMMENT



LEVEL 3 ENGINEER: MIKE WOOLHOUSE 952-351-2353
 ENGINEERING FIRM: TLR Consulting MIKE LAUGHLIN 320-963-2836
 PROJECT NUMBER: N313283
 LOCATION: ON NET BUILD TO 13490 BASS LAKE RD
 FOR DIVERSE ENTRY.
 DRAWING NAME: 13490 BASS LAKE RD.dwg

CONSTRUCTION NOTES

- ① EXISTING LEVEL3 FIBER
- ② EXISTING LEVEL3 H.H 60' SLACK
- ③ CONDUIT OWNER: LEVEL3
CONDUIT LENGTH: 344'
CONDUIT QTY: 3
CONDUIT SIZE: 1.25"
CONDUIT TYPE: HDPE
NOTES: DIRECTIONAL BORE
- ④ CABLE FIBERS: 24F NON ARMORED
CABLE OWNER: LEVEL3
CABLE LENGTH: 404'
NOTES:



MATCH TO SHEET 5

MATCH TO SHEET 7

Page Rate Card

Unit Code & Description	Units	Estimated Quantity	Actual Quantity
UGB-30550 - Directional Bore up to 1500': 3 HDPE conduits up to 2" (on one reel)	FT	344'	
UGB-30830 - Place Locate Wire in Existing Conduit	FT	344'	
UGB-30960 - Place up to 288 count FOC in conduit, up to 1500'	FT	404'	
UGB-31040 - Reposition Slack in existing cable up to 288 count FOC	FT	60	
UGB-31610 - Core Bore MH/HH: 4" Outside Diameter	EACH	1	
UGB-31640 - Excavate Small Pit: 6'x4'x5'	EACH	1	
UGB-31970 - Pump / De-Gas Manhole/Handhole	EACH	1	
UGB-32010 - Place Vertical Ground Rod	EACH	1	
UGB-32020 - Place Vertical Ground Wire	EACH	15'	
UGB-31980 - Frozen Ground ADDER	FOOT	344'	

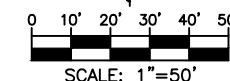
Page Rate Card

Unit Code & Description	Units	Estimated Quantity	Actual Quantity
MAT-90070 - CONDUIT: 1 1/4 HDPE SDR-11	FT	1032'	
MAT-90760 - Conduit Plug: 1-1/4" Blank Jackmoon equivalent	EACH	2	
MAT-90770 - Conduit Plug: 1-1/4" with Cable Simplex Plug Jackmoon equivalent	EACH	1	
MAT-91320 - Miscellaneous fiber optic cable PROVIDED BY Level3	FT	404'	
MAT-91980 - Locate wire #12 AWG - solid copper with insulated jacket	FT	344'	
MAT-92130 - Vertical Ground Rod 8' feet 5/8" ground rod	EACH	1	
MAT-92140 - Miscellaneous Ground Wire	FT	15'	

SYMBOL CORRESPONDS TO PHOTO LOCATIONS AND ORIENTATION. SEE SHEET # FOR SITE PHOTOGRAPHS.



Know what's below.
Call before you dig.



3				AS-BUILT
2				REVISION # 1
1	01-14-17	ML	TVP	ORIGINAL
NO.	DATE	ENG DESIGN	DRAFTING	COMMENT



LEVEL 3 ENGINEER: MIKE WOOLHOUSE 952-351-2353
 ENGINEERING FIRM: TLR Consulting MIKE LAUGHLIN 320-963-2836
 PROJECT NUMBER: N313283
 LOCATION: ON NET BUILD TO 13490 BASS LAKE RD
 FOR DIVERSE ENTRY.
 DRAWING NAME: 13490 BASS LAKE RD.dwg

MATCH TO SHEET 4

MATCH TO SHEET 7

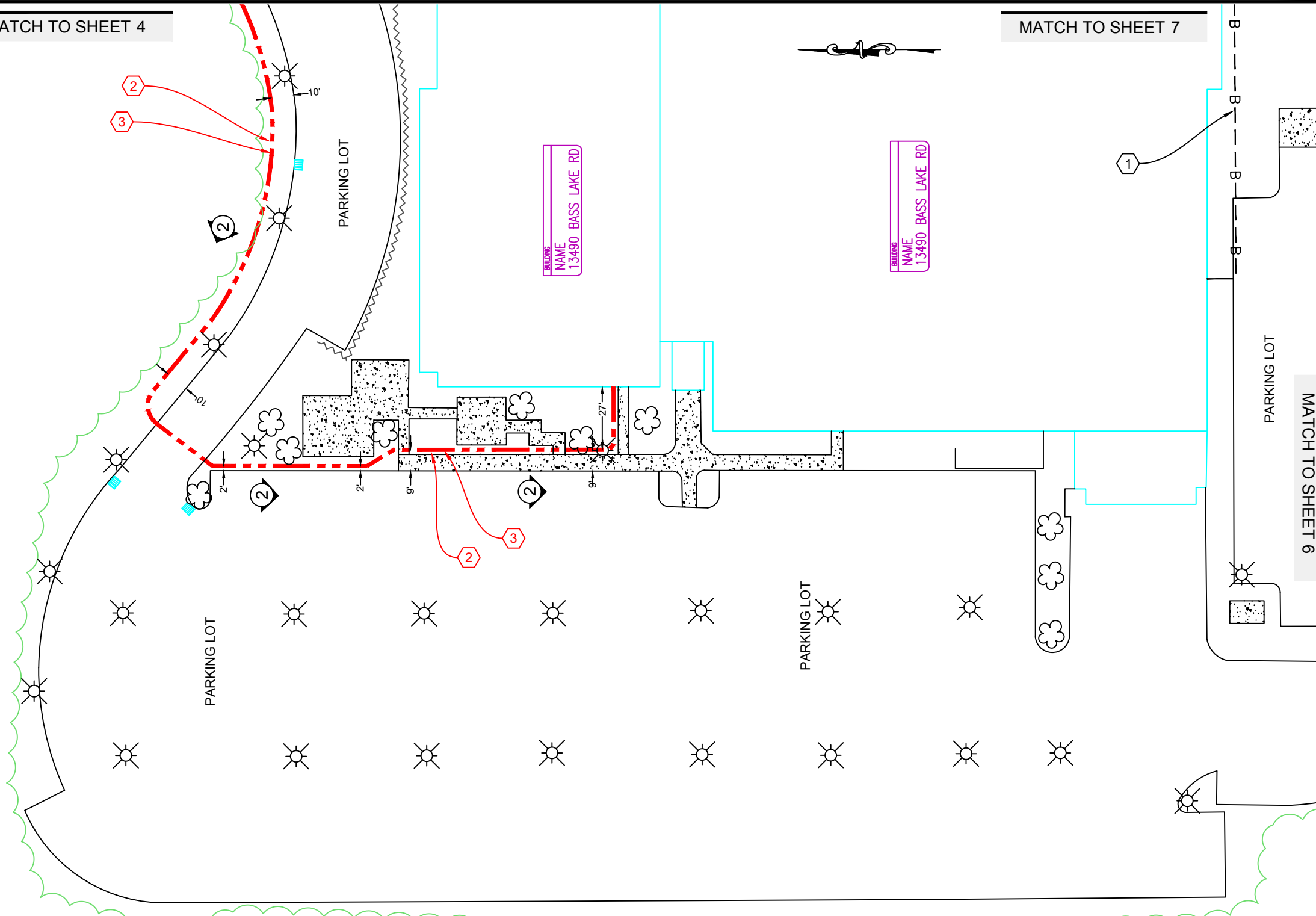
CONSTRUCTION NOTES

1 NOTES: EXISTING LEVEL3 FIBER

2 CONDUIT OWNER: LEVEL3
 CONDUIT LENGTH: 420'
 CONDUIT QTY: 3
 CONDUIT SIZE: 1.25"
 CONDUIT TYPE: HDPE
 NOTES: DIRECTIONAL BORE

3 CABLE FIBERS: 24F NON ARMORED
 CABLE OWNER: LEVEL3
 CABLE LENGTH: 420'
 NOTES:

HEAVY TREES/BRUSH



BUILDING NAME
13490 BASS LAKE RD

BUILDING NAME
13490 BASS LAKE RD

MATCH TO SHEET 6

MATCH TO SHEET 1

Page Rate Card

Unit Code & Description	Units	Estimated Quantity	Actual Quantity
UGB-30550 - Directional Bore up to 1500': 3 HDPE conduits up to 2" (on one reel)	FT	420'	
UGB-30960 - Place up to 288 count FOC in conduit, up to 1500'	FT	420'	
UGB-30830 - Place Locate Wire in Existing Conduit	FT	420'	
UGB-31980 - Frozen Ground ADDER	FOOT	420'	

Page Rate Card

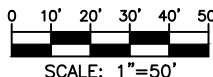
Unit Code & Description	Units	Estimated Quantity	Actual Quantity
MAT-90070 - CONDUIT: 1 1/4 HDPE SDR-11	FT	1260'	
MAT-91320 - Miscellaneous fiber optic cable PROVIDED BY Level3	FT	420'	
MAT-90760 - Conduit Plug: 1-1/4" Blank Jackmoon equivalent	EACH	2	
MAT-90770 - Conduit Plug: 1-1/4" with Cable Simplex Plug Jackmoon equivalent	EACH	1	
MAT-91980 - Locate wire #12 AWG - solid copper with insulated jacket	FT	420'	

SYMBOL CORRESPONDS TO PHOTO LOCATIONS AND ORIENTATION. SEE SHEET # FOR SITE PHOTOGRAPHS.

3				AS-BUILT
2				REVISION # 1
1	01-14-17	ML	TVP	ORIGINAL
NO.	DATE	ENG DESIGN	DRAFTING	COMMENT



Know what's below.
Call before you dig.

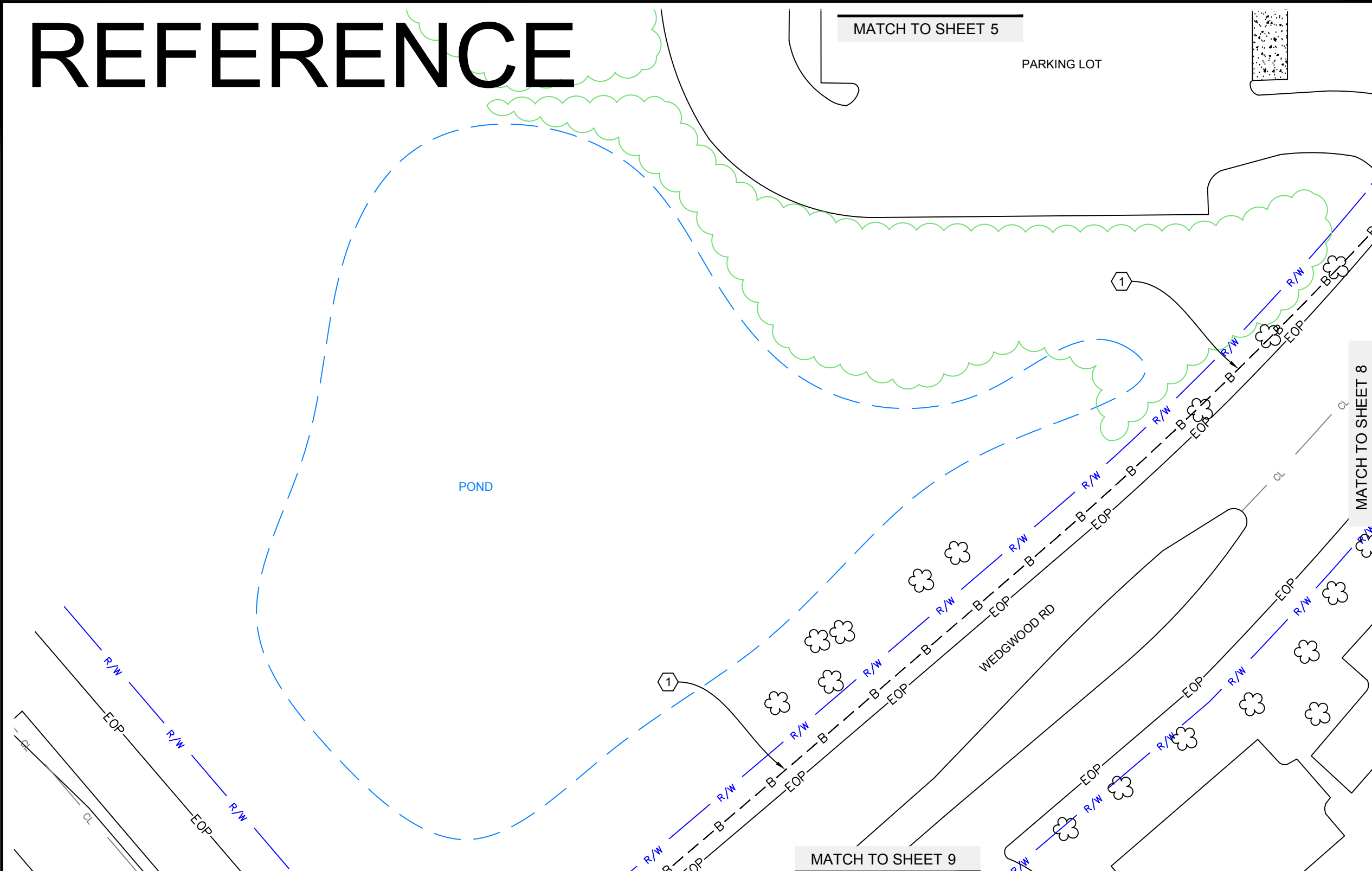


LEVEL 3 ENGINEER: MIKE WOOLHOUSE 952-351-2353
 ENGINEERING FIRM: TLR Consulting MIKE LAUGHLIN 320-963-2836
 PROJECT NUMBER: N313283
 LOCATION: ON NET BUILD TO 13490 BASS LAKE RD
 FOR DIVERSE ENTRY.
 DRAWING NAME: 13490 BASS LAKE RD.dwg

REFERENCE

CONSTRUCTION NOTES

1 EXISTING LEVEL3 FIBER



SYMBOL CORRESPONDS TO PHOTO LOCATIONS AND ORIENTATION. SEE SHEET # FOR SITE PHOTOGRAPHS.

Total Underground Rate Card

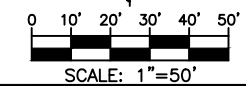
Unit Code & Description	Units	Estimated Quantity	Actual Quantity

Total Material Rate Card

Unit Code & Description	Units	Estimated Quantity	Actual Quantity



Know what's below.
Call before you dig.



3				AS-BUILT
2				REVISION # 1
1	01-14-17	ML	TVP	ORIGINAL
NO.	DATE	ENG DESIGN	DRAFTING	COMMENT



LEVEL 3 ENGINEER: MIKE WOOLHOUSE 952-351-2353
 ENGINEERING FIRM: TLR Consulting MIKE LAUGHLIN 320-963-2836
 PROJECT NUMBER: N313283
 LOCATION: ON NET BUILD TO 13490 BASS LAKE RD
 FOR DIVERSE ENTRY.
 DRAWING NAME: 13490 BASS LAKE RD.dwg

CONSTRUCTION NOTES

- ① EXISTING LEVEL3 FIBER
- ② EXISTING LEVEL3 H.H.

SYMBOL CORRESPONDS TO PHOTO LOCATIONS AND ORIENTATION. SEE SHEET # FOR SITE PHOTOGRAPHS.

3				AS-BUILT
2				REVISION # 1
1	01-14-17	ML	TVP	ORIGINAL
NO.	DATE	ENG DESIGN	DRAFTING	COMMENT

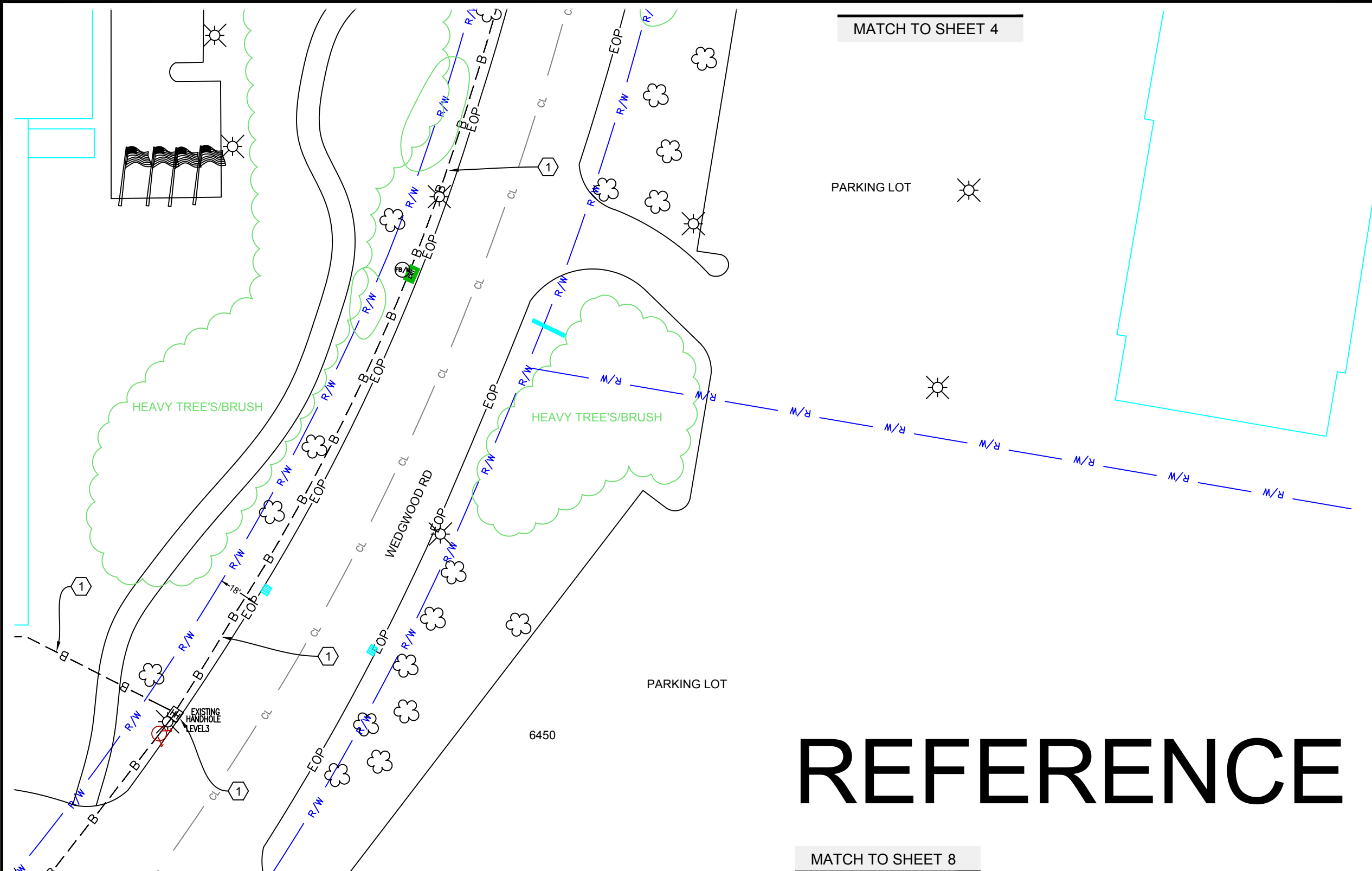


LEVEL 3 ENGINEER: MIKE WOOLHOUSE 952-351-2353
 ENGINEERING FIRM: TLR Consulting MIKE LAUGHLIN 320-963-2836
 PROJECT NUMBER: N313283
 LOCATION: ON NET BUILD TO 13490 BASS LAKE RD
 FOR DIVERSE ENTRY.
 DRAWING NAME: 13490 BASS LAKE RD.dwg

MATCH TO SHEET 4

REFERENCE

MATCH TO SHEET 8



Total Underground Rate Card

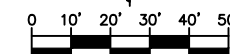
Unit Code & Description	Units	Estimated Quantity	Actual Quantity

Total Material Rate Card

Unit Code & Description	Units	Estimated Quantity	Actual Quantity

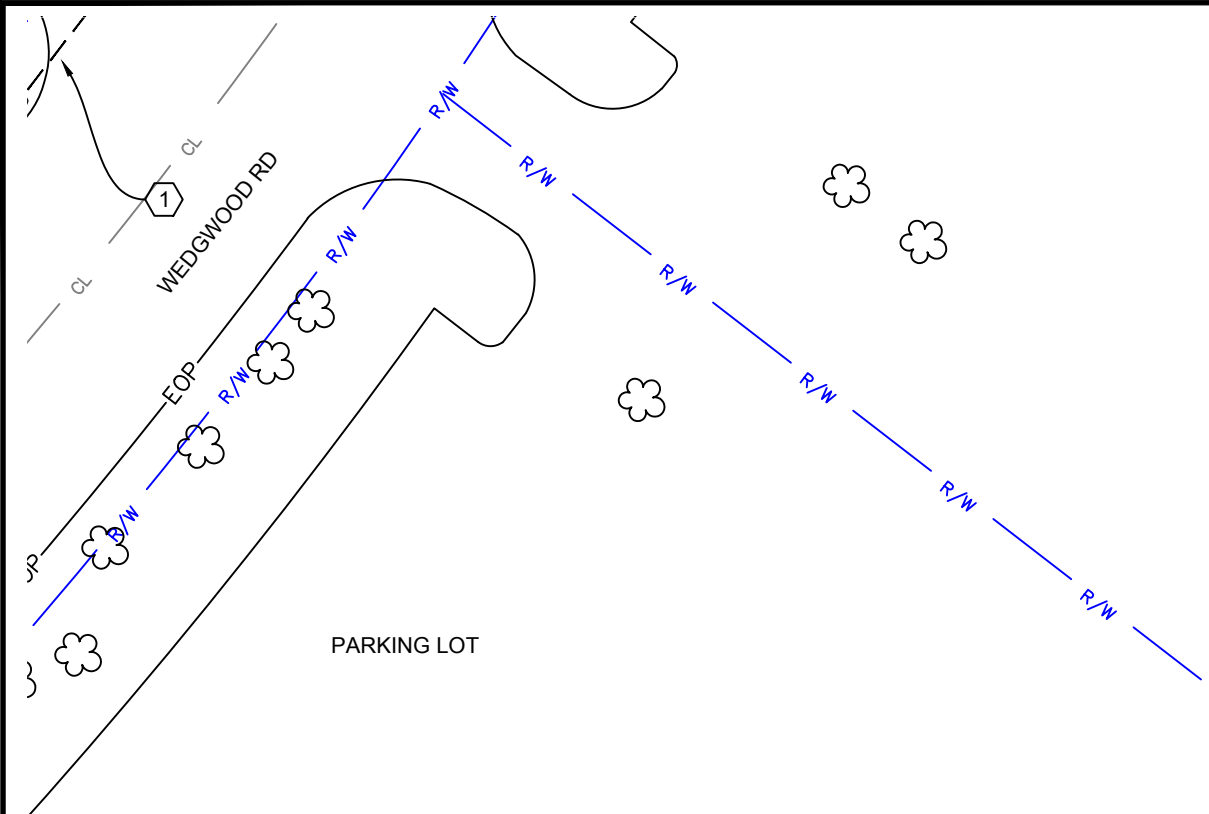


Know what's below.
Call before you dig.



SCALE: 1"=50'

MATCH TO SHEET 7



CONSTRUCTION NOTES

1 EXISTING LEVEL3 FIBER

SYMBOL CORRESPONDS TO PHOTO LOCATIONS AND ORIENTATION. SEE SHEET # FOR SITE PHOTOGRAPHS.

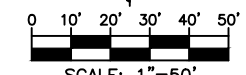
REFERENCE

Total Underground Rate Card			
Unit Code & Description	Units	Estimated Quantity	Actual Quantity

Total Material Rate Card			
Unit Code & Description	Units	Estimated Quantity	Actual Quantity



Know what's below.
Call before you dig.



SCALE: 1"=50'

3				AS-BUILT
2				REVISION # 1
1	01-14-17	ML	TVP	ORIGINAL
NO.	DATE	ENG DESIGN	DRAFTING	COMMENT



LEVEL 3 ENGINEER: MIKE WOOLHOUSE 952-351-2353
 ENGINEERING FIRM: TLR Consulting MIKE LAUGHLIN 320-963-2836
 PROJECT NUMBER: N313283
 LOCATION: ON NET BUILD TO 13490 BASS LAKE RD
 FOR DIVERSE ENTRY.
 DRAWING NAME: 13490 BASS LAKE RD.dwg

CONSTRUCTION NOTES

① EXISTING LEVEL3 FIBER

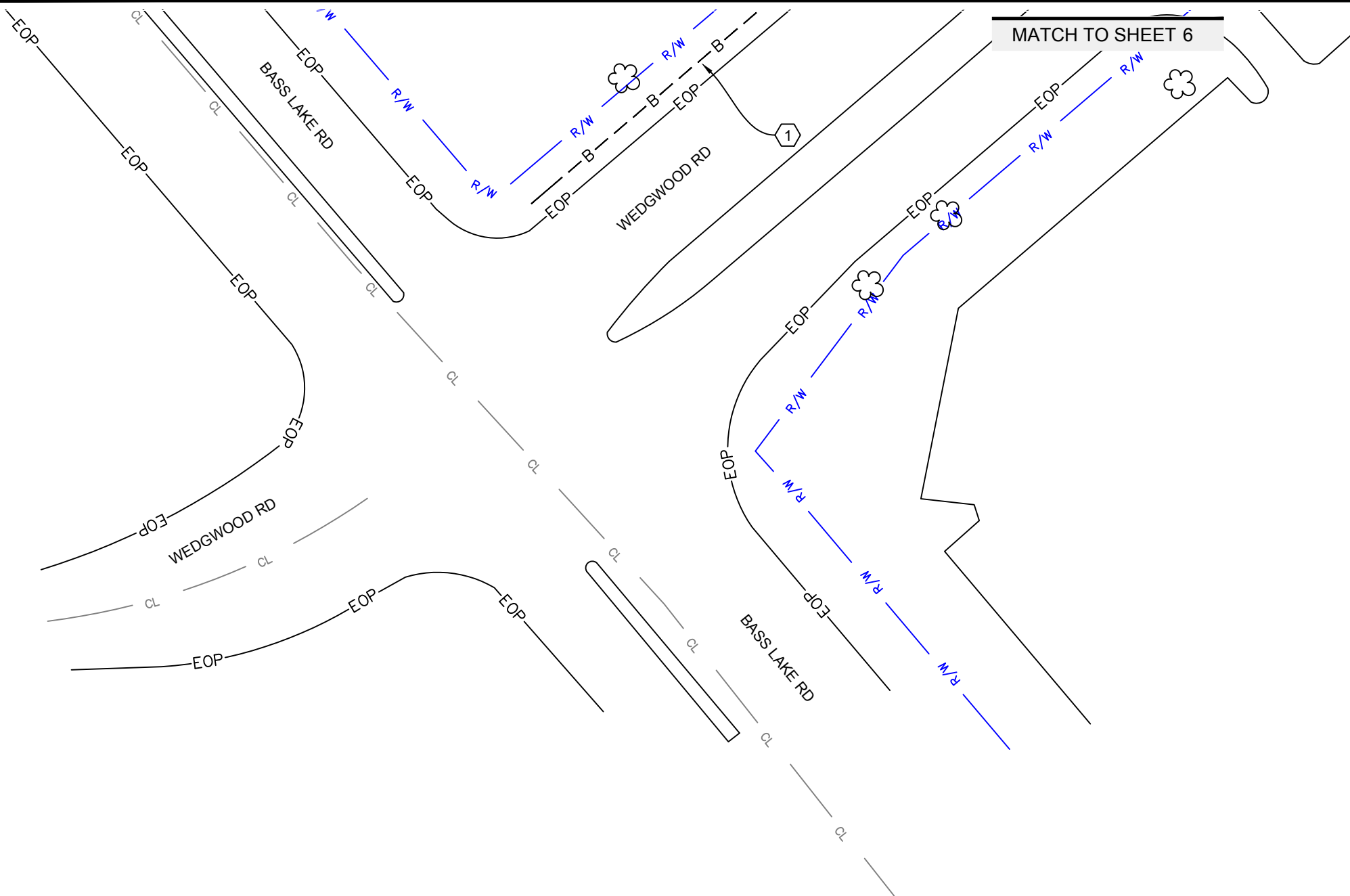
SYMBOL CORRESPONDS TO PHOTO LOCATIONS AND ORIENTATION. SEE SHEET # FOR SITE PHOTOGRAPHS.

3				AS-BUILT
2				REVISION # 1
1	01-14-17	ML	TVP	ORIGINAL
NO.	DATE	ENG DESIGN	DRAFTING	COMMENT



LEVEL 3 ENGINEER: MIKE WOOLHOUSE 952-351-2353
 ENGINEERING FIRM: TLR Consulting MIKE LAUGHLIN 320-963-2836
 PROJECT NUMBER: N313283
 LOCATION: ON NET BUILD TO 13490 BASS LAKE RD
 FOR DIVERSE ENTRY.
 DRAWING NAME: 13490 BASS LAKE RD.dwg

REFERENCE



Total Underground Rate Card

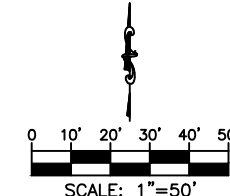
Unit Code & Description	Units	Estimated Quantity	Actual Quantity

Total Material Rate Card

Unit Code & Description	Units	Estimated Quantity	Actual Quantity

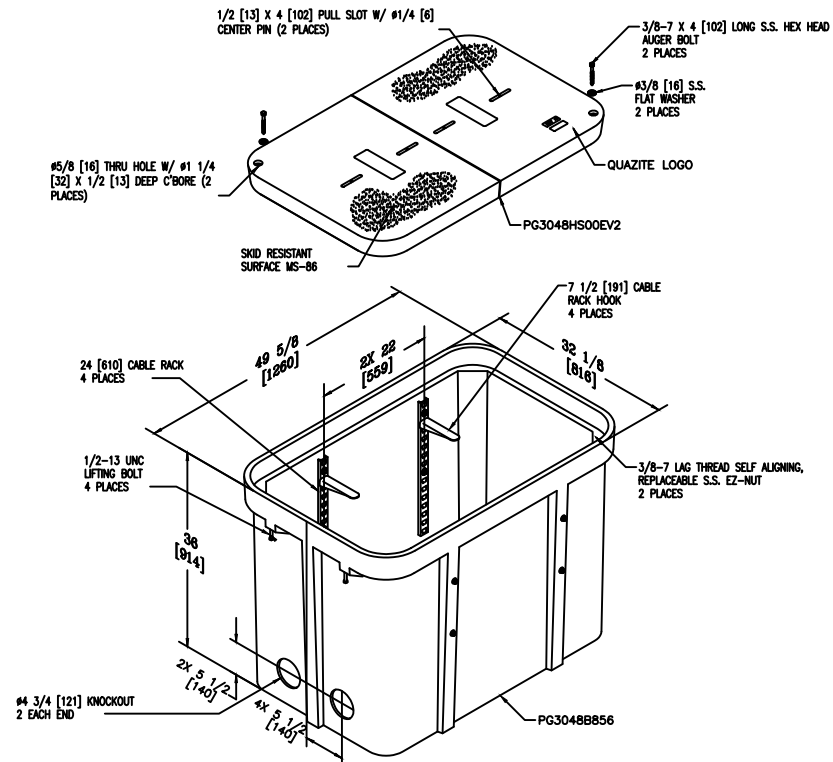


Know what's below.
Call before you dig.



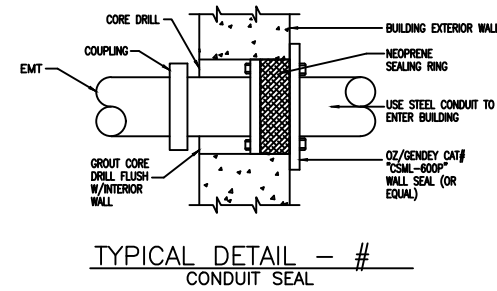
SCALE: 1"=50'

TYPICALS



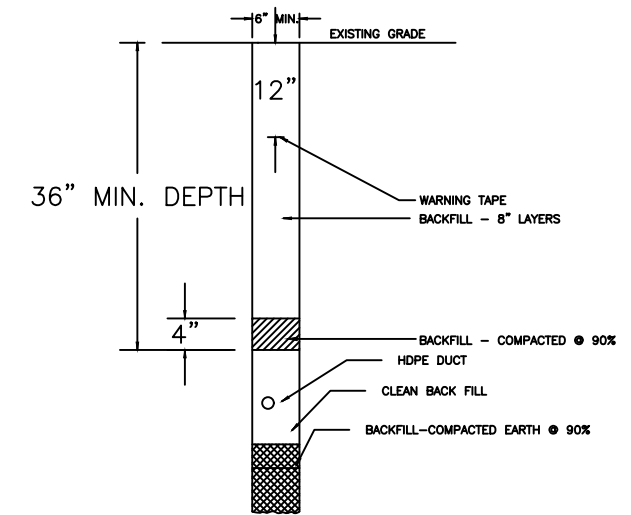
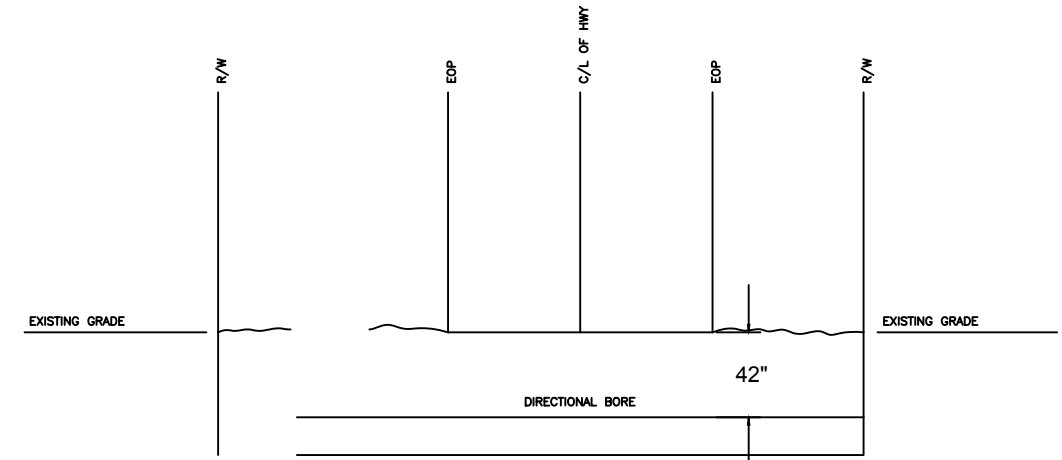
TYPICAL DETAIL - #

QUAZITE 30X48X36 ASSEMBLY
 W/(4) 24" CABLE RACKS
 & (4) 7 1/2" HOOKS
 PG3048Z987EV2

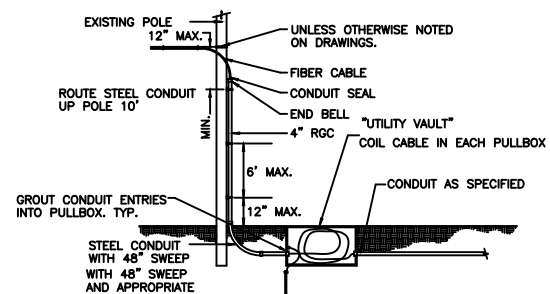


TYPICAL DETAIL - #
 DIRECTIONAL BORE
 UNDER ROAD / HIGHWAY / INTERSTATE

WEDGWOOD RD



TYPICAL DETAIL - #
 TRENCH IN SOIL (NON TRAFFIC AREAS)



TYPICAL DETAIL - #
 AERIAL/UNDERGROUND TRANSITION

1 SYMBOL CORRESPONDS TO PHOTO LOCATIONS AND ORIENTATION. SEE SHEET # FOR SITE PHOTOGRAPHS.



Know what's below.
 Call before you dig.

3				AS-BUILT
2				REVISION # 1
1	01-14-17	ML	TVP	ORIGINAL
NO.	DATE	ENG DESIGN	DRAFTING	COMMENT



LEVEL 3 ENGINEER: MIKE WOOLHOUSE 952-351-2353
 ENGINEERING FIRM: TLR Consulting MIKE LAUGHLIN 320-963-2836
 PROJECT NUMBER: N313283
 LOCATION: ON NET BUILD TO 13490 BASS LAKE RD FOR DIVERSE ENTRY.
 DRAWING NAME: 13490 BASS LAKE RD.dwg

DETAILS



START FROM EXISTING LEVEL3 H.H AT WEDGWOOD RD FOLLOW DRIVEWAY GOING WEST



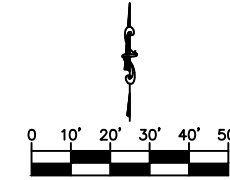
FIBER ROUTE ALONG NORTHSIDE OF DRIVEWAY GOING WEST THEN GOING SOUTH ALONG PARKING LOT AND TO THE BUILDING



SYMBOL CORRESPONDS TO PHOTO LOCATIONS AND ORIENTATION. SEE SHEET # FOR SITE PHOTOGRAPHS.



Know what's below.
Call before you dig.



SCALE: 1"=50'

3				AS-BUILT
2				REVISION # 1
1	01-14-17	ML	TVP	ORIGINAL
NO.	DATE	ENG DESIGN	DRAFTING	COMMENT

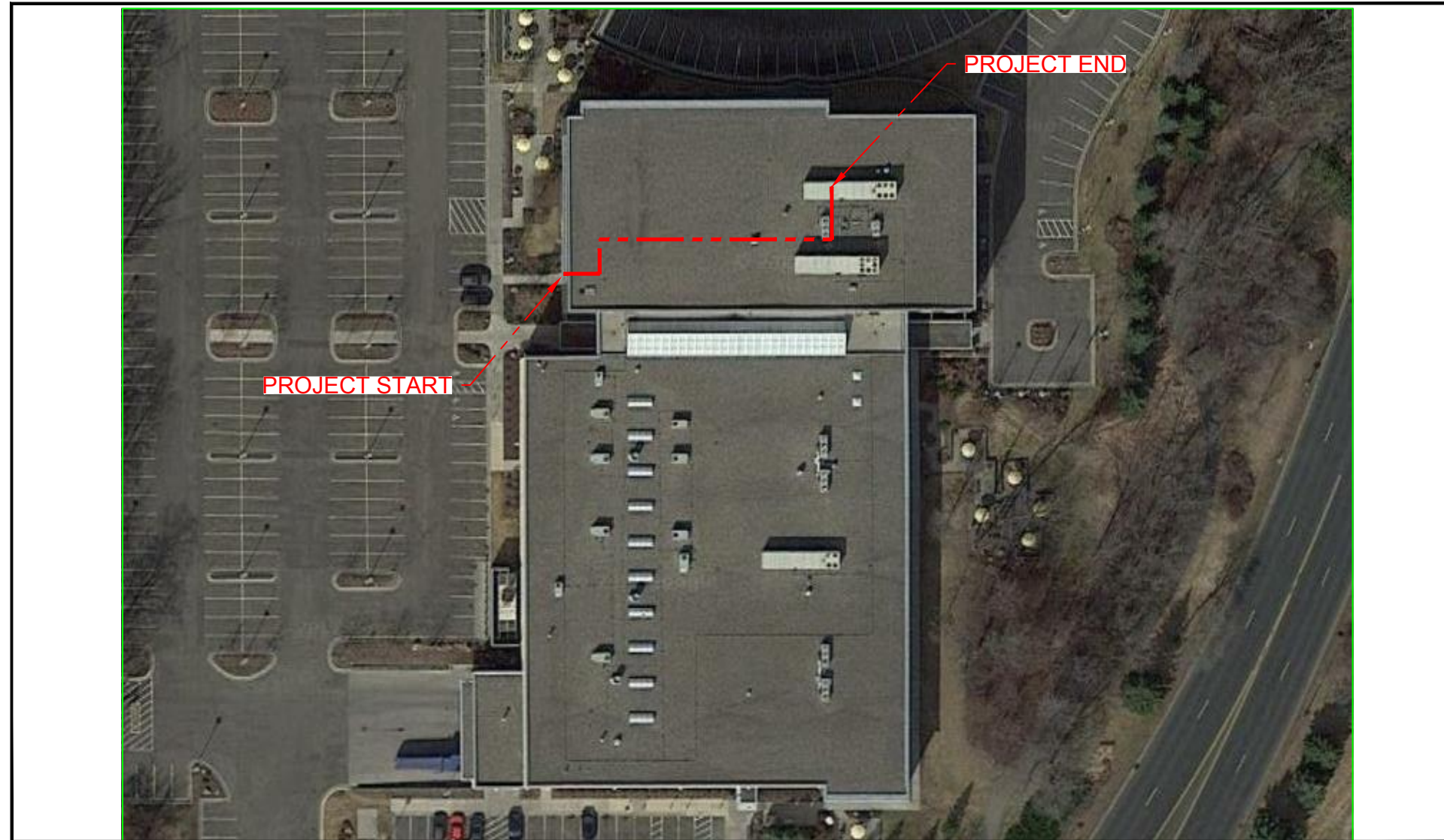
Level(3)
COMMUNICATIONS

LEVEL 3 ENGINEER: MIKE WOOLHOUSE 952-351-2353
 ENGINEERING FIRM: TLR Consulting MIKE LAUGHLIN 320-963-2836
 PROJECT NUMBER: N313283
 LOCATION: ON NET BUILD TO 13490 BASS LAKE RD
 FOR DIVERSE ENTRY.
 DRAWING NAME: 13490 BASS LAKE RD.dwg

CONFIDENTIAL/PROPRIETARY

SHEET: 11 OF 17

ADDRESS: 13490 BASS LAKE RD, MAPLE GROVE, MN
 PROJECT NAME: ISP DIVERSE ENTRY-DATA RECOGNITION CORP.



SITE LOCATION

CONTACTS

CONTACT INFO: JOHN WIEBE
 PHONE: 763-268-2384 / 651-587-8424

SITE INDEX

- 1 - ISP SPLICE
- 2 - ISP SHEET
- 3 - ISP RAKE CARD TABLE

SCOPE OF WORK:

ISP VENDOR IS TO CORE THE OUTSIDE WALL INTO THE BUILDING THEN INSTALL A 4" CONDUIT AND J-BOX ON OUTSIDE WALL, FROM THE INSIDE MOUNT ONE J-BOX AND INSTALL A 2" EMT CONDUIT WITH 24CT NON ARMORED FIBER TO SERVER ROOM.
 THE TOTAL BUILD FOR ISP PROJECT IS 172'

SYMBOL CORRESPONDS TO PHOTO LOCATIONS AND ORIENTATION. SEE SHEET # FOR SITE PHOTOGRAPHS.

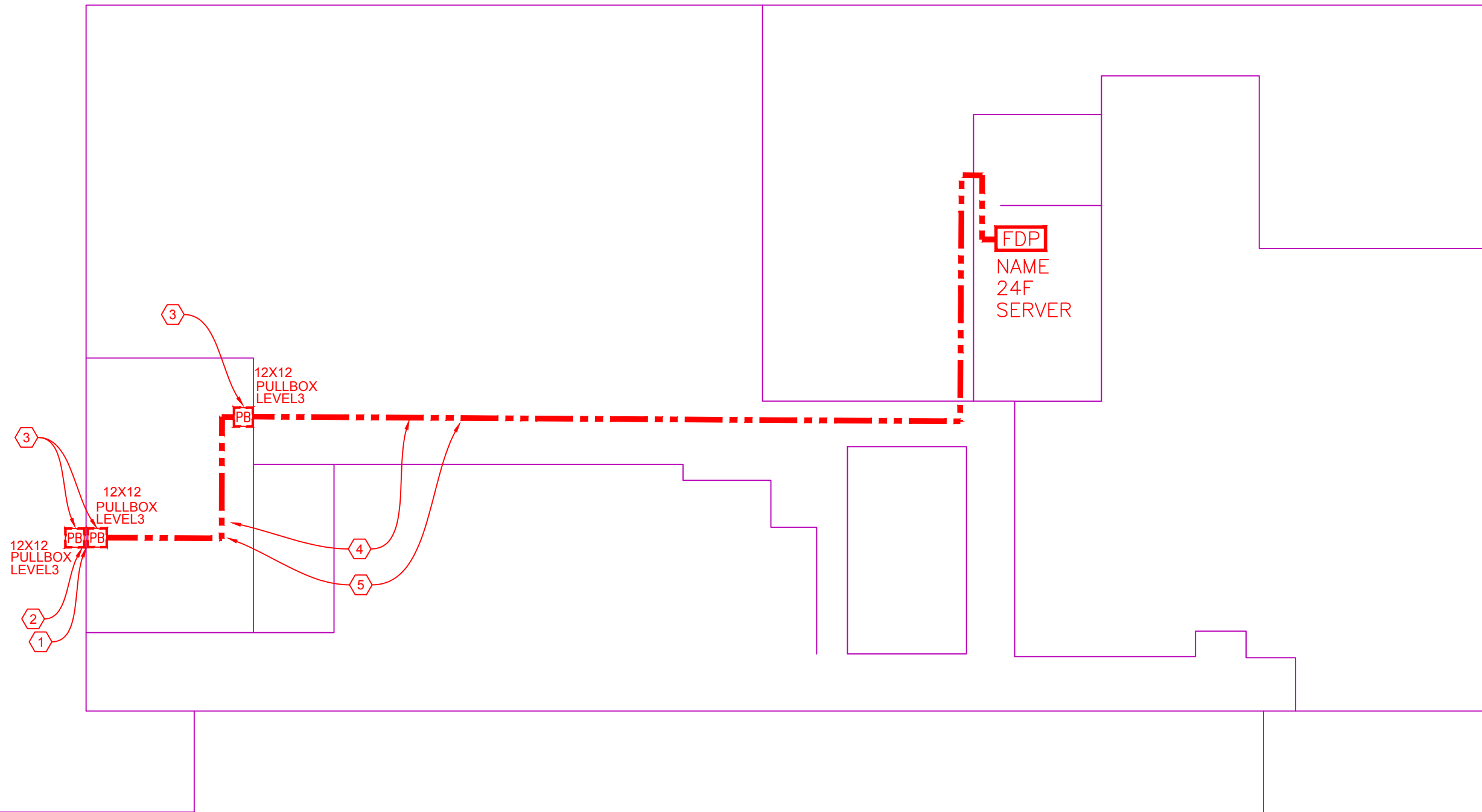
3				AS-BUILT
2				REVISION # 1
1	01-14-17	ML	TVP	ORIGINAL
NO.	DATE	ENG DESIGN	DRAFTING	COMMENT



LEVEL 3 ENGINEER: MIKE WOOLHOUSE 952-351-2353
 ENGINEERING FIRM: TLR Consulting MIKE LAUGHLIN 320-963-2836
 PROJECT NUMBER: N313283
 LOCATION: ON NET BUILD TO 13490 BASS LAKE RD FOR DIVERSE ENTRY.
 DRAWING NAME: 13490 BASS LAKE RD.dwg

CONSTRUCTION NOTES

- ① CORE WALL
- ② CONDUIT OWNER: TWTC LEVEL3
CONDUIT LENGTH: 4'
CONDUIT QTY: 1
CONDUIT SIZE: 4"
CONDUIT TYPE: EMT
NOTES: OUTSIDE OF BUILDING
- ③ JUNCTION BOX 12X12 TOTAL 3
- ④ CONDUIT OWNER: TWTC LEVEL3
CONDUIT LENGTH: 172'
CONDUIT QTY: 1
CONDUIT SIZE: 2"
CONDUIT TYPE: EMT
NOTES: IN BUILDING
- ⑤ CABLE FIBERS: 24CT NON ARMORED
CABLE OWNER: TWTC LEVEL3
CABLE LENGTH: 172'
NOTES: REEL # 0000



SYMBOL CORRESPONDS TO PHOTO LOCATIONS AND ORIENTATION. SEE SHEET # FOR SITE PHOTOGRAPHS.

Page Rate Card			
Unit Code & Description	Units	Estimated Quantity	Actual Quantity
ISP-41010 - Core drill up to 2" diameter.	EACH	1	
ISP-41180 - Place junction box up to 12"x12"	EACH	3	
ISP-41090 - Install EMT or AC power conduit up to 2" in diameter.	FOOT	172'	
ISP-41100 - Install EMT or AC power conduit greater than 2" up to 4" in dia.	FOOT	4'	
ISP-42100 - Place fiber cable in conduit or innerduct.	FOOT	172'	
ISP-41050 - Cut-out hole in framed wall up to 4" in diameter.	EACH	4	
ISP-41060 - Install fire-stopping.	EACH	4	

Page Rate Card			
Unit Code & Description	Units	Estimated Quantity	Actual Quantity
MAT-90650 - EMT 2"	FT	172'	
MAT-90670 - EMT 4"	FT	4'	
MAT-91120 - ISP Junction Box up to 12" x 12"	EACH	2	
MAT-91320 - Miscellaneous Fiber Optic Cable	FT	172'	
MAT-93090 - EMT Conduit Sweep: any angle - 2"	EACH	8	

811
Know what's below.
Call before you dig.

SCALE: 1"=50'

3				AS-BUILT
2				REVISION # 1
1	01-14-17	ML	TVP	ORIGINAL
NO.	DATE	ENG DESIGN	DRAFTING	COMMENT



LEVEL 3 ENGINEER: MIKE WOOLHOUSE 952-351-2353
 ENGINEERING FIRM: TLR Consulting MIKE LAUGHLIN 320-963-2836
 PROJECT NUMBER: N313283
 LOCATION: ON NET BUILD TO 13490 BASS LAKE RD
 FOR DIVERSE ENTRY.
 DRAWING NAME: 13490 BASS LAKE RD.dwg

SITE PHOTOGRAPHS

Level(3)
COMMUNICATIONS
Connecting and Protecting
the Networked World™



12X12
PULLBOX
LEVEL3

12X12
PULLBOX
LEVEL3

12X12
PULLBOX
LEVEL3

FDP

NAME
24F
SERVER



Know what's below.
Call before you dig.

3				AS-BUILT
2				REVISION # 1
1	01-14-17	ML	TVP	ORIGINAL
NO.	DATE	ENG DESIGN	DRAFTING	COMMENT

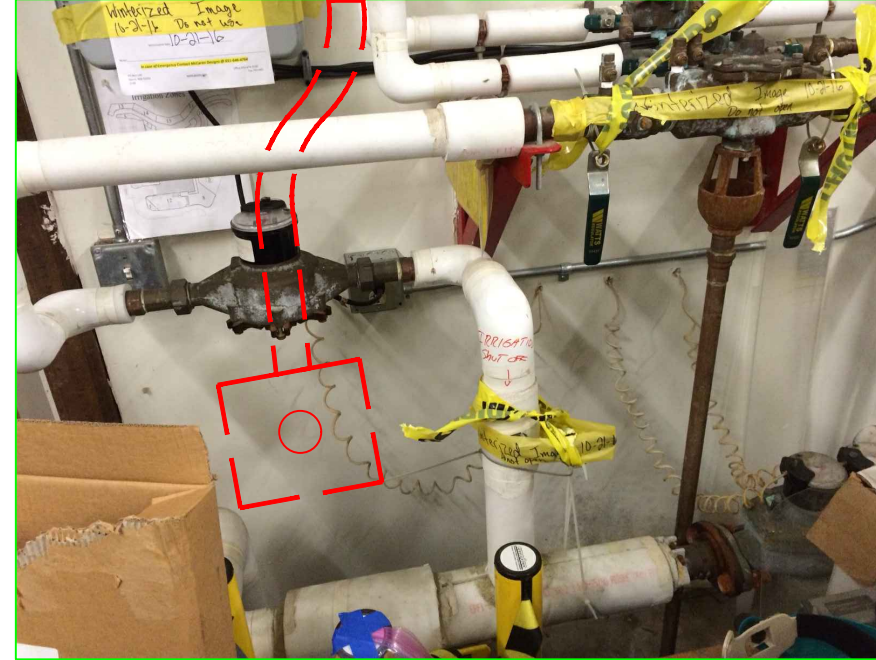
Level(3)
COMMUNICATIONS

LEVEL 3 ENGINEER: MIKE WOOLHOUSE 952-351-2353
ENGINEERING FIRM: TLR Consulting MIKE LAUGHLIN 320-963-2836
PROJECT NUMBER: N313283
LOCATION: ON NET BUILD TO 13490 BASS LAKE RD
FOR DIVERSE ENTRY.
DRAWING NAME: 13490 BASS LAKE RD.dwg

SITE PHOTOGRAPHS



BUILDING ENTRY



INSIDE BUILDING ENTRY



ROUTING UP FROM BUILDING ENTRY



ROUTING UP FROM BUILDING ENTRY TO CEILING



Know what's below.
Call before you dig.

3				AS-BUILT
2				REVISION # 1
1	01-14-17	ML	TVP	ORIGINAL
NO.	DATE	ENG DESIGN	DRAFTING	COMMENT

Level(3)
COMMUNICATIONS

LEVEL 3 ENGINEER: MIKE WOOLHOUSE 952-351-2353
 ENGINEERING FIRM: TLR Consulting MIKE LAUGHLIN 320-963-2836
 PROJECT NUMBER: N313283
 LOCATION: ON NET BUILT TO 13490 BASS LAKE RD
 FOR DIVERSE ENTRY.
 DRAWING NAME: 13490 BASS LAKE RD.dwg

CONFIDENTIAL/PROPRIETARY

SHEET: 15 OF 17

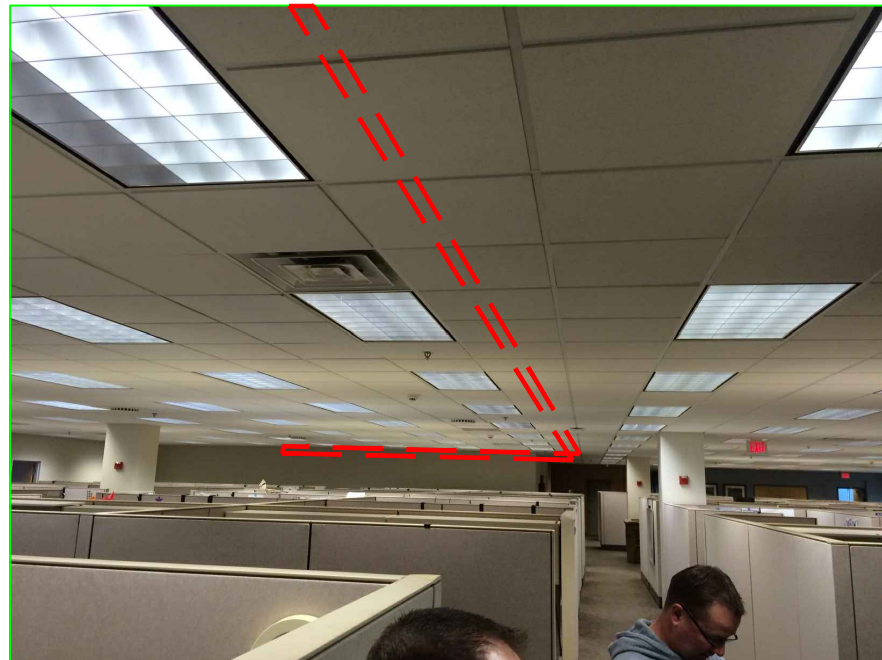
SITE PHOTOGRAPHS



ROUTING ACROSS CEILING



ROUTING ACROSS CEILING TO ROOM EXIT INTO FALSE CEILING



ROUTING IN FALSE CEILING INTO WORKOUT ROOM



ROUTING FROM WORKOUT ROOM INTO SERVER ROOM SECONDARY AREA THEN ROUTING BACK TO MAIN SERVER ROOM LOCATION



Know what's below.
Call before you dig.

3				AS-BUILT
2				REVISION # 1
1	01-14-17	ML	TVP	ORIGINAL
NO.	DATE	ENG DESIGN	DRAFTING	COMMENT



LEVEL 3 ENGINEER: MIKE WOOLHOUSE 952-351-2353
 ENGINEERING FIRM: TLR Consulting MIKE LAUGHLIN 320-963-2836
 PROJECT NUMBER: N313283
 LOCATION: ON NET BUILD TO 13490 BASS LAKE RD
 FOR DIVERSE ENTRY.
 DRAWING NAME: 13490 BASS LAKE RD.dwg

Total Underground Rate Card			
Unit Code & Description	Units	Estimated Quantity	Actual Quantity
UGB-30550 - Directional Bore up to 1500': 3 HDPE conduits up to 2" (on one reel)	FT	764'	
UGB-30830 - Place Locate Wire in Existing Conduit	FT	764'	
UGB-30960 - Place up to 288 count FOC in conduit, up to 1500'	FT	824'	
UGB-31040 - Reposition Slack in existing cable up to 288 count FOC	FT	60	
UGB-31610 - Core Bore MH/HH: 4" Outside Diameter	EACH	1	
UGB-31640 - Excavate Small Pit: 6'x4'x5'	EACH	1	
UGB-31970 - Pump / De-Gas Manhole/Handhole	EACH	1	
UGB-32010 - Place Vertical Ground Rod	EACH	1	
UGB-32020 - Place Vertical Ground Wire	EACH	15'	
UGB-31980 - Frozen Ground ADDER	FOOT	764'	

Total Material Rate Card			
Unit Code & Description	Units	Estimated Quantity	Actual Quantity
MAT-90070 - CONDUIT: 1 1/4 HDPE SDR-11	FT	2292'	
MAT-90760 - Conduit Plug: 1-1/4" Blank Jackmoon equivalent	EACH	4	
MAT-90770 - Conduit Plug: 1-1/4" with Cable Simplex Plug Jackmoon equivalent	EACH	2	
MAT-91320 - Miscellaneous fiber optic cable PROVIDED BY Level3	FT	824'	
MAT-91980 - Locate wire #12 AWG - solid copper with insulated jacket	FT	764'	
MAT-92130 - Vertical Ground Rod 8' feet 5/8" ground rod	EACH	1	
MAT-92140 - Miscellaneous Ground Wire	FT	15'	

Total Inside Plant (ISP) Rate Card			
Unit Code & Description	Units	Estimated Quantity	Actual Quantity
ISP-41010 - Core drill up to 2" diameter.	EACH	1	
ISP-41180 - Place junction box up to 12"x12".	EACH	3	
ISP-41090 - Install EMT or AC power conduit up to 2" in diameter.	FOOT	172'	
ISP-41100 - Install EMT or AC power conduit greater than 2" up to 4" in dia.	FOOT	4'	
ISP-42100 - Place fiber cable in conduit or innerduct.	FOOT	172'	
ISP-41050 - Cut-out hole in framed wall up to 4" in diameter.	EACH	4	
ISP-41060 - Install fire-stopping.	EACH	4	

Total Material Rate Card			
Unit Code & Description	Units	Estimated Quantity	Actual Quantity
MAT-90650 - EMT 2"	FT	172'	
MAT-90670 - EMT 4"	FT	4'	
MAT-91120 - ISP Junction Box up to 12" x 12"	EACH	2	
MAT-91320 - Miscellaneous Fiber Optic Cable	FT	172'	
MAT-93090 - EMT Conduit Sweep: any angle - 2"	EACH	8	

Total Aerial Rate Card			
Unit Code & Description	Units	Estimated Quantity	Actual Quantity

Total Material Rate Card			
Unit Code & Description	Units	Estimated Quantity	Actual Quantity



3				AS-BUILT
2				REVISION # 1
1	01-14-17	ML	TVP	ORIGINAL
NO.	DATE	ENG DESIGN	DRAFTING	COMMENT



LEVEL 3 ENGINEER: MIKE WOOLHOUSE 952-351-2353
ENGINEERING FIRM: TLR Consulting MIKE LAUGHLIN 320-963-2836
PROJECT NUMBER: N313283
LOCATION: ON NET BUILD TO 13490 BASS LAKE RD
FOR DIVERSE ENTRY.
DRAWING NAME: 13490 BASS LAKE RD.dwg