
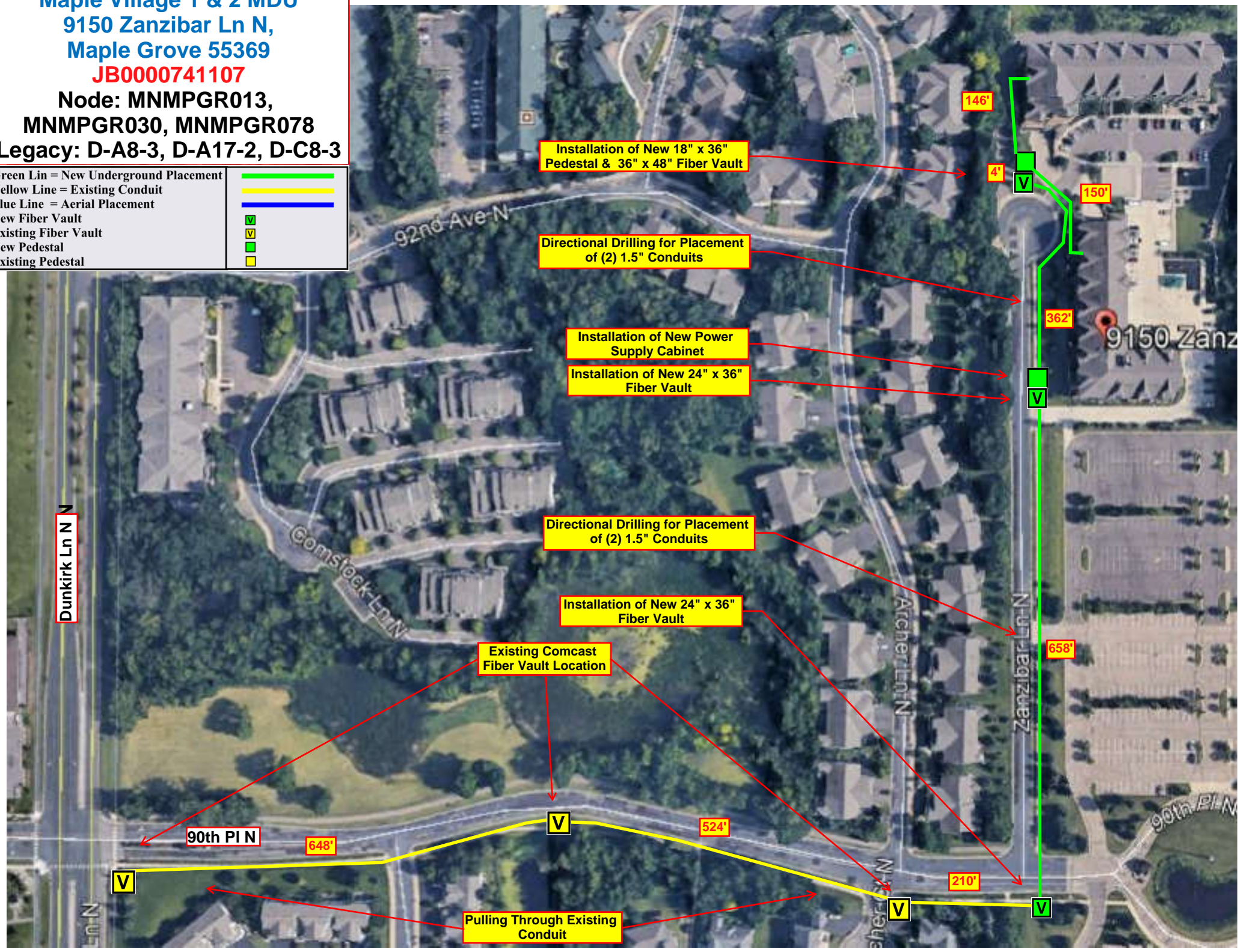


**Maple Village 1 & 2 MDU**  
**9150 Zanzibar Ln N,**  
**Maple Grove 55369**  
**JB0000741107**

**Node: MNMPGR013,**  
**MNMPGR030, MNMPGR078**

**Legacy: D-A8-3, D-A17-2, D-C8-3**

Green Lin = New Underground Placement	
Yellow Line = Existing Conduit	
Blue Line = Aerial Placement	
New Fiber Vault	
Existing Fiber Vault	
New Pedestal	
Existing Pedestal	



Installation of New 18" x 36" Pedestal & 36" x 48" Fiber Vault

Directional Drilling for Placement of (2) 1.5" Conduits

Installation of New Power Supply Cabinet

Installation of New 24" x 36" Fiber Vault

Directional Drilling for Placement of (2) 1.5" Conduits

Installation of New 24" x 36" Fiber Vault

Existing Comcast Fiber Vault Location

90th PI N

Pulling Through Existing Conduit

146'

4'

150'

362'

658'

524'

210'

9150 Zanz

90th PI N



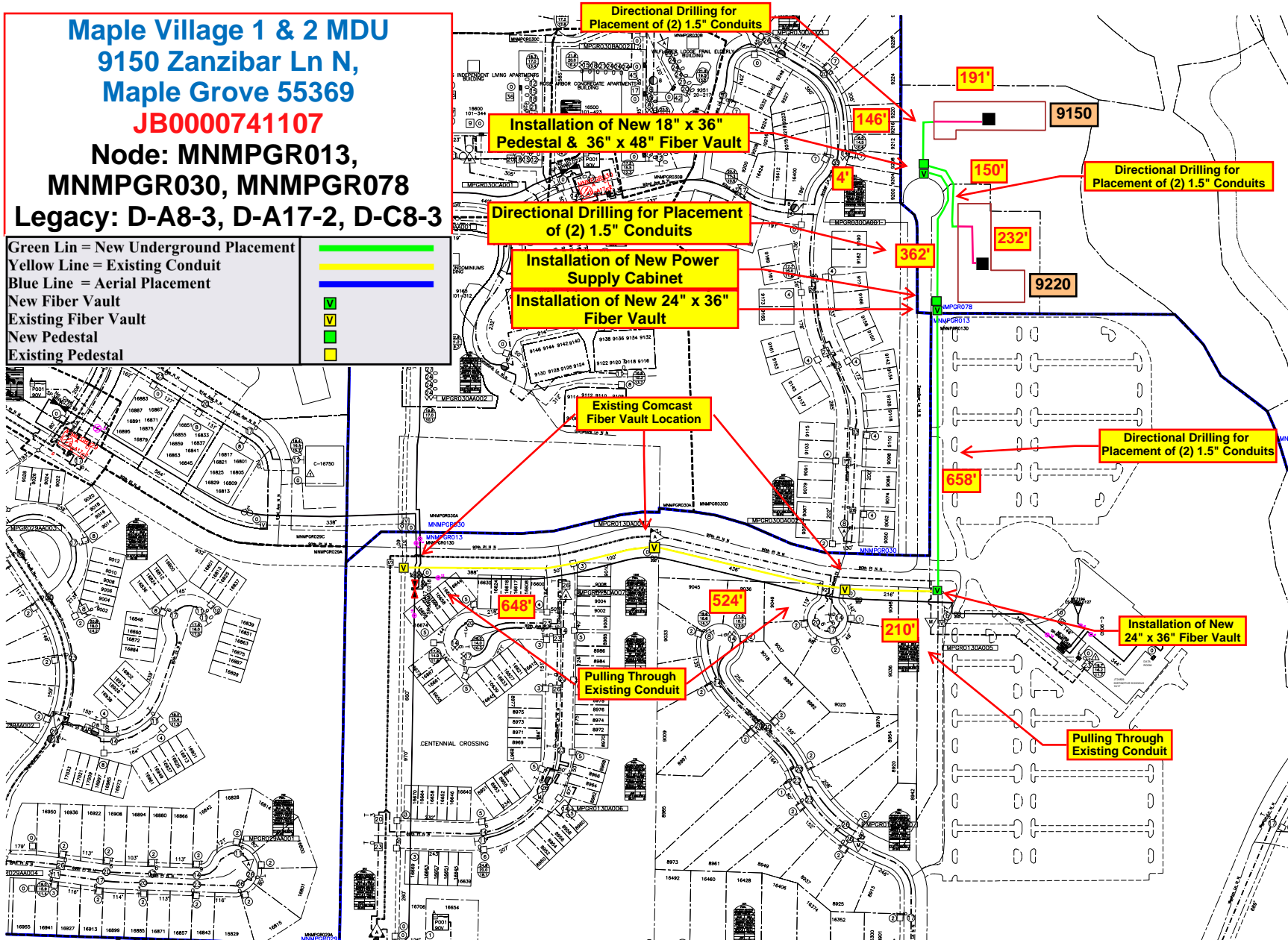
**Maple Village 1 & 2 MDU**  
**9150 Zanzibar Ln N,**  
**Maple Grove 55369**

**JB000741107**

**Node: MNMPGR013,**  
**MNMPGR030, MNMPGR078**

**Legacy: D-A8-3, D-A17-2, D-C8-3**

Green Lin = New Underground Placement  
 Yellow Line = Existing Conduit  
 Blue Line = Aerial Placement  
 New Fiber Vault  
 Existing Fiber Vault  
 New Pedestal  
 Existing Pedestal



**Directional Drilling for Placement of (2) 1.5" Conduits**

**Installation of New 18" x 36" Pedestal & 36" x 48" Fiber Vault**

**Directional Drilling for Placement of (2) 1.5" Conduits**

**Installation of New Power Supply Cabinet**

**Installation of New 24" x 36" Fiber Vault**

**Existing Comcast Fiber Vault Location**

**Directional Drilling for Placement of (2) 1.5" Conduits**

**Directional Drilling for Placement of (2) 1.5" Conduits**

**Installation of New 24" x 36" Fiber Vault**

**Pulling Through Existing Conduit**

**Pulling Through Existing Conduit**

191'

9150

146'

150'

232'

9220

362'

MNMPGR078  
MNMPGR013  
MNMPGR030

658'

648'

524'

210'

CENTENNIAL CROSSING

9973 9961 9949 9937 16402 16400 16428 16406 9905 9913 9901 16352