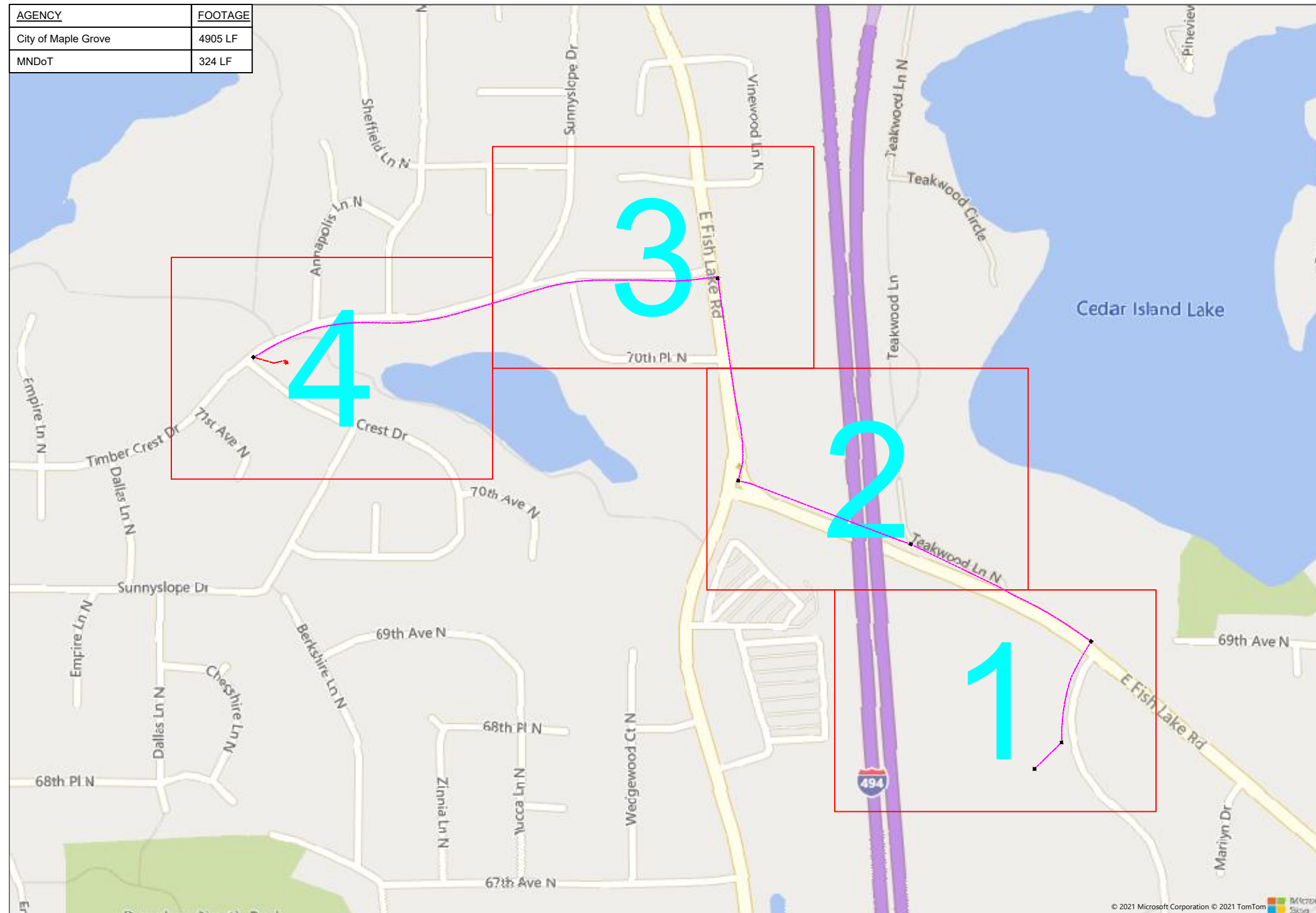


# 266750 Timber Crest to Water Tower

AGENCY	FOOTAGE
City of Maple Grove	4905 LF
MNDOT	324 LF



Timber Crest Dr, Maple Grove, MN



1" = -

Route	Timber Crest to Water Tower
City	Maple Grove
County	Hennepin
Filename	266750 Timber Crest to Water
Work Order #	266750



TRACKING	
Slaked By:	Brain Adams 7/29/2021
Drafted By:	WJT 7/29/2021
Project Manager	Aaron Zierden 218-347-3626
As-Built By:	-
Revision	-

Construction Totals	
Route Footage	5376'
Total Underground	5376'
Total Aerial	0'
Underground (New)	154'
Aerial (New)	0'
Overpull (Ex Duct)	5222'
Overlash (Ex Strand)	0'
Plow	0'
Bore	154'
New Vaults	1
New Peds	0

**GSOC**  
 GOPHER STATE ONE CALL  
 1-800-252-1116  
 www.gopherstateonecall.org

Prepared by:  
 **compass**  
 consultants inc.  
 Perham, MN 218-346-3600  
 TrustCompass.com

OVERVIEW

# Legend

## Fiber Linetypes

	Proposed Underground Fiber - Bore
	Proposed Underground Fiber - Plow
	Proposed UG Fiber in Existing Duct
	Existing Underground Fiber
	Proposed Aerial Fiber
	Proposed Aerial Overlash
	Existing Aerial Fiber
	Proposed Aerial Strand
	Existing Aerial Strand

## Other Linetypes

	Rail Road
	Fence
	Retaining Wall
	Storm Sewer
	Sanitary Sewer
	Gas Line
	Tele./Comm. Line
	Water Line
	Electric Line
	Street light/Traffic signal
	District Cooling
	District Heating
	Force Main
	Other Utility or Unknown
	Utility Easement

## Abbreviations

- CL - Center Line
- R/W - Right of Way
- BOC - Back of Curb
- FC - Front of Curb
- EOR - Edge of Road
- S/W - Sidewalk
- HH - Handhole
- MH - Manhole
- PRT - Preterminated Cable
- PRG - Pigtail Cable

## Symbols

	Proposed Handhole
	Existing Handhole
	Reference Handhole
	Manhole
	Proposed Cabinet
	Existing Cabinet
	Bore Pit
	Proposed Splice Point
	Existing Splice Point
	Power Pole
	Proposed Slack Coil
	Existing Slack Coil
	Proposed Anchor/Down Guy
	Existing Anchor/Down Guy
	Proposed Riser
	Existing Riser
	Aerial Bond
	Aerial Ground
	BM53T - Fiber Marker
	BM53 - Fiber Marker
	Proposed PED
	Existing PED
	Proposed Splice Case
	Existing Splice Case
	Street Light
	Traffic Light
	Traffic Light
	Transformer
	Hydrant
	Catch Basin
	Tree

Materials	
144 Fiber	6001
1.25" Duct	308
Vault (Medium)	1
Ground Rod	1



1" = -

Route	Timber Crest to Water Tower
City	Maple Grove
County	Hennepin
Filename	266750 Timber Crest to Water
Work Order #	266750



TRACKING	
Staked By:	Brain Adams 7/29/2021
Drafted By:	WJT 7/29/2021
Project Manager	Aaron Zierden 218-347-3626
As-Built By:	-
Revision	-

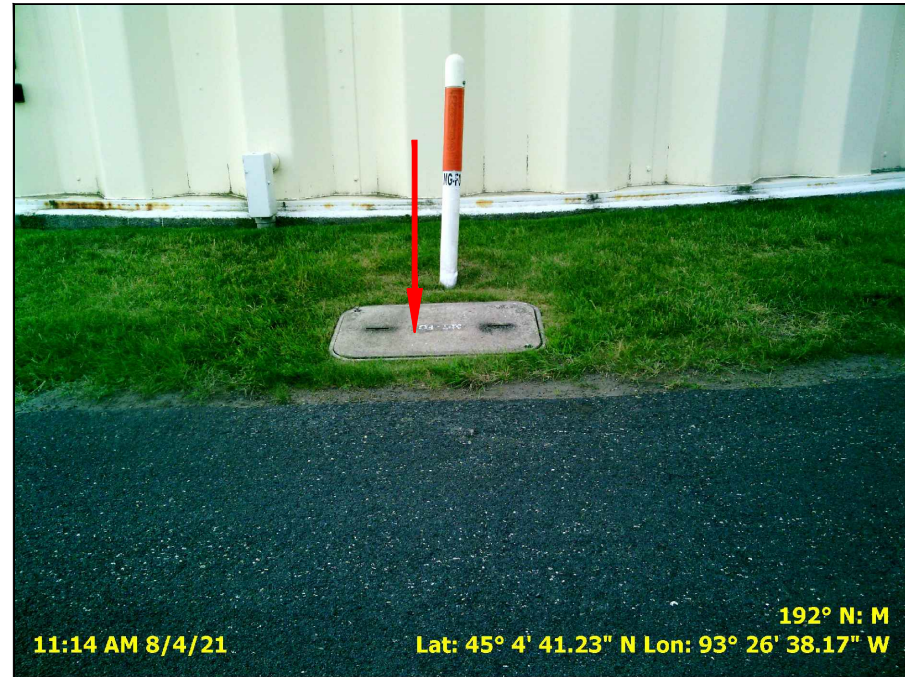
Construction Totals	
Route Footage	5376'
Total Underground	5376'
Total Aerial	0'
Underground (New)	154'
Aerial (New)	0'
Overpull (Ex Duct)	5222'
Overlash (Ex Strand)	0'
Plow	0'
Bore	154'
New Vaults	1
New Peds	0

**GSOC**  
 GOPHER STATE ONE CALL  
 1-800-252-1116  
 www.gopherstateonecall.org

Prepared by:  
**compass**  
 consultants inc.  
 Perham, MN 218-346-3600  
 TrustCompass.com

**LEGEND**

# Existing Access Points



City of Maple Grove HH-01



City of Maple Grove HH-02



City of Maple Grove HH-03



City of Maple Grove HH-04



1" = -

Route  
 Timber Crest to Water Tower  
 City  
 Maple Grove  
 County  
 Hennepin  
 Filename  
 266750 Timber Crest to Water  
 Work Order #  
 266750



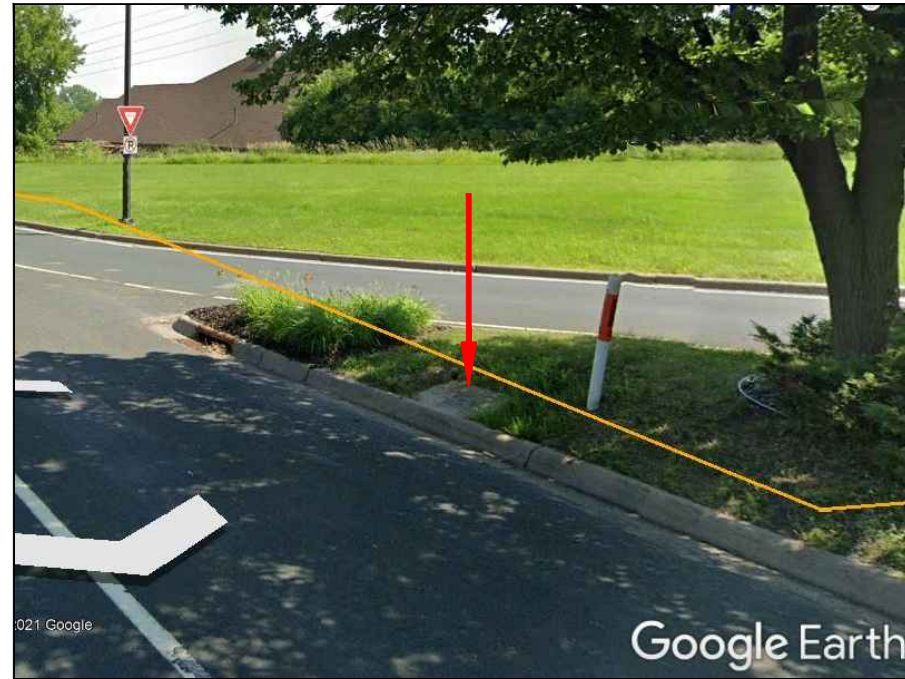
TRACKING	
Staked By:	Brain Adams 7/29/2021
Drafted By:	WJT 7/29/2021
Project Manager	Aaron Zierden 218-347-3626
As-Built By:	-
Revision	-

**GSOC**  
 GOPHER STATE ONE CALL  
 1-800-252-1116  
 www.gopherstateonecall.org

Prepared by:  
 **compass**  
 consultants inc.  
 Perham, MN 218-346-3600  
 TrustCompass.com

EXISTING AP

# Existing Access Points



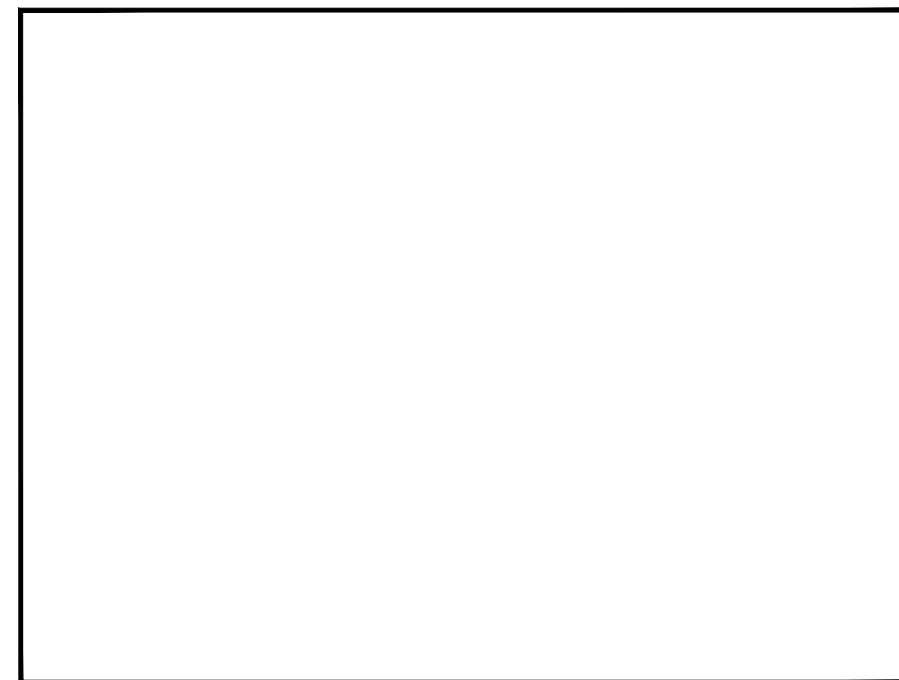
City of Maple Grove HH-05



City of Maple Grove HH-06



City of Maple Grove HH-07



-



1" = -

Route	Timber Crest to Water Tower
City	Maple Grove
County	Hennepin
Filename	266750 Timber Crest to Water
Work Order #	266750



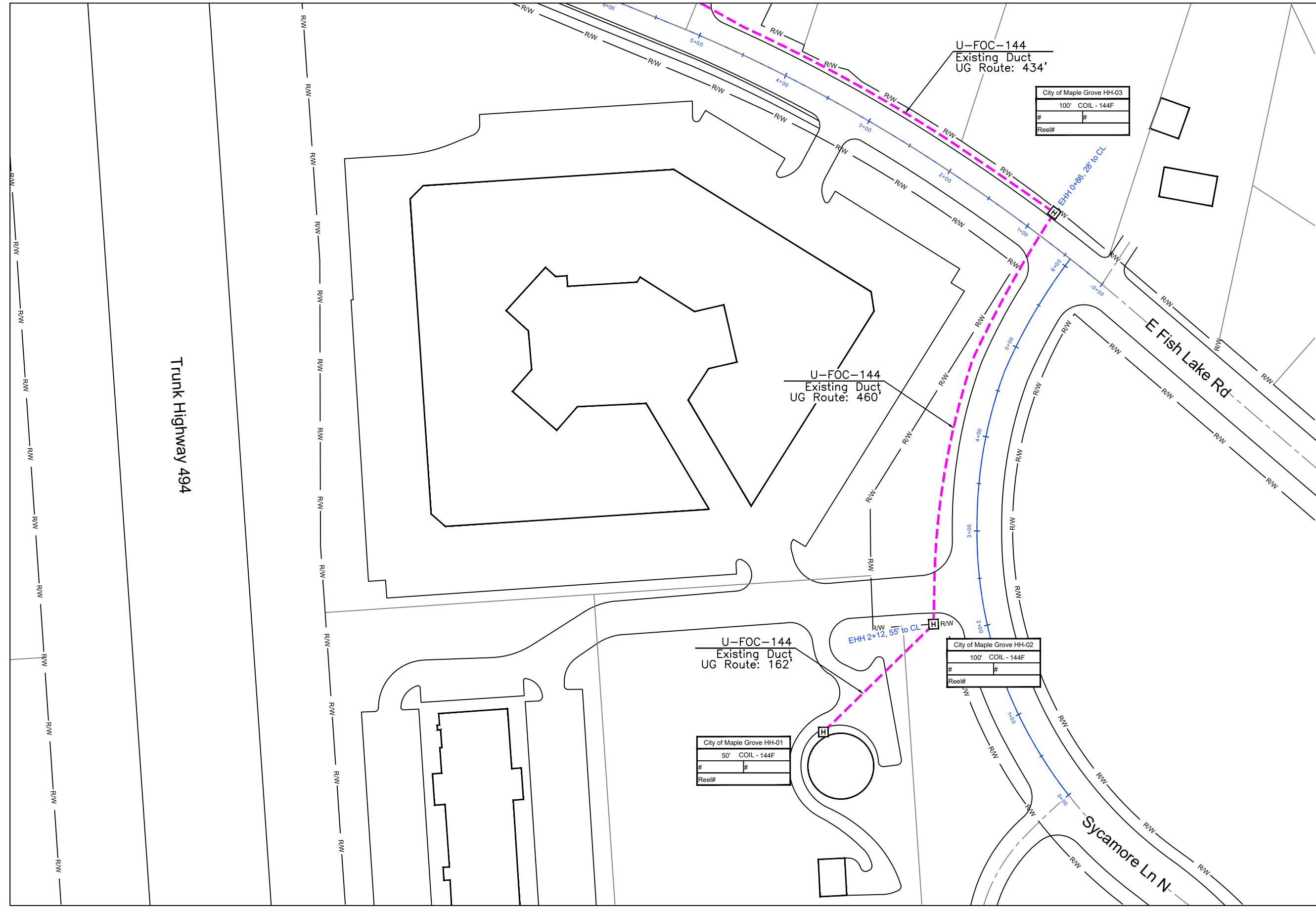
TRACKING	
Staked By:	Brain Adams 7/29/2021
Drafted By:	WJT 7/29/2021
Project Manager	Aaron Zierden 218-347-3626
As-Built By:	-
Revision	-

**GSOC**  
 GOPHER STATE ONE CALL  
 1-800-252-1116  
 www.gopherstateonecall.org

Prepared by:  
 **compass**  
 consultants inc.  
 Perham, MN 218-346-3600  
 TrustCompass.com

EXISTING AP

266750-02



Trunk Highway 494

U-FOC-144  
Existing Duct  
UG Route: 434'

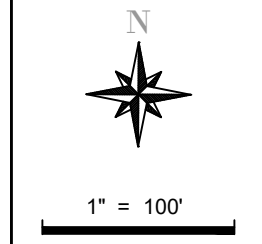
City of Maple Grove HH-03	
100' COIL - 144F	
#	#
Reel#	

U-FOC-144  
Existing Duct  
UG Route: 460'

U-FOC-144  
Existing Duct  
UG Route: 162'

City of Maple Grove HH-02	
100' COIL - 144F	
#	#
Reel#	

City of Maple Grove HH-01	
50' COIL - 144F	
#	#
Reel#	



Route	Timber Crest to Water Tower
City	Maple Grove
County	Hennepin
Filename	266750 Timber Crest to Water
Work Order #	266750



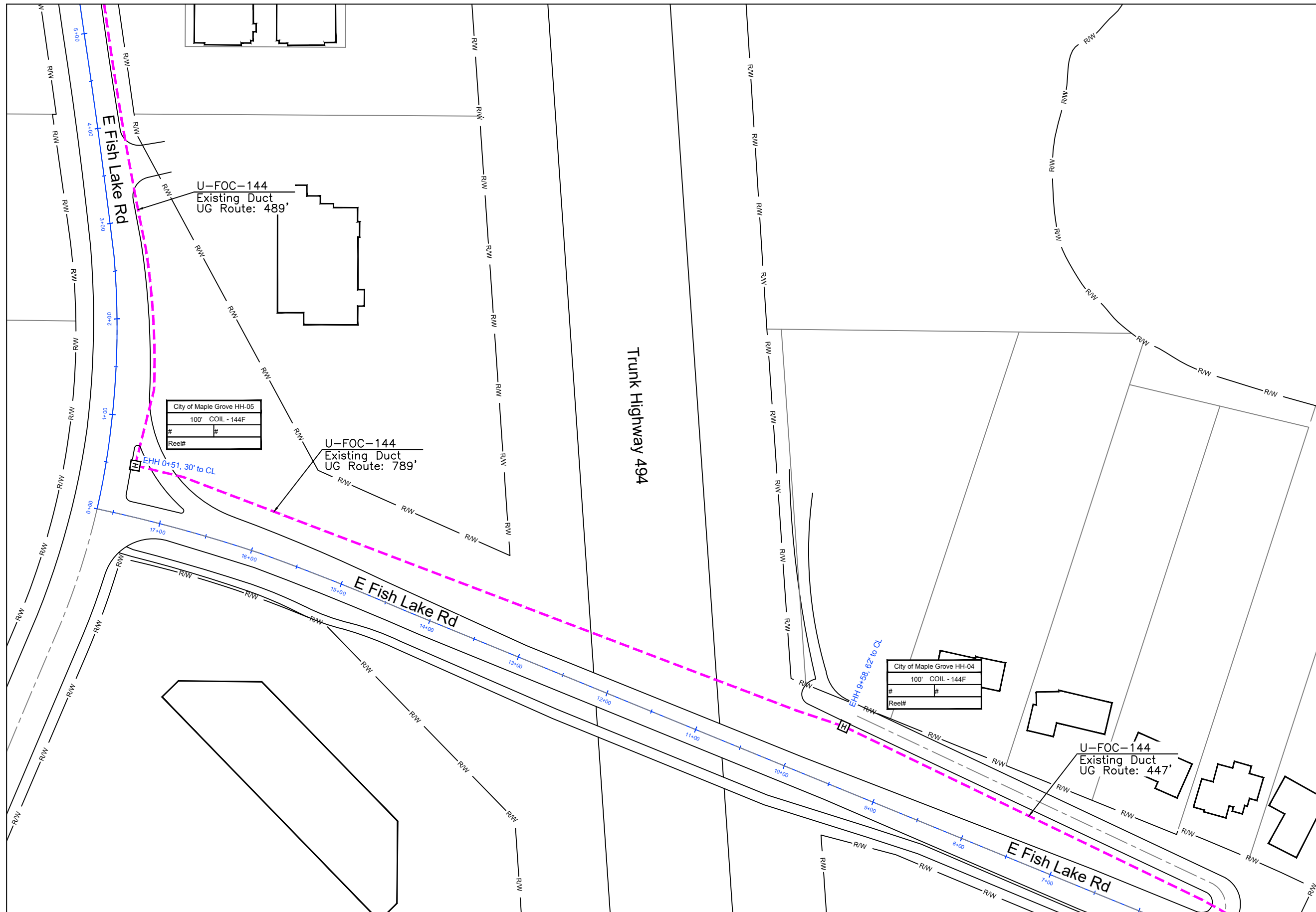
<b>TRACKING</b>	
Staked By:	Brain Adams 7/29/2021
Drafted By:	WJT 7/29/2021
Project Manager	Aaron Zierden 218-347-3626
As-Built By:	-
Revision	-

**GSOC**  
GOPHER STATE ONE CALL  
1-800-252-1116  
www.gopherstateonecall.org

Prepared by:  
 compass consultants inc.  
Perham, MN 218-346-3600  
TrustCompass.com

266750-01

266750-03



Trunk Highway 494

E Fish Lake Rd

E Fish Lake Rd

E Fish Lake Rd

U-FOC-144  
Existing Duct  
UG Route: 489'

U-FOC-144  
Existing Duct  
UG Route: 789'

U-FOC-144  
Existing Duct  
UG Route: 447'

City of Maple Grove HH-05	
100' COIL - 144F	
#	#
Reel#	

City of Maple Grove HH-04	
100' COIL - 144F	
#	#
Reel#	



1" = 100'

Route	Timber Crest to Water Tower
City	Maple Grove
County	Hennepin
Filename	266750 Timber Crest to Water
Work Order #	266750



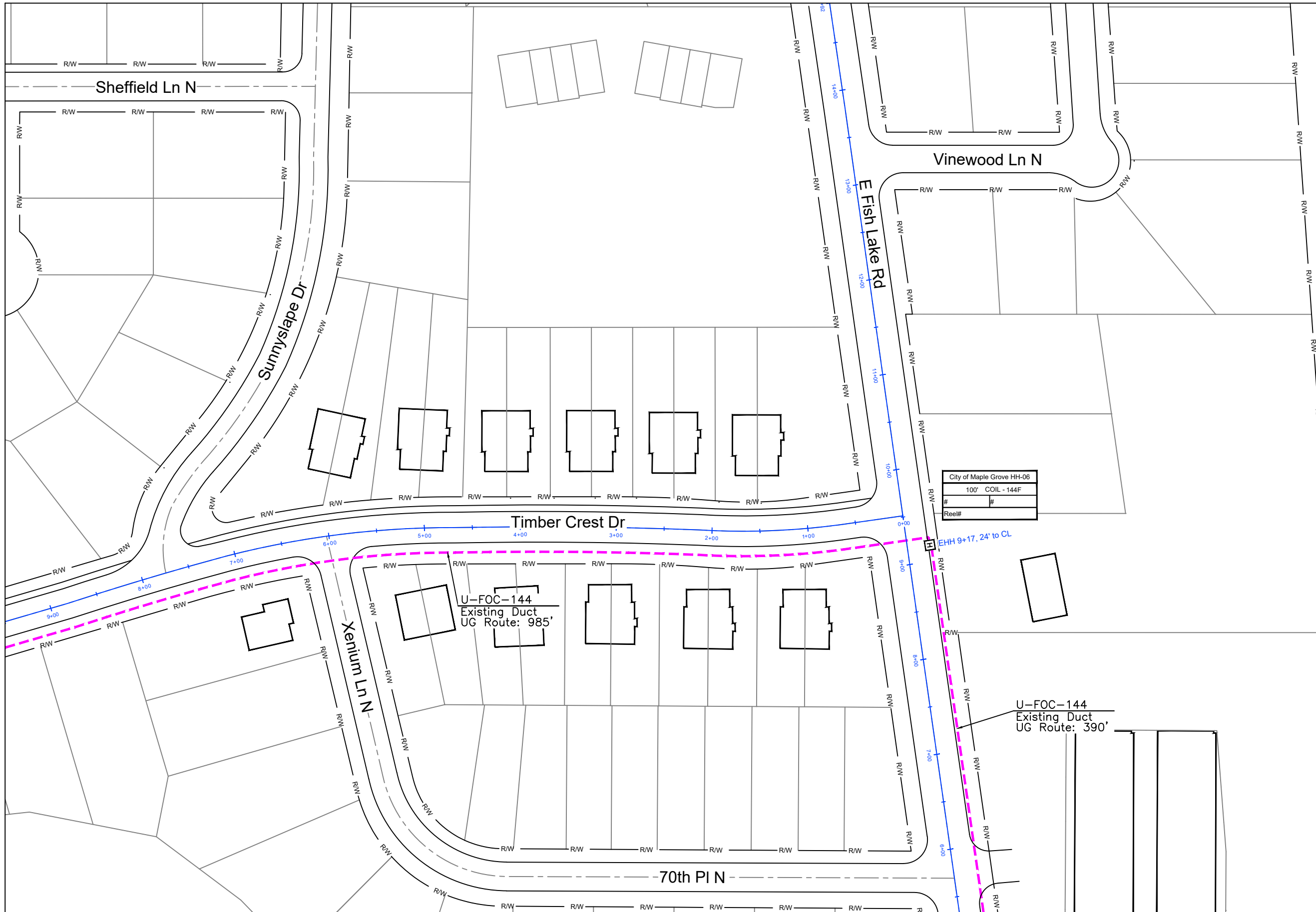
<b>TRACKING</b>	
Staked By:	Brain Adams 7/29/2021
Drafted By:	WJT 7/29/2021
Project Manager	Aaron Zierden 218-347-3626
As-Built By:	-
Revision	-

**GSOC**  
GOPHER STATE ONE CALL  
1-800-252-1116  
www.gopherstateonecall.org

Prepared by:  
 compass consultants inc.  
Perham, MN 218-346-3600  
TrustCompass.com

266750-02

266750-01



266750-04

266750-02



Route	Timber Crest to Water Tower
City	Maple Grove
County	Hennepin
Filename	266750 Timber Crest to Water
Work Order #	266750



TRACKING	
Staked By:	Brain Adams 7/29/2021
Drafted By:	WJT 7/29/2021
Project Manager	Aaron Zierden 218-347-3626
As-Built By:	-
Revision	-

City of Maple Grove HH-06	
100' COIL - 144F	
#	#
Reel#	

U-FOC-144  
Existing Duct  
UG Route: 985'

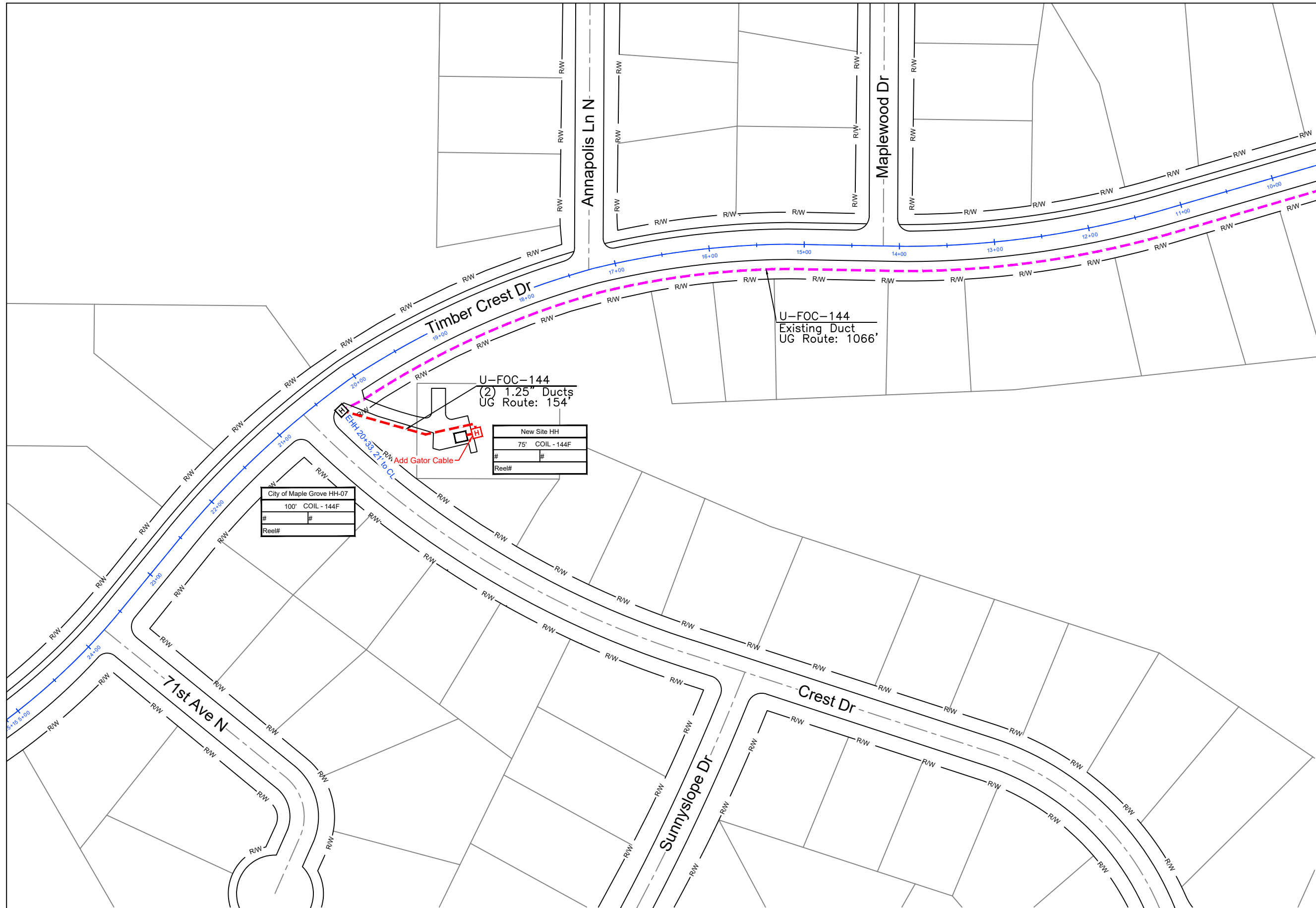
U-FOC-144  
Existing Duct  
UG Route: 390'

EHH 9+17, 24' to CL

**GSOC**  
GOPHER STATE ONE CALL  
1-800-252-1116  
www.gopherstateonecall.org

Prepared by:  
 compass  
consultants inc.  
Perham, MN 218-346-3600  
TrustCompass.com

266750-03



1" = 100'

Route  
Timber Crest to Water Tower  
City  
Maple Grove  
County  
Hennepin  
Filename  
266750 Timber Crest to Water  
Work Order #  
266750



TRACKING

Staked By:  
Brain Adams 7/29/2021  
Drafted By:  
WJT 7/29/2021  
Project Manager  
Aaron Zierden 218-347-3626  
As-Built By:  
- -  
Revision  
- -

266750-03

GSOC

GOPHER STATE ONE CALL  
1-800-252-1116  
www.gopherstateonecall.org

Prepared by:  
 compass  
consultants inc.  
Perham, MN 218-346-3600  
TrustCompass.com

266750-04