

Place Temp Conduit

TIME WARNER TELECOM

5480 Fetti Rd
 Minnetonka, MN 55343
 952.351.2300

LOCATE ALL UTILITIES PRIOR TO CONSTRUCTION
 CALL GOPHER STATE ONE @ 651-454-0002

PROPRIETARY
 INFORMATION NOT FOR DISCLOSURE
 THIS SET OF PLANS CONTAINS CONFIDENTIAL OR
 PROPRIETARY INFORMATION AND THE RECIPIENT MUST
 NOT DISCLOSE, COPY, RE-CREATE OR DISSEMINATE THE PLANS
 OR THE INFORMATION CONTAINED THEREIN, EITHER DIRECTLY
 OR INDIRECTLY TO OTHER PARTIES OR INDIVIDUALS WITHOUT
 WRITTEN OR EXPRESS PERMISSION FROM TIME WARNER INC.

ComTek Engineering Inc.
 4435 W 77TH ST
 EDINA, MN 55435
 Office: 952-960-2215
 Fax: 952-960-2216
 Email: contekeng@ncleodusa.net

GSOC#

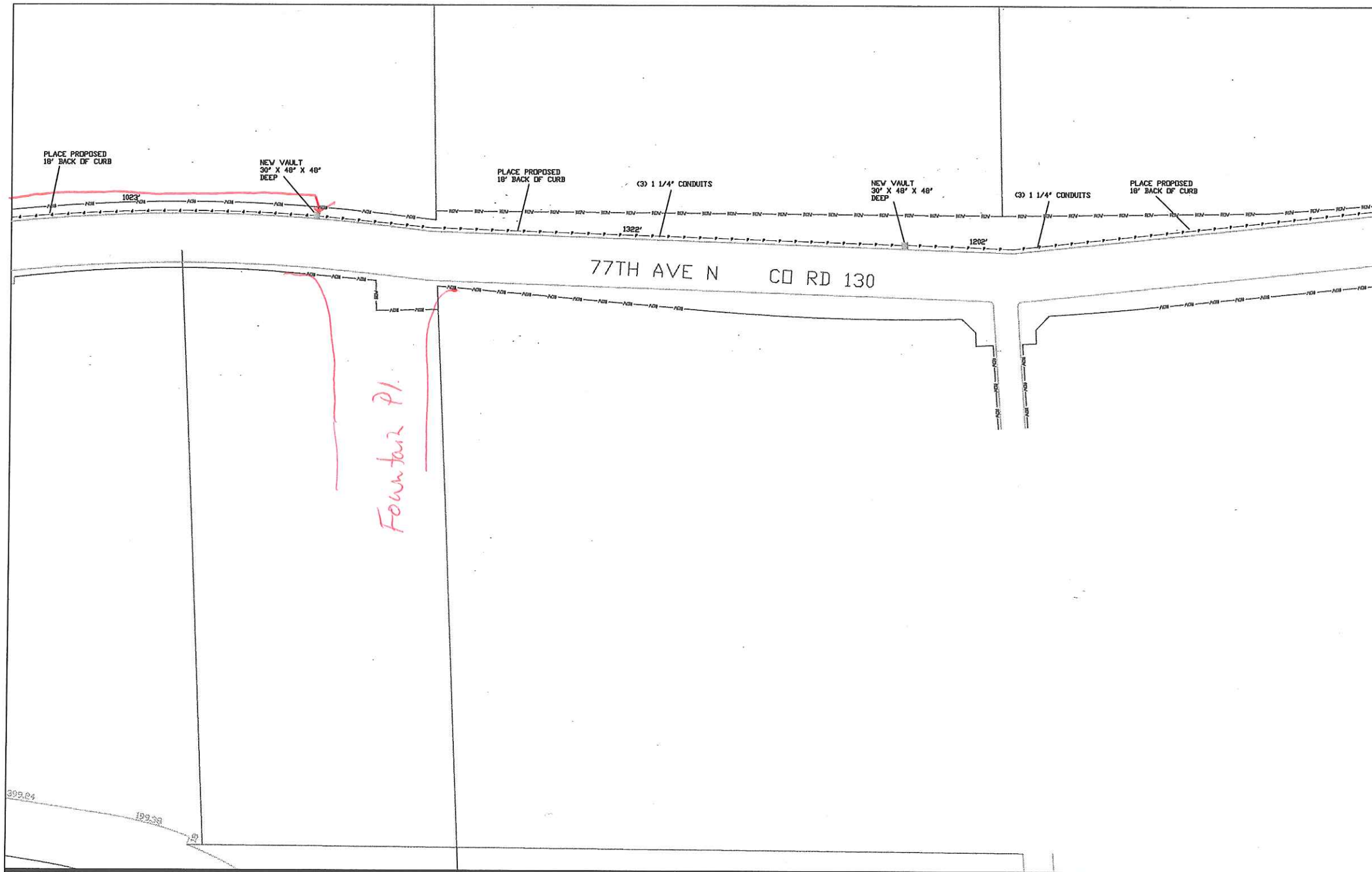
	15	14
	16	

UNDERGROUND

CITY OF MAPLE GROVE
 HENNEPIN COUNTY

FILE NAME: MAPLEGROVE RING	MAPLEGROVE RING
DATE: 3/9/06	DWG. NO. 15 OF 27





Fountain Pl.

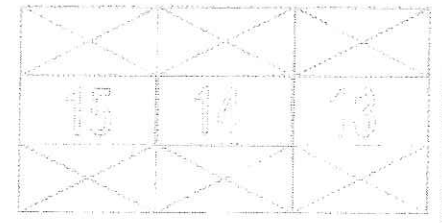
THE WARRIOR UTIL.COM

5480 Feltl Rd
 Minnetonka, MN 55343
 952.351.2300

LOCATE ALL UTILITIES PRIOR TO CONSTRUCTION
 CALL GOPHER STATE ONE @ 651-454-0002

PROPRIETARY
 INFORMATION NOT FOR DISCLOSURE
 THIS SET OF PLANS CONTAINS CONFIDENTIAL OR
 PROPRIETARY INFORMATION AND THE RECIPIENT MUST
 NOT DISCLOSE, COPY, RE-CREATE OR DISSEMINATE THE PLANS
 OR THE INFORMATION CONTAINED THEREIN, EITHER ORALLY
 OR IN WRITING, TO OTHER ENTITIES OR INDIVIDUALS WITHOUT
 WRITTEN OR EXPRESS PERMISSION FROM THE WARRIOR INC.

GSOC#
 4435 W 77TH ST
 EDINA, MN 55435
 Office: 952-960-2215
 Fax: 952-960-2216
 Email: contekeng@ncleodusa.net



UNDERGROUND

MAPLE GROVE
 HENNEPIN COUNTY

FILE NAME:
 IMPLEMENTATION
 DATE: 3/9/01

DWG. NO.

