

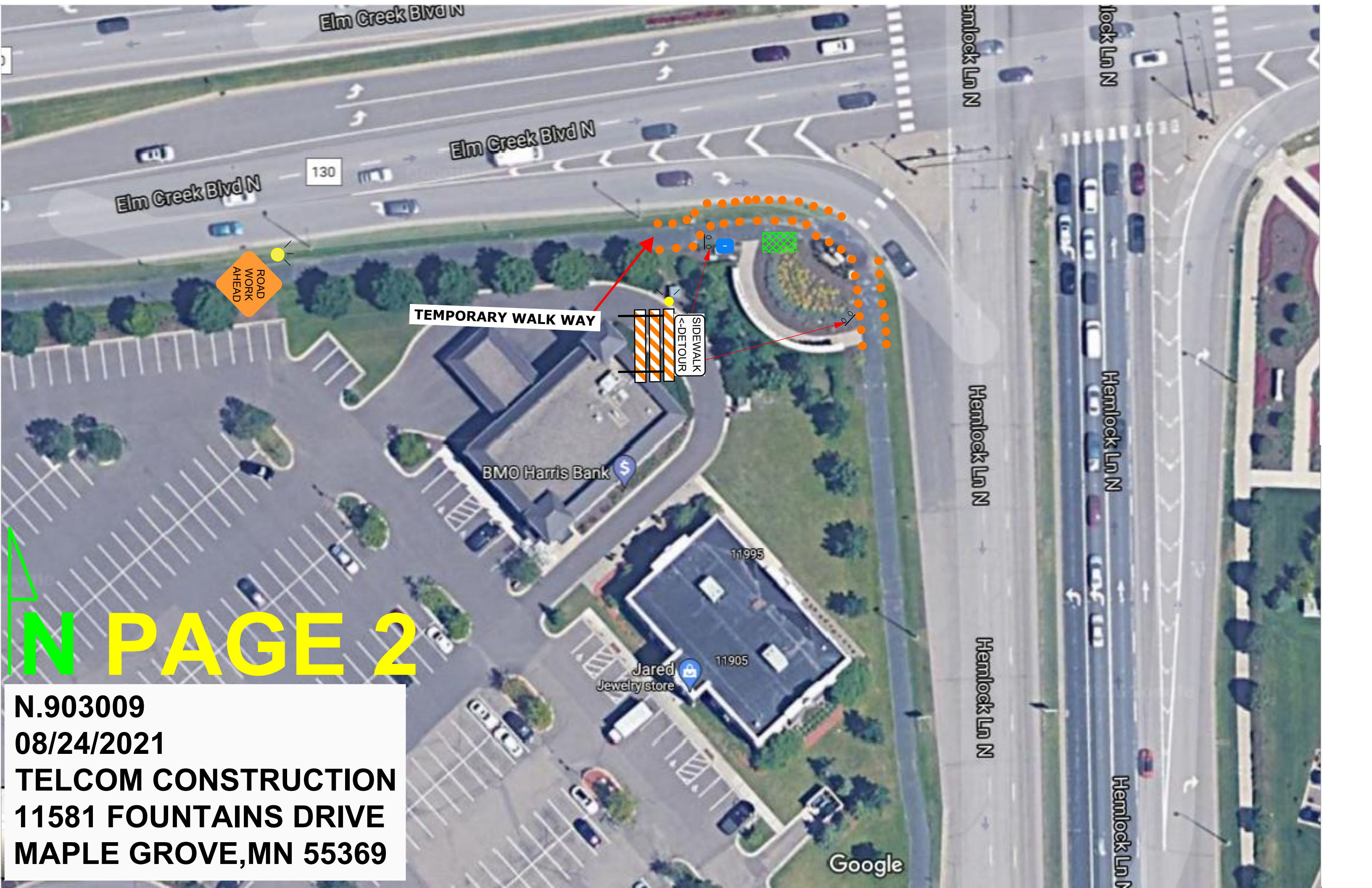
TEMPORARY WALK WAY

**SIDE WALK
<- DETOUR**

**TRAFFIC CONTROL PLAN
FOR HENNEPIN COUNTY**

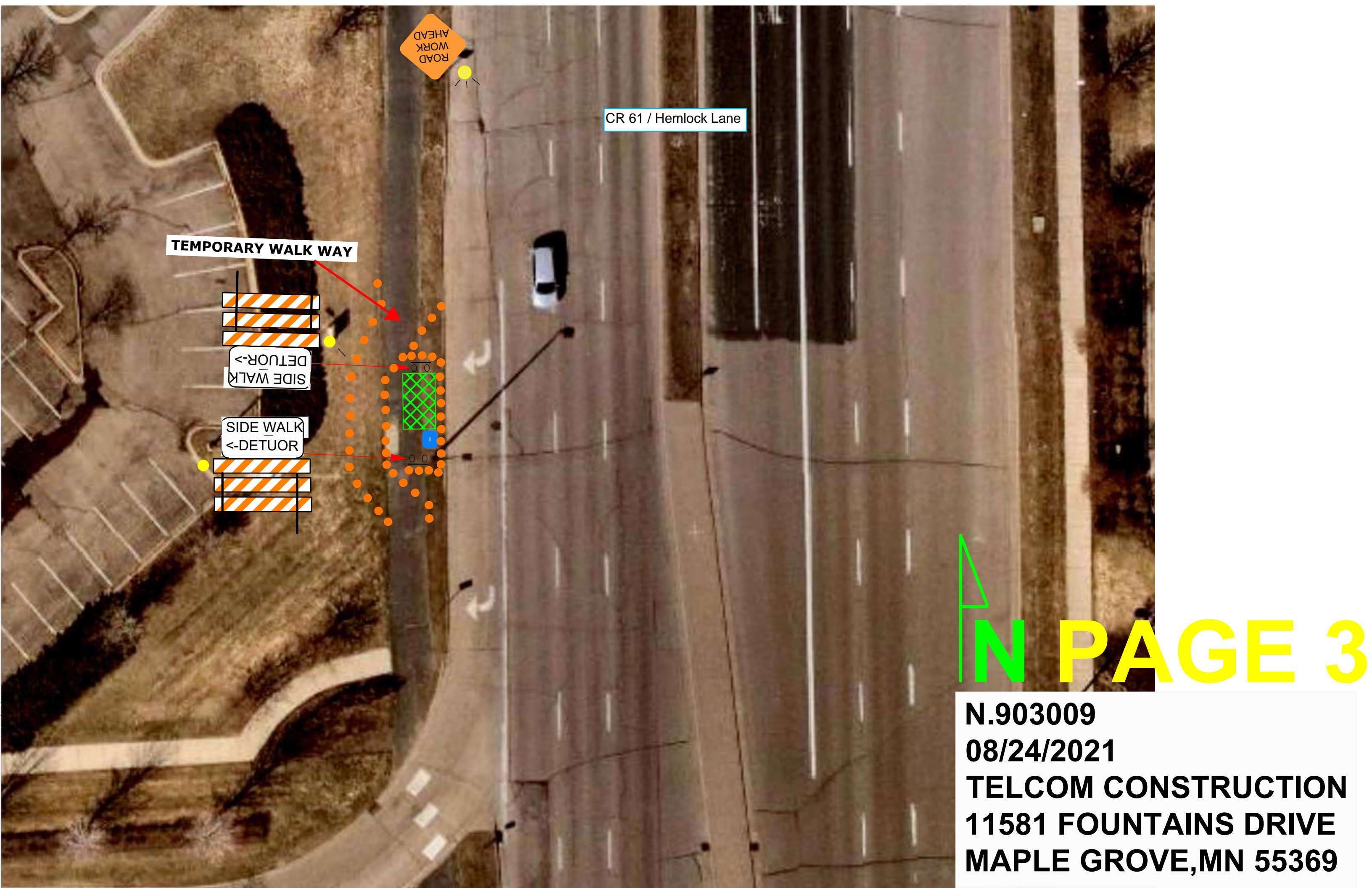
N PAGE 1

**N.903009
08/24/2021
TELCOM CONSTRUCTION
11581 FOUNTAINS DRIVE
MAPLE GROVE, MN 55369**



N PAGE 2

**N.903009
08/24/2021
TELCOM CONSTRUCTION
11581 FOUNTAINS DRIVE
MAPLE GROVE, MN 55369**



ROAD WORK AHEAD

CR 61 / Hemlock Lane

TEMPORARY WALK WAY

SIDE WALK
<-DETUOR

SIDE WALK
->DETUOR

N PAGE 3

**N.903009
08/24/2021
TELCOM CONSTRUCTION
11581 FOUNTAINS DRIVE
MAPLE GROVE, MN 55369**