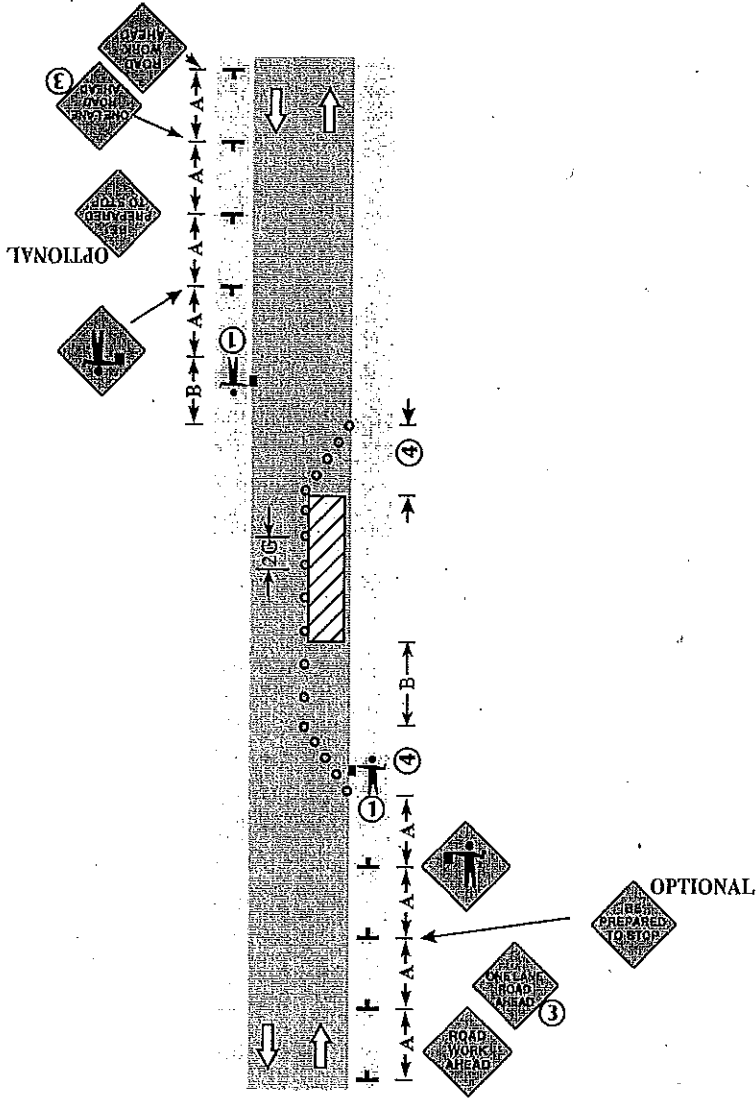


NOTES:

1. The approach sight distance to the flagger shall be at least the Decision Sight Distance.
2. During nighttime operations, illuminate both the flaggers and the work space with portable lights.
3. The ONE LANE ROAD AHEAD sign may be omitted when the posted speed limit is 40 mph or less.
4. The two-way taper should be 50 feet and using 5 equally spaced channelizing devices.



**LANE CLOSURE, TWO FLAGGERS
TWO LANE TWO WAY ROAD**

12 HOURS or LESS

6K-13

LAYOUT 13