



MCImetro

ACCESS TRANSMISSION SERVICES CORP
D/B/A VERIZON ACCESS TRANSMISSION
OUTSIDE PLANT CONSTRUCTION
FIBER OPTIC CABLE ROUTE

MAPLE GROVE - AVERY PARK HH RELOCATION

SITE CODE: HENNMN

MAPLE GROVE / JEFFERSON HWY & 96TH AVE N / HH RELOCATION
MAPLE GROVE, MN

PROJECT STATUS: ISSUED FOR PERMITTING
STATUS DATE: 06/09/2021



INDEX SHEET

- 1..... COVER SHEET
- 2..... INDEX SHEET
- 3..... LOCATION MAP
- 4..... CONTACT SHEET
- 5..... GENERAL NOTES/CLARIFICATION SHEET
- 6..... SYMBOLS KEY
- 7..... PROJECT CLARIFICATION SUMMARY/BOM
- 8..... CONSTRUCTION DRAWINGS
- A1..... SINGLE LINE DIAGRAM
- T1-T6..... MCI TYPICALS
- ADDITIONAL 3RD PARTY DOCUMENTATION

PROJECT: AVERY PARK

JEFFERSON HWY

MAPLE GROVE, MN

CLARIFICATION NO.	QUANTITY

MCImetro
ACCESS TRANSMISSION SERVICES, LLC
MCI
OUTSIDE PLANT CONSTRUCTION
TITLE: FIBER OPTIC CABLE ROUTE
MAPLEGROVE_AVERYPARK

DATE: 6/9/21

ENGINEER: SJH

DRAWN BY: SJH

REVISIONS

DATE	DESCRIPTION	INITIAL
06/09/21	CONST PKG	SJH

EXCEPT AS MAY BE OTHERWISE PROVIDED BY CONTRACT, THESE DRAWINGS AND SPECIFICATIONS SHALL REMAIN THE PROPERTY OF MCI COMMUNICATIONS SERVICES, INC., BOTH BEING ISSUED IN STRICT CONFIDENCE AND SHALL NOT BE REPRODUCED, COPIED, OR USED FOR ANY PURPOSE WITHOUT SPECIFIC WRITTEN PERMISSION.

SCALE

HORIZONTAL: NTS

VERTICAL: NTS

MP _____ TO MP _____

SHEET 2 OF 8

FILE: MAPLEGROVE_AVERYPARK.DWG

LOCATION MAP

EXISTING MCI UG



PROPOSED MCI UG

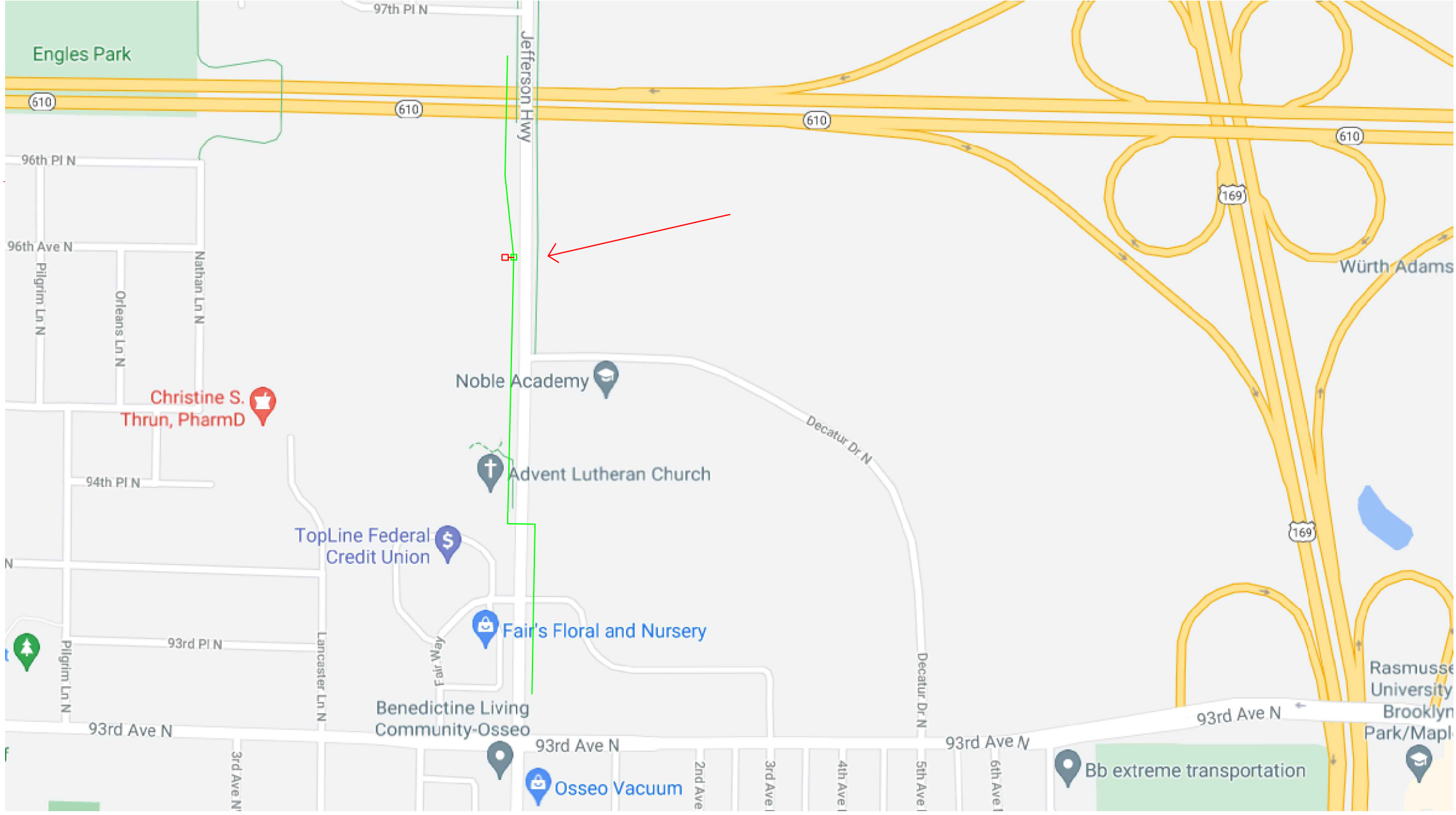


PROJECT: AVERY PARK

JEFFERSON HWY

MAPLE GROVE, MN

CLARIFICATION NO.	QUANTITY



MCImetro
ACCESS TRANSMISSION SERVICES, LLC

MCI

OUTSIDE PLANT CONSTRUCTION
TITLE: FIBER OPTIC CABLE ROUTE
MAPLEGROVE_AVERYPARK

DATE: 6/9/21

ENGINEER: SJH

DRAWN BY: SJH

REVISIONS

DATE	DESCRIPTION	INITIAL
06/09/21	CONST PKG	SJH

EXCEPT AS MAY BE OTHERWISE PROVIDED BY CONTRACT, THESE DRAWINGS AND SPECIFICATIONS SHALL REMAIN THE PROPERTY OF MCI COMMUNICATIONS SERVICES, INC. BOTH BEING ISSUED IN STRICT CONFIDENCE AND SHALL NOT BE REPRODUCED, COPIED, OR USED FOR ANY PURPOSE WITHOUT SPECIFIC WRITTEN PERMISSION.

SCALE

HORIZONTAL: NTS
 VERTICAL: NTS
 MP ____ TO MP ____
 SHEET 3 OF 8
 FILE: MAPLEGROVE_AVERYPARK.DWG

CONTACT SHEET



PROJECT: AVERY PARK
JEFFERSON HWY
MAPLE GROVE, MN

CLARIFICATION NO.	QUANTITY
-------------------	----------

VERIZON BUSINESS

OUTSIDE PLANT ENGINEERING:

PROJECT ENGINEER: GREG ALLEN 612-619-9602
1200 WASHINGTON AVE
MINNEAPOLIS, MN 55401

SENIOR PROJECT ENGINEER: DAN SCHMIDT 612-221-7997
1200 WASHINGTON AVE
MINNEAPOLIS, MN 55401

OUTSIDE PLANT CONSTRUCTION:

PROJECT SUPERVISOR: TBD
FIELD CONST. SUPERINTENDENT:
MANAGER:

RIGHT-OF-WAY:

AGENT:
MANAGER:

CONTRACTS:

OTHERS:

PROGRAM MANAGER:
LIGHTWAVE ENGINEER:
CIVIL ENGINEER:
TERMINAL CONST. REP.:
SPLICING MANAGER:
TSO MANAGER:

ENGINEERING CONTRACTOR

NAME OF FIRM: MI-TECH SERVICES, INC.
PROJECT MANAGER: TIM ERICKSON (612)518-3008

ENG. / DESIGNER: STEVEN J HOTVEDT (612)437-0172

CONSTRUCTION CONTRACTOR

NAME OF FIRM: TBD
PROJECT COORDINATOR: TBD

PROJECT SUPERVISOR: TBD

RAILROADS

UTILITIES

AT&T TRANSMISSION (612) 344-3327
CENTURYLINK (855) 742-6062
CENTER POINT ENERGY (800) 778-9140
COMCAST (800) 762-0592
CITY OF MINNEAPOLIS WATER (612) 673-5600
CITY OF MINNEAPOLIS TRAFFIC (612) 673-5600
CITY OF MINNEAPOLIS SEWER (612) 673-5600
DISTRICT ENERGY (651) 297-8955
EXTENET SYSTEMS INC (800) 778-9140
HENNEPIN COUNTY PUBLIC WORKS (406) 541-9571
LEVEL 3 COMMUNICATIONS (877) 366-8344
METRO TRANSIT (612) 349-7547
METRO WASTE COMMISSION (651) 602-4511
MNDOT (651) 366-5750
QWEST COMMUNICATIONS (800) 283-4237
ROGERS COMMUNICATIONS (877) 459-2690
SPRINT/LONG DISTANCE (800) 521-0579
ST PAUL REGIONAL WATER (651) 266-6868
ST PAUL SEWER (651) 266-9850
ST PAUL TRAFFIC AND LIGHTING (651) 266-9777
ST PAUL PARKS (651) 632-5129
WINDSTREAM COMMUNICATIONS (800) 289-1901
XCEL ENERGY (800) 848-7558
ZAYO BANDWIDTH (888) 267-1063
ZAYO ENTERPRISE NETWORKS LLC (218) 346-5500

CITY GOVERNMENT

CITY OF MAPLE GROVE
KELLY MATZKE
612-968-3615
12800 ARBOR LAKES PARKWAY
MAPLE GROVE, MN 55369

COUNTY GOVERNMENT

STATE GOVERNMENT

FEDERAL GOVERNMENT

CLARIFICATION NO.	QUANTITY
-------------------	----------

MCI metro
ACCESS TRANSMISSION SERVICES, LLC
MCI
OUTSIDE PLANT CONSTRUCTION
TITLE: FIBER OPTIC CABLE ROUTE
MAPLE GROVE_AVERY PARK

DATE: 6/9/21

ENGINEER: SJH

DRAWN BY: SJH

REVISIONS

DATE	DESCRIPTION	INITIAL
06/09/21	CONST PKG	SJH

EXCEPT AS MAY BE OTHERWISE PROVIDED BY CONTRACT, THESE DRAWINGS AND SPECIFICATIONS SHALL REMAIN THE PROPERTY OF MCI COMMUNICATIONS SERVICES, INC., BOTH BEING ISSUED IN STRICT CONFIDENCE AND SHALL NOT BE REPRODUCED, COPIED, OR USED FOR ANY PURPOSE WITHOUT SPECIFIC WRITTEN PERMISSION.

SCALE

HORIZONTAL: NTS

VERTICAL: NTS

MP _____ TO MP _____

SHEET 4 **OF** 8

FILE: MAPLE GROVE_AVERY PARK.DWG



PROJECT: AVERY PARK

JEFFERSON HWY

MAPLE GROVE, MN

CLARIFICATION NO. QUANTITY

Table with 2 columns: CLARIFICATION NO., QUANTITY. Multiple empty rows.

MCI metro ACCESS TRANSMISSION SERVICES, LLC OUTSIDE PLANT CONSTRUCTION TITLE: FIBER OPTIC CABLE ROUTE MAPLEGROVE_AVERYPARK

DATE: 6/9/21

ENGINEER: SJH

DRAWN BY: SJH

REVISIONS

Table with 3 columns: DATE, DESCRIPTION, INITIAL. Row 1: 06/09/21, CONST PKG, SJH

EXCEPT AS MAY BE OTHERWISE PROVIDED BY CONTRACT, THESE DRAWINGS AND SPECIFICATIONS SHALL REMAIN THE PROPERTY OF MCI COMMUNICATIONS SERVICES, INC. BOTH BEING ISSUED IN STRICT CONFIDENCE AND SHALL NOT BE REPRODUCED, COPIED, OR USED FOR ANY PURPOSE WITHOUT SPECIFIC WRITTEN PERMISSION.

SCALE

HORIZONTAL: NTS

VERTICAL: NTS

MP TO MP

SHEET 5 OF 8

FILE: MAPLEGROVE_AVERYPARK.DWG

GENERAL NOTES

1. VERIZON BUSINESS COMPRISES THE FOLLOWING OPERATING ENTITIES:

- MCI COMMUNICATIONS SERVICES, INC.
- MCI METRO ACCESS TRANSMISSION SERVICES, LLC
- MCI METRO ACCESS TRANSMISSION SERVICES OF VIRGINIA, INC.
- MCI METRO ACCESS TRANSMISSION SERVICES OF MASSACHUSETTS, INC.
- METROPOLITIAN FIBER SYSTEMS OF NEW YORK, INC.

2. ALL WORK TO BE PERFORMED IN STRICT ACCORDANCE WITH THE APPLICABLE CODES OR REQUIREMENTS OF ANY REGULATING GOVERNMENTAL AGENCY, VERIZON BUSINESS AND THE RIGHT-OF-WAY GRANTOR.

3. LOCATIONS OF SOME OF THE PHYSICAL FEATURES WERE OBTAINED FROM DATED RAILROAD EVALUATION MAPS OR OTHER DRAWINGS AND MAY NOT BE AS SHOWN OR DEPICTED ON THESE DRAWINGS.

4. UNDERGROUND UTILITIES HAVE BEEN PLOTTED FROM AVAILABLE RECORDS AND FIELD OBSERVATIONS BUT ARE NOT NECESSARILY EXACT. THEREFORE, UTILITY LOCATIONS WILL BE VERIFIED AT LEAST 100 FEET IN ADVANCE OF TRENCHING OR PLOWING, SO THAT CHANGES IN CABLE PLACEMENT CAN BE MADE IN THE EVENT OF CONFLICT.

5. ANY AND ALL IMPROVEMENTS, SUCH AS ASPHALT OR CONCRETE PAVEMENT, CURBS, GUTTERS, WALKS, DRAINAGE DITCHES, EMBANKMENTS, SHRUBS, TREES, GRASS SOD, ETC., IF DAMAGED, SHALL BE RESTORED TO ORIGINAL CONDITION.

6. EQUIPMENT TYPES SPECIFIED HEREIN (IE: "BACKHOE", SWAMP PLOW" ETC.) ARE SUGGESTIONS ONLY AND ARE NOT INTENDED AS REQUIREMENTS.

7. SHORING OF EXCAVATIONS AND TRENCHES IN ACCORDANCE WITH OSHA REGULATIONS IS MANDATORY.

8. BURIED CABLE MARKERS WILL BE PLACED AT ALL UNDERGROUND UTILITY LOCATIONS AND ALL OTHER LOCATIONS IN ACCORDANCE WITH THE CONSTRUCTION DRAWINGS AND THE OUTSIDE PLANT HANDBOOK.

9. ALL 2" ID CONDUIT WILL BE HDPE, OR AS SPECIFIED.

10. UNDERGROUND CONDUIT WILL BE PLACED AT 36" MINIMUM COVER UNLESS OTHERWISE SPECIFIED ON THE CONSTRUCTION DRAWINGS.

CLARIFICATION NOTES

- 1. STATION
2. LOCATION
3. CLARIFICATION NO. AND MINIMUM COVER
4. QUANTITY LINEAR FOOTAGE/SQUARE FOOTAGE, SIZE OF MANHOLE/HANDHOLE SIZE OF PULL/SPLICE BOX, DIMENSION OF WALL, HEIGHT/CLASS/TYPICAL OF POLE
5. TYPICAL DRAWING NO. AND TYPICAL DETAIL DRAWING NUMBER
6. PLANT ACCOUNTING CODE
7. SPECIFIED CONDUIT, HANDHOLE/MANHOLE NO., SPECIFIED PURPOSE AND MATERIAL, BRIDGE NO. AND RAILROAD STATION, MATERIAL, POLE NO.

ADDENDUM NOTES

CLARIFICATION NOTES (CONTINUED)

Table with 3 columns: Clarification No., Quantity, Description. Includes entries for Jack and Dry Bore Conduit, Place Conduit, Attach Conduit to Wall, Pull Cable, Direct Bury Cable, Jetting Conduit, Place Buried Cable Markers.

GENERAL NOTES

- 1. CONTRACTOR MUST OBTAIN LOCATES PRIOR TO DISTURBING THE GROUND.
2. CONTRACTOR MUST HAVE A COPY OF THE APPROVED PERMIT FROM THE APPROPRIATE AGENCY ON THE JOBSITE AT ALL TIMES.
3. ALL CABLE WILL BE PLACED AT STANDARD MINIMUM DEPTH. (MCI STANDARD IS 48" DEEP UNLESS OTHERWISE DIRECTED BY A MCI REPRESENTATIVE.)
4. ANY LANDSCAPING WILL BE REPLACED TO EQUAL OR BETTER THAN THAT WHICH EXISTED PRIOR TO WORK.
5. PROJECT SITE WILL BE PROPERLY SECURED PRIOR TO THE END OF EACH DAY.
6. ALL WORK IS TO BE IN ACCORDANCE WITH ALL AUTHORITIES HAVING JURISDICTION IN THE WORK ZONE.
7. CONTRACTORS ARE ADVISED TO CONTACT MCI FOR ANY ADDITIONAL INFORMATION OR CLARIFICATION CONCERNING SCOPE OF WORK OR THE REQUIREMENTS NECESSARY FOR PROJECT COMPLETION.
8. CONTRACTOR IS RESPONSIBLE TO FIELD VERIFY ALL DIMENSIONS, QUANTITIES AND EXISTING CONDITIONS PRIOR TO CONSTRUCTION. IF A SIGNIFICANT CHANGE TO THE RUNNING LINE IS NEEDED, PLEASE CONTACT YOUR MCI REPRESENTATIVE BEFORE PROCEEDING.
9. BEFORE CONSTRUCTION BEGINS, CONTRACTOR SHALL TAKE APPROPRIATE PRECAUTIONS TO AVOID ANY POTENTIAL OBSTRUCTIONS PRIOR TO PROCEEDING WITH WORK.
10. NO CONSTRUCTION ON PRIVATE PROPERTY WILL COMMENCE UNTIL APPROVAL IS GIVEN BY THE APPROPRIATE MCI EMPLOYEE.
11. CONTRACTOR SHALL NOT PROCEED WITH WORK UNTIL THEY HAVE RECEIVED A PURCHASE ORDER AND HAVE BEEN DIRECTED TO DO SO BY AN AUTHORIZED MCI REPRESENTATIVE.
12. CONTRACTOR SHALL NOT EXCEED THE PURCHASE ORDER VALUE WITHOUT AUTHORIZATION IN WRITING FROM THE APPROPRIATE MCI REPRESENTATIVE.
13. AS-BUILTS WILL BE REQUIRED FOR EACH PROJECT INCLUDING CABLE FOOTAGE SEQUENTIALS AT EVERY ACCESS POINT, SLACK LOOP, SPLICE LOCATION, POLE AND TERMINATION POINT. CONTRACTOR SHALL PROVIDE NOTES OF ALL CHANGES IN DEPTHS, RUNNING LINES, MH/HH LOCATIONS, AND ANY OTHER APPLICABLE NOTES TO DEPICT THE WORK THAT TOOK PLACE. NOTE: ALL MAJOR CHANGES NEED TO BE PRE-APPROVED BY AN AUTHORIZED MCI EMPLOYEE PRIOR TO STARTING THE WORK.
14. THE SUBSURFACE UTILITY INFORMATION IN THIS PLAN IS UTILITY QUALITY LEVEL D. THIS UTILITY QUALITY LEVEL WAS DETERMINED ACCORDING TO THE GUIDELINES OF CI/ASCE 38-02, ENTITLED STANDARD GUIDELINES FOR THE COLLECTION AND DEPICTION OF EXISTING SUBSURFACE UTILITY DATA. IT SHALL BE THE CONTRACTORS RESPONSIBILITY TO UTILIZE THE GOPHER STATE ONE CALL EXCAVATION NOTICE SYSTEM REQUIRED MN STATUTE, CHAPTER 216D FOR ALL UNDERGROUND UTILITY LOCATIONS.

PROJECT: AVERY PARK

JEFFERSON HWY

MAPLE GROVE, MN

CLARIFICATION NO. QUANTITY

SYMBOLS KEY

	EXISTING	PROPOSED
BURIED CABLE		
AERIAL CABLE		
SUBMARINE CABLE		
FOGWIRE CABLE		
DIRECT BURIED HDPE		
PVC OR SPLIT PVC CONDUIT		
BSP/GSP OR SPLIT BSP/GSP CONDUIT		
STEEL CASING		
REMOVE AND RESTORE ASPHALT OR CONCRETE (WIDTH AS INDICATED)		
CORE BORE		
JACK AND BORE		
DIRECTIONAL BORE		
FUTURE CABLE		
REMOVE CABLE		
TO BE REMOVED OR ABANDONED (SHOWN FOR HDPE)		
AERIAL UTILITY (ELECTRIC)		
UNDERGROUND UTILITY (TELEPHONE)		
MAIN TRACKS		
AUXILLARY TRACKS		
CENTERLINE		
RIGHT-OF-WAY		
EDGE OF PAVEMENT		
SIDEWALK		
DITCH LINE		
TAX DISTRICT		
CITY, COUNTY OR STATE BOUNDARY LINE		
PROPERTY LINE		
FENCE LINE		
GUARDRAIL		
TOP OF SLOPE		
TOE OF SLOPE		
FACE OF CURB		
PROPOSED FIBER IN EXISTING DUCT		
PROPOSED FIBER AND DUCT		

DISTRICT ENERGY	
GAS	
WATER	
TELEPHONE	
ELECTRIC	
SANITARY SEWER (SEW)	
STORM DRAIN	
FENCE	
CABLE TV	
STEAM	
OIL	
UNKNOWN UTILITY	
RIGHT OF WAY	
FACE OF CURB	
STREET LT/TRAFFIC SIGNAL	
EDGE OF PAVEMENT	

HANDHOLE - EXISTING	 30"x60"x30" 0+00
HANDHOLE - PROPOSED	 STA 0+00 30"x60"x30"
MANHOLE - EXISTING	
MANHOLE - PROPOSED	 STA 0+00
SPLICE POINT - EXISTING	
SPLICE POINT - PROPOSED	
SITE CALLOUT - PROPOSED	 MACRO CELL NAME STREET
AERIAL STORAGE - EXISTING	
AERIAL STORAGE - PROPOSED	

STEEL MARKER AND SIGN-(A)
ALUMINUM "HUB"-STYLE MARKER-(B)
FLAT MARKER-(C)
TUBULAR MARKER-(D)
TUBULAR MARKER, & ISOLATOR PROTECTOR-(E)

MILE POST MARKER
NOTE:
DASHED = NOT FOUND IN FIELD

PERMIT TRACKING FORM IDENTIFIER

ROCK PROBE (DEPTH AS INDICATED)

UTILITY COVER DEPTH

HANDHOLE, MANHOLE OR PULLBOX

POLE

ANCHOR ONLY

GUY ONLY

OVERHEAD GUY (ARROW IN DIRECTION OF PULL)

ANCHOR AND GUY

SIDEWALK ANCHOR AND GUY

FOREIGN ANCHOR AND GUY

PUSH BRACE (EXISTING POLE)

ACCOUNT CODE CHANGE (BURIED TO AERIAL)

BOND AND GROUND

CULVERT (SIZE AS INDICATED)

BRIDGE

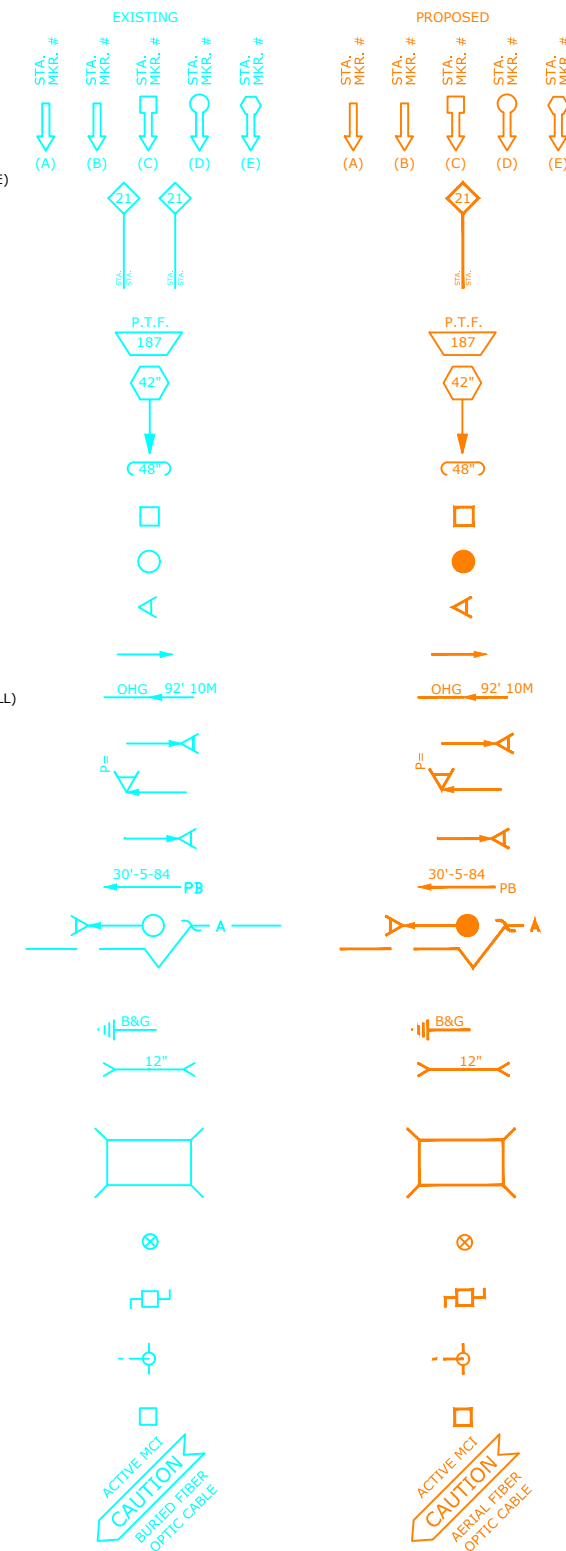
WATER METER

GAS VALVE

FIRE HYDRANT

RAILROAD SIGNAL CONTROL BOX

CAUTION NOTE



DATE: 6/9/21

ENGINEER: SJH

DRAWN BY: SJH

REVISIONS

DATE	DESCRIPTION	INITIAL
06/09/21	CONST PKG	SJH

EXCEPT AS MAY BE OTHERWISE PROVIDED BY CONTRACT, THESE DRAWINGS AND SPECIFICATIONS SHALL REMAIN THE PROPERTY OF MCI COMMUNICATIONS SERVICES, INC., BOTH BEING ISSUED IN STRICT CONFIDENCE AND SHALL NOT BE REPRODUCED, COPIED, OR USED FOR ANY PURPOSE WITHOUT SPECIFIC WRITTEN PERMISSION.

SCALE

HORIZONTAL: NTS

VERTICAL: NTS

MP TO MP

SHEET 6 OF 8

FILE: MAPLEGROVE_AVERYPARK.DWG

MCI metro
ACCESS TRANSMISSION SERVICES, LLC

OUTSIDE PLANT CONSTRUCTION

TITLE: FIBER OPTIC CABLE ROUTE

MAPLEGROVE_AVERYPARK

CLARIFICATION SUMMARY SHEET PROJECT SPECIFIC



PROJECT: AVERY PARK

JEFFERSON HWY
MAPLE GROVE, MN

PROJECT CLARIFICATION SUMMARY				
DESCRIPTION	QUANTITY	UNITS	CLARIFICATION NUMBER	CLARIFICATION No. AND ALPHA
100: CONSTRUCTION - NEW UNDERGROUND 1x2" HDPE (Bore/Jack/Tranch/Plow-SOFTSCAPE)	8	FOOT	100	C-100
210: CONSTRUCTION - PLACE CONDUIT IN TRENCH/ON GRADE	8	FOOT	110	C-110
215: Expose Conduit	2	FOOT	110	C-110
220: CONCRETE ENCASE	20	Cu/Ft	110	C-110
245: RELOCATE/ADJUST HANDHOLE	1	EA	110	C-110
320: CORE BORE BUILDING/MANHOLE WALL	1	EA	110	C-110
420: REPOSITION ACTIVE SLACK	80	FOOT	110	C-110
700: PLCE BURIED CABLE MARKERS & SIGNS/MWCOM WATER CROSSINGS SIGNS	1	EA	110	C-110
711: PLACE ISOLATOR/PROTECTION SYSTEM AT EXISTING HANDHOLES/MANHOLE	1	EA	110	C-110
712: REMOVE BURIED CABLE MARKER POST/HARDWARE	1	EA	110	C-110
MISC-1: 1-2" CONDUIT ADDER (1 EA 2" DUCT)	16	FOOT	110	C-110
MISC-6 LOCATE WIRE ADER (1 EA LOCATE WIRE)	20	FOOT	110	C-110

PERMITS EXISTING			
PERMIT AGENCY / PERMIT NUMBER	SHEET #	FOOTAGE	DATE APPROVED
City of Maple Grove / Avery Park 1	8	8'	XX/XX/XX

CLARIFICATION NO.	QUANTITY

MCImetro
 ACCESS TRANSMISSION SERVICES, LLC
 OUTSIDE PLANT CONSTRUCTION
 TITLE: FIBER OPTIC CABLE ROUTE
 MAPLEGROVE_AVERYPARK

BOM / MAKE READY COST ESTIMATE PROJECT SPECIFIC

DATE: 6/9/21
 ENGINEER: SJH
 DRAWN BY: SJH

REVISIONS		
DATE	DESCRIPTION	INITIAL
06/09/21	CONST PKG	SJH

Hub Name	SITE Hub Name										E-300	E-350	E-355	Existing VZB Owned Fiber	E-400	E-500	E-700	E-800	E-1000	C-100	C-110	C-120	C-200	C-300	C-400 MAKE READY	C-500	C-510	MISC-1 2" DUCT ADDER	MISC-1 4" DUCT ADDER	C-3000 Terminal Placement	MISC-6 LOCATE WIRE		
MAPLE GROVE	TO	AVERY PARK HH RELOCATION										8	0'	0'	0'	0'	0'	0'	0'	0'	0'	0'	0'	0'	0'	0'	0'	\$0.00	\$0.00	0'	16	0	20
Hand holes 12"x12"x12"	Hand holes 24"x36"x24"	Hand Holes 30"x60"x30"	Manholes 4'x4'x4'	2"HDPE SDR 11 +5%	2" PVC SPLIT DUCT	Ground Rods	Locate Station	Marker Posts	LOCATE WIRE	UG SLACK STORAGE FOOTAGE	SC SPLICE CASE	450D SPLICE CASE	600D SPLICE CASE	1728F Cable +3%	864F Cable +3%	576F Cable +3%	432F Cable +3%	288F Cable +3%	216F Cable +3%	144F Cable +3%	96F Cable +3%	72F Cable +3%	48F Cable +3%	24F Cable +3%	12 Port MHT (UG) 500' Tail	12 Port MHT (UG) 1,000' Tail	MHT TAIL DUCT LENGTH	Patch Panel to HH Length	Patch Panel				
0	0	0	0	8.4	16'	1'	1	0	20'	0'	0	0	0	0	8'	0'	0'	0'	0'	0'	0'	0'	0'	0'	0	0	0'	0					

EXCEPT AS MAY BE OTHERWISE PROVIDED BY CONTRACT, THESE DRAWINGS AND SPECIFICATIONS SHALL REMAIN THE PROPERTY OF MCI COMMUNICATIONS SERVICES, INC., BOTH BEING ISSUED IN STRICT CONFIDENCE AND SHALL NOT BE REPRODUCED, COPIED, OR USED FOR ANY PURPOSE WITHOUT SPECIFIC WRITTEN PERMISSION.

SCALE
 HORIZONTAL: NTS
 VERTICAL: NTS
 MP _____ TO MP _____
 SHEET 7 OF 8
 FILE: MAPLEGROVE_AVERYPARK.DWG

THE SUBSURFACE UTILITY INFORMATION IN THIS PLAN IS UTILITY QUALITY LEVEL D. THIS UTILITY QUALITY LEVEL WAS DETERMINED ACCORDING TO THE GUIDELINES OF CI/ASCE 38-02, ENTITLED STANDARD GUIDELINES FOR THE COLLECTION AND DEPICTION OF EXISTING SUBSURFACE UTILITY DATA. IT SHALL BE THE CONTRACTORS RESPONSIBILITY TO UTILIZE THE GOPHER STATE ONE CALL EXCAVATION NOTICE SYSTEM REQUIRED MN STATUTE, CHAPTER 216D FOR ALL UNDERGROUND UTILITY LOCATIONS.



PROJECT: AVERY PARK

JEFFERSON HWY

MAPLE GROVE, MN

CLARIFICATION NO. QUANTITY

CLARIFICATION NO.	QUANTITY

MCImetro
ACCESS TRANSMISSION SERVICES, LLC

MCI

OUTSIDE PLANT CONSTRUCTION
TITLE: FIBER OPTIC CABLE ROUTE
MAPLEGROVE_AVERYPARK

DATE: 6/9/21

ENGINEER: SJH

DRAWN BY: SJH

REVISIONS

DATE	DESCRIPTION	INITIAL
06/09/21	CONST PKG	SJH

EXCEPT AS MAY BE OTHERWISE PROVIDED BY CONTRACT, THESE DRAWINGS AND SPECIFICATIONS SHALL REMAIN THE PROPERTY OF MCI COMMUNICATIONS SERVICES, INC., BOTH BEING ISSUED IN STRICT CONFIDENCE AND SHALL NOT BE REPRODUCED, COPIED, OR USED FOR ANY PURPOSE WITHOUT SPECIFIC WRITTEN PERMISSION.

SCALE

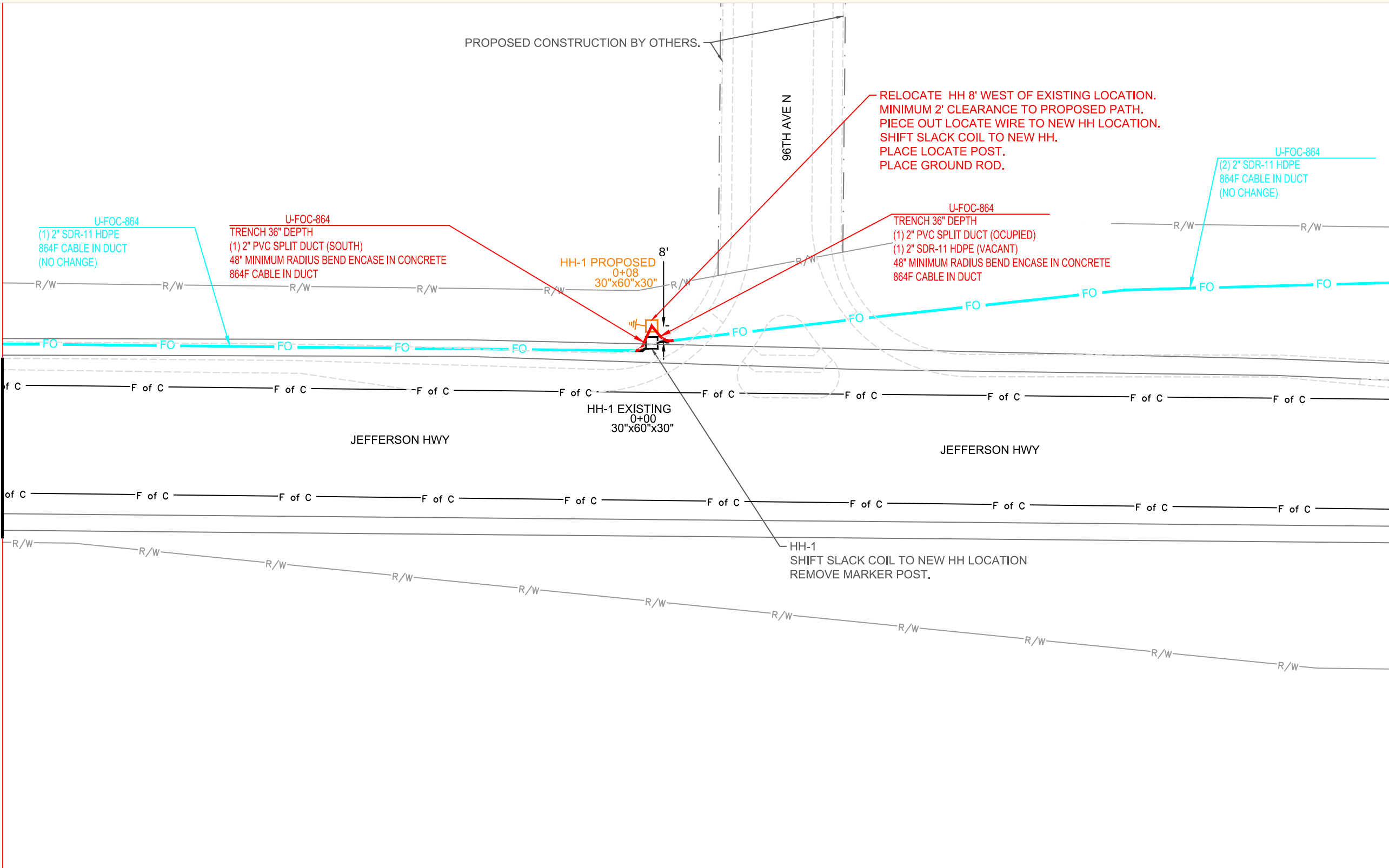
HORIZONTAL: 1"=50'

VERTICAL: 1"=50'

MP _____ TO MP _____

SHEET 8 OF 8

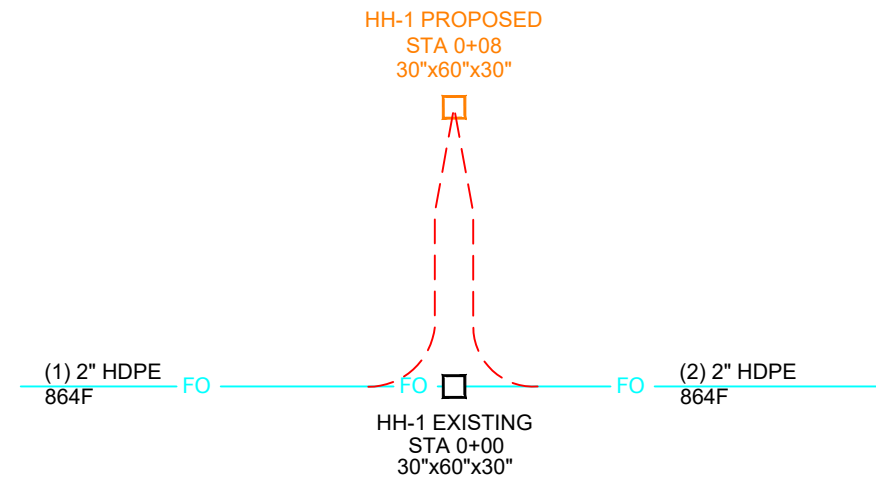
FILE: MAPLEGROVE_AVERYPARK



MATCH TO SHEET 7

MATCH TO SHEET 9

SINGLE LINE DIAGRAM



PROJECT: AVERY PARK

JEFFERSON HWY
MAPLE GROVE, MN

CLARIFICATION NO.	QUANTITY

MCI
 ACCESS TRANSMISSION SERVICES, LLC
 OUTSIDE PLANT CONSTRUCTION
 TITLE: FIBER OPTIC CABLE ROUTE
 MAPLEGROVE_AVERYPARK

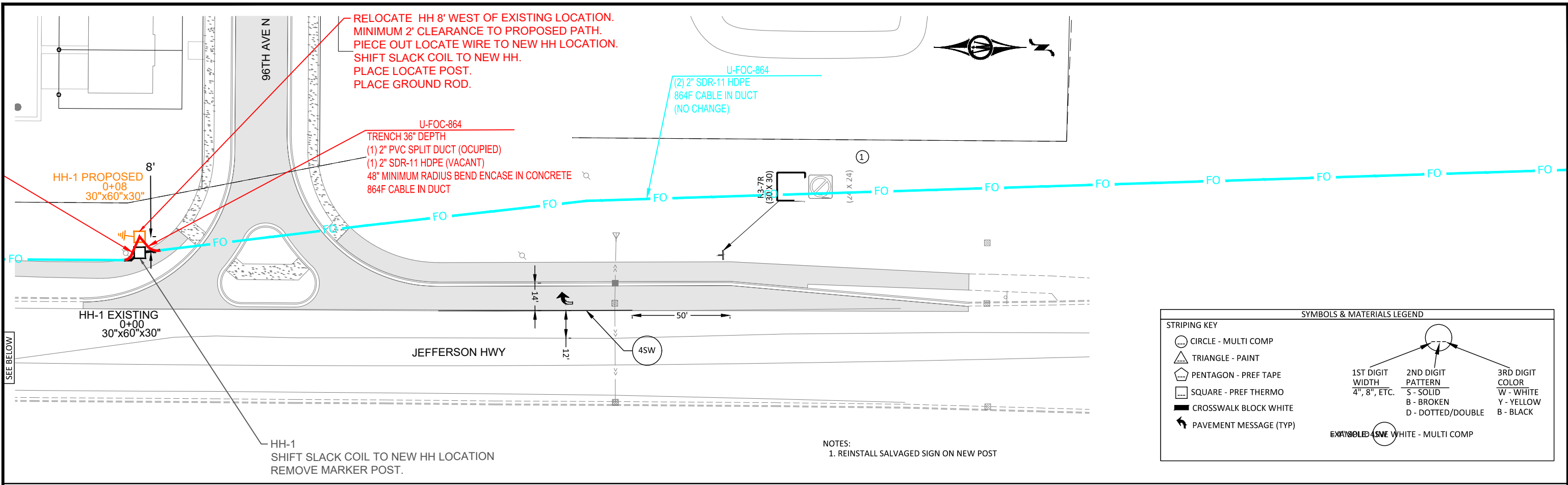
DATE: 6/9/21
ENGINEER: SJH
DRAWN BY: SJH

REVISIONS

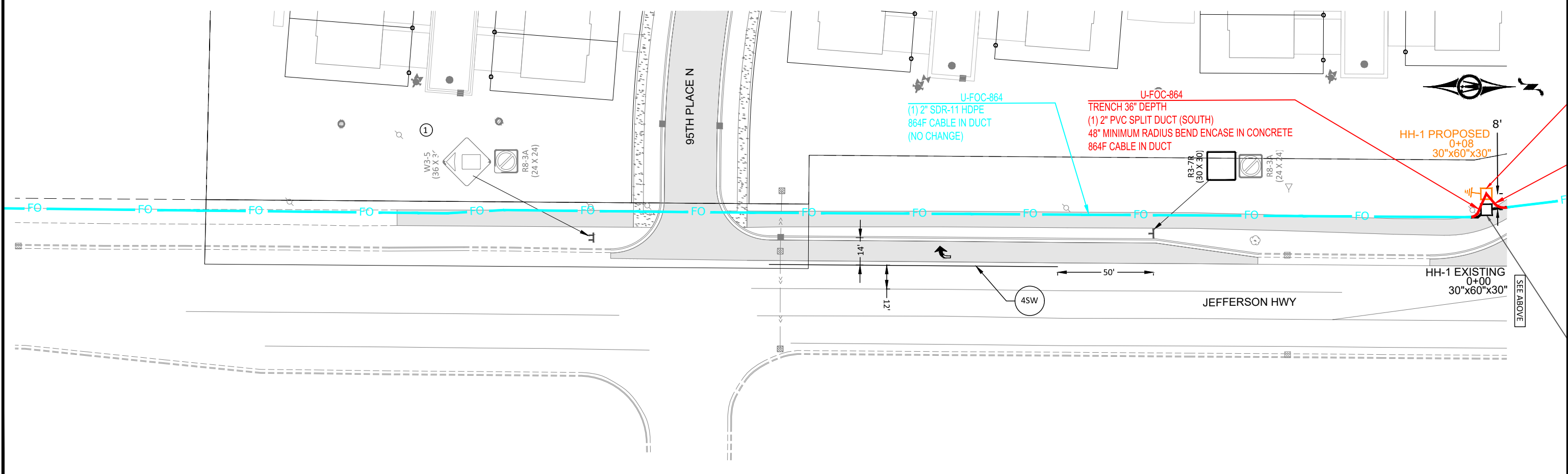
DATE	DESCRIPTION	INITIAL
06/09/21	CONST PKG	SJH

EXCEPT AS MAY BE OTHERWISE PROVIDED BY CONTRACT, THESE DRAWINGS AND SPECIFICATIONS SHALL REMAIN THE PROPERTY OF MCI COMMUNICATIONS SERVICES, INC., BOTH BEING ISSUED IN STRICT CONFIDENCE AND SHALL NOT BE REPRODUCED, COPIED, OR USED FOR ANY PURPOSE WITHOUT SPECIFIC WRITTEN PERMISSION.

SCALE
HORIZONTAL: 1"=50'
VERTICAL: 1"=50'
 MP _____ TO MP _____
SHEET A1 **OF** 8
FILE: MAPLEGROVE_AVERYPARK



STRIPING KEY		SYMBOLS & MATERIALS LEGEND		
	CIRCLE - MULTI COMP		1ST DIGIT WIDTH 4", 8", ETC.	2ND DIGIT PATTERN S - SOLID B - BROKEN D - DOTTED/DOUBLE
	TRIANGLE - PAINT			3RD DIGIT COLOR W - WHITE Y - YELLOW B - BLACK
	PENTAGON - PREF TAPE			
	SQUARE - PREF THERMO			
	CROSSWALK BLOCK WHITE			
	PAVEMENT MESSAGE (TYP)			EXCLUDED SIGN WHITE - MULTI COMP



I HEREBY CERTIFY THAT THIS PLAN, SPECIFICATION, OR REPORT WAS PREPARED BY ME OR UNDER MY DIRECT SUPERVISION AND THAT I AM A DULY LICENSED PROFESSIONAL ENGINEER UNDER THE LAWS OF THE STATE OF MINNESOTA.

MICHAEL S NILL
LIC. NO. 26914 DATE 03/22/2021



2035 COUNTY ROAD D EAST
MAPLEWOOD, MINNESOTA 55109
Phone: (651) 704-9970
Email: Maplewood@bolton-menk.com
www.bolton-menk.com

DESIGNED	NO.	ISSUED FOR	DATE
MSN	0	BID	03/22/2021
DRAWN	0	CON	04/09/2021
CHECKED	1	FO	05/07/2021
MSN			
CLIENT PROJ. NO.	21-006		

MAPLE GROVE, MINNESOTA
AVERY PARK UTILITY AND STREET IMPROVEMENTS
PAVEMENT MARKING AND SIGNING

SHEET
C7.01