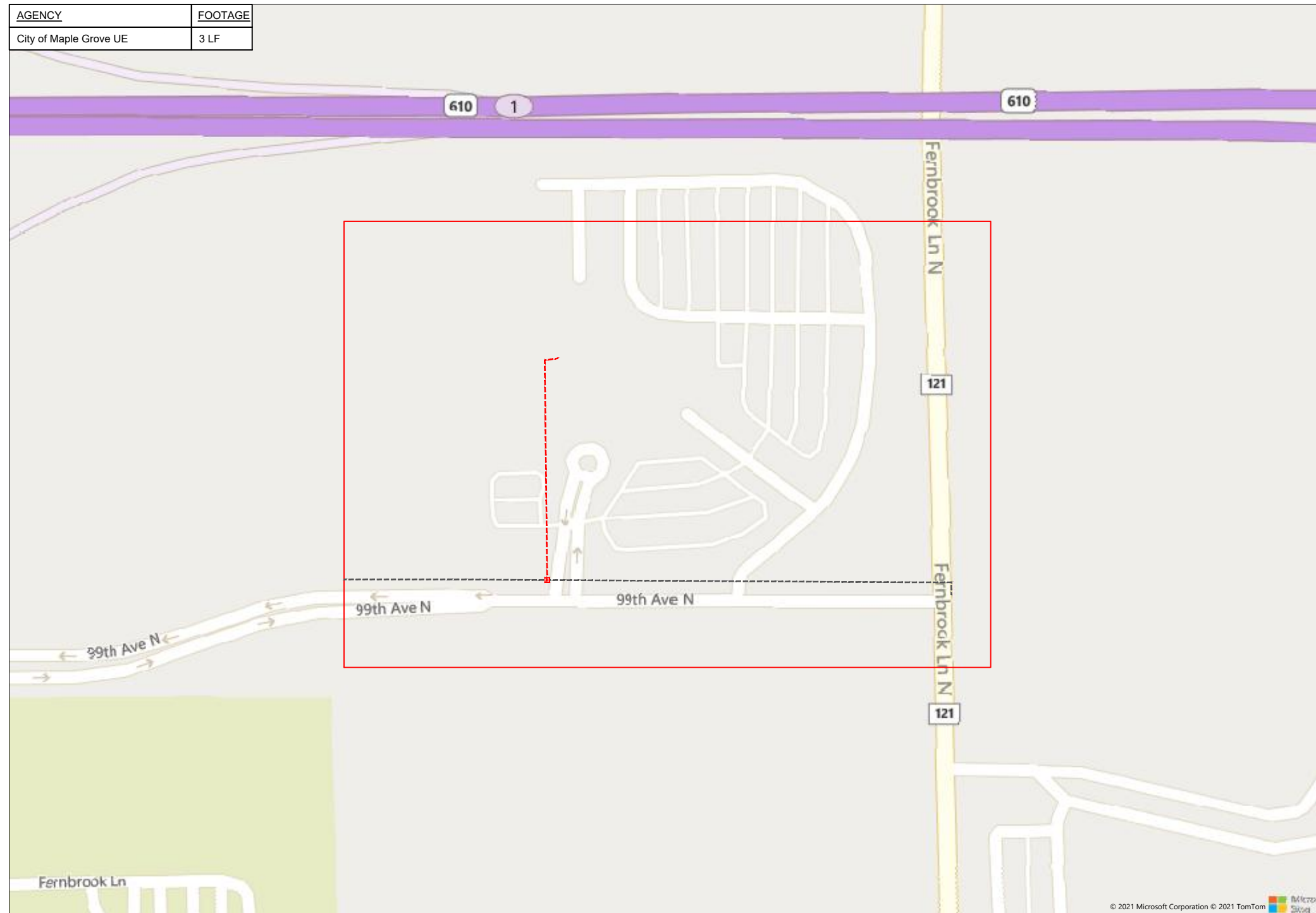


#83982 Fairview Maple Grove CSC



14500 99th Ave N, Maple Grove, MN



1" = -

Route	Fairview Maple Grove
City	Maple Grove
County	Hennepin
Filename	83982 Fairview Maple Grove
Work Order #	83982



160 2nd St SW
Perham, MN 56573
(218) 346-5500

TRACKING

Staked By:	Brain Adams	04/29/21
Drafted By:	WJT	06/08/2021
Project Manager	Abby Wallin	218-347-3622
As-Built By:	-	-
Revision	-	-

Construction Totals	
Route Footage	497'
Total Underground	497'
Total Aerial	0'
Underground (New)	497'
Aerial (New)	0'
Overpull (Ex Duct)	0'
Overlash (Ex Strand)	0'
Plow	0'
Bore	497'
New Vaults	1
New Peds	0

GSOC
GOPHER STATE ONE CALL
1-800-252-1116
www.gopherstateonecall.org

Prepared by:
 compass consultants inc.
Perham, MN 218-346-3600
TrustCompass.com

OVERVIEW

Legend

Fiber Linetypes

	Proposed Underground Fiber - Bore
	Proposed Underground Fiber - Plow
	Proposed UG Fiber in Existing Duct
	Existing Underground Fiber
	Proposed Aerial Fiber
	Proposed Aerial Overlash
	Existing Aerial Fiber
	Proposed Aerial Strand
	Existing Aerial Strand

Other Linetypes

	Rail Road
	Fence
	Retaining Wall
	Storm Sewer
	Sanitary Sewer
	Gas Line
	Tele./Comm. Line
	Water Line
	Electric Line
	Street light/Traffic signal
	District Cooling
	District Heating
	Force Main
	Other Utility or Unknown
	Utility Easement

Abbreviations

- CL - Center Line
- R/W - Right of Way
- BOC - Back of Curb
- FC - Front of Curb
- EOR - Edge of Road
- S/W - Sidewalk
- HH - Handhole
- MH - Manhole
- PRT - Preterminated Cable
- PRG - Pigtail Cable

Symbols

	Proposed Handhole
	Existing Handhole
	Reference Handhole
	Manhole
	Proposed Cabinet
	Existing Cabinet
	Bore Pit
	Proposed Splice Point
	Existing Splice Point
	Power Pole
	Proposed Slack Coil
	Existing Slack Coil
	Proposed Anchor/Down Guy
	Existing Anchor/Down Guy
	Proposed Riser
	Existing Riser
	Aerial Bond
	Aerial Ground
	BM53T - Fiber Marker
	BM53 - Fiber Marker
	Proposed PED
	Existing PED
	Proposed Splice Case
	Existing Splice Case
	Street Light
	Traffic Light
	Transformer
	Hydrant
	Catch Basin
	Tree

Materials	
24 Fiber	622
1.25" Duct	497
Vault (Medium)	1
Ground Rod	1



1" = -

Route
Fairview Maple Grove

City
Maple Grove

County
Hennepin

Filename
83982 Fairview Maple Grove

Work Order #
83982



160 2nd St SW
Perham, MN 56573
(218) 346-5500

TRACKING

Staked By:
Brain Adams 04/29/21

Drafted By:
WJT 06/08/2021

Project Manager
Abby Wallin 218-347-3622

As-Built By:
-

Revision
-

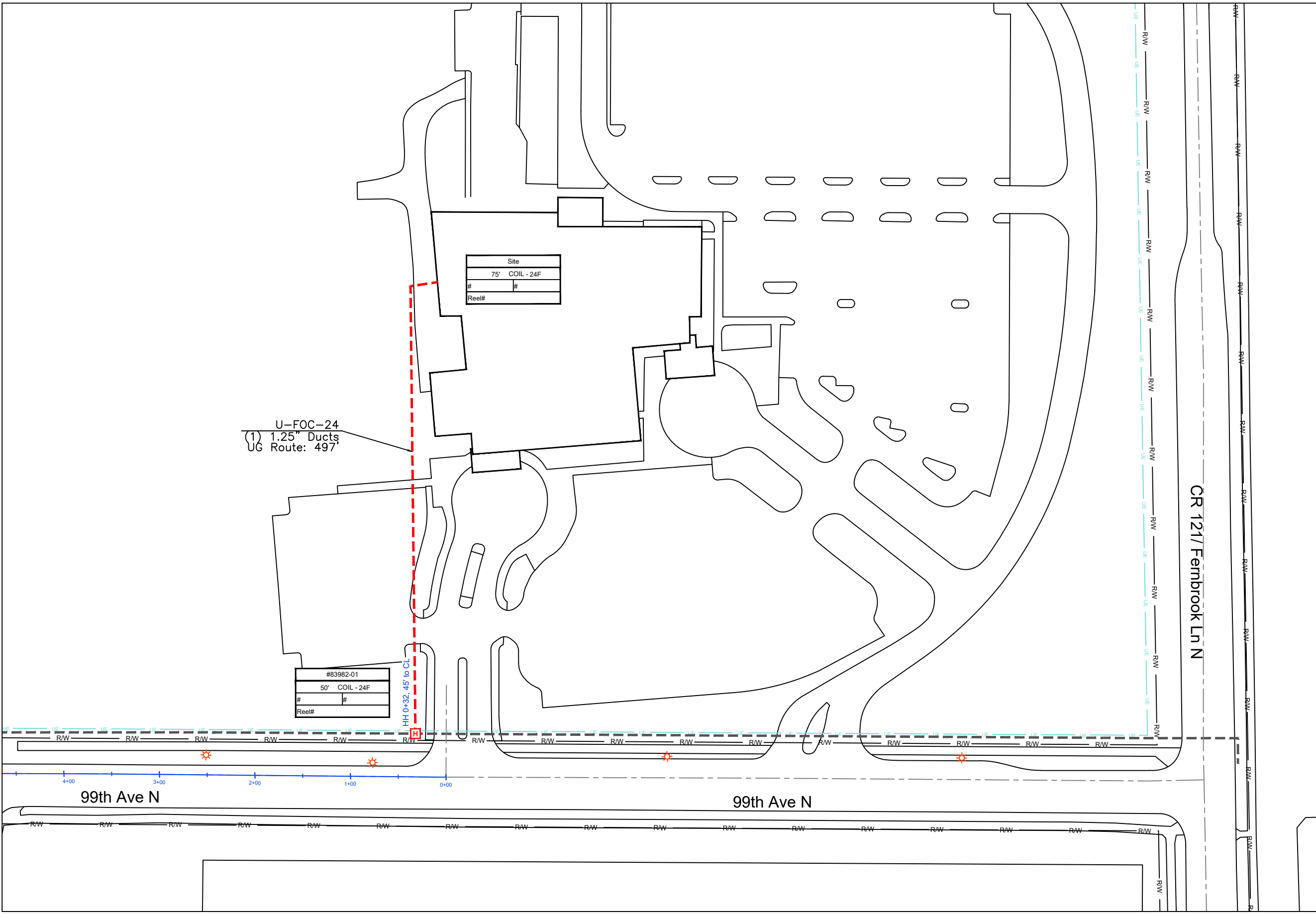
Construction Totals	
Route Footage	497'
Total Underground	497'
Total Aerial	0'
Underground (New)	497'
Aerial (New)	0'
Overpull (Ex Duct)	0'
Overlash (Ex Strand)	0'
Plow	0'
Bore	497'
New Vaults	1
New Peds	0

GSOC

GOPHER STATE ONE CALL
1-800-252-1116
www.gopherstateonecall.org

Prepared by:
 compass consultants inc.
Perham, MN 218-346-3600
TrustCompass.com

LEGEND



Site	
75'	COIL - 24F
#	#
Reel#	

#83982-01	
50'	COIL - 24F
#	#
Reel#	



1" = 100'

Route	Fairview Maple Grove
City	Maple Grove
County	Hennepin
Filename	83982 Fairview Maple Grove
Work Order #	83982

arvig

160 2nd St SW
Perham, MN 56573
(218) 346-5500

TRACKING	
Staked By:	Brain Adams 04/29/21
Drafted By:	WJT 06/08/2021
Project Manager	Abby Wallin 218-347-3622
As-Built By:	-
Revision	-

GSOC
GOPHER STATE ONE CALL
1-800-252-1116
www.gopherstateonecall.org

Prepared by:

compass
consultants inc.
Perham, MN 218-346-3600
TrustCompass.com

83982-01