



MCI metro

ACCESS TRANSMISSION SERVICES CORP  
D/B/A VERIZON ACCESS TRANSMISSION  
OUTSIDE PLANT CONSTRUCTION  
FIBER OPTIC CABLE ROUTE

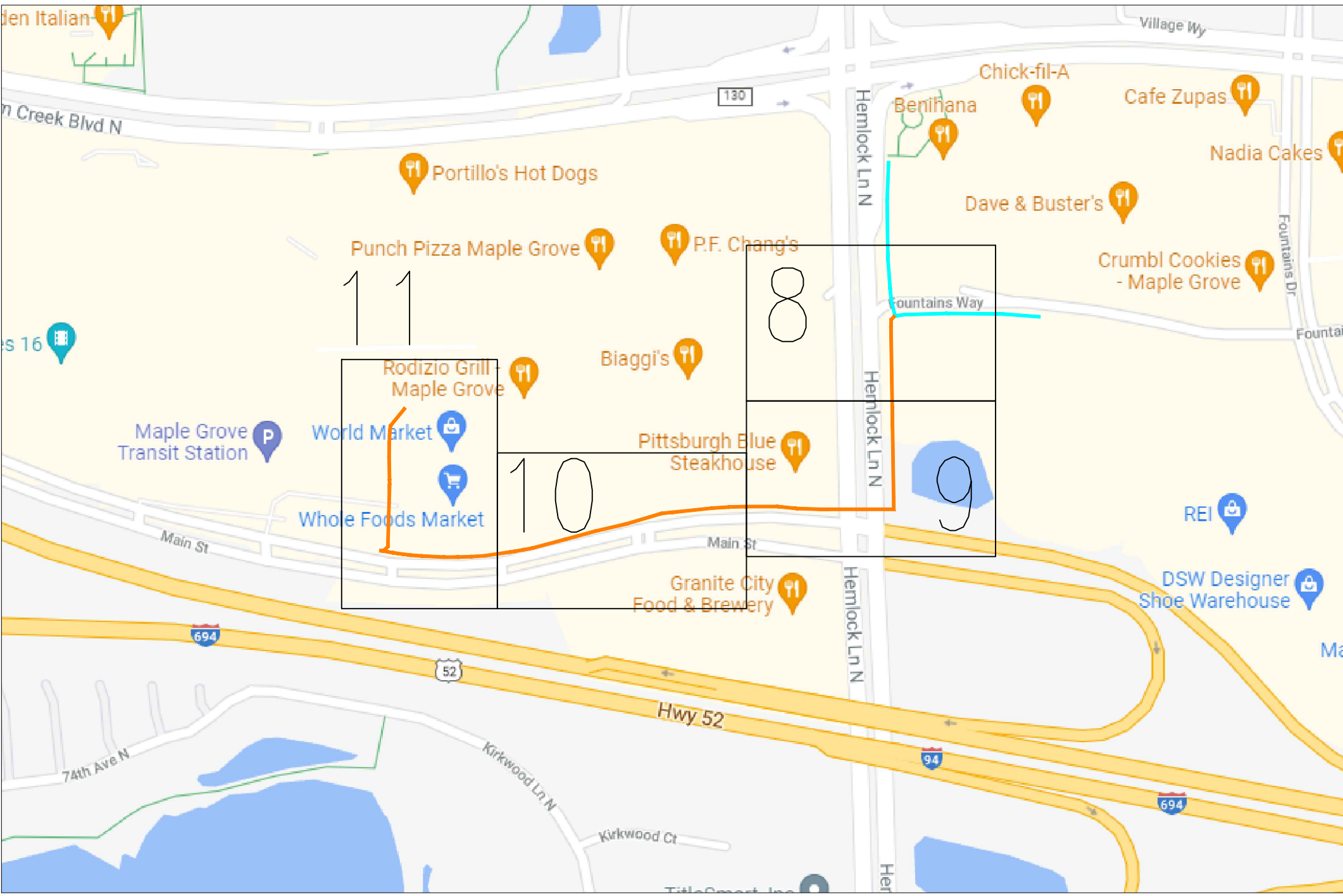
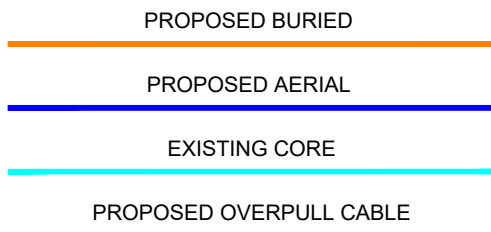
12285 ELM CREEK BLVD N

FQNID	EWO NFID
--	2109ACJS

MAPLE GROVE, MINNESOTA

PROJECT STATUS: ISSUED FOR PERMITTING  
STATUS DATE: 10-26-2021

# LOCATION MAP



CLARIFICATION NO.	QUANTITY

MCI/metro  
 ACCESS TRANSMISSION SERVICES, LLC  
**MCI**  
 OUTSIDE PLANT CONSTRUCTION  
 TITLE: FIBER OPTIC CABLE ROUTE  
 12285 ELM CREEK BLVD N

DATE: 10-26-2021  
 ENGINEER: YL  
 DRAWN BY: YL

REVISIONS		
DATE	DESCRIPTION	INITIAL
10-14-2021	CONSTRUCTION PKG	YL
10-26-2021	SHT 10 REVISION	YL

EXCEPT AS MAY BE OTHERWISE PROVIDED BY CONTRACT, THESE DRAWINGS AND SPECIFICATIONS SHALL REMAIN THE PROPERTY OF MCI COMMUNICATIONS SERVICES, INC. BOTH BEING ISSUED IN STRICT CONFIDENCE AND SHALL NOT BE REPRODUCED, COPIED, OR USED FOR ANY PURPOSE WITHOUT SPECIFIC WRITTEN PERMISSION.

SCALE  
 HORIZONTAL: NTS  
 VERTICAL: NTS  
 MP \_\_\_\_\_ TO MP \_\_\_\_\_  
 SHEET 3 OF 11



# SYMBOLS KEY

	EXISTING	PROPOSED
BURIED CABLE	—	—
AERIAL CABLE	— A —	— A —
SUBMARINE CABLE	— SUBM —	— SUBM —
FOGWIRE CABLE	— FOGW —	— FOGW —
DIRECT BURIED HDPE	— H —	— H —
PVC OR SPLIT PVC CONDUIT	—	—
BSP/GSP OR SPLIT BSP/GSP CONDUIT	—	—
STEEL CASING	—	—
REMOVE AND RESTORE ASPHALT OR CONCRETE (WIDTH AS INDICATED)	48" —	48" —
CORE BORE	—	—
JACK AND BORE	—	—
DIRECTIONAL BORE	— DB —	— DB —
FUTURE CABLE	—	—
REMOVE CABLE	— R —	— R —
TO BE REMOVED OR ABANDONED (SHOWN FOR HDPE)	— X —	— X —
AERIAL UTILITY (ELECTRIC)	— E —	— E —
UNDERGROUND UTILITY (TELEPHONE)	— T —	— T —
MAIN TRACKS	—	—
AUXILIARY TRACKS	—	—
CENTERLINE	— C/L —	— C/L —
RIGHT-OF-WAY	— R/W —	— R/W —
EDGE OF PAVEMENT	—	—
SIDEWALK	—	—
DITCH LINE	— D/L —	— D/L —
TAX DISTRICT	—	—
CITY, COUNTY OR STATE BOUNDARY LINE	—	—
PROPERTY LINE	—	—
FENCE LINE	— X —	— X —
GUARDRAIL	—	—
TOP OF SLOPE	—	—
TOE OF SLOPE	—	—
FACE OF CURB	— F of C —	— F of C —
PROPOSED FIBER IN EXISTING DUCT	— OP —	— OP —
PROPOSED FIBER AND DUCT	— DB —	— DB —
PROPOSED DUCT	— DB —	— DB —
MST TAIL	—	—
EXISTING MCI	— FO —	— FO —

GAS	— G —
WATER	— W —
TELEPHONE	— T —
ELECTRIC	— E —
SANITARY SEWER (SEW)	— SEW —
STORM DRAIN	— SD —
FENCE	— X —
CABLE TV	— TV —
STEAM	— STM —
OIL	— OIL —
UNKNOWN UTILITY	— UNK —
RIGHT OF WAY	— R/W —
FACE OF CURB	— F of C —
EDGE OF PAVEMENT	— EOP —
MST - PROPOSED	# ROUTE_NO STA FIBER_CNT
HANDHOLE - EXISTING	HH STA 0+00 24x36x24
HANDHOLE - PROPOSED	HH STA 0+00 24x36x24
MANHOLE - EXISTING	MH STA 0+00
MANHOLE - PROPOSED	MH STA 0+00
SPLICE POINT - EXISTING	—
SPLICE POINT - PROPOSED	—
SITE CALLOUT - PROPOSED	MICRO CELL NAME STREET
AERIAL STORAGE - EXISTING	—
AERIAL STORAGE - PROPOSED	—
FDH - PROPOSED	FDH# FDH_SIZE FT_COUNT
POWER PEDESTAL	— P —
TELEPHONE PEDESTAL	— T —

STEEL MARKER AND SIGN-(A)  
ALUMINUM "HUB"-STYLE MARKER-(B)  
FLAT MARKER-(C)  
TUBULAR MARKER-(D)  
TUBULAR MARKER, & ISOLATOR PROTECTOR-(E)

MILE POST MARKER  
NOTE:  
DASHED = NOT FOUND IN FIELD

PERMIT TRACKING FORM IDENTIFIER

ROCK PROBE (DEPTH AS INDICATED)

UTILITY COVER DEPTH

HANDHOLE, MANHOLE OR PULLBOX

POLE

ANCHOR ONLY

GUY ONLY

OVERHEAD GUY (ARROW IN DIRECTION OF PULL)

ANCHOR AND GUY

SIDEWALK ANCHOR AND GUY

FOREIGN ANCHOR AND GUY

PUSH BRACE (EXISTING POLE)

ACCOUNT CODE CHANGE (BURIED TO AERIAL)

BOND AND GROUND

CULVERT (SIZE AS INDICATED)

BRIDGE

WATER METER

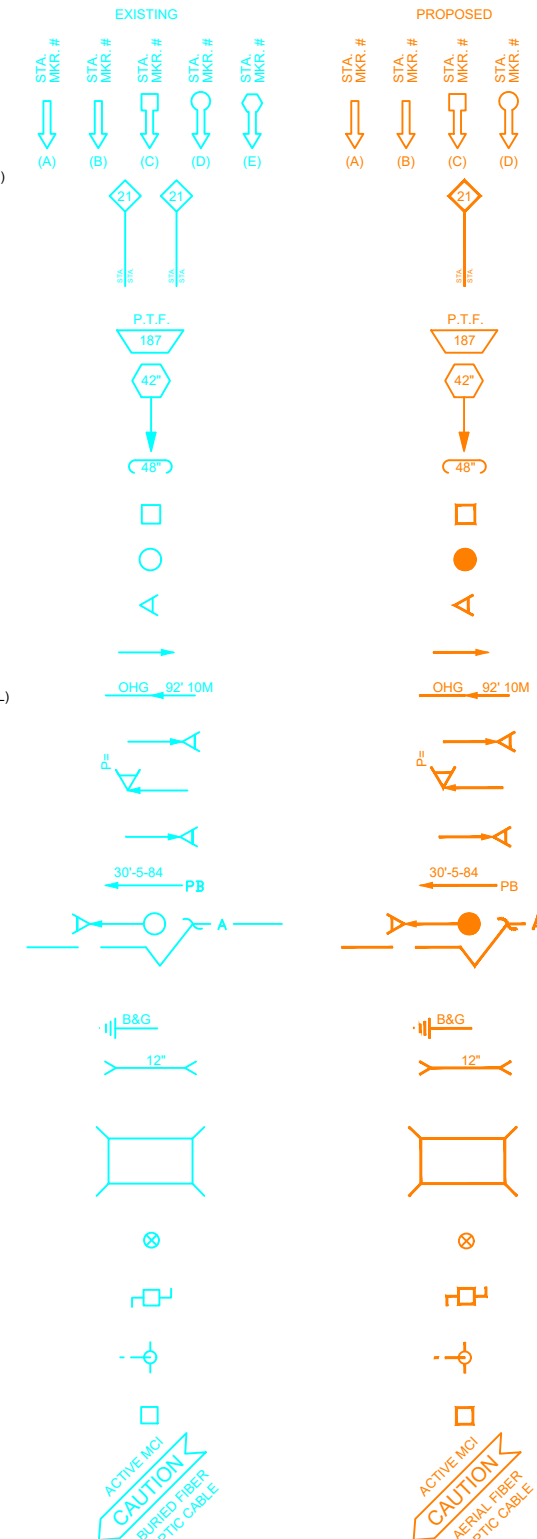
GAS VALVE

FIRE HYDRANT

RAILROAD SIGNAL CONTROL BOX

CAUTION NOTE

CONDUIT CALL OUTS



U-FOC-48

PROJECT: 12285 ELM CREEK BLVD N

MAPLE GROVE, MN

CLARIFICATION NO. QUANTITY

MCI metro  
ACCESS TRANSMISSION SERVICES, LLC  
OUTSIDE PLANT CONSTRUCTION  
TITLE: FIBER OPTIC CABLE ROUTE  
12285 ELM CREEK BLVD N

DATE: 10-26-2021

ENGINEER: YL

DRAWN BY: YL

REVISIONS

DATE	DESCRIPTION	INITIAL
10-14-2021	CONSTRUCTION PKG	YL
10-26-2021	SHT 10 REVISION	YL

EXCEPT AS MAY BE OTHERWISE PROVIDED BY CONTRACT, THESE DRAWINGS AND SPECIFICATIONS SHALL REMAIN THE PROPERTY OF MCI COMMUNICATIONS SERVICES, INC. BEING ISSUED IN STRICT CONFIDENCE AND SHALL NOT BE REPRODUCED, COPIED, OR USED FOR ANY PURPOSE WITHOUT SPECIFIC WRITTEN PERMISSION.

SCALE

HORIZONTAL: NTS

VERTICAL: NTS

MP TO MP

SHEET 6 OF 11

FILE: 12285 ELM CREEK BLVD N.DWG

MCImetro  
ACCESS TRANSMISSION SERVICES, LLC

**MCI**

OUTSIDE PLANT CONSTRUCTION  
TITLE: FIBER OPTIC CABLE ROUTE  
12285 ELM CREEK BLVD N

DATE: 10-26-2021

ENGINEER: YL

DRAWN BY: YL

REVISIONS

DATE	DESCRIPTION	INITIAL
10-14-2021	CONSTRUCTION PKG	YL
10-26-2021	SHT 10 REVISION	YL

EXCEPT AS MAY BE OTHERWISE PROVIDED BY CONTRACT, THESE DRAWINGS AND SPECIFICATIONS SHALL REMAIN THE PROPERTY OF MCI COMMUNICATIONS SERVICES, INC. ANY BEING ISSUED IN STRICT CONFIDENCE AND SHALL NOT BE REPRODUCED, COPIED, OR USED FOR ANY PURPOSE WITHOUT SPECIFIC WRITTEN PERMISSION.

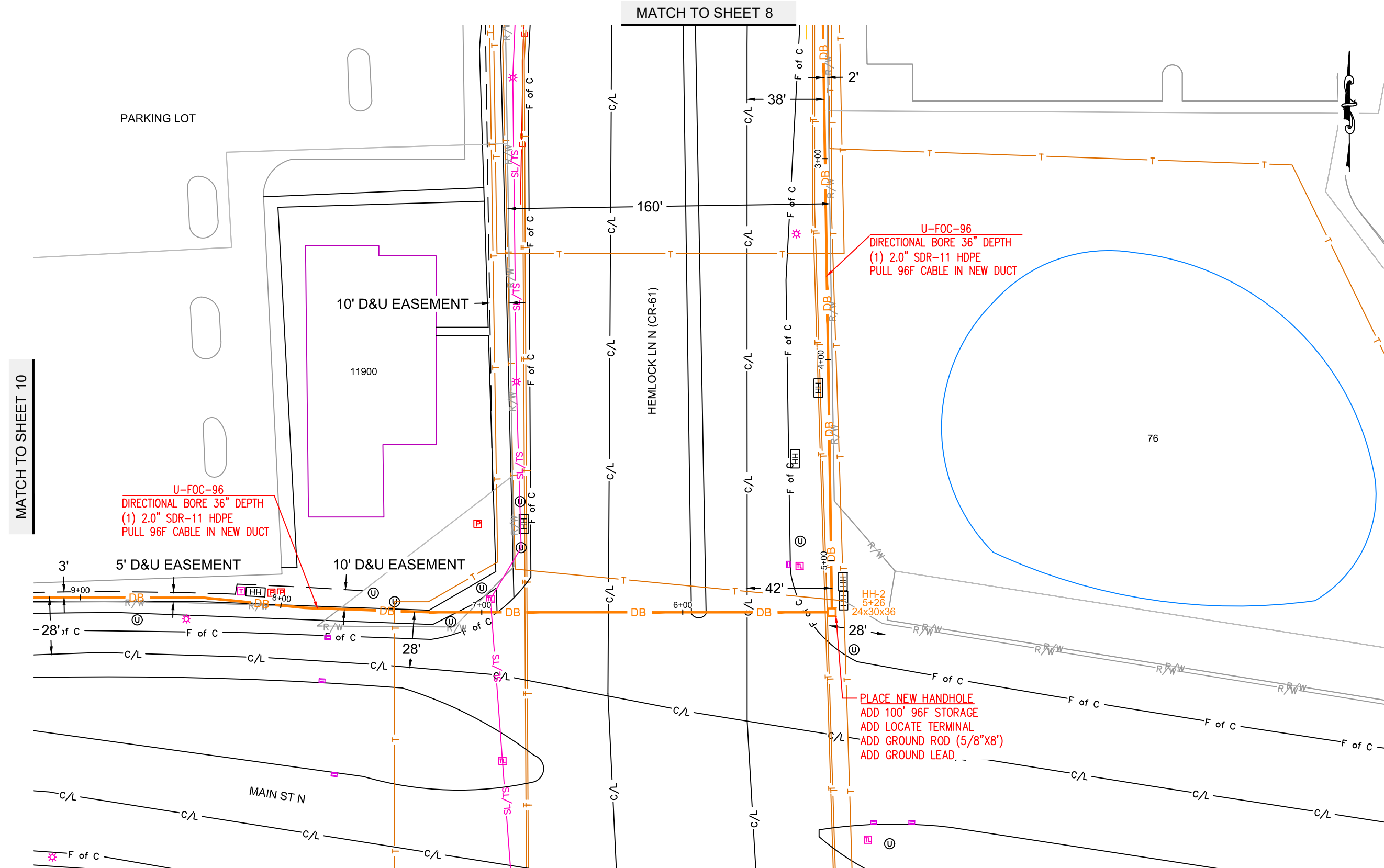
SCALE

HORIZONTAL: 1"=50'  
VERTICAL: 1"=50'

MP TO MP

SHEET 9 OF 11

FILE: 12285 ELM CREEK BLVD N.DWG



CLARIFICATION NO.	QUANTITY

MCI  
ACCESS TRANSMISSION SERVICES, LLC

OUTSIDE PLANT CONSTRUCTION  
TITLE: FIBER OPTIC CABLE ROUTE

12285 ELM CREEK BLVD N

DATE: 10-26-2021

ENGINEER: YL

DRAWN BY: YL

REVISIONS

DATE	DESCRIPTION	INITIAL
10-14-2021	CONSTRUCTION PKG	YL
10-26-2021	SHT 10 REVISION	YL

EXCEPT AS MAY BE OTHERWISE PROVIDED BY CONTRACT, THESE DRAWINGS AND SPECIFICATIONS SHALL REMAIN THE PROPERTY OF MCI COMMUNICATIONS SERVICES, INC. BOTH BEING ISSUED IN STRICT CONFIDENCE AND SHALL NOT BE REPRODUCED, COPIED, OR USED FOR ANY PURPOSE WITHOUT SPECIFIC WRITTEN PERMISSION.

SCALE

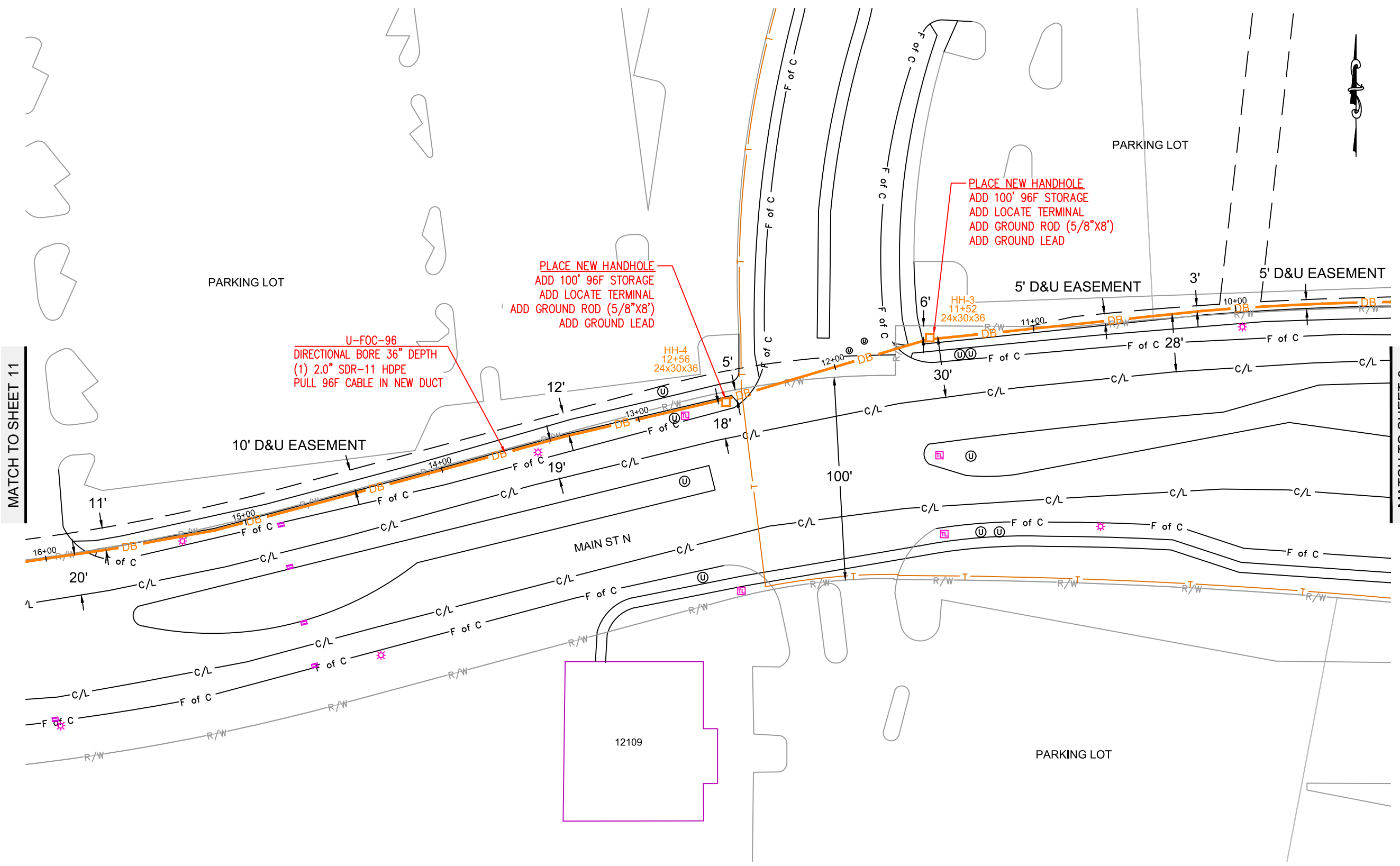
HORIZONTAL: 1"=50'

VERTICAL: 1"=50'

MP \_\_\_\_\_ TO MP \_\_\_\_\_

SHEET 10 OF 11

FILE: 12285 ELM CREEK BLVD N DWG



MATCH TO SHEET 11

MATCH TO SHEET 9



PROJECT: 12285 ELM CREEK BLVD N

MAPLE GROVE, MN

CLARIFICATION NO. QUANTITY

CLARIFICATION NO.	QUANTITY

MCImetro  
ACCESS TRANSMISSION SERVICES, LLC

**MCI**

OUTSIDE PLANT CONSTRUCTION  
TITLE: FIBER OPTIC CABLE ROUTE  
12285 ELM CREEK BLVD N

DATE: 10-26-2021

ENGINEER: YL

DRAWN BY: YL

REVISIONS

DATE	DESCRIPTION	INITIAL
10-14-2021	CONSTRUCTION PKG	YL
10-26-2021	SHT 10 REVISION	YL


EXCEPT AS MAY BE OTHERWISE PROVIDED BY CONTRACT, THESE DRAWINGS AND SPECIFICATIONS SHALL REMAIN THE PROPERTY OF MCI COMMUNICATIONS SERVICES, INC. BOTH BEING ISSUED IN STRICT CONFIDENCE AND SHALL NOT BE REPRODUCED, COPIED, OR USED FOR ANY PURPOSE WITHOUT SPECIFIC WRITTEN PERMISSION.

SCALE

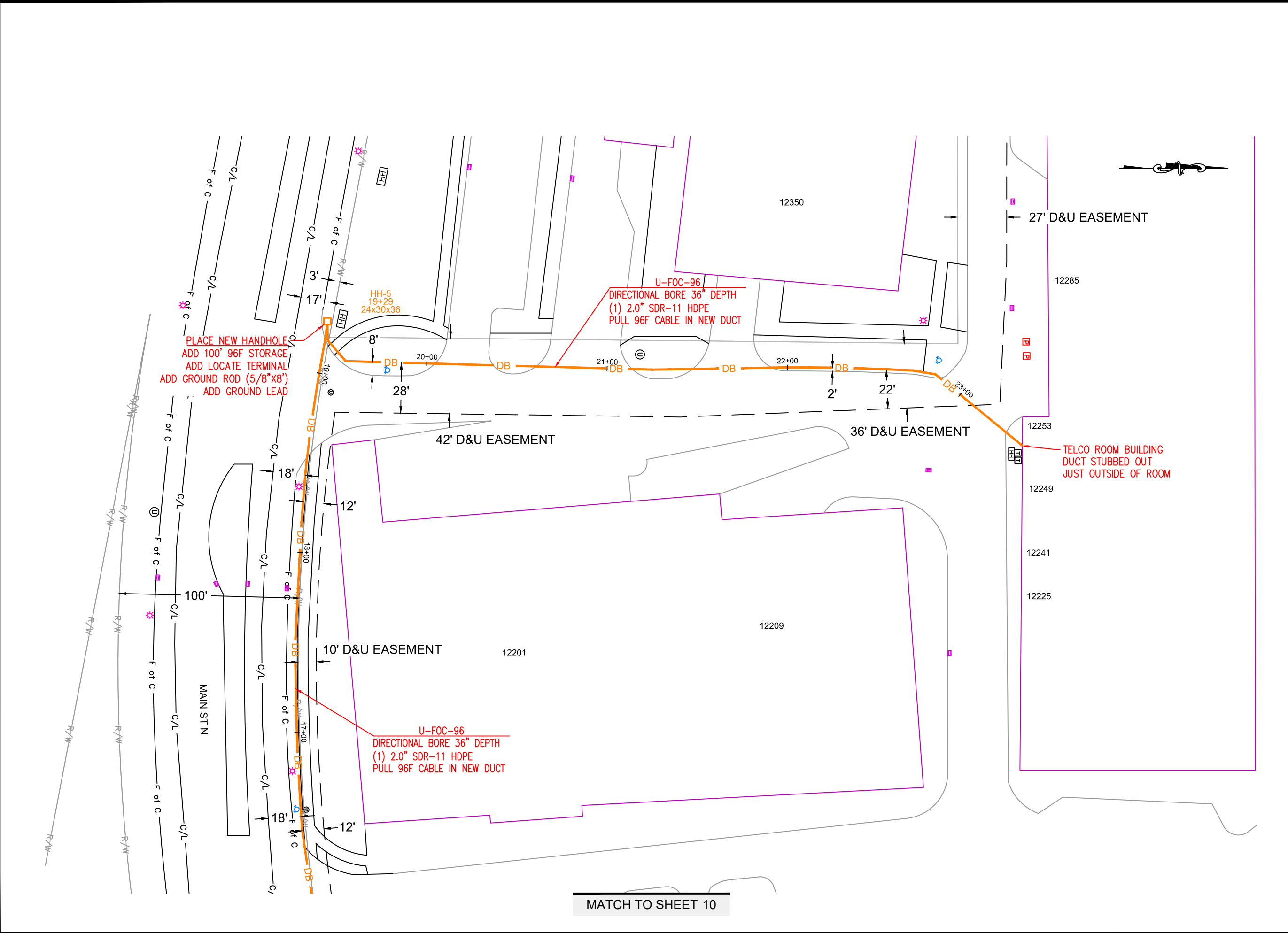
HORIZONTAL: 1"=50'

VERTICAL: 1"=50'

MP \_\_\_\_\_ TO MP \_\_\_\_\_

SHEET 11 OF 11

FILE: 12285 ELM CREEK BLVD N.DWG



MATCH TO SHEET 10