



PROJECT: 1804BZDZ.2\_MPLG

MAPLE GROVE, MN

CLARIFICATION NO.	QUANTITY
C100	
C110	
C120	
C200	
1x4" HDPE	
UG 48	
OVERPULL	
AER 864	
AER 432	
UG 864	
UG 432	
UG 288	
UG 144	
UG 96	
UG 72	
2" HDPE = C100	
HH (24"x36"x24")	
HH (30"x60"x30")	
WARNING SIGN	
ANCHOR/GUY	
AER SLACK LOOP	
SPLICE CLOSURE	
(1) FUSION SPLICE	
(12) RIBBON SPLICE	
FDH	
MST	
MST LENGTH	

SEE SHEET 2

MCI metro  
ACCESS TRANSMISSION SERVICES, LLC



OUTSIDE PLANT CONSTRUCTION  
TITLE: FIBER OPTIC CABLE ROUTE  
1804BZDZ.2\_MPLG

DATE: 2/22/2021

ENGINEER: KLJ

DRAWN BY: K. ZAVORAL

REVISIONS		
DATE:	DESCRIPTION	INITIAL

EXCEPT AS MAY BE OTHERWISE PROVIDED BY CONTRACT, THESE DRAWINGS AND SPECIFICATIONS SHALL REMAIN THE PROPERTY OF MCI COMMUNICATIONS SERVICES, INC., BOTH BEING ISSUED IN STRICT CONFIDENCE AND SHALL NOT BE REPRODUCED, COPIED, OR USED FOR ANY PURPOSE WITHOUT SPECIFIC WRITTEN PERMISSION.

SCALE

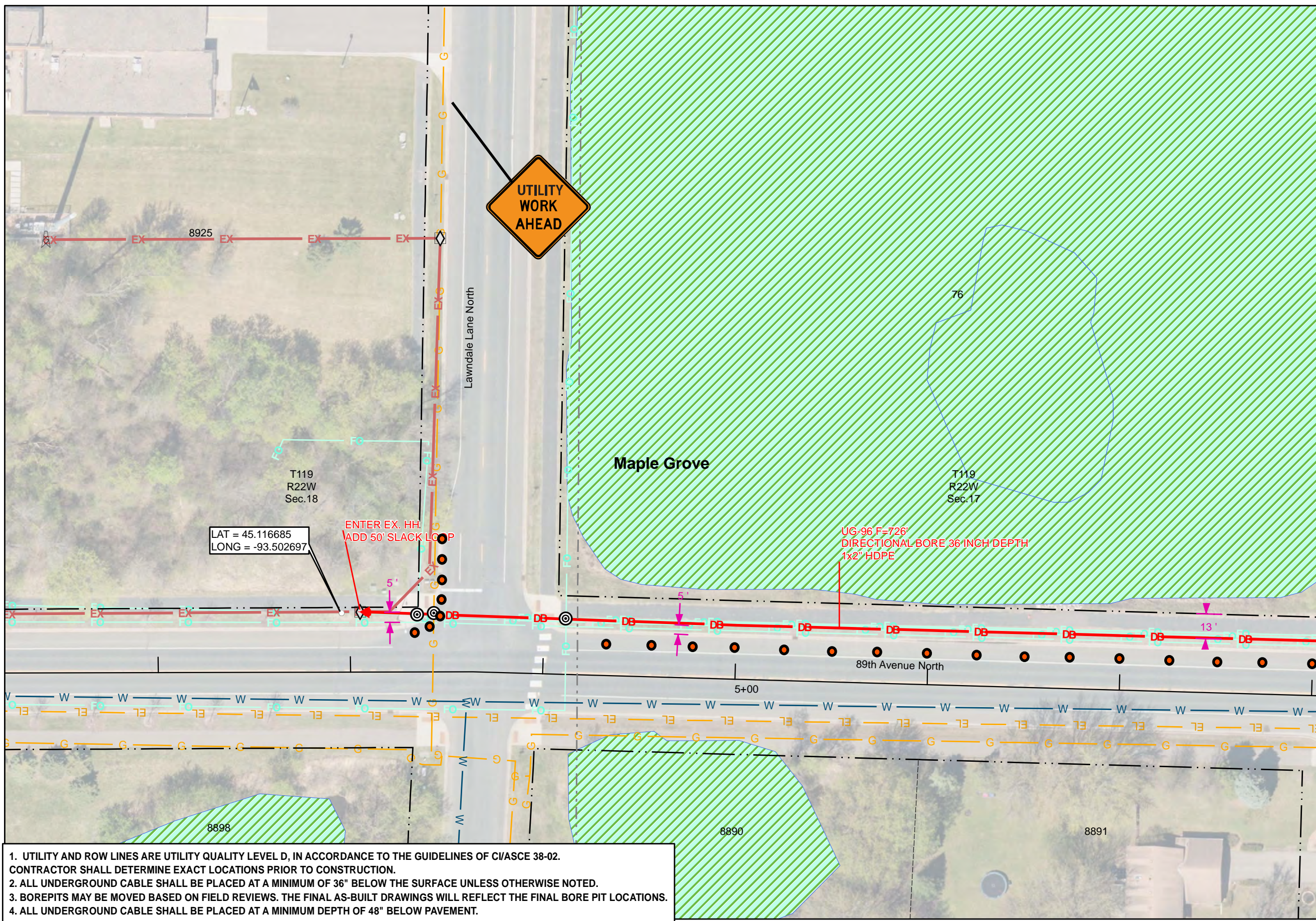
HORIZONTAL: 1" = 50'

VERTICAL: 1" = 50'

MP \_\_\_\_\_ TO MP \_\_\_\_\_

SHEET 1 OF 10

FILE: MINNEAPOLIS\_NetworkExtension



- UTILITY AND ROW LINES ARE UTILITY QUALITY LEVEL D, IN ACCORDANCE TO THE GUIDELINES OF CI/ASCE 38-02. CONTRACTOR SHALL DETERMINE EXACT LOCATIONS PRIOR TO CONSTRUCTION.
- ALL UNDERGROUND CABLE SHALL BE PLACED AT A MINIMUM OF 36" BELOW THE SURFACE UNLESS OTHERWISE NOTED.
- BOREPITS MAY BE MOVED BASED ON FIELD REVIEWS. THE FINAL AS-BUILT DRAWINGS WILL REFLECT THE FINAL BORE PIT LOCATIONS.
- ALL UNDERGROUND CABLE SHALL BE PLACED AT A MINIMUM DEPTH OF 48" BELOW PAVEMENT.





PROJECT: 1804BZDZ.2\_MPLG

MAPLE GROVE, MN

CLARIFICATION NO.	QUANTITY
C100	726
C110	
C120	
C200	
1x4" HDPE	
UG 48	
OVERPULL	
AER 864	
AER 432	
UG 864	
UG 432	
UG 288	
UG 144	
UG 96	826
UG 72	
2" HDPE = C100	726
HH (24"x36"x24")	
HH (30"x60"x30")	1
WARNING SIGN	1
ANCHOR/GUY	
AER SLACK LOOP	
SPLICE CLOSURE	
(1) FUSION SPLICE	
(12) RIBBON SPLICE	
FDH	
MST	
MST LENGTH	

MCI metro  
ACCESS TRANSMISSION SERVICES, LLC



OUTSIDE PLANT CONSTRUCTION  
TITLE: FIBER OPTIC CABLE ROUTE  
1804BZDZ.2\_MPLG

DATE: 2/22/2021

ENGINEER: KLJ

DRAWN BY: K. ZAVORAL

REVISIONS		
DATE:	DESCRIPTION	INITIAL

EXCEPT AS MAY BE OTHERWISE PROVIDED BY CONTRACT, THESE DRAWINGS AND SPECIFICATIONS SHALL REMAIN THE PROPERTY OF MCI COMMUNICATIONS SERVICES, INC., BOTH BEING ISSUED IN STRICT CONFIDENCE AND SHALL NOT BE REPRODUCED, COPIED, OR USED FOR ANY PURPOSE WITHOUT SPECIFIC WRITTEN PERMISSION.

SCALE

HORIZONTAL: 1" = 50'

VERTICAL: 1" = 50'

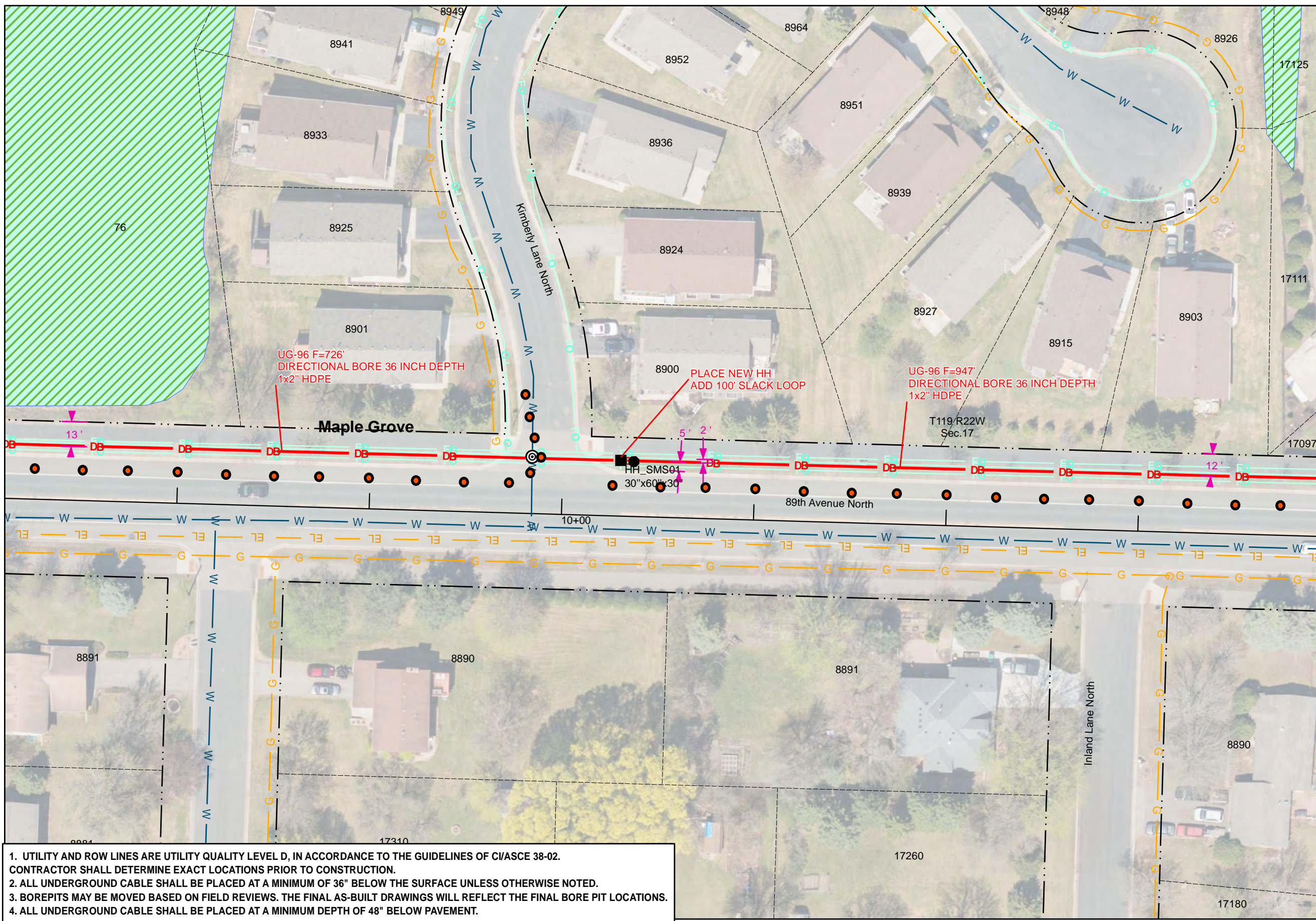
MP \_\_\_\_\_ TO MP \_\_\_\_\_

SHEET 2 OF 10

FILE: MINNEAPOLIS\_NetworkExtension

SEE SHEET 1

SEE SHEET 3



1. UTILITY AND ROW LINES ARE UTILITY QUALITY LEVEL D, IN ACCORDANCE TO THE GUIDELINES OF C/ASCE 38-02. CONTRACTOR SHALL DETERMINE EXACT LOCATIONS PRIOR TO CONSTRUCTION.
2. ALL UNDERGROUND CABLE SHALL BE PLACED AT A MINIMUM OF 36" BELOW THE SURFACE UNLESS OTHERWISE NOTED.
3. BOREPITS MAY BE MOVED BASED ON FIELD REVIEWS. THE FINAL AS-BUILT DRAWINGS WILL REFLECT THE FINAL BORE PIT LOCATIONS.
4. ALL UNDERGROUND CABLE SHALL BE PLACED AT A MINIMUM DEPTH OF 48" BELOW PAVEMENT.





PROJECT: 1804BZDZ.2\_MPLG

MAPLE GROVE, MN

CLARIFICATION NO.	QUANTITY
C100	
C110	
C120	
C200	
1x4" HDPE	
UG 48	
OVERPULL	
AER 864	
AER 432	
UG 864	
UG 432	
UG 288	
UG 144	
UG 96	
UG 72	
2" HDPE = C100	
HH (24"x36"x24")	
HH (30"x60"x30")	
WARNING SIGN	
ANCHOR/GUY	
AER SLACK LOOP	
SPLICE CLOSURE	
(1) FUSION SPLICE	
(12) RIBBON SPLICE	
FDH	
MST	
MST LENGTH	

McImetro  
ACCESS TRANSMISSION SERVICES, LLC



OUTSIDE PLANT CONSTRUCTION

TITLE: FIBER OPTIC CABLE ROUTE

1804BZDZ.2\_MPLG

DATE: 2/22/2021

ENGINEER: KLJ

DRAWN BY: K. ZAVORAL

REVISIONS		
DATE	DESCRIPTION	INITIAL

EXCEPT AS MAY BE OTHERWISE PROVIDED BY CONTRACT, THESE DRAWINGS AND SPECIFICATIONS SHALL REMAIN THE PROPERTY OF MCI COMMUNICATIONS SERVICES, INC., BOTH BEING ISSUED IN STRICT CONFIDENCE AND SHALL NOT BE REPRODUCED, COPIED, OR USED FOR ANY PURPOSE WITHOUT SPECIFIC WRITTEN PERMISSION.

SCALE

HORIZONTAL: 1" = 50'

VERTICAL: 1" = 50'

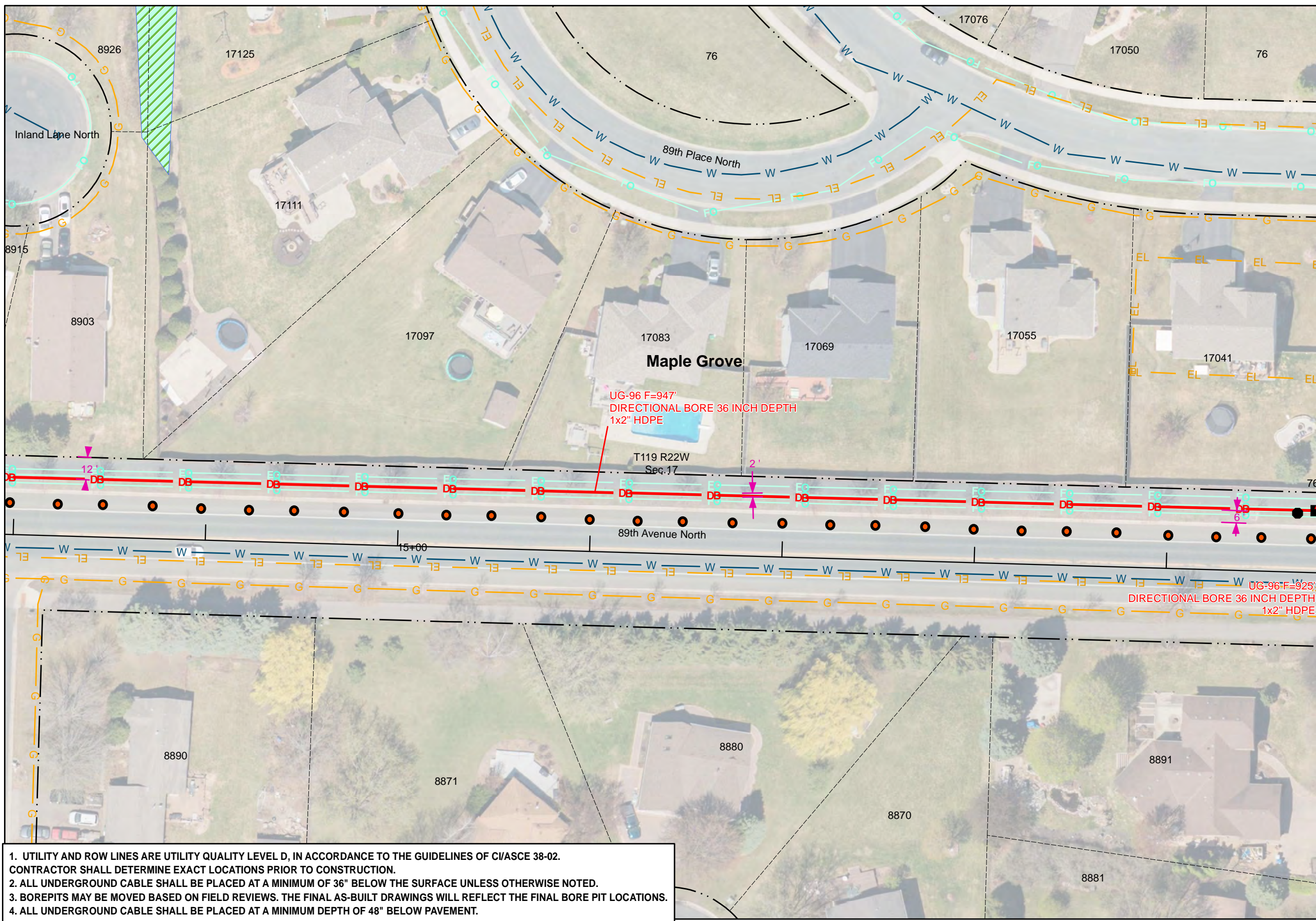
MP \_\_\_\_\_ TO MP \_\_\_\_\_

SHEET 3 OF 10

FILE: MINNEAPOLIS\_NetworkExtension

SEE SHEET 2

SEE SHEET 4



- UTILITY AND ROW LINES ARE UTILITY QUALITY LEVEL D, IN ACCORDANCE TO THE GUIDELINES OF CI/ASCE 38-02. CONTRACTOR SHALL DETERMINE EXACT LOCATIONS PRIOR TO CONSTRUCTION.
- ALL UNDERGROUND CABLE SHALL BE PLACED AT A MINIMUM OF 36" BELOW THE SURFACE UNLESS OTHERWISE NOTED.
- BOREPITS MAY BE MOVED BASED ON FIELD REVIEWS. THE FINAL AS-BUILT DRAWINGS WILL REFLECT THE FINAL BORE PIT LOCATIONS.
- ALL UNDERGROUND CABLE SHALL BE PLACED AT A MINIMUM DEPTH OF 48" BELOW PAVEMENT.





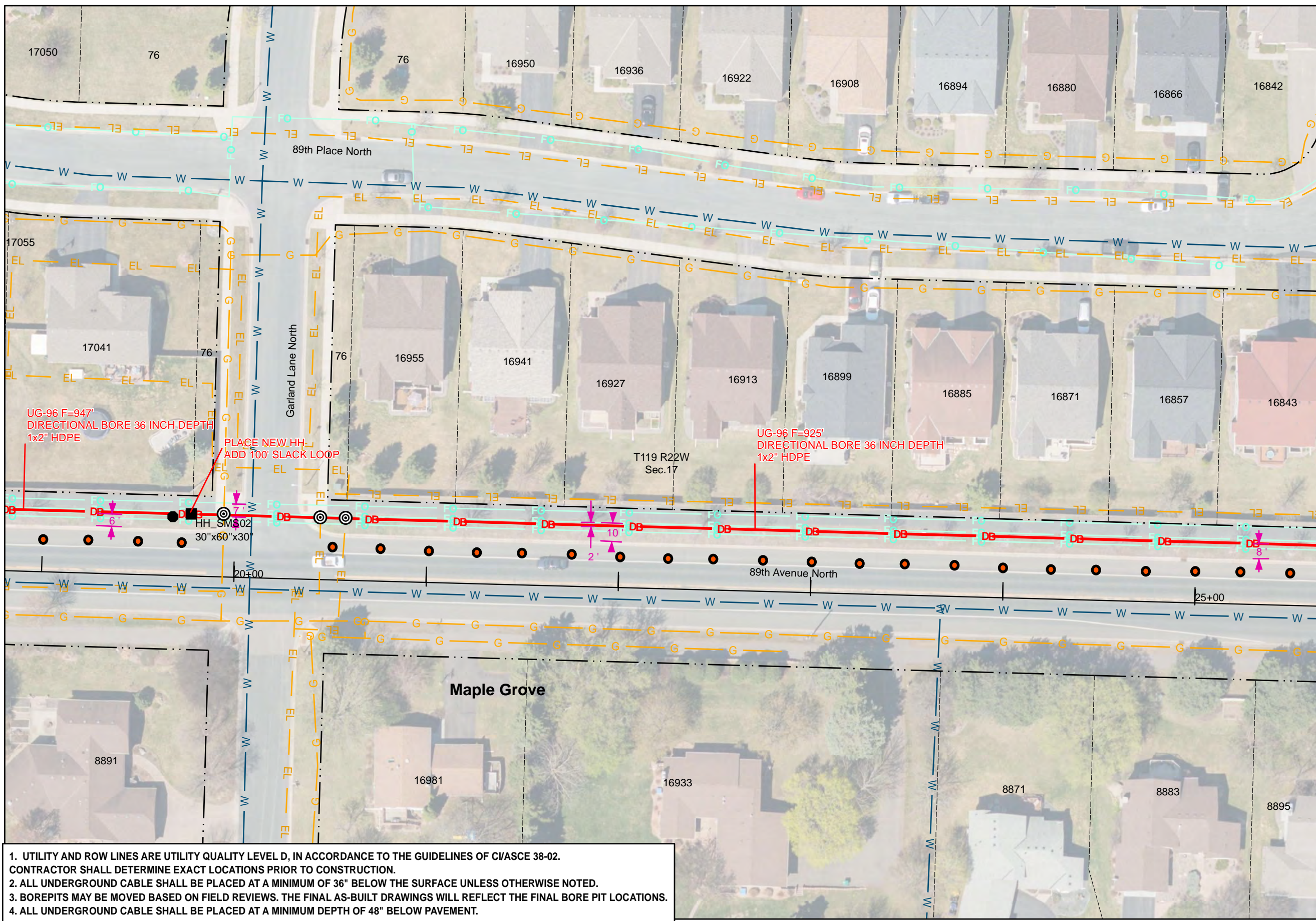
PROJECT: 1804BZDZ.2\_MPLG

MAPLE GROVE, MN

CLARIFICATION NO.	QUANTITY
C100	947
C110	
C120	
C200	
1x4" HDPE	
UG 48	
OVERPULL	
AER 864	
AER 432	
UG 864	
UG 432	
UG 288	
UG 144	
UG 96	1047
UG 72	
2" HDPE = C100	947
HH (24"x36"x24")	
HH (30"x60"x30")	1
WARNING SIGN	1
ANCHOR/GUY	
AER SLACK LOOP	
SPLICE CLOSURE	
(1) FUSION SPLICE	
(12) RIBBON SPLICE	
FDH	
MST	
MST LENGTH	

SEE SHEET 3

SEE SHEET 5



1. UTILITY AND ROW LINES ARE UTILITY QUALITY LEVEL D, IN ACCORDANCE TO THE GUIDELINES OF C/ASCE 38-02. CONTRACTOR SHALL DETERMINE EXACT LOCATIONS PRIOR TO CONSTRUCTION.
2. ALL UNDERGROUND CABLE SHALL BE PLACED AT A MINIMUM OF 36" BELOW THE SURFACE UNLESS OTHERWISE NOTED.
3. BOREPITS MAY BE MOVED BASED ON FIELD REVIEWS. THE FINAL AS-BUILT DRAWINGS WILL REFLECT THE FINAL BORE PIT LOCATIONS.
4. ALL UNDERGROUND CABLE SHALL BE PLACED AT A MINIMUM DEPTH OF 48" BELOW PAVEMENT.

MCI metro  
ACCESS TRANSMISSION SERVICES, LLC



OUTSIDE PLANT CONSTRUCTION  
TITLE: FIBER OPTIC CABLE ROUTE  
1804BZDZ.2\_MPLG

DATE: 2/22/2021

ENGINEER: KLJ

DRAWN BY: K. ZAVORAL

REVISIONS		
DATE:	DESCRIPTION	INITIAL

EXCEPT AS MAY BE OTHERWISE PROVIDED BY CONTRACT, THESE DRAWINGS AND SPECIFICATIONS SHALL REMAIN THE PROPERTY OF MCI COMMUNICATIONS SERVICES, INC., BOTH BEING ISSUED IN STRICT CONFIDENCE AND SHALL NOT BE REPRODUCED, COPIED, OR USED FOR ANY PURPOSE WITHOUT SPECIFIC WRITTEN PERMISSION.

SCALE	
HORIZONTAL: 1" = 50'	
VERTICAL: 1" = 50'	
MP	TO MP
SHEET 4	OF 10
FILE: MINNEAPOLIS_NetworkExtension	



SEE SHEET 6



PROJECT: 1804BZDZ.2\_MPLG

MAPLE GROVE, MN

CLARIFICATION NO.	QUANTITY
C100	925
C110	
C120	
C200	
1x4" HDPE	
UG 48	
OVERPULL	
AER 864	
AER 432	
UG 864	
UG 432	
UG 288	
UG 144	
UG 96	1025
UG 72	
2" HDPE = C100	925
HH (24"x36"x24")	
HH (30"x60"x30")	1
WARNING SIGN	1
ANCHOR/GUY	
AER SLACK LOOP	
SPLICE CLOSURE	
(1) FUSION SPLICE	
(12) RIBBON SPLICE	
FDH	
MST	
MST LENGTH	

MCI metro  
ACCESS TRANSMISSION SERVICES, LLC



OUTSIDE PLANT CONSTRUCTION  
TITLE: FIBER OPTIC CABLE ROUTE  
1804BZDZ.2\_MPLG

DATE: 2/22/2021

ENGINEER: KLJ

DRAWN BY: K. ZAVORAL

REVISIONS		
DATE:	DESCRIPTION	INITIAL

EXCEPT AS MAY BE OTHERWISE PROVIDED BY CONTRACT, THESE DRAWINGS AND SPECIFICATIONS SHALL REMAIN THE PROPERTY OF MCI COMMUNICATIONS SERVICES, INC., BOTH BEING ISSUED IN STRICT CONFIDENCE AND SHALL NOT BE REPRODUCED, COPIED, OR USED FOR ANY PURPOSE WITHOUT SPECIFIC WRITTEN PERMISSION.

SCALE

HORIZONTAL: 1" = 50'

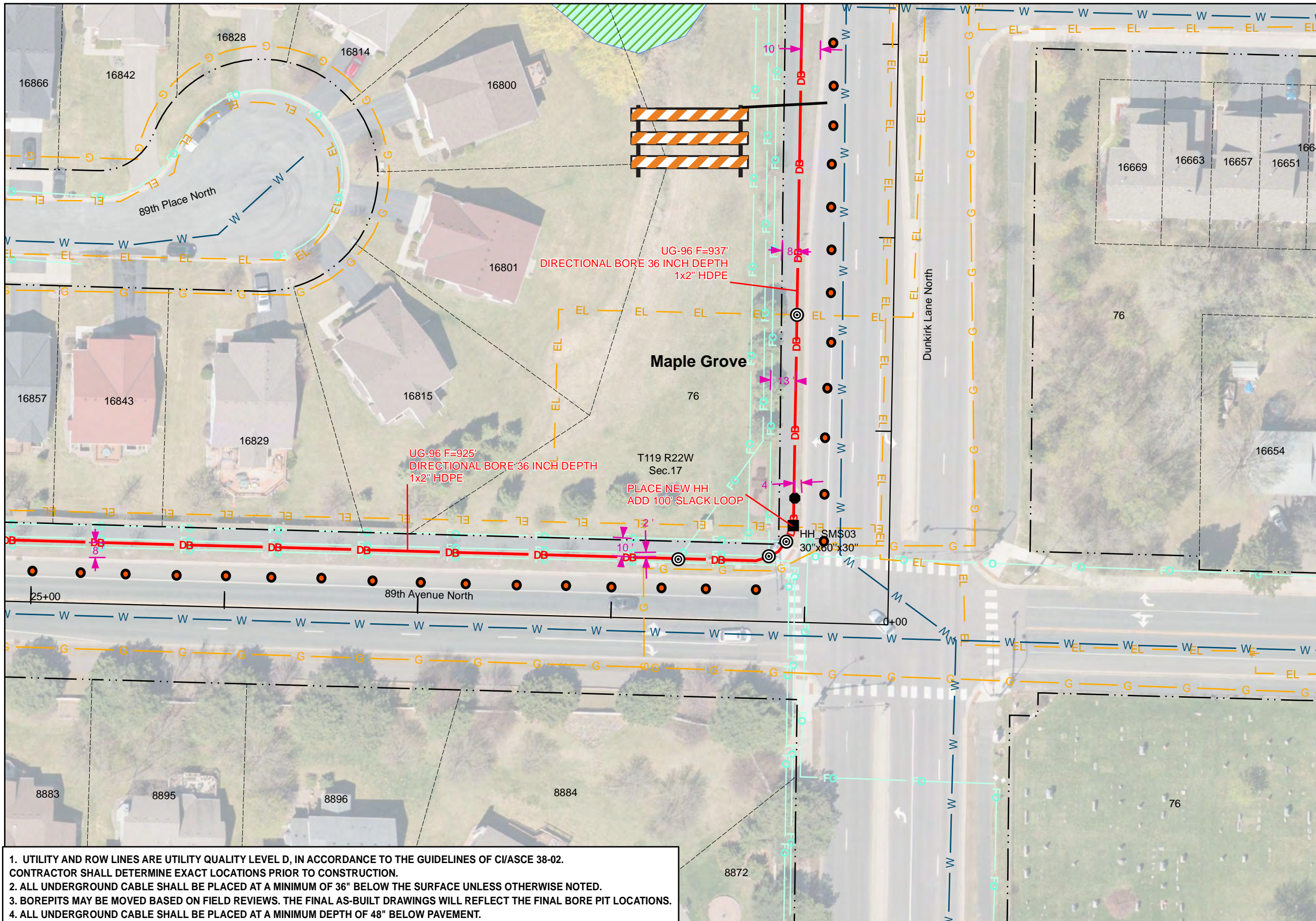
VERTICAL: 1" = 50'

MP \_\_\_\_\_ TO MP \_\_\_\_\_

SHEET 5 OF 10

FILE: MINNEAPOLIS\_NetworkExtension

SEE SHEET 4



1. UTILITY AND ROW LINES ARE UTILITY QUALITY LEVEL D, IN ACCORDANCE TO THE GUIDELINES OF C/ASCE 38-02. CONTRACTOR SHALL DETERMINE EXACT LOCATIONS PRIOR TO CONSTRUCTION.
2. ALL UNDERGROUND CABLE SHALL BE PLACED AT A MINIMUM OF 36" BELOW THE SURFACE UNLESS OTHERWISE NOTED.
3. BOREPITS MAY BE MOVED BASED ON FIELD REVIEWS. THE FINAL AS-BUILT DRAWINGS WILL REFLECT THE FINAL BORE PIT LOCATIONS.
4. ALL UNDERGROUND CABLE SHALL BE PLACED AT A MINIMUM DEPTH OF 48" BELOW PAVEMENT.





PROJECT: 1804BZDZ.2\_MPLG

MAPLE GROVE, MN

CLARIFICATION NO.	QUANTITY
C100	
C110	
C120	
C200	
1x4" HDPE	
UG 48	
OVERPULL	
AER 864	
AER 432	
UG 864	
UG 432	
UG 288	
UG 144	
UG 96	
UG 72	
2" HDPE = C100	
HH (24"x36"x24")	
HH (30"x60"x30")	
WARNING SIGN	
ANCHOR/GUY	
AER SLACK LOOP	
SPLICE CLOSURE	
(1) FUSION SPLICE	
(12) RIBBON SPLICE	
FDH	
MST	
MST LENGTH	

MCImetro  
ACCESS TRANSMISSION SERVICES, LLC



OUTSIDE PLANT CONSTRUCTION  
TITLE: FIBER OPTIC CABLE ROUTE  
1804BZDZ.2\_MPLG

DATE: 2/22/2021

ENGINEER: KLJ

DRAWN BY: K. ZAVORAL

REVISIONS		
DATE	DESCRIPTION	INITIAL

EXCEPT AS MAY BE OTHERWISE PROVIDED BY CONTRACT, THESE DRAWINGS AND SPECIFICATIONS SHALL REMAIN THE PROPERTY OF MCI COMMUNICATIONS SERVICES, INC., BOTH BEING ISSUED IN STRICT CONFIDENCE AND SHALL NOT BE REPRODUCED, COPIED, OR USED FOR ANY PURPOSE WITHOUT SPECIFIC WRITTEN PERMISSION.

SCALE

HORIZONTAL: 1" = 50'

VERTICAL: 1" = 50'

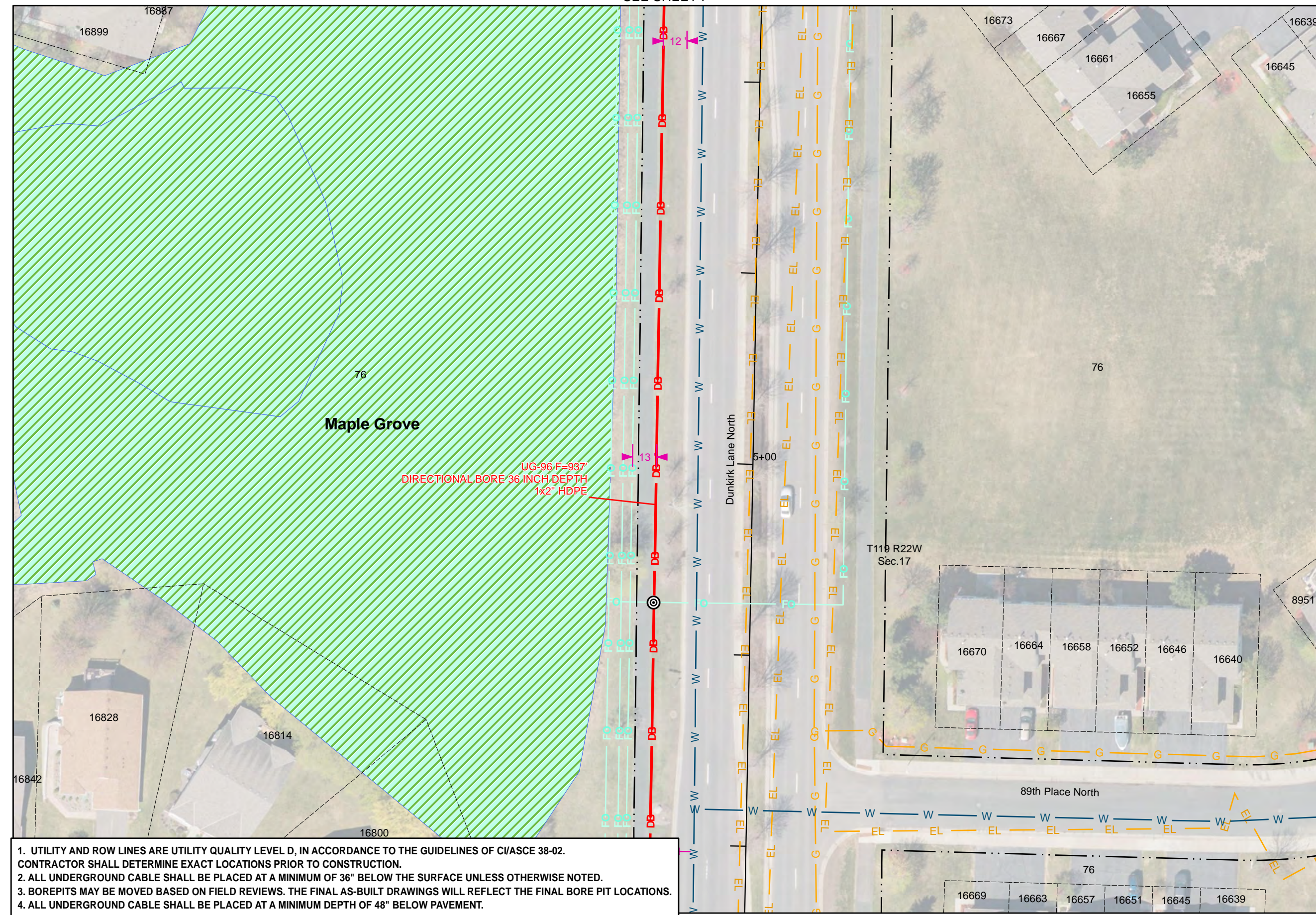
MP \_\_\_\_\_ TO MP \_\_\_\_\_

SHEET 6 OF 10

FILE: MINNEAPOLIS\_NetworkExtension

SEE SHEET 7

SEE SHEET 5



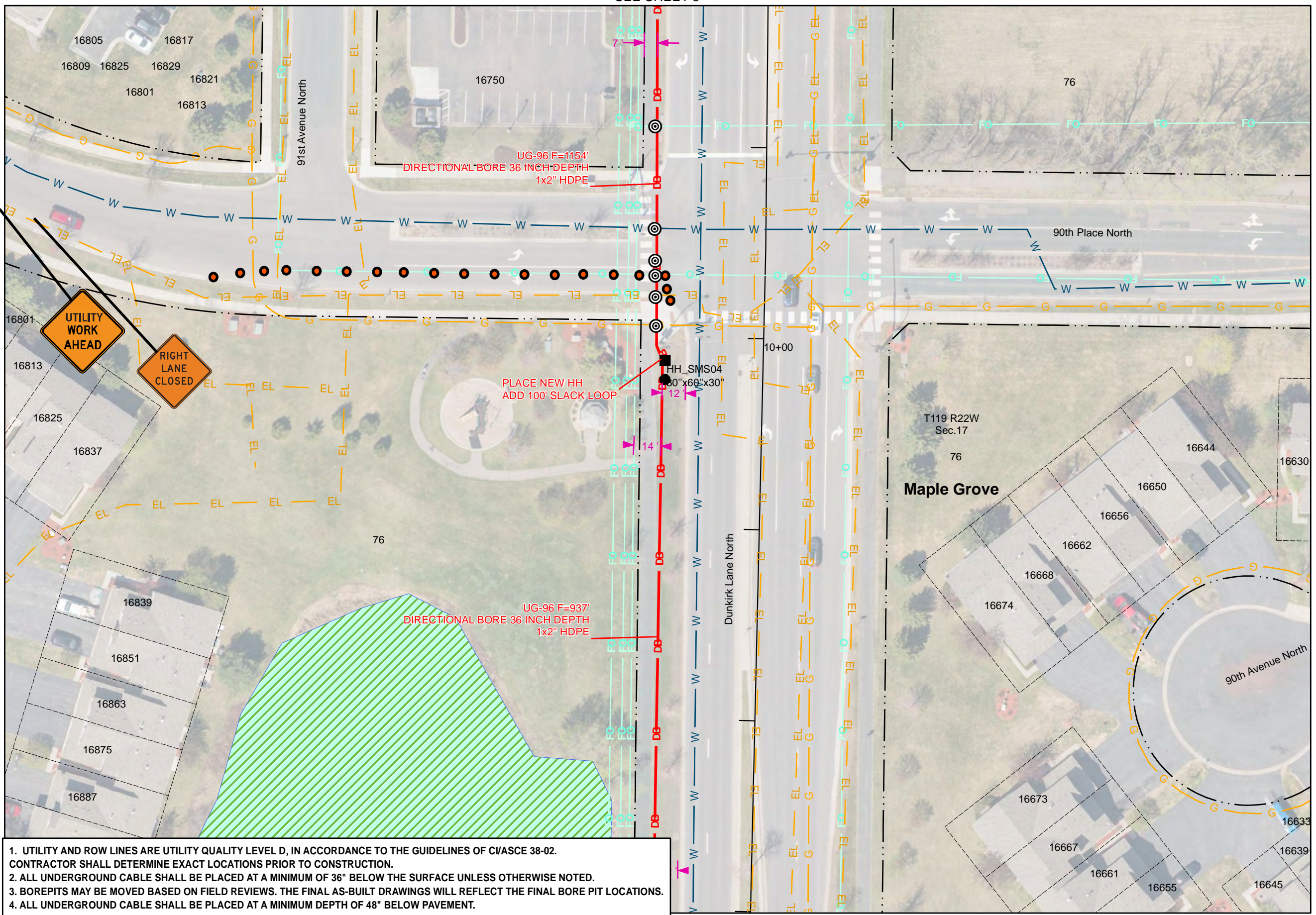
- UTILITY AND ROW LINES ARE UTILITY QUALITY LEVEL D, IN ACCORDANCE TO THE GUIDELINES OF CI/ASCE 38-02. CONTRACTOR SHALL DETERMINE EXACT LOCATIONS PRIOR TO CONSTRUCTION.
- ALL UNDERGROUND CABLE SHALL BE PLACED AT A MINIMUM OF 36" BELOW THE SURFACE UNLESS OTHERWISE NOTED.
- BOREPITS MAY BE MOVED BASED ON FIELD REVIEWS. THE FINAL AS-BUILT DRAWINGS WILL REFLECT THE FINAL BORE PIT LOCATIONS.
- ALL UNDERGROUND CABLE SHALL BE PLACED AT A MINIMUM DEPTH OF 48" BELOW PAVEMENT.






SEE SHEET 8

SEE SHEET 6



1. UTILITY AND ROW LINES ARE UTILITY QUALITY LEVEL D, IN ACCORDANCE TO THE GUIDELINES OF CI/ASCE 38-02. CONTRACTOR SHALL DETERMINE EXACT LOCATIONS PRIOR TO CONSTRUCTION.
2. ALL UNDERGROUND CABLE SHALL BE PLACED AT A MINIMUM OF 36" BELOW THE SURFACE UNLESS OTHERWISE NOTED.
3. BOREPITS MAY BE MOVED BASED ON FIELD REVIEWS. THE FINAL AS-BUILT DRAWINGS WILL REFLECT THE FINAL BORE PIT LOCATIONS.
4. ALL UNDERGROUND CABLE SHALL BE PLACED AT A MINIMUM DEPTH OF 48" BELOW PAVEMENT.




**PROJECT:** 1804BZDZ.2\_MPLG

MAPLE GROVE, MN

CLARIFICATION NO.	QUANTITY
C100	937
C110	
C120	
C200	
1x4" HDPE	
UG 48	
OVERPULL	
AER 864	
AER 432	
UG 864	
UG 432	
UG 288	
UG 144	
UG 96	1037
UG 72	
2" HDPE = C100	937
HH (24"x36"x24")	
HH (30"x60"x30")	1
WARNING SIGN	1
ANCHOR/GUY	
AER SLACK LOOP	
SPLICE CLOSURE	
(1) FUSION SPLICE	
(12) RIBBON SPLICE	
FDH	
MST	
MST LENGTH	

MCI metro

ACCESS TRANSMISSION SERVICES, LLC



OUTSIDE PLANT CONSTRUCTION

TITLE: FIBER OPTIC CABLE ROUTE

1804BZDZ.2\_MPLG

DATE: 2/22/2021

ENGINEER: KLJ

DRAWN BY: K. ZAVORAL

REVISIONS		
DATE:	DESCRIPTION	INITIAL

EXCEPT AS MAY BE OTHERWISE PROVIDED BY CONTRACT, THESE DRAWINGS AND SPECIFICATIONS SHALL REMAIN THE PROPERTY OF MCI COMMUNICATIONS SERVICES, INC., BOTH BEING ISSUED IN STRICT CONFIDENCE AND SHALL NOT BE REPRODUCED, COPIED, OR USED FOR ANY PURPOSE WITHOUT SPECIFIC WRITTEN PERMISSION.

SCALE

HORIZONTAL: 1" = 50'

VERTICAL: 1" = 50'

MP \_\_\_\_\_ TO MP \_\_\_\_\_

SHEET 7 OF 10

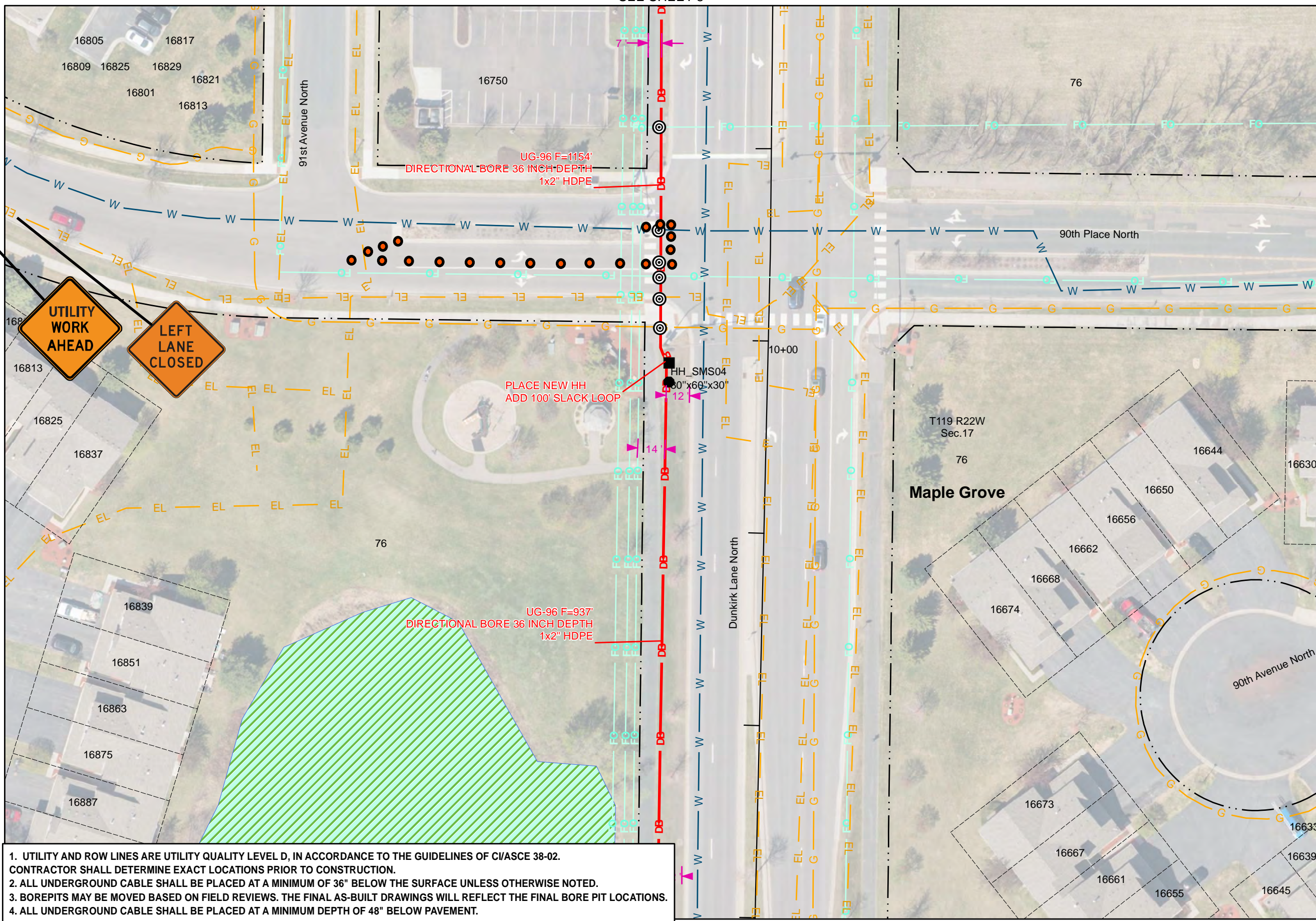
FILE: MINNEAPOLIS\_NetworkExtension





SEE SHEET 8

SEE SHEET 6



1. UTILITY AND ROW LINES ARE UTILITY QUALITY LEVEL D, IN ACCORDANCE TO THE GUIDELINES OF CI/ASCE 38-02. CONTRACTOR SHALL DETERMINE EXACT LOCATIONS PRIOR TO CONSTRUCTION.
2. ALL UNDERGROUND CABLE SHALL BE PLACED AT A MINIMUM OF 36" BELOW THE SURFACE UNLESS OTHERWISE NOTED.
3. BOREPITS MAY BE MOVED BASED ON FIELD REVIEWS. THE FINAL AS-BUILT DRAWINGS WILL REFLECT THE FINAL BORE PIT LOCATIONS.
4. ALL UNDERGROUND CABLE SHALL BE PLACED AT A MINIMUM DEPTH OF 48" BELOW PAVEMENT.



PROJECT: 1804BZDZ.2\_MPLG

MAPLE GROVE, MN

CLARIFICATION NO.	QUANTITY
C100	937
C110	
C120	
C200	
1x4" HDPE	
UG 48	
OVERPULL	
AER 864	
AER 432	
UG 864	
UG 432	
UG 288	
UG 144	
UG 96	1037
UG 72	
2" HDPE = C100	937
HH (24"x36"x24")	
HH (30"x60"x30")	1
WARNING SIGN	1
ANCHOR/GUY	
AER SLACK LOOP	
SPLICE CLOSURE	
(1) FUSION SPLICE	
(12) RIBBON SPLICE	
FDH	
MST	
MST LENGTH	

MCI metro  
ACCESS TRANSMISSION SERVICES, LLC

**MCI**

OUTSIDE PLANT CONSTRUCTION  
TITLE: FIBER OPTIC CABLE ROUTE  
1804BZDZ.2\_MPLG

DATE: 2/22/2021

ENGINEER: KLJ

DRAWN BY: K. ZAVORAL

REVISIONS		
DATE:	DESCRIPTION	INITIAL

EXCEPT AS MAY BE OTHERWISE PROVIDED BY CONTRACT, THESE DRAWINGS AND SPECIFICATIONS SHALL REMAIN THE PROPERTY OF MCI COMMUNICATIONS SERVICES, INC., BOTH BEING ISSUED IN STRICT CONFIDENCE AND SHALL NOT BE REPRODUCED, COPIED, OR USED FOR ANY PURPOSE WITHOUT SPECIFIC WRITTEN PERMISSION.

SCALE

HORIZONTAL: 1" = 50'

VERTICAL: 1" = 50'

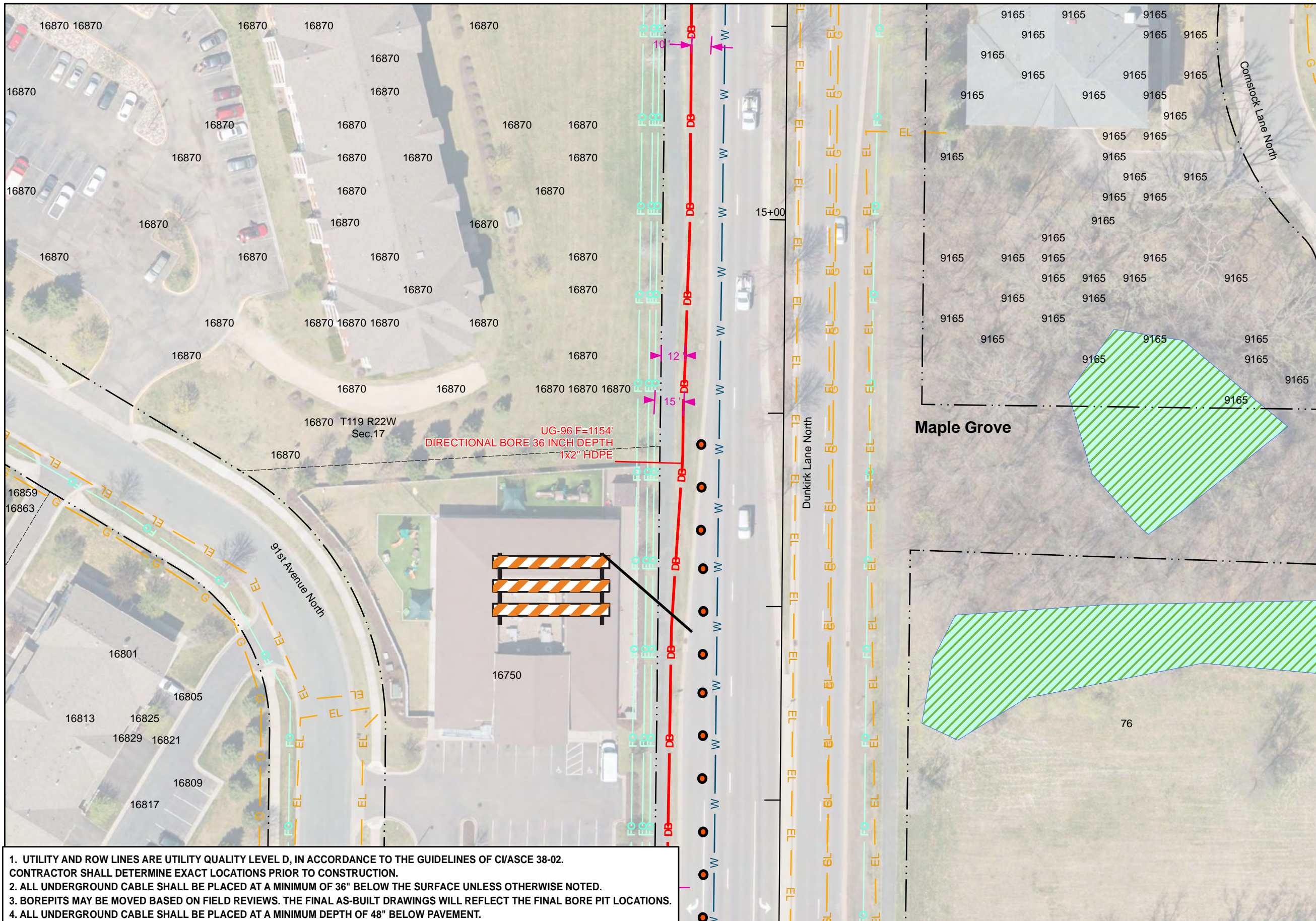
MP \_\_\_\_\_ TO MP \_\_\_\_\_

SHEET 7 OF 10

FILE: MINNEAPOLIS\_NetworkExtension



SEE SHEET 9



SEE SHEET 7

1. UTILITY AND ROW LINES ARE UTILITY QUALITY LEVEL D, IN ACCORDANCE TO THE GUIDELINES OF CI/ASCE 38-02. CONTRACTOR SHALL DETERMINE EXACT LOCATIONS PRIOR TO CONSTRUCTION.
2. ALL UNDERGROUND CABLE SHALL BE PLACED AT A MINIMUM OF 36" BELOW THE SURFACE UNLESS OTHERWISE NOTED.
3. BOREPITS MAY BE MOVED BASED ON FIELD REVIEWS. THE FINAL AS-BUILT DRAWINGS WILL REFLECT THE FINAL BORE PIT LOCATIONS.
4. ALL UNDERGROUND CABLE SHALL BE PLACED AT A MINIMUM DEPTH OF 48" BELOW PAVEMENT.



PROJECT: 1804BZDZ.2\_MPLG

MAPLE GROVE, MN

CLARIFICATION NO.	QUANTITY
C100	
C110	
C120	
C200	
1x4" HDPE	
UG 48	
OVERPULL	
AER 864	
AER 432	
UG 864	
UG 432	
UG 288	
UG 144	
UG 96	
UG 72	
2" HDPE = C100	
HH (24"x36"x24")	
HH (30"x60"x30")	
WARNING SIGN	
ANCHOR/GUY	
AER SLACK LOOP	
SPLICE CLOSURE	
(1) FUSION SPLICE	
(12) RIBBON SPLICE	
FDH	
MST	
MST LENGTH	

MCImetro  
ACCESS TRANSMISSION SERVICES, LLC



OUTSIDE PLANT CONSTRUCTION  
TITLE: FIBER OPTIC CABLE ROUTE  
1804BZDZ.2\_MPLG

DATE: 2/22/2021

ENGINEER: KLJ

DRAWN BY: K. ZAVORAL

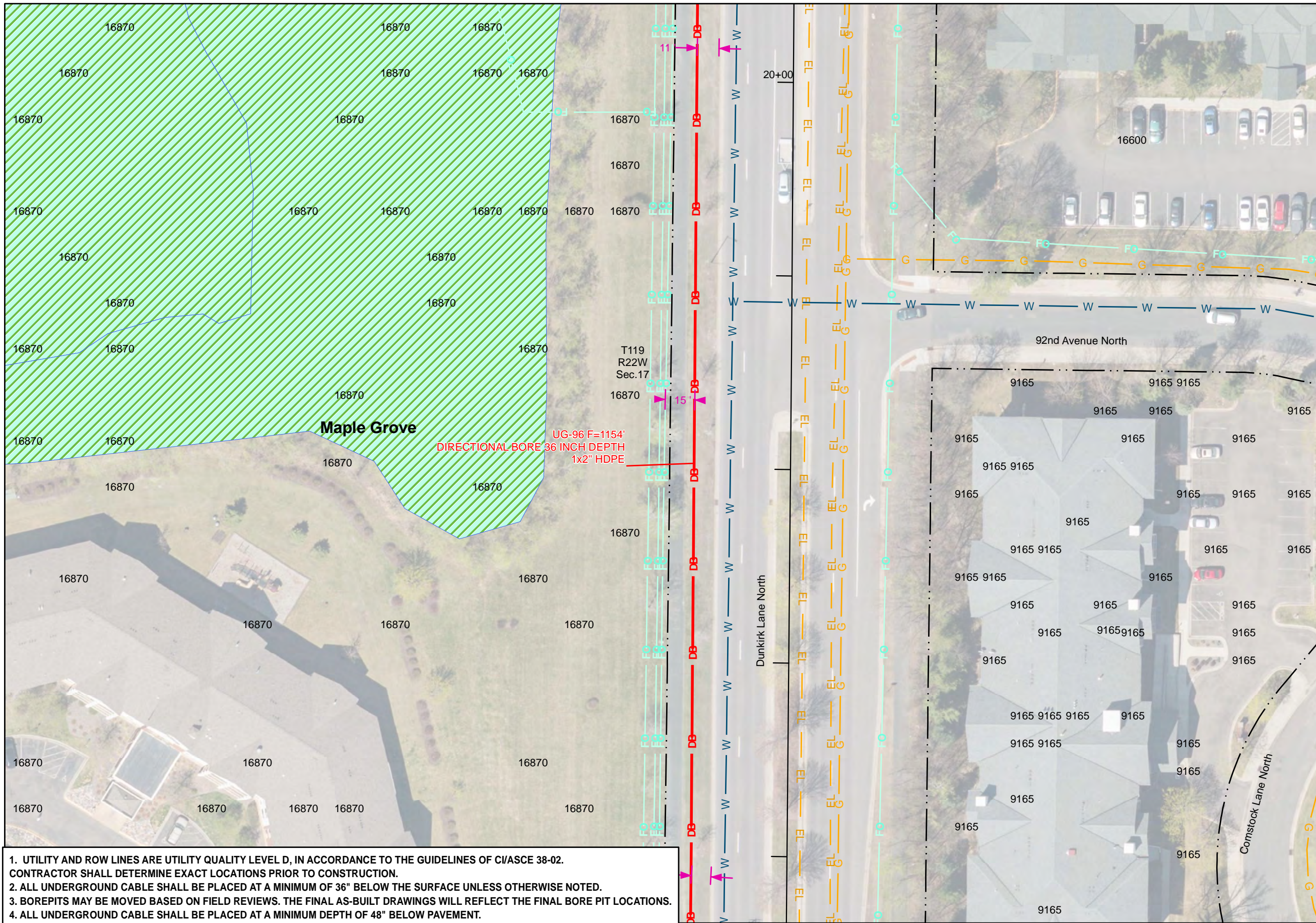
REVISIONS		
DATE:	DESCRIPTION	INITIAL

EXCEPT AS MAY BE OTHERWISE PROVIDED BY CONTRACT, THESE DRAWINGS AND SPECIFICATIONS SHALL REMAIN THE PROPERTY OF MCI COMMUNICATIONS SERVICES, INC., BOTH BEING ISSUED IN STRICT CONFIDENCE AND SHALL NOT BE REPRODUCED, COPIED, OR USED FOR ANY PURPOSE WITHOUT SPECIFIC WRITTEN PERMISSION.

SCALE  
 HORIZONTAL: 1" = 50'  
 VERTICAL: 1" = 50'  
 MP \_\_\_\_\_ TO MP \_\_\_\_\_  
 SHEET 8 OF 10  
 FILE: MINNEAPOLIS\_NetworkExtension



SEE SHEET 10



1. UTILITY AND ROW LINES ARE UTILITY QUALITY LEVEL D, IN ACCORDANCE TO THE GUIDELINES OF CI/ASCE 38-02. CONTRACTOR SHALL DETERMINE EXACT LOCATIONS PRIOR TO CONSTRUCTION.
2. ALL UNDERGROUND CABLE SHALL BE PLACED AT A MINIMUM OF 36" BELOW THE SURFACE UNLESS OTHERWISE NOTED.
3. BOREPITS MAY BE MOVED BASED ON FIELD REVIEWS. THE FINAL AS-BUILT DRAWINGS WILL REFLECT THE FINAL BORE PIT LOCATIONS.
4. ALL UNDERGROUND CABLE SHALL BE PLACED AT A MINIMUM DEPTH OF 48" BELOW PAVEMENT.

SEE SHEET 8



PROJECT: 1804BZDZ.2\_MPLG

MAPLE GROVE, MN

CLARIFICATION NO.	QUANTITY
C100	
C110	
C120	
C200	
1x4" HDPE	
UG 48	
OVERPULL	
AER 864	
AER 432	
UG 864	
UG 432	
UG 288	
UG 144	
UG 96	
UG 72	
2" HDPE = C100	
HH (24"x36"x24")	
HH (30"x60"x30")	
WARNING SIGN	
ANCHOR/GUY	
AER SLACK LOOP	
SPLICE CLOSURE	
(1) FUSION SPLICE	
(12) RIBBON SPLICE	
FDH	
MST	
MST LENGTH	

MCI metro  
ACCESS TRANSMISSION SERVICES, LLC



OUTSIDE PLANT CONSTRUCTION  
TITLE: FIBER OPTIC CABLE ROUTE  
1804BZDZ.2\_MPLG

DATE: 2/22/2021

ENGINEER: KLJ

DRAWN BY: K. ZAVORAL

REVISIONS		
DATE	DESCRIPTION	INITIAL

EXCEPT AS MAY BE OTHERWISE PROVIDED BY CONTRACT, THESE DRAWINGS AND SPECIFICATIONS SHALL REMAIN THE PROPERTY OF MCI COMMUNICATIONS SERVICES, INC., BOTH BEING ISSUED IN STRICT CONFIDENCE AND SHALL NOT BE REPRODUCED, COPIED, OR USED FOR ANY PURPOSE WITHOUT SPECIFIC WRITTEN PERMISSION.

SCALE

HORIZONTAL: 1" = 50'

VERTICAL: 1" = 50'

MP \_\_\_\_\_ TO MP \_\_\_\_\_

SHEET 9 OF 10

FILE: MINNEAPOLIS\_NetworkExtension





PROJECT: 1804BZDZ.2\_MPLG

MAPLE GROVE, MN

CLARIFICATION NO.	QUANTITY
C100	1154
C110	
C120	
C200	
1x4" HDPE	
UG 48	
OVERPULL	
AER 864	
AER 432	
UG 864	
UG 432	
UG 288	
UG 144	
UG 96	1254
UG 72	
2" HDPE = C100	1154
HH (24"x36"x24")	
HH (30"x60"x30")	1
WARNING SIGN	1
ANCHOR/GUY	
AER SLACK LOOP	
SPLICE CLOSURE	
(1) FUSION SPLICE	
(12) RIBBON SPLICE	
FDH	
MST	
MST LENGTH	

MCImetro  
ACCESS TRANSMISSION SERVICES, LLC



OUTSIDE PLANT CONSTRUCTION  
TITLE: FIBER OPTIC CABLE ROUTE  
1804BZDZ.2\_MPLG

DATE: 2/22/2021

ENGINEER: KLJ

DRAWN BY: K. ZAVORAL

REVISIONS		
DATE:	DESCRIPTION	INITIAL

EXCEPT AS MAY BE OTHERWISE PROVIDED BY CONTRACT, THESE DRAWINGS AND SPECIFICATIONS SHALL REMAIN THE PROPERTY OF MCI COMMUNICATIONS SERVICES, INC., BOTH BEING ISSUED IN STRICT CONFIDENCE AND SHALL NOT BE REPRODUCED, COPIED, OR USED FOR ANY PURPOSE WITHOUT SPECIFIC WRITTEN PERMISSION.

SCALE

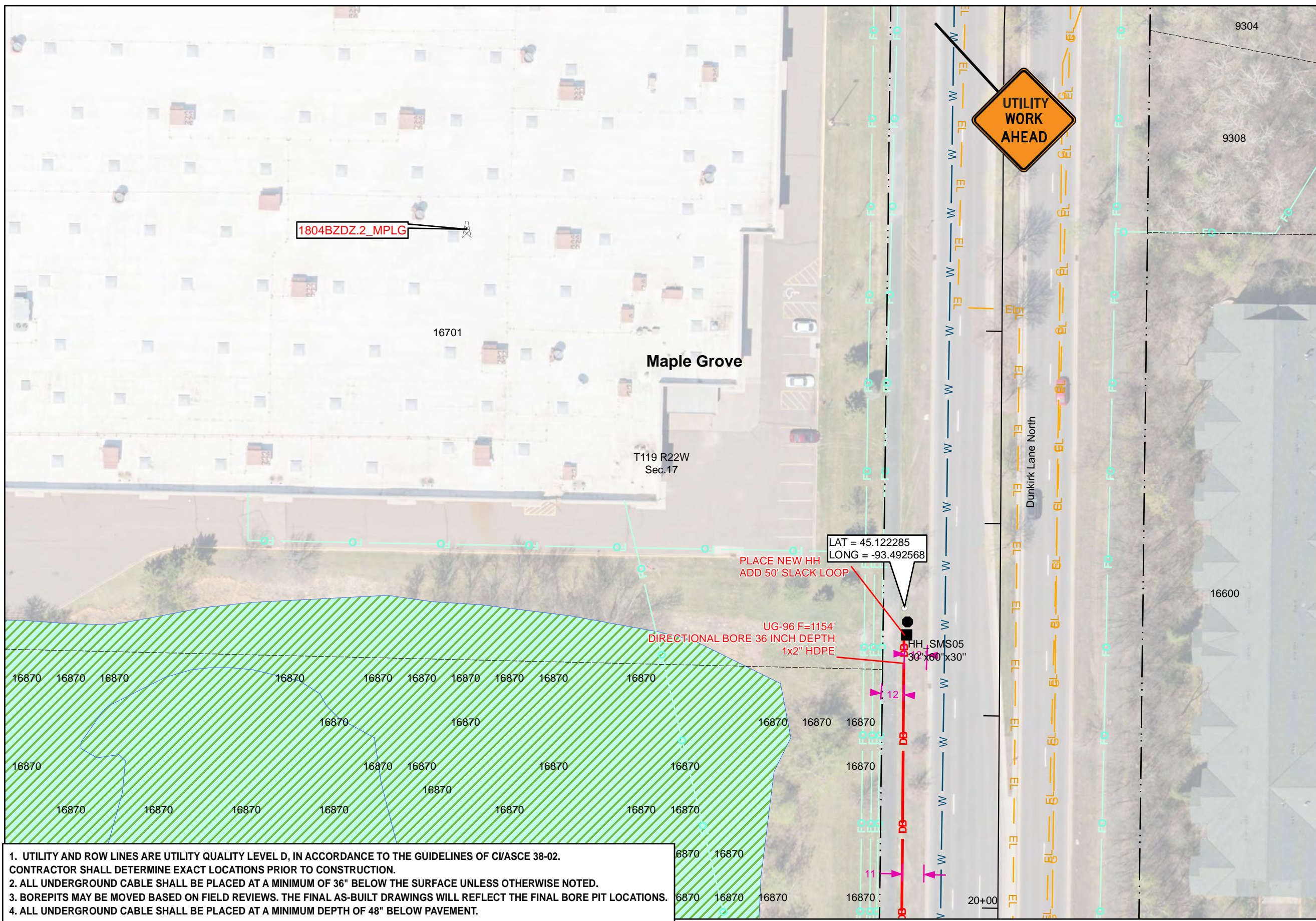
HORIZONTAL: 1" = 50'

VERTICAL: 1" = 50'

MP \_\_\_\_\_ TO MP \_\_\_\_\_

SHEET 10 OF 10

FILE: MINNEAPOLIS\_NetworkExtension



- UTILITY AND ROW LINES ARE UTILITY QUALITY LEVEL D, IN ACCORDANCE TO THE GUIDELINES OF CI/ASCE 38-02. CONTRACTOR SHALL DETERMINE EXACT LOCATIONS PRIOR TO CONSTRUCTION.
- ALL UNDERGROUND CABLE SHALL BE PLACED AT A MINIMUM OF 36" BELOW THE SURFACE UNLESS OTHERWISE NOTED.
- BOREPITS MAY BE MOVED BASED ON FIELD REVIEWS. THE FINAL AS-BUILT DRAWINGS WILL REFLECT THE FINAL BORE PIT LOCATIONS.
- ALL UNDERGROUND CABLE SHALL BE PLACED AT A MINIMUM DEPTH OF 48" BELOW PAVEMENT.

SEE SHEET 9