



# ACCESS TRANSMISSION SERVICES CORP D/B/A VERIZON ACCESS TRANSMISSION

**OUTSIDE PLANT CONSTRUCTION  
FIBER OPTIC CABLE ROUTE**

## **CITY OF MAPLE GROVE ROW PERMIT MAPLE GROVE, MINNESOTA**

PERMIT1804BZDZ.2\_MPLG: BEGINNING NEAR THE INTERSECTION WITH 89TH AVENUE N. AND LAWINDALE LANE N., PROCEEDING ON 89TH AVENUE N. TO DUNKIRK LANE N., PROCEEDING NORTH ON DUNKIRK LANE TO BEHIND 16701 94TH AVENUE N. JUST NORTH OF THE INTERSECTION WITH 92ND AVENUE N.

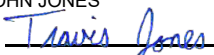


Know what's below.  
Call **811** before you dig.

**PERMIT STATUS: ISSUED FOR PERMITTING**

**DATE: 03/25/2021**

**RESUBMITTED:06/04/2021**

I hereby certify that this plan, specification, or report was prepared by me or under my direct supervision and that I am a duly Licensed Professional Engineer under the laws of the State of Minnesota.  
TRAVIS JOHN JONES  
Signature:   
Date: 06/04/2021 License # 54688

PREPARED BY  
KLJ ENGINEERING,LLC  
370 WABASHA STREET N.  
SUITE 300  
ST. PAUL, MINNESOTA 55102  
PHONE (651)222-2176











# LOCATION MAP



PROJECT: 1804BZDZ.2\_MPLG

MAPLE GROVE, MN

CLARIFICATION NO.	QUANTITY
C100	
C101	
C102	
C104 (24x36)	
C105 (30x60)	
C106	
C107	
C108	
C110	
C111	
C112	
C114	
C115	
C200	
C300	
C301	
C302	
C303	
C304	
C103	

MCImetro  
ACCESS TRANSMISSION SERVICES, LLC

**MCI**

OUTSIDE PLANT CONSTRUCTION  
TITLE: FIBER OPTIC CABLE ROUTE  
1804BZDZ.2\_MPLG

DATE: 3/18/2021  
ENGINEER: KLJ  
DRAWN BY: K. ZAVORAL

REVISIONS		
DATE:	DESCRIPTION	INITIAL

EXCEPT AS MAY BE OTHERWISE PROVIDED BY CONTRACT, THESE DRAWINGS AND SPECIFICATIONS SHALL REMAIN THE PROPERTY OF MCI COMMUNICATIONS SERVICES, INC., BOTH BEING ISSUED IN STRICT CONFIDENCE AND SHALL NOT BE REPRODUCED, COPIED, OR USED FOR ANY PURPOSE WITHOUT SPECIFIC WRITTEN PERMISSION.

SCALE

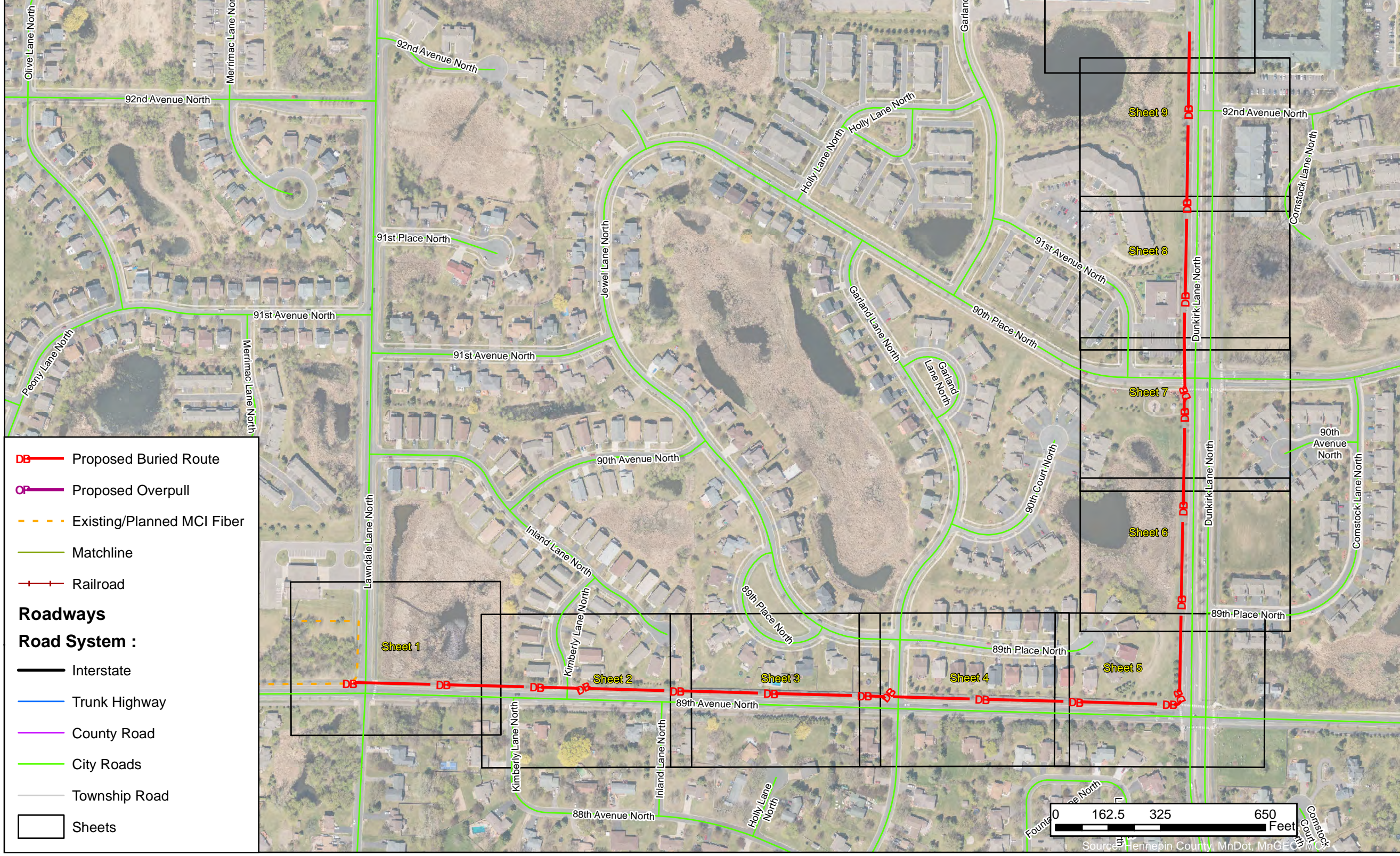
HORIZONTAL:  
VERTICAL:

MP \_\_\_\_\_ TO MP \_\_\_\_\_

SHEET A-5 OF A-6

FILE: MINNEAPOLIS\_NetworkExtension

I hereby certify that this plan, specification, or report was prepared by me or under my direct supervision and that I am a duly Licensed Professional Engineer under the laws of the State of Minnesota.  
TRAVIS JOHN JONES  
Signature: *Travis Jones*  
Date: 06/04/2021 License # 54688



- DB** — Proposed Buried Route
  - OP** — Proposed Overpull
  - Existing/Planned MCI Fiber
  - Matchline
  - Railroad
- Roadways**
- Road System :**
- Interstate
  - Trunk Highway
  - County Road
  - City Roads
  - Township Road
  - Sheets





PROJECT: 1804BZDZ.2\_MPLG

MAPLE GROVE, MN

# Legend

	DIRECT BURIED HDPE - NEW		HANDHOLE - NEW
	DIRECT BURIED HDPE - EXISTING / PLANNED MCI		HANDHOLE - EXISTING
	AERIAL CABLE - EXISTING / PLANNED MCI FIBER		MAN HOLE
	OVERPULL FIBER		SLACK LOOP
	STATION LINE		FIRE HYDRANT
	RIGHT-OF-WAY		POWER POLE
	SECTION LINE		SPLICE CLOSURE - NEW
	PARCEL LINE		SPLICE CLOSURE - EXISTING
	CITY BOUNDARY LINE		WARNING SIGN
	COUNTY OR STATE BOUNDARY LINE		BORE HOLE
	SANITARY SEWER LINE		UTILITY POT HOLE
	STORM SEWER LINE		STORMWATER INLET
	WATER LINE		GAS VALVE
	GAS		WATER VALVE
	FIBER OPTIC		SANITARY MANHOLE
	POWER		STORM MANHOLE
	STREET LIGHTS		HUB
	EMPTY LIGHT CONDUIT		TOWER
	DISTRICT ENERGY		FLOODPLAINS
	MnDOT ROW		DNR WETLANDS
	RAILROAD		
	CULVERT / DRAINAGE		
	SWPP		

- UTILITY AND ROW LINES ARE APPROXIMATE. CONTRACTOR SHALL DETERMINE EXACT LOCATIONS PRIOR TO CONSTRUCTION.
- ALL UNDERGROUND CABLE SHALL BE PLACED AT A MINIMUM DEPTH OF 36" BELOW THE SURFACE UNLESS OTHERWISE NOTED.
- BORE PITS MAY BE MOVED BASED ON FIELD REVIEWS. THE FINAL AS-BUILT DRAWINGS WILL REFLECT THE FINAL BORE PIT LOCATIONS.
- ALL UNDERGROUND CABLE SHALL BE PLACED AT A MINIMUM DEPTH OF 48" BELOW PAVEMENT.

I hereby certify that this plan, specification, or report was prepared by me or under my direct supervision and that I am a duly Licensed Professional Engineer under the laws of the State of Minnesota.  
 TRAVIS JOHN JONES  
 Signature:   
 Date: 06/04/2021 License # 54688

CLARIFICATION NO.	QUANTITY
C100	
C101	
C102	
C104 (24x36)	
C105 (30x60)	
C106	
C107	
C108	
C110	
C111	
C112	
C114	
C115	
C200	
C300	
C301	
C302	
C303	
C304	
C103	

MCI metro  
 ACCESS TRANSMISSION SERVICES, LLC  
  
 OUTSIDE PLANT CONSTRUCTION

DATE: 01/29/2021  
 ENGINEER: KLJ

DRAWN BY: N. WALLENTA

REVISIONS		
DATE:	DESCRIPTION	INITIAL

EXCEPT AS MAY BE OTHERWISE PROVIDED BY CONTRACT, THESE DRAWINGS AND SPECIFICATIONS SHALL REMAIN THE PROPERTY OF MCI COMMUNICATIONS SERVICES, INC.. BOTH BEING ISSUED IN STRICT CONFIDENCE AND SHALL NOT BE REPRODUCED, COPIED, OR USED FOR ANY PURPOSE WITHOUT SPECIFIC WRITTEN PERMISSION.

SCALE  
 HORIZONTAL:  
 VERTICAL:  
 MP \_\_\_\_\_ TO MP \_\_\_\_\_  
 SHEET A-6 OF A-6  
 FILE: MINNEAPOLIS\_Legend\_SIPaul







PROJECT: 1804BZDZ.2\_MPLG

MAPLE GROVE, MN

CLARIFICATION NO.	QUANTITY
C100	726
C110	
C120	
C200	
1x4" HDPE	
UG 48	
OVERPULL	
AER 864	
AER 432	
UG 864	
UG 432	
UG 288	
UG 144	
UG 96	826
UG 72	
2" HDPE = C100	726
HH (24"x36"x24")	
HH (30"x60"x30")	1
WARNING SIGN	1
ANCHOR/GUY	
AER SLACK LOOP	
SPLICE CLOSURE	
(1) FUSION SPLICE	
(12) RIBBON SPLICE	
FDH	
MST	
MST LENGTH	

MCI metro  
ACCESS TRANSMISSION SERVICES, LLC



OUTSIDE PLANT CONSTRUCTION  
TITLE: FIBER OPTIC CABLE ROUTE  
1804BZDZ.2\_MPLG

DATE: 2/22/2021

ENGINEER: KLJ

DRAWN BY: K. ZAVORAL

REVISIONS		
DATE:	DESCRIPTION	INITIAL

EXCEPT AS MAY BE OTHERWISE PROVIDED BY CONTRACT, THESE DRAWINGS AND SPECIFICATIONS SHALL REMAIN THE PROPERTY OF MCI COMMUNICATIONS SERVICES, INC., BOTH BEING ISSUED IN STRICT CONFIDENCE AND SHALL NOT BE REPRODUCED, COPIED, OR USED FOR ANY PURPOSE WITHOUT SPECIFIC WRITTEN PERMISSION.

SCALE

HORIZONTAL: 1" = 50'

VERTICAL: 1" = 50'

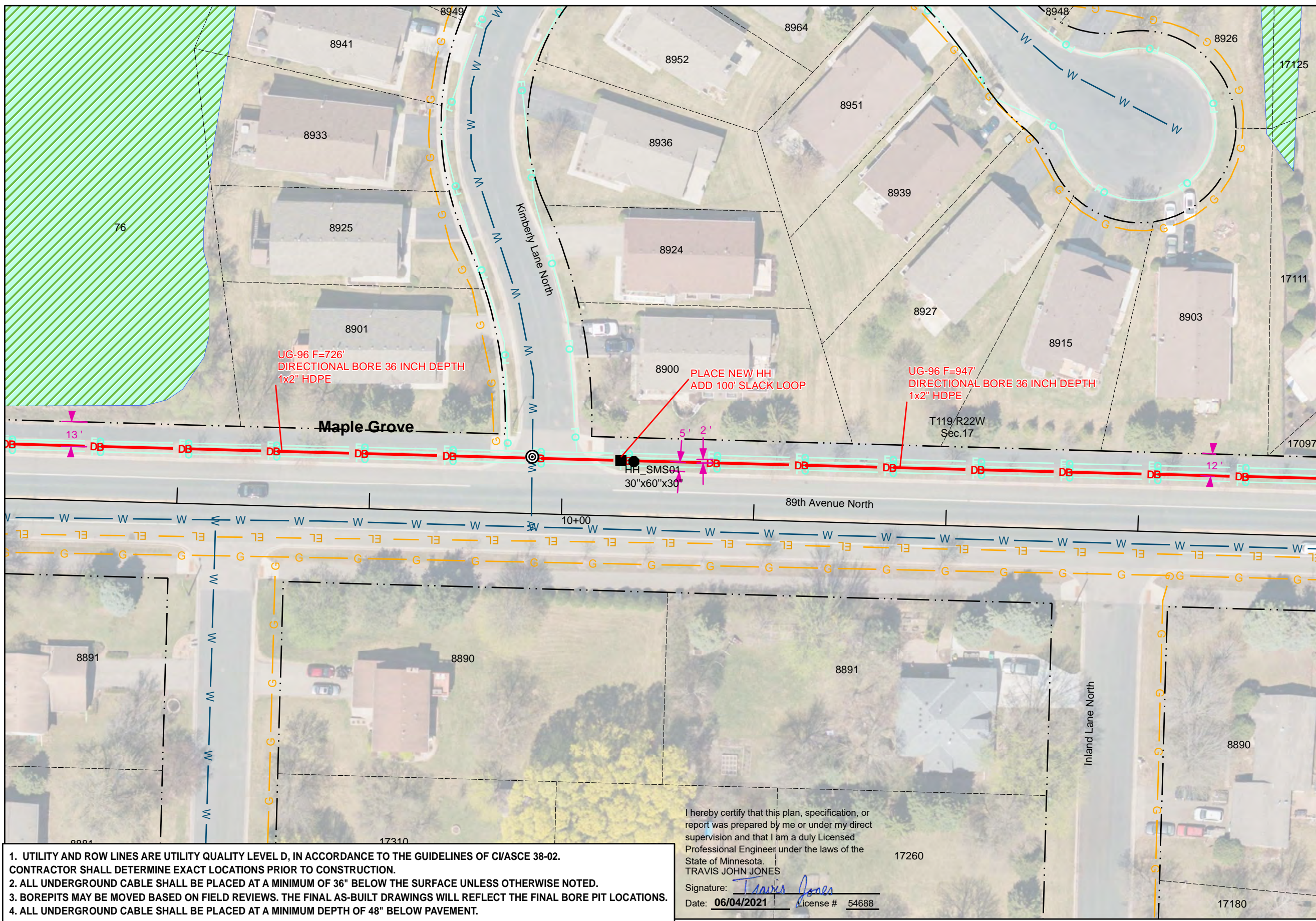
MP \_\_\_\_\_ TO MP \_\_\_\_\_

SHEET 2 OF 10

FILE: MINNEAPOLIS\_NetworkExtension

SEE SHEET 1

SEE SHEET 3



- UTILITY AND ROW LINES ARE UTILITY QUALITY LEVEL D, IN ACCORDANCE TO THE GUIDELINES OF C/ASCE 38-02. CONTRACTOR SHALL DETERMINE EXACT LOCATIONS PRIOR TO CONSTRUCTION.
- ALL UNDERGROUND CABLE SHALL BE PLACED AT A MINIMUM OF 36" BELOW THE SURFACE UNLESS OTHERWISE NOTED.
- BOREPITS MAY BE MOVED BASED ON FIELD REVIEWS. THE FINAL AS-BUILT DRAWINGS WILL REFLECT THE FINAL BORE PIT LOCATIONS.
- ALL UNDERGROUND CABLE SHALL BE PLACED AT A MINIMUM DEPTH OF 48" BELOW PAVEMENT.

I hereby certify that this plan, specification, or report was prepared by me or under my direct supervision and that I am a duly Licensed Professional Engineer under the laws of the State of Minnesota.  
 TRAVIS JOHN JONES  
 Signature: *Travis Jones*  
 Date: 06/04/2021 License # 54688





PROJECT: 1804BZDZ.2\_MPLG

MAPLE GROVE, MN

CLARIFICATION NO.	QUANTITY
C100	
C110	
C120	
C200	
1x4" HDPE	
UG 48	
OVERPULL	
AER 864	
AER 432	
UG 864	
UG 432	
UG 288	
UG 144	
UG 96	
UG 72	
2" HDPE = C100	
HH (24"x36"x24")	
HH (30"x60"x30")	
WARNING SIGN	
ANCHOR/GUY	
AER SLACK LOOP	
SPLICE CLOSURE	
(1) FUSION SPLICE	
(12) RIBBON SPLICE	
FDH	
MST	
MST LENGTH	

McImetro  
ACCESS TRANSMISSION SERVICES, LLC



OUTSIDE PLANT CONSTRUCTION

TITLE: FIBER OPTIC CABLE ROUTE

1804BZDZ.2\_MPLG

DATE: 2/22/2021

ENGINEER: KLJ

DRAWN BY: K. ZAVORAL

REVISIONS		
DATE	DESCRIPTION	INITIAL

EXCEPT AS MAY BE OTHERWISE PROVIDED BY CONTRACT, THESE DRAWINGS AND SPECIFICATIONS SHALL REMAIN THE PROPERTY OF MCI COMMUNICATIONS SERVICES, INC., BOTH BEING ISSUED IN STRICT CONFIDENCE AND SHALL NOT BE REPRODUCED, COPIED, OR USED FOR ANY PURPOSE WITHOUT SPECIFIC WRITTEN PERMISSION.

SCALE

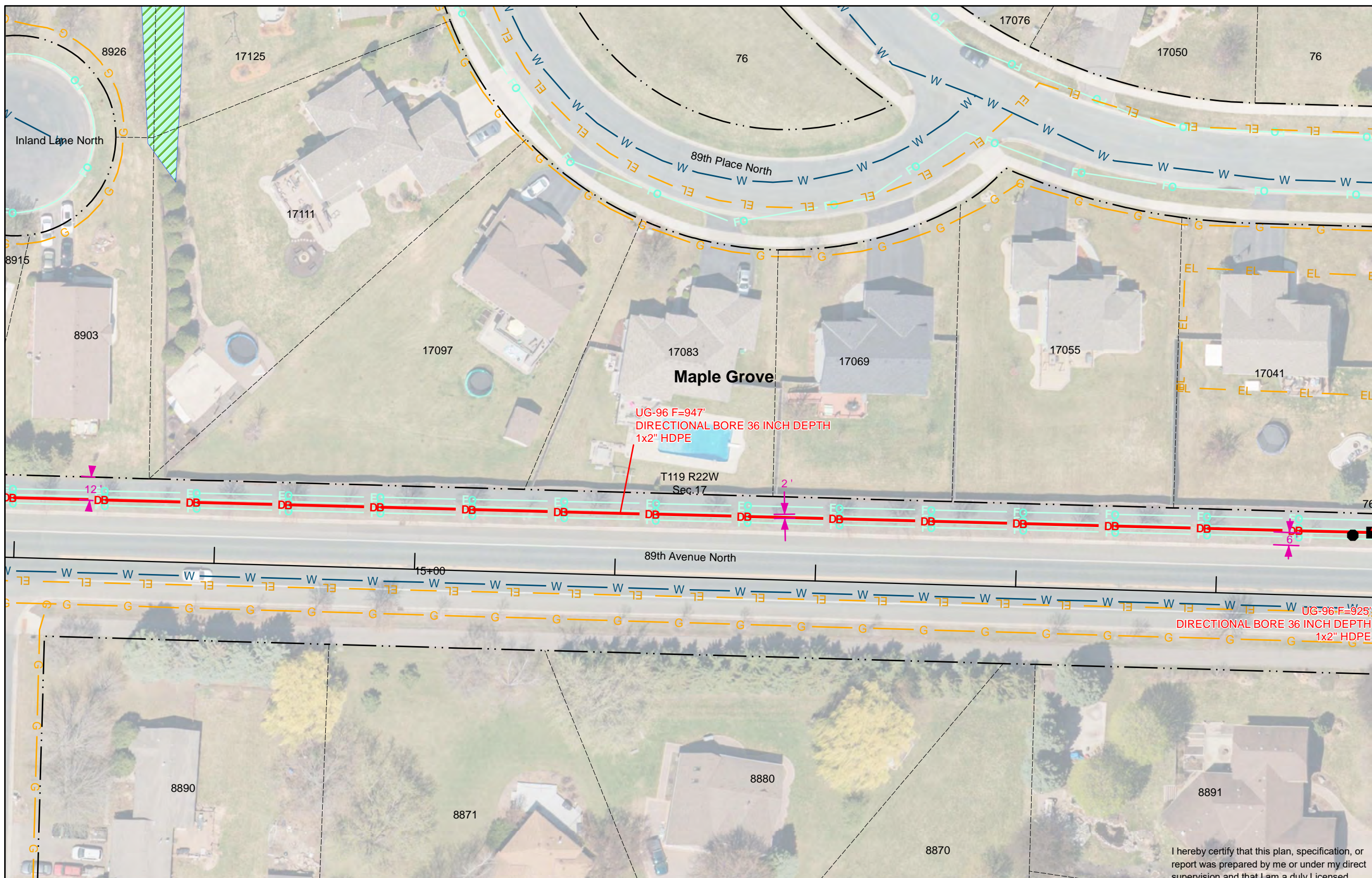
HORIZONTAL: 1" = 50'

VERTICAL: 1" = 50'

MP \_\_\_\_\_ TO MP \_\_\_\_\_

SHEET 3 OF 10

FILE: MINNEAPOLIS\_NetworkExtension



SEE SHEET 2

SEE SHEET 4

- UTILITY AND ROW LINES ARE UTILITY QUALITY LEVEL D, IN ACCORDANCE TO THE GUIDELINES OF CI/ASCE 38-02. CONTRACTOR SHALL DETERMINE EXACT LOCATIONS PRIOR TO CONSTRUCTION.
- ALL UNDERGROUND CABLE SHALL BE PLACED AT A MINIMUM OF 36" BELOW THE SURFACE UNLESS OTHERWISE NOTED.
- BOREPITS MAY BE MOVED BASED ON FIELD REVIEWS. THE FINAL AS-BUILT DRAWINGS WILL REFLECT THE FINAL BORE PIT LOCATIONS.
- ALL UNDERGROUND CABLE SHALL BE PLACED AT A MINIMUM DEPTH OF 48" BELOW PAVEMENT.

I hereby certify that this plan, specification, or report was prepared by me or under my direct supervision and that I am a duly Licensed Professional Engineer under the laws of the State of Minnesota.  
 TRAVIS JOHN JONES  
 Signature: *Travis Jones*  
 Date: 06/04/2021 License # 54688







SEE SHEET 6



PROJECT: 1804BZDZ.2\_MPLG

MAPLE GROVE, MN

CLARIFICATION NO.	QUANTITY
C100	925
C110	
C120	
C200	
1x4" HDPE	
UG 48	
OVERPULL	
AER 864	
AER 432	
UG 864	
UG 432	
UG 288	
UG 144	
UG 96	1025
UG 72	
2" HDPE = C100	925
HH (24"x36"x24")	
HH (30"x60"x30")	1
WARNING SIGN	1
ANCHOR/GUY	
AER SLACK LOOP	
SPLICE CLOSURE	
(1) FUSION SPLICE	
(12) RIBBON SPLICE	
FDH	
MST	
MST LENGTH	

MCI metro  
ACCESS TRANSMISSION SERVICES, LLC



OUTSIDE PLANT CONSTRUCTION  
TITLE: FIBER OPTIC CABLE ROUTE  
1804BZDZ.2\_MPLG

DATE: 2/22/2021

ENGINEER: KLJ

DRAWN BY: K. ZAVORAL

REVISIONS		
DATE:	DESCRIPTION	INITIAL

EXCEPT AS MAY BE OTHERWISE PROVIDED BY CONTRACT, THESE DRAWINGS AND SPECIFICATIONS SHALL REMAIN THE PROPERTY OF MCI COMMUNICATIONS SERVICES, INC., BOTH BEING ISSUED IN STRICT CONFIDENCE AND SHALL NOT BE REPRODUCED, COPIED, OR USED FOR ANY PURPOSE WITHOUT SPECIFIC WRITTEN PERMISSION.

SCALE

HORIZONTAL: 1" = 50'

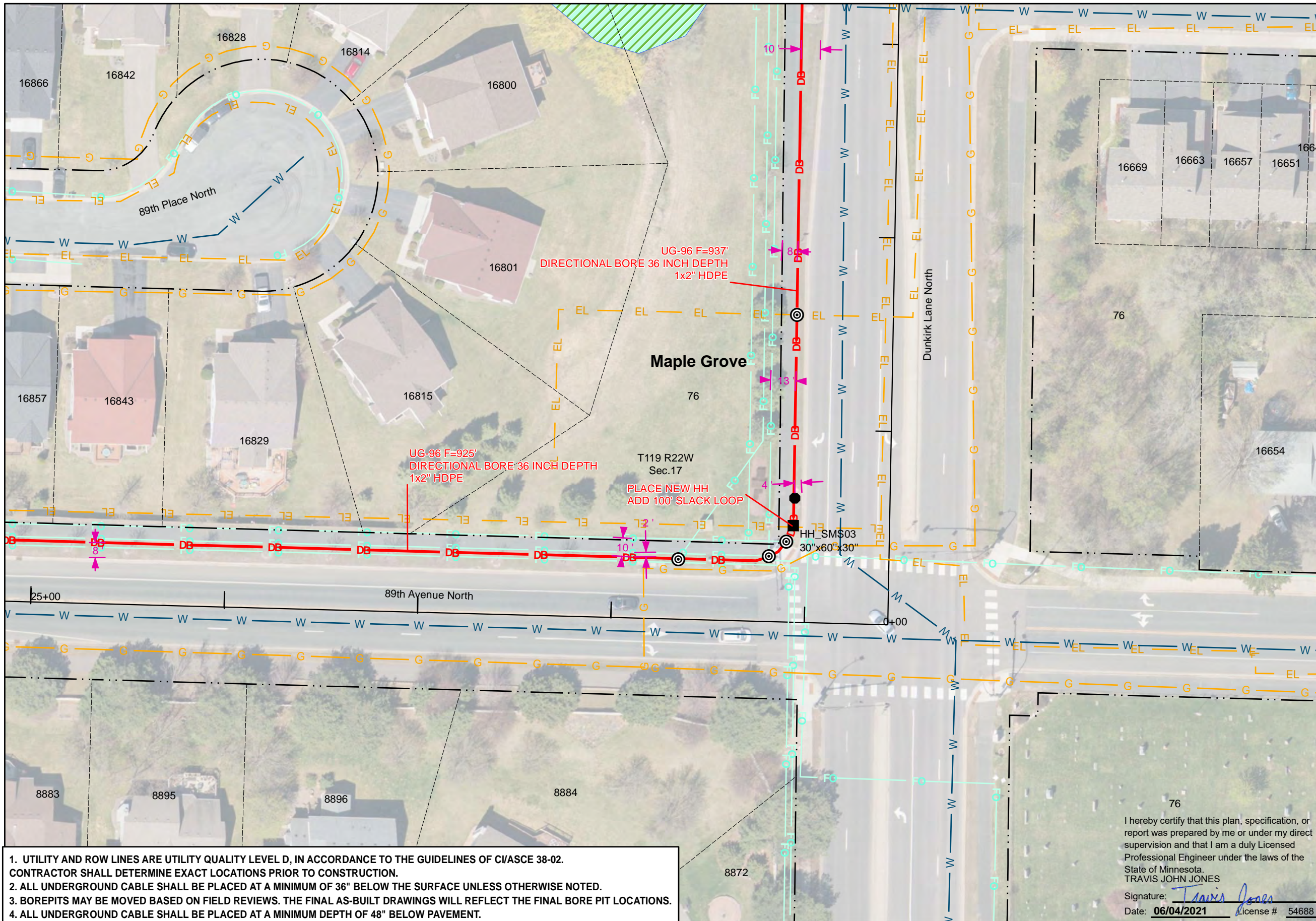
VERTICAL: 1" = 50'

MP \_\_\_\_\_ TO MP \_\_\_\_\_

SHEET 5 OF 10

FILE: MINNEAPOLIS\_NetworkExtension

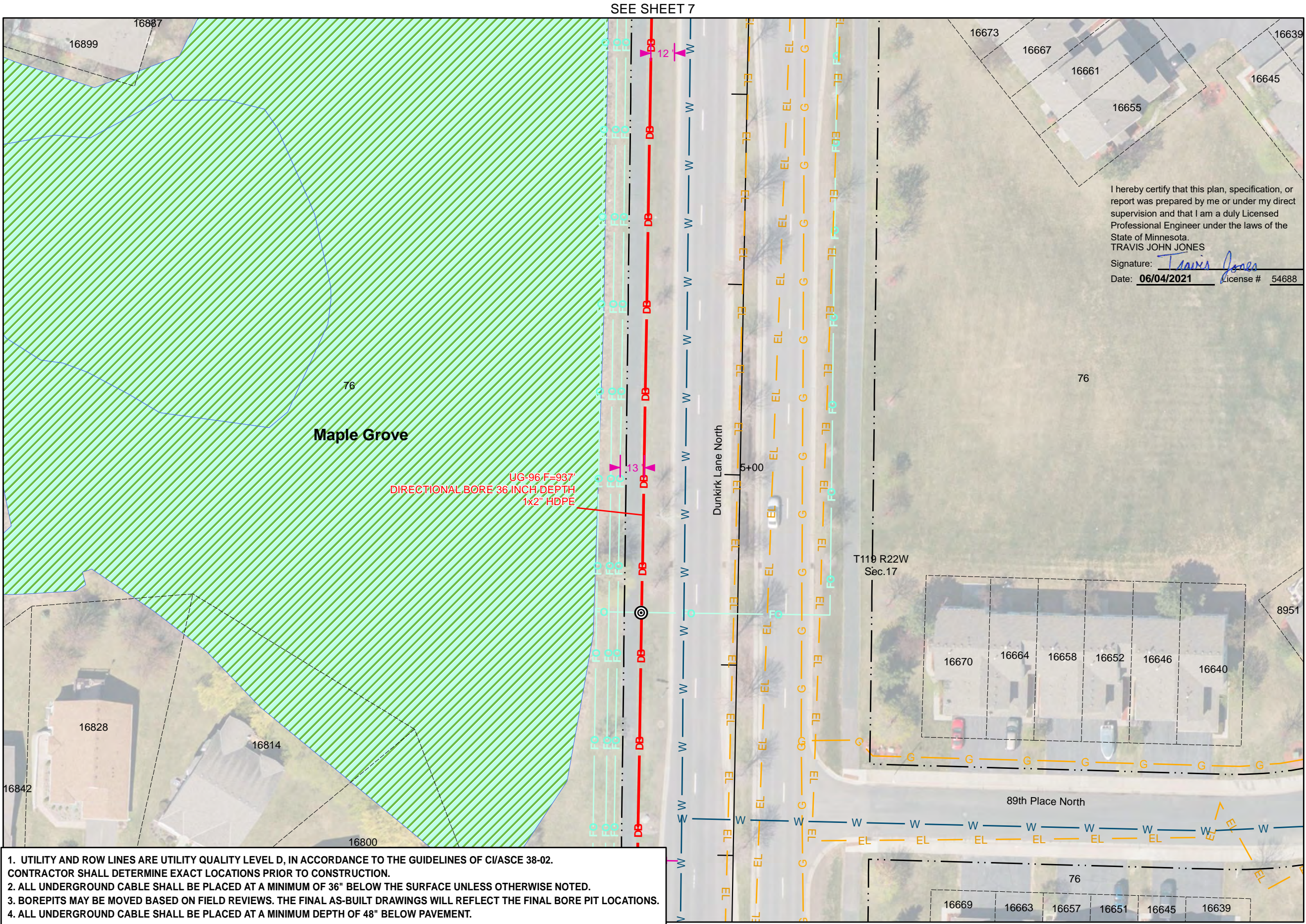
SEE SHEET 4



1. UTILITY AND ROW LINES ARE UTILITY QUALITY LEVEL D, IN ACCORDANCE TO THE GUIDELINES OF C/ASCE 38-02. CONTRACTOR SHALL DETERMINE EXACT LOCATIONS PRIOR TO CONSTRUCTION.
2. ALL UNDERGROUND CABLE SHALL BE PLACED AT A MINIMUM OF 36" BELOW THE SURFACE UNLESS OTHERWISE NOTED.
3. BOREPITS MAY BE MOVED BASED ON FIELD REVIEWS. THE FINAL AS-BUILT DRAWINGS WILL REFLECT THE FINAL BORE PIT LOCATIONS.
4. ALL UNDERGROUND CABLE SHALL BE PLACED AT A MINIMUM DEPTH OF 48" BELOW PAVEMENT.

I hereby certify that this plan, specification, or report was prepared by me or under my direct supervision and that I am a duly Licensed Professional Engineer under the laws of the State of Minnesota.  
 TRAVIS JOHN JONES  
 Signature: *Travis Jones*  
 Date: 06/04/2021 License # 54688





1. UTILITY AND ROW LINES ARE UTILITY QUALITY LEVEL D, IN ACCORDANCE TO THE GUIDELINES OF CI/ASCE 38-02. CONTRACTOR SHALL DETERMINE EXACT LOCATIONS PRIOR TO CONSTRUCTION.
2. ALL UNDERGROUND CABLE SHALL BE PLACED AT A MINIMUM OF 36" BELOW THE SURFACE UNLESS OTHERWISE NOTED.
3. BOREPITS MAY BE MOVED BASED ON FIELD REVIEWS. THE FINAL AS-BUILT DRAWINGS WILL REFLECT THE FINAL BORE PIT LOCATIONS.
4. ALL UNDERGROUND CABLE SHALL BE PLACED AT A MINIMUM DEPTH OF 48" BELOW PAVEMENT.

SEE SHEET 7

SEE SHEET 5

I hereby certify that this plan, specification, or report was prepared by me or under my direct supervision and that I am a duly Licensed Professional Engineer under the laws of the State of Minnesota.  
 TRAVIS JOHN JONES  
 Signature: *Travis Jones*  
 Date: 06/04/2021 License # 54688



PROJECT: 1804BZDZ.2\_MPLG

MAPLE GROVE, MN

CLARIFICATION NO.	QUANTITY
C100	
C110	
C120	
C200	
1x4" HDPE	
UG 48	
OVERPULL	
AER 864	
AER 432	
UG 864	
UG 432	
UG 288	
UG 144	
UG 96	
UG 72	
2" HDPE = C100	
HH (24"x36"x24")	
HH (30"x60"x30")	
WARNING SIGN	
ANCHOR/GUY	
AER SLACK LOOP	
SPLICE CLOSURE	
(1) FUSION SPLICE	
(12) RIBBON SPLICE	
FDH	
MST	
MST LENGTH	

MCI metro  
ACCESS TRANSMISSION SERVICES, LLC



OUTSIDE PLANT CONSTRUCTION

TITLE: FIBER OPTIC CABLE ROUTE

1804BZDZ.2\_MPLG

DATE: 2/22/2021

ENGINEER: KLJ

DRAWN BY: K. ZAVORAL

REVISIONS		
DATE:	DESCRIPTION	INITIAL

EXCEPT AS MAY BE OTHERWISE PROVIDED BY CONTRACT, THESE DRAWINGS AND SPECIFICATIONS SHALL REMAIN THE PROPERTY OF MCI COMMUNICATIONS SERVICES, INC., BOTH BEING ISSUED IN STRICT CONFIDENCE AND SHALL NOT BE REPRODUCED, COPIED, OR USED FOR ANY PURPOSE WITHOUT SPECIFIC WRITTEN PERMISSION.

SCALE		
HORIZONTAL: 1" = 50'		
VERTICAL: 1" = 50'		
MP	TO MP	
SHEET	6 OF	10
FILE: MINNEAPOLIS_NetworkExtension		



SEE SHEET 8

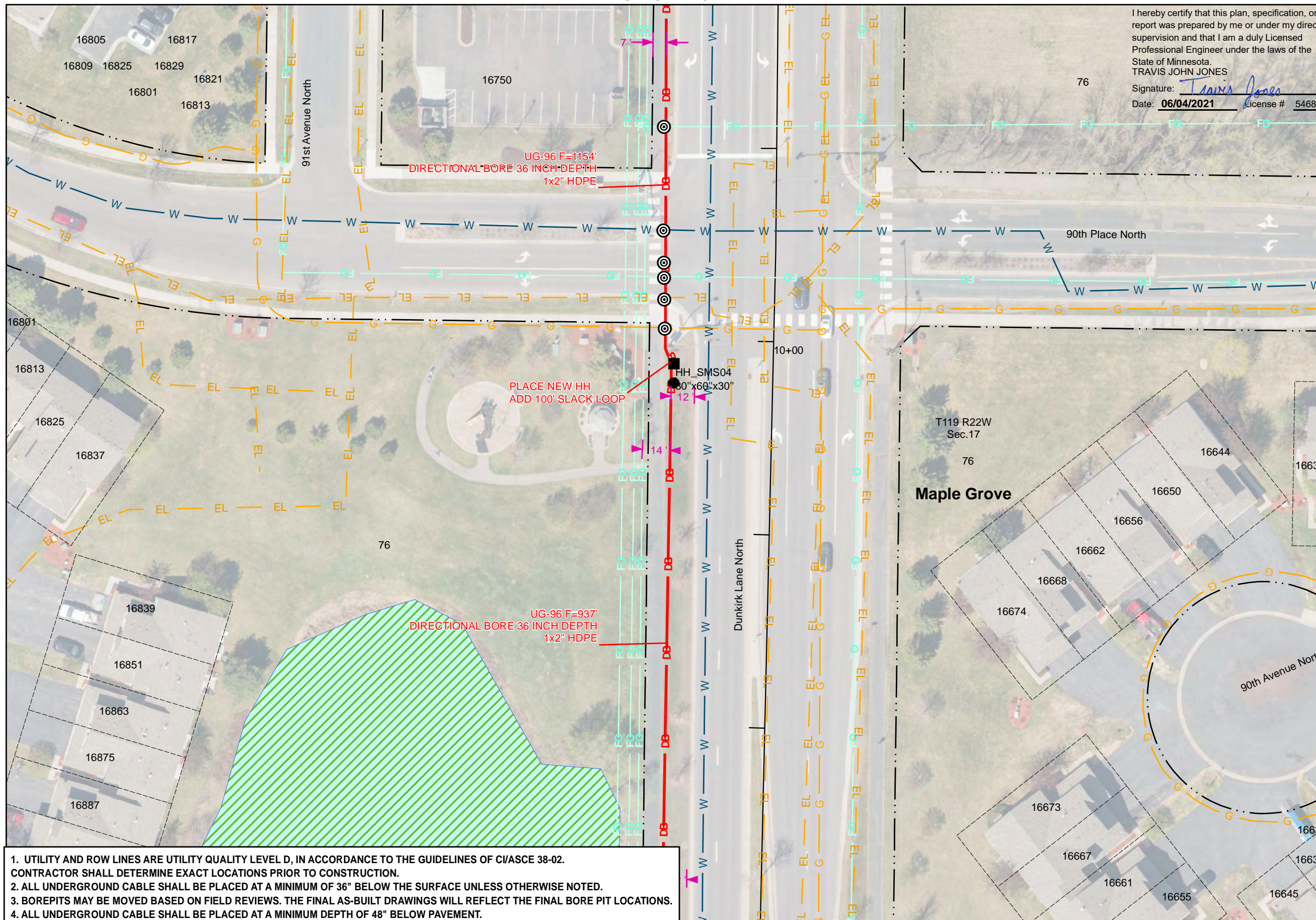


PROJECT: 1804BZDZ.2\_MPLG

MAPLE GROVE, MN

CLARIFICATION NO.	QUANTITY
C100	937
C110	
C120	
C200	
1x4" HDPE	
UG 48	
OVERPULL	
AER 864	
AER 432	
UG 864	
UG 432	
UG 288	
UG 144	
UG 96	1037
UG 72	
2" HDPE = C100	937
HH (24"x36"x24")	
HH (30"x60"x30")	1
WARNING SIGN	1
ANCHOR/GUY	
AER SLACK LOOP	
SPLICE CLOSURE	
(1) FUSION SPLICE	
(12) RIBBON SPLICE	
FDH	
MST	
MST LENGTH	

I hereby certify that this plan, specification, or report was prepared by me or under my direct supervision and that I am a duly Licensed Professional Engineer under the laws of the State of Minnesota.  
 TRAVIS JOHN JONES  
 Signature: *Travis Jones*  
 Date: 06/04/2021 License # 54688



SEE SHEET 6

- UTILITY AND ROW LINES ARE UTILITY QUALITY LEVEL D, IN ACCORDANCE TO THE GUIDELINES OF C/ASCE 38-02. CONTRACTOR SHALL DETERMINE EXACT LOCATIONS PRIOR TO CONSTRUCTION.
- ALL UNDERGROUND CABLE SHALL BE PLACED AT A MINIMUM OF 36" BELOW THE SURFACE UNLESS OTHERWISE NOTED.
- BOREPITS MAY BE MOVED BASED ON FIELD REVIEWS. THE FINAL AS-BUILT DRAWINGS WILL REFLECT THE FINAL BORE PIT LOCATIONS.
- ALL UNDERGROUND CABLE SHALL BE PLACED AT A MINIMUM DEPTH OF 48" BELOW PAVEMENT.

MCImetro  
ACCESS TRANSMISSION SERVICES, LLC



OUTSIDE PLANT CONSTRUCTION  
TITLE: FIBER OPTIC CABLE ROUTE  
1804BZDZ.2\_MPLG

DATE: 2/22/2021

ENGINEER: KLJ

DRAWN BY: K. ZAVORAL

REVISIONS		
DATE:	DESCRIPTION	INITIAL

EXCEPT AS MAY BE OTHERWISE PROVIDED BY CONTRACT, THESE DRAWINGS AND SPECIFICATIONS SHALL REMAIN THE PROPERTY OF MCI COMMUNICATIONS SERVICES, INC., BOTH BEING ISSUED IN STRICT CONFIDENCE AND SHALL NOT BE REPRODUCED, COPIED, OR USED FOR ANY PURPOSE WITHOUT SPECIFIC WRITTEN PERMISSION.

SCALE  
 HORIZONTAL: 1" = 50'  
 VERTICAL: 1" = 50'  
 MP \_\_\_\_\_ TO MP \_\_\_\_\_  
 SHEET 7 OF 10  
 FILE: MINNEAPOLIS\_NetworkExtension



SEE SHEET 9

N



PROJECT: 1804BZDZ.2\_MPLG

MAPLE GROVE, MN

CLARIFICATION NO. QUANTITY

C100	
C110	
C120	
C200	
1x4" HDPE	
UG 48	
OVERPULL	
AER 864	
AER 432	
UG 864	
UG 432	
UG 288	
UG 144	
UG 96	
UG 72	
2" HDPE = C100	
HH (24"x36"x24")	
HH (30"x60"x30")	
WARNING SIGN	
ANCHOR/GUY	
AER SLACK LOOP	
SPLICE CLOSURE	
(1) FUSION SPLICE	
(12) RIBBON SPLICE	
FDH	
MST	
MST LENGTH	

MCImetro  
ACCESS TRANSMISSION SERVICES, LLC



OUTSIDE PLANT CONSTRUCTION  
TITLE: FIBER OPTIC CABLE ROUTE  
1804BZDZ.2\_MPLG

DATE: 2/22/2021

ENGINEER: KLJ

DRAWN BY: K. ZAVORAL

REVISIONS		
DATE	DESCRIPTION	INITIAL

EXCEPT AS MAY BE OTHERWISE PROVIDED BY CONTRACT, THESE DRAWINGS AND SPECIFICATIONS SHALL REMAIN THE PROPERTY OF MCI COMMUNICATIONS SERVICES, INC., BOTH BEING ISSUED IN STRICT CONFIDENCE AND SHALL NOT BE REPRODUCED, COPIED, OR USED FOR ANY PURPOSE WITHOUT SPECIFIC WRITTEN PERMISSION.

SCALE

HORIZONTAL: 1" = 50'

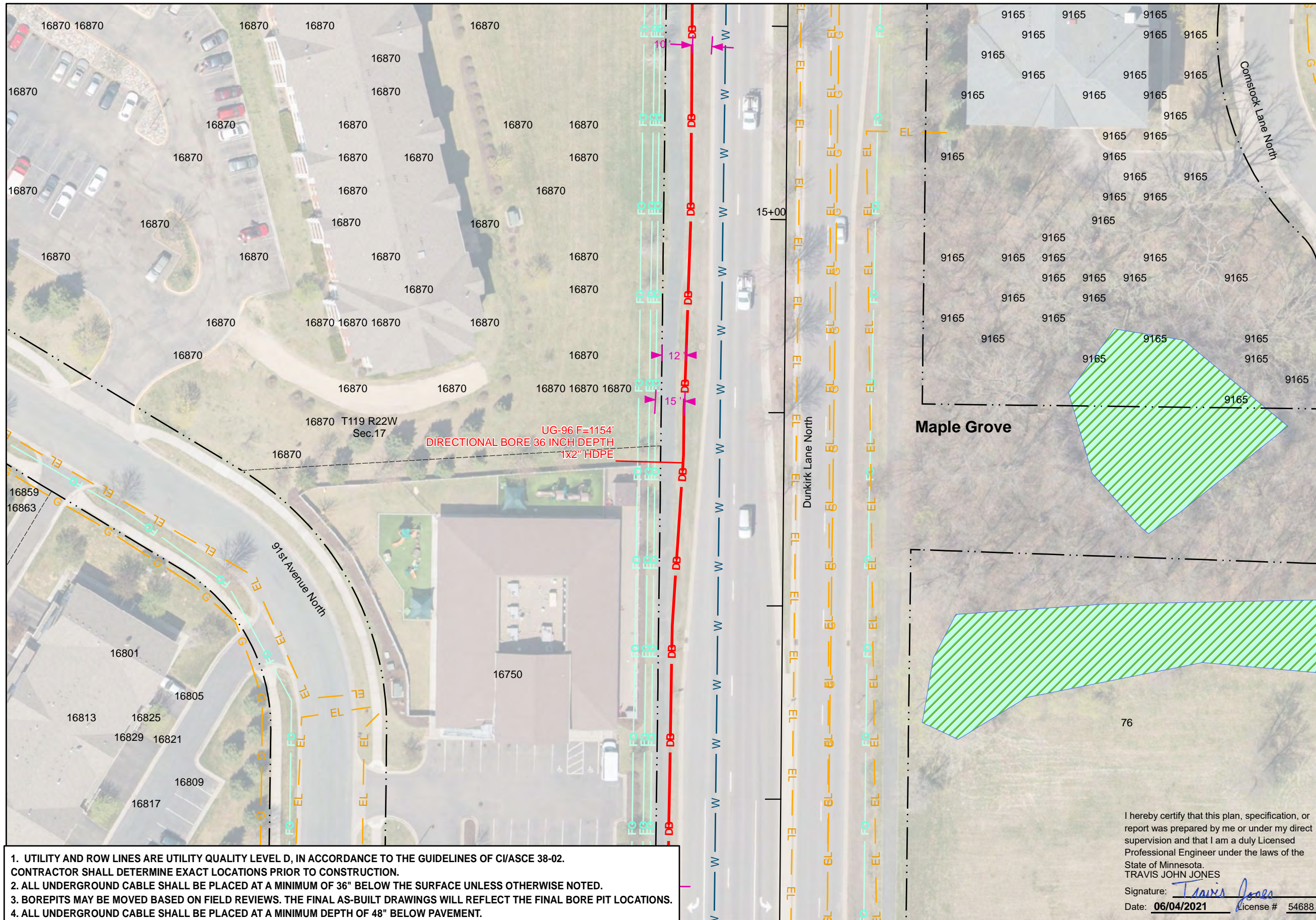
VERTICAL: 1" = 50'

MP \_\_\_\_\_ TO MP \_\_\_\_\_

SHEET 8 OF 10

FILE: MINNEAPOLIS\_NetworkExtension

SEE SHEET 7

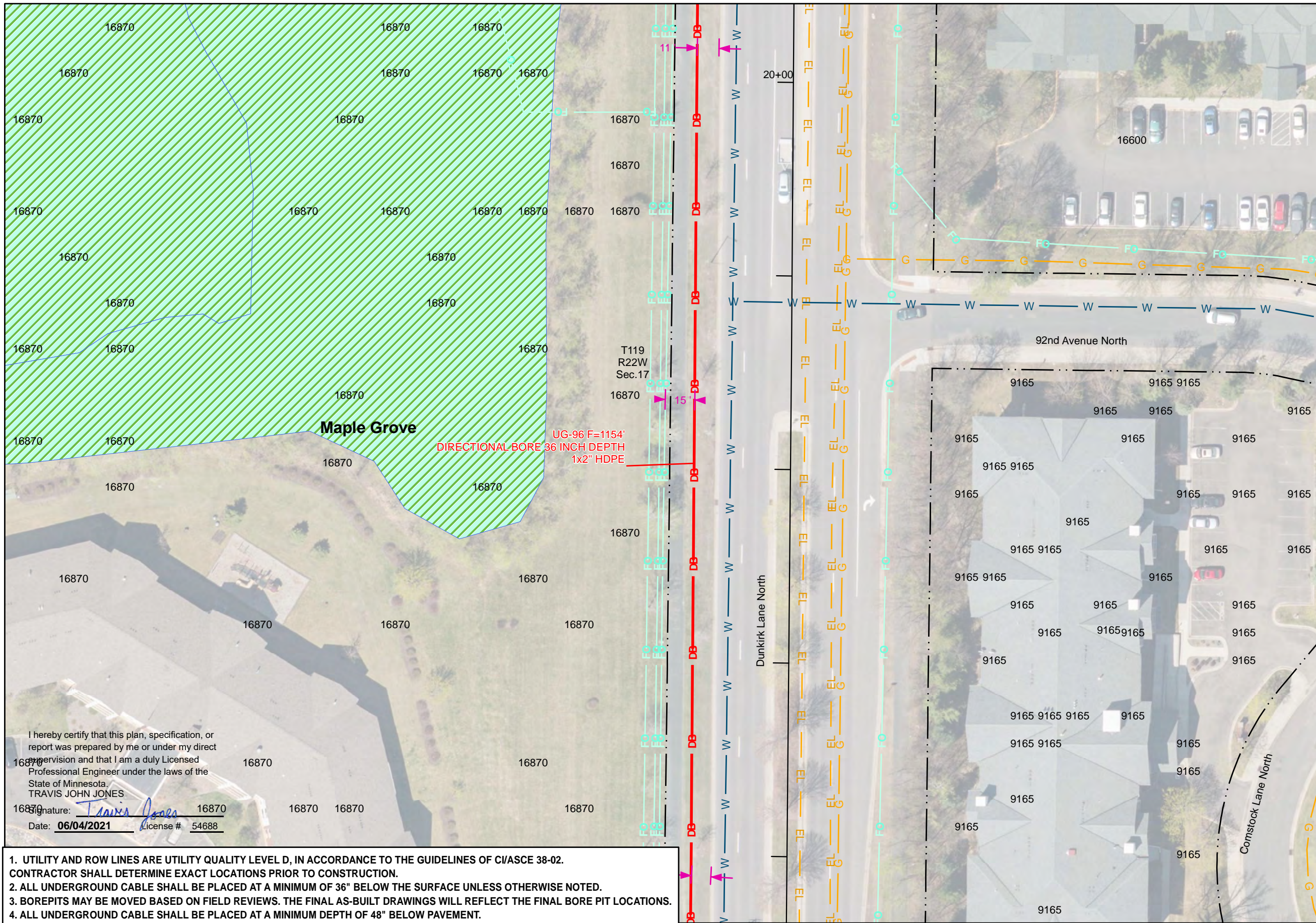


- UTILITY AND ROW LINES ARE UTILITY QUALITY LEVEL D, IN ACCORDANCE TO THE GUIDELINES OF C/ASCE 38-02. CONTRACTOR SHALL DETERMINE EXACT LOCATIONS PRIOR TO CONSTRUCTION.
- ALL UNDERGROUND CABLE SHALL BE PLACED AT A MINIMUM OF 36" BELOW THE SURFACE UNLESS OTHERWISE NOTED.
- BOREPITS MAY BE MOVED BASED ON FIELD REVIEWS. THE FINAL AS-BUILT DRAWINGS WILL REFLECT THE FINAL BORE PIT LOCATIONS.
- ALL UNDERGROUND CABLE SHALL BE PLACED AT A MINIMUM DEPTH OF 48" BELOW PAVEMENT.

I hereby certify that this plan, specification, or report was prepared by me or under my direct supervision and that I am a duly Licensed Professional Engineer under the laws of the State of Minnesota.  
 TRAVIS JOHN JONES  
 Signature: *Travis Jones*  
 Date: 06/04/2021 License # 54688



SEE SHEET 10



SEE SHEET 8



PROJECT: 1804BZDZ.2\_MPLG

MAPLE GROVE, MN

CLARIFICATION NO.	QUANTITY
C100	
C110	
C120	
C200	
1x4" HDPE	
UG 48	
OVERPULL	
AER 864	
AER 432	
UG 864	
UG 432	
UG 288	
UG 144	
UG 96	
UG 72	
2" HDPE = C100	
HH (24"x36"x24")	
HH (30"x60"x30")	
WARNING SIGN	
ANCHOR/GUY	
AER SLACK LOOP	
SPLICE CLOSURE	
(1) FUSION SPLICE	
(12) RIBBON SPLICE	
FDH	
MST	
MST LENGTH	

MCI metro  
ACCESS TRANSMISSION SERVICES, LLC

**MCI**

OUTSIDE PLANT CONSTRUCTION  
TITLE: FIBER OPTIC CABLE ROUTE  
1804BZDZ.2\_MPLG

DATE: 2/22/2021

ENGINEER: KLJ

DRAWN BY: K. ZAVORAL

REVISIONS		
DATE	DESCRIPTION	INITIAL

EXCEPT AS MAY BE OTHERWISE PROVIDED BY CONTRACT, THESE DRAWINGS AND SPECIFICATIONS SHALL REMAIN THE PROPERTY OF MCI COMMUNICATIONS SERVICES, INC., BOTH BEING ISSUED IN STRICT CONFIDENCE AND SHALL NOT BE REPRODUCED, COPIED, OR USED FOR ANY PURPOSE WITHOUT SPECIFIC WRITTEN PERMISSION.

SCALE

HORIZONTAL: 1" = 50'

VERTICAL: 1" = 50'

MP \_\_\_\_\_ TO MP \_\_\_\_\_

SHEET 9 OF 10

FILE: MINNEAPOLIS\_NetworkExtension

I hereby certify that this plan, specification, or report was prepared by me or under my direct supervision and that I am a duly Licensed Professional Engineer under the laws of the State of Minnesota.  
TRAVIS JOHN JONES  
Signature: *Travis Jones*  
Date: 06/04/2021 License # 54688

- UTILITY AND ROW LINES ARE UTILITY QUALITY LEVEL D, IN ACCORDANCE TO THE GUIDELINES OF C/ASCE 38-02. CONTRACTOR SHALL DETERMINE EXACT LOCATIONS PRIOR TO CONSTRUCTION.
- ALL UNDERGROUND CABLE SHALL BE PLACED AT A MINIMUM OF 36" BELOW THE SURFACE UNLESS OTHERWISE NOTED.
- BOREPITS MAY BE MOVED BASED ON FIELD REVIEWS. THE FINAL AS-BUILT DRAWINGS WILL REFLECT THE FINAL BORE PIT LOCATIONS.
- ALL UNDERGROUND CABLE SHALL BE PLACED AT A MINIMUM DEPTH OF 48" BELOW PAVEMENT.





PROJECT: 1804BZDZ.2\_MPLG

MAPLE GROVE, MN

CLARIFICATION NO.	QUANTITY
C100	1154
C110	
C120	
C200	
1x4" HDPE	
UG 48	
OVERPULL	
AER 864	
AER 432	
UG 864	
UG 432	
UG 288	
UG 144	
UG 96	1254
UG 72	
2" HDPE = C100	1154
HH (24"x36"x24")	
HH (30"x60"x30")	1
WARNING SIGN	1
ANCHOR/GUY	
AER SLACK LOOP	
SPLICE CLOSURE	
(1) FUSION SPLICE	
(12) RIBBON SPLICE	
FDH	
MST	
MST LENGTH	

MCImetro  
ACCESS TRANSMISSION SERVICES, LLC



OUTSIDE PLANT CONSTRUCTION  
TITLE: FIBER OPTIC CABLE ROUTE  
1804BZDZ.2\_MPLG

DATE: 2/22/2021

ENGINEER: KLJ

DRAWN BY: K. ZAVORAL

REVISIONS		
DATE	DESCRIPTION	INITIAL

EXCEPT AS MAY BE OTHERWISE PROVIDED BY CONTRACT, THESE DRAWINGS AND SPECIFICATIONS SHALL REMAIN THE PROPERTY OF MCI COMMUNICATIONS SERVICES, INC., BOTH BEING ISSUED IN STRICT CONFIDENCE AND SHALL NOT BE REPRODUCED, COPIED, OR USED FOR ANY PURPOSE WITHOUT SPECIFIC WRITTEN PERMISSION.

SCALE

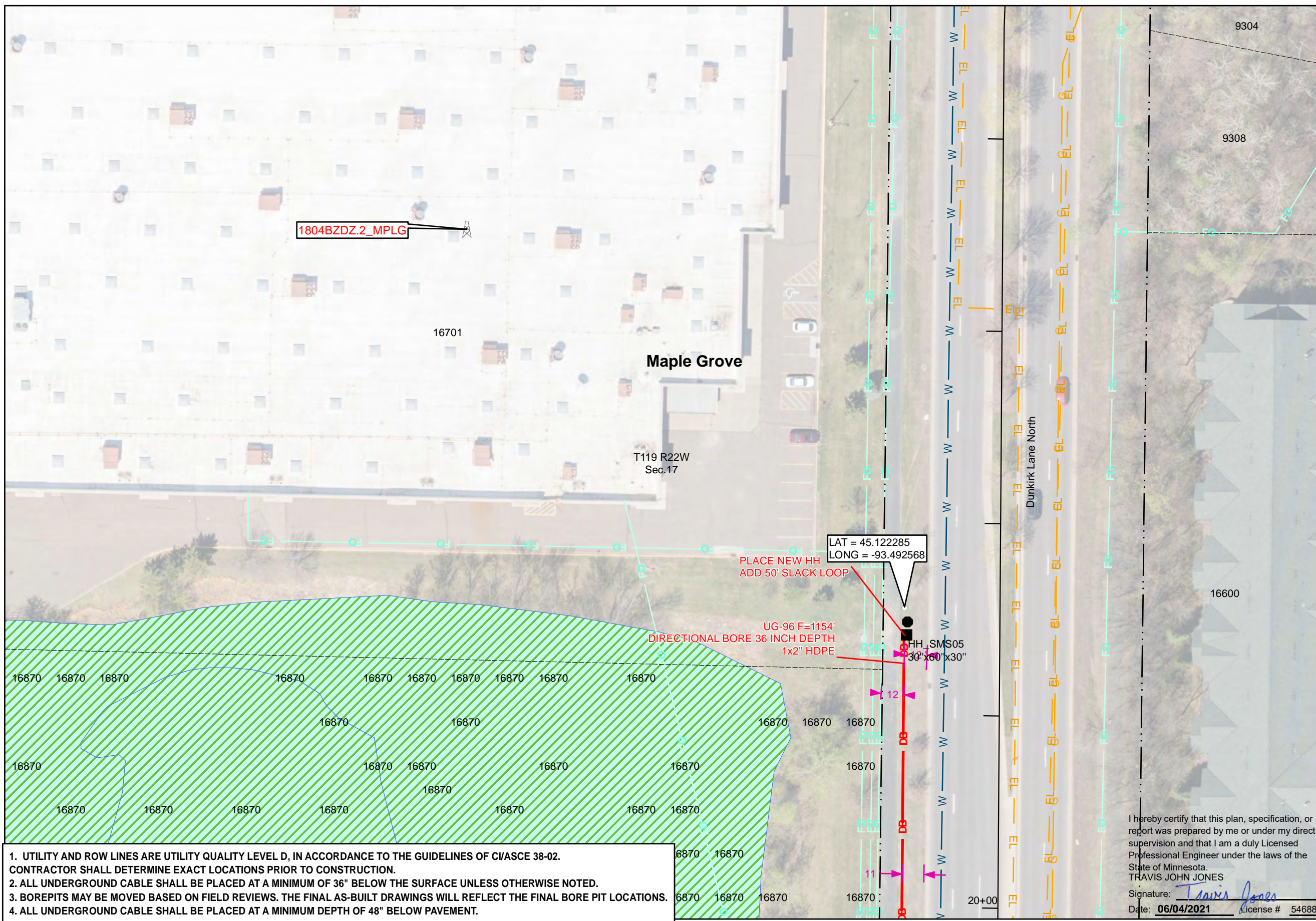
HORIZONTAL: 1" = 50'

VERTICAL: 1" = 50'

MP \_\_\_\_\_ TO MP \_\_\_\_\_

SHEET 10 OF 10

FILE: MINNEAPOLIS\_NetworkExtension



1. UTILITY AND ROW LINES ARE UTILITY QUALITY LEVEL D, IN ACCORDANCE TO THE GUIDELINES OF CI/ASCE 38-02. CONTRACTOR SHALL DETERMINE EXACT LOCATIONS PRIOR TO CONSTRUCTION.
2. ALL UNDERGROUND CABLE SHALL BE PLACED AT A MINIMUM OF 36" BELOW THE SURFACE UNLESS OTHERWISE NOTED.
3. BOREPITS MAY BE MOVED BASED ON FIELD REVIEWS. THE FINAL AS-BUILT DRAWINGS WILL REFLECT THE FINAL BORE PIT LOCATIONS.
4. ALL UNDERGROUND CABLE SHALL BE PLACED AT A MINIMUM DEPTH OF 48" BELOW PAVEMENT.

I hereby certify that this plan, specification, or report was prepared by me or under my direct supervision and that I am a duly Licensed Professional Engineer under the laws of the State of Minnesota.  
 TRAVIS JOHN JONES  
 Signature: *Travis Jones*  
 Date: 06/04/2021 License # 54688

SEE SHEET 9



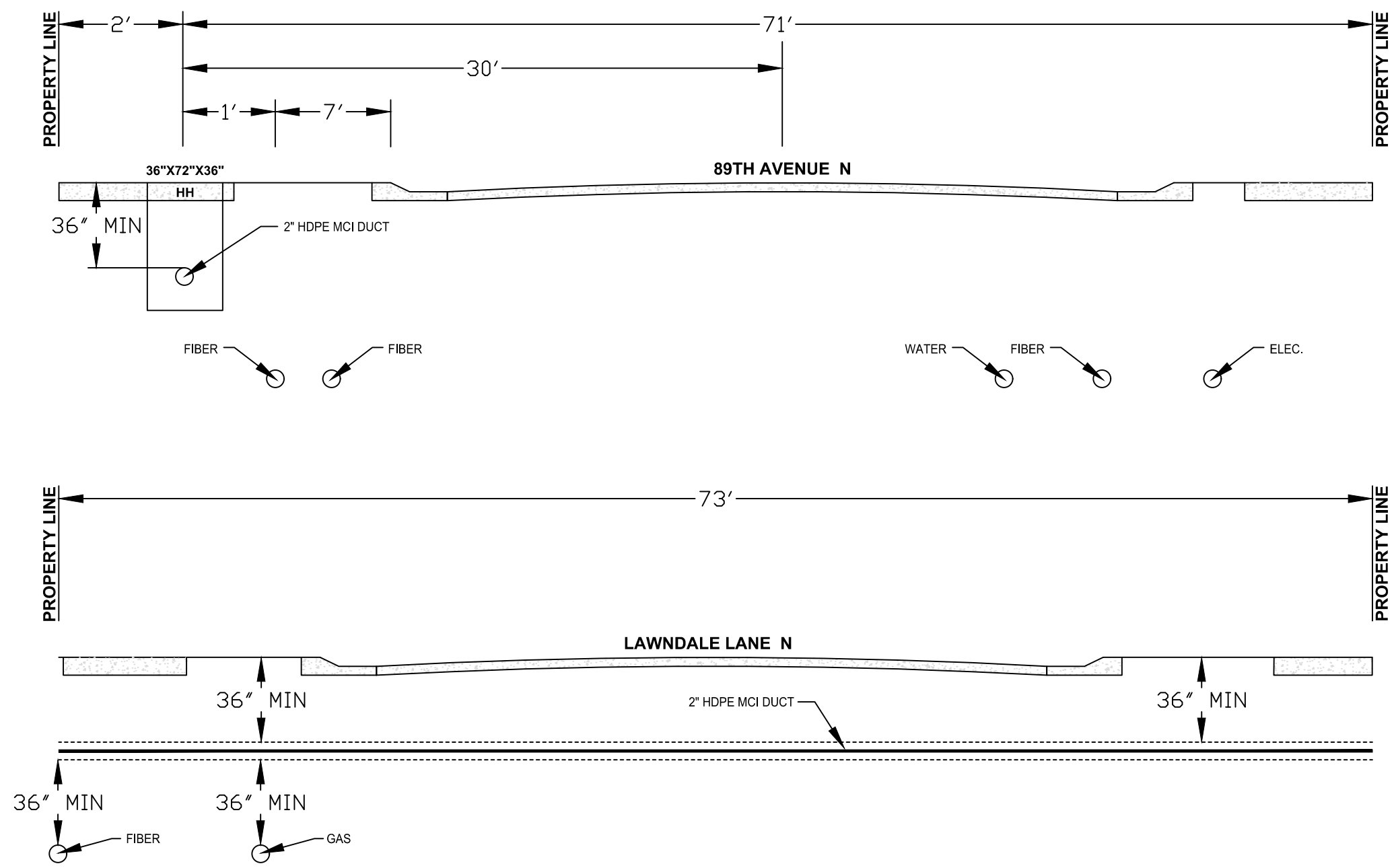
NOTE: DEPTHS OF UTILITES UNKNOWN,  
WILL BE LOCATED AT TIRS  
OF CONSTRUCTION.



PROJECT: SAMS MAPLE GROVE

ST. PAUL, MN

CLARIFICATION NO.	QUANTITY
C100	
C101	
C102	
C104 (24x36)	
C105 (30x60)	
C106	
C107	
C108	
C110	
C111	
C112	
C114	
C115	
C200	
C300	
C301	
C302	
C303	
C304	
C103	



MCI<sup>stro</sup>  
ACCESS TRANSMISSION SERVICES, LLC  
OUTSIDE PLANT CONSTRUCTION  
TITLE: BORE PROFILE  
SAMS MAPLE GROVE

DATE: 03/22/21

ENGINEER: KLJ

DRAWN BY: RS

REVISIONS		
DATE:	DESCRIPTION	INITIAL

EXCEPT AS MAY BE OTHERWISE PROVIDED BY CONTRACT, THESE DRAWINGS AND SPECIFICATIONS SHALL REMAIN THE PROPERTY OF MCI COMMUNICATIONS SERVICES, INC. BOTH BEING ISSUED IN STRICT CONFIDENCE AND SHALL NOT BE REPRODUCED, COPIED OR USED FOR ANY PURPOSE WITHOUT SPECIFIC WRITTEN PERMISSION.

SCALE	
HORIZONTAL:	NTS
VERTICAL:	NTS
MP	TO MP
SHEET	1 OF 10
FILE:	BORE_PROFILE_783

I hereby certify that this plan, specification, or report was prepared by me or under my direct supervision and that I am a duly Licensed Professional Engineer under the laws of the State of Minnesota.  
TRAVIS JOHN JONES  
Signature: *Travis Jones*  
Date: 06/04/2021 License # 54688





PROJECT: SAMS MAPLE GROVE

ST. PAUL, MN

CLARIFICATION NO. QUANTITY

C100	
C101	
C102	
C104 (24x36)	
C105 (30x60)	
C106	
C107	
C108	
C110	
C111	
C112	
C114	
C115	
C200	
C300	
C301	
C302	
C303	
C304	
C103	

MCIStro  
ACCESS TRANSMISSION SERVICES, LLC



OUTSIDE PLANT CONSTRUCTION

TITLE: BORE PROFILE

SAMS MAPLE GROVE

DATE: 03/22/21

ENGINEER: KLJ

DRAWN BY: RS

REVISIONS

DATE	DESCRIPTION	INITIAL

EXCEPT AS MAY BE OTHERWISE PROVIDED BY CONTRACT, THESE DRAWINGS AND SPECIFICATIONS SHALL REMAIN THE PROPERTY OF MCI COMMUNICATIONS SERVICES, INC. BOTH BEING ISSUED IN STRICT CONFIDENCE AND SHALL NOT BE REPRODUCED, COPIED OR USED FOR ANY PURPOSE WITHOUT SPECIFIC WRITTEN PERMISSION.

SCALE

HORIZONTAL: NTS

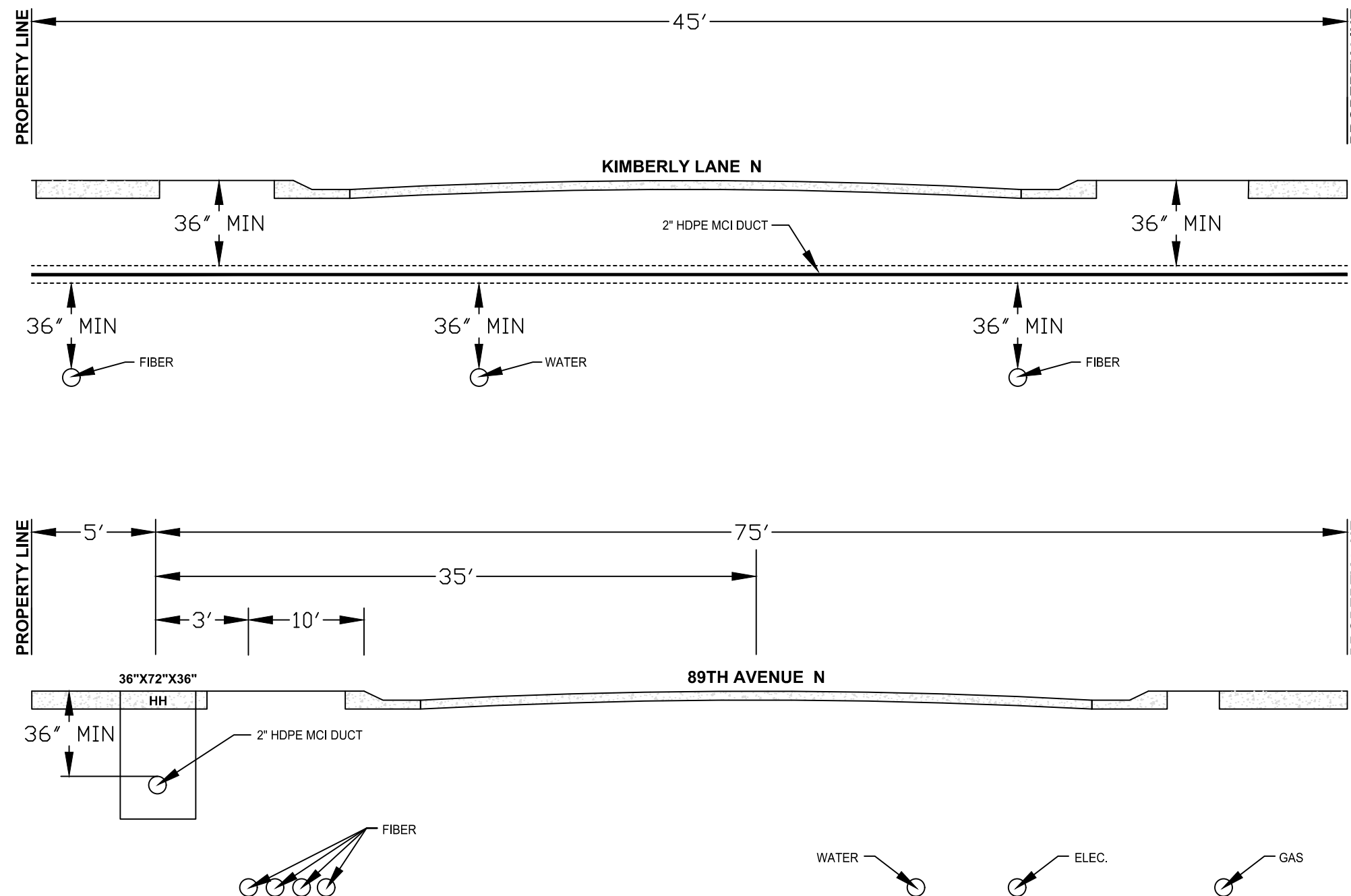
VERTICAL: NTS

MP TO MP

SHEET 2 OF 10

FILE: BORE\_PROFILE\_783

NOTE: DEPTHS OF UTILITES UNKNOWN, WILL BE LOCATED AT TIRS OF CONSTRUCTION.



I hereby certify that this plan, specification, or report was prepared by me or under my direct supervision and that I am a duly Licensed Professional Engineer under the laws of the State of Minnesota.  
 TRAVIS JOHN JONES  
 Signature: *Travis Jones*  
 Date: 06/04/2021 License # 54688





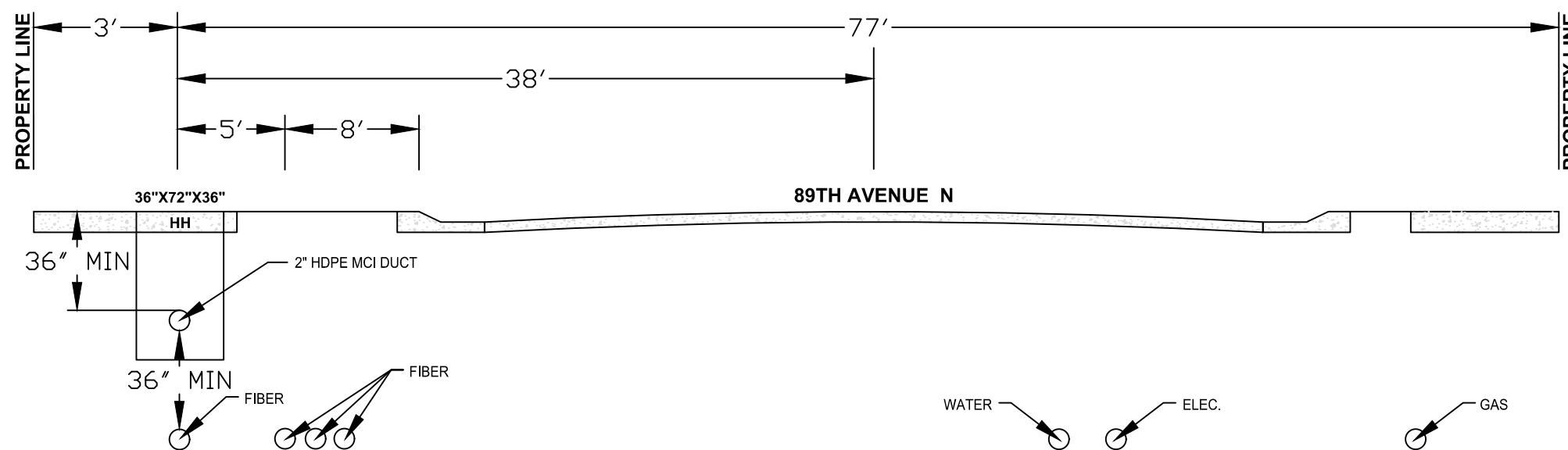
NOTE: DEPTHS OF UTILITES UNKNOWN,  
WILL BE LOCATED AT TIRS  
OF CONSTRUCTION.

PROJECT: SAMS MAPLE GROVE

ST. PAUL, MN

CLARIFICATION NO. QUANTITY

C100	
C101	
C102	
C104 (24x36)	
C105 (30x60)	
C106	
C107	
C108	
C110	
C111	
C112	
C114	
C115	
C200	
C300	
C301	
C302	
C303	
C304	
C103	



MCI  
ACCESS TRANSMISSION SERVICES, LLC



OUTSIDE PLANT CONSTRUCTION

TITLE: BORE PROFILE

SAMS MAPLE GROVE

DATE: 03/22/21

ENGINEER: KLJ

DRAWN BY: RS

REVISIONS

DATE:	DESCRIPTION	INITIAL

EXCEPT AS MAY BE OTHERWISE PROVIDED BY CONTRACT, THESE DRAWINGS AND SPECIFICATIONS SHALL REMAIN THE PROPERTY OF MCI COMMUNICATIONS SERVICES, INC. BOTH BEING ISSUED IN STRICT CONFIDENCE AND SHALL NOT BE REPRODUCED, COPIED OR USED FOR ANY PURPOSE WITHOUT SPECIFIC WRITTEN PERMISSION.

SCALE

HORIZONTAL: NTS

VERTICAL: NTS

MP TO MP

SHEET 3 OF 10

FILE: BORE\_PROFILE\_783

I hereby certify that this plan, specification, or report was prepared by me or under my direct supervision and that I am a duly Licensed Professional Engineer under the laws of the State of Minnesota.  
TRAVIS JOHN JONES  
Signature: *Travis Jones*  
Date: 06/04/2021 license # 54688





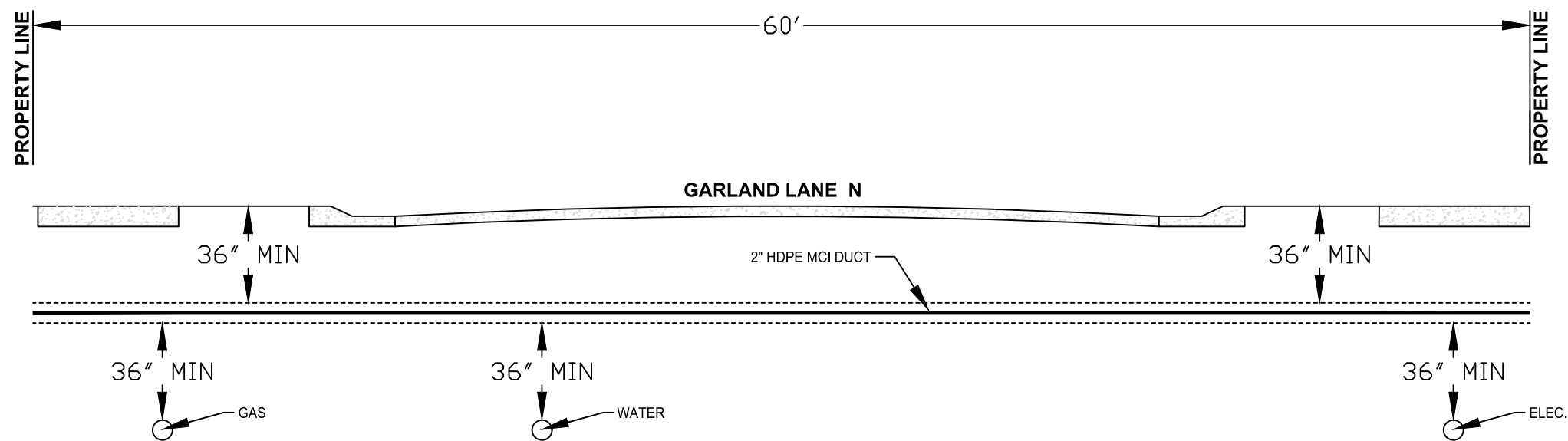
NOTE: DEPTHS OF UTILITES UNKNOWN,  
WILL BE LOCATED AT TIRS  
OF CONSTRUCTION.

PROJECT: SAMS MAPLE GROVE

ST. PAUL, MN

CLARIFICATION NO. QUANTITY

C100	
C101	
C102	
C104 (24x36)	
C105 (30x60)	
C106	
C107	
C108	
C110	
C111	
C112	
C114	
C115	
C200	
C300	
C301	
C302	
C303	
C304	
C103	



MCI<sup>iro</sup>  
ACCESS TRANSMISSION SERVICES, LLC



OUTSIDE PLANT CONSTRUCTION

TITLE: BORE PROFILE

SAMS MAPLE GROVE

DATE: 03/22/21

ENGINEER: KLJ

DRAWN BY: RS

REVISIONS

DATE:	DESCRIPTION	INITIAL

EXCEPT AS MAY BE OTHERWISE PROVIDED BY CONTRACT, THESE DRAWINGS AND SPECIFICATIONS SHALL REMAIN THE PROPERTY OF MCI COMMUNICATIONS SERVICES, INC. BOTH BEING ISSUED IN STRICT CONFIDENCE AND SHALL NOT BE REPRODUCED, COPIED OR USED FOR ANY PURPOSE WITHOUT SPECIFIC WRITTEN PERMISSION.

SCALE

HORIZONTAL: NTS

VERTICAL: NTS

MP TO MP

SHEET 4 OF 10

FILE: BORE\_PROFILE\_783

I hereby certify that this plan, specification, or report was prepared by me or under my direct supervision and that I am a duly Licensed Professional Engineer under the laws of the State of Minnesota.

TRAVIS JOHN JONES

Signature: *Travis Jones*

Date: 06/04/2021 license # 54688





PROJECT: SAMS MAPLE GROVE

ST. PAUL, MN

CLARIFICATION NO. QUANTITY

C100	
C101	
C102	
C104 (24x36)	
C105 (30x60)	
C106	
C107	
C108	
C110	
C111	
C112	
C114	
C115	
C200	
C300	
C301	
C302	
C303	
C304	
C103	

MCI<sup>stro</sup>  
ACCESS TRANSMISSION SERVICES, LLC



OUTSIDE PLANT CONSTRUCTION

TITLE: BORE PROFILE

SAMS MAPLE GROVE

DATE: 03/22/21

ENGINEER: KLJ

DRAWN BY: RS

REVISIONS

DATE:	DESCRIPTION	INITIAL

EXCEPT AS MAY BE OTHERWISE PROVIDED BY CONTRACT, THESE DRAWINGS AND SPECIFICATIONS SHALL REMAIN THE PROPERTY OF MCI COMMUNICATIONS SERVICES, INC. BOTH BEING ISSUED IN STRICT CONFIDENCE AND SHALL NOT BE REPRODUCED, COPIED OR USED FOR ANY PURPOSE WITHOUT SPECIFIC WRITTEN PERMISSION.

SCALE

HORIZONTAL: NTS

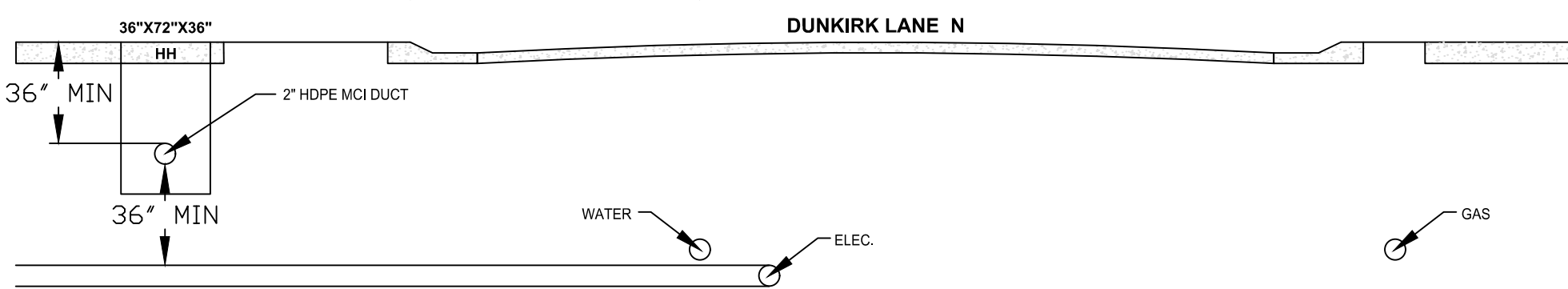
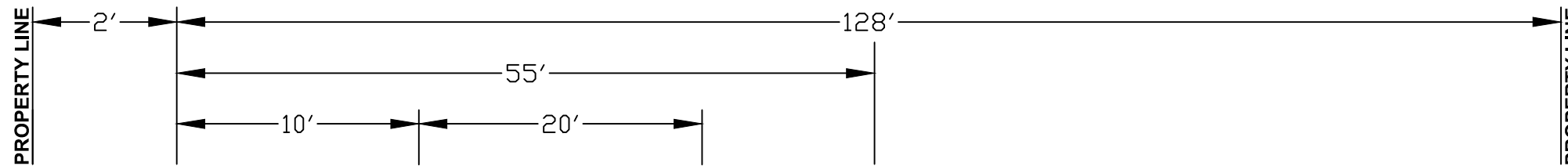
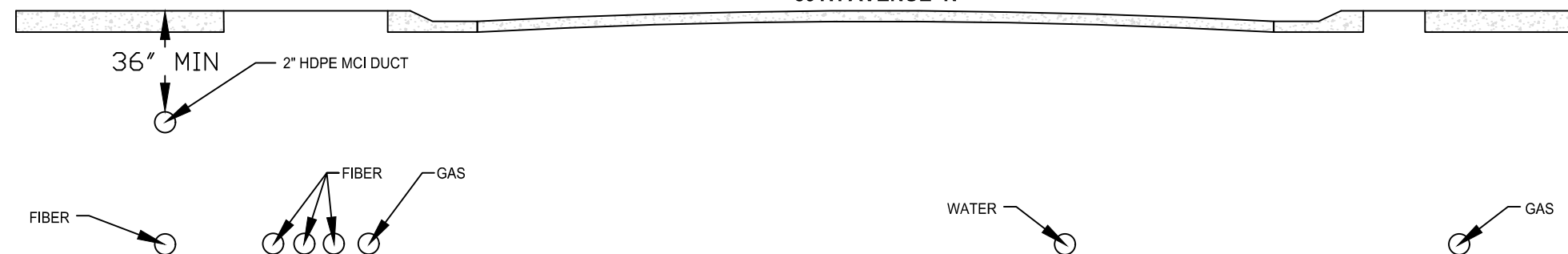
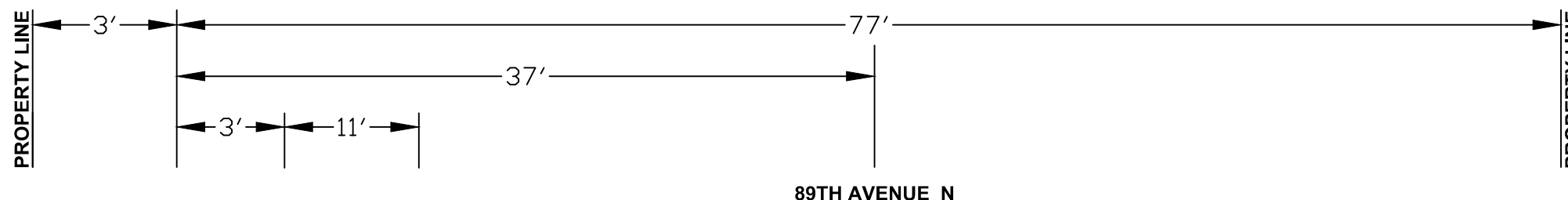
VERTICAL: NTS

MP TO MP

SHEET 5 OF 10

FILE: BORE\_PROFILE\_783

NOTE: DEPTHS OF UTILITES UNKNOWN, WILL BE LOCATED AT TIRS OF CONSTRUCTION.



I hereby certify that this plan, specification, or report was prepared by me or under my direct supervision and that I am a duly Licensed Professional Engineer under the laws of the State of Minnesota.  
 TRAVIS JOHN JONES  
 Signature: *Travis Jones*  
 Date: 06/04/2021 License # 54688









PROJECT: SAMS MAPLE GROVE

ST. PAUL, MN

CLARIFICATION NO.	QUANTITY
C100	
C101	
C102	
C104 (24x36)	
C105 (30x60)	
C106	
C107	
C108	
C110	
C111	
C112	
C114	
C115	
C200	
C300	
C301	
C302	
C303	
C304	
C103	

MCIStro  
ACCESS TRANSMISSION SERVICES, LLC



OUTSIDE PLANT CONSTRUCTION

TITLE: BORE PROFILE

SAMS MAPLE GROVE

DATE: 03/22/21

ENGINEER: KLJ

DRAWN BY: RS

REVISIONS		
DATE:	DESCRIPTION	INITIAL

EXCEPT AS MAY BE OTHERWISE PROVIDED BY CONTRACT, THESE DRAWINGS AND SPECIFICATIONS SHALL REMAIN THE PROPERTY OF MCI COMMUNICATIONS SERVICES, INC. BOTH BEING ISSUED IN STRICT CONFIDENCE AND SHALL NOT BE REPRODUCED, COPIED OR USED FOR ANY PURPOSE WITHOUT SPECIFIC WRITTEN PERMISSION.

SCALE

HORIZONTAL: NTS

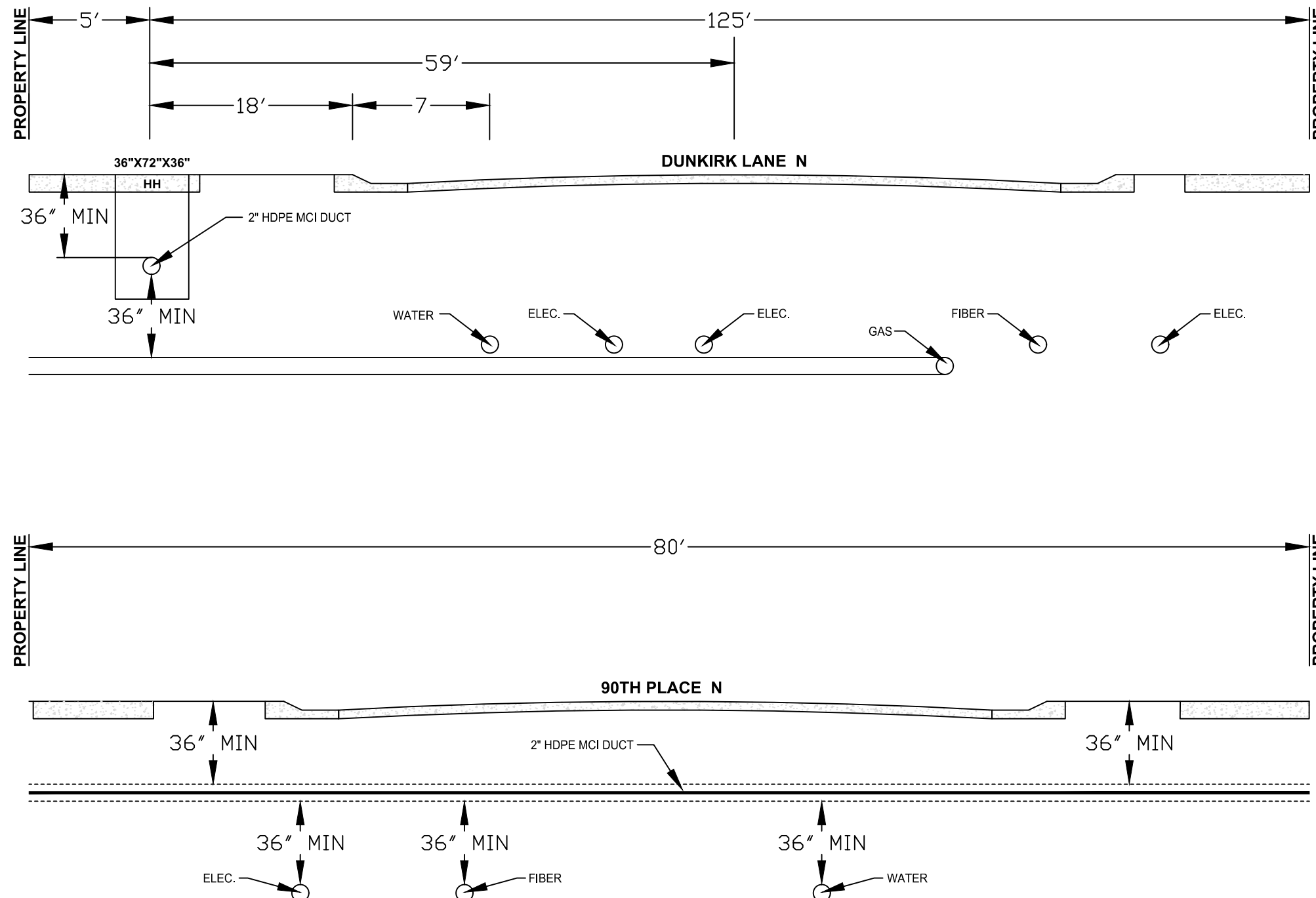
VERTICAL: NTS

MP TO MP

SHEET 7 OF 10

FILE: BORE\_PROFILE\_783

NOTE: DEPTHS OF UTILITES UKNOWN, WILL BE LOCATED AT TIRS OF CONSTRUCTION.



I hereby certify that this plan, specification, or report was prepared by me or under my direct supervision and that I am a duly Licensed Professional Engineer under the laws of the State of Minnesota.  
 TRAVIS JOHN JONES  
 Signature: *Travis Jones*  
 Date: 06/04/2021 License # 54688





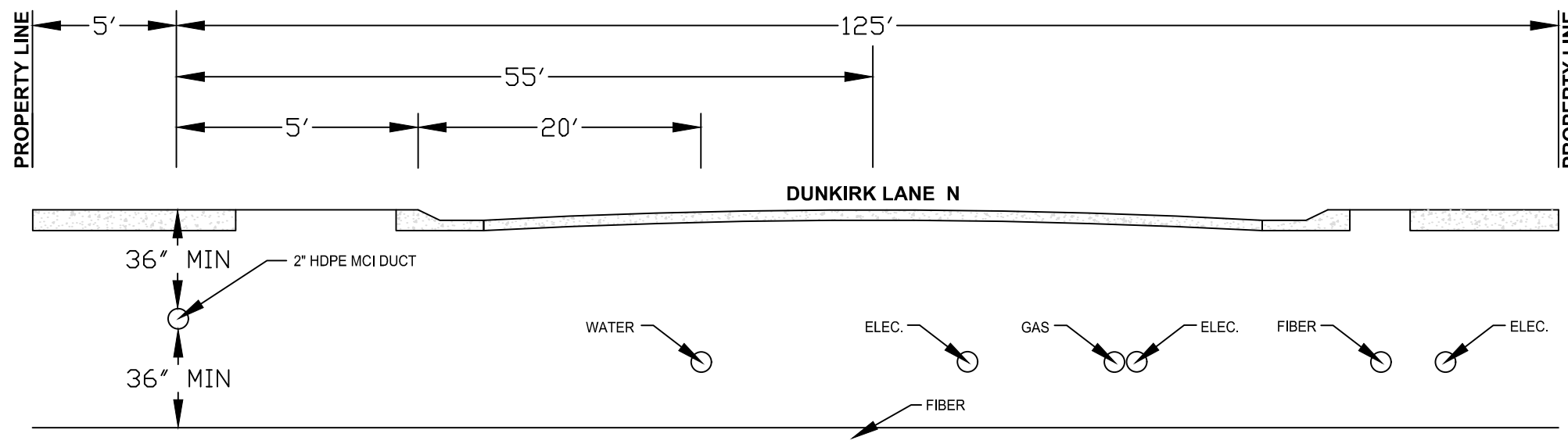
NOTE: DEPTHS OF UTILITES UNKNOWN,  
WILL BE LOCATED AT TIRS  
OF CONSTRUCTION.

PROJECT: SAMS MAPLE GROVE

ST. PAUL, MN

CLARIFICATION NO. | QUANTITY

C100	
C101	
C102	
C104 (24x36)	
C105 (30x60)	
C106	
C107	
C108	
C110	
C111	
C112	
C114	
C115	
C200	
C300	
C301	
C302	
C303	
C304	
C103	



MCI<sup>iro</sup>  
ACCESS TRANSMISSION SERVICES, LLC



OUTSIDE PLANT CONSTRUCTION

TITLE: BORE PROFILE

SAMS MAPLE GROVE

DATE: 03/22/21

ENGINEER: KLJ

DRAWN BY: RS

REVISIONS

DATE:	DESCRIPTION	INITIAL

EXCEPT AS MAY BE OTHERWISE PROVIDED BY CONTRACT, THESE DRAWINGS AND SPECIFICATIONS SHALL REMAIN THE PROPERTY OF MCI COMMUNICATIONS SERVICES, INC. BOTH BEING ISSUED IN STRICT CONFIDENCE AND SHALL NOT BE REPRODUCED, COPIED OR USED FOR ANY PURPOSE WITHOUT SPECIFIC WRITTEN PERMISSION.

SCALE

HORIZONTAL: NTS

VERTICAL: NTS

MP TO MP

SHEET 8 OF 10

FILE: BORE\_PROFILE\_783

I hereby certify that this plan, specification, or report was prepared by me or under my direct supervision and that I am a duly Licensed Professional Engineer under the laws of the State of Minnesota.  
TRAVIS JOHN JONES  
Signature: *Travis Jones*  
Date: 06/04/2021 License # 54688





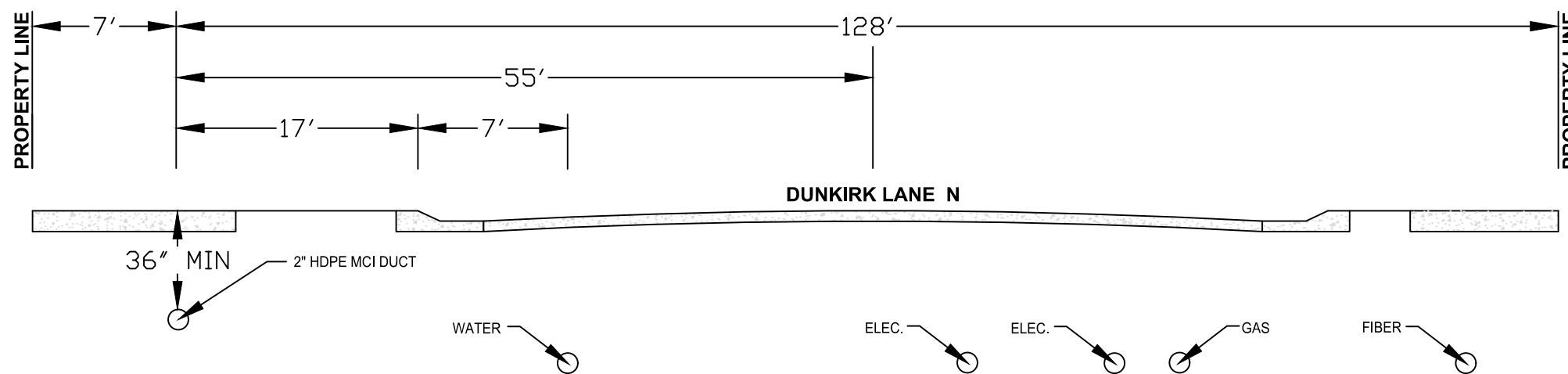
NOTE: DEPTHS OF UTILITES UNKNOWN,  
WILL BE LOCATED AT TIRS  
OF CONSTRUCTION.

PROJECT: SAMS MAPLE GROVE

ST. PAUL, MN

CLARIFICATION NO. | QUANTITY

C100	
C101	
C102	
C104 (24x36)	
C105 (30x60)	
C106	
C107	
C108	
C110	
C111	
C112	
C114	
C115	
C200	
C300	
C301	
C302	
C303	
C304	
C103	



MCI  
ACCESS TRANSMISSION SERVICES, LLC



OUTSIDE PLANT CONSTRUCTION

TITLE: BORE PROFILE

SAMS MAPLE GROVE

DATE: 03/22/21

ENGINEER: KLJ

DRAWN BY: RS

REVISIONS

DATE:	DESCRIPTION	INITIAL

EXCEPT AS MAY BE OTHERWISE PROVIDED BY CONTRACT, THESE DRAWINGS AND SPECIFICATIONS SHALL REMAIN THE PROPERTY OF MCI COMMUNICATIONS SERVICES, INC. BOTH BEING ISSUED IN STRICT CONFIDENCE AND SHALL NOT BE REPRODUCED, COPIED OR USED FOR ANY PURPOSE WITHOUT SPECIFIC WRITTEN PERMISSION.

SCALE

HORIZONTAL: NTS

VERTICAL: NTS

MP TO MP

SHEET 9 OF 10

FILE: BORE\_PROFILE\_783

I hereby certify that this plan, specification, or report was prepared by me or under my direct supervision and that I am a duly Licensed Professional Engineer under the laws of the State of Minnesota.  
TRAVIS JOHN JONES

Signature: Travis Jones  
Date: 06/04/2021 License # 54688





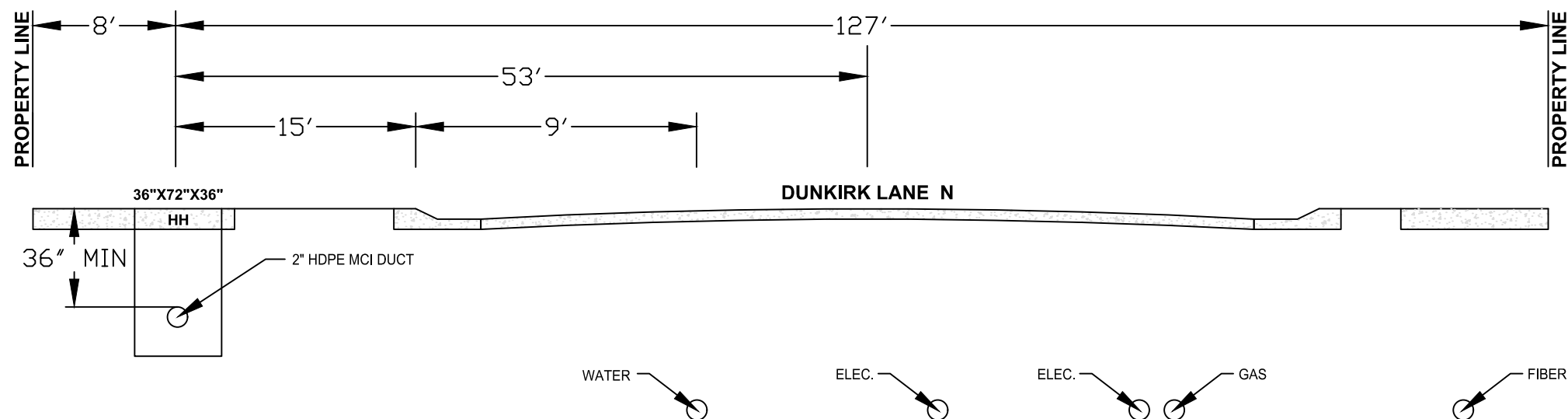
NOTE: DEPTHS OF UTILITES UNKNOWN,  
WILL BE LOCATED AT TIRS  
OF CONSTRUCTION.

PROJECT: SAMS MAPLE GROVE

ST. PAUL, MN

CLARIFICATION NO. QUANTITY

C100	
C101	
C102	
C104 (24x36)	
C105 (30x60)	
C106	
C107	
C108	
C110	
C111	
C112	
C114	
C115	
C200	
C300	
C301	
C302	
C303	
C304	
C103	



MCI  
ACCESS TRANSMISSION SERVICES, LLC



OUTSIDE PLANT CONSTRUCTION

TITLE: BORE PROFILE

SAMS MAPLE GROVE

DATE: 03/22/21

ENGINEER: KLJ

DRAWN BY: RS

REVISIONS

DATE:	DESCRIPTION	INITIAL

EXCEPT AS MAY BE OTHERWISE PROVIDED BY CONTRACT, THESE DRAWINGS AND SPECIFICATIONS SHALL REMAIN THE PROPERTY OF MCI COMMUNICATIONS SERVICES, INC. BOTH BEING ISSUED IN STRICT CONFIDENCE AND SHALL NOT BE REPRODUCED, COPIED OR USED FOR ANY PURPOSE WITHOUT SPECIFIC WRITTEN PERMISSION.

SCALE

HORIZONTAL: NTS

VERTICAL: NTS

MP TO MP

SHEET 10 OF 10

FILE: BORE\_PROFILE\_783

I hereby certify that this plan, specification, or report was prepared by me or under my direct supervision and that I am a duly Licensed Professional Engineer under the laws of the State of Minnesota.  
TRAVIS JOHN JONES  
Signature: *Travis Jones*  
Date: 06/04/2021 License # 54688