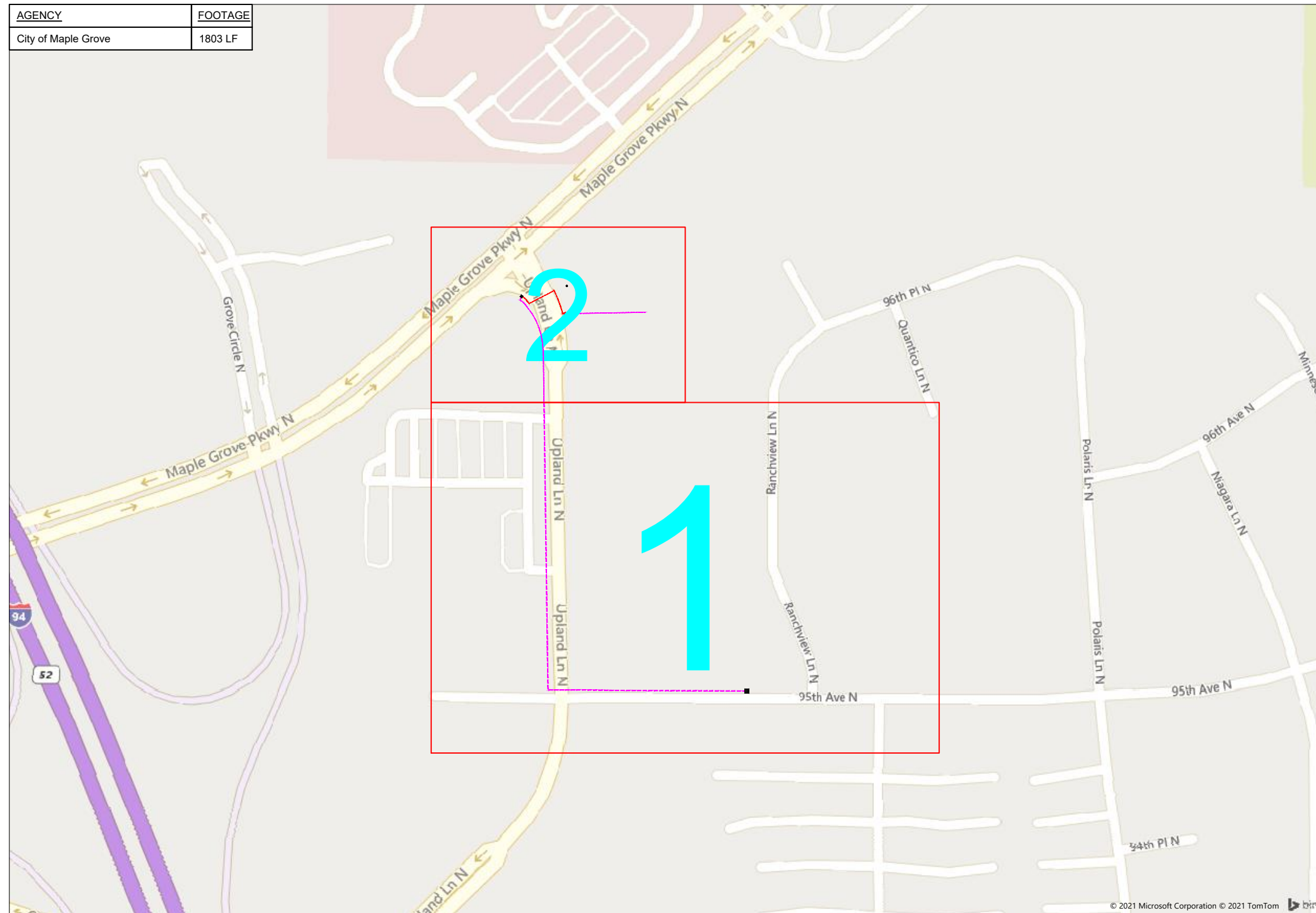


81601- Falcon National Bank



9600 Upland Ln N, Maple Grove, MN 55369



1" = -

Route	-
City	Maple Grove, MN
County	Hennepin
Filename	Falcon National Bank
Work Order #	81601

arvig

160 2nd St SW
Perham, MN 56573
(218) 346-5500

TRACKING	
Staked By:	Brian Adams 02/04/2021
Drafted By:	AMB 02/05/2021
Project Manager	Randy Anderson 218-347-3615
As-Built By:	-
Revision	-

Route Footage	2022'
Total Underground	2022'
Total Aerial	0'
Underground (New)	190'
Aerial (New)	0'
Overpull (Ex Duct)	1832'
Overlash (Ex Strand)	0'
Plow	0'
Bore	190'
New Vaults	1
New Peds	0

GSOC
GOPHER STATE ONE CALL
1-800-252-1116
www.gopherstateonecall.org

Prepared by:

compass
consultants inc.
Perham, MN 218-346-3600
TrustCompass.com

OVERVIEW

Legend

Fiber Linetypes

	Proposed Underground Fiber - Bore
	Proposed Underground Fiber - Plow
	Proposed UG Fiber in Existing Duct
	Existing Underground Fiber
	Proposed Aerial Fiber
	Proposed Aerial Overlash
	Existing Aerial Fiber
	Proposed Aerial Strand
	Existing Aerial Strand

Other Linetypes

	Rail Road
	Fence
	Retaining Wall
	Storm Sewer
	Sanitary Sewer
	Gas Line
	Tele./Comm. Line
	Water Line
	Electric Line
	Street light/Traffic signal
	District Cooling
	District Heating
	Force Main
	Other Utility or Unknown
	Utility Easement

Abbreviations

- CL - Center Line
- R/W - Right of Way
- BOC - Back of Curb
- FC - Front of Curb
- EOR - Edge of Road
- S/W - Sidewalk
- HH - Handhole
- MH - Manhole
- PRT - Preterminated Cable
- PRG - Pigtail Cable

Symbols

	Proposed Handhole
	Existing Handhole
	Reference Handhole
	Manhole
	Proposed Cabinet
	Existing Cabinet
	Bore Pit
	Proposed Splice Point
	Existing Splice Point
	Power Pole
	Proposed Slack Coil
	Existing Slack Coil
	Proposed Anchor/Down Guy
	Existing Anchor/Down Guy
	Proposed Riser
	Existing Riser
	Aerial Bond
	Aerial Ground
	BM53T - Fiber Marker
	BM53 - Fiber Marker
	Proposed PED
	Existing PED
	Proposed Splice Case
	Existing Splice Case
	Street Light
	Traffic Light
	Traffic Light
	Transformer
	Hydrant
	Catch Basin
	Tree

Materials	
48 Fiber	2347
1.25" Duct	367
Vault (Medium)	1
Ground Rod	1



1" = -

Route	-
City	Maple Grove, MN
County	Hennepin
Filename	Falcon National Bank
Work Order #	81601

160 2nd St SW
Perham, MN 56573
(218) 346-5500

TRACKING	
Staked By:	Brian Adams 02/04/2021
Drafted By:	AMB 02/05/2021
Project Manager	Randy Anderson 218-347-3615
As-Built By:	-
Revision	-

Route Footage	2022'
Total Underground	2022'
Total Aerial	0'
Underground (New)	190'
Aerial (New)	0'
Overpull (Ex Duct)	1832'
Overlash (Ex Strand)	0'
Plow	0'
Bore	190'
New Vaults	1
New Peds	0

GSOC
GOPHER STATE ONE CALL
1-800-252-1116
www.gopherstateonecall.org

Prepared by:
 compass consultants inc.
Perham, MN 218-346-3600
TrustCompass.com

LEGEND

Existing Access Points



69305-01



69305-01



1" = -

Route	-
City	Maple Grove, MN
County	Hennepin
Filename	Falcon National Bank
Work Order #	81601



160 2nd St SW
Perham, MN 56573
(218) 346-5500

TRACKING

Staked By:	Brian Adams	02/04/2021
Drafted By:	AMB	02/05/2021
Project Manager	Randy Anderson	218-347-3615
As-Built By:	-	-
Revision	-	-

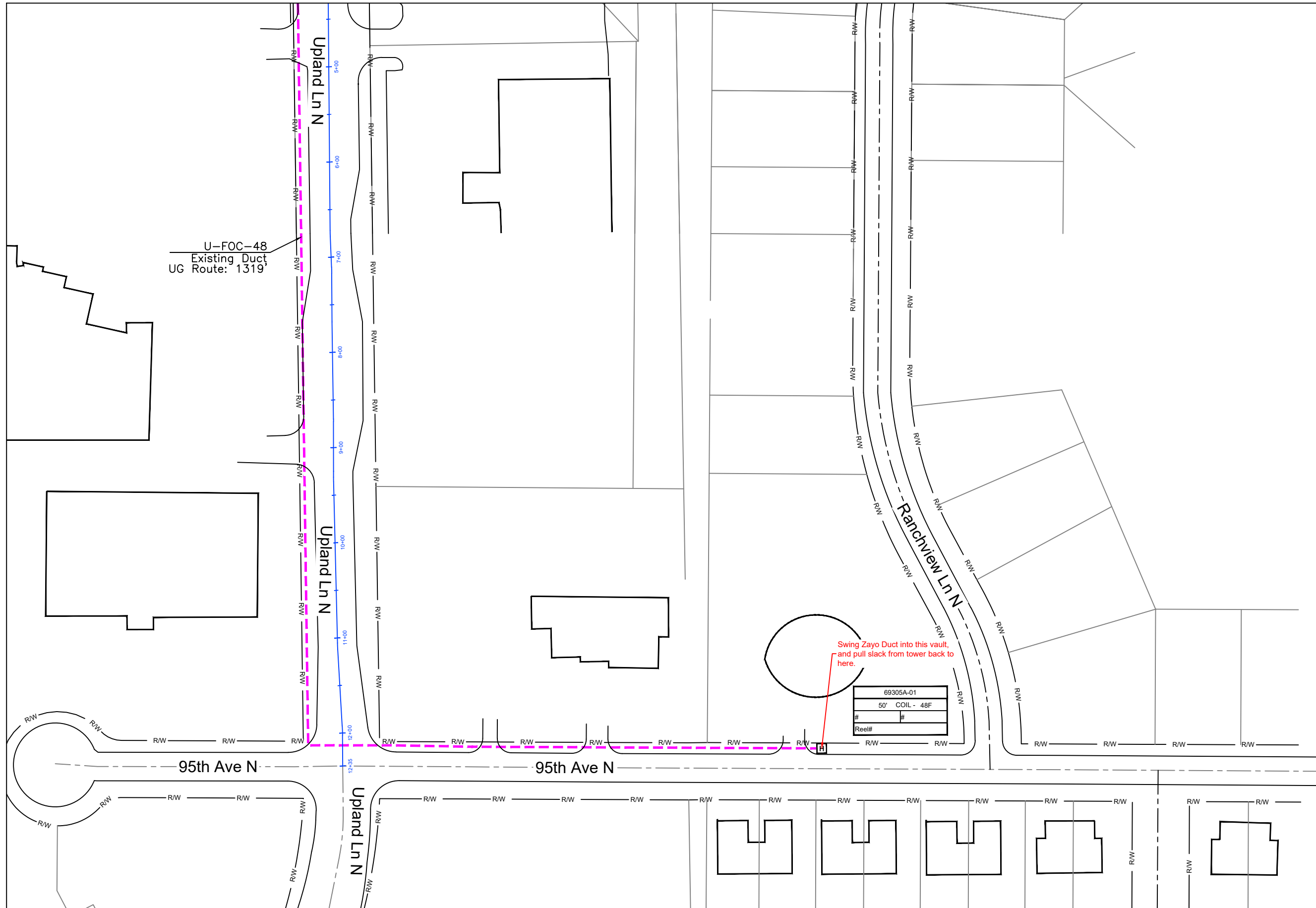
GSOC

GOPHER STATE ONE CALL
1-800-252-1116
www.gopherstateonecall.org

Prepared by:



EXISTING AP



1" = 100'

Route	-
City	Maple Grove, MN
County	Hennepin
Filename	Falcon National Bank
Work Order #	81601

arvig

160 2nd St SW
Perham, MN 56573
(218) 346-5500

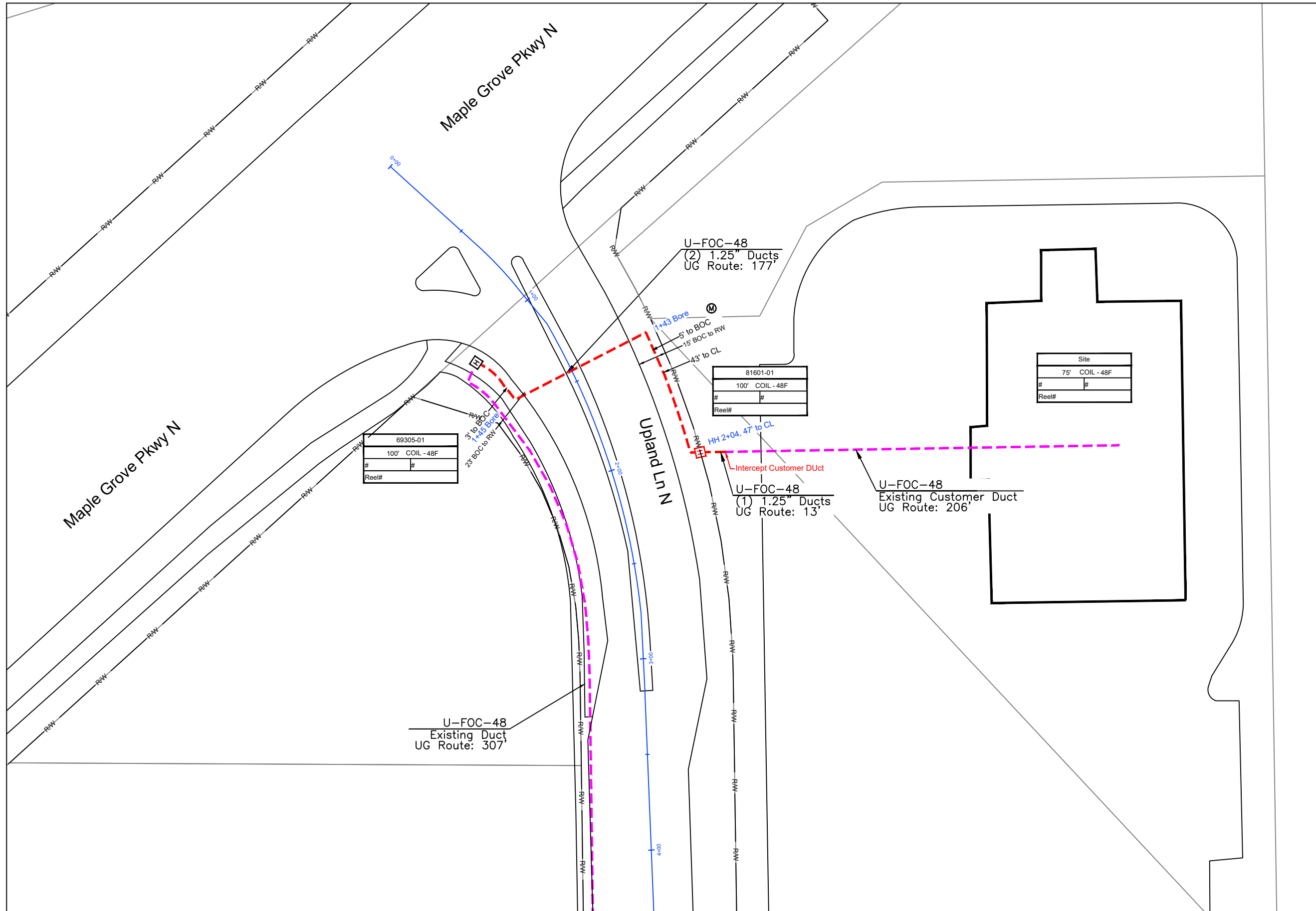
TRACKING	
Staked By:	Brian Adams 02/04/2021
Drafted By:	AMB 02/05/2021
Project Manager	Randy Anderson 218-347-3615
As-Built By:	-
Revision	-

GSOC

GOPHER STATE ONE CALL
1-800-252-1116
www.gopherstateonecall.org

Prepared by:

compass
consultants inc.
Perham, MN 218-346-3600
TrustCompass.com



1" = 50'

Route	-
City	Maple Grove, MN
County	Hennepin
Filename	Falcon National Bank
Work Order #	81601

arvig

160 2nd St SW
Perham, MN 56573
(218) 346-5500

TRACKING	
Staked By:	Brian Adams 02/04/2021
Drafted By:	AMB 02/05/2021
Project Manager	Randy Anderson 218-347-3615
As-Built By:	-
Revision	-

GSOC
GOPHER STATE ONE CALL
1-800-252-1116
www.gopherstateonecall.org

Prepared by:

compass
consultants inc.
Perham, MN 218-346-3600
TrustCompass.com

81601-02