

ABANDONMENT PROCEDURES

See Construction Procedures for installation of mains and services prior to abandonments.

- This project includes work on one-way feed mains. Ensure all proposed main is in service, all taps are completed and all services have been transferred to new main prior to abandonments.

Cut and Abandon existing main as shown. Purge abandoned mains until essentially 0% gas reading is obtained on Combustible Gas Indicator. See CenterPoint Energy Construction and Service Manual Section CS-B-1.110 and Section CS-B-1.230 for purging mains out of service using air movers. Contact Engineering with questions.

It is a requirement on the Hennepin County permit that they be notified 24 hours prior to the start of any excavation. Please read the permit prior to starting excavation. Please call the county at 612-596-0339 or the individual county inspector's cell phone number listed on the permit. north - Jake Cardinal -- 612-328-1622 south - Bob Rumsch -- 612-490-5416

THE CALL IS TO BE MADE 24 HOURS PRIOR TO CONSTRUCTION. PLEASE REMEMBER THAT THIS IS A COUNTY REQUIREMENT.

CONSTRUCTION NOTES

Install new main as shown or as directed in field at time of installation. NOTE: BORE ALL PAVED STREETS AND DRIVEWAYS

Minimum depth requirements for crossings of state highways and county roads is 60". Minimum depth requirements for crossings of city streets and township roads is 48". Minimum depth for parallel installations on state highways and county roads is 36". Minimum depth for parallel installations on city streets and township roads is 30". All steel pipe welds to be coated with 2 part epoxy.

INSTALL REINFORCING SQUEEZE OFF SUPPORT CLAMP ON ALL SQUEEZE OFF POINTS ON ALDYL A PIPE.

Procedure for tapping or making tie-ins to existing gas mains: Verify existing gas main size, type, and location prior to tapping or making tie-in. Monitor and verify, using a pressure gauge, existing gas main Pressure Class within the bell hole of tap location or tie-in location prior to tapping or making tie-in.

Pipe < 4-inches Diameter (Unregulated PCB area): Project area cleared for internal impacts. Pipe being removed is unregulated for disposal if coating does not exist or is non-astbestos. Refer to CNP Construction and Service Manual CS-B-1.110, CS-B-1.330, and CS-B-1.100, for pipe to be abandoned.

CONSTRUCTION PROCEDURES

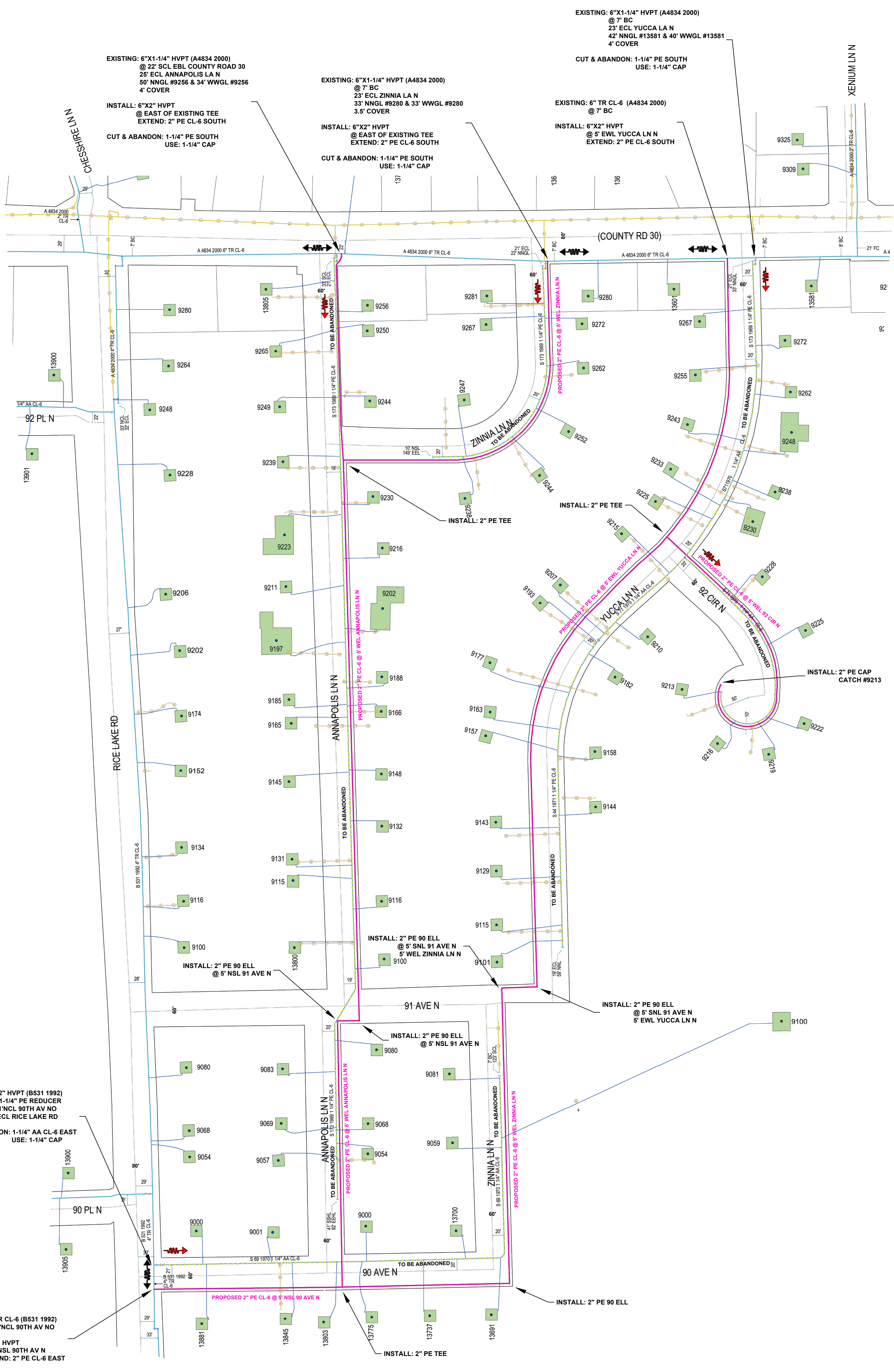
Install: Clean and Test; and Put in Service; Proposed new main per CenterPoint Energy Construction and Services Manual.

Purge new main until essentially 100% reading is obtained on Combustible Gas Indicator. See CenterPoint Energy Construction and Service Manual Section CS-B-1.230 for purging mains into service.

Complete all Service / Meter Work as directed. (See Service Survey) See Abandonment Procedures for abandonment and purging procedures.

Install a marker ball at a new end of main, at a valve, at each ell of a horizontal offset, at road crossings and at any fitting or pressure control identified as needing to be located in the future. Refer to CenterPoint Energy Construction and Service Manual section CS-B-1.310 for installation procedures.

AAPE Pipe Sample For AAPE pipe installed from 1968 to 1973 collect a two foot long pipe sample, document Main Auth and sample location then deliver to Golden Valley Lab.



CenterPoint Energy logo, Minnesota Region, Proprietary and Confidential, Project # 96558686, M52900 MAPLE GROVE, ONE CALL: Hennepin, SW10 T119/R22, NE15 T119/R22, NW15 T119/R22, SE10 T119/R22, \* is this Page

LEGEND: ACTIVE MAIN (solid blue line), DESIGNED MAIN (dashed blue line), PROPOSED ABANDONED/OUT OF SERVICE MAIN (dashed yellow line), ABANDONED/OUT OF SERVICE MAIN (dashed red line)

PIPE REQUIRED: 5514' 2" PE CL-6, 5514' PIPE

PROPOSED ABANDONED PIPE: 2863' 1 1/4" PE CL-6, 1933' 1 1/4" AA CL-6, 39' 1 1/4" TR CL-6, 4835' PIPE

COPIES: PIPELINE INTEGRITY PACKET: N, STATION MANAGER: N, DO NUMBER: N/A, CORROSION: EMP: N, FOLLOW INTERNAL PIPE SAMPLING REQUIREMENTS? N, SURVEYOR REQUIRED? N, RETURN PACKET TO ENG? N, GFIP #: N/A, PERMITS: HENNEPIN COUNTY CITY OF MAPLE GROVE

PROJECT DESCRIPTION: SP74 Annapolis Ln N, DESIGNER: Angela Cao, PHONE #: 612-321-5167, DRAWN BY: Angela Cao, DESIGN DATE: 12/30/2020, REVISION INFO, Main Ssr, SCALE 1" = 100' SHEET 1 OF 1

I hereby certify that this plan, specification, or report was prepared by me or under my direct supervision and that I am a duly Licensed Professional Engineer under the laws of the state of Minnesota. Signature: Daniel G. Christensen, Typed or Printed Name: DANIEL G. CHRISTENSEN, Date: 01/28/2021 License Number: 46588