

Perm: + Zahra
Design

Hot!!!

JT 21762
~~Task~~

Issued
T-Ray
11/22/16

70'

Comcast

Plant Maintenance Request

Job number

NW452

Node DA161

City

Maple Grove

Date

1/22/2016

Address 17451 83rd Ave

Cross Street

Maint tech Name:

Joe Krick

Tech #

1523

Phone:

(612) 875-6448

Span type span (temped) Span (no temp) Digup Other Spring

Priority 1 a.) Customer Impacting Issue b.) Vulnerable temp c.) TIE related ticket

2 a.) Aerial temp cables b.) Any temp - no liability issues

3 a.) Identified cables - no customer impact b.) Leaks - no customer impact

Work is an Emergency (outage issue)

Emergency

Normal

Work is a :

Cable Replacement

Broken Lashing

Pole Transfer

Damaged Ped

Utility Violation

Storm Damage

Leakage

Other

MDU? (Attachments, lockboxes, cable on the roof)

Yes

No

Type of Cable

Size: 625

Aerial

UG Bare

UG Duct

Self Support

Footage:

Aerial

Underground 70'

Bore Required

Yes

No

If yes, what type and how many

1 Driveway

Cause for referral:

RTM

Leakage

Rapid Resolve (Flux)

Damage/Outage

NH/MH

(check one)

Priority plant fault

LPI

Service Call Alert

PI Ticket

Other

Explain Damage:

Cable is damaged under the driveway. There is no leak, likely a splice has water in it. Replace from the 23v tap, back 70'. Dig up and splice. Cable is located and marked where to run the new cable to and dig.

Maintenance Department Use Only

Date Received

Capitol

Yes

No

Maint complete

Total Tech Hours

Techs

A Highlighted plant map must be attached

To help expedite this maintenance request, information on this form needs to be filled out completely and signed by a technician and a supervisor requesting the repair.

Tech Signature

Joe Krick

Tech #

1523

Date

1/22/2016

Supervisor Signature

Construction Department Use Only

Date received

Project #

Construction Completed

Coordinator Signature

Supervisor Signature

SOFTBALL FIELD

DATE	TYPE	1	2	3	4	5
25.3	18.5	76.0	135.0			
19.5	15.4	83.3	150.0			
20.0	16.0	4	0			
3	17.5	1	1	1	1	1
16.00	16.3					

SPRINT TOWER
17380 82ND AVE N
MAPLE GROVE
MS63XC418

PLAYGROUND

TENNIS COURTS

82ND AVE N

644'

999'

212'

168'

331'

207'

1/4 502'

207'

212'

212'

212'

212'

212'

212'

212'

212'

212'

212'

SPRINT OWNED
2" DUCT 165'

SPRINT OWNED
2" DUCT 250'

SPRINT OWNED
2" DUCT 168'

SPRINT OWNED
2" DUCT 168'

SPRINT OWNED
2" DUCT 168'

SPRINT OWNED
2" DUCT 168'

SPRINT OWNED
2" DUCT 168'

SPRINT OWNED
2" DUCT 168'

SPRINT OWNED
2" DUCT 168'

SPRINT OWNED
2" DUCT 168'

SPRINT OWNED
2" DUCT 168'

SPRINT OWNED
2" DUCT 168'

SPRINT OWNED
2" DUCT 168'

SPRINT OWNED
2" DUCT 168'

SPRINT OWNED
2" DUCT 168'

SPRINT OWNED
2" DUCT 168'

SPRINT OWNED
2" DUCT 168'

SPRINT OWNED
2" DUCT 168'

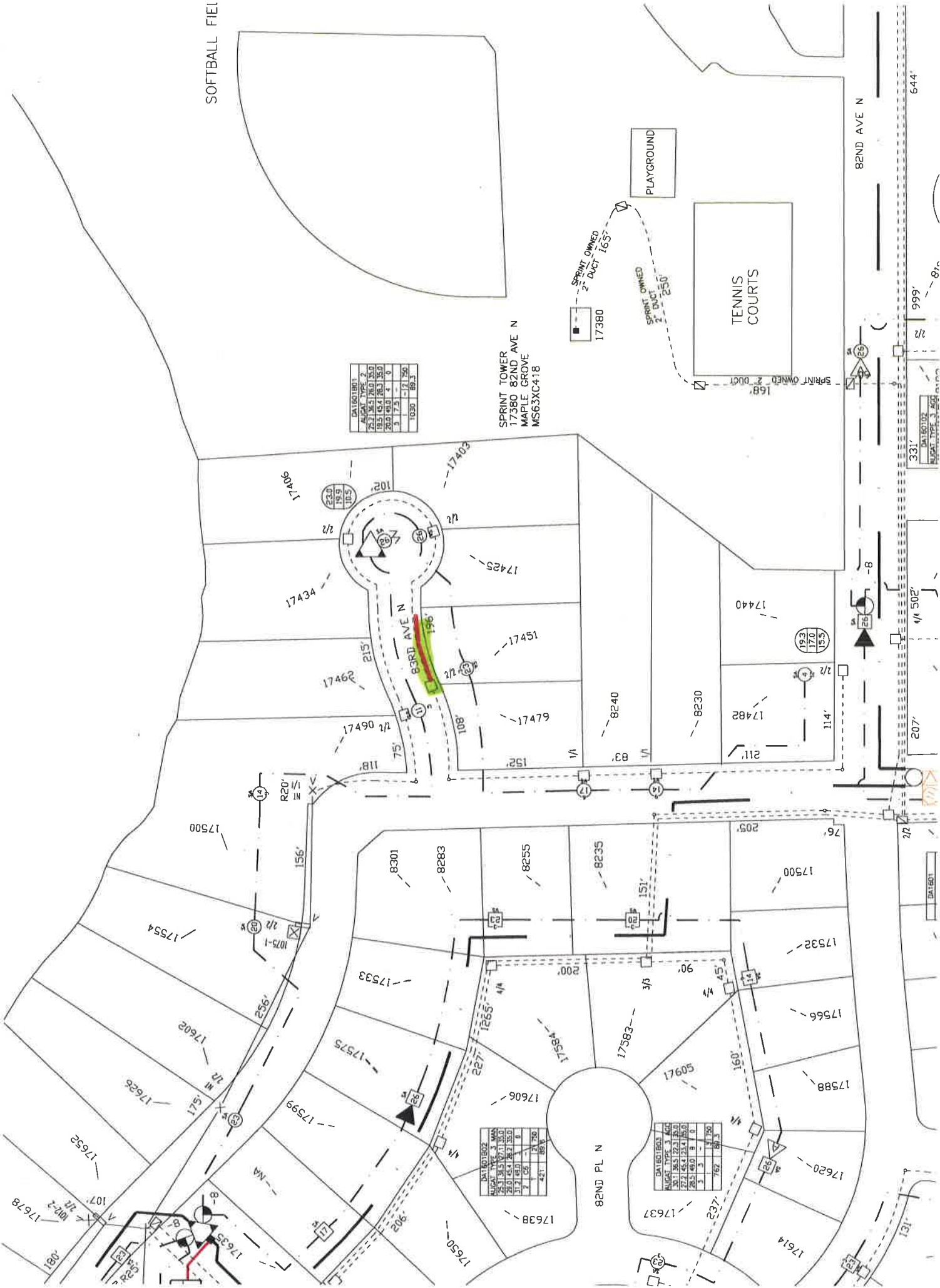
SPRINT OWNED
2" DUCT 168'

SPRINT OWNED
2" DUCT 168'

SPRINT OWNED
2" DUCT 168'

SPRINT OWNED
2" DUCT 168'

SPRINT OWNED
2" DUCT 168'



DATE	TYPE	1	2	3	4	5
25.3	18.5	76.0	135.0			
19.5	15.4	83.3	150.0			
20.0	16.0	4	0			
3	17.5	1	1	1	1	1
16.00	16.3					

DATE	TYPE	1	2	3	4	5
25.3	18.5	76.0	135.0			
19.5	15.4	83.3	150.0			
20.0	16.0	4	0			
3	17.5	1	1	1	1	1
16.00	16.3					