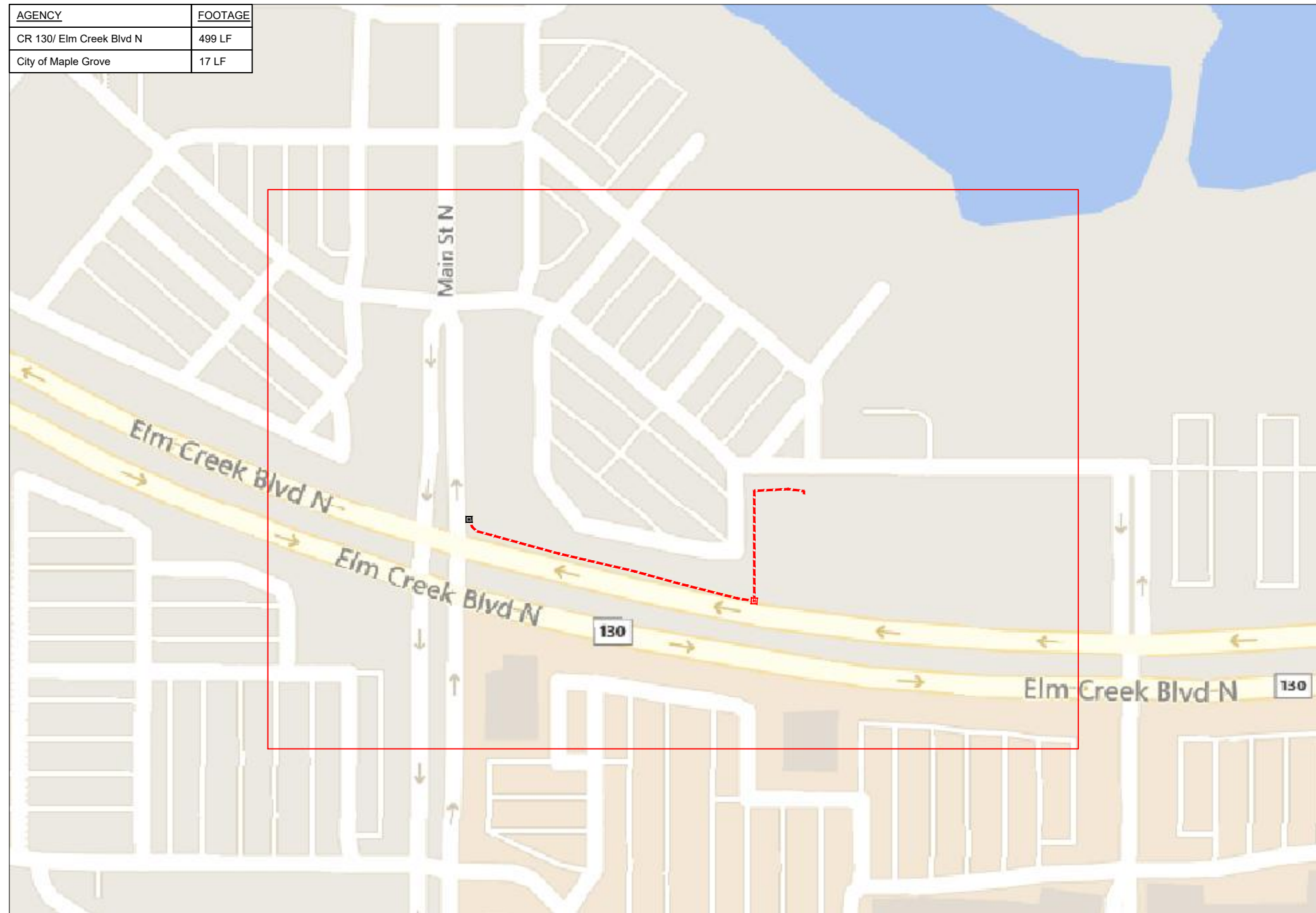


Darden Restaurants/Olive Garden Maple Grove

AGENCY	FOOTAGE
CR 130/ Elm Creek Blvd N	499 LF
City of Maple Grove	17 LF



12520 Elm Creek Blvd N



1" = -

Route	-
City	Maple Grove, MN
County	Hennepin
Filename	Darden Restaurants/Olive Garden
Work Order #	79348

arvig

160 2nd St SW
Perham, MN 56573
(218) 346-5500

TRACKING	
Staked By:	Brian Adams 10/16/20
Drafted By:	TJR 10/19/20
Project Manager	Jen Kadmas
As-Built By:	-
Revision	Rev #1 -

Construction Totals	
Route Footage	788
Total Underground	788
Total Aerial	0
Underground (New)	788
Aerial (New)	0
Overpull (Ex Duct)	0
Overlash (Ex Strand)	0
Plow	0
Bore	788
New Vaults	1
New Peds	0

GSOC
GOPHER STATE ONE CALL
1-800-252-1116
www.gopherstateonecall.org

Prepared by:

compass
consultants inc.
Perham, MN 218-346-3600
TrustCompass.com

Overview

Legend

Fiber Linetypes

	Proposed Underground Fiber - Bore
	Proposed Underground Fiber - Plow
	Proposed UG Fiber in Existing Duct
	Existing Underground Fiber
	Proposed Aerial Fiber
	Proposed Aerial Overlash
	Existing Aerial Fiber
	Proposed Aerial Strand
	Existing Aerial Strand

Other Linetypes

	Rail Road
	Fence
	Retaining Wall
	Storm Sewer
	Sanitary Sewer
	Gas Line
	Tele./Comm. Line
	Water Line
	Electric Line
	Street light/Traffic signal
	District Cooling
	District Heating
	Force Main
	Other Utility or Unknown
	Utility Easement

Abbreviations

- CL - Center Line
- R/W - Right of Way
- BOC - Back of Curb
- FC - Front of Curb
- EOR - Edge of Road
- S/W - Sidewalk
- HH - Handhole
- MH - Manhole
- PRT - Preterminated Cable
- PRG - Pigtail Cable

Symbols

	Proposed Handhole
	Existing Handhole
	Refrence Handhole
	Manhole
	Proposed Cabinet
	Existing Cabinet
	Bore Pit
	Proposed Splice Point
	Existing Splice Point
	Power Pole
	Proposed Slack Coil
	Existing Slack Coil
	Proposed Anchor/Down Guy
	Existing Anchor/Down Guy
	Proposed Riser
	Existing Riser
	Aerial Bond
	Aerial Ground
	BM53T - Fiber Marker
	BM53 - Fiber Marker
	Proposed PED
	Existing PED
	Proposed Splice Case
	Existing Splice Case
	Street Light
	Traffic Light
	Traffic Light
	Transformer
	Hydrant
	Catch Basin
	Tree

Construction Totals

Route Footage	788
Total Underground	788
Total Aerial	0
Underground (New)	788
Aerial (New)	0
Overpull (Ex Duct)	0
Overlash (Ex Strand)	0
Plow	0
Bore	788
New Vaults	1
New Peds	0

Fiber

TBD	0
12F Fiber	0
24F Fiber	0
36F Fiber	0
48F Fiber	1013
72F Fiber	0
96F Fiber	0
144F Fiber	0
288F Fiber	0
12-DE Fiber	0
24-DE Fiber	0
36-DE Fiber	0
48-DE Fiber	0
60-DE Fiber	0
72-DE Fiber	0
96-DE Fiber	0
144-DE Fiber	0
288-DE Fiber	0

Materials

Duct (1.25")	1299
Vault (Small)	0
Vault (Medium)	1
Vault (Large)	0
PED BD5	0
Warning Sign	0
Locate Terminal	1
Ground Rod	1
Strand	0



1" = -

Route	-
City	Maple Grove, MN
County	Hennepin
Filename	Darden Restaurants/Olive Garden
Work Order #	79348

160 2nd St SW
Perham, MN 56573
(218) 346-5500

TRACKING	
Staked By:	Brian Adams 10/16/20
Drafted By:	TJR 10/19/20
Project Manager	Jen Kadmas
As-Built By:	-
Revision	Rev #1 -

GSOC
GOPHER STATE ONE CALL
1-800-252-1116
www.gopherstateonecall.org

Prepared by:
 compass consultants inc.
Perham, MN 218-346-3600
TrustCompass.com

Legend

Existing Access Points



57136-01



57136-01



1" = -

Route	-
City	Maple Grove, MN
County	Hennepin
Filename	Darden Restaurants/Olive Garden
Work Order #	79348



160 2nd St SW
Perham, MN 56573
(218) 346-5500

TRACKING

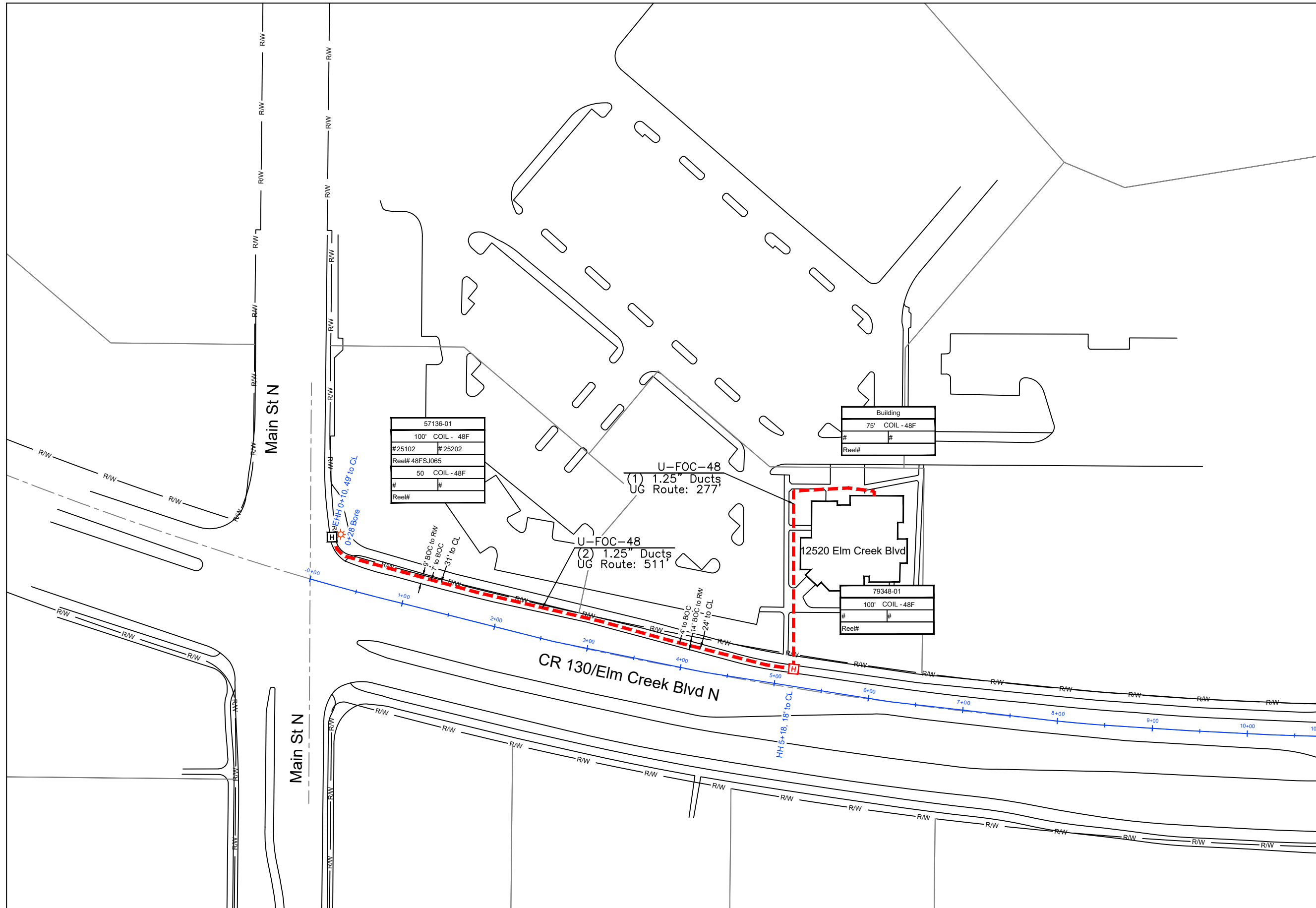
Staked By:	Brian Adams	10/16/20
Drafted By:	TJR	10/19/20
Project Manager	Jen Kadmas	
As-Built By:	-	-
Revision	Rev #1	-

GSOC

GOPHER STATE ONE CALL
1-800-252-1116
www.gopherstateonecall.org



Existing AP



1" = 100'

Route	-
City	Maple Grove, MN
County	Hennepin
Filename	Darden Restaurants/Olive Garden
Work Order #	79348



160 2nd St SW
Perham, MN 56573
(218) 346-5500

TRACKING

Staked By:	Brian Adams	10/16/20
Drafted By:	TJR	10/19/20
Project Manager	Jen Kadmas	
As-Built By:	-	-
Revision	Rev #1	-

GSOC

GOPHER STATE ONE CALL
1-800-252-1116
www.gopherstateonecall.org



79348-01