

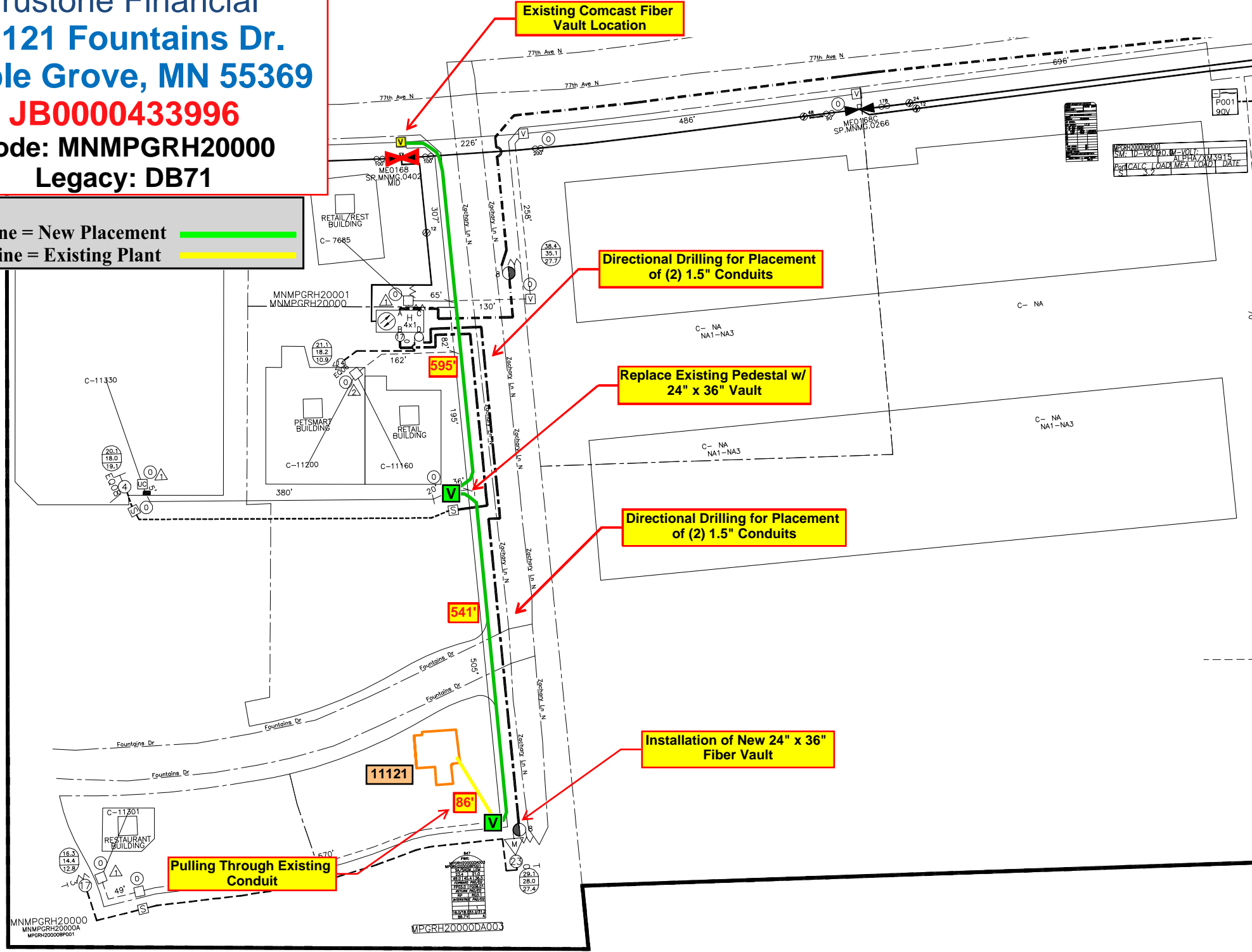
Trustone Financial  
11121 Fountains Dr.  
Maple Grove, MN 55369

**JB0000433996**

Node: MNMPGRH20000

Legacy: DB71

**Key**  
Green Line = New Placement  
Yellow Line = Existing Plant



MNMPGRH20000  
MNMPGRH20000A  
MPCRH20000BP001

MPCRH20000DA003