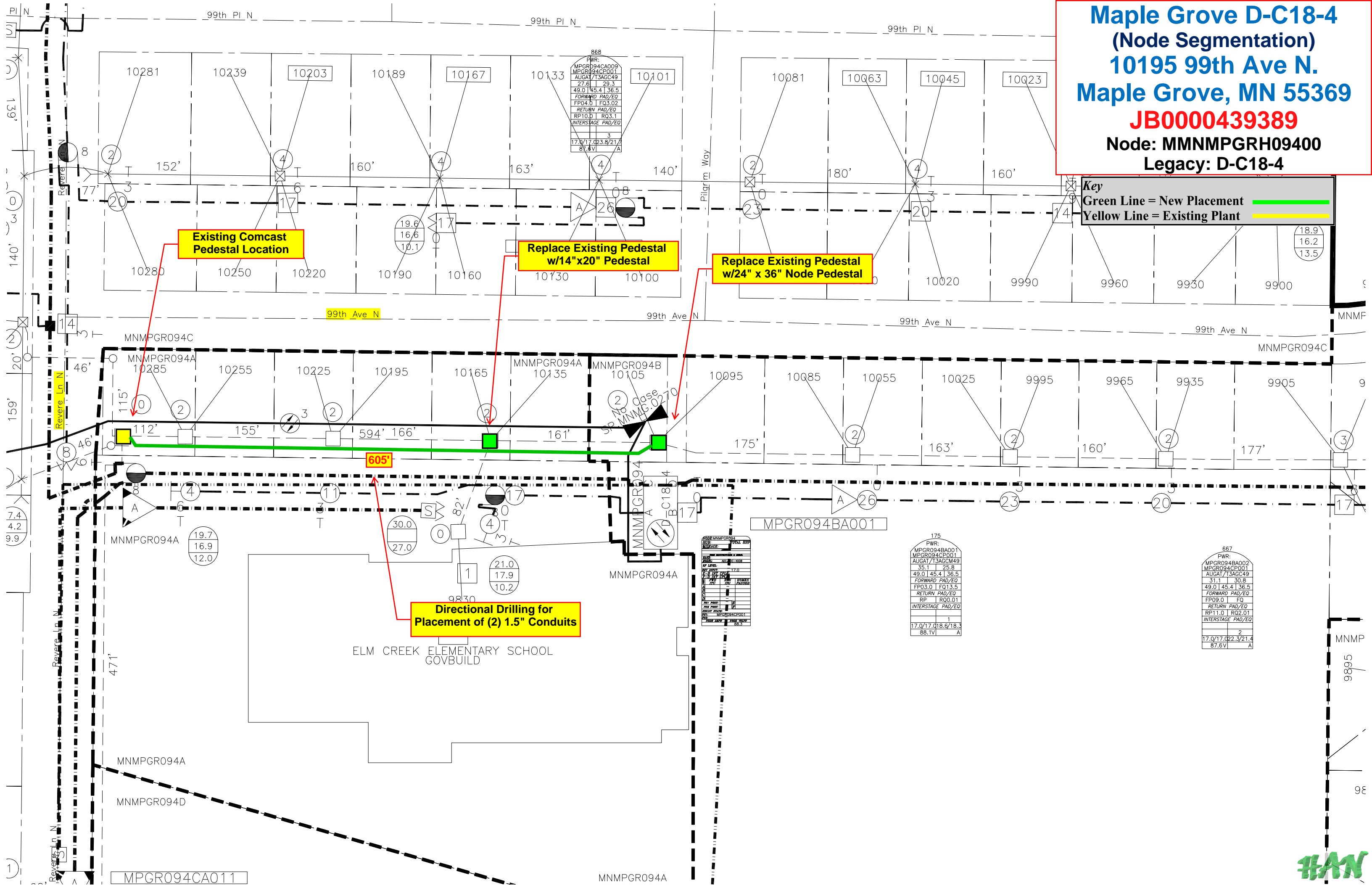


**Maple Grove D-C18-4
(Node Segmentation)
10195 99th Ave N.
Maple Grove, MN 55369
JB0000439389
Node: MMNMPGRH09400
Legacy: D-C18-4**

Key
Green Line = New Placement
Yellow Line = Existing Plant



Existing Comcast Pedestal Location

Replace Existing Pedestal w/14"x20" Pedestal

Replace Existing Pedestal w/24" x 36" Node Pedestal

Directional Drilling for Placement of (2) 1.5" Conduits

868
PWR:
MPGR094CA009
MPGR094CP001
AUGAT/T3AGC49
27.6 | 29.3
49.0 | 45.4 | 36.5
FORWARD PAD/EQ
FP04.0 | FQ3.02
RETURN PAD/EQ
RP10.0 | RQ3.1
INTERSTAGE PAD/EQ
3
17.0/17.023.8/21.7
87.8V A

175
PWR:
MPGR094BA001
MPGR094CP001
AUGAT/T3AGC49
35.1 | 25.8
49.0 | 45.4 | 36.5
FORWARD PAD/EQ
FP03.0 | FQ13.5
RETURN PAD/EQ
RP | RQ0.01
INTERSTAGE PAD/EQ
1
17.0/17.018.6/18.3
88.1V A

667
PWR:
MPGR094BA002
MPGR094CP001
AUGAT/T3AGC49
31.1 | 30.8
49.0 | 45.4 | 36.5
FORWARD PAD/EQ
FP09.0 | FQ
RETURN PAD/EQ
RP11.0 | RQ2.01
INTERSTAGE PAD/EQ
2
17.0/17.022.3/21.4
87.6V A

ELM CREEK ELEMENTARY SCHOOL GOVBUILD

