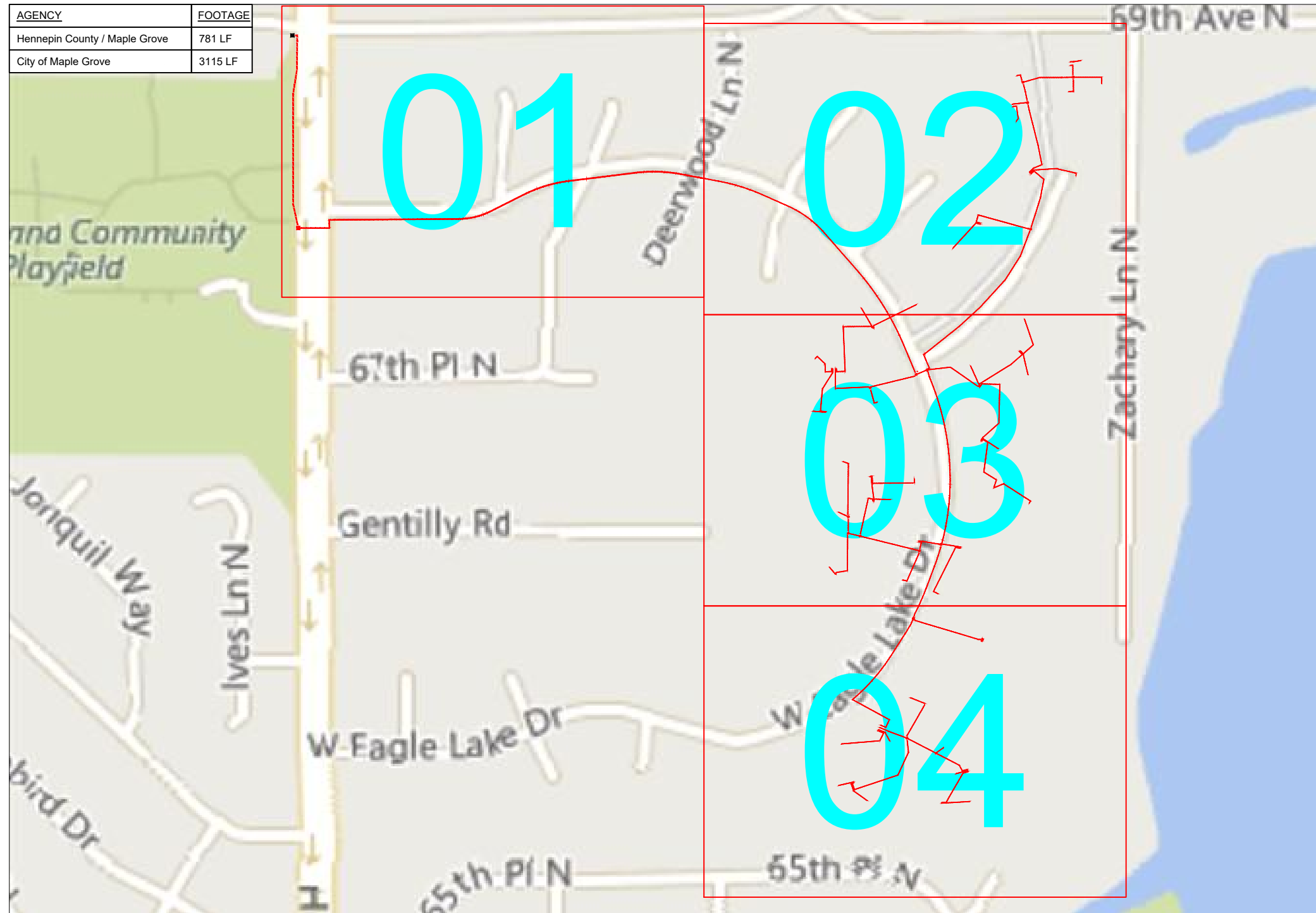


# AMW - Eagle Lake Townhomes

AGENCY	FOOTAGE
Hennepin County / Maple Grove	781 LF
City of Maple Grove	3115 LF



Eagle Lake Ln W



1" = -

Route	-
City	Maple Grove, MN
County	Hennepin
Filename	AMW Eagle Lake Townhomes
Work Order #	78191

**arvig**  
 160 2nd St SW  
 Perham, MN 56573  
 (218) 346-5500

TRACKING	
Staked By:	Brian Adams 8/18/20
Drafted By:	TJR 8/26/20
Project Manager	Kelly Bard
As-Built By:	-
Revision	Rev #1 -

Construction Totals	
Route Footage	12639
Total Underground	12639
Total Aerial	0
Underground (New)	12639
Aerial (New)	0
Overpull (Ex Duct)	0
Overlash (Ex Strand)	0
Plow	0
Bore	13521
New Vaults	4
New Peds	0

**GSOC**  
 GOPHER STATE ONE CALL  
 1-800-252-1116  
 www.gopherstateonecall.org

Prepared by:  
 **compass**  
 consultants inc.  
 Perham, MN 218-346-3600  
 TrustCompass.com

Overview

# Legend

## Fiber Linetypes

	Proposed Underground Fiber - Bore
	Proposed Underground Fiber - Plow
	Proposed UG Fiber in Existing Duct
	Existing Underground Fiber
	Proposed Aerial Fiber
	Proposed Aerial Overlash
	Existing Aerial Fiber
	Proposed Aerial Strand
	Existing Aerial Strand

## Other Linetypes

	Rail Road
	Fence
	Retaining Wall
	Storm Sewer
	Sanitary Sewer
	Gas Line
	Tele./Comm. Line
	Water Line
	Electric Line
	Street light/Traffic signal
	District Cooling
	District Heating
	Force Main
	Other Utility or Unknown
	Utility Easement

## Abbreviations

- CL - Center Line
- R/W - Right of Way
- BOC - Back of Curb
- FC - Front of Curb
- EOR - Edge of Road
- S/W - Sidewalk
- HH - Handhole
- MH - Manhole
- PRT - Preterminated Cable
- PRG - Pigtail Cable

## Symbols

	Proposed Handhole
	Existing Handhole
	Refrence Handhole
	Manhole
	Proposed Cabinet
	Existing Cabinet
	Bore Pit
	Proposed Splice Point
	Existing Splice Point
	Power Pole
	Proposed Slack Coil
	Existing Slack Coil
	Proposed Anchor/Down Guy
	Existing Anchor/Down Guy
	Proposed Riser
	Existing Riser
	Aerial Bond
	Aerial Ground
	BM53T - Fiber Marker
	BM53 - Fiber Marker
	Proposed PED
	Existing PED
	Proposed Splice Case
	Existing Splice Case
	Street Light
	Traffic Light
	Traffic Light
	Transformer
	Hydrant
	Catch Basin
	Tree

## Construction Totals

Route Footage	12639
Total Underground	12639
Total Aerial	0
Underground (New)	12639
Aerial (New)	0
Overpull (Ex Duct)	0
Overlash (Ex Strand)	0
Plow	0
Bore	13521
New Vaults	4
New Peds	0

## Fiber

TBD	0
12F Fiber	0
24F Fiber	0
36F Fiber	0
48F Fiber	4538
72F Fiber	0
144F Fiber	942
288F Fiber	336
1000' 72F Pig Tail	1
1000' 48F Pig Tail	1
500' 72F Pig Tail	1
500' 24F Pig Tail	2
500' 12F Pig Tail	2
250' 48F Pig Tail	2
250' 24F Pig Tail	5
250' 12F Pig Tail	23
50' 12F Pig Tail	1
50' 48F Pig Tail	7

## Materials

Duct (1.25")	16322
Vault ( Small)	0
Vault (Medium)	3
Vault (Large)	1
PED BD5	0
Warning Sign	0
Locate Terminal	4
Ground Rod	4
Strand	0



1" = -

Route	-
City	Maple Grove, MN
County	Hennepin
Filename	AMW Eagle Lake Townhomes
Work Order #	78191

160 2nd St SW  
Perham, MN 56573  
(218) 346-5500

## TRACKING

Staked By:	Brian Adams	8/18/20
Drafted By:	TJR	8/26/20
Project Manager	Kelly Bard	
As-Built By:	-	-
Revision	Rev #1	-

GOPHER STATE ONE CALL  
1-800-252-1116  
www.gopherstateonecall.org

Prepared by:

Perham, MN 218-346-3600  
TrustCompass.com

## Legend

Existing Access Points



Existing Handhole Windstream



1" = -

Route	-
City	Maple Grove, MN
County	Hennepin
Filename	AMW Eagle Lake Townhomes
Work Order #	78191

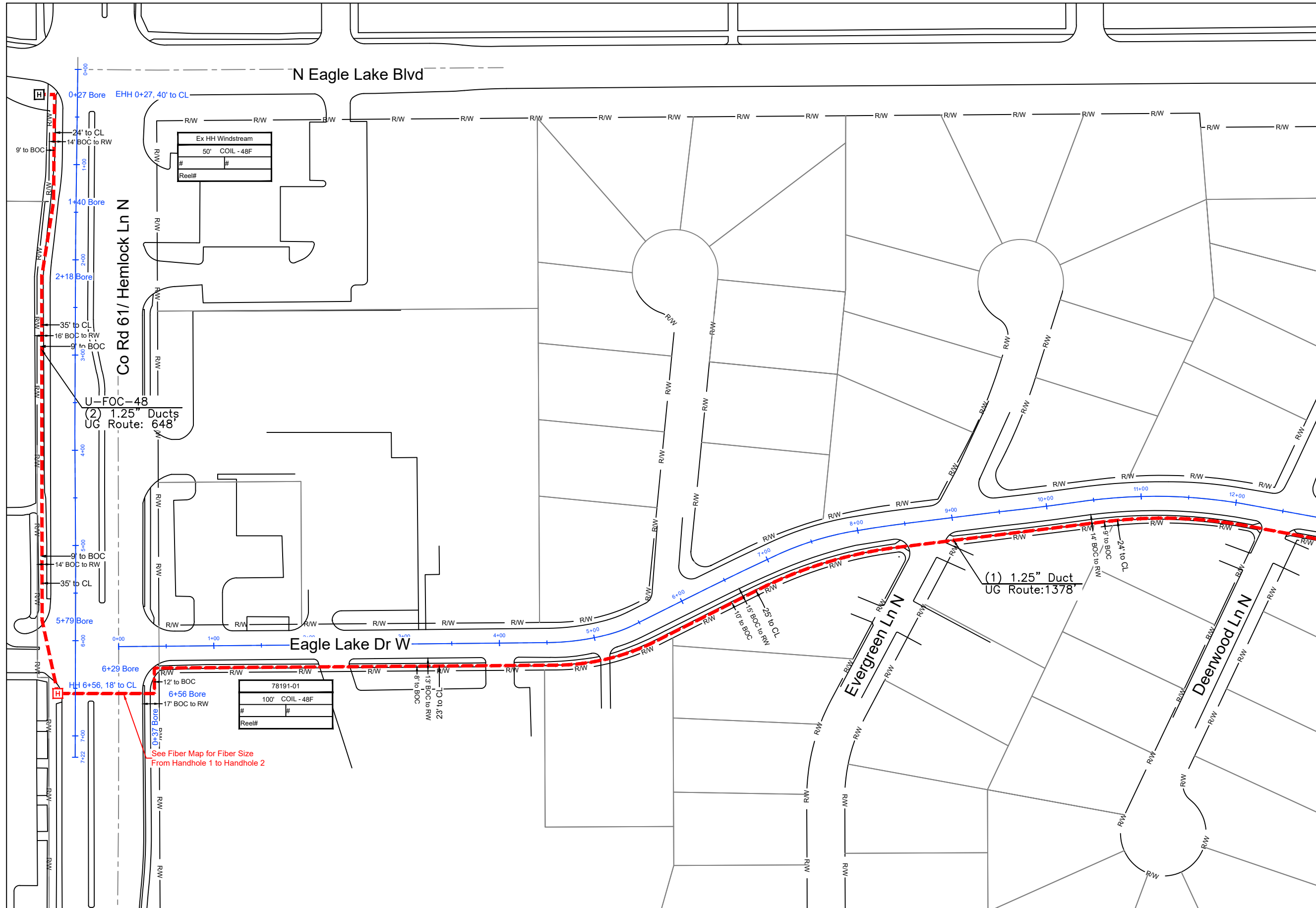
 **arvig**  
160 2nd St SW  
Perham, MN 56573  
(218) 346-5500

TRACKING	
Staked By:	Brian Adams 8/18/20
Drafted By:	TJR 8/26/20
Project Manager	Kelly Bard
As-Built By:	-
Revision	Rev #1 -

**GSOC**  
GOPHER STATE ONE CALL  
1-800-252-1116  
www.gopherstateonecall.org

Prepared by:  
 **compass**  
consultants inc.  
Perham, MN 218-346-3600  
TrustCompass.com

Existing AP



See Fiber Map for Fiber Size  
From Handhole 1 to Handhole 2

See Sheet 78191-02



1" = 100'

Route	-
City	Maple Grove, MN
County	Hennepin
Filename	AMW Eagle Lake Townhomes
Work Order #	78191

**arvig**

160 2nd St SW  
Perham, MN 56573  
(218) 346-5500

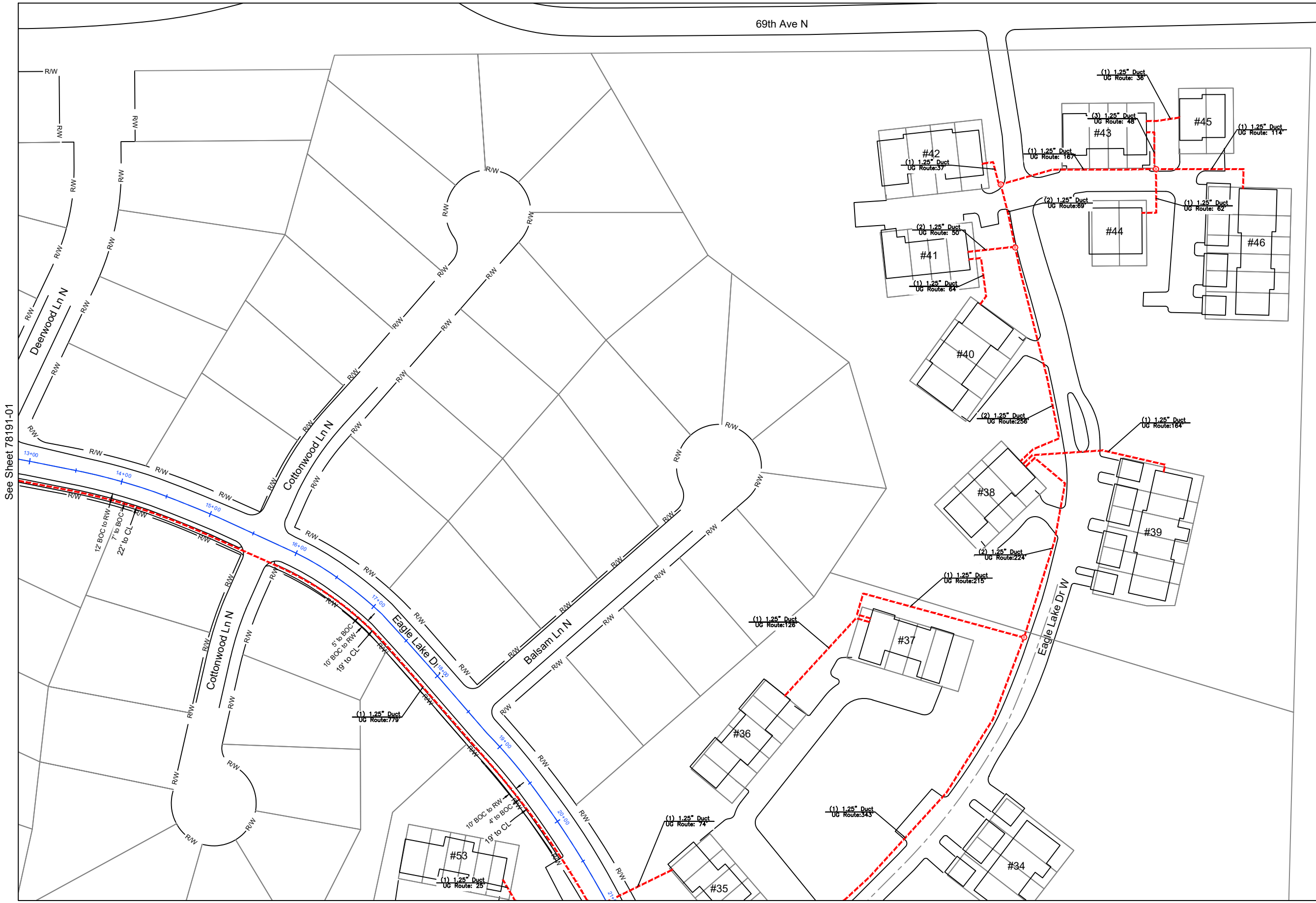
TRACKING	
Staked By:	Brian Adams 8/18/20
Drafted By:	TJR 8/26/20
Project Manager	Kelly Bard
As-Built By:	-
Revision	Rev #1 -

**GSOC**  
GOPHER STATE ONE CALL  
1-800-252-1116  
www.gopherstateonecall.org

Prepared by:

**compass**  
consultants inc.  
Perham, MN 218-346-3600  
TrustCompass.com

78191-01



See Sheet 78191-01

See Sheet 78191-03



1" = 100'

Route	-
City	Maple Grove, MN
County	Hennepin
Filename	AMW Eagle Lake Townhomes
Work Order #	78191

**arvig**

160 2nd St SW  
 Perham, MN 56573  
 (218) 346-5500

TRACKING	
Staked By:	Brian Adams 8/18/20
Drafted By:	TJR 8/26/20
Project Manager	Kelly Bard
As-Built By:	-
Revision	Rev #1 -

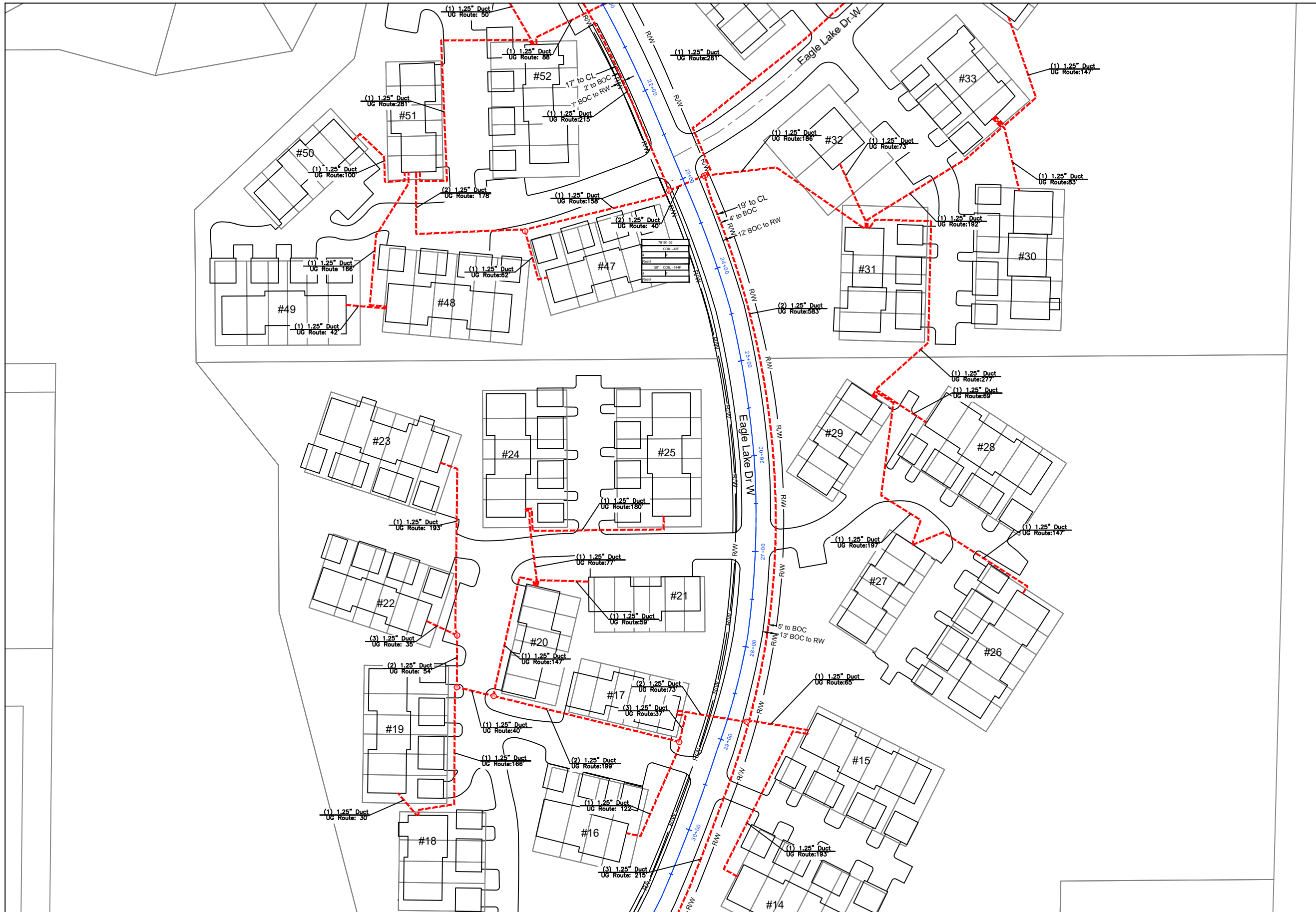
**GSOC**  
 GOPHER STATE ONE CALL  
 1-800-252-1116  
 www.gopherstateonecall.org

Prepared by:

**compass**  
 consultants inc.  
 Perham, MN 218-346-3600  
 TrustCompass.com

78191-02

See Sheet 78191-02



See Sheet 78191-04



1" = 100'

Route	-
City	Maple Grove, MN
County	Hennepin
Filename	AMW Eagle Lake Townhomes
Work Order #	78191

**arvig**

160 2nd St SW  
Perham, MN 56573  
(218) 346-5500

TRACKING	
Staked By:	Brian Adams 8/18/20
Drafted By:	TJR 8/26/20
Project Manager	Kelly Bard
As-Built By:	-
Revision	Rev #1 -

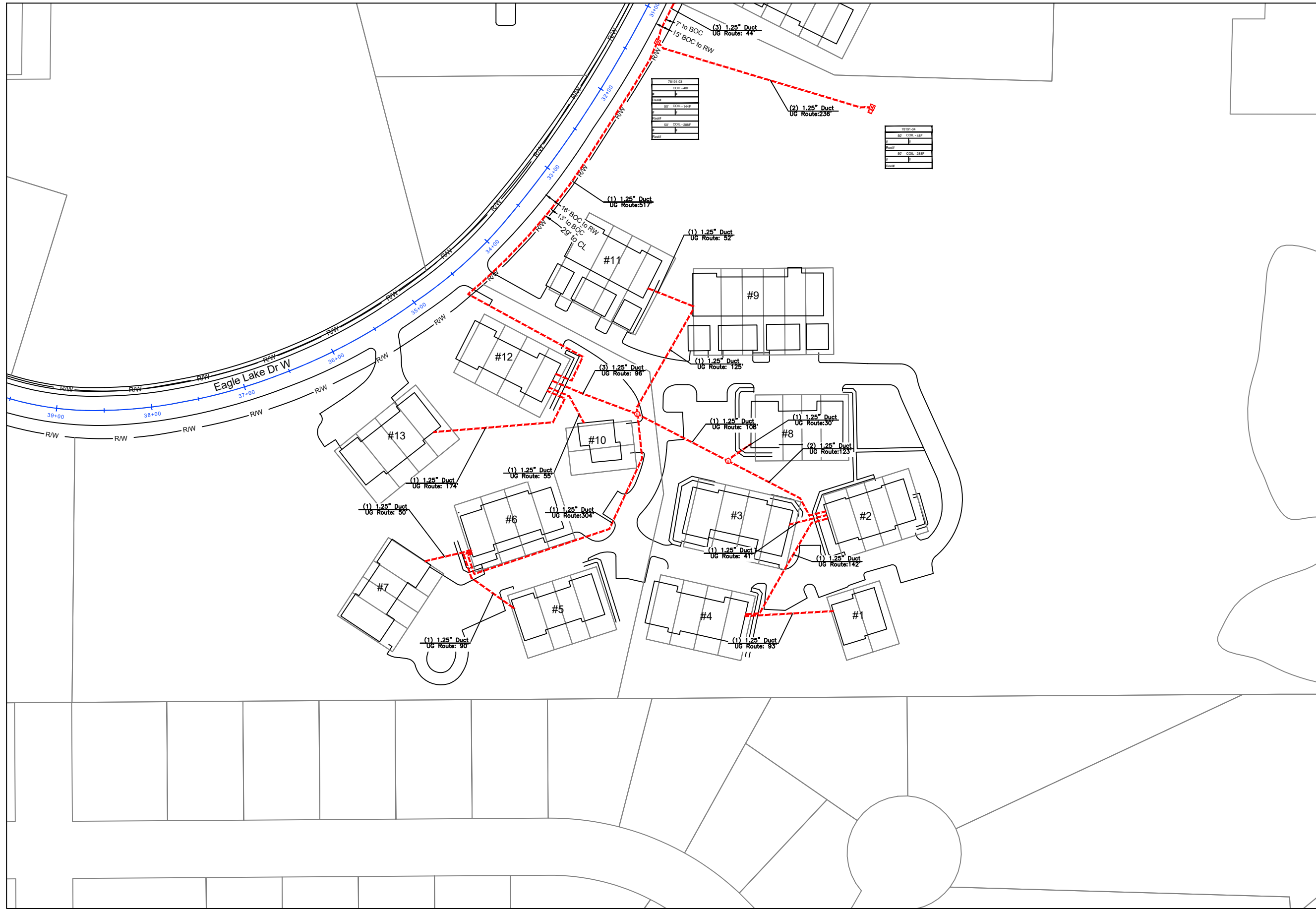
**GSOC**  
GOPHER STATE ONE CALL  
1-800-252-1116  
www.gopherstateonecall.org

Prepared by:

**compass**  
consultants inc.  
Perham, MN 218-346-3600  
TrustCompass.com

78191-03

See Sheet 78191-03



1" = 100'

Route	-
City	Maple Grove, MN
County	Hennepin
Filename	AMW Eagle Lake Townhomes
Work Order #	78191

**arvig**

160 2nd St SW  
Perham, MN 56573  
(218) 346-5500

TRACKING	
Staked By:	Brian Adams 8/18/20
Drafted By:	TJR 8/26/20
Project Manager	Kelly Bard
As-Built By:	-
Revision	Rev #1 -

**GSOC**  
GOPHER STATE ONE CALL  
1-800-252-1116  
www.gopherstateonecall.org

Prepared by:

**compass**  
consultants inc.  
Perham, MN 218-346-3600  
TrustCompass.com

78191-04