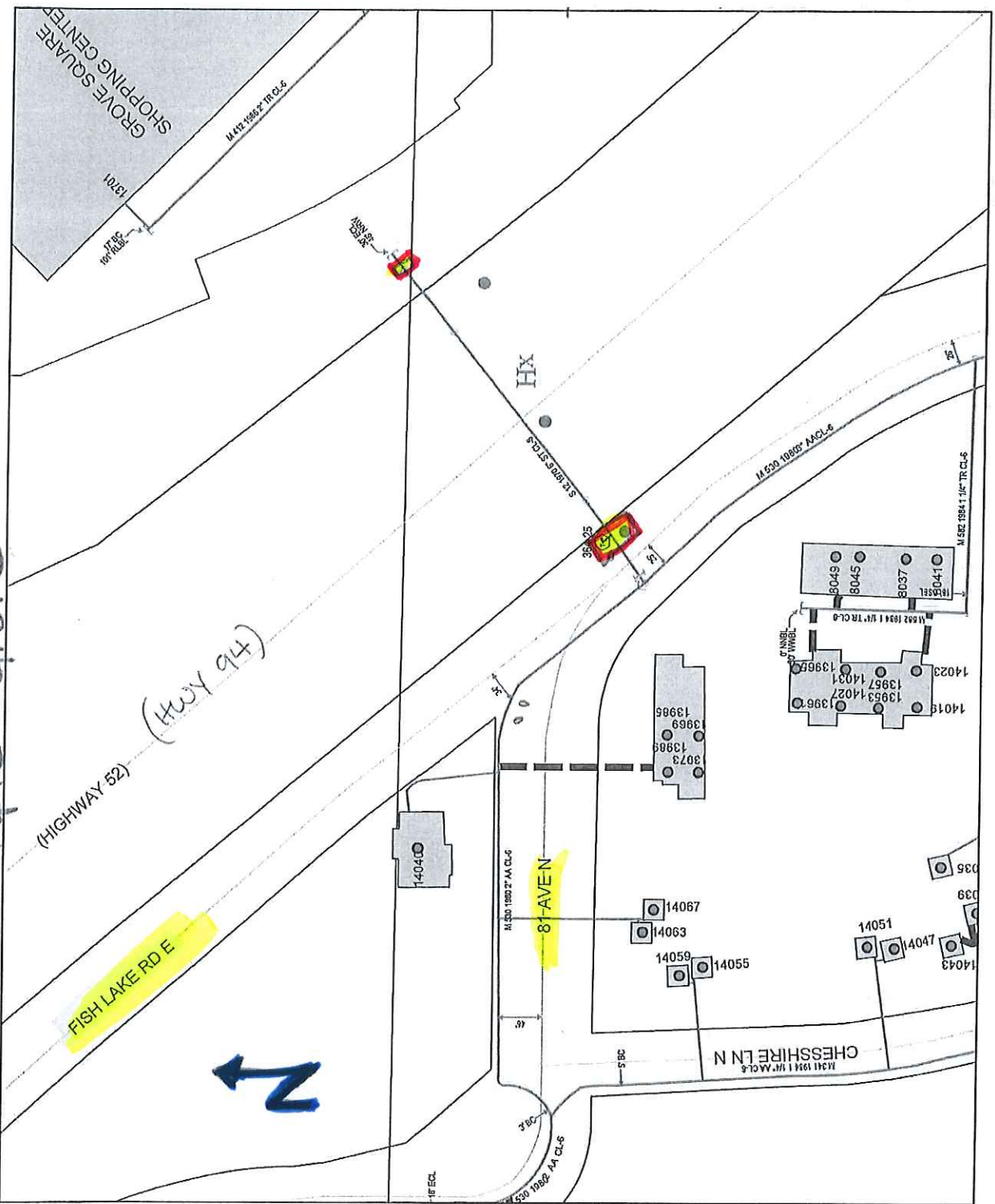


Maple Grove

(HIGHWAY 52)  
(HWY 94)

FISH LAKE RD E



UTION ONLY.  
TO LOCATE FOR EXCAVATION.  
2-1166 FOR ONSITE LOCATIONS AND STAKING.



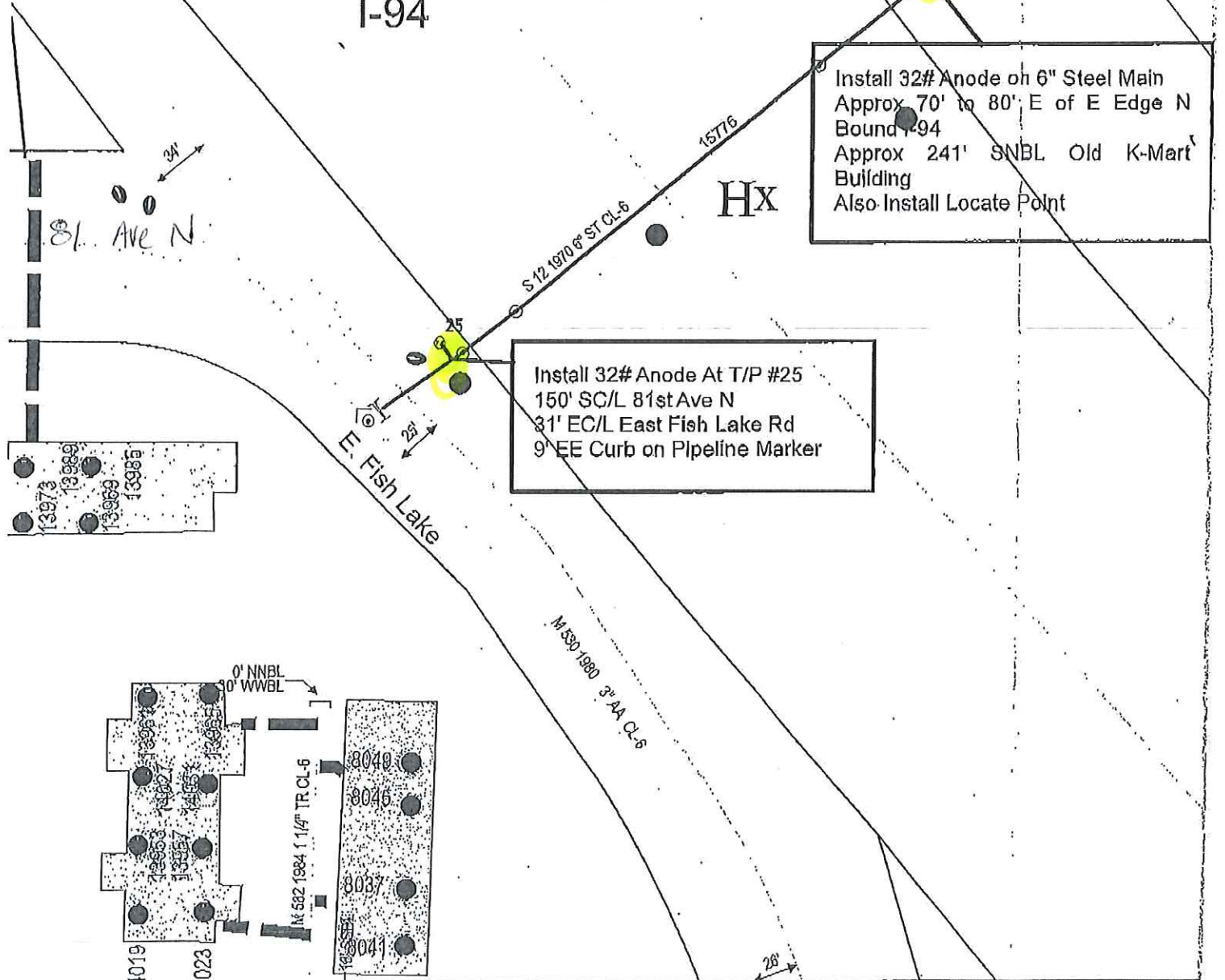
77278444

Sorry Best Measurements I Could Find For N Side

I-94

Install 32# Anode on 6" Steel Main  
Approx 70' to 80' E of E Edge N  
Bound I-94  
Approx 241' SNBL Old K-Mart  
Building  
Also Install Locate Point

Install 32# Anode At T/P #25  
150' SC/L 81st Ave N  
31' EC/L East Fish Lake Rd  
9' EE Curb on Pipeline Marker



#: \_\_\_\_\_  
): 2/23/2016

City: Maple Grove  
Quad/Sec/Twp/Rng: SW 1/4, Sec 22, T119/R22

CP