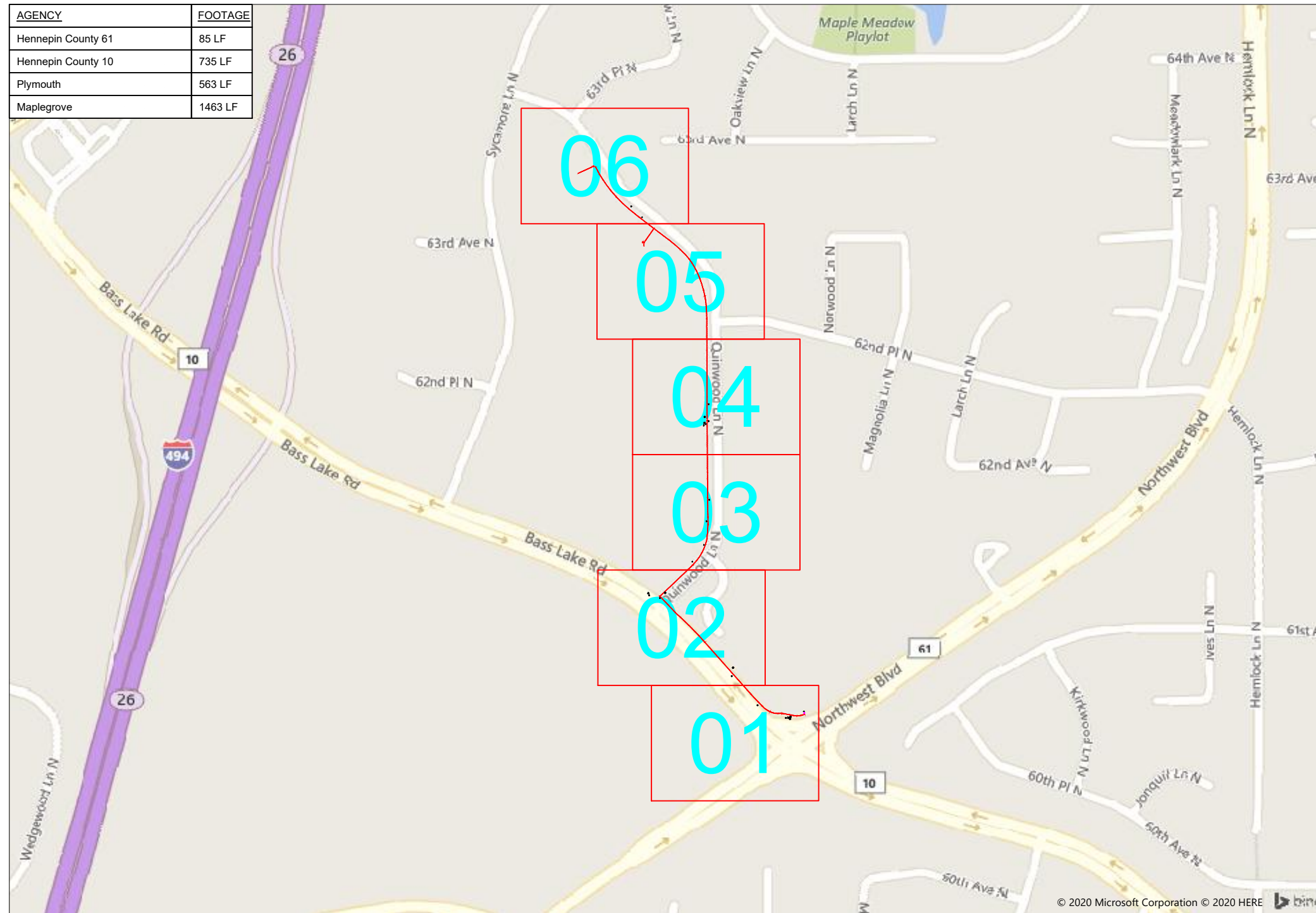


AMW Basswood Trails Apartments

AGENCY	FOOTAGE
Hennepin County 61	85 LF
Hennepin County 10	735 LF
Plymouth	563 LF
Maple Grove	1463 LF



6400 N Sycamore Ln - Maple Grove, MN



1" = -

Route	AMW Basswood Trails
City	Maple Grove/Plymouth
County	Hennepin
Filename	AMW Basswood Trails Apts
Work Order #	77629

arvig

160 2nd St SW
 Perham, MN 56573
 (218) 346-5500

TRACKING	
Slaked By:	
BA	7/17/20
Drafted By:	
MRT	7/24/20
Project Manager	Kelly Bard
As-Built By:	-
Revision	
Rev #1	-

Construction Totals	
Route Footage	2996
Total Underground	2996
Total Aerial	0
Underground (New)	2996
Aerial (New)	0
Overpull (Ex Duct)	0
Overlash (Ex Strand)	0
Plow	0
Bore	2996
New Vaults	5
New Peds	0

GSOC
 GOPHER STATE ONE CALL
 1-800-252-1116
 www.gopherstateonecall.org

Prepared by:

compass
 consultants inc.
 Perham, MN 218-346-3600
 TrustCompass.com

Overview

Legend

Fiber Linetypes

	Proposed Underground Fiber - Bore
	Proposed Underground Fiber - Plow
	Proposed UG Fiber in Existing Duct
	Existing Underground Fiber
	Proposed Aerial Fiber
	Proposed Aerial Overlash
	Existing Aerial Fiber
	Proposed Aerial Strand
	Existing Aerial Strand

Other Linetypes

	Rail Road
	Fence
	Retaining Wall
	Storm Sewer
	Sanitary Sewer
	Gas Line
	Tele./Comm. Line
	Water Line
	Electric Line
	Street light/Traffic signal
	District Cooling
	District Heating
	Force Main
	Other Utility or Unknown
	Utility Easement

Abbreviations

- CL - Center Line
- R/W - Right of Way
- BOC - Back of Curb
- FC - Front of Curb
- EOR - Edge of Road
- S/W - Sidewalk
- HH - Handhole
- MH - Manhole
- PRT - Preterminated Cable
- PRG - Pigtail Cable

Symbols

	Proposed Handhole
	Existing Handhole
	Refrence Handhole
	Manhole
	Proposed Cabinet
	Existing Cabinet
	Bore Pit
	Proposed Splice Point
	Existing Splice Point
	Power Pole
	Proposed Slack Coil
	Existing Slack Coil
	Proposed Anchor/Down Guy
	Existing Anchor/Down Guy
	Proposed Riser
	Existing Riser
	Aerial Bond
	Aerial Ground
	BM53T - Fiber Marker
	BM53 - Fiber Marker
	Proposed PED
	Existing PED
	Proposed Splice Case
	Existing Splice Case
	Street Light
	Traffic Light
	Traffic Light
	Transformer
	Hydrant
	Catch Basin
	Tree

Construction Totals

Route Footage	2996
Total Underground	2996
Total Aerial	0
Underground (New)	2996
Aerial (New)	0
Overpull (Ex Duct)	0
Overlash (Ex Strand)	0
Plow	0
Bore	2996
New Vaults	5
New Peds	0

Fiber

TBD	0
12F Fiber	0
24F Fiber	0
36F Fiber	0
48F Fiber	2780
72F Fiber	0
96F Fiber	0
144F Fiber	966
288F Fiber	0
12-DE Fiber	0
24-DE Fiber	0
36-DE Fiber	0
48-DE Fiber	0
60-DE Fiber	0
72-DE Fiber	0
96-DE Fiber	0
144-DE Fiber	0
288-DE Fiber	0

Materials

Duct (1.25")	5838
Vault (Small)	0
Vault (Medium)	2
Vault (Large)	3
PED BD5	0
Warning Sign	0
Locate Terminal	5
Ground Rod	5
Strand	0



1" = -

Route	AMW Basswood Trails
City	Maple Grove/Plymouth
County	Hennepin
Filename	AMW Basswood Trails Apts
Work Order #	77629

160 2nd St SW
Perham, MN 56573
(218) 346-5500

TRACKING

Staked By:	BA	7/17/20
Drafted By:	MRT	7/24/20
Project Manager	Kelly Bard	
As-Built By:	-	
Revision	Rev #1 -	

GOPHER STATE ONE CALL
1-800-252-1116
www.gopherstateonecall.org

Prepared by:

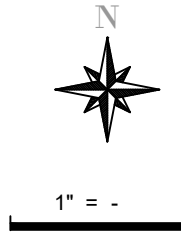
Perham, MN 218-346-3600
TrustCompass.com

Legend

Existing Access Points



Existing Vault



Route
AMW Basswood Trails
City
Maple Grove/Plymouth
County
Hennepin
Filename
AMW Basswood Trails Apts
Work Order #
77629

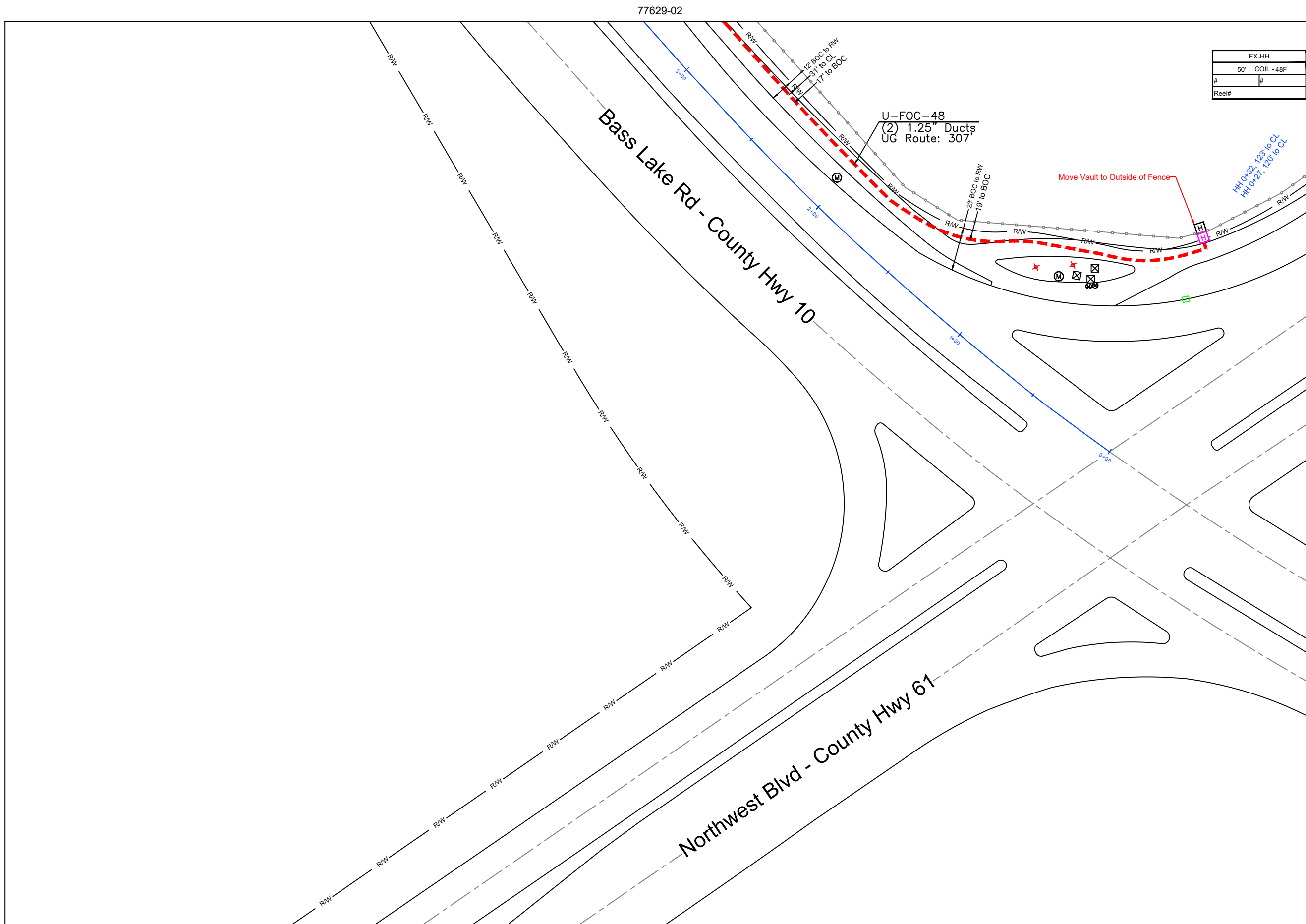
arvig
160 2nd St SW
Perham, MN 56573
(218) 346-5500

TRACKING	
Staked By:	
BA	7/17/20
Drafted By:	
MRT	7/24/20
Project Manager	Kelly Bard
As-Built By:	-
Revision	
Rev #1	-

GSOC
GOPHER STATE ONE CALL
1-800-252-1116
www.gopherstateonecall.org

Prepared by:
 compass
consultants inc.
Perham, MN 218-346-3600
TrustCompass.com

Existing AP



Route	AMW Basswood Trails
City	Maple Grove/Plymouth
County	Hennepin
Filename	AMW Basswood Trails Apts
Work Order #	77629

arvig

160 2nd St SW
 Perham, MN 56573
 (218) 346-5500

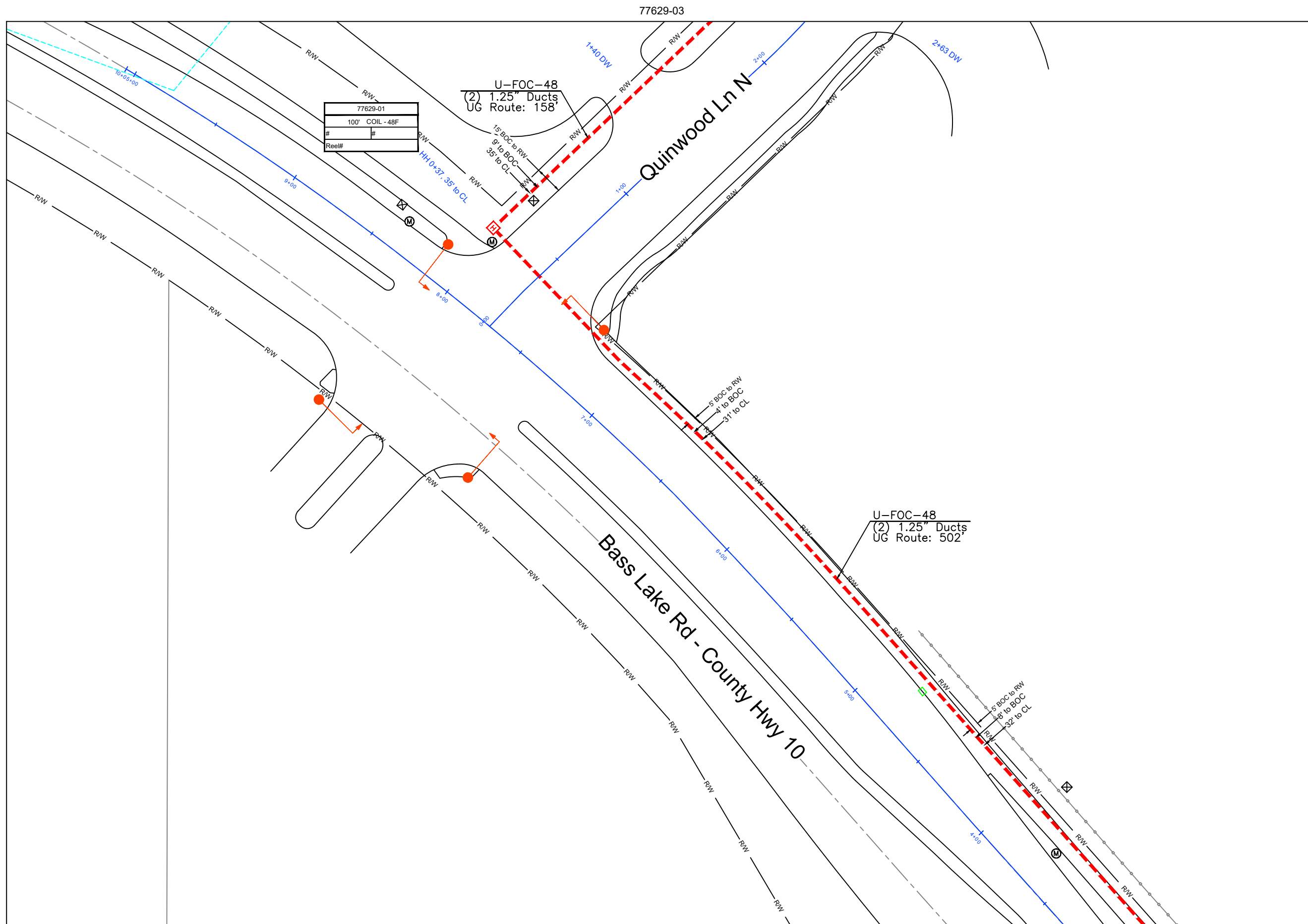
TRACKING	
Slaked By:	
BA	7/17/20
Drafted By:	
MRT	7/24/20
Project Manager	Kelly Bard
As-Built By:	-
Revision	
Rev #1	-

GSOC
 GOPHER STATE ONE CALL
 1-800-252-1116
 www.gopherstateonecall.org

Prepared by:

compass
 consultants inc.
 Perham, MN 218-346-3600
 TrustCompass.com

77629-01



77629-03

77629-01



1" = 50'

Route	AMW Basswood Trails
City	Maple Grove/Plymouth
County	Hennepin
Filename	AMW Basswood Trails Apts
Work Order #	77629



160 2nd St SW
Perham, MN 56573
(218) 346-5500

TRACKING

Slaked By:	BA	7/17/20
Drafted By:	MRT	7/24/20
Project Manager	Kelly Bard	
As-Built By:	-	-
Revision	Rev #1 -	

GSOC

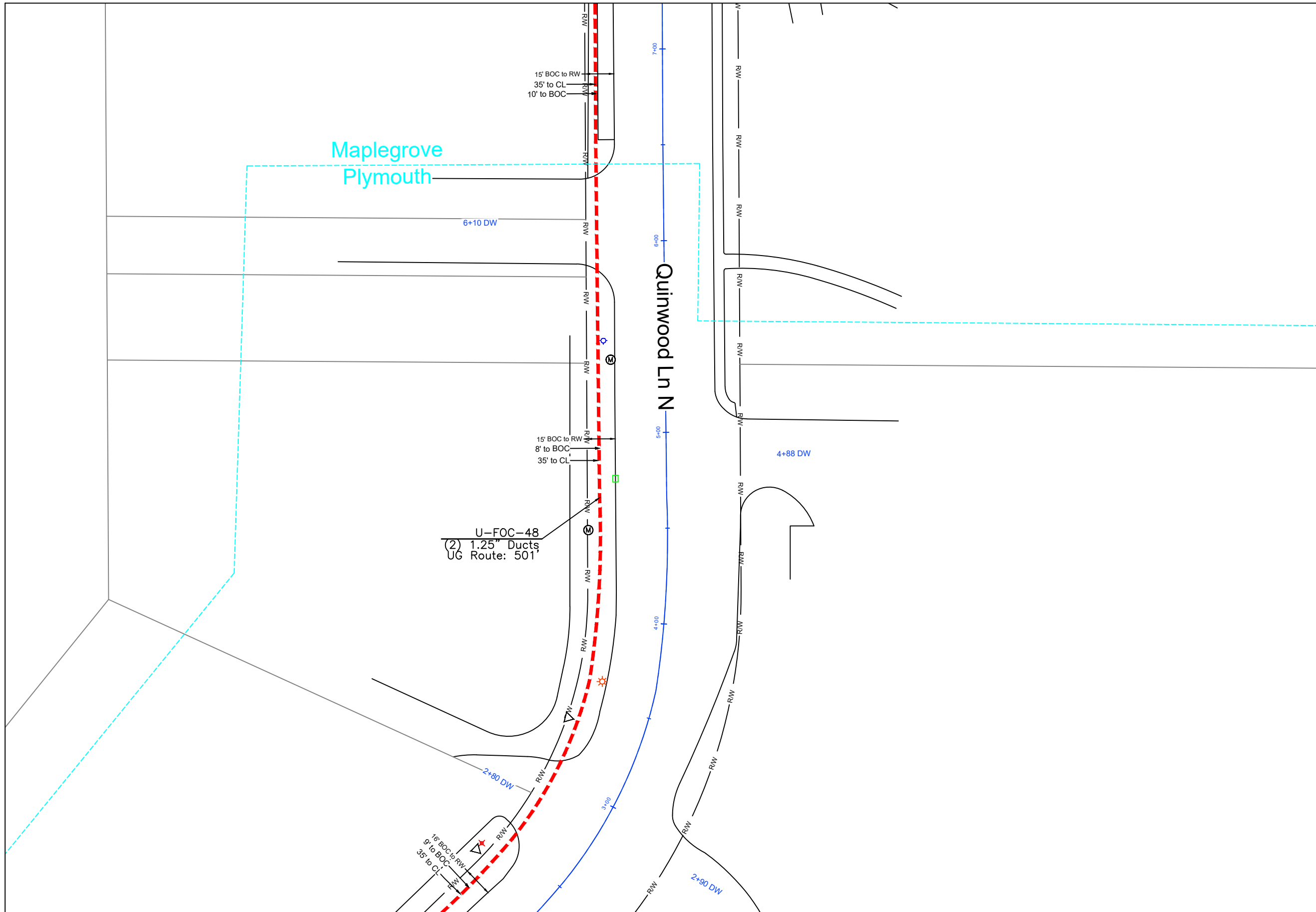
GOPHER STATE ONE CALL
1-800-252-1116
www.gopherstateonecall.org



77629-02

77629-04

77629-02



1" = 50'

Route
AMW Basswood Trails

City
Maple Grove/Plymouth

County
Hennepin

Filename
AMW Basswood Trails Apts

Work Order #
77629



160 2nd St SW
Perham, MN 56573
(218) 346-5500

TRACKING

Staked By:	BA	7/17/20
Drafted By:	MRT	7/24/20
Project Manager	Kelly Bard	
As-Built By:	-	-
Revision	Rev #1 -	

GSOC

GOPHER STATE ONE CALL
1-800-252-1116
www.gopherstateonecall.org

Prepared by:



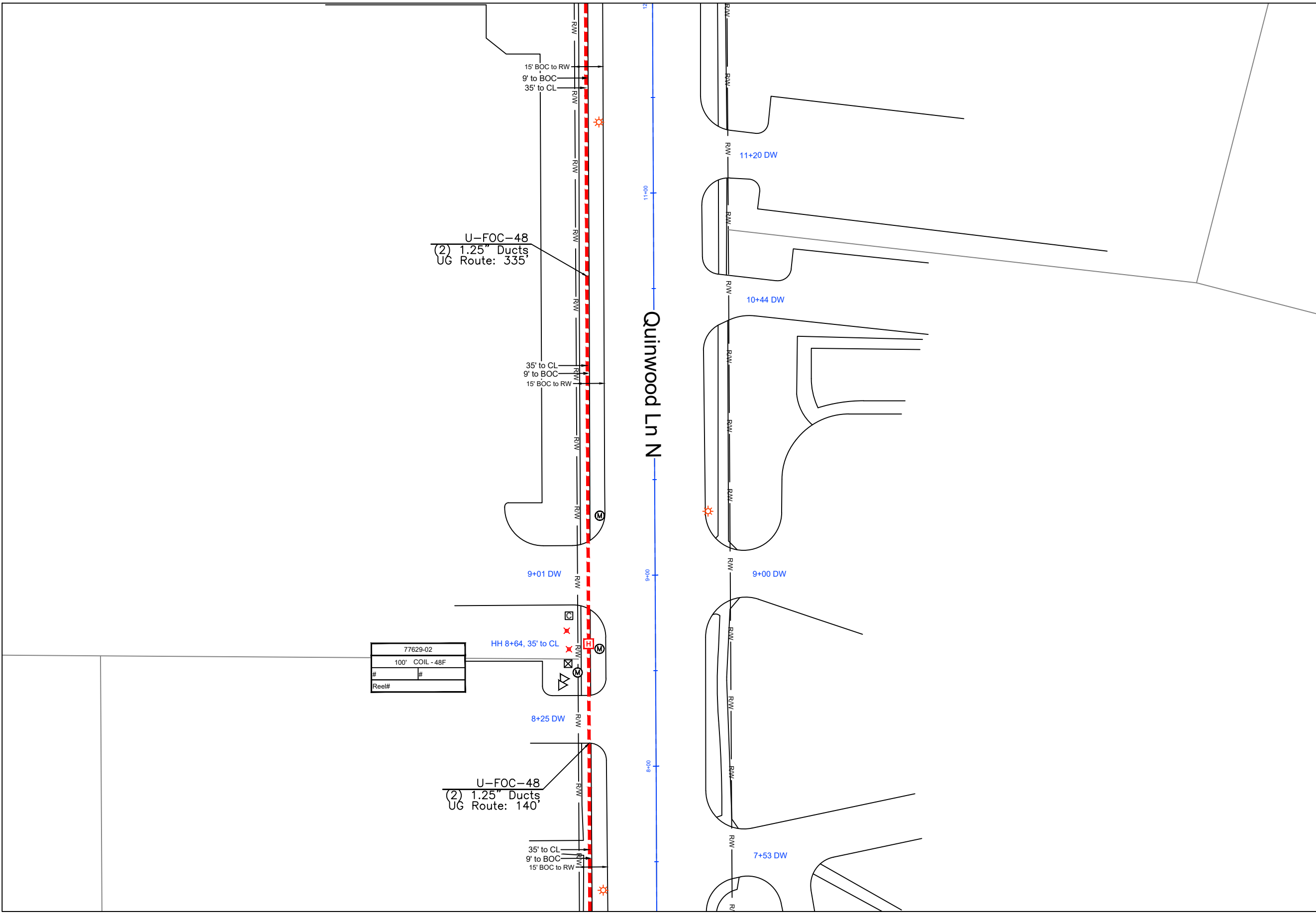
Perham, MN 218-346-3600
TrustCompass.com

77629-03

77629-05

77629-03

Quinwood Ln N



1" = 50'

Route	AMW Basswood Trails
City	Maple Grove/Plymouth
County	Hennepin
Filename	AMW Basswood Trails Apts
Work Order #	77629

arvig

160 2nd St SW
Perham, MN 56573
(218) 346-5500

TRACKING	
Staked By:	BA 7/17/20
Drafted By:	MRT 7/24/20
Project Manager	Kelly Bard
As-Built By:	-
Revision	Rev #1 -

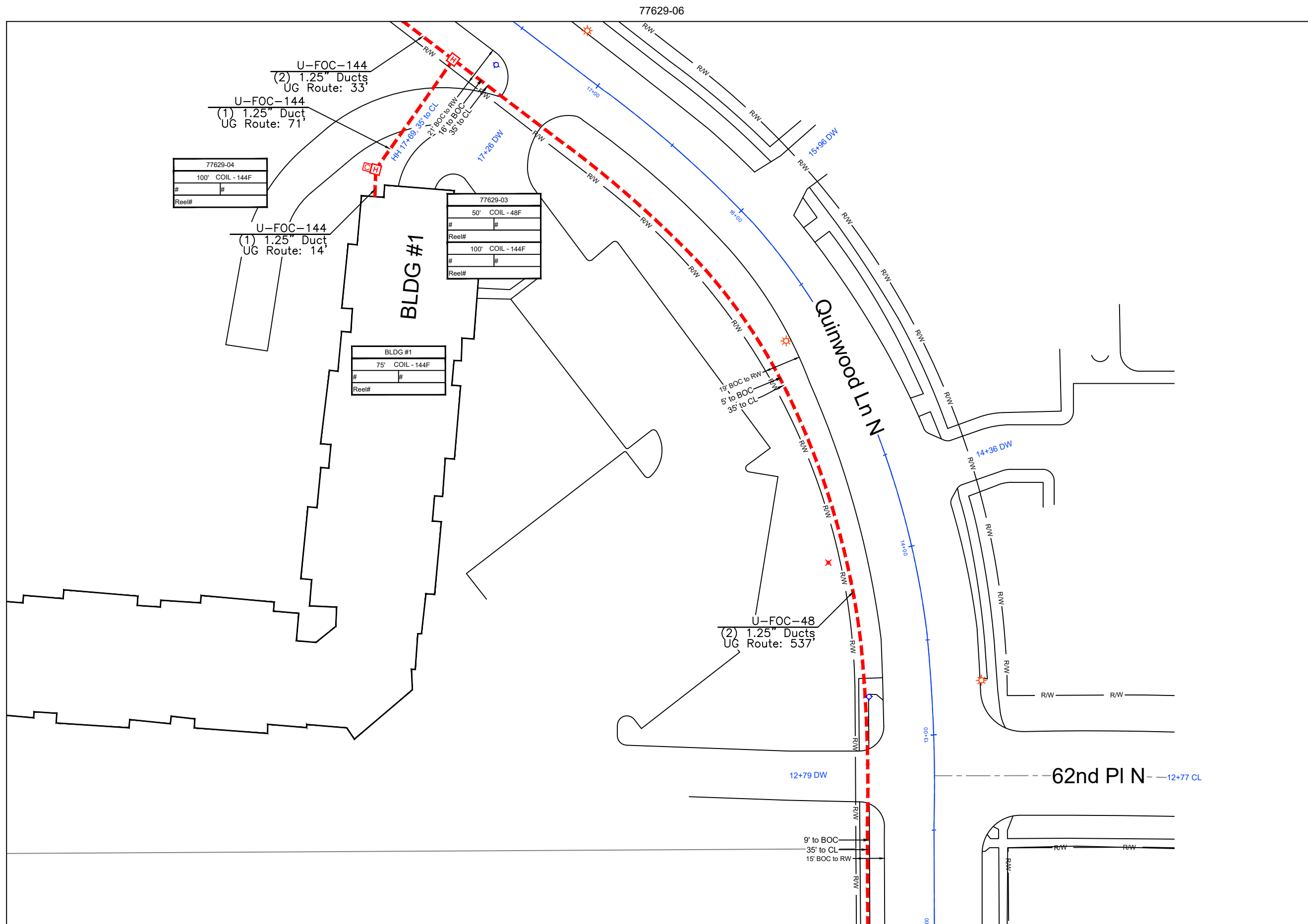
77629-02	
100' COIL - 48F	
#	#
Reel#	

GSOC
GOPHER STATE ONE CALL
1-800-252-1116
www.gopherstateonecall.org

Prepared by:

compass
consultants inc.
Perham, MN 218-346-3600
TrustCompass.com

77629-04



1" = 50'

Route	AMW Basswood Trails
City	Maple Grove/Plymouth
County	Hennepin
Filename	AMW Basswood Trails Apts
Work Order #	77629

arvig

160 2nd St SW
Perham, MN 56573
(218) 346-5500

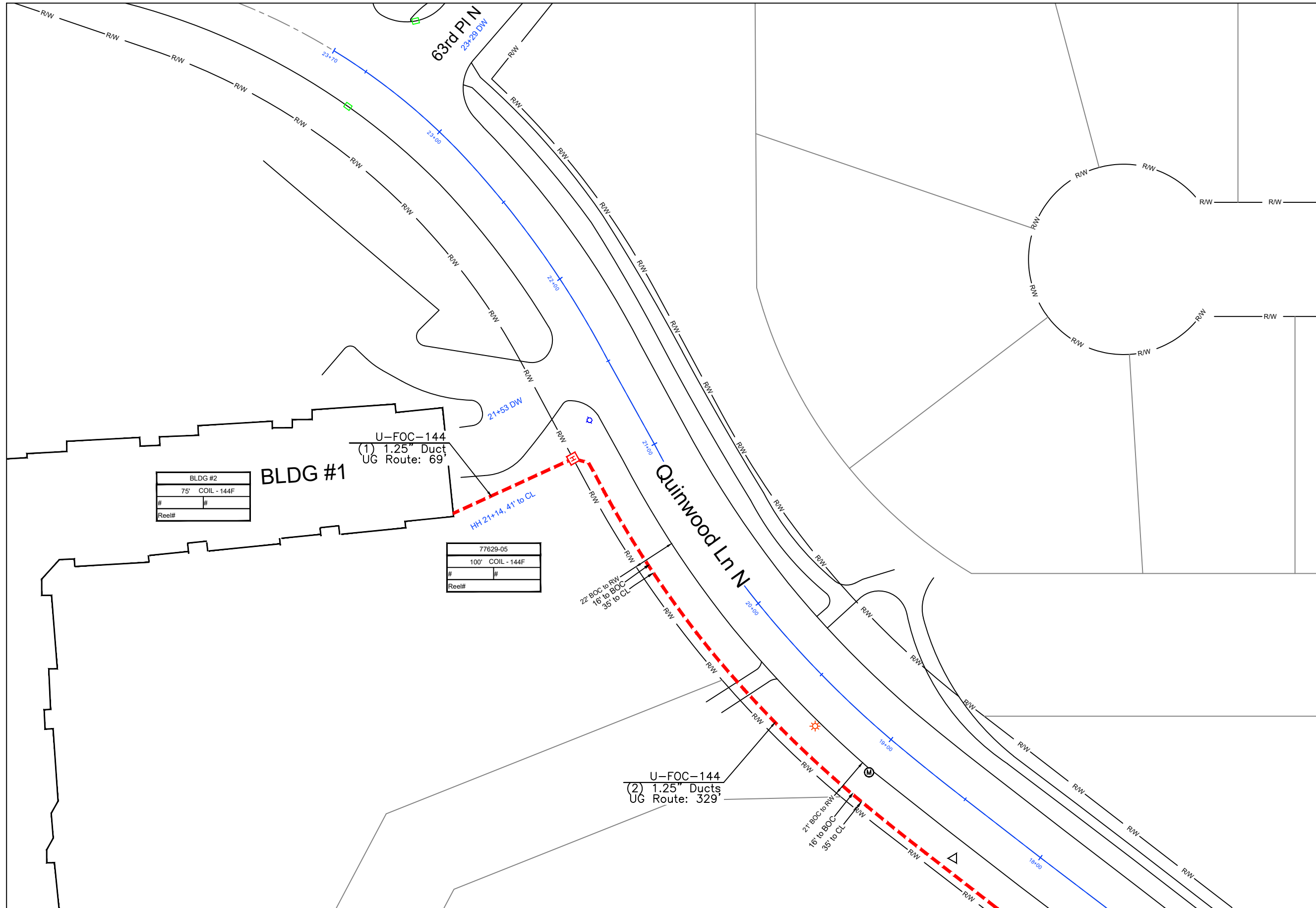
TRACKING	
Staked By:	BA 7/17/20
Drafted By:	MRT 7/24/20
Project Manager	Kelly Bard
As-Built By:	-
Revision	Rev #1 -

GSOC
GOPHER STATE ONE CALL
1-800-252-1116
www.gopherstateonecall.org

Prepared by:

compass
consultants inc.
Perham, MN 218-346-3600
TrustCompass.com

77629-05



77629-05



1" = 50'

Route
AMW Basswood Trails
City
Maple Grove/Plymouth
County
Hennepin
Filename
AMW Basswood Trails Apts
Work Order #
77629

arvig
160 2nd St SW
Perham, MN 56573
(218) 346-5500

TRACKING
Staked By:
BA 7/17/20
Drafted By:
MRT 7/24/20
Project Manager
Kelly Bard
As-Built By:
-
Revision
Rev #1 -

GSOC
GOPHER STATE ONE CALL
1-800-252-1116
www.gopherstateonecall.org

Prepared by:
compass
consultants inc.
Perham, MN 218-346-3600
TrustCompass.com

77629-06