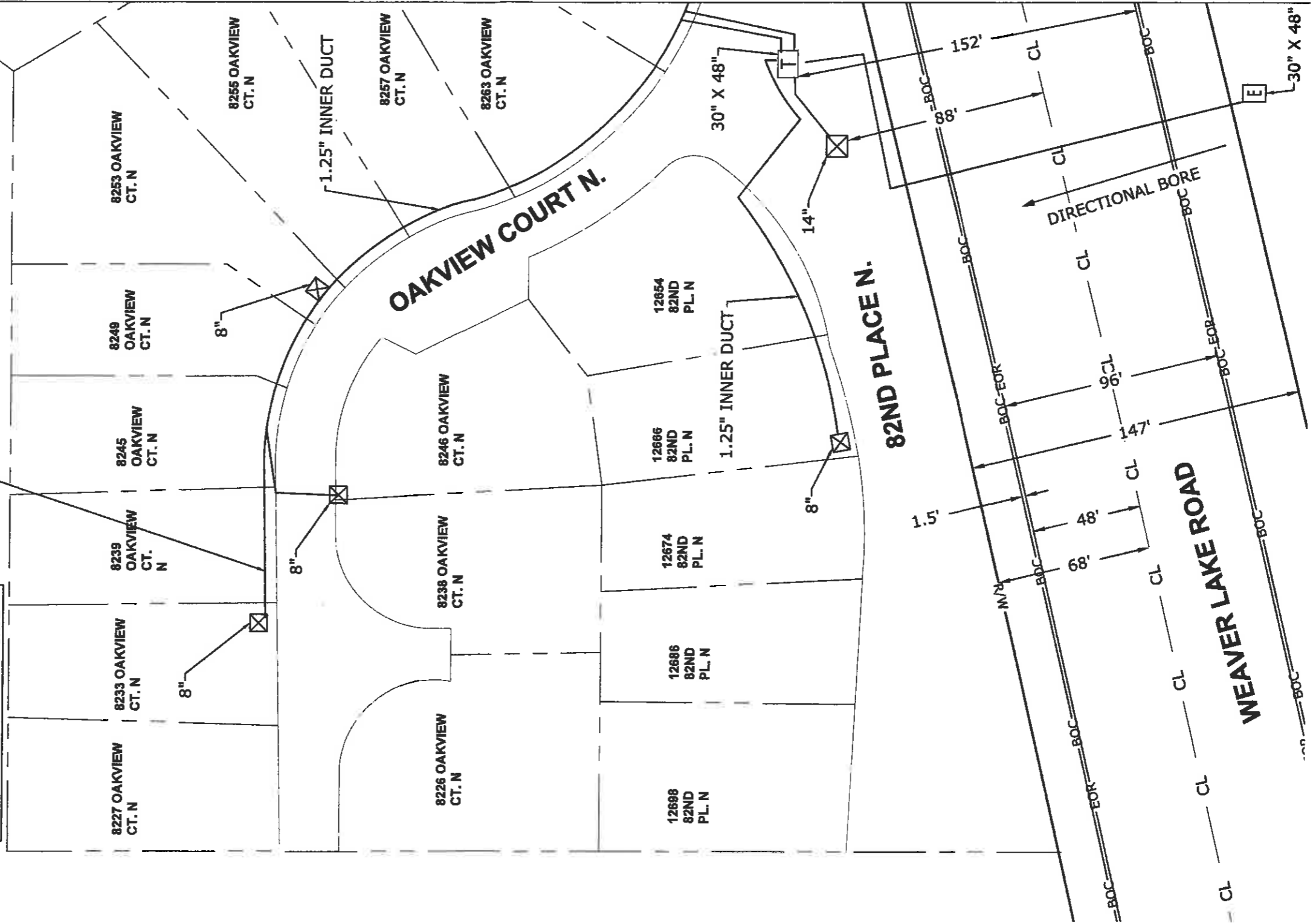
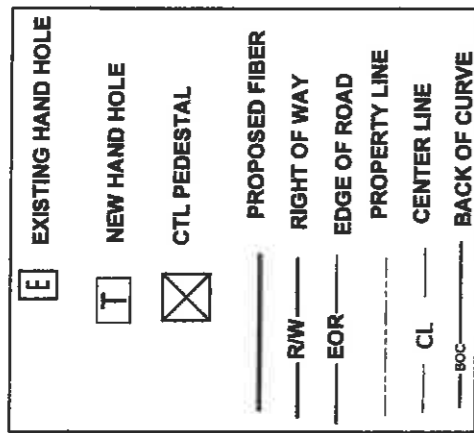




**PERMIT NOTES**  
 THIS JOB WILL PLACE A TOTAL OF 1900 FEET OF CONDUIT AND FIBER OPTIC CABLE. IT WILL ALSO PLACE 8 PEDESTALS AND ONE NEW HAND HOLE.



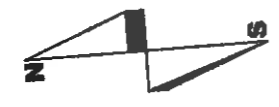
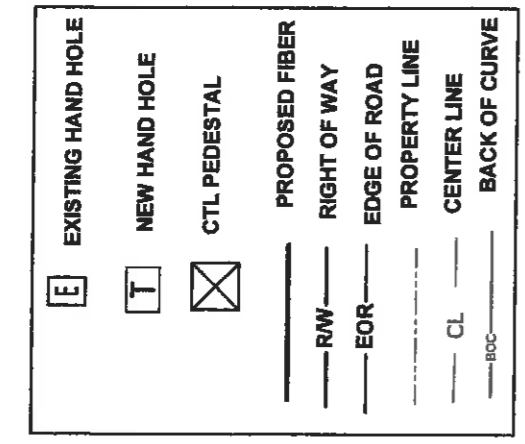
**82ND PLC. N. AND OAKVIEW CT. N**  
 HENNEPIN COUNTY  
 CITY PERMIT - MAPLE GROVE, MN 55369

SCALE: 1"=50'



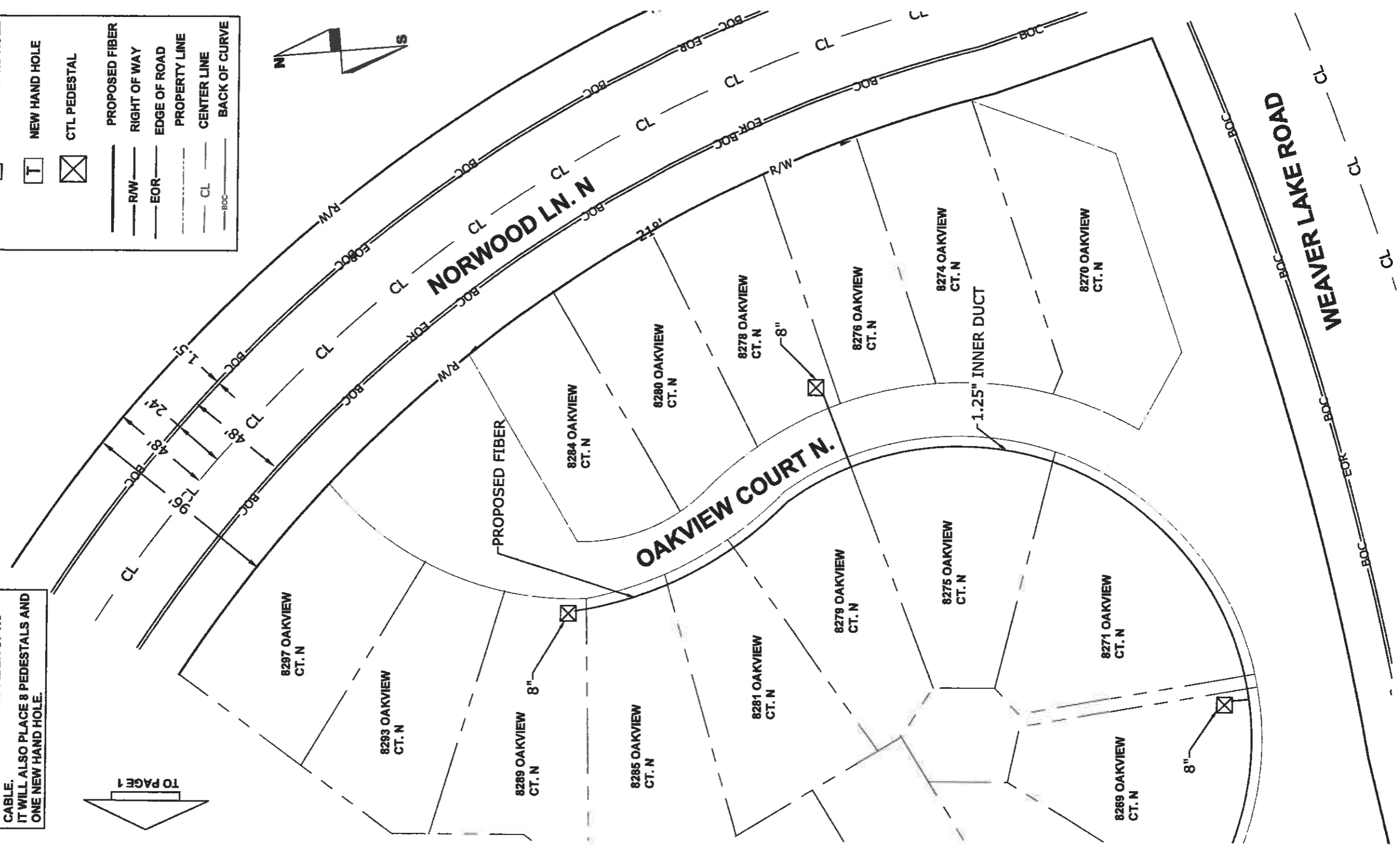
**ENGINEER:** CENTURYLINK  
 JUSTIN FOTH  
**FIELD ENGINEER:** POWER ENGINEERS  
 BERNARD KHAMALA  
**DRAWN BY:** POWER ENGINEERS  
 BERNARD KHAMAALA

**PROJECT:** N.149709  
 1.) LOCATE ALL UTILITIES BEFORE DIGGING.  
 2.) POT HOLE ALL BURIED UTILITY CROSSINGS.  
 3.) RESTORE ALL SURFACES TO ORIGINAL OR BETTER CONDITION.  
 4.) JOINT TRENCH WITH OTHER UTILITIES.  
 5.) JOINT TRENCH WILL BE WITHIN RIGHT OF WAY.  
 SHEET: 01 OF 02 REV:01 DATE:10/21/2016



**PERMIT NOTES**  
 THIS JOB WILL PLACE A TOTAL OF 1900 FEET OF CONDUIT AND FIBER OPTIC CABLE. IT WILL ALSO PLACE 8 PEDESTALS AND ONE NEW HAND HOLE.

TO PAGE 1



**82ND PLC. N. AND OAKVIEW CT. N**  
 HENNEPIN COUNTY  
 CITY PERMIT - MAPLE GROVE, MN 55369  
 SCALE: 1"=50'



ENGINEER: CENTURYLINK JUSTIN FOTH  
 FIELD ENGINEER: POWER ENGINEERS BERNARD KHAMALA  
 DRAWN BY: POWER ENGINEERS BERNARD KHAMAALA

PROJECT: N.149709  
 1.) LOCATE ALL UTILITIES BEFORE DIGGING.  
 2.) POT HOLE ALL BURIED UTILITY CROSSINGS.  
 3.) RESTORE ALL SURFACES TO ORIGINAL OR BETTER CONDITION.  
 4.) JOINT TRENCH WITH OTHER UTILITIES.  
 5.) JOINT TRENCH WILL BE WITHIN RIGHT OF WAY.  
 SHEET: 02 OF 02 REV:01 DATE:10/21/2016