

N.735757
05-05-2020
TELCOM CONSTRUCTION
8001 JEFFERSON HWY
MAPLE GROVE, MN 55369
PAGE 1

CITY OF MAPLE GROVE
HENNEPIN COUNTY

EXISTING MH 8513-8513
SEE SHEET 6
BEGIN PLACEMENT

EXISTING HH 1
SEE SHEET 2
SPlice ONLY

EXISTING HH11700 ECB
SEE SHEET 2
SPlice ONLY

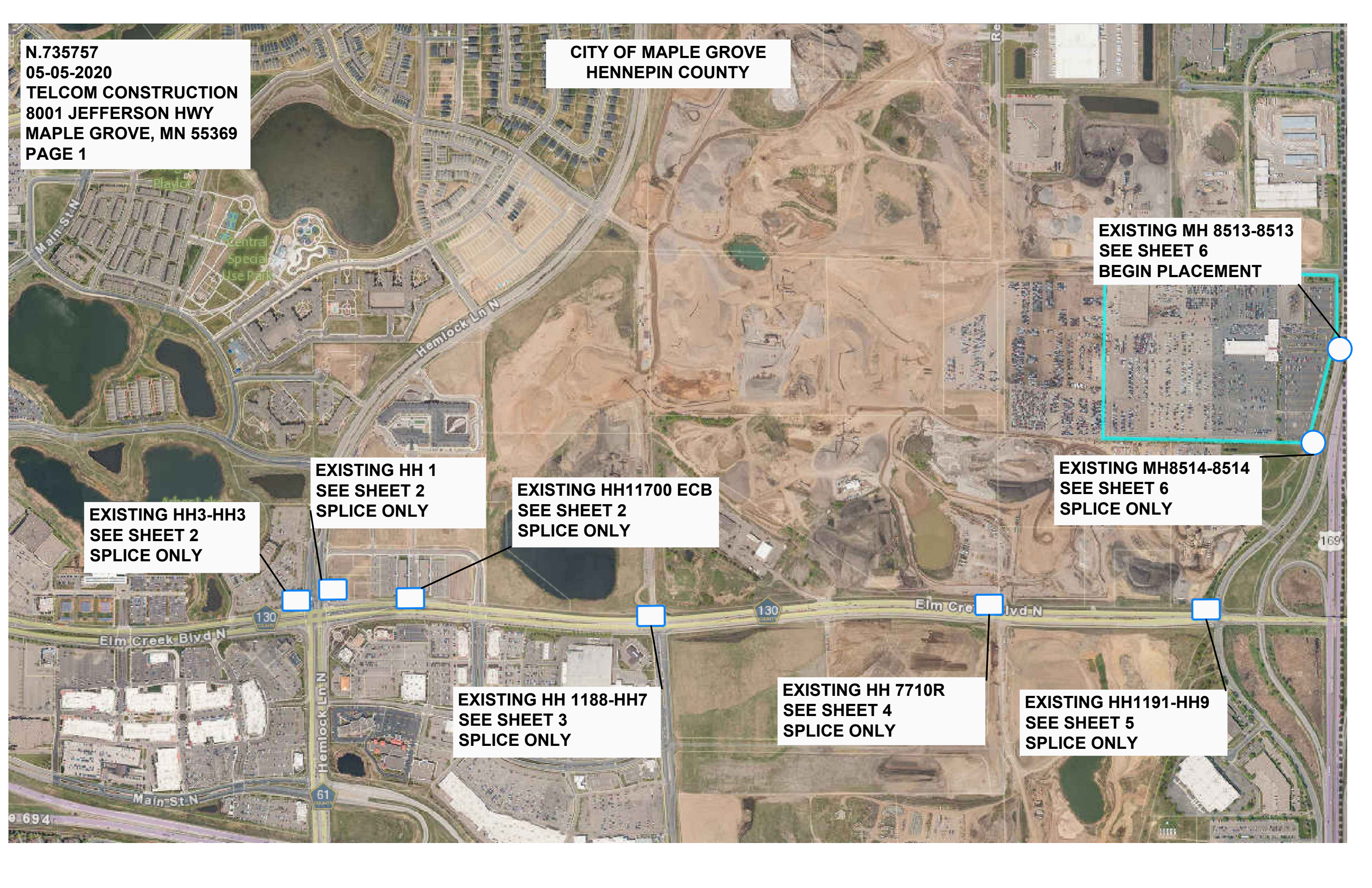
EXISTING MH8514-8514
SEE SHEET 6
SPlice ONLY

EXISTING HH3-HH3
SEE SHEET 2
SPlice ONLY

EXISTING HH 1188-HH7
SEE SHEET 3
SPlice ONLY

EXISTING HH 7710R
SEE SHEET 4
SPlice ONLY

EXISTING HH1191-HH9
SEE SHEET 5
SPlice ONLY



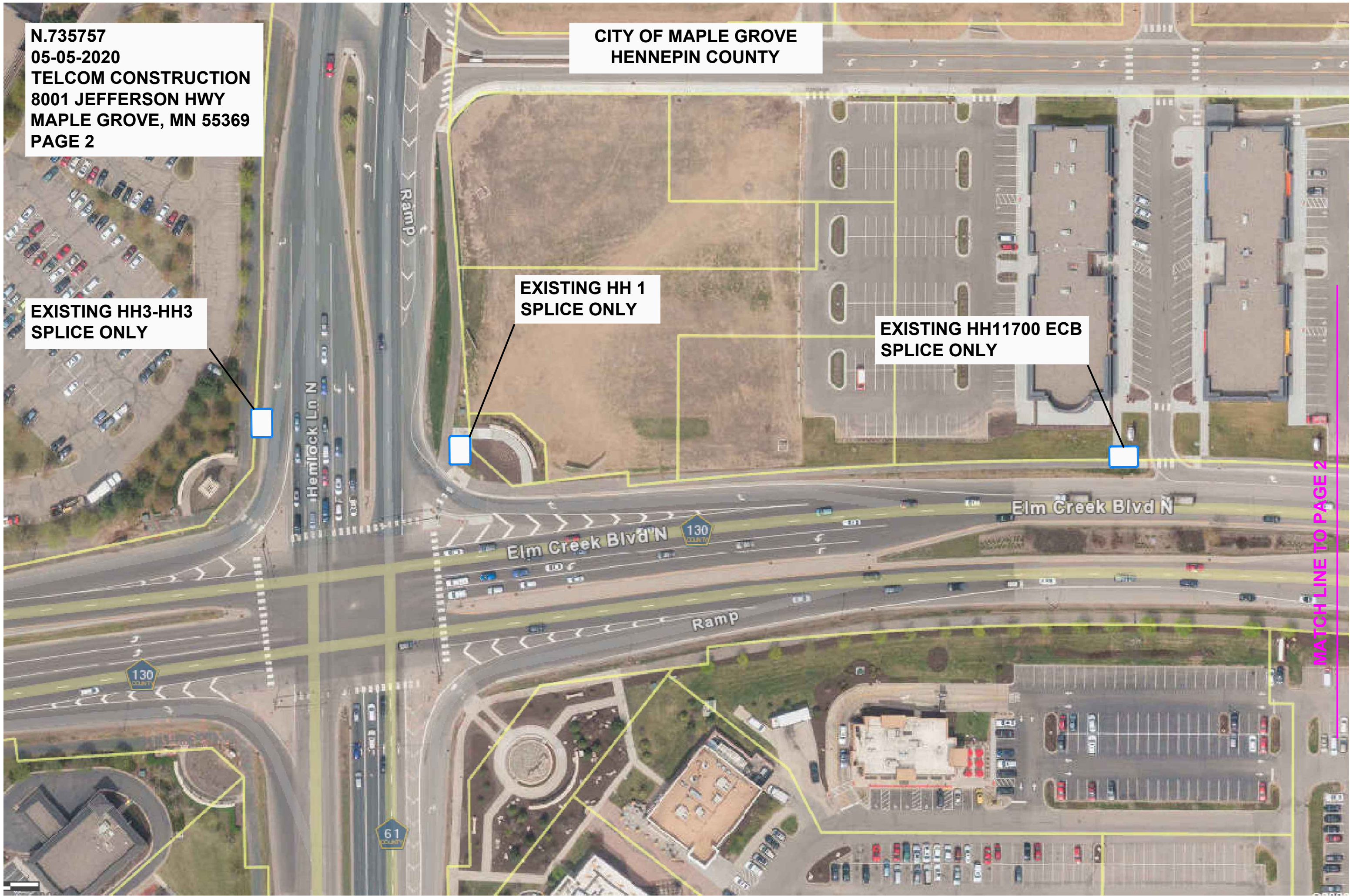
N.735757
05-05-2020
TELCOM CONSTRUCTION
8001 JEFFERSON HWY
MAPLE GROVE, MN 55369
PAGE 2

CITY OF MAPLE GROVE
HENNEPIN COUNTY

EXISTING HH3-HH3
SPlice ONLY

EXISTING HH 1
SPlice ONLY

EXISTING HH11700 ECB
SPlice ONLY



MATCH LINE TO PAGE 2

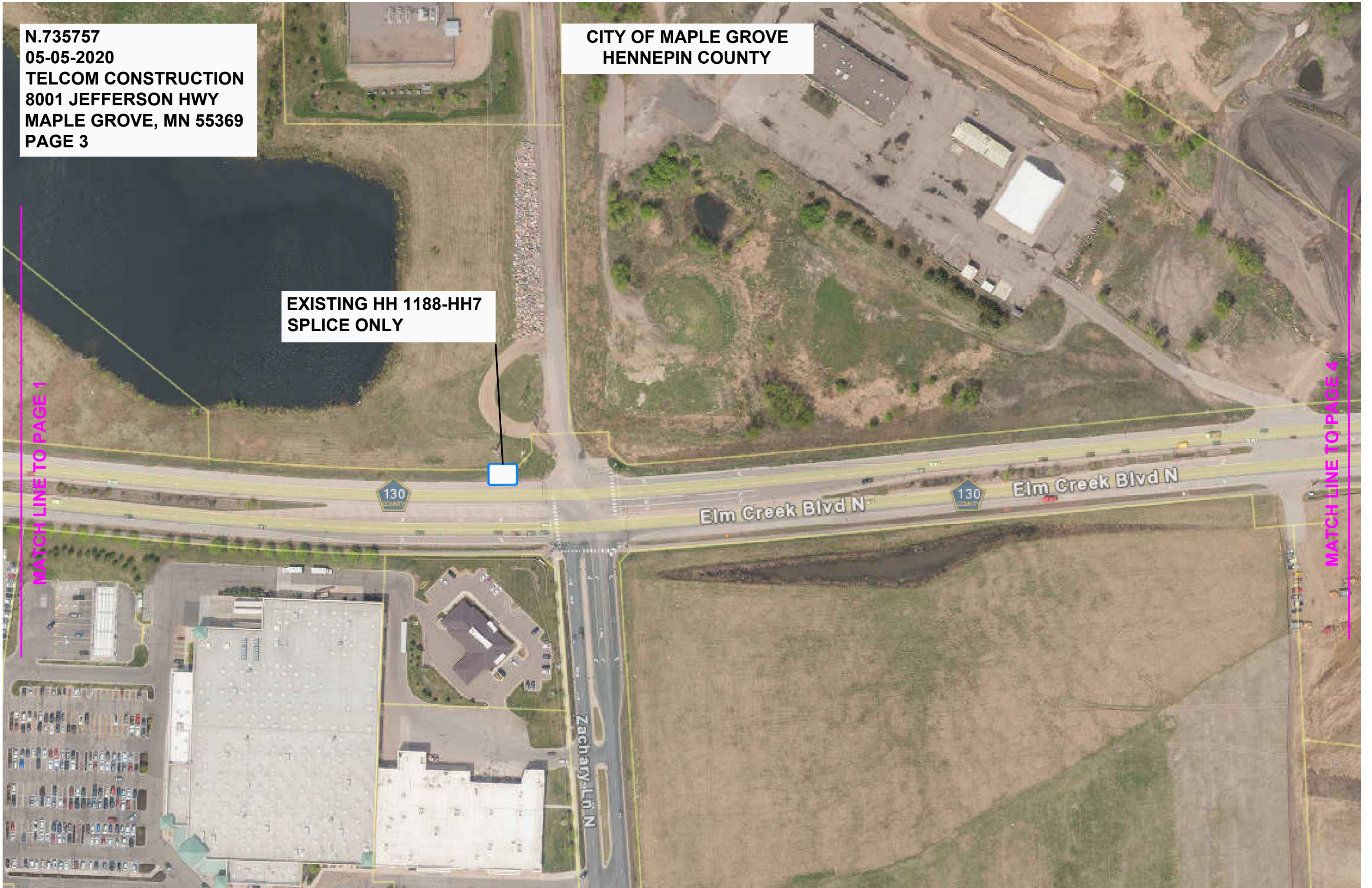
N.735757
05-05-2020
TELCOM CONSTRUCTION
8001 JEFFERSON HWY
MAPLE GROVE, MN 55369
PAGE 3

CITY OF MAPLE GROVE
HENNEPIN COUNTY

EXISTING HH 1188-HH7
SPLICE ONLY

MATCH LINE TO PAGE 1

MATCH LINE TO PAGE 4



N.735757
05-05-2020
TELCOM CONSTRUCTION
8001 JEFFERSON HWY
MAPLE GROVE, MN 55369
PAGE 4

CITY OF MAPLE GROVE
HENNEPIN COUNTY

EXISTING HH 7710R
SPlice ONLY

Maple Grove

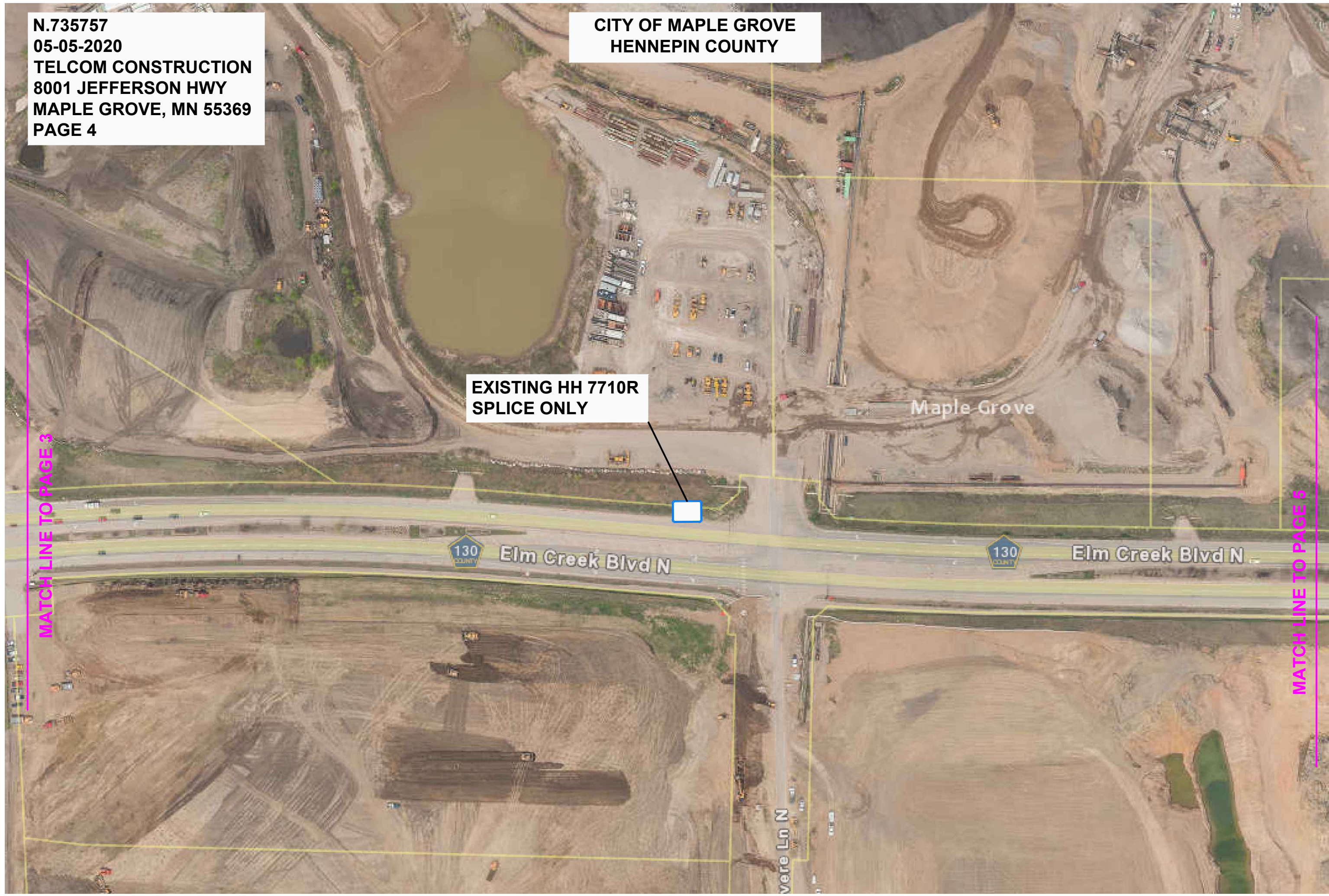
130 COUNTY Elm Creek Blvd N

130 COUNTY Elm Creek Blvd N

vere Ln N

MATCH LINE TO PAGE 3

MATCH LINE TO PAGE 5



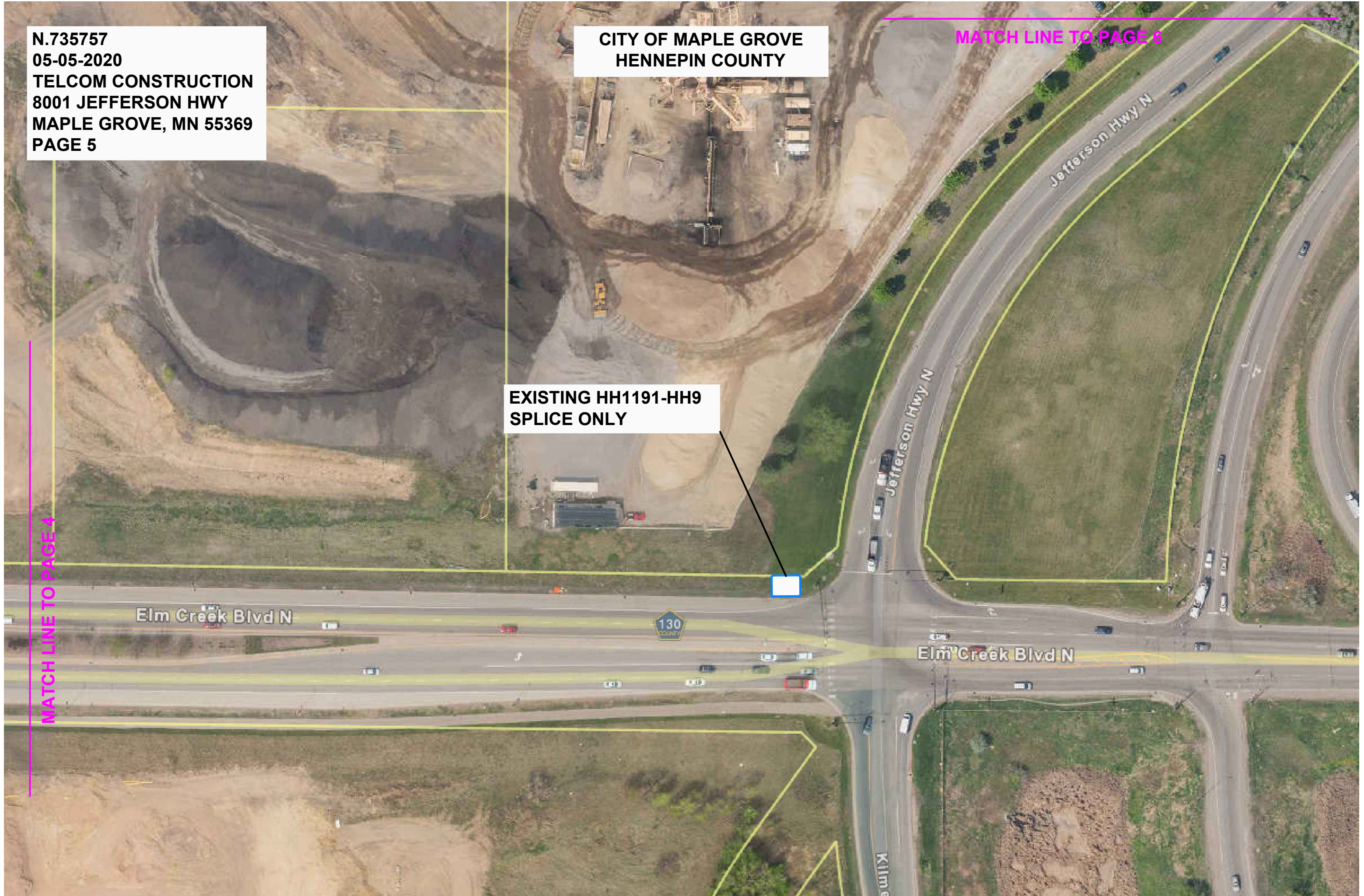
N.735757
05-05-2020
TELCOM CONSTRUCTION
8001 JEFFERSON HWY
MAPLE GROVE, MN 55369
PAGE 5

CITY OF MAPLE GROVE
HENNEPIN COUNTY

MATCH LINE TO PAGE 6

EXISTING HH1191-HH9
SPLICE ONLY

MATCH LINE TO PAGE 4



N.735757
05-05-2020
TELCOM CONSTRUCTION
8001 JEFFERSON HWY
MAPLE GROVE, MN 55369
PAGE 6

CITY OF MAPLE GROVE
HENNEPIN COUNTY

EXISTING MH 8513-8513
BEGIN PLACEMENT

FROM EXISTING MH 8513-8513
BORE AND PLACE 1.25" ID AND 24
FIBER 10' WEST LEAVING ROW TO
SERVE 8001 JEFFERSON HWY

EXISTING MH8514-8514
SPlice ONLY

MATCH LINE TO PAGE 5

