

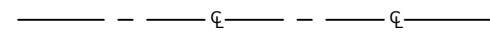
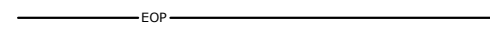
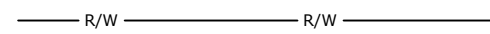


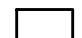
1.) THIS PROJECT PROPOSES THE PLACEMENT OF 2 HANDHOLES, 2 PEDESTALS, THE DIRECTIONAL BORE OF APPROX. 70' OF 1.25" INNERDUCT, THE BORE OF A 1.25" DUCT FROM PROPOSED HANDHOLE TO HANDHOLE AND BORE OF MST FROM HANDHOLE TO PEDESTAL.

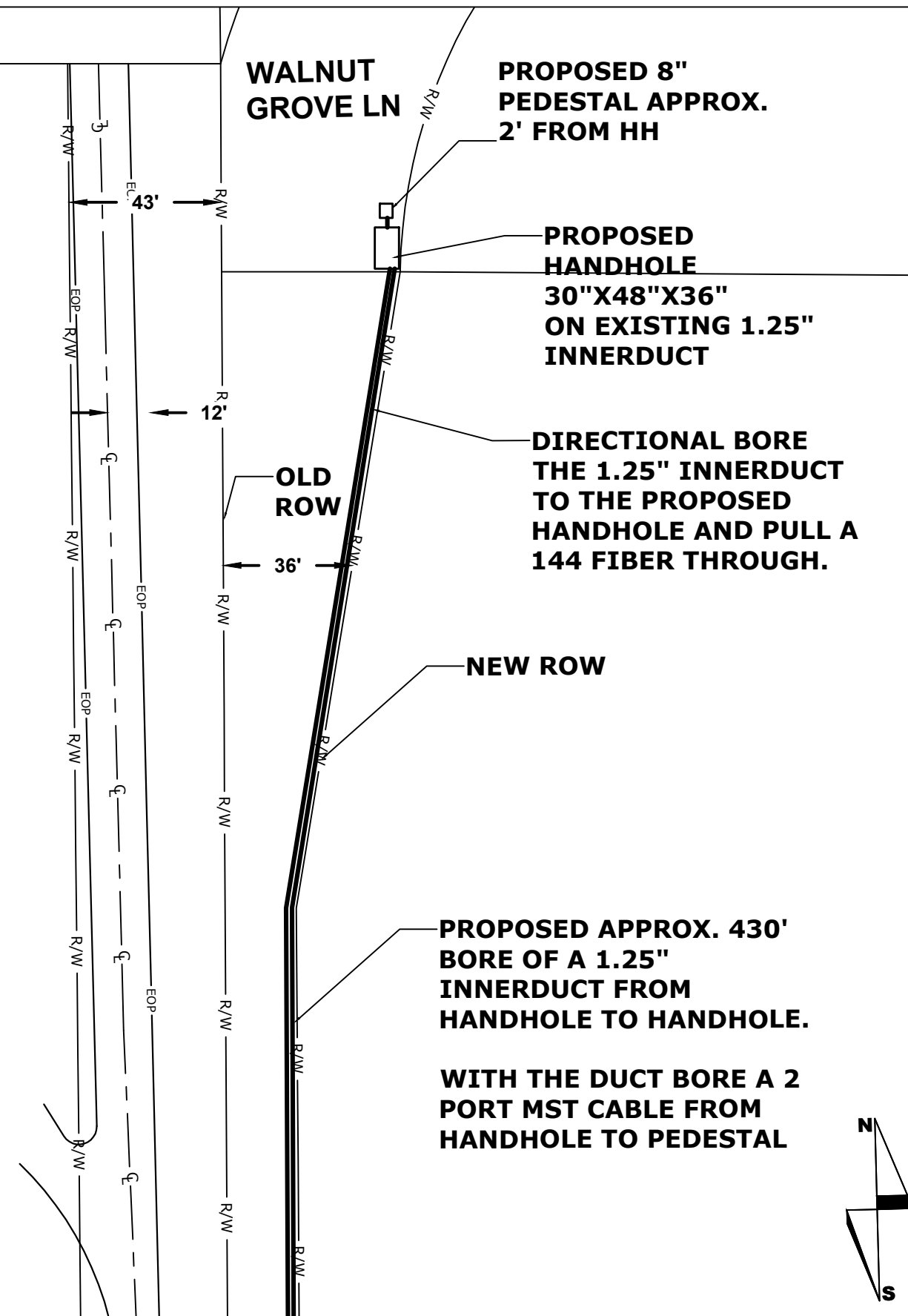
2.) ALL DISTURBED SURFACES WILL BE RESTORED TO AS GOOD AS OR BETTER CONDITION THAN FOUND.

3.) ALL EXISTING UNDERGROUND UTILITIES WILL BE LOCATED PRIOR TO CONSTRUCTION.

4.) ANY CONFLICTING UNDERGROUND UTILITIES WILL BE POTHOLED

5.) 36" MINIMUM COVER WILL BE MAINTAINED.

-  CENTER LINE
-  EDGE OF PAVEMENT
-  RIGHT OF WAY
-  PROPOSED 1.25" CONDUIT
-  PROPOSED PEDESTAL
-  PROPOSED HANDHOLE



18762 Bass Lake Rd
Maple Grove, MN 55311



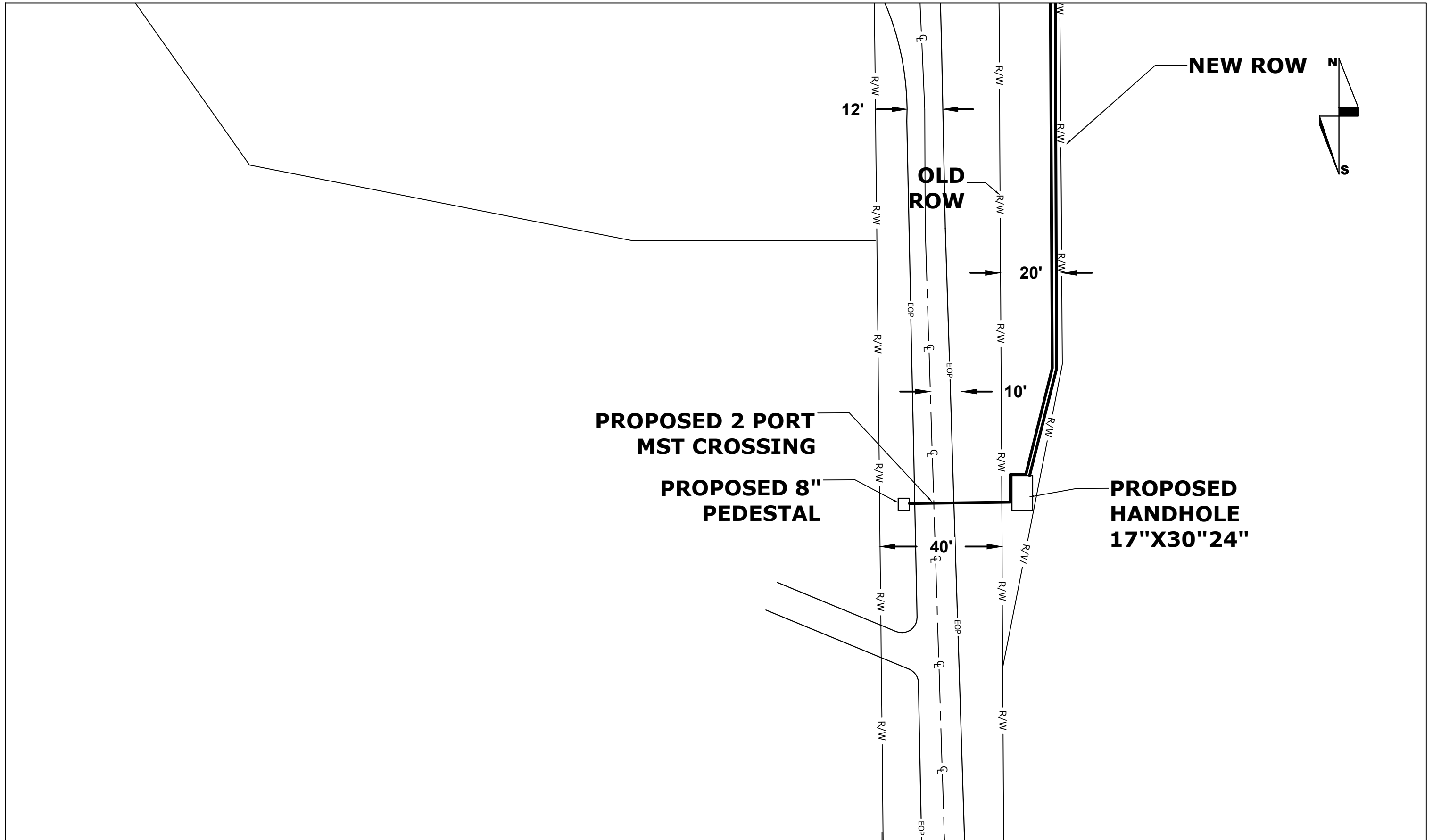
ENGINEER:
SHAWN NIESS
612-431-3516

PROJECT: N.693909

THIS PROJECT PROPOSES THE PLACEMENT OF 2 HANDHOLES, 2 PEDESTALS, A 1.25" DUCT AND AN MST.

DATE: 3/27/2020

1:40



18762 Bass Lake Rd
 Maple Grove, MN 55311



ENGINEER:
 SHAWN NIESS
 612-431-3516

PROJECT: N.693909

THIS PROJECT PROPOSES THE PLACEMENT OF
 2 HANDHOLES, 2 PEDESTALS, A 1.25" DUCT
 AND AN MST.

DATE: 3/27/2020

SCALE: 1:30