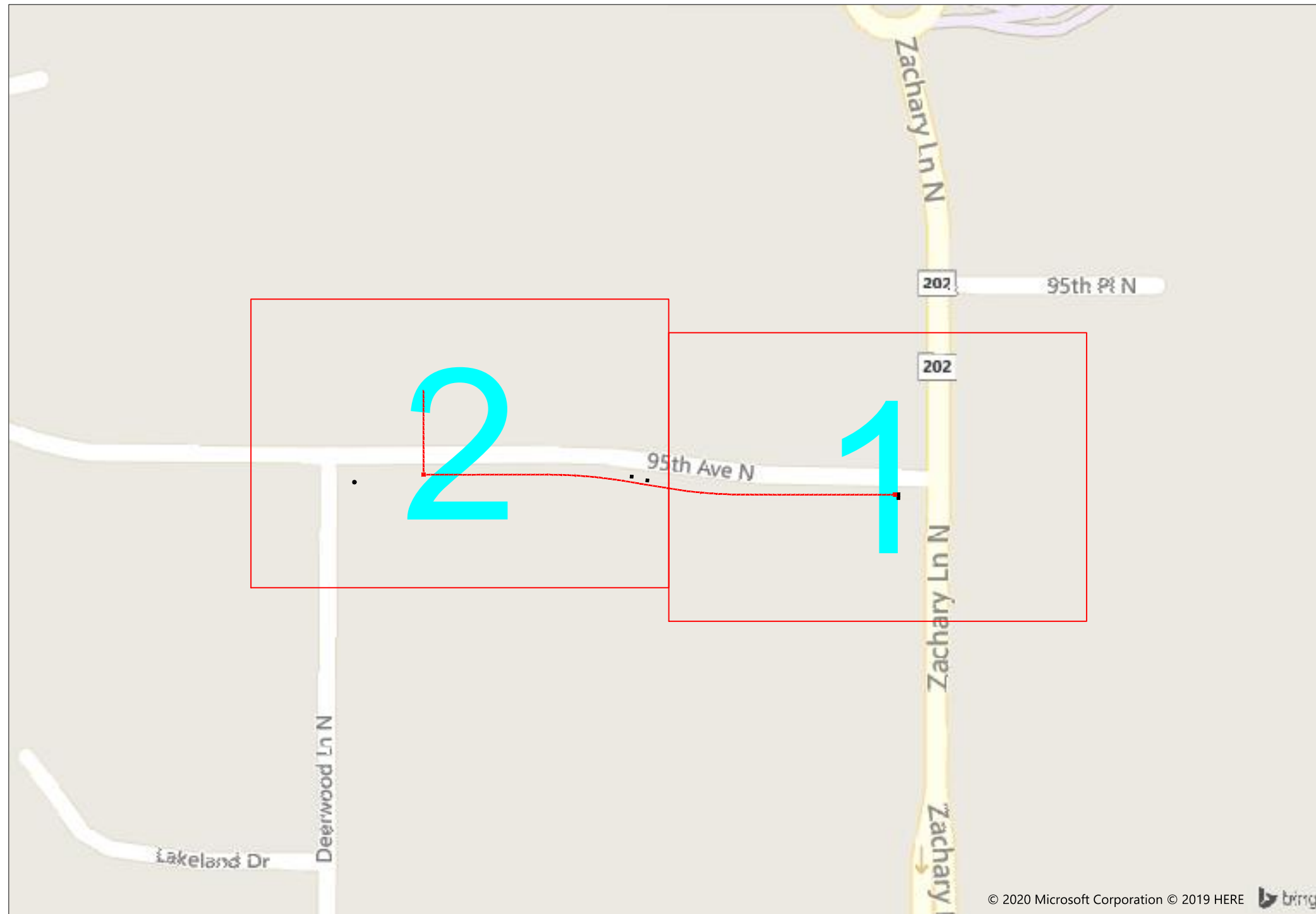


# Parnassus Prep School



11201 96th Ave N, Maple Grove, MN



1" = -

Route	Parnassus Prep
City	Maple Grove
County	Hennepin
Filename	Parnassus Prep School
Work Order #	73534



160 2nd St SW  
Perham, MN 56573  
(218) 346-5500

TRACKING	
Staked By:	
BA	01/07/20
Drafted By:	
MRT	01/14/20
Project Manager	Randy Anderson
As-Built By:	-
Revision	
Rev #1	-

Construction Totals	
Route Footage	1165
Total Underground	1165
Total Aerial	0
Underground (New)	1165
Aerial (New)	0
Overpull (Ex Duct)	0
Overlash (Ex Strand)	0
Plow	298
Bore	867
New Vaults	2
New Peds	0

**GSOC**  
GOPHER STATE ONE CALL  
1-800-252-1116  
www.gopherstateonecall.org

Prepared by:  
 compass consultants inc.  
Perham, MN 218-346-3600  
TrustCompass.com

Overall

# Legend

## Fiber Linetypes

	Proposed Underground Fiber - Bore
	Proposed Underground Fiber - Plow
	Proposed UG Fiber in Existing Duct
	Existing Underground Fiber
	Proposed Aerial Fiber
	Proposed Aerial Overlash
	Existing Aerial Fiber
	Proposed Aerial Strand
	Existing Aerial Strand

## Other Linetypes

	Rail Road
	Fence
	Retaining Wall
	Storm Sewer
	Sanitary Sewer
	Gas Line
	Tele./Comm. Line
	Water Line
	Electric Line
	Street light/Traffic signal
	District Cooling
	District Heating
	Force Main
	Other Utility or Unknown
	Utility Easement

## Symbols

	Proposed Handhole
	Existing Handhole
	Refrence Handhole
	Manhole
	Proposed Cabinet
	Existing Cabinet
	Bore Pit
	Proposed Splice Point
	Existing Splice Point
	Power Pole
	Proposed Slack Coil
	Existing Slack Coil
	Proposed Anchor/Down Guy
	Existing Anchor/Down Guy
	Proposed Riser
	Existing Riser
	Aerial Bond
	Aerial Ground
	BM53T - Fiber Marker
	BM53 - Fiber Marker
	Proposed PED
	Existing PED
	Proposed Splice Case
	Existing Splice Case

	Street Light
	Traffic Light
	Traffic Light
	Transformer
	Hydrant
	Catch Basin
	Tree

## Abbreviations

CL - Center Line
R/W - Right of Way
BOC - Back of Curb
FC - Front of Curb
EOR - Edge of Road
S/W - Sidewalk
HH - Handhole
MH - Manhole
PRT - Preterminated Cable
PRG - Pigtail Cable



1" = -

Route	Parnassus Prep
City	Maple Grove
County	Hennepin
Filename	Parnassus Prep School
Work Order #	73534

arvig  
160 2nd St SW  
Perham, MN 56573  
(218) 346-5500

TRACKING	
Staked By:	
BA	01/07/20
Drafted By:	
MRT	01/14/20
Project Manager	Randy Anderson
As-Built By:	-
Revision	
Rev #1	-

**GSOC**  
GOPHER STATE ONE CALL  
1-800-252-1116  
www.gopherstateonecall.org

Prepared by:  
 compass consultants inc.  
Perham, MN 218-346-3600  
TrustCompass.com



# Existing Access Points



Existing Zayo Vault



1" = -

Route	Parnassus Prep
City	Maple Grove
County	Hennepin
Filename	Parnassus Prep School
Work Order #	73534



160 2nd St SW  
Perham, MN 56573  
(218) 346-5500

### TRACKING

Staked By:	BA	01/07/20
Drafted By:	MRT	01/14/20
Project Manager	Randy Anderson	
As-Built By:	-	-
Revision	Rev #1	-

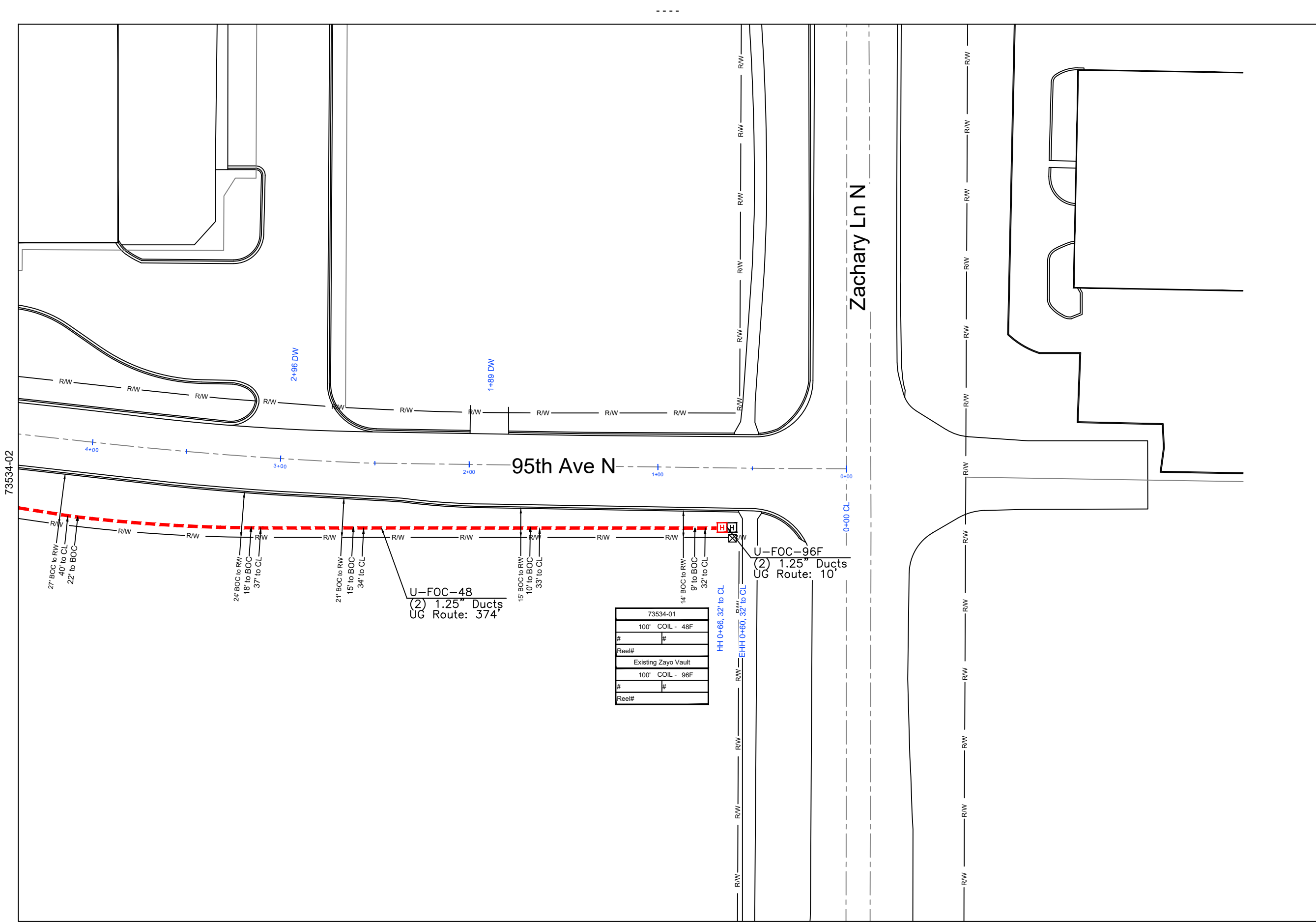
### GSOC

GOPHER STATE ONE CALL  
1-800-252-1116  
www.gopherstateonecall.org



Existing AP





1" = 50'

Route  
Parnassus Prep  
City  
Maple Grove  
County  
Hennepin  
Filename  
Parnassus Prep School  
Work Order #  
73534

**arvig**  
160 2nd St SW  
Perham, MN 56573  
(218) 346-5500

TRACKING	
Staked By:	BA 01/07/20
Drafted By:	MRT 01/14/20
Project Manager	Randy Anderson
As-Built By:	-
Revision	Rev #1 -

**GSOC**  
GOPHER STATE ONE CALL  
1-800-252-1116  
www.gopherstateonecall.org

Prepared by:  
**compass**  
consultants inc.  
Perham, MN 218-346-3600  
TrustCompass.com

73534-01



1" = 50'

Route  
Parnassus Prep

City  
Maple Grove

County  
Hennepin

Filename  
Parnassus Prep School

Work Order #  
73534



160 2nd St SW  
Perham, MN 56573  
(218) 346-5500

### TRACKING

Staked By:  
BA 01/07/20

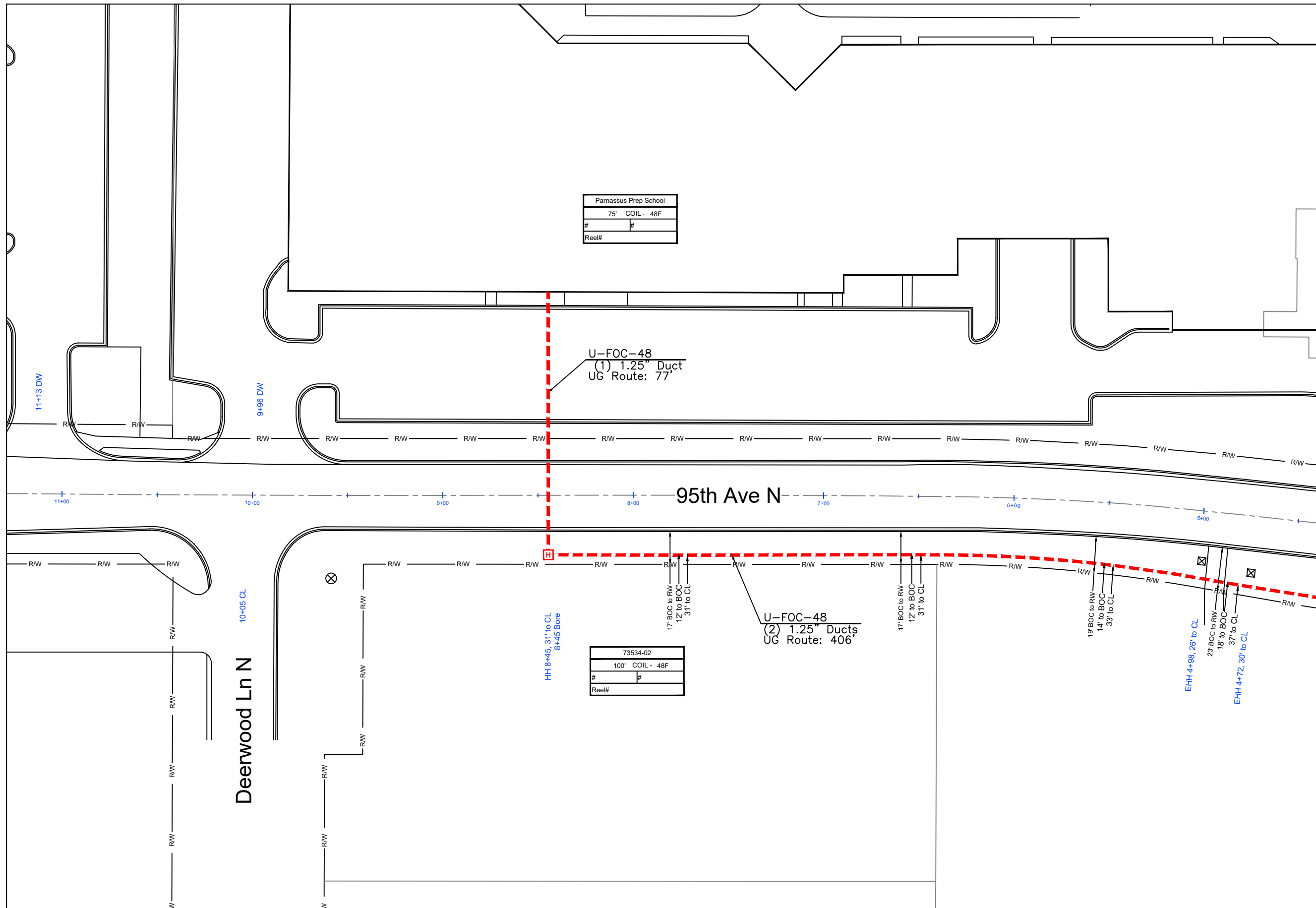
Drafted By:  
MRT 01/14/20

Project Manager  
Randy Anderson

As-Built By:  
-

Revision  
Rev #1 - -

73534-01



Parnassus Prep School	
75' COIL - 48F	
#	#
Reel#	

73534-02	
100' COIL - 48F	
#	#
Reel#	

### GSOC

GOPHER STATE ONE CALL  
1-800-252-1116  
www.gopherstateonecall.org

Prepared by:



Perham, MN 218-346-3600  
TrustCompass.com

73534-02