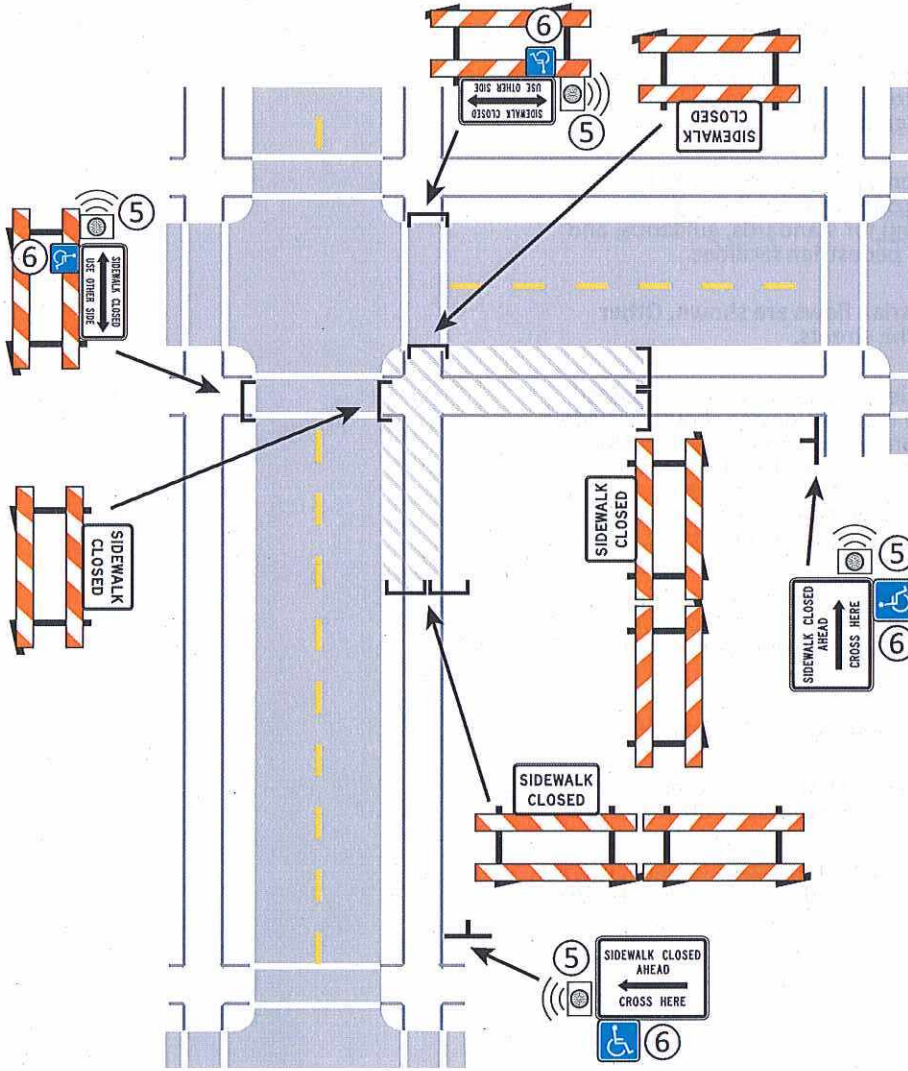


NOTES:

1. When crosswalks, sidewalks, or other pedestrian facilities are blocked, closed, or relocated, temporary facilities shall include accessibility features consistent with the features present in the existing pedestrian facility.
2. When a sidewalk is closed but workers are present to halt operations and provide safe passage through the work site, the devices shown are not required. Pedestrians may be delayed for a short period of time for project personnel to move equipment and material to facilitate passage. Project personnel may also assist pedestrians in navigating the work zone.
3. The examples show only key typical dimensions. Refer to the MnDOT [Pedestrian Accommodations Through Work Zones website \(http://www.dot.state.mn.us/trafficeng/workzone/apr.html\)](http://www.dot.state.mn.us/trafficeng/workzone/apr.html) for standards, guidance, and options when blocking, closing, or relocating pedestrian facilities.
4. Only traffic control devices controlling pedestrian flows are shown. Other devices may be needed to control traffic on the streets.
- ⑤ An approved audible message device or tactile message should be provided for sight-impaired pedestrians. When used, a message device should provide a complete physical description of the temporary pedestrian detour including duration, length of (and/or distance to) the by-pass, any restrictions or hazards, and project information. The number and location of devices should be determined for each project prior to starting work. Devices may be placed prior to sidewalk work to warn regular users of the planned work.
- ⑥ The International Symbol of Accessibility should be displayed when any walkway through a work zone has been determined to be TPAR compliant. The Symbol of Accessibility shall not be displayed if the detour is not fully accessible.
7. Pedestrian traffic signal displays controlling closed crosswalks shall be covered.
8. Pedestrian detour trailblazing signs should be used if the pedestrian detour is located someplace other than across the street from the sidewalk closure.
9. Place signs and barricades in such a way as to minimize hazard to pedestrians from walking into signs. If not possible, protect with detectable edges and/or channelizing devices.

**ALTERNATE PEDESTRIAN ROUTE
CROSSWALK CLOSURES AND PEDESTRIAN DETOURS**

3 DAYS or LESS**LAYOUT 88a****6K-88a****LAYOUT 88a & b**



ALTERNATE PEDESTRIAN ROUTE
CROSSWALK CLOSURES AND PEDESTRIAN DETOURS
3 DAYS or LESS **LAYOUT 88b** **LAYOUT 88a & b**
6K-88b