



MCImetro

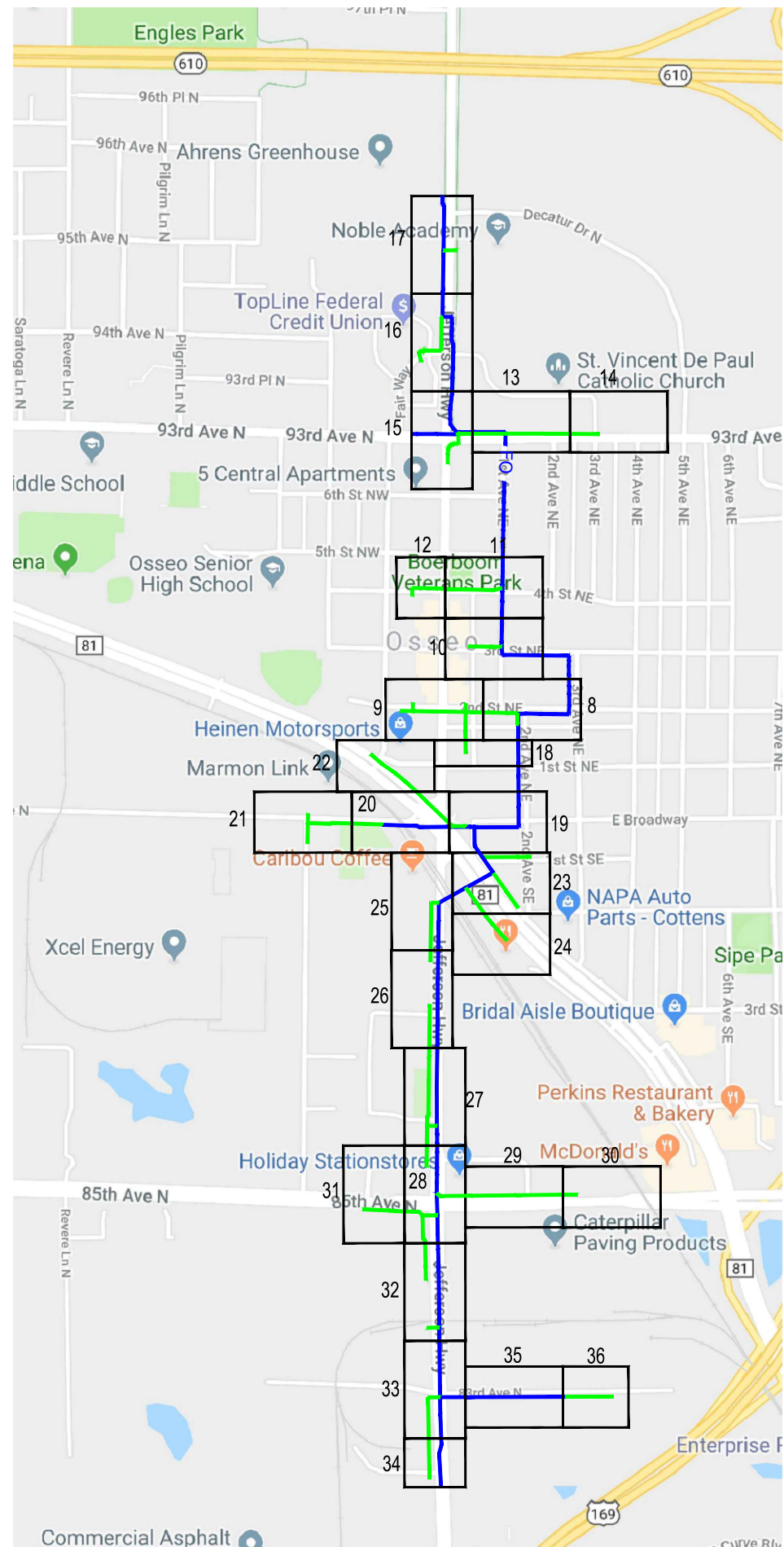
ACCESS TRANSMISSION SERVICES CORP  
D/B/A VERIZON ACCESS TRANSMISSION  
OUTSIDE PLANT CONSTRUCTION  
FIBER OPTIC CABLE ROUTE

**H1007**

SITE CODE: HENNMN  
BH03 / ALEXANDER\_M / H1007  
OSSEO, MN

PROJECT STATUS: ISSUED FOR PERMITTING  
STATUS DATE: 9/24/19

# LOCATION MAP



PROPOSED BURIED  
 PROPOSED AERIAL  
 EXISTING CORE



PROJECT: H1007

ALEXANDER\_M

OSSEO, MN

CLARIFICATION NO.	QUANTITY

MCImetro  
 ACCESS TRANSMISSION SERVICES, LLC  
  
 OUTSIDE PLANT CONSTRUCTION  
 TITLE: FIBER OPTIC CABLE ROUTE  
 H1007

DATE: 9/24/19

ENGINEER: DG

DRAWN BY: DG

### REVISIONS

DATE	DESCRIPTION	INITIAL
07/26/19	Construction Package	DG
07/26/19	QC	RLB

EXCEPT AS MAY BE OTHERWISE PROVIDED BY CONTRACT, THESE DRAWINGS AND SPECIFICATIONS SHALL REMAIN THE PROPERTY OF MCI COMMUNICATIONS SERVICES, INC., BOTH BEING ISSUED IN STRICT CONFIDENCE AND SHALL NOT BE REPRODUCED, COPIED, OR USED FOR ANY PURPOSE WITHOUT SPECIFIC WRITTEN PERMISSION.

### SCALE

HORIZONTAL: NTS

VERTICAL: NTS

MP \_\_\_\_\_ TO MP \_\_\_\_\_

SHEET 3 OF 36

FILE: H1007.DWG

PROJECT: H1007

ALEXANDER\_M

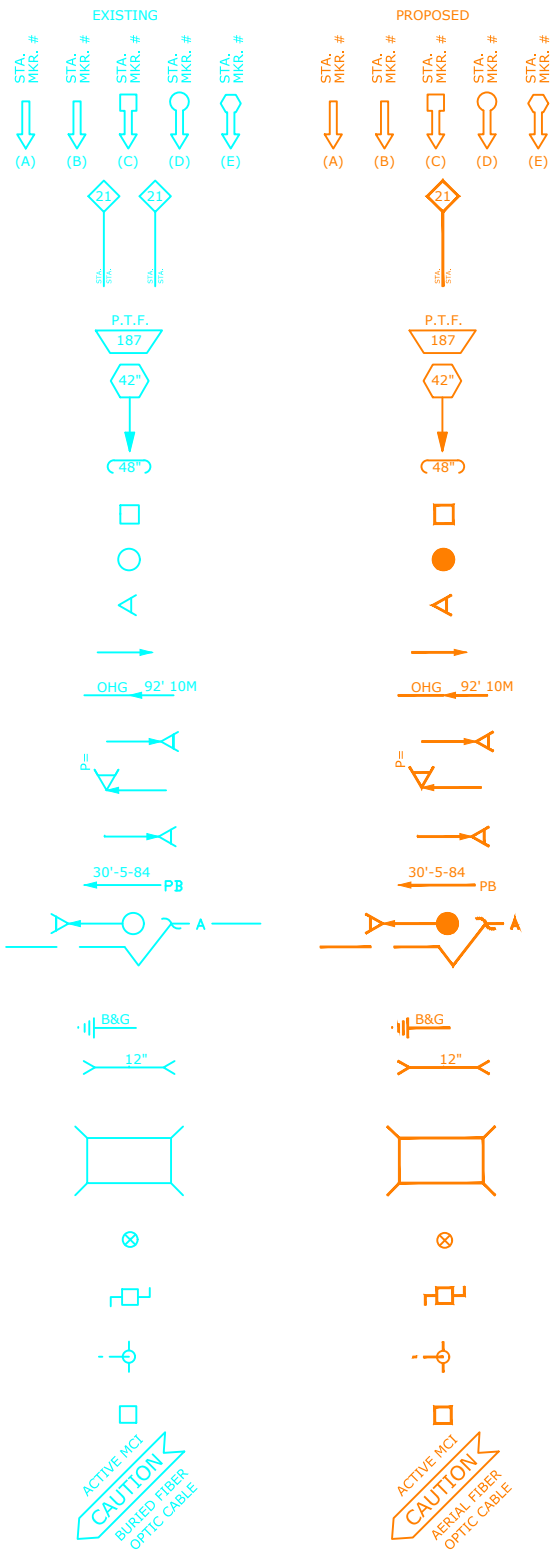
OSSEO, MN

### SYMBOLS KEY

	EXISTING	PROPOSED
BURIED CABLE		
AERIAL CABLE		
SUBMARINE CABLE		
FOGWIRE CABLE		
DIRECT BURIED HDPE		
PVC OR SPLIT PVC CONDUIT		
BSP/GSP OR SPLIT BSP/GSP CONDUIT		
STEEL CASING		
REMOVE AND RESTORE ASPHALT OR CONCRETE (WIDTH AS INDICATED)		
CORE BORE		
JACK AND BORE		
DIRECTIONAL BORE		
FUTURE CABLE		
REMOVE CABLE		
TO BE REMOVED OR ABANDONED (SHOWN FOR HDPE)		
AERIAL UTILITY (ELECTRIC)		
UNDERGROUND UTILITY (TELEPHONE)		
MAIN TRACKS		
AUXILLARY TRACKS		
CENTERLINE		
RIGHT-OF-WAY		
EDGE OF PAVEMENT		
SIDEWALK		
DITCH LINE		
TAX DISTRICT		
CITY, COUNTY OR STATE BOUNDARY LINE		
PROPERTY LINE		
FENCE LINE		
GUARDRAIL		
TOP OF SLOPE		
TOE OF SLOPE		
FACE OF CURB		
PROPOSED FIBER IN EXISTING DUCT		
PROPOSED FIBER AND DUCT		
PROPOSED DUCT		
MST TAIL		
EXISTING MCI		

DISTRICT ENERGY		DE
GAS		G
WATER		W
TELEPHONE		T
ELECTRIC		E
SANITARY SEWER (SEW)		SEW
STORM DRAIN		SD
FENCE		X
CABLE TV		TV
STEAM		STM
OIL		OIL
UNKNOWN UTILITY		UNK
RIGHT OF WAY		R/W
FACE OF CURB		F of C
STREET LT/TRAFFIC SIGNAL		SL/TS
EDGE OF PAVEMENT		EOP
MST - PROPOSED		ROUTE_NO STA FIBER_CNT
HANDHOLE - EXISTING		30"x60"x30" 0+00
HANDHOLE - PROPOSED		STA 0+00 24x36x24
MANHOLE - EXISTING		MH-
MANHOLE - PROPOSED		STA 0+00
SPLICE CASE - EXISTING		
SPLICE CASE - PROPOSED		
SITE CALLOUT - PROPOSED		MACRO CELL NAME STREET
AERIAL STORAGE - EXISTING		
AERIAL STORAGE - PROPOSED		
FDH - PROPOSED		FDH# FDH SIZE F1_COUNT
POWER PEDESTAL		P
TELE PHONE PEDESTAL		T
CABLE PEDESTAL		TV

STEEL MARKER AND SIGN-(A)		(A)
ALUMINUM "HUB"-STYLE MARKER-(B)		(B)
FLAT MARKER-(C)		(C)
TUBULAR MARKER-(D)		(D)
TUBULAR MARKER, & ISOLATOR PROTECTOR-(E)		(E)
MILE POST MARKER		
NOTE: DASHED = NOT FOUND IN FIELD		
PERMIT TRACKING FORM IDENTIFIER		P.T.F. 187
ROCK PROBE (DEPTH AS INDICATED)		42"
UTILITY COVER DEPTH		48"
HANDHOLE, MANHOLE OR PULLBOX		
POLE		
ANCHOR ONLY		A
GUY ONLY		
OVERHEAD GUY (ARROW IN DIRECTION OF PULL)		OHG 92' 10M
ANCHOR AND GUY		
SIDEWALK ANCHOR AND GUY		PB
FOREIGN ANCHOR AND GUY		
PUSH BRACE (EXISTING POLE)		30'-5-84' PB
ACCOUNT CODE CHANGE (BURIED TO AERIAL)		
BOND AND GROUND		B&G
CULVERT (SIZE AS INDICATED)		12"
BRIDGE		
WATER METER		
GAS VALVE		
FIRE HYDRANT		
RAILROAD SIGNAL CONTROL BOX		
CAUTION NOTE		ACTIVE MCI CAUTION BURIED FIBER OPTIC CABLE
FIBER CALL OUTS		U-FOC-48 FH/BH = CORE FRONT HAUL / BACK HAUL STRAND ASSIGNMENT F1 = ODN FEEDER STRAND ASSIGNMENT F2 = ODN DISTRIBUTION STRAND ASSIGNMENT XD = DEAD STRANDS VAC = STRAND NOT YET ASSIGNED



CLARIFICATION NO.	QUANTITY

MCImetro  
ACCESS TRANSMISSION SERVICES, LLC  
OUTSIDE PLANT CONSTRUCTION  
TITLE: FIBER OPTIC CABLE ROUTE H1007

DATE: 9/24/19		
ENGINEER: DG		
DRAWN BY: DG		
REVISIONS		
DATE	DESCRIPTION	INITIAL
07/26/19	Construction Package	DG
07/26/19	QC	RLB

EXCEPT AS MAY BE OTHERWISE PROVIDED BY CONTRACT, THESE DRAWINGS AND SPECIFICATIONS SHALL REMAIN THE PROPERTY OF MCI COMMUNICATIONS SERVICES, INC., BOTH BEING ISSUED IN STRICT CONFIDENCE AND SHALL NOT BE REPRODUCED, COPIED, OR USED FOR ANY PURPOSE WITHOUT SPECIFIC WRITTEN PERMISSION.

SCALE

HORIZONTAL: NTS

VERTICAL: NTS

MP \_\_\_\_ TO MP \_\_\_\_

SHEET 6 OF 36

FILE: H1007.DWG

CLARIFICATION NO.	QUANTITY

MCI metro  
**ACCESS TRANSMISSION SERVICES, LLC**  
  
**OUTSIDE PLANT CONSTRUCTION**  
**TITLE: FIBER OPTIC CABLE ROUTE**  
**H1007**

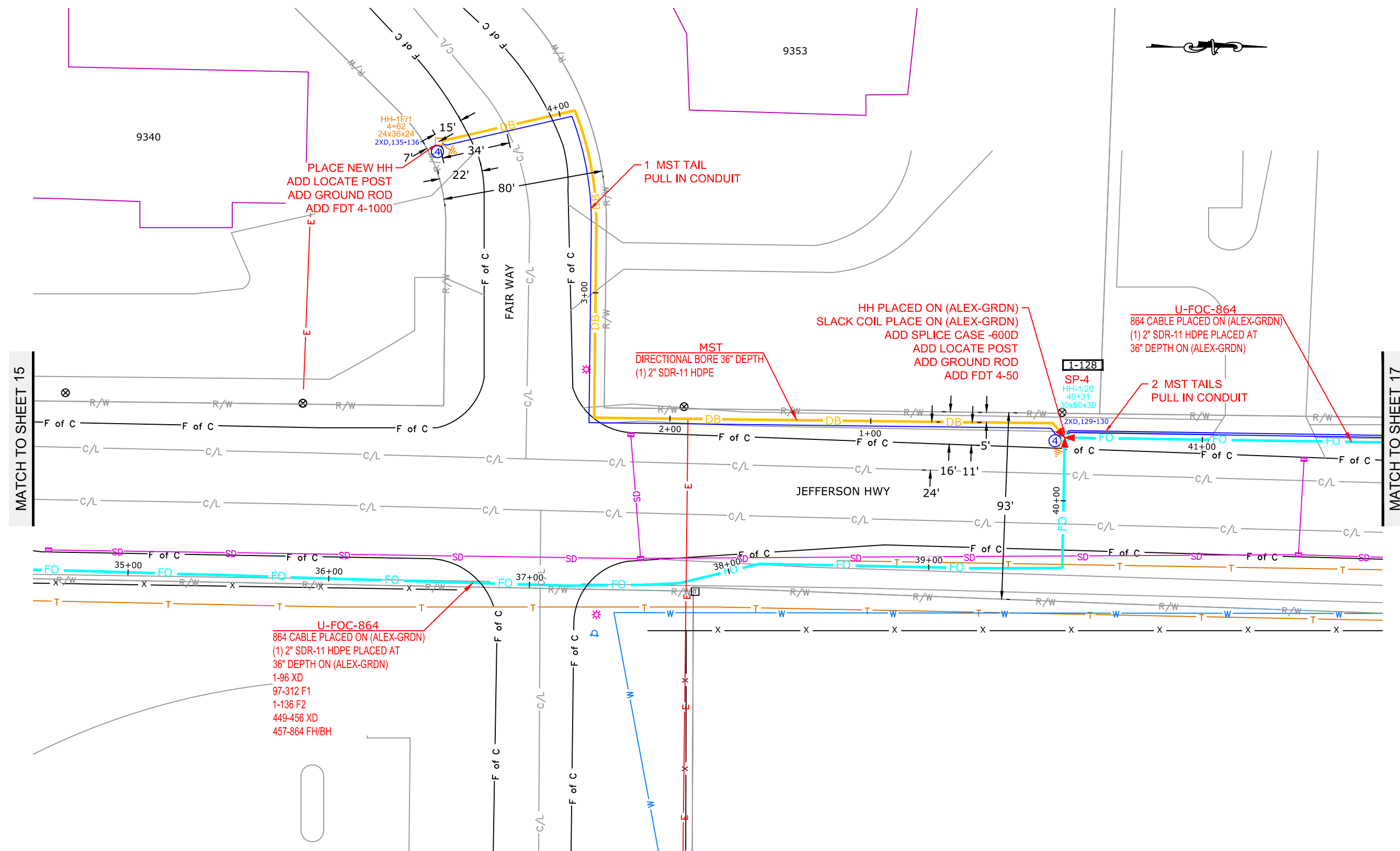
**DATE:** 9/24/19  
**ENGINEER:** DG  
**DRAWN BY:** DG

**REVISIONS**

DATE	DESCRIPTION	INITIAL
07/26/19	Construction Package	DG
07/26/19	QC	RLB

EXCEPT AS MAY BE OTHERWISE PROVIDED BY CONTRACT, THESE DRAWINGS AND SPECIFICATIONS SHALL REMAIN THE PROPERTY OF MCI COMMUNICATIONS SERVICES, INC., BOTH BEING ISSUED IN STRICT CONFIDENCE AND SHALL NOT BE REPRODUCED, COPIED, OR USED FOR ANY PURPOSE WITHOUT SPECIFIC WRITTEN PERMISSION.

**SCALE**  
**HORIZONTAL:** 1"=50'  
**VERTICAL:** 1"=50'  
 MP \_\_\_\_\_ TO MP \_\_\_\_\_  
**SHEET 16 OF 36**  
**FILE:** H1007



MATCH TO SHEET 15

MATCH TO SHEET 17

**U-FOC-864**  
 864 CABLE PLACED ON (ALEX-GRDN)  
 (1) 2" SDR-11 HDPE PLACED AT  
 36" DEPTH ON (ALEX-GRDN)  
 1-96 XD  
 97-312 F1  
 1-136 F2  
 449-456 XD  
 457-864 FH/BH

PLACE NEW HH  
 ADD LOCATE POST  
 ADD GROUND ROD  
 ADD FDT 4-1000

MST  
 DIRECTIONAL BORE 36" DEPTH  
 (1) 2" SDR-11 HDPE

HH PLACED ON (ALEX-GRDN)  
 SLACK COIL PLACE ON (ALEX-GRDN)  
 ADD SPLICE CASE -600D  
 ADD LOCATE POST  
 ADD GROUND ROD  
 ADD FDT 4-50

**U-FOC-864**  
 864 CABLE PLACED ON (ALEX-GRDN)  
 (1) 2" SDR-11 HDPE PLACED AT  
 36" DEPTH ON (ALEX-GRDN)  
 2 MST TAILS  
 PULL IN CONDUIT



PROJECT: H1007

ALEXANDER\_M

OSSEO, MN

CLARIFICATION NO. QUANTITY

CLARIFICATION NO.	QUANTITY

MCI  
ACCESS TRANSMISSION SERVICES, LLC  
OUTSIDE PLANT CONSTRUCTION  
TITLE: FIBER OPTIC CABLE ROUTE  
H1007

DATE: 9/24/19

ENGINEER: DG

DRAWN BY: DG

REVISIONS

DATE	DESCRIPTION	INITIAL
07/26/19	Construction Package	DG
07/26/19	QC	RLB

EXCEPT AS MAY BE OTHERWISE PROVIDED BY CONTRACT,  
THESE DRAWINGS AND SPECIFICATIONS SHALL REMAIN  
THE PROPERTY OF MCI COMMUNICATIONS SERVICES, INC.,  
BOTH BEING ISSUED IN STRICT CONFIDENCE AND SHALL  
NOT BE REPRODUCED, COPIED, OR USED FOR ANY PURPOSE  
WITHOUT SPECIFIC WRITTEN PERMISSION.

SCALE

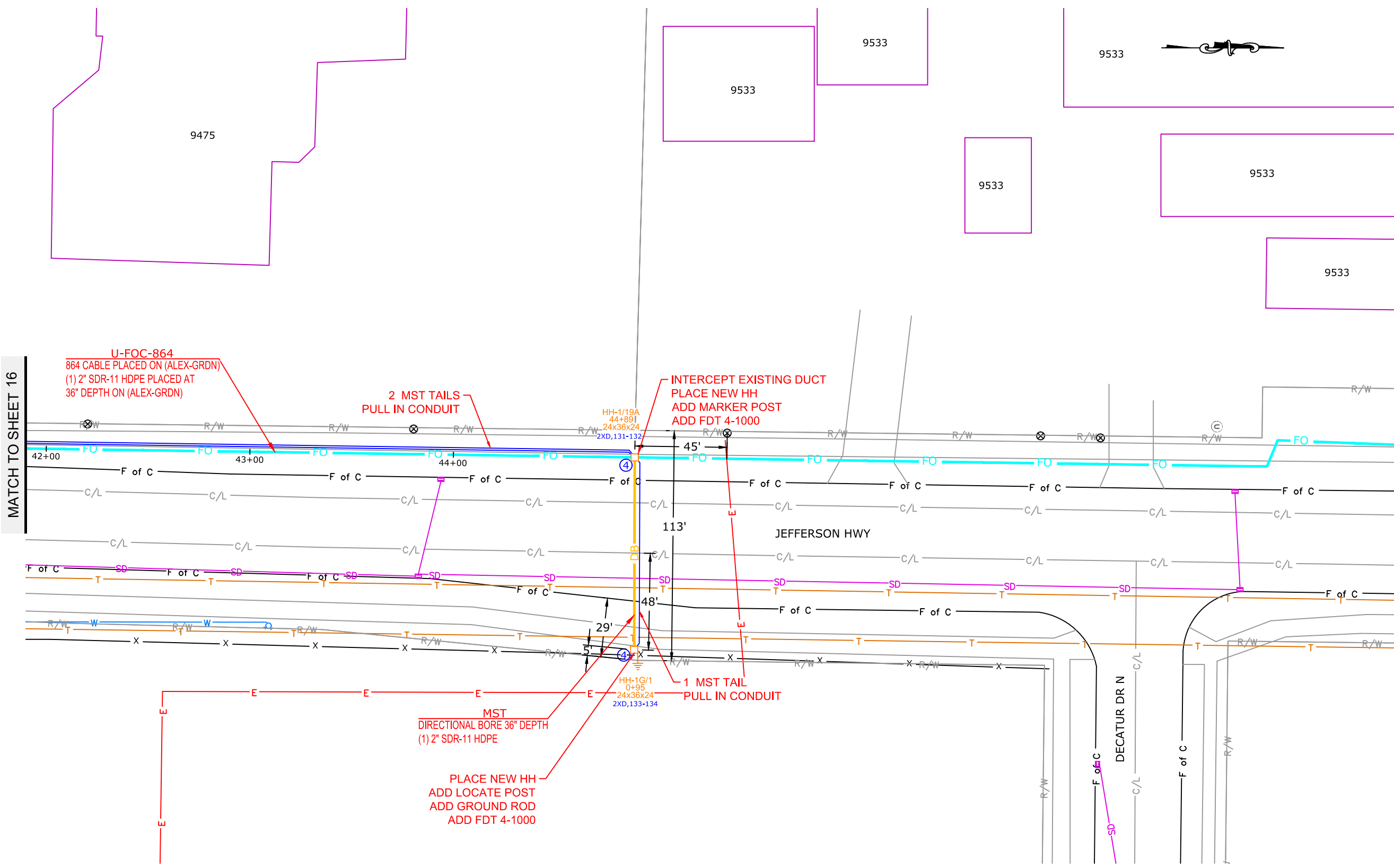
HORIZONTAL: 1"=50'

VERTICAL: 1"=50'

MP TO MP

SHEET 17 OF 36

FILE: H1007





PROJECT: H1007

ALEXANDER\_M

OSSEO, MN

CLARIFICATION NO. QUANTITY

CLARIFICATION NO.	QUANTITY

MCImetro  
ACCESS TRANSMISSION SERVICES, LLC  
OUTSIDE PLANT CONSTRUCTION  
TITLE: FIBER OPTIC CABLE ROUTE  
H1007

DATE: 9/24/19

ENGINEER: DG

DRAWN BY: DG

REVISIONS

DATE	DESCRIPTION	INITIAL
07/26/19	Construction Package	DG
07/26/19	QC	RLB

EXCEPT AS MAY BE OTHERWISE PROVIDED BY CONTRACT, THESE DRAWINGS AND SPECIFICATIONS SHALL REMAIN THE PROPERTY OF MCI COMMUNICATIONS SERVICES, INC., BOTH BEING ISSUED IN STRICT CONFIDENCE AND SHALL NOT BE REPRODUCED, COPIED, OR USED FOR ANY PURPOSE WITHOUT SPECIFIC WRITTEN PERMISSION.

SCALE

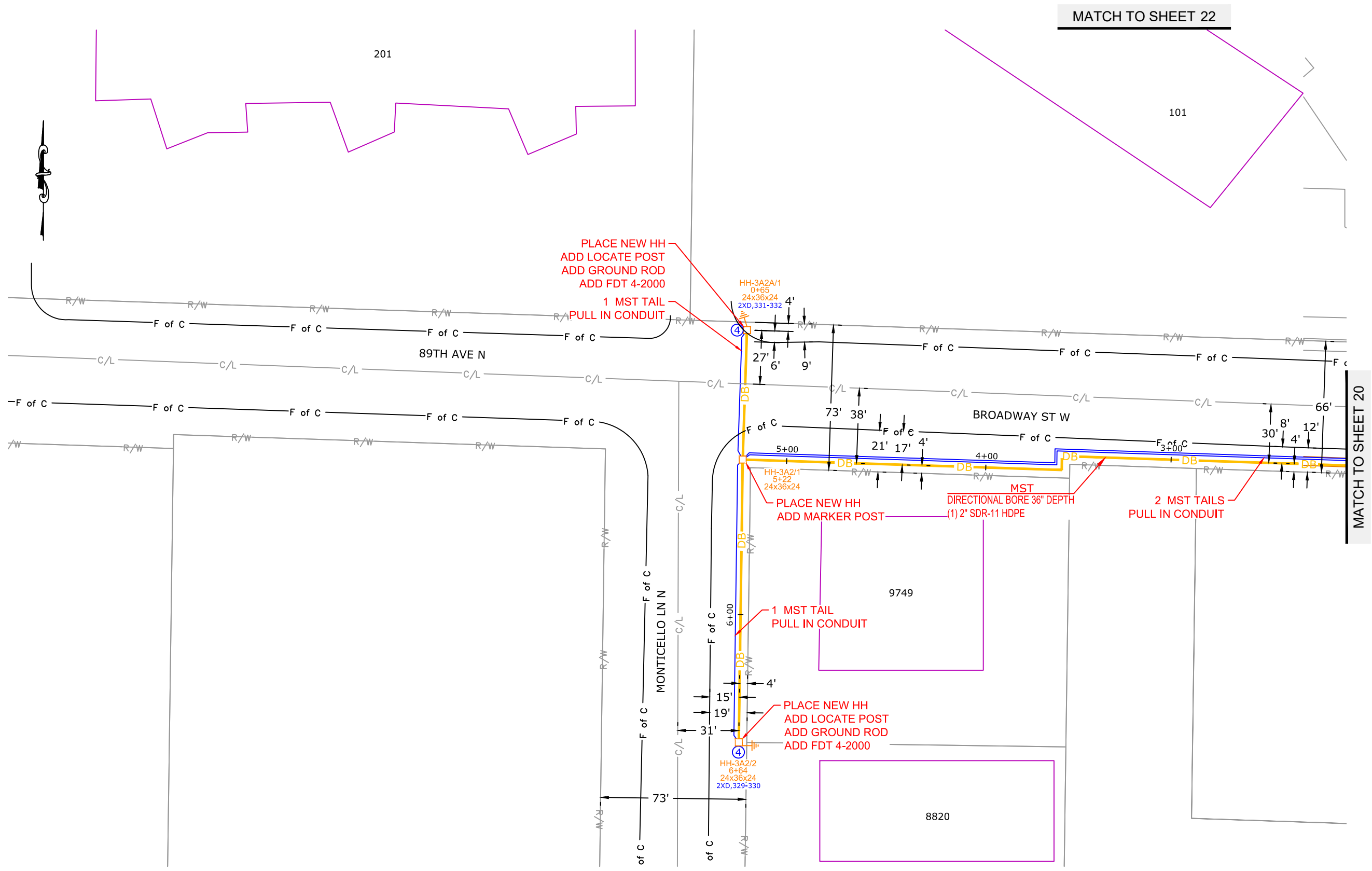
HORIZONTAL: 1"=50'

VERTICAL: 1"=50'

MP TO MP

SHEET 21 OF 36

FILE: H1007



MATCH TO SHEET 22

MATCH TO SHEET 20

201

101

89TH AVE N

BROADWAY ST W

MONTICELLO LN N

9749

8820

HH-3A2A/1  
0+65  
24x36x24  
2XD.331-332

HH-3A2/1  
5+22  
24x36x24

HH-3A2/2  
6+64  
24x36x24  
2XD.329-330

PLACE NEW HH  
ADD LOCATE POST  
ADD GROUND ROD  
ADD FDT 4-2000  
1 MST TAIL  
PULL IN CONDUIT

PLACE NEW HH  
ADD MARKER POST

MST  
DIRECTIONAL BORE 36" DEPTH  
(1) 2" SDR-11 HDPE

2 MST TAILS  
PULL IN CONDUIT

1 MST TAIL  
PULL IN CONDUIT

PLACE NEW HH  
ADD LOCATE POST  
ADD GROUND ROD  
ADD FDT 4-2000



PROJECT: H1007

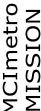
ALEXANDER\_M

OSSEO, MN

CLARIFICATION NO. QUANTITY

CLARIFICATION NO.	QUANTITY

MCImetro



ACCESS TRANSMISSION SERVICES, LLC



OUTSIDE PLANT CONSTRUCTION

TITLE: FIBER OPTIC CABLE ROUTE

H1007

DATE: 9/24/19

ENGINEER: DG

DRAWN BY: DG

REVISIONS

DATE	DESCRIPTION	INITIAL
07/26/19	Construction Package	DG
07/26/19	QC	RLB

EXCEPT AS MAY BE OTHERWISE PROVIDED BY CONTRACT, THESE DRAWINGS AND SPECIFICATIONS SHALL REMAIN THE PROPERTY OF MCI COMMUNICATIONS SERVICES, INC., BOTH BEING ISSUED IN STRICT CONFIDENCE AND SHALL NOT BE REPRODUCED, COPIED, OR USED FOR ANY PURPOSE WITHOUT SPECIFIC WRITTEN PERMISSION.

SCALE

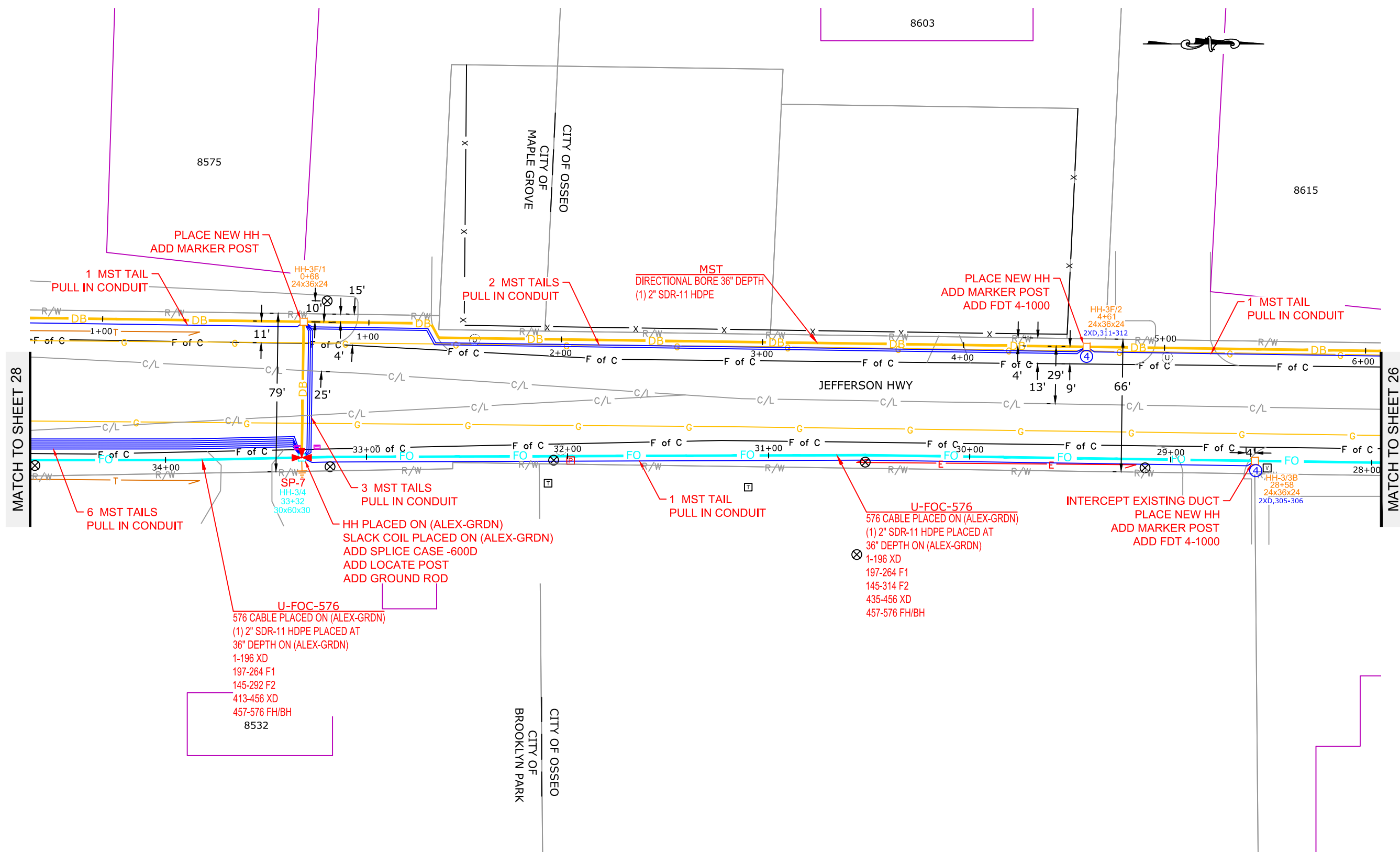
HORIZONTAL: 1"=50'

VERTICAL: 1"=50'

MP TO MP

SHEET 27 OF 36

FILE: H1007



MATCH TO SHEET 28

MATCH TO SHEET 26



PROJECT: H1007

ALEXANDER\_M

OSSEO, MN

CLARIFICATION NO. QUANTITY

CLARIFICATION NO.	QUANTITY

MCImetro  
ACCESS TRANSMISSION SERVICES, LLC



OUTSIDE PLANT CONSTRUCTION

TITLE: FIBER OPTIC CABLE ROUTE

H1007

DATE: 9/24/19

ENGINEER: DG

DRAWN BY: DG

REVISIONS

DATE	DESCRIPTION	INITIAL
07/26/19	Construction Package	DG
07/26/19	QC	RLB

EXCEPT AS MAY BE OTHERWISE PROVIDED BY CONTRACT, THESE DRAWINGS AND SPECIFICATIONS SHALL REMAIN THE PROPERTY OF MCI COMMUNICATIONS SERVICES, INC., BOTH BEING ISSUED IN STRICT CONFIDENCE AND SHALL NOT BE REPRODUCED, COPIED, OR USED FOR ANY PURPOSE WITHOUT SPECIFIC WRITTEN PERMISSION.

SCALE

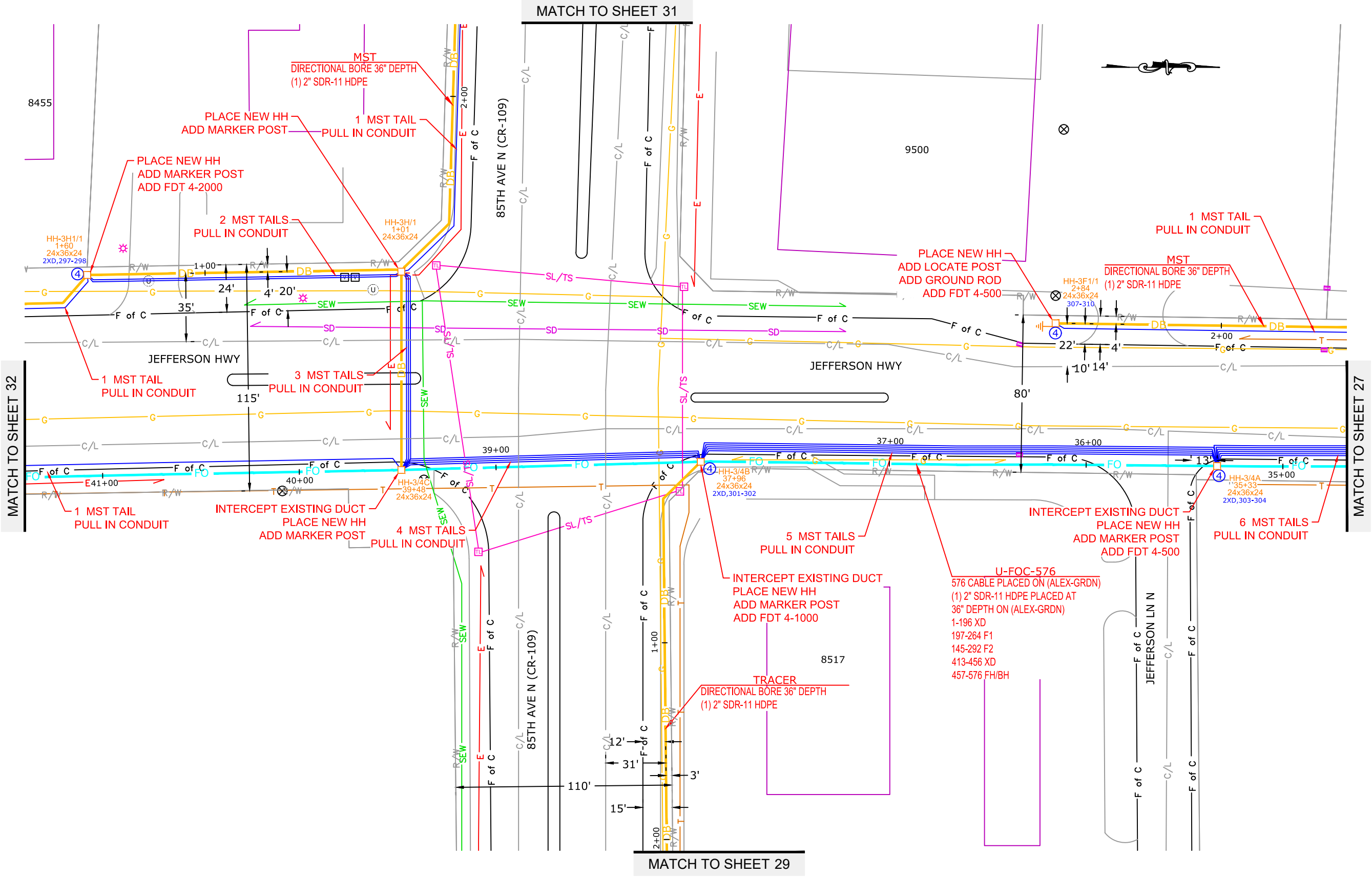
HORIZONTAL: 1"=50'

VERTICAL: 1"=50'

MP \_\_\_\_\_ TO MP \_\_\_\_\_

SHEET 28 OF 36

FILE: H1007







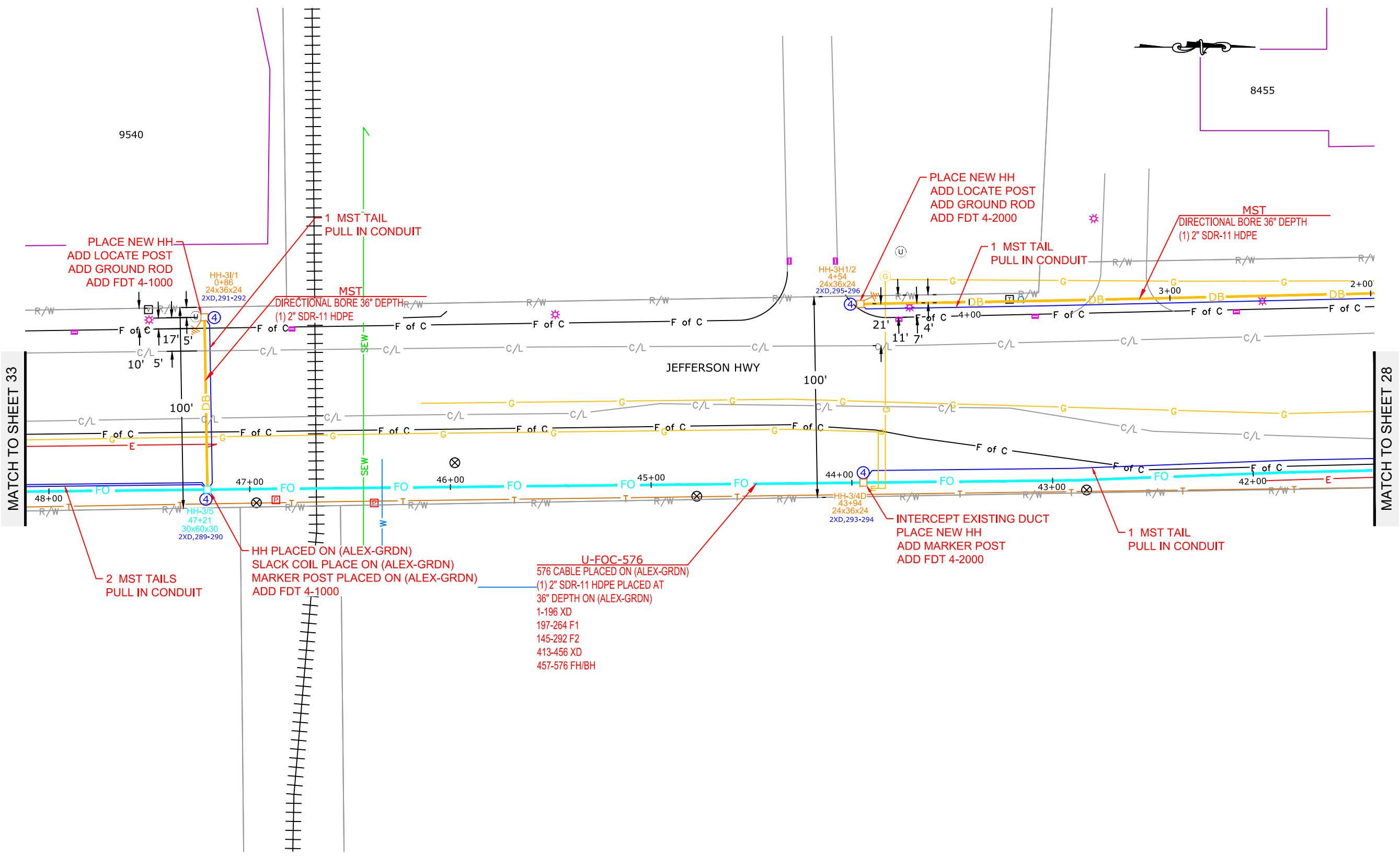
PROJECT: H1007

ALEXANDER\_M

OSSEO, MN

CLARIFICATION NO. QUANTITY

CLARIFICATION NO.	QUANTITY



MCImetro  
ACCESS TRANSMISSION SERVICES, LLC

**MCI**

OUTSIDE PLANT CONSTRUCTION

TITLE: FIBER OPTIC CABLE ROUTE

H1007

DATE: 9/24/19

ENGINEER: DG

DRAWN BY: DG

REVISIONS

DATE	DESCRIPTION	INITIAL
07/26/19	Construction Package	DG
07/26/19	QC	RLB

EXCEPT AS MAY BE OTHERWISE PROVIDED BY CONTRACT, THESE DRAWINGS AND SPECIFICATIONS SHALL REMAIN THE PROPERTY OF MCI COMMUNICATIONS SERVICES, INC., BOTH BEING ISSUED IN STRICT CONFIDENCE AND SHALL NOT BE REPRODUCED, COPIED, OR USED FOR ANY PURPOSE WITHOUT SPECIFIC WRITTEN PERMISSION.

SCALE

HORIZONTAL: 1"=50'

VERTICAL: 1"=50'

MP TO MP

SHEET 32 OF 36

FILE: H1007

PROJECT: H1007

ALEXANDER\_M

OSSEO, MN

CLARIFICATION NO. QUANTITY

CLARIFICATION NO.	QUANTITY

MCImetro  
ACCESS TRANSMISSION SERVICES, LLC

**MCI**  
OUTSIDE PLANT CONSTRUCTION

TITLE: FIBER OPTIC CABLE ROUTE

H1007

DATE: 9/24/19

ENGINEER: DG

DRAWN BY: DG

**REVISIONS**

DATE	DESCRIPTION	INITIAL
07/26/19	Construction Package	DG
07/26/19	QC	RLB

EXCEPT AS MAY BE OTHERWISE PROVIDED BY CONTRACT, THESE DRAWINGS AND SPECIFICATIONS SHALL REMAIN THE PROPERTY OF MCI COMMUNICATIONS SERVICES, INC. BOTH BEING ISSUED IN STRICT CONFIDENCE AND SHALL NOT BE REPRODUCED, COPIED, OR USED FOR ANY PURPOSE WITHOUT SPECIFIC WRITTEN PERMISSION.

**SCALE**

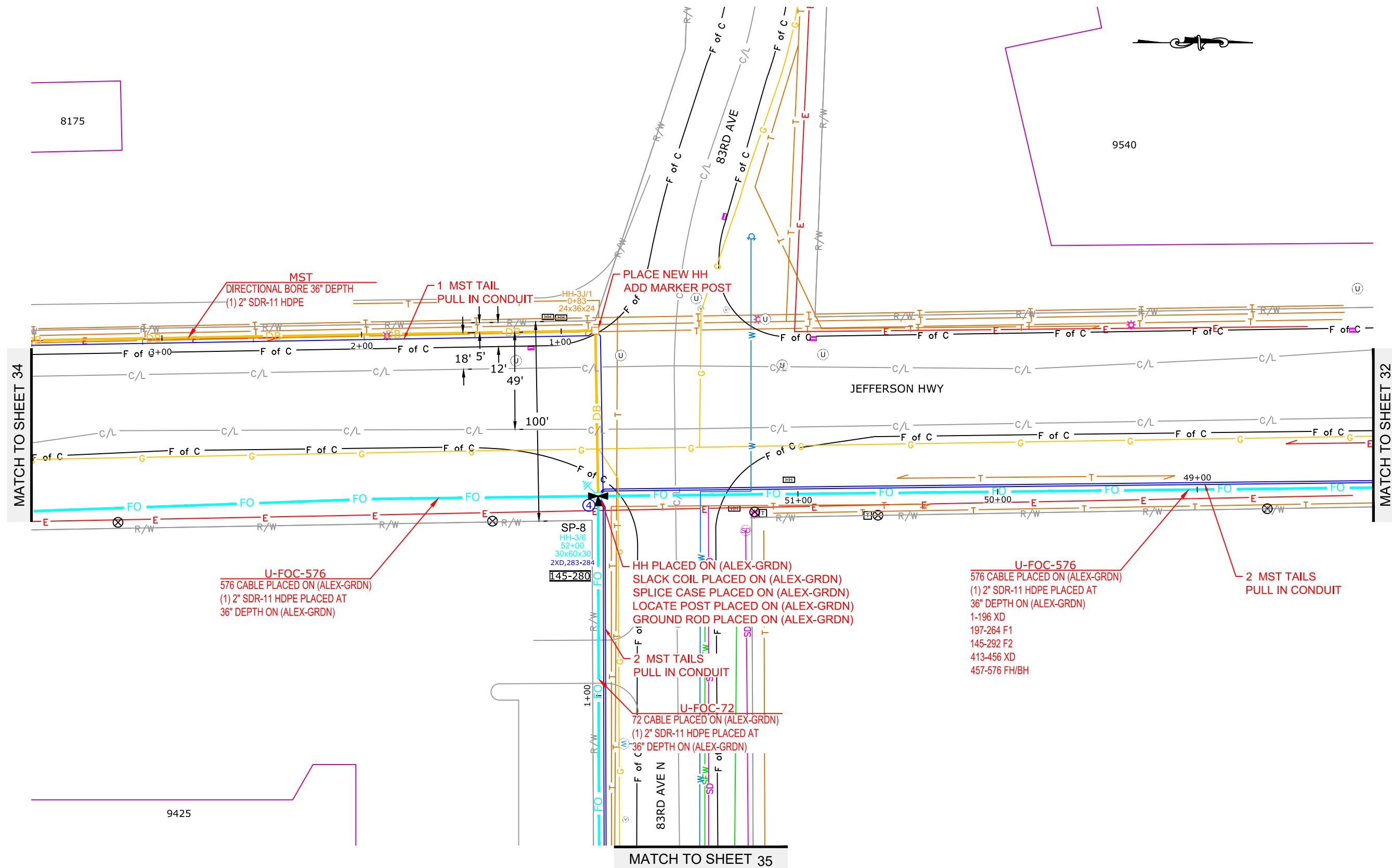
**HORIZONTAL:** 1"=50'

**VERTICAL:** 1"=50'

MP TO MP

SHEET 33 OF 36

FILE: H1007



8175

9540

MATCH TO SHEET 34

MATCH TO SHEET 32

9425

MATCH TO SHEET 35



PROJECT: H1007

ALEXANDER\_M

OSSEO, MN

CLARIFICATION NO. QUANTITY

CLARIFICATION NO.	QUANTITY

MCI metro  
ACCESS TRANSMISSION SERVICES, LLC



OUTSIDE PLANT CONSTRUCTION

TITLE: FIBER OPTIC CABLE ROUTE

H1007

DATE: 9/24/19

ENGINEER: DG

DRAWN BY: DG

REVISIONS

DATE	DESCRIPTION	INITIAL
07/26/19	Construction Package	DG
07/26/19	QC	RLB

EXCEPT AS MAY BE OTHERWISE PROVIDED BY CONTRACT, THESE DRAWINGS AND SPECIFICATIONS SHALL REMAIN THE PROPERTY OF MCI COMMUNICATIONS SERVICES, INC., BOTH BEING ISSUED IN STRICT CONFIDENCE AND SHALL NOT BE REPRODUCED, COPIED, OR USED FOR ANY PURPOSE WITHOUT SPECIFIC WRITTEN PERMISSION.

SCALE

HORIZONTAL: 1"=50'

VERTICAL: 1"=50'

MP TO MP

SHEET 34 OF 36

FILE: H1007

