

MS14XC848



Weaver Lake Road



1" = -

Route	MS14XC848
City	Maple Grove
County	Hennepin
Filename	MN009-90 MS14XC848
Work Order #	MN009-90 MS14XC848



5005 Cheshire Pkwy, Suite 1
Plymouth, MN 55446

TRACKING

Staked By:	BA	8/22/2019
Drafted By:	MRT	9/6/2019
Project Manager	Aaron Zierden	
As-Built By:	-	-
Revision	Rev #1	-

Construction Totals	
Route Footage	1097
Total Underground	1097
Total Aerial	0
Underground (New)	0
Aerial (New)	0
Overpull (Ex Duct)	1097
Overlash (Ex Strand)	0
Plow	0
Bore	0
New Vaults	1
New Peds	0

GSOC
GOPHER STATE ONE CALL
1-800-252-1116
www.gopherstateonecall.org

Prepared by:
 compass consultants inc.
Perham, MN 218-346-3600
TrustCompass.com

Overall

Legend

Fiber Linetypes

	Proposed Underground Fiber - Bore
	Proposed Underground Fiber - Plow
	Proposed UG Fiber in Existing Duct
	Existing Underground Fiber
	Proposed Aerial Fiber
	Proposed Aerial Overlash
	Existing Aerial Fiber
	Proposed Aerial Strand
	Existing Aerial Strand

Other Linetypes

	Rail Road
	Fence
	Storm Sewer
	Sanitary Sewer
	Gas Line
	Tele./Comm. Line
	Water Line
	Electric Line
	Street light/Traffic signal
	District Cooling
	District Heating
	Force Main
	Other Utility or Unknown
	Utility Easement

Abbreviations

CL	- Center Line
R/W	- Right of Way
BOC	- Back of Curb
FC	- Front of Curb
EOR	- Edge of Road
S/W	- Sidewalk
HH	- Handhole
MH	- Manhole

Symbols

	Proposed Handhole
	Existing Handhole
	Reference Handhole
	Manhole
	Proposed Splice Point
	Existing Splice Point
	Power Pole
	Proposed Slack Coil
	Existing Slack Coil
	Proposed Anchor/Down Guy
	Existing Anchor/Down Guy
	Proposed Riser
	Existing Riser
	Aerial Bond
	Aerial Ground
	BM53T - Fiber Marker
	BM53 - Fiber Marker
	Tree
	Street Light
	Traffic Light
	Proposed PED
	Existing PED
	Proposed Splice Case
	Existing Splice Case

Construction Totals

Route Footage	1097
Total Underground	1097
Total Aerial	0
Underground (New)	0
Aerial (New)	0
Overpull (Ex Duct)	1097
Overlash (Ex Strand)	0
Plow	0
Bore	0
New Vaults	1
New Peds	0

Fiber

TBD Fiber	1197
12 Fiber	0
24 Fiber	0
36 Fiber	0
48 Fiber	0
72 Fiber	0
96 Fiber	0
144 Fiber	0
288 Fiber	0
12 Dielectric Fiber	0
24 Dielectric Fiber	0
36 Dielectric Fiber	0
48 Dielectric Fiber	0
72 Dielectric Fiber	0
96 Dielectric Fiber	0
144 Dielectric Fiber	0
288 Dielectric Fiber	0

Materials

Duct (1.25")	0
Vault(Small)	0
Vault (Medium)	1
Vault (Large)	0
PED BD5	0
Warning Sign	0
Locate Terminal	1
Ground Rod	1
Strand	0



1" = -

Route	MS14XC848
City	Maple Grove
County	Hennepin
Filename	MN009-90 MS14XC848
Work Order #	MN009-90 MS14XC848



5005 Cheshire Pkwy, Suite 1
Plymouth, MN 55446

TRACKING

Staked By:	BA	8/22/2019
Drafted By:	MRT	9/6/2019
Project Manager	Aaron Zierden	
As-Built By:	-	-
Revision	Rev #1	-



GOPHER STATE ONE CALL
1-800-252-1116
www.gopherstateonecall.org

Prepared by:



Perham, MN 218-346-3600
TrustCompass.com

Legend

Existing Access Points



Existing Zayo Vault



1" = -

Route	MS14XC848
City	Maple Grove
County	Hennepin
Filename	MN009-90 MS14XC848
Work Order #	MN009-90 MS14XC848



5005 Cheshire Pkwy, Suite 1
Plymouth, MN 55446

TRACKING

Staked By:	BA	8/22/2019
Drafted By:	MRT	9/6/2019
Project Manager	Aaron Zierden	
As-Built By:	-	-
Revision	Rev #1	-

GSOC

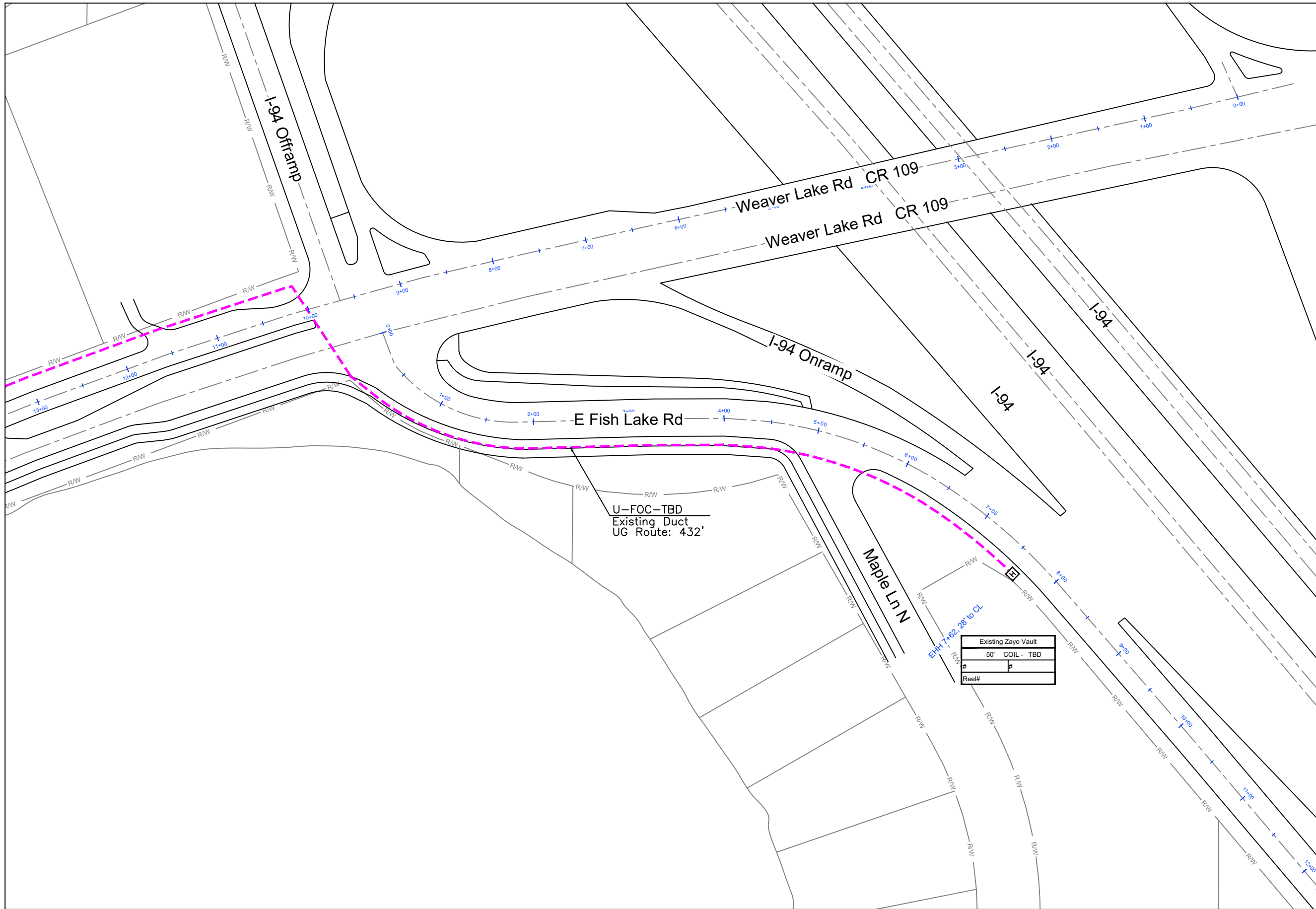
GOPHER STATE ONE CALL
1-800-252-1116
www.gopherstateonecall.org

Prepared by:



Perham, MN 218-346-3600
TrustCompass.com

Existing AP



MS14XC848-02



1" = 100'

Route	MS14XC848
City	Maple Grove
County	Hennepin
Filename	MN009-90 MS14XC848
Work Order #	MN009-90 MS14XC848



5005 Cheshire Pkwy, Suite 1
Plymouth, MN 55446

TRACKING

Staked By:	BA	8/22/2019
Drafted By:	MRT	9/6/2019
Project Manager	Aaron Zierden	
As-Built By:	-	-
Revision	Rev #1 - -	

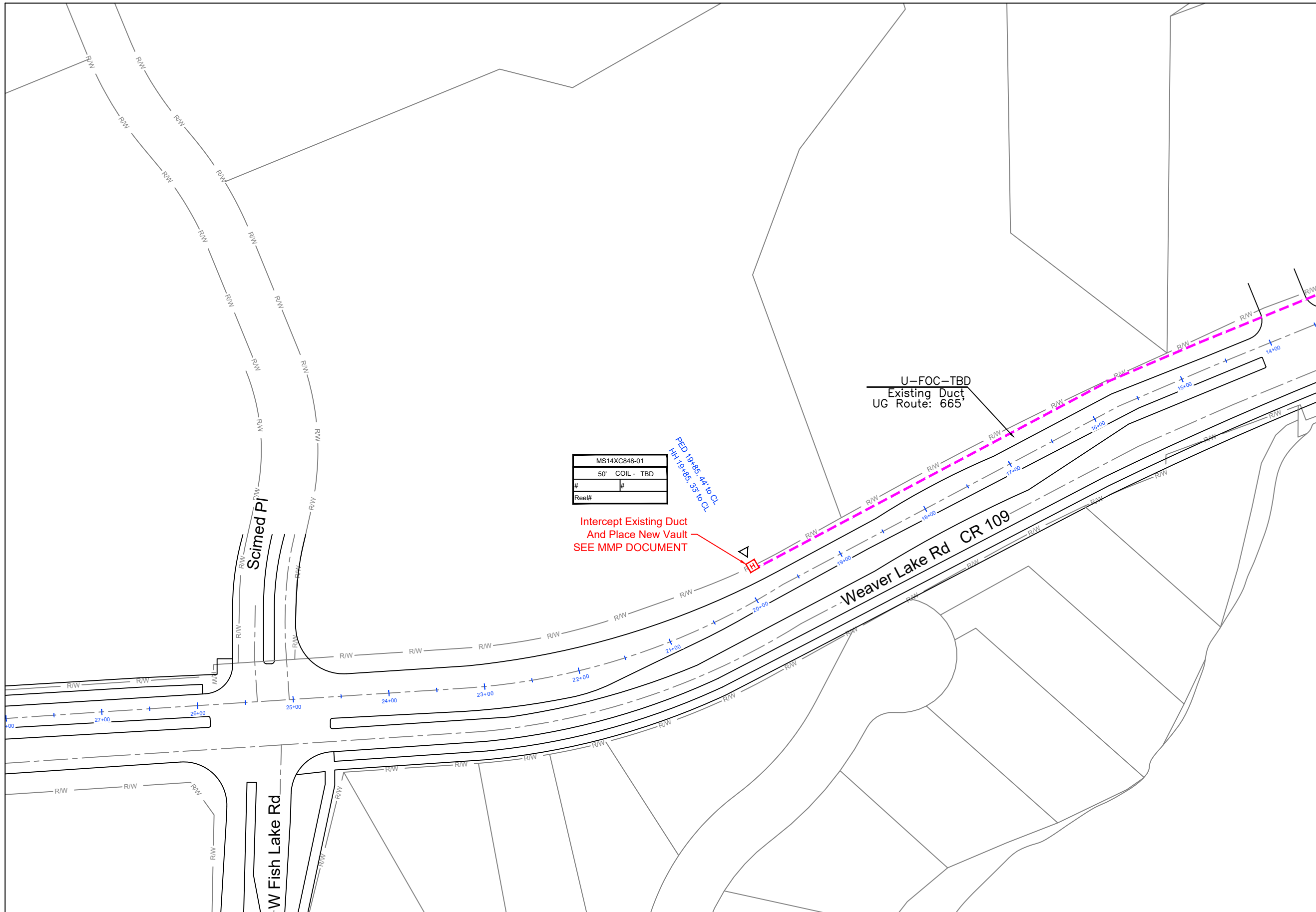
GSOC

GOPHER STATE ONE CALL
1-800-252-1116
www.gopherstateonecall.org

Prepared by:

Perham, MN 218-346-3600
TrustCompass.com

MS14XC848-01



MS14XC848-01
50' COIL - TBD
#
Reel#



1" = 100'

Route	MS14XC848
City	Maple Grove
County	Hennepin
Filename	MN009-90 MS14XC848
Work Order #	MN009-90 MS14XC848



5005 Cheshire Pkwy, Suite 1
Plymouth, MN 55446

TRACKING

Staked By:	BA	8/22/2019
Drafted By:	MRT	9/6/2019
Project Manager	Aaron Zierden	
As-Built By:	-	-
Revision	Rev #1 - -	

MS14XC848-01

GSOC

GOPHER STATE ONE CALL
1-800-252-1116
www.gopherstateonecall.org

Prepared by:



MS14XC848-02