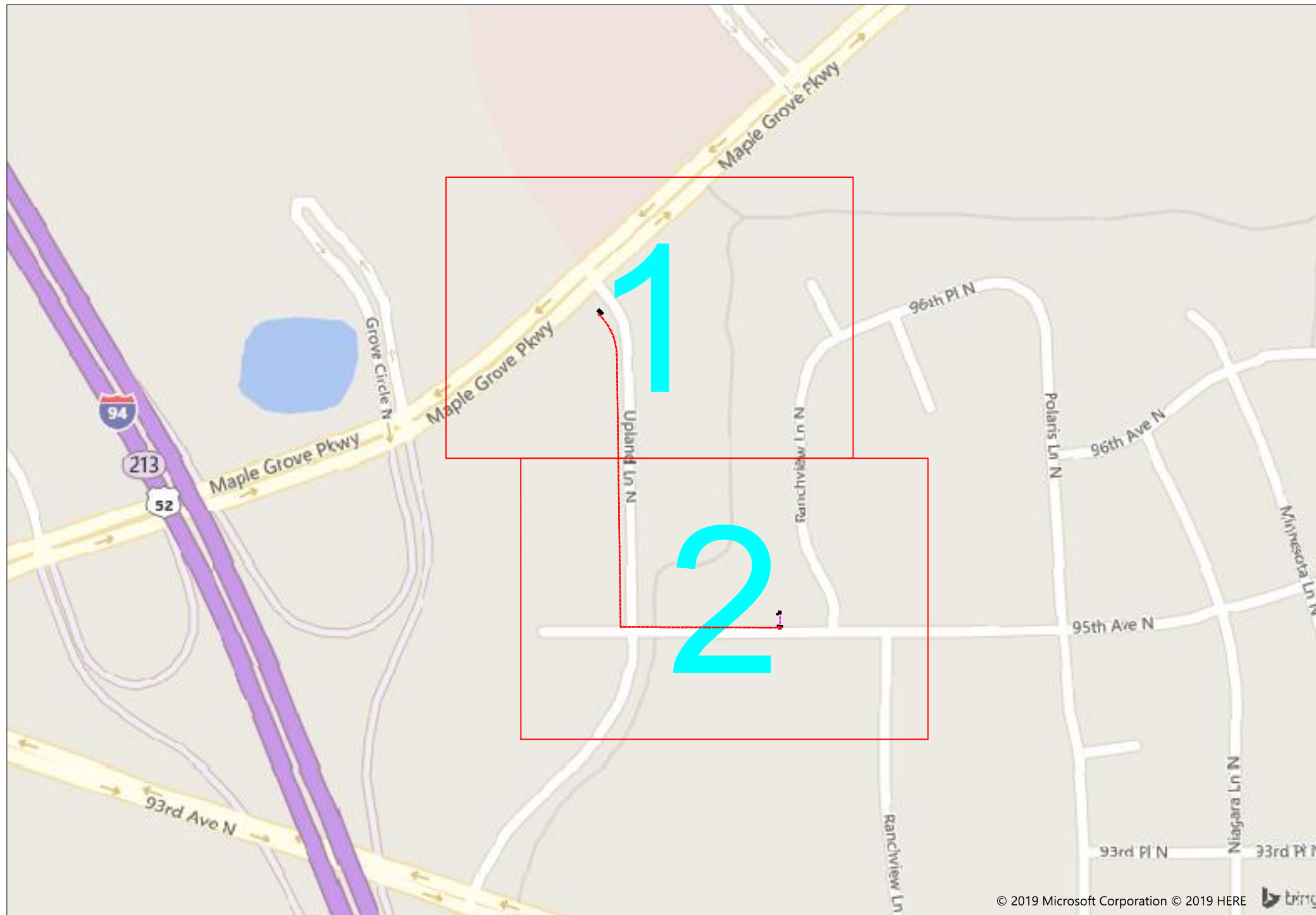


#69305A CMG LLC DBA Cambria Hotel



9655 Grove Circle North, Maple Grove, MN



1" = -

Route	Cambria Additional Route
City	Maple Grove
County	Hennepin
Filename	69305A Cambria Hotel
Work Order #	69305A

arvig
 160 2nd St SW
 Perham, MN 56573
 (218) 346-5500

TRACKING	
Staked By:	BA 8/27/2019
Drafted By:	CH/MRT 9/11/2019
Project Manager	Randy Anderson
As-Built By:	-
Revision	Rev #1 -

Construction Totals	
Route Footage	1680
Total Underground	1680
Total Aerial	0
Underground (New)	1628
Aerial (New)	0
Overpull (Ex Duct)	52
Overlash (Ex Strand)	0
Plow	0
Bore	1628
New Vaults	1
New Peds	0

GSOC
 GOPHER STATE ONE CALL
 1-800-252-1116
 www.gopherstateonecall.org

Prepared by:
compass
 consultants inc.
 Perham, MN 218-346-3600
 TrustCompass.com

Overall

Legend

Fiber Linetypes

	Proposed Underground Fiber - Bore
	Proposed Underground Fiber - Plow
	Proposed UG Fiber in Existing Duct
	Existing Underground Fiber
	Proposed Aerial Fiber
	Proposed Aerial Overlash
	Existing Aerial Fiber
	Proposed Aerial Strand
	Existing Aerial Strand

Other Linetypes

	Rail Road
	Fence
	Storm Sewer
	Sanitary Sewer
	Gas Line
	Tele./Comm. Line
	Water Line
	Electric Line
	Street light/Traffic signal
	District Cooling
	District Heating
	Force Main
	Other Utility or Unknown
	Utility Easement

Abbreviations

CL - Center Line
R/W - Right of Way
BOC - Back of Curb
FC - Front of Curb
EOR - Edge of Road
S/W - Sidewalk
HH - Handhole
MH - Manhole

Symbols

	Proposed Handhole
	Existing Handhole
	Reference Handhole
	Manhole
	Proposed Splice Point
	Existing Splice Point
	Power Pole
	Proposed Slack Coil
	Existing Slack Coil
	Proposed Anchor/Down Guy
	Existing Anchor/Down Guy
	Proposed Riser
	Existing Riser
	Aerial Bond
	Aerial Ground
	BM53T - Fiber Marker
	BM53 - Fiber Marker
	Tree
	Street Light
	Traffic Light
	Proposed PED
	Existing PED
	Proposed Splice Case
	Existing Splice Case

Construction Totals

Route Footage	1680
Total Underground	1680
Total Aerial	0
Underground (New)	1628
Aerial (New)	0
Overpull (Ex Duct)	52
Overlash (Ex Strand)	0
Plow	0
Bore	1628
New Vaults	1
New Peds	0

Fiber

TBD Fiber	0
12 Fiber	0
24 Fiber	0
36 Fiber	0
48 Fiber	1905
72 Fiber	0
96 Fiber	0
144 Fiber	0
288 Fiber	0
12 Dielectric Fiber	0
24 Dielectric Fiber	0
36 Dielectric Fiber	0
48 Dielectric Fiber	0
72 Dielectric Fiber	0
96 Dielectric Fiber	0
144 Dielectric Fiber	0
288 Dielectric Fiber	0

Materials

Duct (1.25")	3256
Vault(Small)	0
Vault (Medium)	1
Vault (Large)	0
PED BD5	0
Warning Sign	0
Locate Terminal	1
Ground Rod	1
Strand	0



1" = -

Route	Cambria Additional Route
City	Maple Grove
County	Hennepin
Filename	699305A Cambria Hotel
Work Order #	69305A

160 2nd St SW
Perham, MN 56573
(218) 346-5500

TRACKING

Staked By:	BA	8/27/2019
Drafted By:	CH/MRT	9/11/2019
Project Manager	Randy Anderson	
As-Built By:	-	-
Revision	Rev #1	-

GSOC

GOPHER STATE ONE CALL
1-800-252-1116
www.gopherstateonecall.org

Prepared by:

Perham, MN 218-346-3600
TrustCompass.com

Legend

Existing Access Points



Existing Zayo Vault



1" = -

Route	Cambria Additional Route
City	Maple Grove
County	Hennepin
Filename	699305A Cambria Hotel
Work Order #	69305A



160 2nd St SW
Perham, MN 56573
(218) 346-5500

TRACKING

Staked By:	
BA	8/27/2019
Drafted By:	
CH/MRT	9/11/2019
Project Manager	Randy Anderson
As-Built By:	-
Revision	
Rev #1	-

GSOC

GOPHER STATE ONE CALL
1-800-252-1116
www.gopherstateonecall.org

Prepared by:



Perham, MN 218-346-3600
TrustCompass.com

Existing AP



69305A-02



1" = 100'

Route	Cambria Additional Route
City	Maple Grove
County	Hennepin
Filename	699305A Cambria Hotel
Work Order #	69305A

arvig

160 2nd St SW
 Perham, MN 56573
 (218) 346-5500

TRACKING	
Staked By:	BA 8/27/2019
Drafted By:	CH/MRT 9/11/2019
Project Manager	Randy Anderson
As-Built By:	-
Revision	Rev #1 -

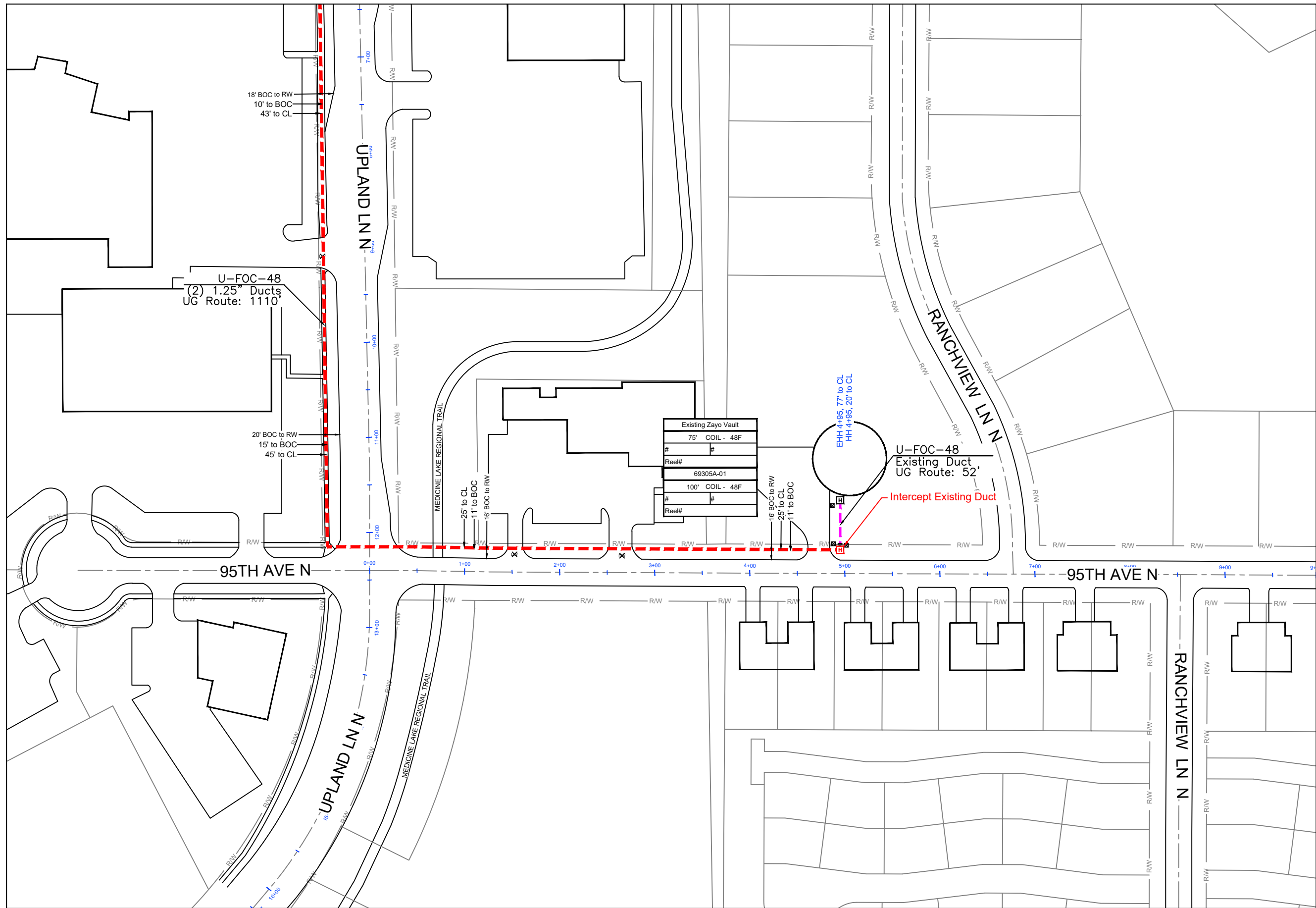
GSOC
 GOPHER STATE ONE CALL
 1-800-252-1116
 www.gopherstateonecall.org

Prepared by:

compass
 consultants inc.
 Perham, MN 218-346-3600
 TrustCompass.com

69305A-01

69305A-01



1" = 100'

Route
Cambria Additional Route

City
Maple Grove

County
Hennepin

Filename
699305A Cambria Hotel

Work Order #
69305A



160 2nd St SW
Perham, MN 56573
(218) 346-5500

TRACKING

Staked By:
BA 8/27/2019

Drafted By:
CH/MRT 9/11/2019

Project Manager
Randy Anderson

As-Built By:
-

Revision
Rev #1 -

GSOC

GOPHER STATE ONE CALL
1-800-252-1116
www.gopherstateonecall.org

Prepared by:



Perham, MN 218-346-3600
TrustCompass.com

69305A-02