



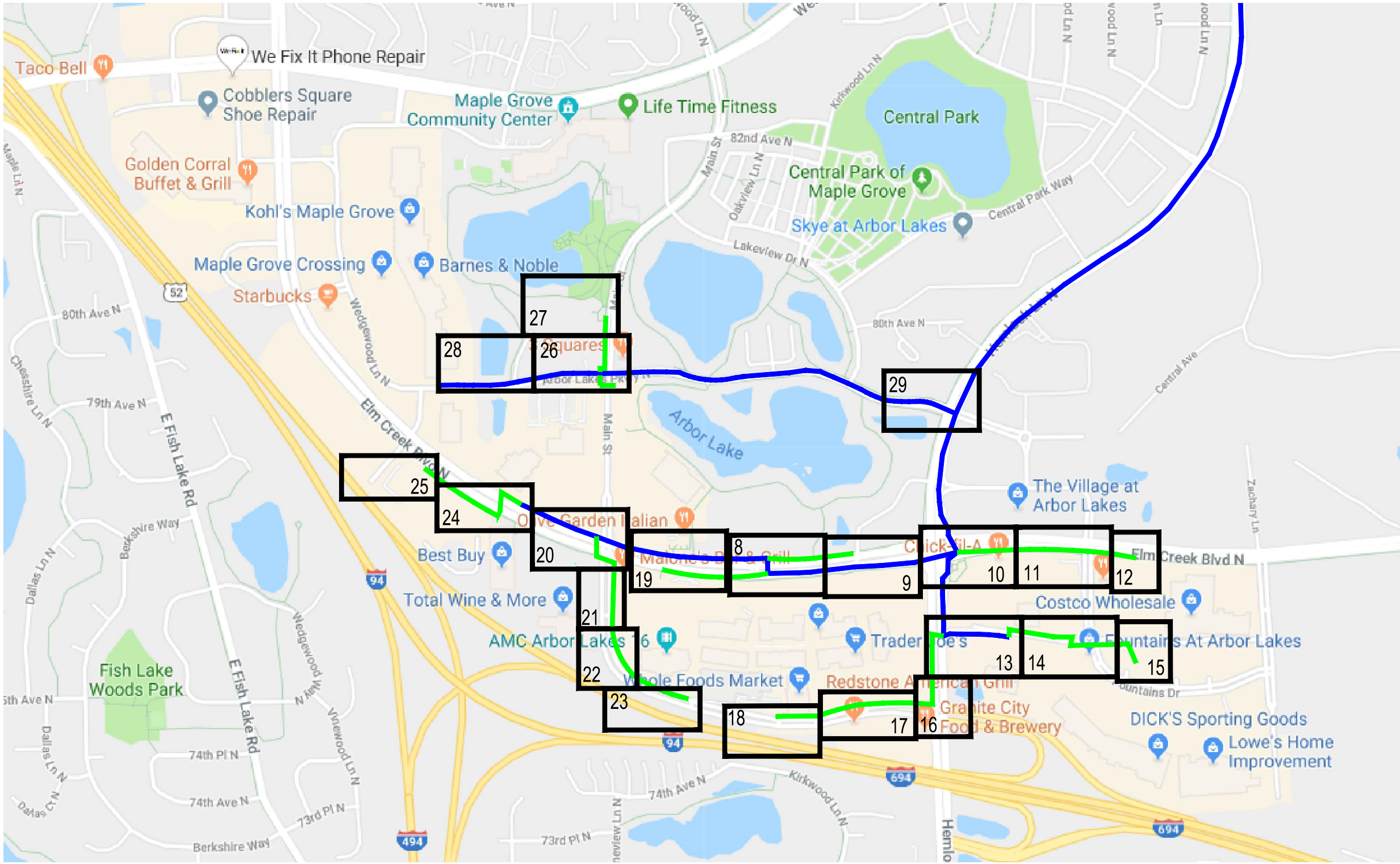
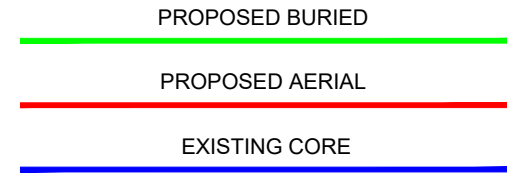
MCImetro  
ACCESS TRANSMISSION SERVICES CORP  
D/B/A VERIZON ACCESS TRANSMISSION  
OUTSIDE PLANT CONSTRUCTION  
FIBER OPTIC CABLE ROUTE

**H1004**

SITE CODE: HENNMN  
BH03 / ALEXANDER\_M / H1004  
MAPLE GROVE, MN

PROJECT STATUS: ISSUED FOR PERMITTING  
STATUS DATE: 8/29/19

# LOCATION MAP



**MCI**

PROJECT: H1004

ALEXANDER\_M

MAPLE GROVE, MN

CLARIFICATION NO.	QUANTITY

MCI  
ACCESS TRANSMISSION SERVICES, LLC  
OUTSIDE PLANT CONSTRUCTION  
TITLE: FIBER OPTIC CABLE ROUTE  
H1004

DATE: 8/29/19  
 ENGINEER: MB  
 DRAWN BY: MB

REVISIONS		
DATE	DESCRIPTION	INITIAL
8/2/19	Construction Package	MB
8/2/19	QC	RLB

EXCEPT AS MAY BE OTHERWISE PROVIDED BY CONTRACT, THESE DRAWINGS AND SPECIFICATIONS SHALL REMAIN THE PROPERTY OF MCI COMMUNICATIONS SERVICES, INC. BOTH BEING ISSUED IN STRICT CONFIDENCE AND SHALL NOT BE REPRODUCED, COPIED, OR USED FOR ANY PURPOSE WITHOUT SPECIFIC WRITTEN PERMISSION.

SCALE

HORIZONTAL:	NTS
VERTICAL:	NTS

MP \_\_\_\_\_ TO MP \_\_\_\_\_

SHEET 3 OF 29

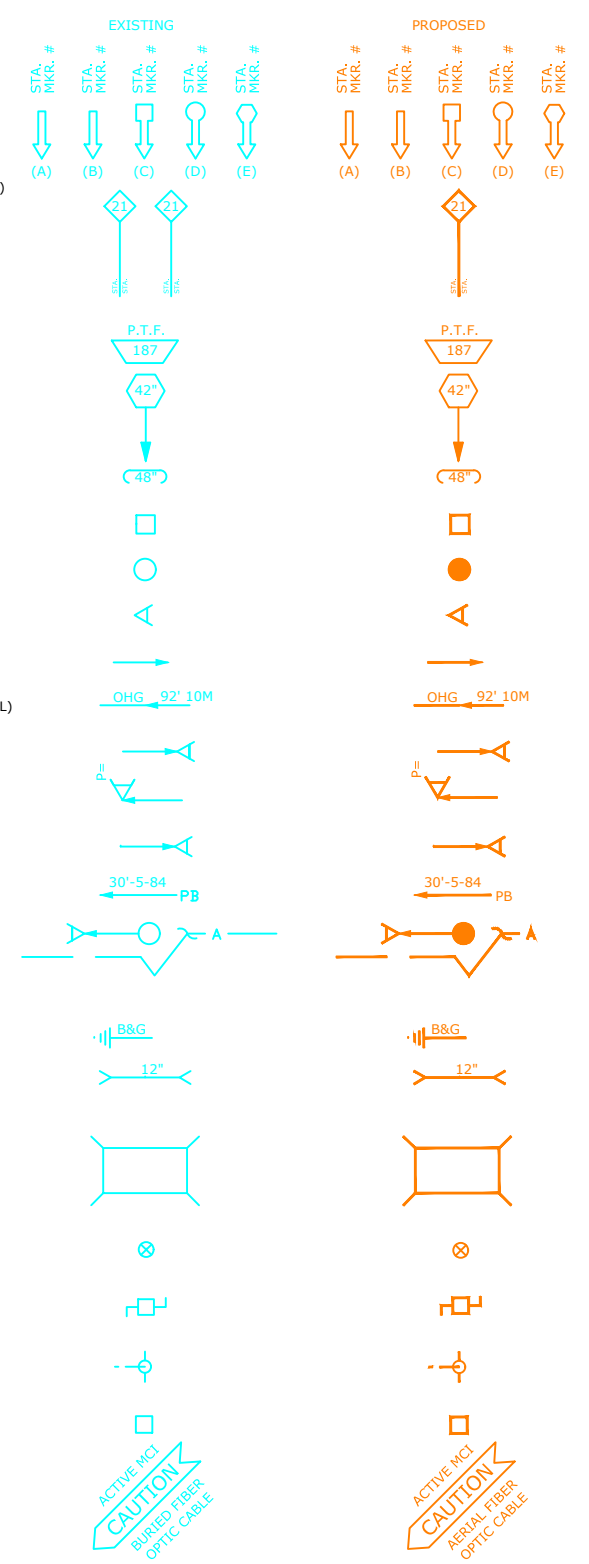
FILE: H1004.DWG

# SYMBOLS KEY

	EXISTING	PROPOSED
BURIED CABLE		
AERIAL CABLE		
SUBMARINE CABLE		
FOGWIRE CABLE		
DIRECT BURIED HDPE		
PVC OR SPLIT PVC CONDUIT		
BSP/GSP OR SPLIT BSP/GSP CONDUIT		
STEEL CASING		
REMOVE AND RESTORE ASPHALT OR CONCRETE (WIDTH AS INDICATED)		
CORE BORE		
JACK AND BORE		
DIRECTIONAL BORE		
FUTURE CABLE		
REMOVE CABLE		
TO BE REMOVED OR ABANDONED (SHOWN FOR HDPE)		
AERIAL UTILITY (ELECTRIC)		
UNDERGROUND UTILITY (TELEPHONE)		
MAIN TRACKS		
AUXILLARY TRACKS		
CENTERLINE		
RIGHT-OF-WAY		
EDGE OF PAVEMENT		
SIDEWALK		
DITCH LINE		
TAX DISTRICT		
CITY, COUNTY OR STATE BOUNDARY LINE		
PROPERTY LINE		
FENCE LINE		
GUARDRAIL		
TOP OF SLOPE		
TOE OF SLOPE		
FACE OF CURB		
PROPOSED FIBER IN EXISTING DUCT		
PROPOSED FIBER AND DUCT		
PROPOSED DUCT		
MST TAIL		
EXISTING MCI		

DISTRICT ENERGY	
GAS	
WATER	
TELEPHONE	
ELECTRIC	
SANITARY SEWER (SEW)	
STORM DRAIN	
FENCE	
CABLE TV	
STEAM	
OIL	
UNKNOWN UTILITY	
RIGHT OF WAY	
FACE OF CURB	
STREET LT/TRAFFIC SIGNAL	
EDGE OF PAVEMENT	
MST - PROPOSED	
HANDHOLE - EXISTING	
HANDHOLE - PROPOSED	
MANHOLE - EXISTING	
MANHOLE - PROPOSED	
SPLICE CASE - EXISTING	
SPLICE CASE - PROPOSED	
SITE CALLOUT - PROPOSED	
AERIAL STORAGE - EXISTING	
AERIAL STORAGE - PROPOSED	
FDH - PROPOSED	
POWER PEDESTAL	
TELE PHONE PEDESTAL	
CABLE PEDESTAL	

STEEL MARKER AND SIGN-(A)	
ALUMINUM "HUB"-STYLE MARKER-(B)	
FLAT MARKER-(C)	
TUBULAR MARKER-(D)	
TUBULAR MARKER, & ISOLATOR PROTECTOR-(E)	
MILE POST MARKER NOTE: DASHED = NOT FOUND IN FIELD	
PERMIT TRACKING FORM IDENTIFIER	
ROCK PROBE (DEPTH AS INDICATED)	
UTILITY COVER DEPTH	
HANDHOLE, MANHOLE OR PULLBOX	
POLE	
ANCHOR ONLY	
GUY ONLY	
OVERHEAD GUY (ARROW IN DIRECTION OF PULL)	
ANCHOR AND GUY	
SIDEWALK ANCHOR AND GUY	
FOREIGN ANCHOR AND GUY	
PUSH BRACE (EXISTING POLE)	
ACCOUNT CODE CHANGE (BURIED TO AERIAL)	
BOND AND GROUND	
CULVERT (SIZE AS INDICATED)	
BRIDGE	
WATER METER	
GAS VALVE	
FIRE HYDRANT	
RAILROAD SIGNAL CONTROL BOX	
CAUTION NOTE	
FIBER CALL OUTS	



**U-FOC-48**  
 FH/BH = CORE FRONT HAUL / BACK HAUL STRAND ASSIGNMENT  
 F1 = ODN FEEDER STRAND ASSIGNMENT  
 F2 = ODN DISTRIBUTION STRAND ASSIGNMENT  
 XD = DEAD STRANDS  
 VAC = STRAND NOT YET ASSIGNED

CLARIFICATION NO.	QUANTITY

MCI  
**ACCESS TRANSMISSION SERVICES, LLC**  
 OUTSIDE PLANT CONSTRUCTION  
 TITLE: FIBER OPTIC CABLE ROUTE  
 H1004

**DATE:** 8/29/19  
**ENGINEER:** MB  
**DRAWN BY:** MB

REVISIONS		
DATE	DESCRIPTION	INITIAL
8/2/19	Construction Package	MB
8/2/19	QC	RLB

**SCALE**

**HORIZONTAL:** NTS  
**VERTICAL:** NTS

MP      TO MP     

**SHEET** 6 **OF** 29

**FILE:** H1004.DWG

EXCEPT AS MAY BE OTHERWISE PROVIDED BY CONTRACT, THESE DRAWINGS AND SPECIFICATIONS SHALL REMAIN THE PROPERTY OF MCI COMMUNICATIONS SERVICES, INC., BOTH BEING ISSUED IN STRICT CONFIDENCE AND SHALL NOT BE REPRODUCED, COPIED, OR USED FOR ANY PURPOSE WITHOUT SPECIFIC WRITTEN PERMISSION.



PROJECT: H1004

ALEXANDER\_M

MAPLE GROVE, MN

CLARIFICATION NO. QUANTITY

CLARIFICATION NO.	QUANTITY

ACCESS TRANSMISSION SERVICES, LLC



OUTSIDE PLANT CONSTRUCTION

TITLE: FIBER OPTIC CABLE ROUTE

H1004

DATE: 8/29/19

ENGINEER: MB

DRAWN BY: MB

REVISIONS

DATE	DESCRIPTION	INITIAL
8/2/19	Construction Package	MB
8/2/19	QC	RLB

EXCEPT AS MAY BE OTHERWISE PROVIDED BY CONTRACT, THESE DRAWINGS AND SPECIFICATIONS SHALL REMAIN THE PROPERTY OF MCI COMMUNICATIONS SERVICES, INC., BOTH BEING ISSUED IN STRICT CONFIDENCE AND SHALL NOT BE REPRODUCED, COPIED, OR USED FOR ANY PURPOSE WITHOUT SPECIFIC WRITTEN PERMISSION.

SCALE

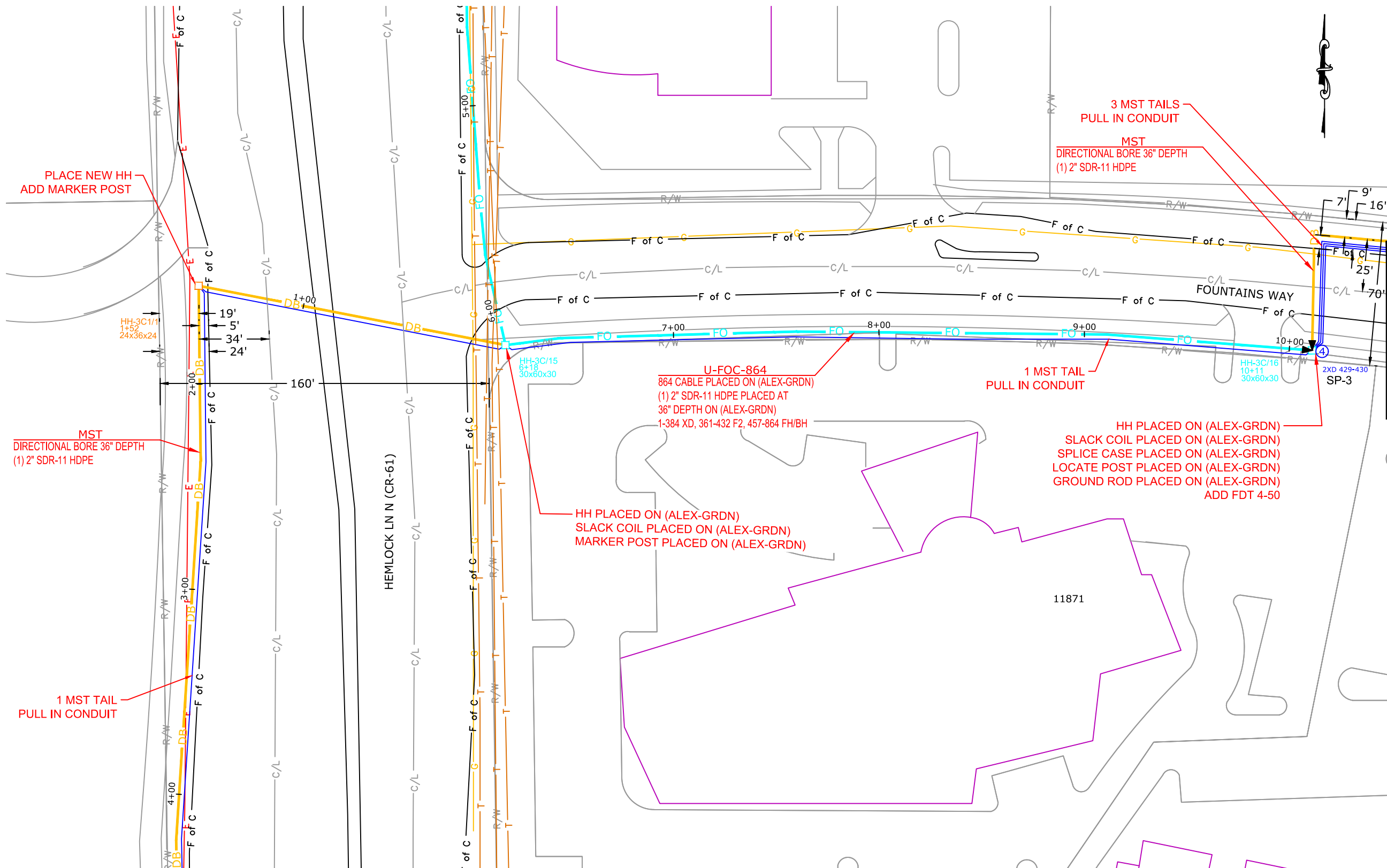
HORIZONTAL: 1"=50'

VERTICAL: 1"=50'

MP TO MP

SHEET 13 OF 29

FILE: H1004



MATCH TO SHEET 16

MATCH TO SHEET 14





**PROJECT:** H1004  
 ALEXANDER\_M  
 MAPLE GROVE, MN

**CLARIFICATION NO.**   **QUANTITY**

CLARIFICATION NO.	QUANTITY

MCImetro  
 ACCESS TRANSMISSION SERVICES, LLC  
  
 OUTSIDE PLANT CONSTRUCTION  
 TITLE: FIBER OPTIC CABLE ROUTE  
 H1004

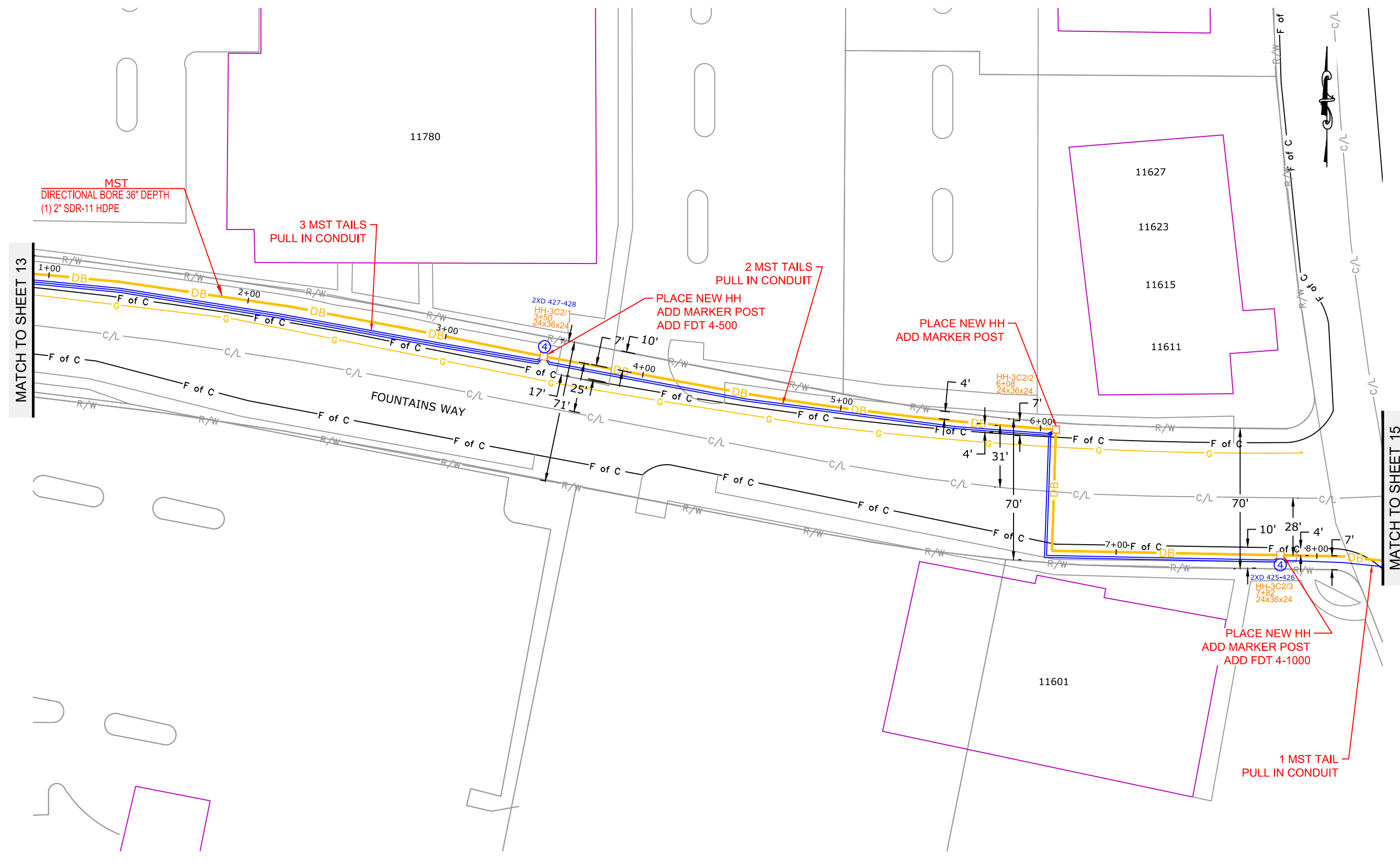
**DATE:** 8/29/19  
**ENGINEER:** MB  
**DRAWN BY:** MB

**REVISIONS**

DATE	DESCRIPTION	INITIAL
8/2/19	Construction Package	MB
8/2/19	QC	RLB

EXCEPT AS MAY BE OTHERWISE PROVIDED BY CONTRACT, THESE DRAWINGS AND SPECIFICATIONS SHALL REMAIN THE PROPERTY OF MCI COMMUNICATIONS SERVICES, INC., BOTH BEING ISSUED IN STRICT CONFIDENCE AND SHALL NOT BE REPRODUCED, COPIED, OR USED FOR ANY PURPOSE WITHOUT SPECIFIC WRITTEN PERMISSION.

**SCALE**  
**HORIZONTAL:** 1"=50'  
**VERTICAL:** 1"=50'  
 MP \_\_\_\_\_ TO MP \_\_\_\_\_  
**SHEET** 14 **OF** 29  
**FILE:** H1004



MATCH TO SHEET 13

MATCH TO SHEET 15



**PROJECT:** H1004  
 ALEXANDER\_M  
 MAPLE GROVE, MN

CLARIFICATION NO.	QUANTITY

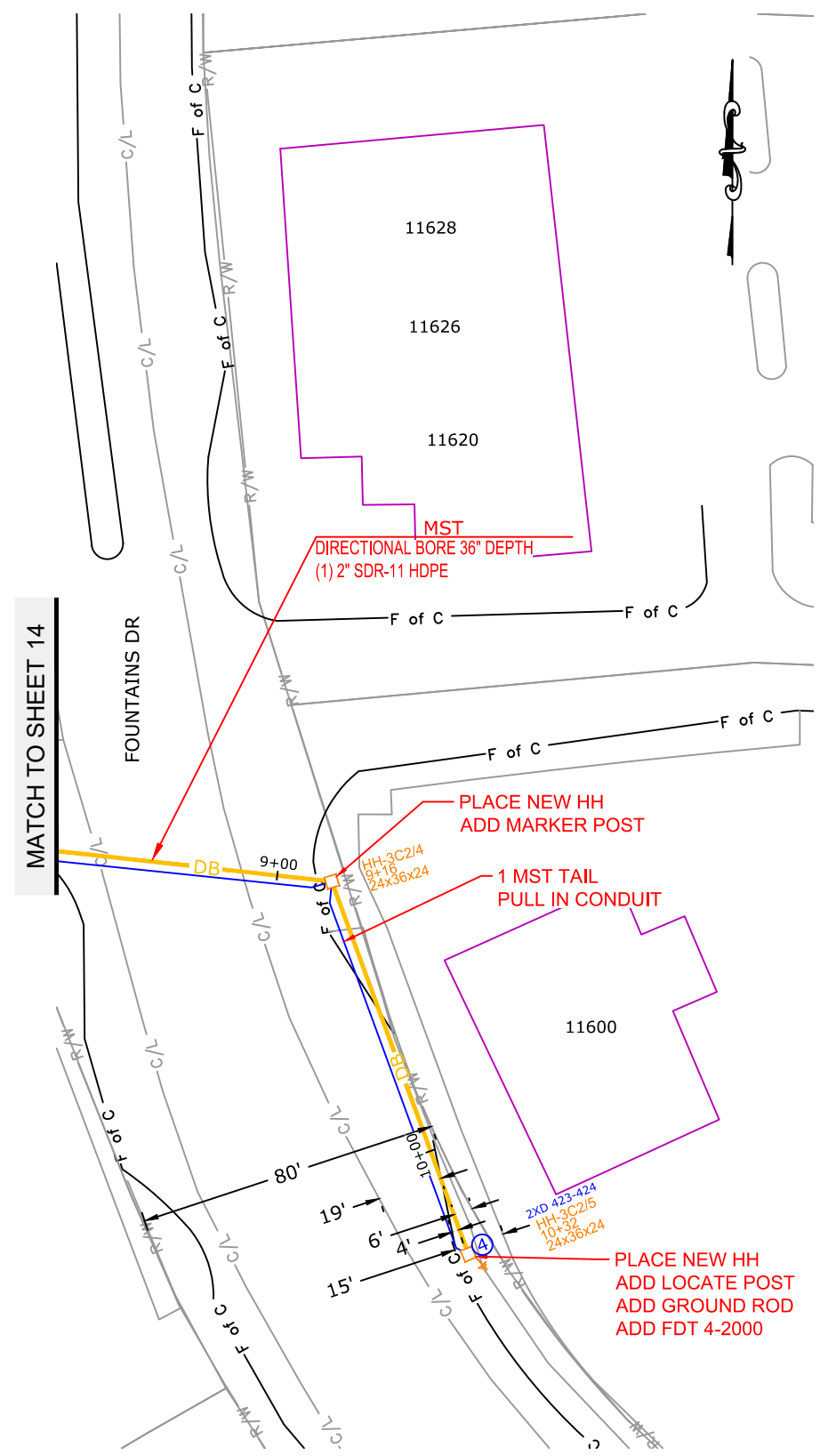
MCImetro  
 ACCESS TRANSMISSION SERVICES, LLC  
**MCI**  
 OUTSIDE PLANT CONSTRUCTION  
 TITLE: FIBER OPTIC CABLE ROUTE  
 H1004

**DATE:** 8/29/19  
**ENGINEER:** MB  
**DRAWN BY:** MB

REVISIONS		
DATE	DESCRIPTION	INITIAL
8/2/19	Construction Package	MB
8/2/19	QC	RLB

EXCEPT AS MAY BE OTHERWISE PROVIDED BY CONTRACT, THESE DRAWINGS AND SPECIFICATIONS SHALL REMAIN THE PROPERTY OF MCI COMMUNICATIONS SERVICES, INC., BOTH BEING ISSUED IN STRICT CONFIDENCE AND SHALL NOT BE REPRODUCED, COPIED, OR USED FOR ANY PURPOSE WITHOUT SPECIFIC WRITTEN PERMISSION.

**SCALE**  
**HORIZONTAL:** 1"=50'  
**VERTICAL:** 1"=50'  
 MP \_\_\_\_\_ TO MP \_\_\_\_\_  
**SHEET 15 OF 29**  
**FILE:** H1004





PROJECT: H1004

ALEXANDER\_M

MAPLE GROVE, MN

CLARIFICATION NO. QUANTITY

CLARIFICATION NO.	QUANTITY

MCImetro  
**ACCESS TRANSMISSION SERVICES, LLC**  
**MCI**  
 OUTSIDE PLANT CONSTRUCTION  
 TITLE: FIBER OPTIC CABLE ROUTE  
 H1004

DATE: 8/29/19

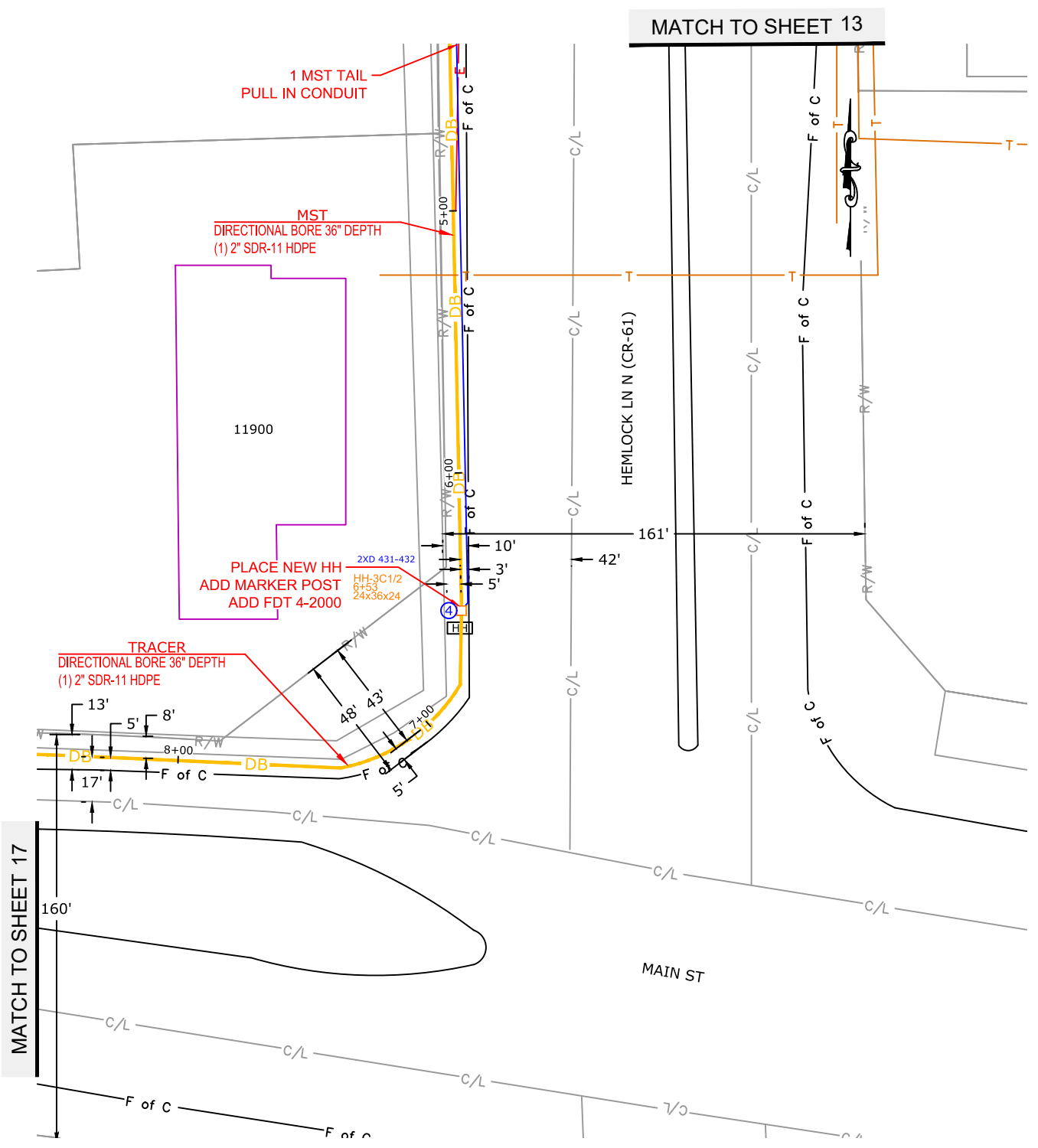
ENGINEER: MB

DRAWN BY: MB

REVISIONS		
DATE	DESCRIPTION	INITIAL
8/2/19	Construction Package	MB
8/2/19	QC	RLB

EXCEPT AS MAY BE OTHERWISE PROVIDED BY CONTRACT, THESE DRAWINGS AND SPECIFICATIONS SHALL REMAIN THE PROPERTY OF MCI COMMUNICATIONS SERVICES, INC., BOTH BEING ISSUED IN STRICT CONFIDENCE AND SHALL NOT BE REPRODUCED, COPIED, OR USED FOR ANY PURPOSE WITHOUT SPECIFIC WRITTEN PERMISSION.

**SCALE**  
 HORIZONTAL: 1"=50'  
 VERTICAL: 1"=50'  
 MP \_\_\_\_\_ TO MP \_\_\_\_\_  
 SHEET 16 OF 29  
 FILE: H1004





PROJECT: H1004

ALEXANDER\_M

MAPLE GROVE, MN

CLARIFICATION NO. QUANTITY

CLARIFICATION NO.	QUANTITY

MCImetro  
ACCESS TRANSMISSION SERVICES, LLC



OUTSIDE PLANT CONSTRUCTION

TITLE: FIBER OPTIC CABLE ROUTE

H1004

DATE: 8/29/19

ENGINEER: MB

DRAWN BY: MB

REVISIONS

DATE	DESCRIPTION	INITIAL
8/2/19	Construction Package	MB
8/2/19	QC	RLB

EXCEPT AS MAY BE OTHERWISE PROVIDED BY CONTRACT, THESE DRAWINGS AND SPECIFICATIONS SHALL REMAIN THE PROPERTY OF MCI COMMUNICATIONS SERVICES, INC., BOTH BEING ISSUED IN STRICT CONFIDENCE AND SHALL NOT BE REPRODUCED, COPIED, OR USED FOR ANY PURPOSE WITHOUT SPECIFIC WRITTEN PERMISSION.

SCALE

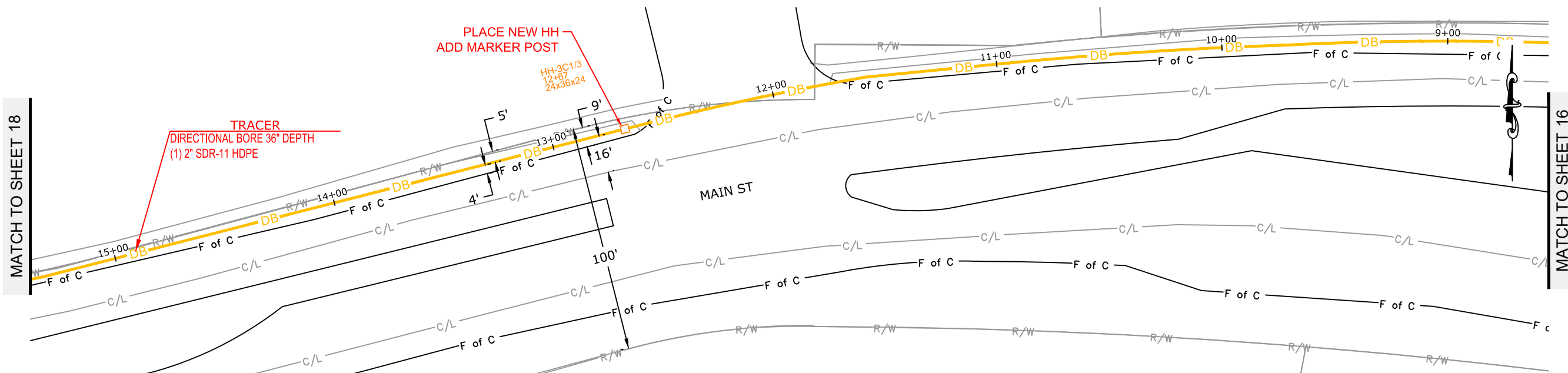
HORIZONTAL: 1"=50'

VERTICAL: 1"=50'

MP      TO MP     

SHEET 17 OF 29

FILE: H1004



MATCH TO SHEET 18

MATCH TO SHEET 16





PROJECT: H1004

ALEXANDER\_M

MAPLE GROVE, MN

CLARIFICATION NO. QUANTITY

CLARIFICATION NO.	QUANTITY

MCI metro  
 ACCESS TRANSMISSION SERVICES, LLC  
 OUTSIDE PLANT CONSTRUCTION  
 TITLE: FIBER OPTIC CABLE ROUTE  
 H1004

DATE: 8/29/19

ENGINEER: MB

DRAWN BY: MB

REVISIONS

DATE	DESCRIPTION	INITIAL
8/2/19	Construction Package	MB
8/2/19	QC	RLB

EXCEPT AS MAY BE OTHERWISE PROVIDED BY CONTRACT, THESE DRAWINGS AND SPECIFICATIONS SHALL REMAIN THE PROPERTY OF MCI COMMUNICATIONS SERVICES, INC., BOTH BEING ISSUED IN STRICT CONFIDENCE AND SHALL NOT BE REPRODUCED, COPIED, OR USED FOR ANY PURPOSE WITHOUT SPECIFIC WRITTEN PERMISSION.

SCALE

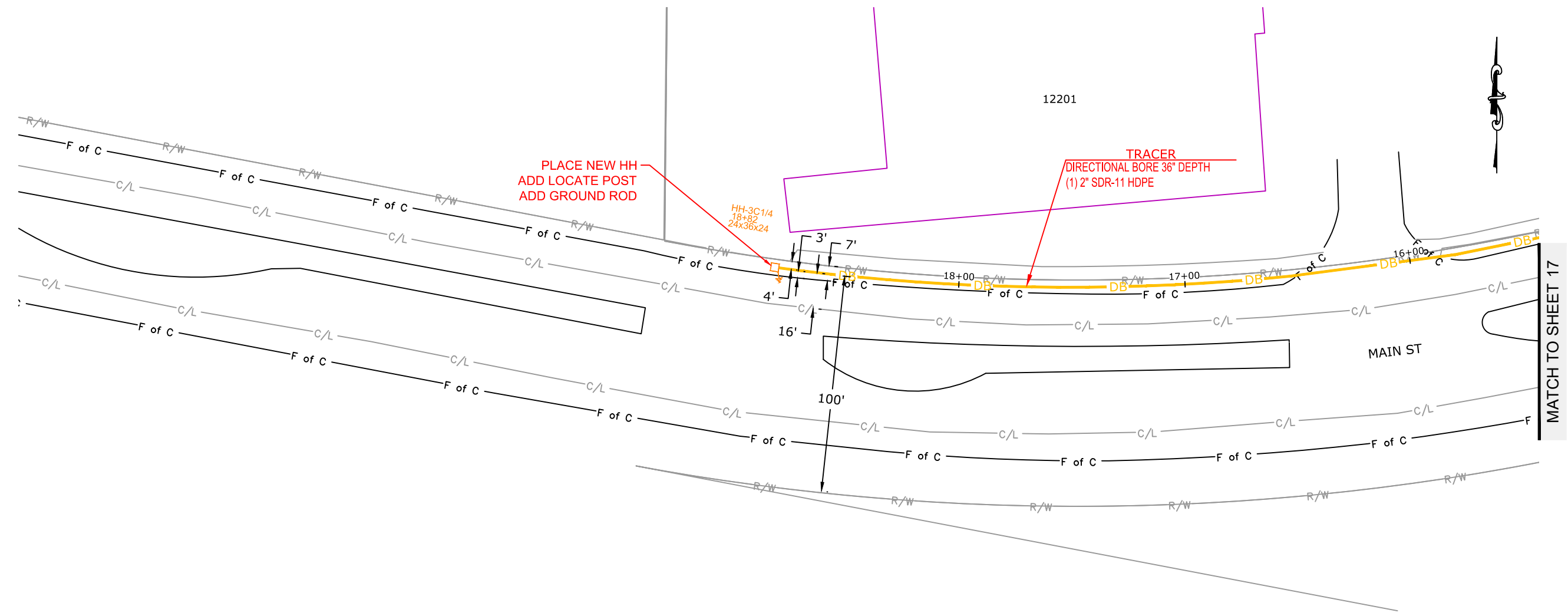
HORIZONTAL: 1"=50'

VERTICAL: 1"=50'

MP \_\_\_\_\_ TO MP \_\_\_\_\_

SHEET 18 OF 29

FILE: H1004



MATCH TO SHEET 17



PROJECT: H1004

ALEXANDER\_M

MAPLE GROVE, MN

CLARIFICATION NO. QUANTITY

CLARIFICATION NO.	QUANTITY

MCI  
ACCESS TRANSMISSION SERVICES, LLC  
OUTSIDE PLANT CONSTRUCTION  
TITLE: FIBER OPTIC CABLE ROUTE  
H1004

DATE: 8/29/19

ENGINEER: MB

DRAWN BY: MB

REVISIONS

DATE	DESCRIPTION	INITIAL
8/2/19	Construction Package	MB
8/2/19	QC	RLB

EXCEPT AS MAY BE OTHERWISE PROVIDED BY CONTRACT, THESE DRAWINGS AND SPECIFICATIONS SHALL REMAIN THE PROPERTY OF MCI COMMUNICATIONS SERVICES, INC., BOTH BEING ISSUED IN STRICT CONFIDENCE AND SHALL NOT BE REPRODUCED, COPIED, OR USED FOR ANY PURPOSE WITHOUT SPECIFIC WRITTEN PERMISSION.

SCALE

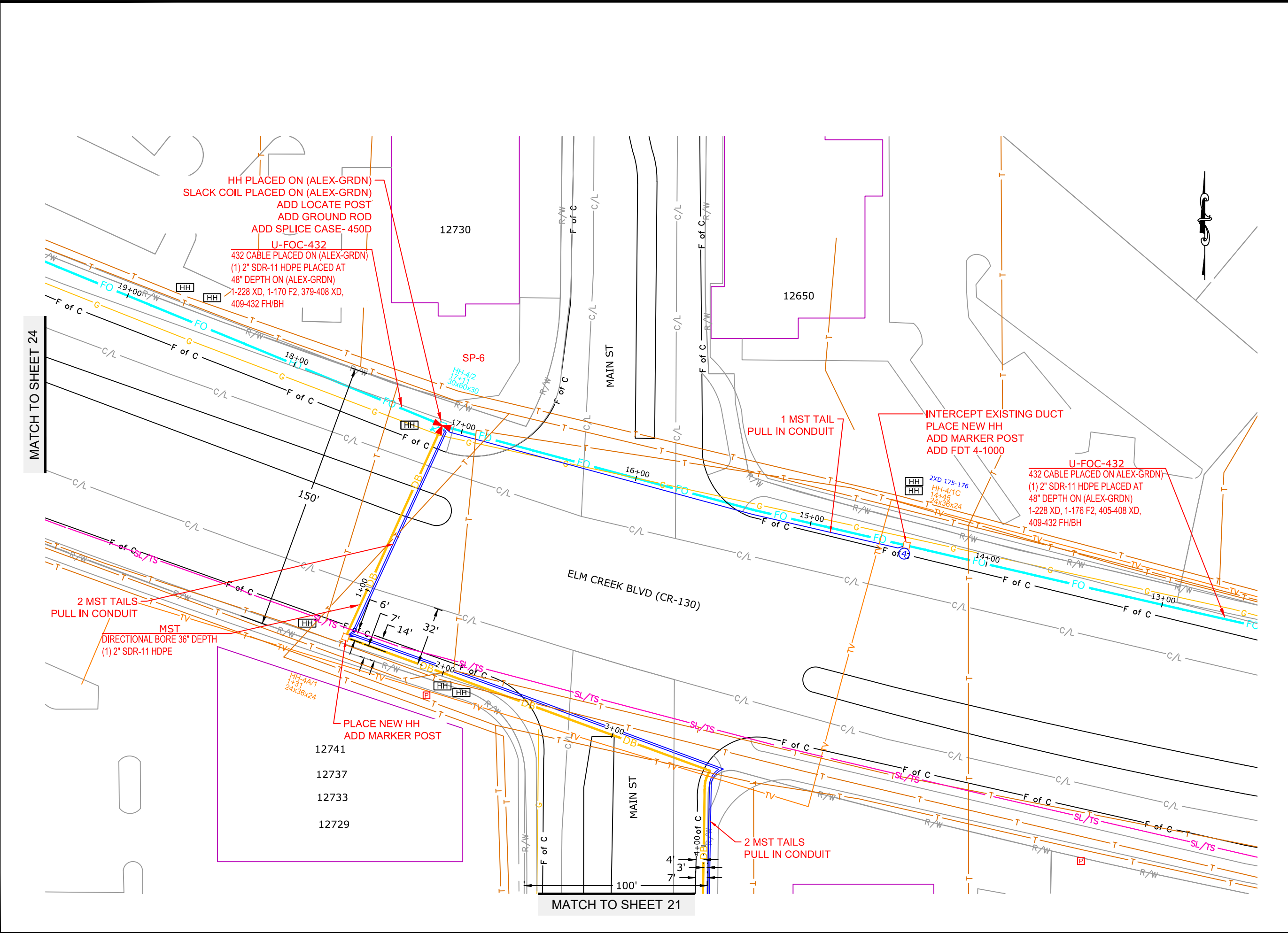
HORIZONTAL: 1"=50'

VERTICAL: 1"=50'

MP TO MP

SHEET 20 OF 29

FILE: H1004





PROJECT: H1004  
 ALEXANDER\_M  
 MAPLE GROVE, MN

CLARIFICATION NO.	QUANTITY

MCImetro  
 ACCESS TRANSMISSION SERVICES, LLC  
**MCI**  
 OUTSIDE PLANT CONSTRUCTION  
 TITLE: FIBER OPTIC CABLE ROUTE  
 H1004

DATE: 8/29/19  
 ENGINEER: MB  
 DRAWN BY: MB

REVISIONS		
DATE	DESCRIPTION	INITIAL
8/2/19	Construction Package	MB
8/2/19	QC	RLB

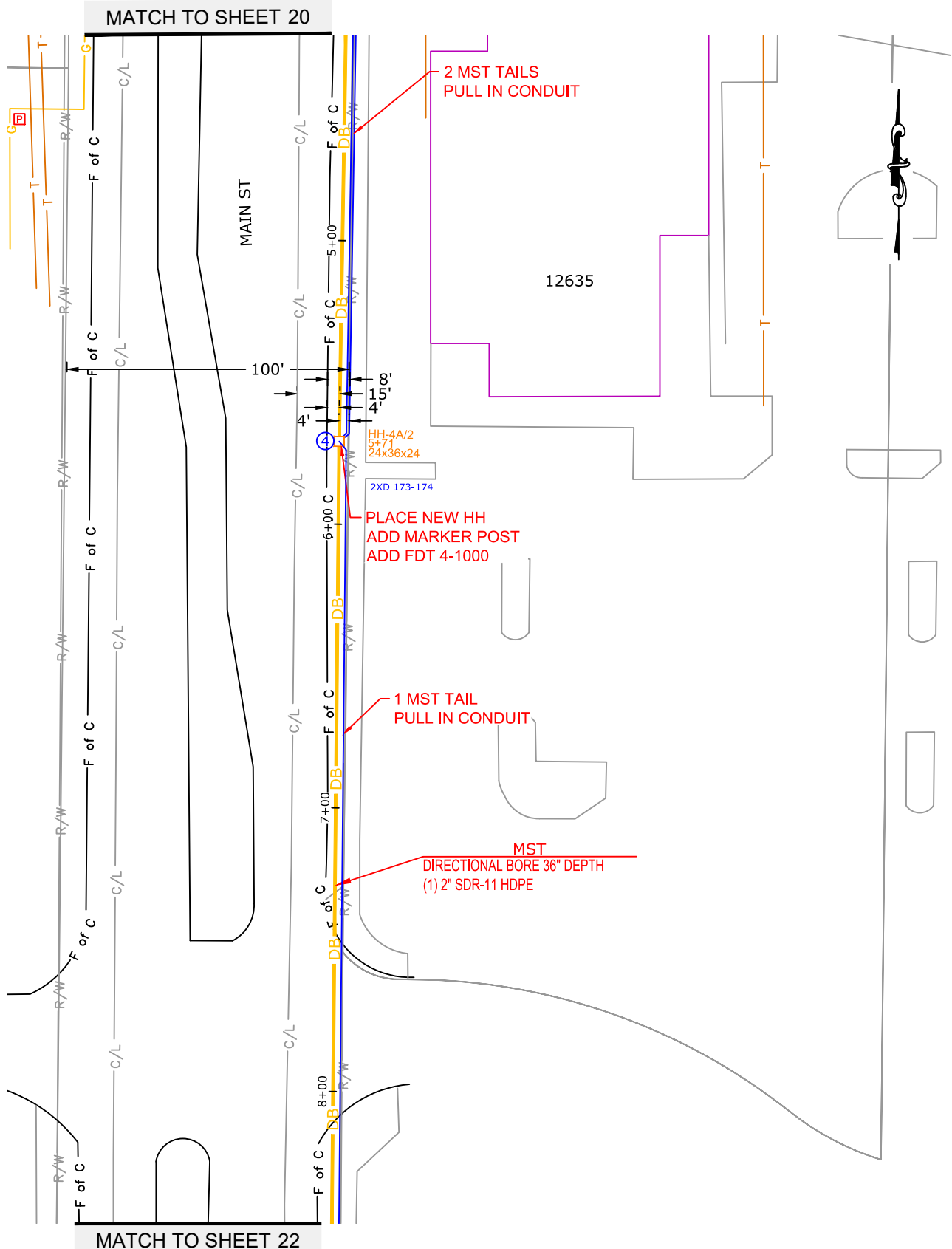
EXCEPT AS MAY BE OTHERWISE PROVIDED BY CONTRACT, THESE DRAWINGS AND SPECIFICATIONS SHALL REMAIN THE PROPERTY OF MCI COMMUNICATIONS SERVICES, INC., BOTH BEING ISSUED IN STRICT CONFIDENCE AND SHALL NOT BE REPRODUCED, COPIED, OR USED FOR ANY PURPOSE WITHOUT SPECIFIC WRITTEN PERMISSION.

SCALE

HORIZONTAL: 1"=50'  
 VERTICAL: 1"=50'

MP \_\_\_\_\_ TO MP \_\_\_\_\_  
 SHEET 21 OF 29

FILE: H1004





PROJECT: H1004

ALEXANDER\_M

MAPLE GROVE, MN

CLARIFICATION NO. QUANTITY

CLARIFICATION NO.	QUANTITY

MCImetro  
ACCESS TRANSMISSION SERVICES, LLC



OUTSIDE PLANT CONSTRUCTION

TITLE: FIBER OPTIC CABLE ROUTE

H1004

DATE: 8/29/19

ENGINEER: MB

DRAWN BY: MB

REVISIONS

DATE	DESCRIPTION	INITIAL
8/2/19	Construction Package	MB
8/2/19	QC	RLB

EXCEPT AS MAY BE OTHERWISE PROVIDED BY CONTRACT, THESE DRAWINGS AND SPECIFICATIONS SHALL REMAIN THE PROPERTY OF MCI COMMUNICATIONS SERVICES, INC., BOTH BEING ISSUED IN STRICT CONFIDENCE AND SHALL NOT BE REPRODUCED, COPIED, OR USED FOR ANY PURPOSE WITHOUT SPECIFIC WRITTEN PERMISSION.

SCALE

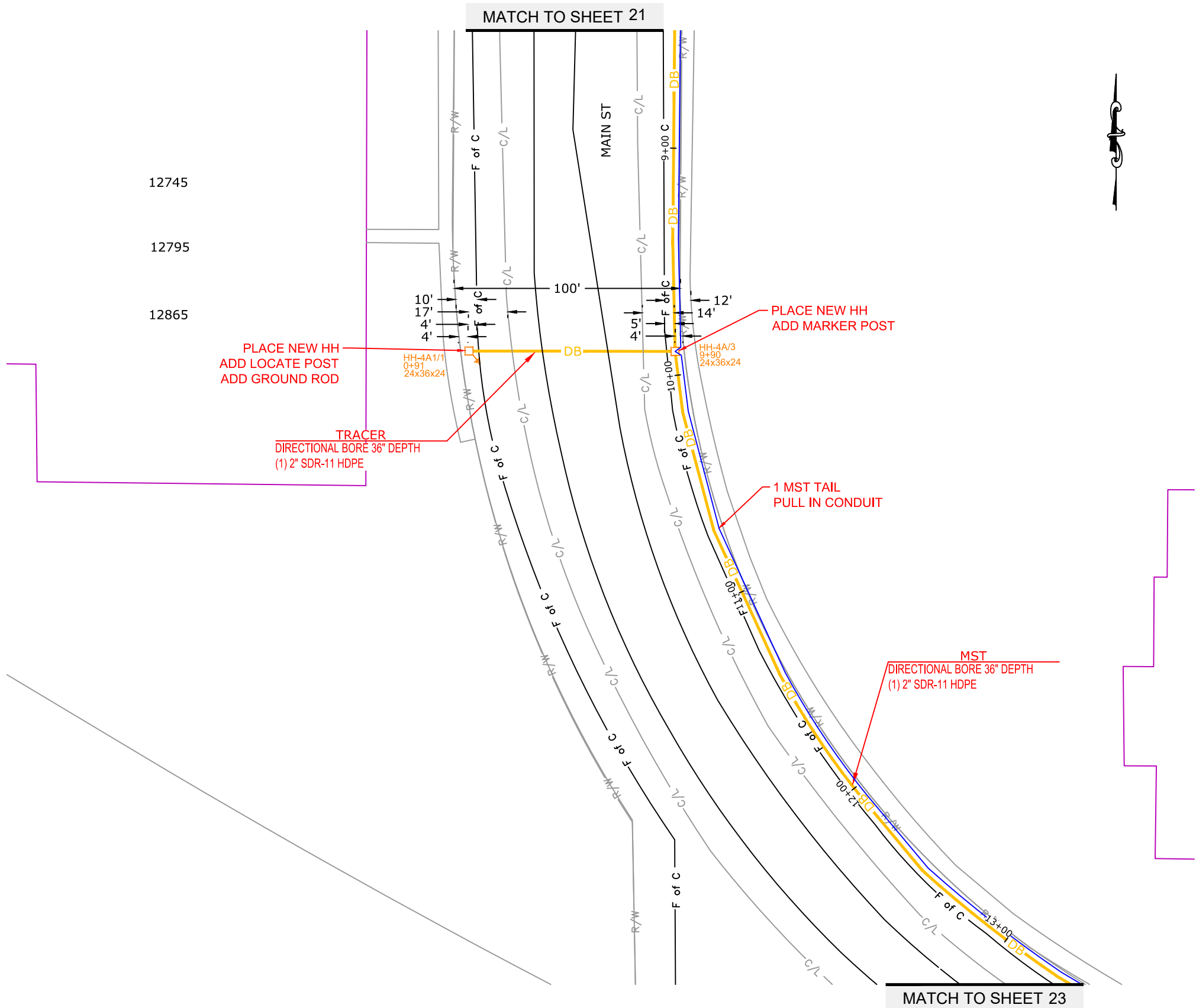
HORIZONTAL: 1"=50'

VERTICAL: 1"=50'

MP TO MP

SHEET 22 OF 29

FILE: H1004



MATCH TO SHEET 21

MATCH TO SHEET 23



PROJECT: H1004

ALEXANDER\_M

MAPLE GROVE, MN

CLARIFICATION NO.	QUANTITY

MCImetro  
ACCESS TRANSMISSION SERVICES, LLC



OUTSIDE PLANT CONSTRUCTION  
TITLE: FIBER OPTIC CABLE ROUTE

H1004

DATE: 8/29/19

ENGINEER: MB

DRAWN BY: MB

**REVISIONS**

DATE	DESCRIPTION	INITIAL
8/2/19	Construction Package	MB
8/2/19	QC	RLB

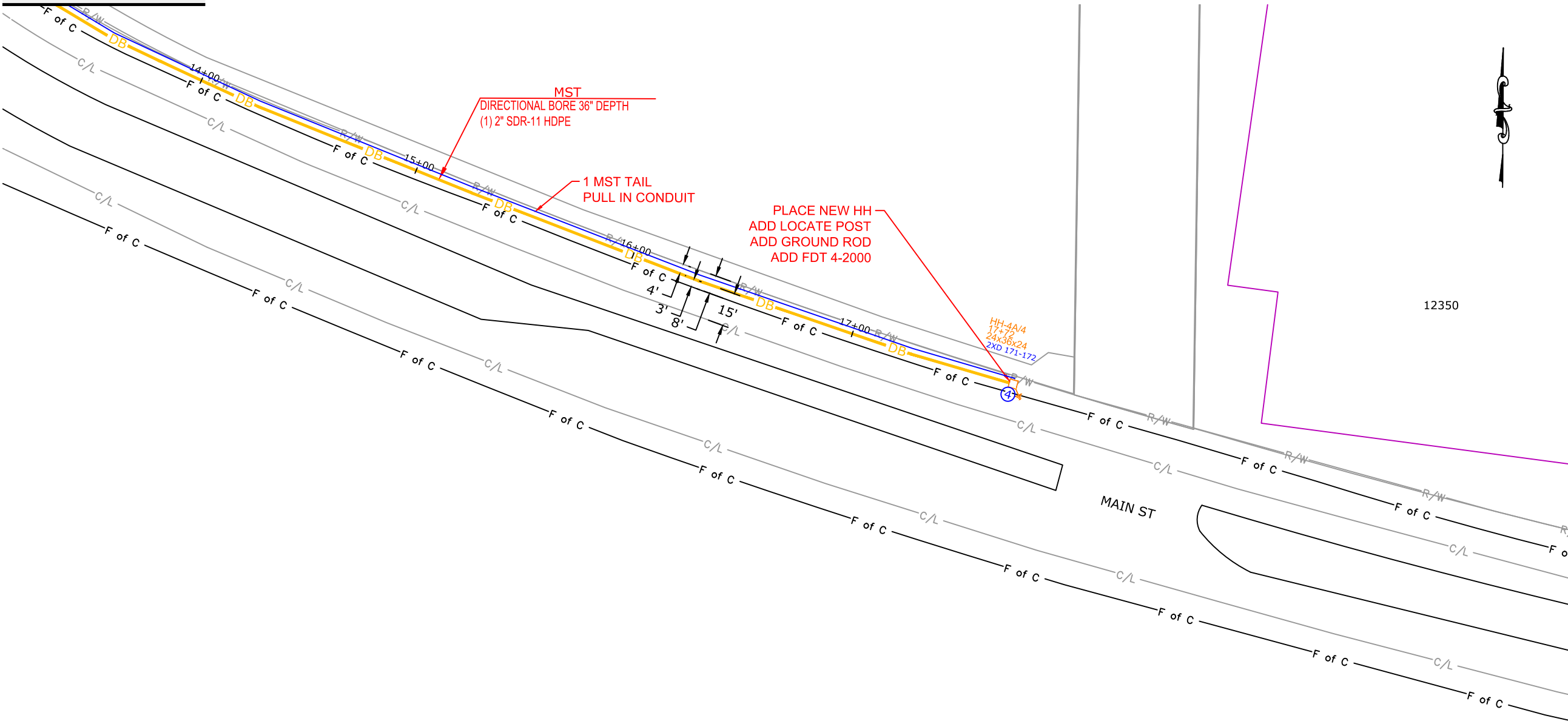
EXCEPT AS MAY BE OTHERWISE PROVIDED BY CONTRACT, THESE DRAWINGS AND SPECIFICATIONS SHALL REMAIN THE PROPERTY OF MCI COMMUNICATIONS SERVICES, INC., BOTH BEING ISSUED IN STRICT CONFIDENCE AND SHALL NOT BE REPRODUCED, COPIED, OR USED FOR ANY PURPOSE WITHOUT SPECIFIC WRITTEN PERMISSION.

**SCALE**  
HORIZONTAL: 1"=50'  
VERTICAL: 1"=50'

MP \_\_\_\_\_ TO MP \_\_\_\_\_  
SHEET 23 OF 29

FILE: H1004

MATCH TO SHEET 22



12350

MAIN ST

HH-4A/4  
17+72  
24x36x24  
2XD 171-172

MST  
DIRECTIONAL BORE 36" DEPTH  
(1) 2" SDR-11 HDPE

1 MST TAIL  
PULL IN CONDUIT

PLACE NEW HH  
ADD LOCATE POST  
ADD GROUND ROD  
ADD FDT 4-2000

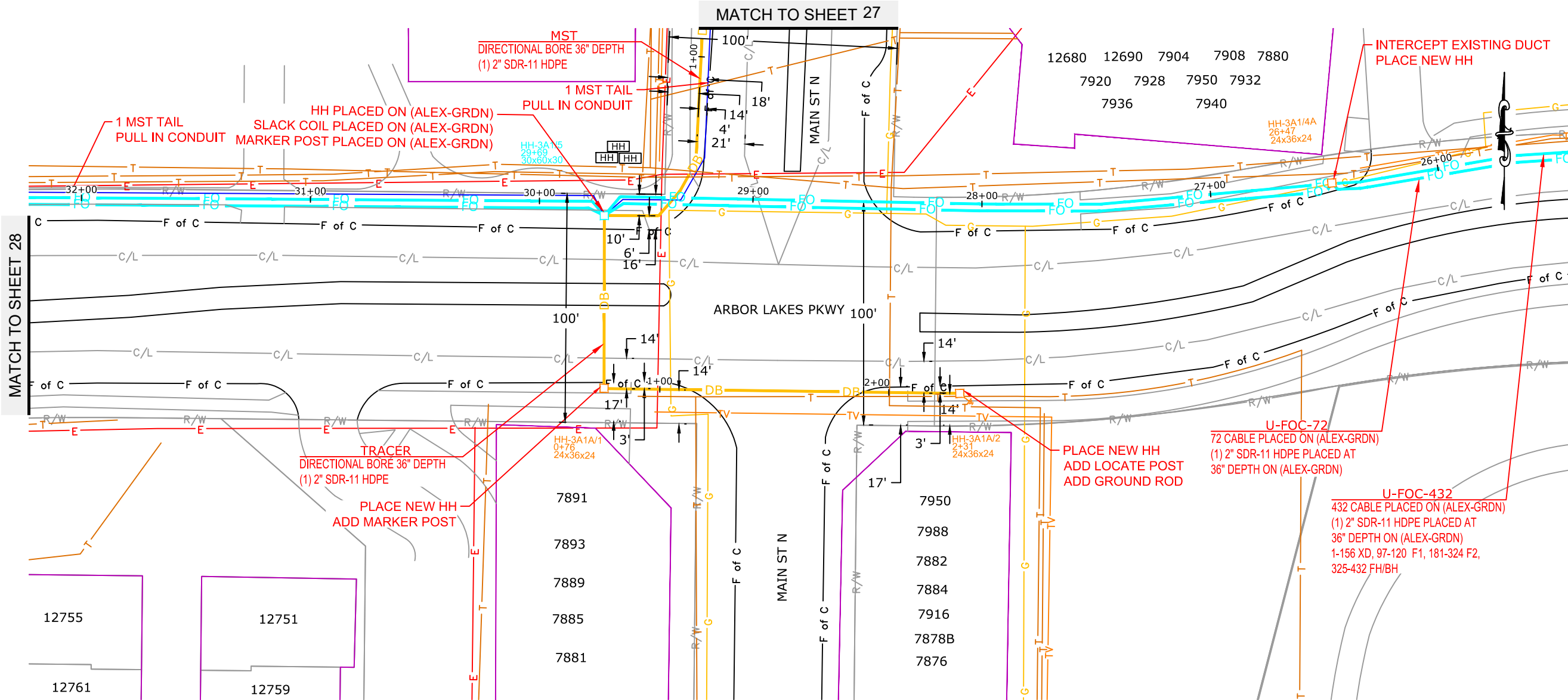


PROJECT: H1004

ALEXANDER\_M

MAPLE GROVE, MN

CLARIFICATION NO.	QUANTITY



MCI metro  
 ACCESS TRANSMISSION SERVICES, LLC  
  
 OUTSIDE PLANT CONSTRUCTION  
 TITLE: FIBER OPTIC CABLE ROUTE  
 H1004

DATE: 8/29/19

ENGINEER: MB

DRAWN BY: MB

REVISIONS

DATE	DESCRIPTION	INITIAL
8/2/19	Construction Package	MB
8/2/19	QC	RLB

EXCEPT AS MAY BE OTHERWISE PROVIDED BY CONTRACT, THESE DRAWINGS AND SPECIFICATIONS SHALL REMAIN THE PROPERTY OF MCI COMMUNICATIONS SERVICES, INC., BOTH BEING ISSUED IN STRICT CONFIDENCE AND SHALL NOT BE REPRODUCED, COPIED, OR USED FOR ANY PURPOSE WITHOUT SPECIFIC WRITTEN PERMISSION.

SCALE  
 HORIZONTAL: 1"=50'  
 VERTICAL: 1"=50'  
 MP \_\_\_\_\_ TO MP \_\_\_\_\_  
 SHEET 26 OF 29  
 FILE: H1004





PROJECT: H1004

ALEXANDER\_M

MAPLE GROVE, MN

CLARIFICATION NO.	QUANTITY

MCImetro  
ACCESS TRANSMISSION SERVICES, LLC

OUTSIDE PLANT CONSTRUCTION  
TITLE: FIBER OPTIC CABLE ROUTE  
H1004

DATE: 8/29/19

ENGINEER: MB

DRAWN BY: MB

REVISIONS

DATE	DESCRIPTION	INITIAL
8/2/19	Construction Package	MB
8/2/19	QC	RLB

EXCEPT AS MAY BE OTHERWISE PROVIDED BY CONTRACT, THESE DRAWINGS AND SPECIFICATIONS SHALL REMAIN THE PROPERTY OF MCI COMMUNICATIONS SERVICES, INC., BOTH BEING ISSUED IN STRICT CONFIDENCE AND SHALL NOT BE REPRODUCED, COPIED, OR USED FOR ANY PURPOSE WITHOUT SPECIFIC WRITTEN PERMISSION.

SCALE

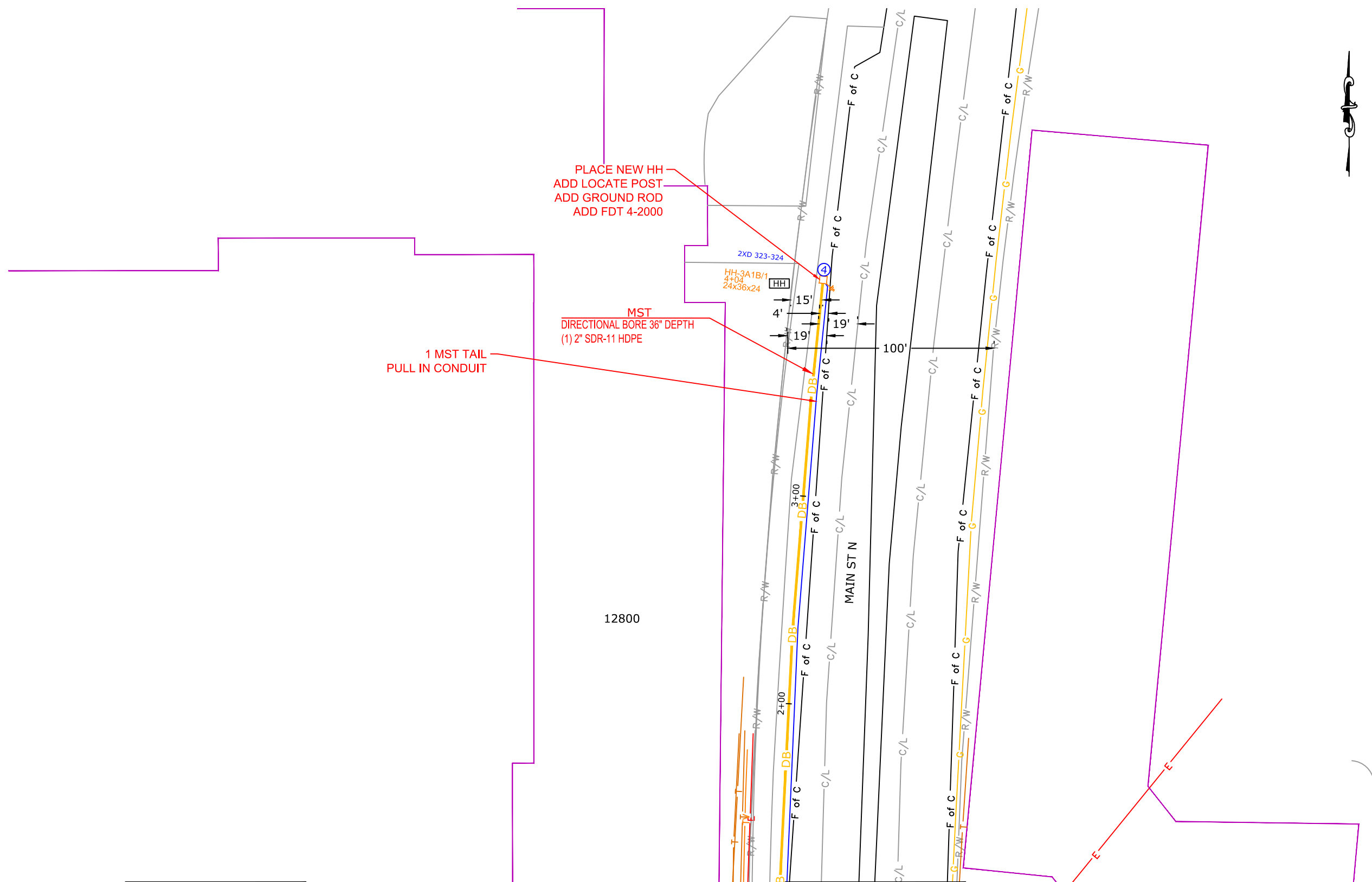
HORIZONTAL: 1"=50'

VERTICAL: 1"=50'

MP \_\_\_\_\_ TO MP \_\_\_\_\_

SHEET 27 OF 29

FILE: H1004



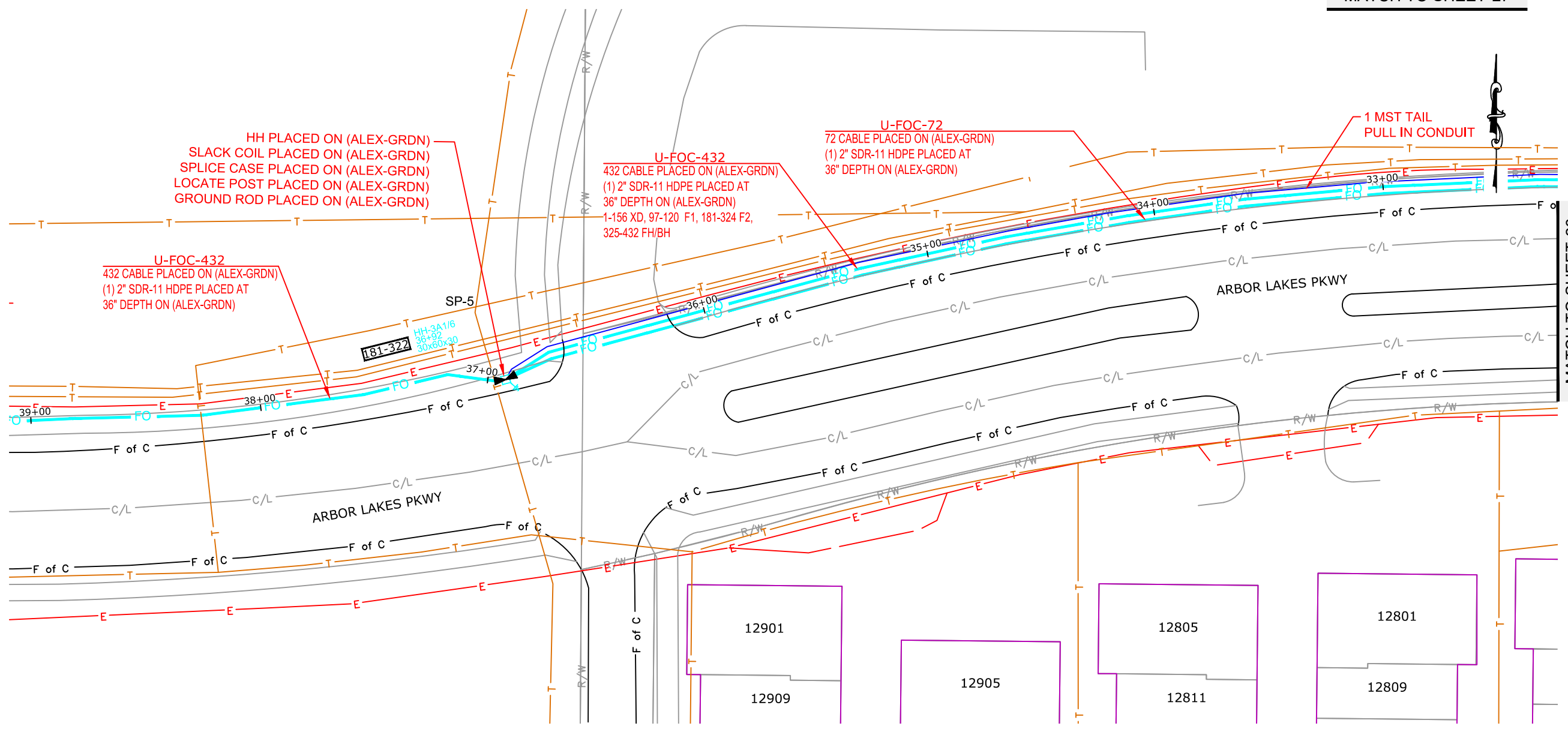


PROJECT: H1004

ALEXANDER\_M

MAPLE GROVE, MN

MATCH TO SHEET 27



MATCH TO SHEET 26

MCImetro  
ACCESS TRANSMISSION SERVICES, LLC  
OUTSIDE PLANT CONSTRUCTION  
TITLE: FIBER OPTIC CABLE ROUTE  
H1004

DATE: 8/29/19

ENGINEER: MB

DRAWN BY: MB

REVISIONS		
DATE	DESCRIPTION	INITIAL
8/2/19	Construction Package	MB
8/2/19	QC	RLB

EXCEPT AS MAY BE OTHERWISE PROVIDED BY CONTRACT, THESE DRAWINGS AND SPECIFICATIONS SHALL REMAIN THE PROPERTY OF MCI COMMUNICATIONS SERVICES, INC., BOTH BEING ISSUED IN STRICT CONFIDENCE AND SHALL NOT BE REPRODUCED, COPIED, OR USED FOR ANY PURPOSE WITHOUT SPECIFIC WRITTEN PERMISSION.

SCALE  
HORIZONTAL: 1"=50'  
VERTICAL: 1"=50'  
MP \_\_\_\_\_ TO MP \_\_\_\_\_  
SHEET 28 OF 29  
FILE: H1004