



MCImetro

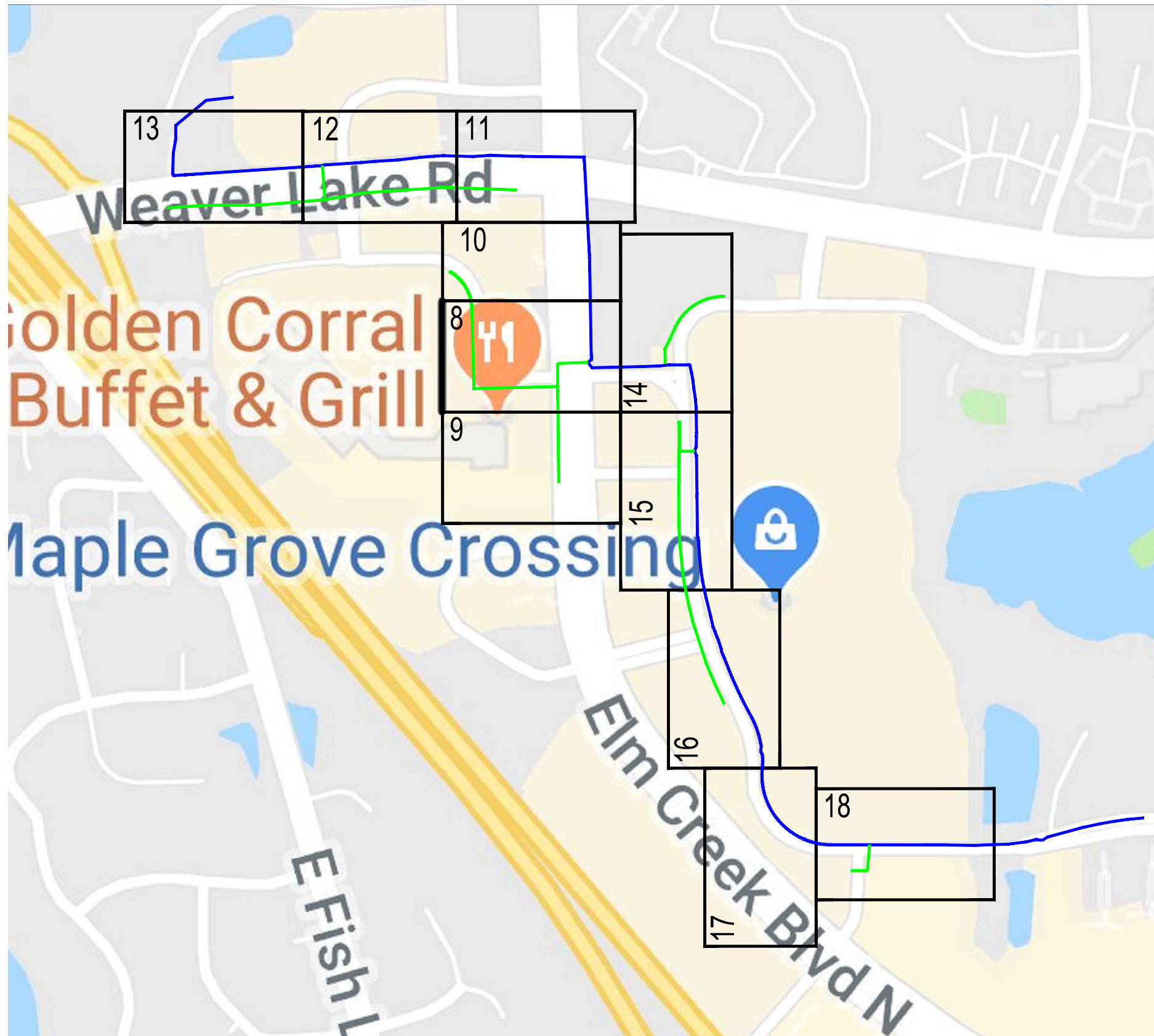
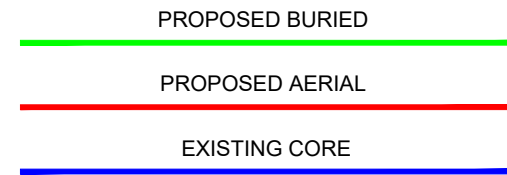
ACCESS TRANSMISSION SERVICES CORP  
D/B/A VERIZON ACCESS TRANSMISSION  
OUTSIDE PLANT CONSTRUCTION  
FIBER OPTIC CABLE ROUTE

**H1005**

SITE CODE: HENNMN  
BH03 / ALEXANDER\_M / H1005  
MAPLE GROVE, MN

PROJECT STATUS: ISSUED FOR PERMITTING  
STATUS DATE: 7/17/19

# LOCATION MAP



**PROJECT:** H1005

ALEXANDER\_M  
MAPLE GROVE, MN

CLARIFICATION NO.	QUANTITY

MCImetro  
 ACCESS TRANSMISSION SERVICES, LLC  
  
 OUTSIDE PLANT CONSTRUCTION  
 TITLE: FIBER OPTIC CABLE ROUTE  
 H1005

**DATE:** 7/17/19

**ENGINEER:** JEW

**DRAWN BY:** JEW

**REVISIONS**

DATE	DESCRIPTION	INITIAL
7/5/19	Construction Package	JEW
7/5/19	QC	JT

EXCEPT AS MAY BE OTHERWISE PROVIDED BY CONTRACT, THESE DRAWINGS AND SPECIFICATIONS SHALL REMAIN THE PROPERTY OF MCI COMMUNICATIONS SERVICES, INC. BOTH BEING ISSUED IN STRICT CONFIDENCE AND SHALL NOT BE REPRODUCED, COPIED, OR USED FOR ANY PURPOSE WITHOUT SPECIFIC WRITTEN PERMISSION.

**SCALE**

**HORIZONTAL:** NTS

**VERTICAL:** NTS

MP \_\_\_\_\_ TO MP \_\_\_\_\_

**SHEET** 3 **OF** 18

**FILE:** H1005.DWG



PROJECT: H1005

ALEXANDER\_M

MAPLE GROVE, MN

# SYMBOLS KEY

	EXISTING	PROPOSED
BURIED CABLE	---	---
AERIAL CABLE	A	A
SUBMARINE CABLE	SUBM	SUBM
FOGWIRE CABLE	FOGW	FOGW
DIRECT BURIED HDPE	H	H
PVC OR SPLIT PVC CONDUIT	---	---
BSP/GSP OR SPLIT BSP/GSP CONDUIT	---	---
STEEL CASING	---	---
REMOVE AND RESTORE ASPHALT OR CONCRETE (WIDTH AS INDICATED)	48"	48"
CORE BORE	---	---
JACK AND BORE	---	---
DIRECTIONAL BORE	DDB	DDB
FUTURE CABLE	---	---
REMOVE CABLE	R	R
TO BE REMOVED OR ABANDONED (SHOWN FOR HDPE)	X H	H X
AERIAL UTILITY (ELECTRIC)	E	E
UNDERGROUND UTILITY (TELEPHONE)	T	T
MAIN TRACKS	---	---
AUXILIARY TRACKS	---	---
CENTERLINE	C/L	C/L
RIGHT-OF-WAY	R/W	R/W
EDGE OF PAVEMENT	---	---
SIDEWALK	---	---
DITCH LINE	D/L	D/L
TAX DISTRICT	---	---
CITY, COUNTY OR STATE BOUNDARY LINE	---	---
PROPERTY LINE	---	---
FENCE LINE	X	X
GUARDRAIL	---	---
TOP OF SLOPE	---	---
TOE OF SLOPE	---	---
FACE OF CURB	F of C	F of C
PROPOSED FIBER IN EXISTING DUCT	---	OP
PROPOSED FIBER AND DUCT	---	DB
PROPOSED DUCT	---	DB
MST TAIL	---	---
EXISTING MCI	---	FO

DISTRICT ENERGY	DE
GAS	G
WATER	W
TELEPHONE	T
ELECTRIC	E
SANITARY SEWER (SEW)	SEW
STORM DRAIN	SD
FENCE	X
CABLE TV	TV
STEAM	STM
OIL	OIL
UNKNOWN UTILITY	UNK
RIGHT OF WAY	R/W
FACE OF CURB	F of C
STREET LT/TRAFFIC SIGNAL	SL/TS
EDGE OF PAVEMENT	EOP

MST - PROPOSED	#
HANDHOLE - EXISTING	HH- 30"x60"x30" 0+00
HANDHOLE - PROPOSED	HH- STA 0+00 24x36x24
MANHOLE - EXISTING	MH-
MANHOLE - PROPOSED	MH- STA 0+00

SPLICE CASE - EXISTING	---
SPLICE CASE - PROPOSED	---
SITE CALLOUT - PROPOSED	MACRO CELL NAME STREET
AERIAL STORAGE - EXISTING	∞
AERIAL STORAGE - PROPOSED	∞

FDH - PROPOSED	FDH# FDH SIZE F1_COUNT
POWER PEDESTAL	P
TELE PHONE PEDESTAL	T
CABLE PEDESTAL	TV

STEEL MARKER AND SIGN-(A)  
ALUMINUM "HUB"-STYLE MARKER-(B)  
FLAT MARKER-(C)  
TUBULAR MARKER-(D)  
TUBULAR MARKER, & ISOLATOR PROTECTOR-(E)

MILE POST MARKER  
NOTE:  
DASHED = NOT FOUND IN FIELD

PERMIT TRACKING FORM IDENTIFIER

ROCK PROBE (DEPTH AS INDICATED)

UTILITY COVER DEPTH

HANDHOLE, MANHOLE OR PULLBOX

POLE

ANCHOR ONLY

GUY ONLY

OVERHEAD GUY (ARROW IN DIRECTION OF PULL)

ANCHOR AND GUY

SIDEWALK ANCHOR AND GUY

FOREIGN ANCHOR AND GUY

PUSH BRACE (EXISTING POLE)

ACCOUNT CODE CHANGE (BURIED TO AERIAL)

BOND AND GROUND

CULVERT (SIZE AS INDICATED)

BRIDGE

WATER METER

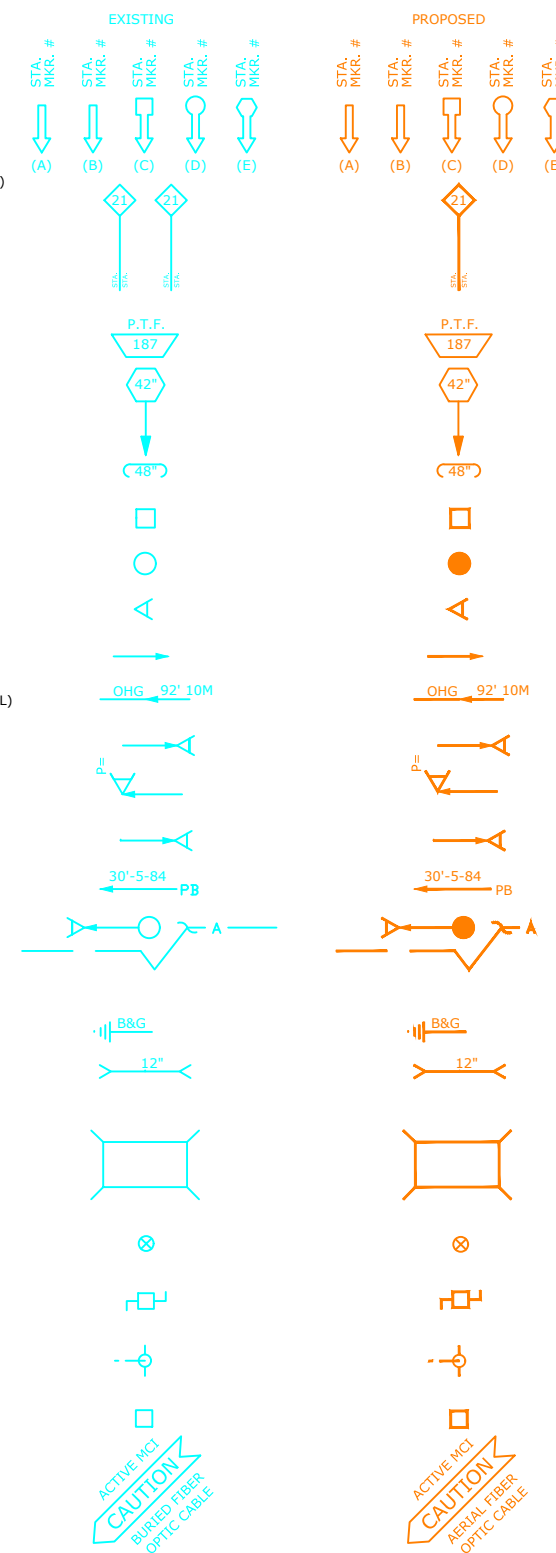
GAS VALVE

FIRE HYDRANT

RAILROAD SIGNAL CONTROL BOX

CAUTION NOTE

FIBER CALL OUTS



U-FOC-48  
FH/BH = CORE FRONT HAUL / BACK HAUL STRAND ASSIGNMENT  
F1 = ODN FEEDER STRAND ASSIGNMENT  
F2 = ODN DISTRIBUTION STRAND ASSIGNMENT  
XD = DEAD STRANDS  
VAC = STRAND NOT YET ASSIGNED

CLARIFICATION NO. QUANTITY

CLARIFICATION NO.	QUANTITY

MCImetro  
ACCESS TRANSMISSION SERVICES, LLC  
OUTSIDE PLANT CONSTRUCTION  
TITLE: FIBER OPTIC CABLE ROUTE  
H1005

DATE: 7/17/19  
ENGINEER: JEW  
DRAWN BY: JEW

REVISIONS

DATE	DESCRIPTION	INITIAL
7/5/19	Construction Package	JEW
7/5/19	QC	JT

EXCEPT AS MAY BE OTHERWISE PROVIDED BY CONTRACT, THESE DRAWINGS AND SPECIFICATIONS SHALL REMAIN THE PROPERTY OF MCI COMMUNICATIONS SERVICES, INC., BOTH BEING ISSUED IN STRICT CONFIDENCE AND SHALL NOT BE REPRODUCED, COPIED, OR USED FOR ANY PURPOSE WITHOUT SPECIFIC WRITTEN PERMISSION.

SCALE  
HORIZONTAL: NTS  
VERTICAL: NTS  
MP \_\_\_\_ TO MP \_\_\_\_  
SHEET 6 OF 18  
FILE: H1005.DWG

CLARIFICATION NO.	QUANTITY

MCImetro  
ACCESS TRANSMISSION SERVICES, LLC



OUTSIDE PLANT CONSTRUCTION

TITLE: FIBER OPTIC CABLE ROUTE

H1005

DATE: 7/17/19

ENGINEER: JEW

DRAWN BY: JEW

REVISIONS

DATE	DESCRIPTION	INITIAL
7/5/19	Construction Package	JEW
7/5/19	QC	JT

EXCEPT AS MAY BE OTHERWISE PROVIDED BY CONTRACT, THESE DRAWINGS AND SPECIFICATIONS SHALL REMAIN THE PROPERTY OF MCI COMMUNICATIONS SERVICES, INC., BOTH BEING ISSUED IN STRICT CONFIDENCE AND SHALL NOT BE REPRODUCED, COPIED, OR USED FOR ANY PURPOSE WITHOUT SPECIFIC WRITTEN PERMISSION.

SCALE

HORIZONTAL: 1"=50'

VERTICAL: 1"=50'

MP \_\_\_\_\_ TO MP \_\_\_\_\_

SHEET 8 OF 18

FILE: H1005

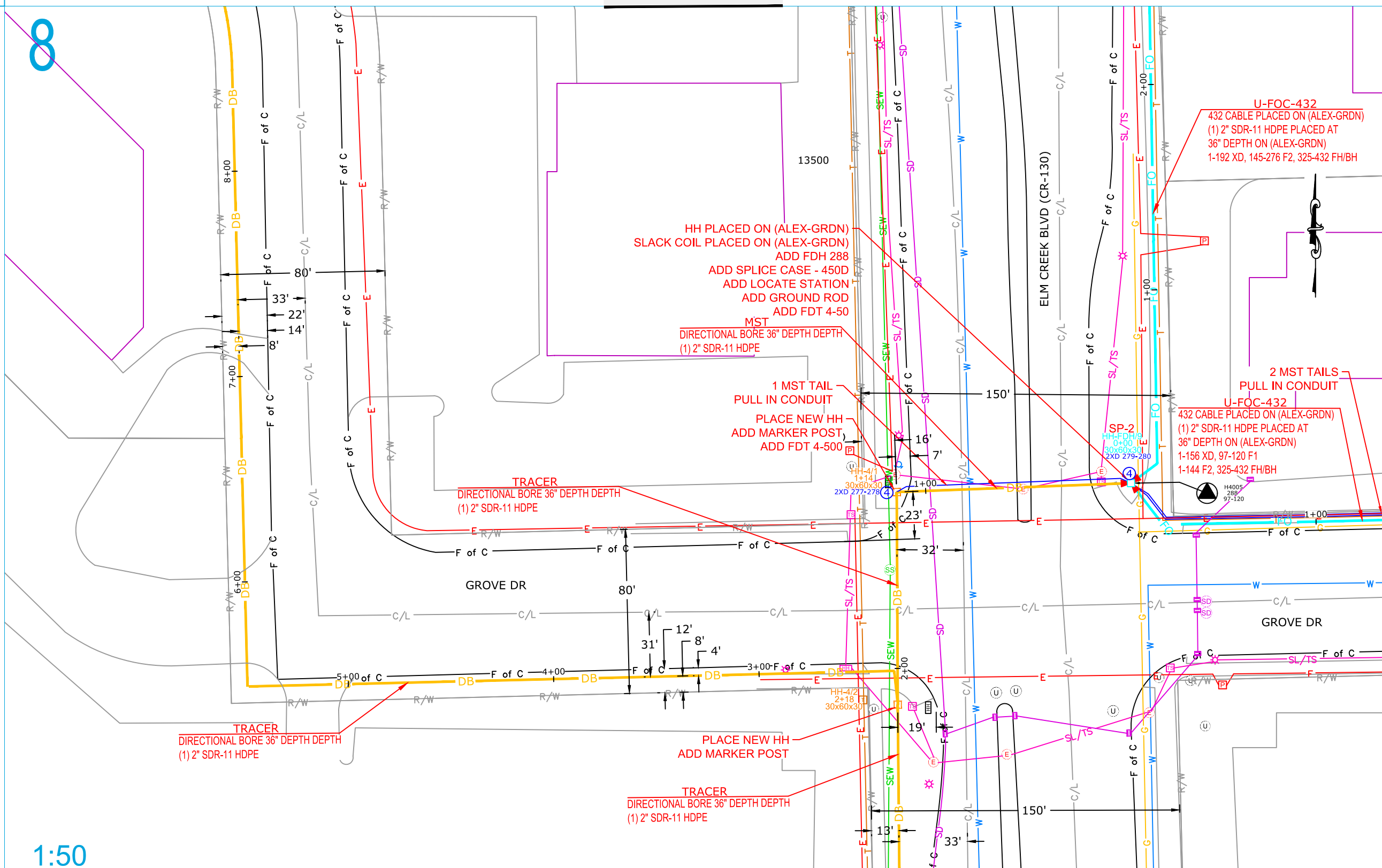
MATCH TO SHEET 10

MATCH TO SHEET 14

MATCH TO SHEET 9

8

1:50





PROJECT: H1005

ALEXANDER\_M  
MAPLE GROVE, MN

CLARIFICATION NO. QUANTITY

CLARIFICATION NO.	QUANTITY

MCImetro  
ACCESS TRANSMISSION SERVICES, LLC



OUTSIDE PLANT CONSTRUCTION

TITLE: FIBER OPTIC CABLE ROUTE  
H1005

DATE: 7/17/19

ENGINEER: JEW

DRAWN BY: JEW

REVISIONS

DATE	DESCRIPTION	INITIAL
7/5/19	qc	JEW
7/5/19		JT

EXCEPT AS MAY BE OTHERWISE PROVIDED BY CONTRACT, THESE DRAWINGS AND SPECIFICATIONS SHALL REMAIN THE PROPERTY OF MCI COMMUNICATIONS SERVICES, INC., BOTH BEING ISSUED IN STRICT CONFIDENCE AND SHALL NOT BE REPRODUCED, COPIED, OR USED FOR ANY PURPOSE WITHOUT SPECIFIC WRITTEN PERMISSION.

SCALE

HORIZONTAL: 1"=50'

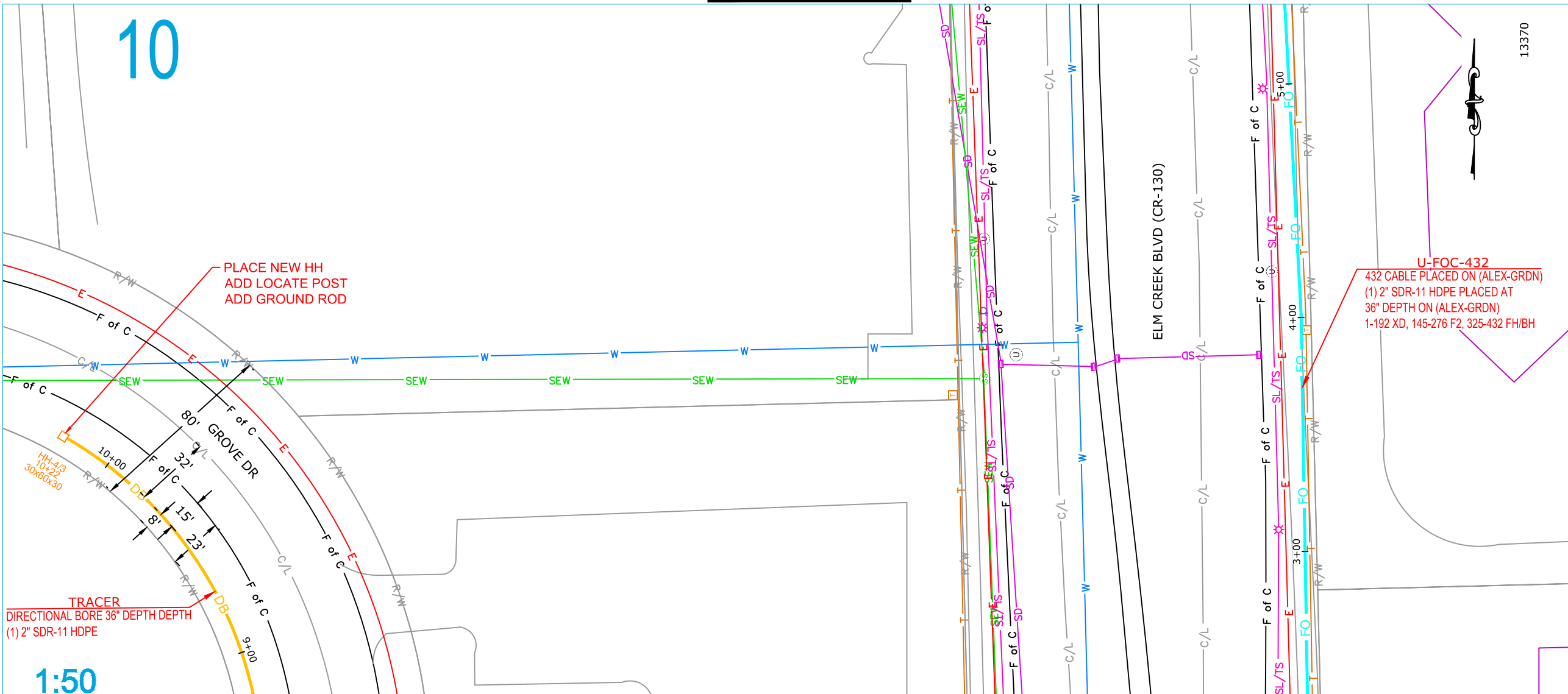
VERTICAL: 1"=50'

MP TO MP

SHEET 10 OF 18

FILE: H1005

MATCH TO SHEET 11



10

13370

MATCH TO SHEET 14

MATCH TO SHEET 8

TRACER  
DIRECTIONAL BORE 36" DEPTH  
(1) 2" SDR-11 HDPE

1:50

PLACE NEW HH  
ADD LOCATE POST  
ADD GROUND ROD

U-FOC-432  
432 CABLE PLACED ON (ALEX-GRDN)  
(1) 2" SDR-11 HDPE PLACED AT  
36" DEPTH ON (ALEX-GRDN)  
1-192 XD, 145-276 F2, 325-432 FH/BH



PROJECT: H1005

ALEXANDER\_M  
MAPLE GROVE, MN

CLARIFICATION NO.	QUANTITY

MCI  
ACCESS TRANSMISSION SERVICES, LLC

OUTSIDE PLANT CONSTRUCTION  
TITLE: FIBER OPTIC CABLE ROUTE

H1005

DATE: 7/17/19

ENGINEER: JEW

DRAWN BY: JEW

REVISIONS

DATE	DESCRIPTION	INITIAL
7/5/19	qc	JEW
7/5/19		JT

EXCEPT AS MAY BE OTHERWISE PROVIDED BY CONTRACT, THESE DRAWINGS AND SPECIFICATIONS SHALL REMAIN THE PROPERTY OF MCI COMMUNICATIONS SERVICES, INC., BOTH BEING ISSUED IN STRICT CONFIDENCE AND SHALL NOT BE REPRODUCED, COPIED, OR USED FOR ANY PURPOSE WITHOUT SPECIFIC WRITTEN PERMISSION.

SCALE

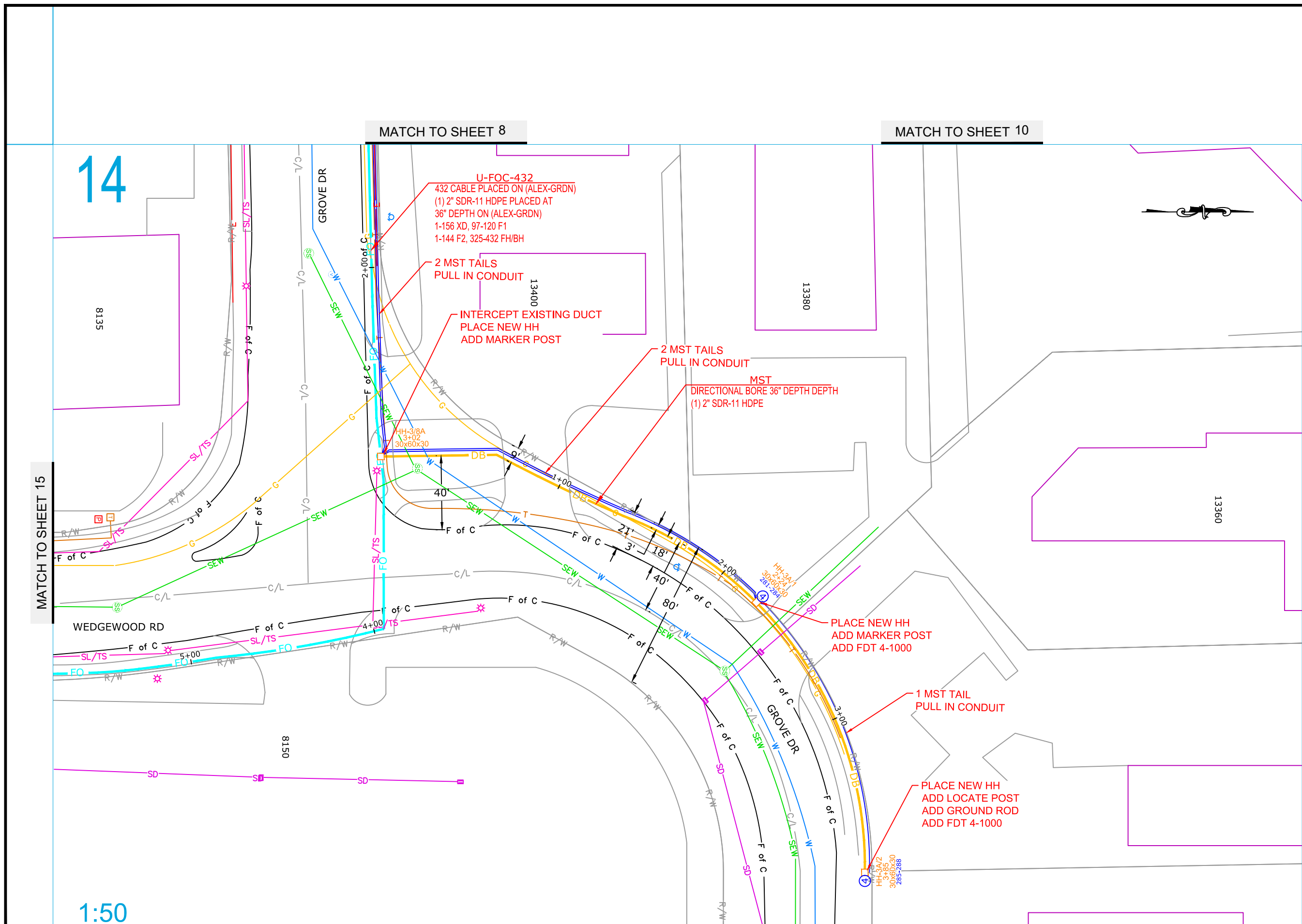
HORIZONTAL: 1"=50'

VERTICAL: 1"=50'

MP TO MP

SHEET 14 OF 18

FILE: H1005



14

1:50

MCImetro  
ACCESS TRANSMISSION SERVICES, LLC



OUTSIDE PLANT CONSTRUCTION  
TITLE: FIBER OPTIC CABLE ROUTE

H1005

DATE: 7/17/19

ENGINEER: JEW

DRAWN BY: JEW

**REVISIONS**

DATE	DESCRIPTION	INITIAL
7/5/19	qc	JEW
7/5/19		JT

EXCEPT AS MAY BE OTHERWISE PROVIDED BY CONTRACT, THESE DRAWINGS AND SPECIFICATIONS SHALL REMAIN THE PROPERTY OF MCI COMMUNICATIONS SERVICES, INC., BOTH BEING ISSUED IN STRICT CONFIDENCE AND SHALL NOT BE REPRODUCED, COPIED, OR USED FOR ANY PURPOSE WITHOUT SPECIFIC WRITTEN PERMISSION.

**SCALE**

HORIZONTAL: 1"=50'

VERTICAL: 1"=50'

MP \_\_\_\_\_ TO MP \_\_\_\_\_

SHEET 15 OF 18

FILE: H1005

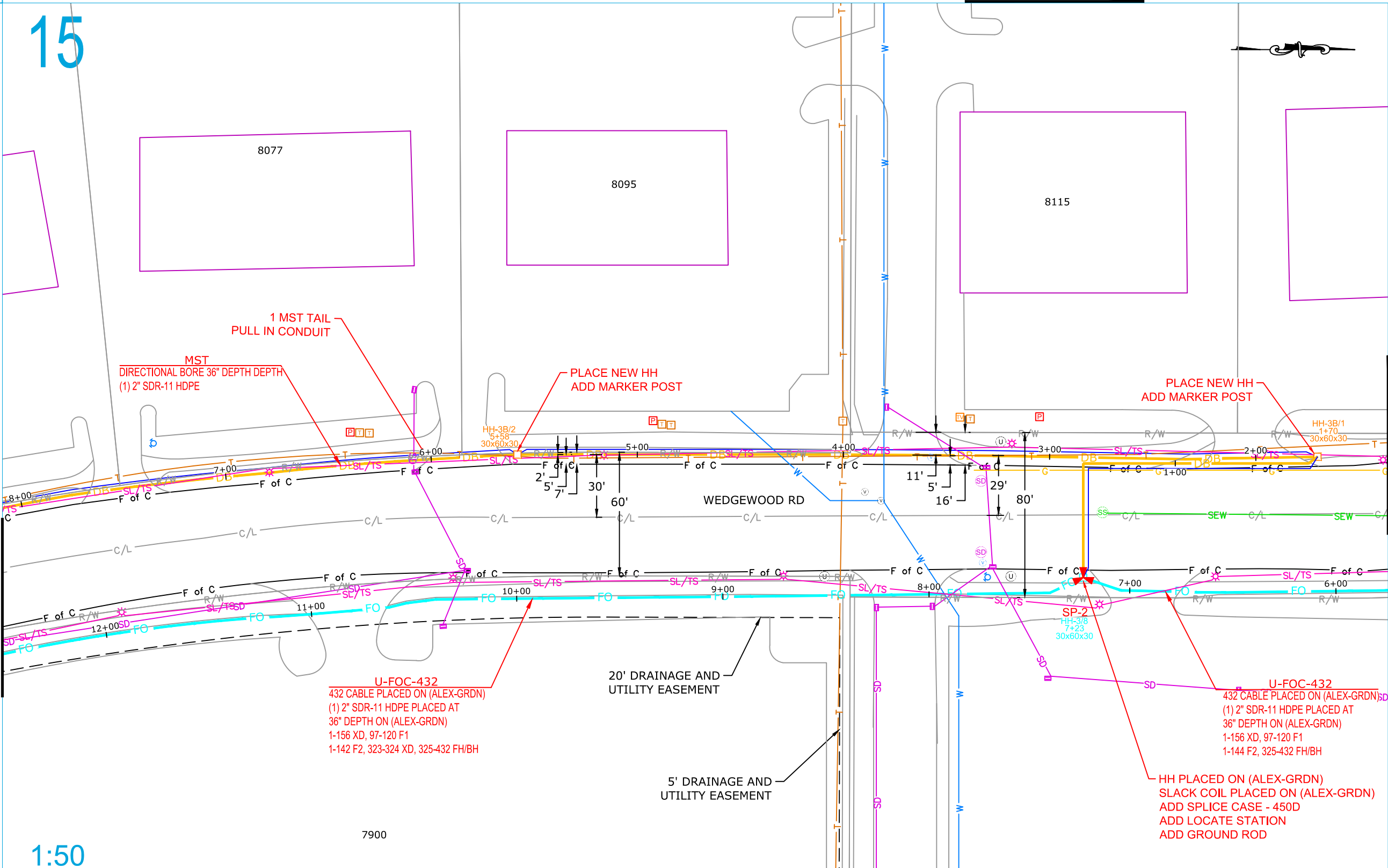
MATCH TO SHEET 9

MATCH TO SHEET 14

MATCH TO SHEET 16

15

1:50



8077

8095

8115

WEDGEWOOD RD

**U-FOC-432**  
432 CABLE PLACED ON (ALEX-GRDN)  
(1) 2" SDR-11 HDPE PLACED AT  
36" DEPTH ON (ALEX-GRDN)  
1-156 XD, 97-120 F1  
1-142 F2, 323-324 XD, 325-432 FH/BH

**U-FOC-432**  
432 CABLE PLACED ON (ALEX-GRDN)  
(1) 2" SDR-11 HDPE PLACED AT  
36" DEPTH ON (ALEX-GRDN)  
1-156 XD, 97-120 F1  
1-144 F2, 325-432 FH/BH

**HH PLACED ON (ALEX-GRDN)**  
SLACK COIL PLACED ON (ALEX-GRDN)  
ADD SPLICE CASE - 450D  
ADD LOCATE STATION  
ADD GROUND ROD

PLACE NEW HH  
ADD MARKER POST

PLACE NEW HH  
ADD MARKER POST

1 MST TAIL  
PULL IN CONDUIT

**MST**  
DIRECTIONAL BORE 36" DEPTH  
(1) 2" SDR-11 HDPE

20' DRAINAGE AND  
UTILITY EASEMENT

5' DRAINAGE AND  
UTILITY EASEMENT

7900



PROJECT: H1005

ALEXANDER\_M

MAPLE GROVE, MN

CLARIFICATION NO. QUANTITY

CLARIFICATION NO.	QUANTITY

MCI metro  
ACCESS TRANSMISSION SERVICES, LLC



OUTSIDE PLANT CONSTRUCTION

TITLE: FIBER OPTIC CABLE ROUTE

H1005

DATE: 7/17/19

ENGINEER: JEW

DRAWN BY: JEW

REVISIONS

DATE	DESCRIPTION	INITIAL
7/5/19	qc	JEW
7/5/19		JT

EXCEPT AS MAY BE OTHERWISE PROVIDED BY CONTRACT, THESE DRAWINGS AND SPECIFICATIONS SHALL REMAIN THE PROPERTY OF MCI COMMUNICATIONS SERVICES, INC., BOTH BEING ISSUED IN STRICT CONFIDENCE AND SHALL NOT BE REPRODUCED, COPIED, OR USED FOR ANY PURPOSE WITHOUT SPECIFIC WRITTEN PERMISSION.

SCALE

HORIZONTAL: 1"=50'

VERTICAL: 1"=50'

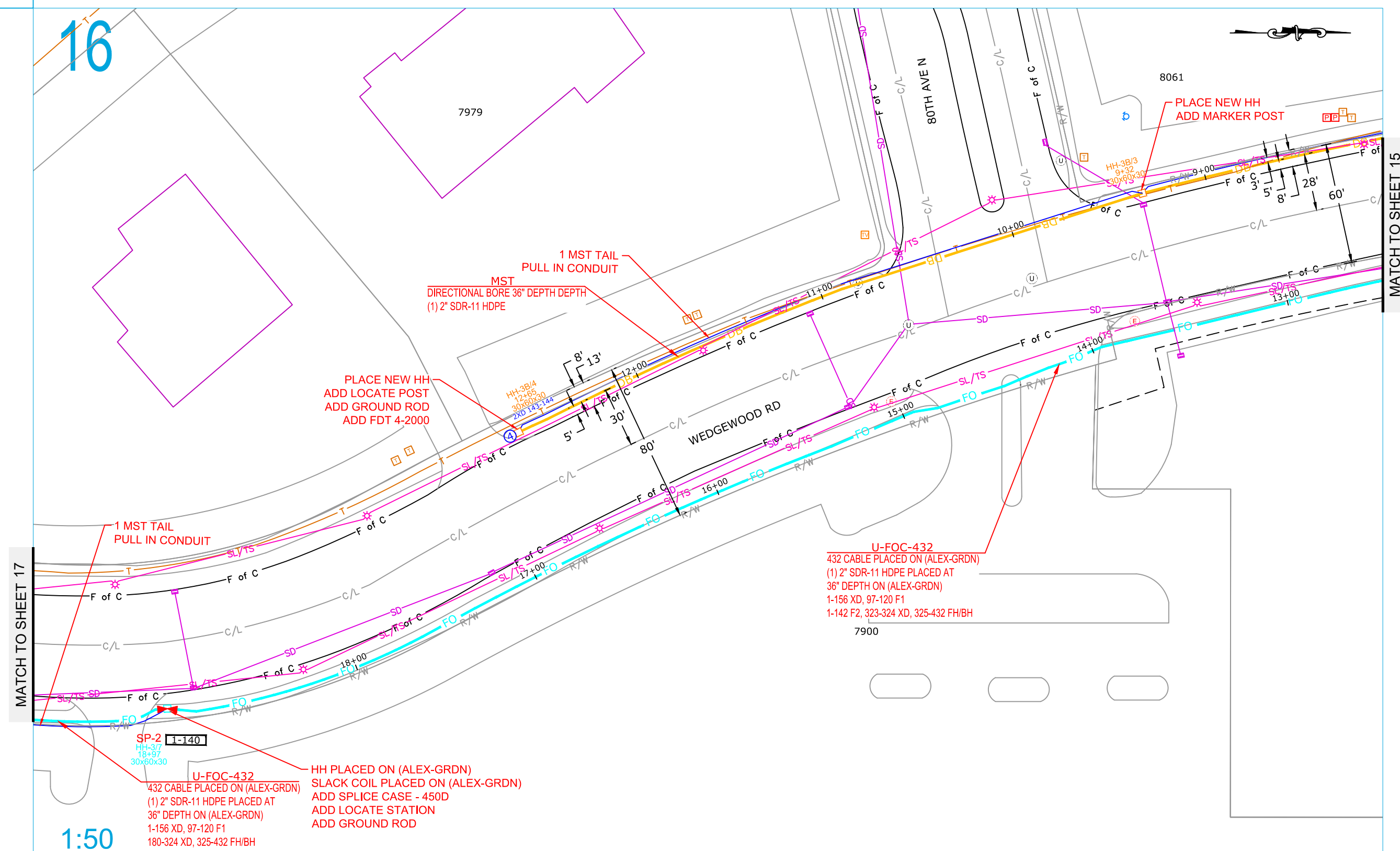
MP TO MP

SHEET 16 OF 18

FILE: H1005

16

1:50



MATCH TO SHEET 17

MATCH TO SHEET 15

1 MST TAIL PULL IN CONDUIT  
MST DIRECTIONAL BORE 36" DEPTH DEPTH  
(1) 2" SDR-11 HDPE

PLACE NEW HH ADD LOCATE POST  
ADD GROUND ROD  
ADD FDT 4-2000

U-FOC-432  
432 CABLE PLACED ON (ALEX-GRDN)  
(1) 2" SDR-11 HDPE PLACED AT  
36" DEPTH ON (ALEX-GRDN)  
1-156 XD, 97-120 F1  
1-142 F2, 323-324 XD, 325-432 FH/BH

SP-2 1-140  
HH-3/7 18-37 30x60x30  
U-FOC-432  
432 CABLE PLACED ON (ALEX-GRDN)  
(1) 2" SDR-11 HDPE PLACED AT  
36" DEPTH ON (ALEX-GRDN)  
1-156 XD, 97-120 F1  
180-324 XD, 325-432 FH/BH

HH PLACED ON (ALEX-GRDN)  
SLACK COIL PLACED ON (ALEX-GRDN)  
ADD SPLICE CASE - 450D  
ADD LOCATE STATION  
ADD GROUND ROD

PLACE NEW HH  
ADD MARKER POST





PROJECT: H1005

ALEXANDER\_M

MAPLE GROVE, MN

CLARIFICATION NO. QUANTITY

CLARIFICATION NO.	QUANTITY

MCI  
ACCESS TRANSMISSION SERVICES, LLC



OUTSIDE PLANT CONSTRUCTION  
TITLE: FIBER OPTIC CABLE ROUTE

H1005

DATE: 7/17/19

ENGINEER: JEW

DRAWN BY: JEW

REVISIONS

DATE	DESCRIPTION	INITIAL
7/5/19	qc	JEW
7/5/19		JT

EXCEPT AS MAY BE OTHERWISE PROVIDED BY CONTRACT, THESE DRAWINGS AND SPECIFICATIONS SHALL REMAIN THE PROPERTY OF MCI COMMUNICATIONS SERVICES, INC., BOTH BEING ISSUED IN STRICT CONFIDENCE AND SHALL NOT BE REPRODUCED, COPIED, OR USED FOR ANY PURPOSE WITHOUT SPECIFIC WRITTEN PERMISSION.

SCALE

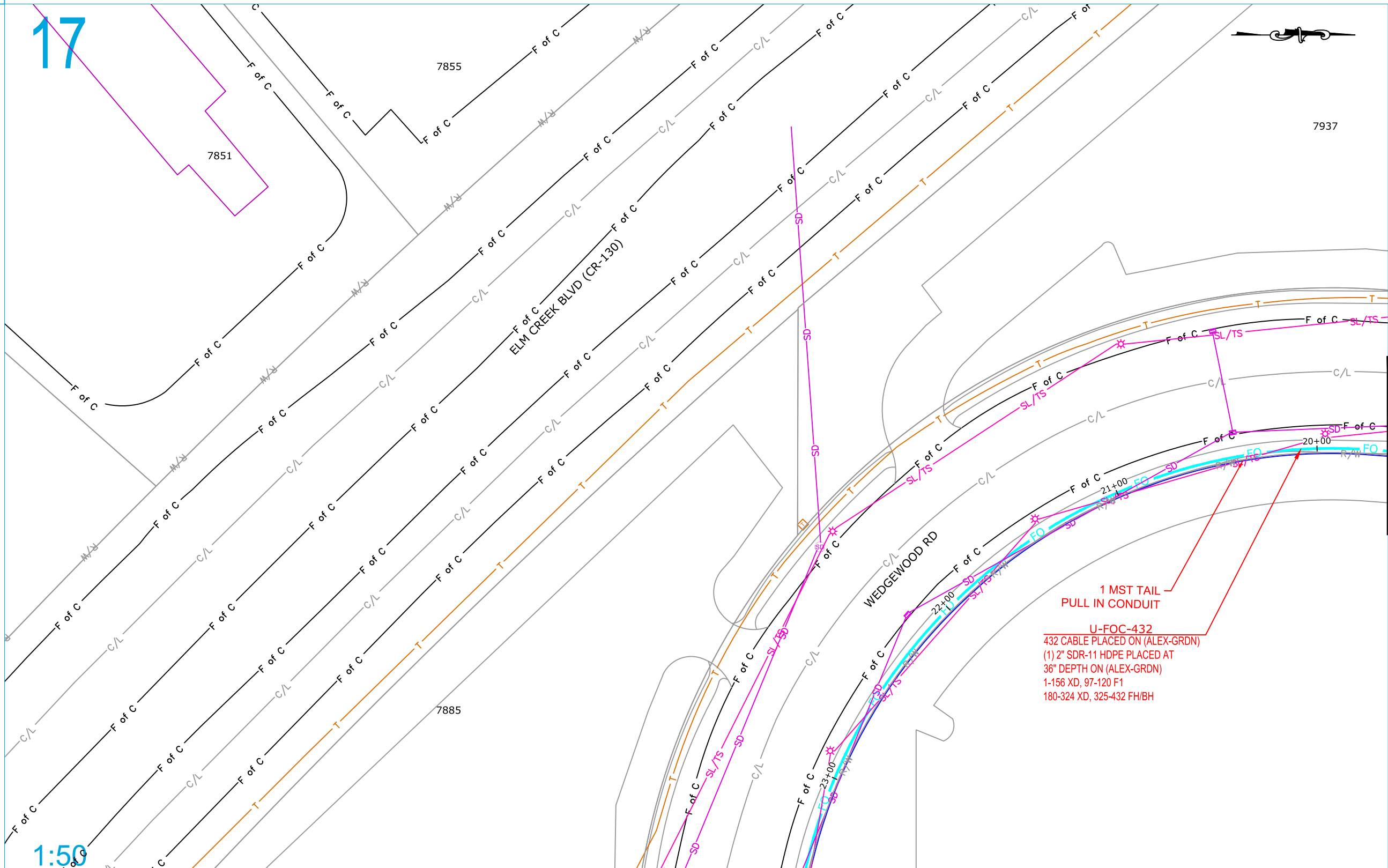
HORIZONTAL: 1"=50'

VERTICAL: 1"=50'

MP TO MP

SHEET 17 OF 18

FILE: H1005



17

1:50

MATCH TO SHEET 18

MATCH TO SHEET 16



PROJECT: H1005  
 ALEXANDER\_M  
 MAPLE GROVE, MN

CLARIFICATION NO. QUANTITY

CLARIFICATION NO.	QUANTITY

MCImetro  
 ACCESS TRANSMISSION SERVICES, LLC  
**MCI**  
 OUTSIDE PLANT CONSTRUCTION  
 TITLE: FIBER OPTIC CABLE ROUTE  
 H1005

DATE: 7/17/19  
 ENGINEER: JEW  
 DRAWN BY: JEW

REVISIONS

DATE	DESCRIPTION	INITIAL
7/5/19	qc	JEW
7/5/19		JT

EXCEPT AS MAY BE OTHERWISE PROVIDED BY CONTRACT, THESE DRAWINGS AND SPECIFICATIONS SHALL REMAIN THE PROPERTY OF MCI COMMUNICATIONS SERVICES, INC., BOTH BEING ISSUED IN STRICT CONFIDENCE AND SHALL NOT BE REPRODUCED, COPIED, OR USED FOR ANY PURPOSE WITHOUT SPECIFIC WRITTEN PERMISSION.

SCALE  
 HORIZONTAL: 1"=50'  
 VERTICAL: 1"=50'  
 MP \_\_\_\_\_ TO MP \_\_\_\_\_  
 SHEET 18 OF 18  
 FILE: H1005

18

MATCH TO SHEET 17

1:50

7900

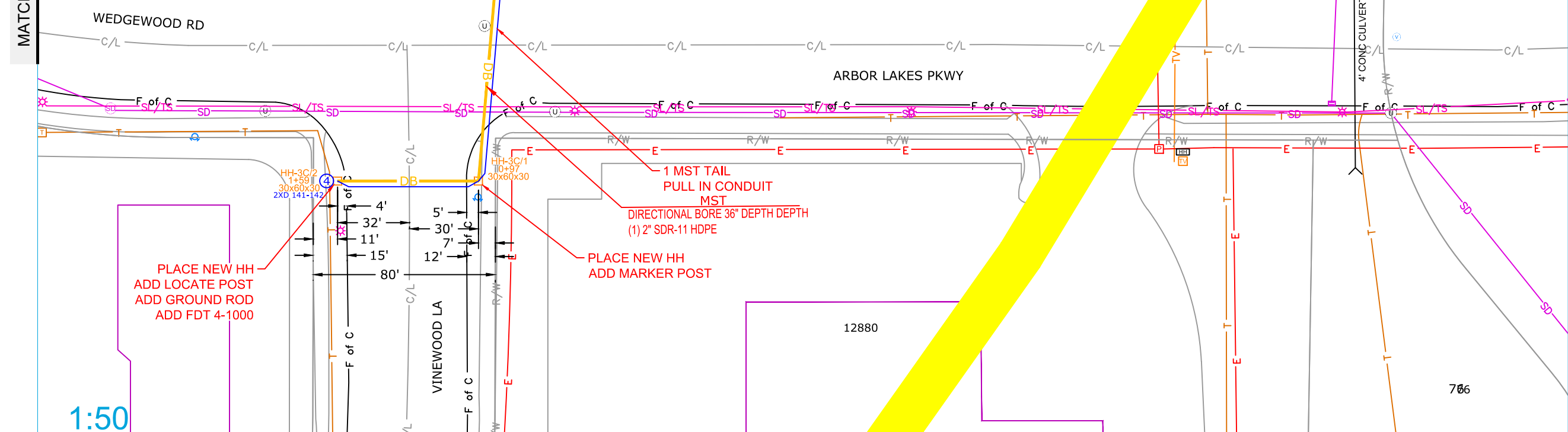
U-FOC-432  
 432 CABLE PLACED ON (ALEX-GRDN)  
 (1) 2" SDR-11 HDPE PLACED AT  
 36" DEPTH ON (ALEX-GRDN)  
 1-156 XD, 97-120 F1  
 180-324 XD, 325-432 FH/BH

INTERCEPT EXISTING DUCT  
 PLACE NEW HH  
 ADD MARKER POST

PLACE NEW HH  
 ADD LOCATE POST  
 ADD GROUND ROD  
 ADD FDT 4-1000

1 MST TAIL  
 PULL IN CONDUIT  
 MST  
 DIRECTIONAL BORE 36" DEPTH  
 (1) 2" SDR-11 HDPE

PLACE NEW HH  
 ADD MARKER POST



ARBOR LAKES PKWY

VINEWOOD LA

12880

766

4" CONC. CULVERT

4" CONC. CULVERT