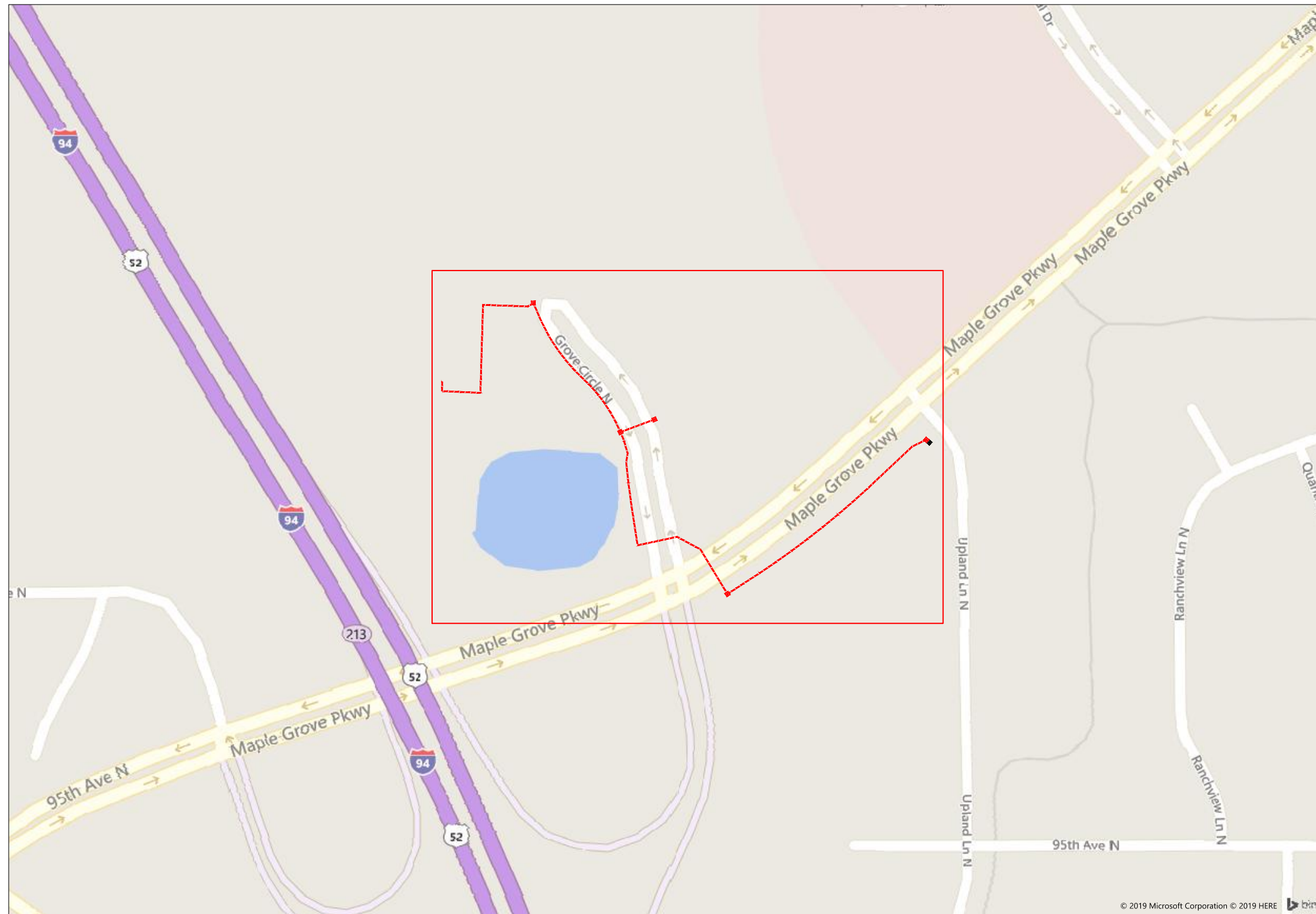


#69305 CMG LLC DBA Cambria Hotel



9655 Grove Circle N, Maple Grove, MN 55369



1" = -

Route
CMG LLC DBA Cambria
City
Maple Grove
County
Hennepin
Filename
CMG LLC DBA Cambria Hotel
Work Order #
#69305



TRACKING

Staked By:
-
Drafted By:
WJT 5/21/2019
Built By:
-
As-Built By:
-
Revision
Rev #1 MRT 8/22/2019

Construction Totals	
Route Footage	2538
Total Underground	2538
Total Aerial	0
Underground (New)	2538
Aerial (New)	0
Overpull (Ex Duct)	0
Overlash (Ex Strand)	0
Plow	0
Bore	2538
New Vaults	5
New Peds	0

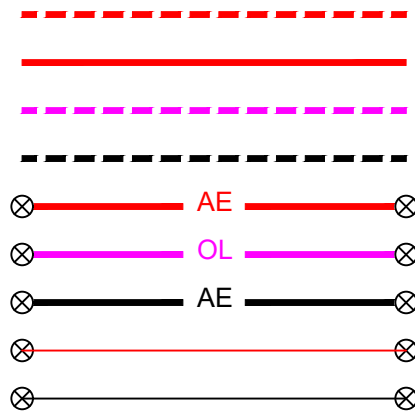
GSOC
GOPHER STATE ONE CALL
1-800-252-1116
www.gopherstateonecall.org

Prepared by:
 compass consultants inc.
Perham, MN 218-346-3600
TrustCompass.com

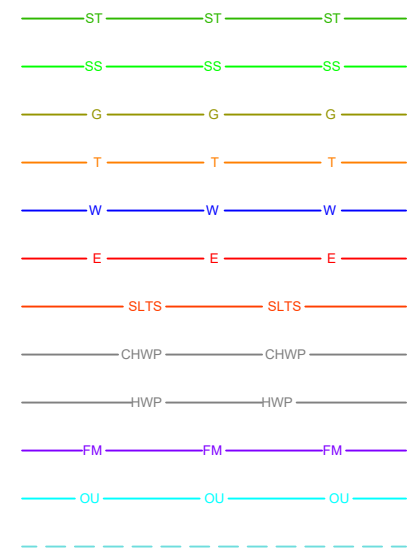
Overall

Legend

Fiber Linetypes



Other Utility Linetypes



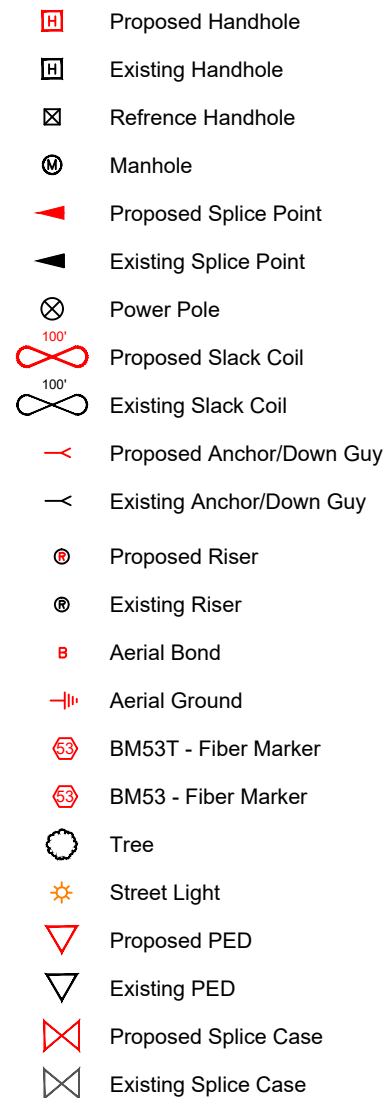
Proposed Underground Fiber - Bore
 Proposed Underground Fiber - Plow
 Proposed UG Fiber in Existing Duct
 Existing Underground Fiber
 Proposed Aerial Fiber
 Proposed Aerial Overlash
 Existing Aerial Fiber
 Proposed Aerial Strand
 Existing Aerial Strand

Storm Sewer
 Sanitary Sewer
 Gas Line
 Tele./Comm. Line
 Water Line
 Electric Line
 Street light/Traffic signal
 District Cooling
 District Heating
 Force Main
 Other Utility or Unknown
 Utility Easement

Abbreviations

CL - Center Line
 R/W - Right of Way
 BOC - Back of Curb
 FC - Front of Curb
 EOR - Edge of Road
 S/W - Sidewalk
 HH - Handhole
 MH - Manhole

Symbols



Construction Totals

Route Footage	2538
Total Underground	2538
Total Aerial	0
Underground (New)	2538
Aerial (New)	0
Overpull (Ex Duct)	0
Overlash (Ex Strand)	0
Plow	0
Bore	2538
New Vaults	5
New Peds	0

Fiber

TBD Fiber	0
12 Fiber	0
24 Fiber	0
36 Fiber	0
48 Fiber	3088
72 Fiber	0
96 Fiber	0
144 Fiber	0
288 Fiber	0
12 Dielectric Fiber	0
24 Dielectric Fiber	0
36 Dielectric Fiber	0
48 Dielectric Fiber	0
72 Dielectric Fiber	0
96 Dielectric Fiber	0
144 Dielectric Fiber	0
288 Dielectric Fiber	0

Materials

Duct (1.25")	4572
Vault(Small)	0
Vault (Medium)	5
Vault (Large)	0
PED BD5	0
Warning Sign	0
Locate Terminal	5
Ground Rod	5
Strand	0



1" = -

Route
 CMG LLC DBA Cambria
 City
 Maple Grove
 County
 Hennepin
 Filename
 CMG LLC DBA Cambria Hotel
 Work Order #
 #69305



TRACKING

Staked By:
 -
 Drafted By:
 WJT 5/21/2019
 Built By:
 -
 As-Built By:
 -
 Revision
 Rev #1 MRT 8/22/2019

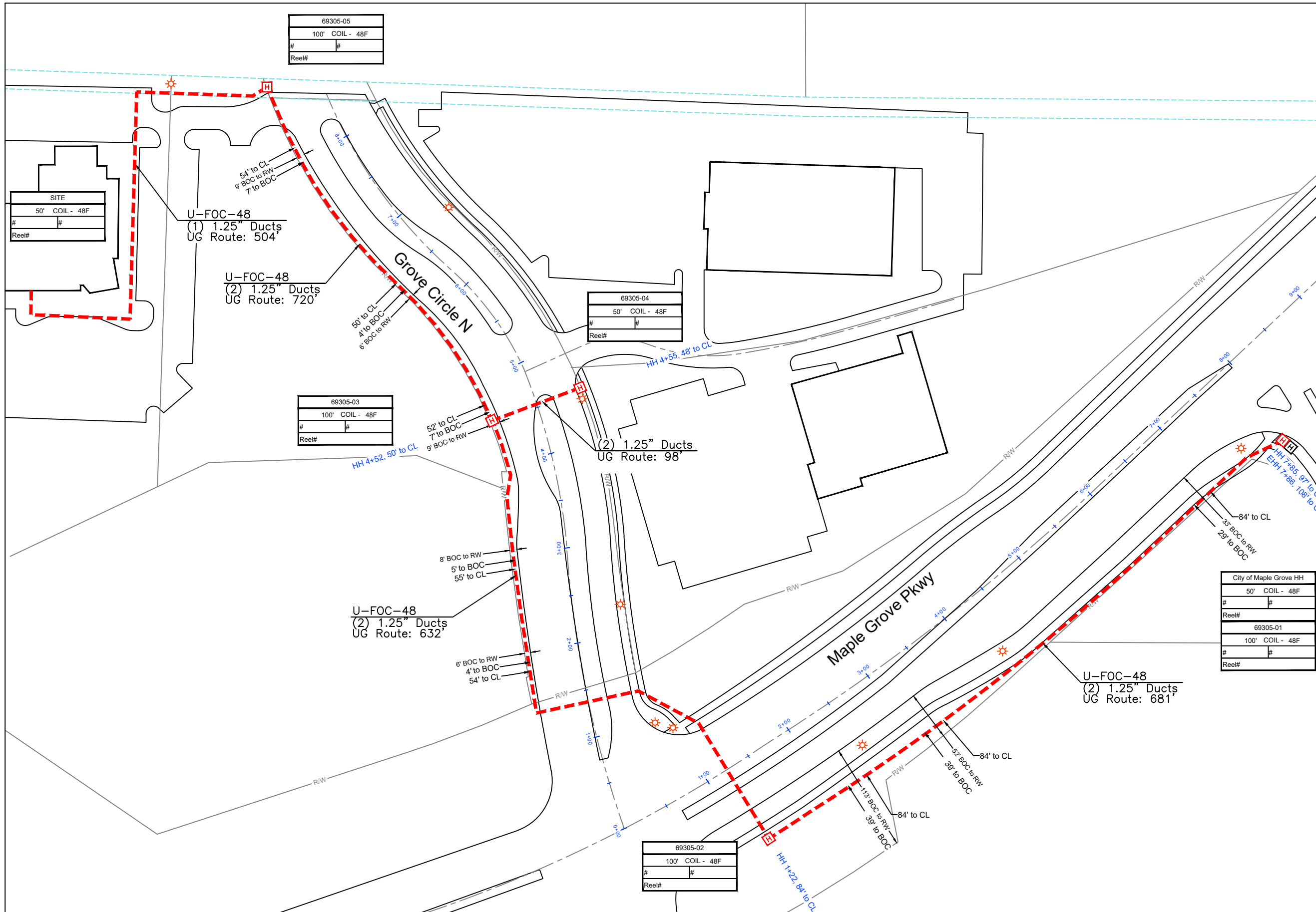
GSOC

GOPHER STATE ONE CALL
 1-800-252-1116
 www.gopherstateonecall.org

Prepared by:

 Perham, MN 218-346-3600
 TrustCompass.com

Legend



1" = 100'

Route
 CMG LLC DBA Cambria
 City
 Maple Grove
 County
 Hennepin
 Filename
 CMG LLC DBA Cambria Hotel
 Work Order #
 #69305



TRACKING	
Staked By:	-
Drafted By:	WJT 5/21/2019
Built By:	-
As-Built By:	-
Revision	Rev #1 MRT 8/22/2019

City of Maple Grove HH	
50' COIL - 48F	#
#	#
Reel#	
69305-01	
100' COIL - 48F	#
#	#
Reel#	

69305-02	
100' COIL - 48F	#
#	#
Reel#	

69305-05	
100' COIL - 48F	#
#	#
Reel#	

69305-03	
100' COIL - 48F	#
#	#
Reel#	

SITE	
50' COIL - 48F	#
#	#
Reel#	

GSOC
 GOPHER STATE ONE CALL
 1-800-252-1116
 www.gopherstateonecall.org

Prepared by:
 compass consultants inc.
 Perham, MN 218-346-3600
 TrustCompass.com