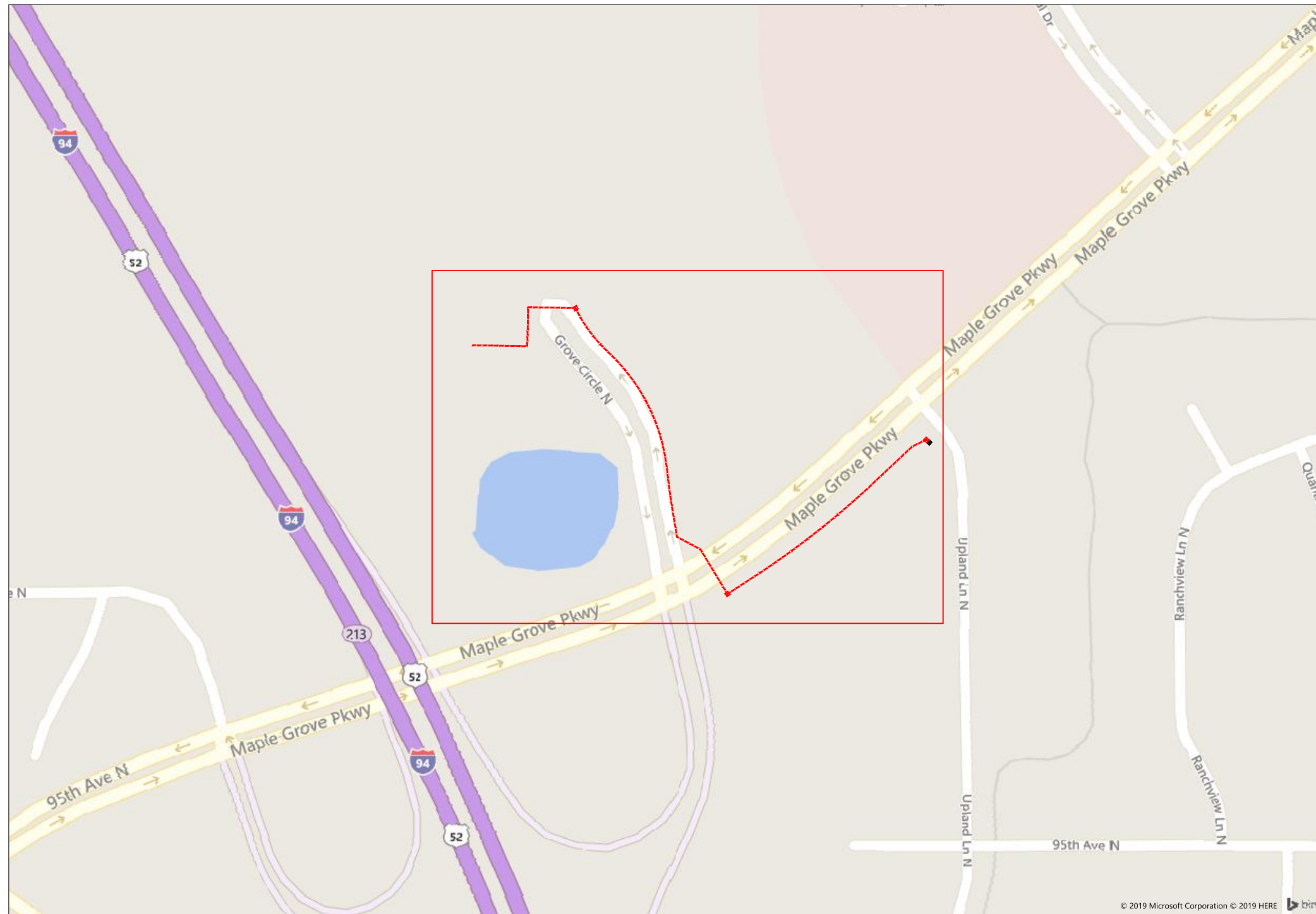


#69305 CMG LLC DBA Cambria Hotel



9655 Grove Circle N, Maple Grove, MN 55369



1" = -

Route
CMG LLC DBA Cambria
City
Maple Grove
County
Hennepin
Filename
CMG LLC DBA Cambria Hotel
Work Order #
#69305



TRACKING

Staked By: -
Drafted By: WJT 5/21/2019
Built By: -
As-Built By: -
Revision
Rev #1 -

Construction Totals	
Route Footage	1969
Total Underground	1969
Total Aerial	0
Underground (New)	1969
Aerial (New)	0
Overpull (Ex Duct)	0
Overlash (Ex Strand)	0
Plow	0
Bore	1969
New Vaults	3
New Peds	0

GSOC
GOPHER STATE ONE CALL
1-800-252-1116
www.gopherstateonecall.org

Prepared by:
 compass consultants inc.
Perham, MN 218-346-3600
TrustCompass.com

Overall

Legend

Fiber Linetypes

	Proposed Underground Fiber - Bore
	Proposed Underground Fiber - Plow
	Proposed UG Fiber in Existing Duct
	Existing Underground Fiber
	Proposed Aerial Fiber
	Proposed Aerial Overlash
	Existing Aerial Fiber
	Proposed Aerial Strand
	Existing Aerial Strand

Other Utility Linetypes

	Storm Sewer
	Sanitary Sewer
	Gas Line
	Tele./Comm. Line
	Water Line
	Electric Line
	Street light/Traffic signal
	District Cooling
	District Heating
	Force Main
	Other Utility or Unknown
	Utility Easement

Abbreviations

CL - Center Line
R/W - Right of Way
BOC - Back of Curb
FC - Front of Curb
EOR - Edge of Road
S/W - Sidewalk
HH - Handhole
MH - Manhole

Symbols

	Proposed Handhole
	Existing Handhole
	Reference Handhole
	Manhole
	Proposed Splice Point
	Existing Splice Point
	Power Pole
	Proposed Slack Coil
	Existing Slack Coil
	Proposed Anchor/Down Guy
	Existing Anchor/Down Guy
	Proposed Riser
	Existing Riser
	Aerial Bond
	Aerial Ground
	BM53T - Fiber Marker
	BM53 - Fiber Marker
	Tree
	Street Light
	Proposed PED
	Existing PED
	Proposed Splice Case
	Existing Splice Case

Construction Totals

Route Footage	1969
Total Underground	1969
Total Aerial	0
Underground (New)	1969
Aerial (New)	0
Overpull (Ex Duct)	0
Overlash (Ex Strand)	0
Plow	0
Bore	1969
New Vaults	3
New Peds	0

Fiber

TBD Fiber	0
12 Fiber	0
24 Fiber	0
36 Fiber	0
48 Fiber	2369
72 Fiber	0
96 Fiber	0
144 Fiber	0
288 Fiber	0
12 Dielectric Fiber	0
24 Dielectric Fiber	0
36 Dielectric Fiber	0
48 Dielectric Fiber	0
72 Dielectric Fiber	0
96 Dielectric Fiber	0
144 Dielectric Fiber	0
288 Dielectric Fiber	0

Materials

Duct (1.25")	3556
Vault(Small)	0
Vault (Medium)	3
Vault (Large)	0
PED BD5	0
Warning Sign	0
Locate Terminal	3
Ground Rod	3
Strand	0



1" = -

Route	CMG LLC DBA Cambria
City	Maple Grove
County	Hennepin
Filename	CMG LLC DBA Cambria Hotel
Work Order #	#69305



TRACKING

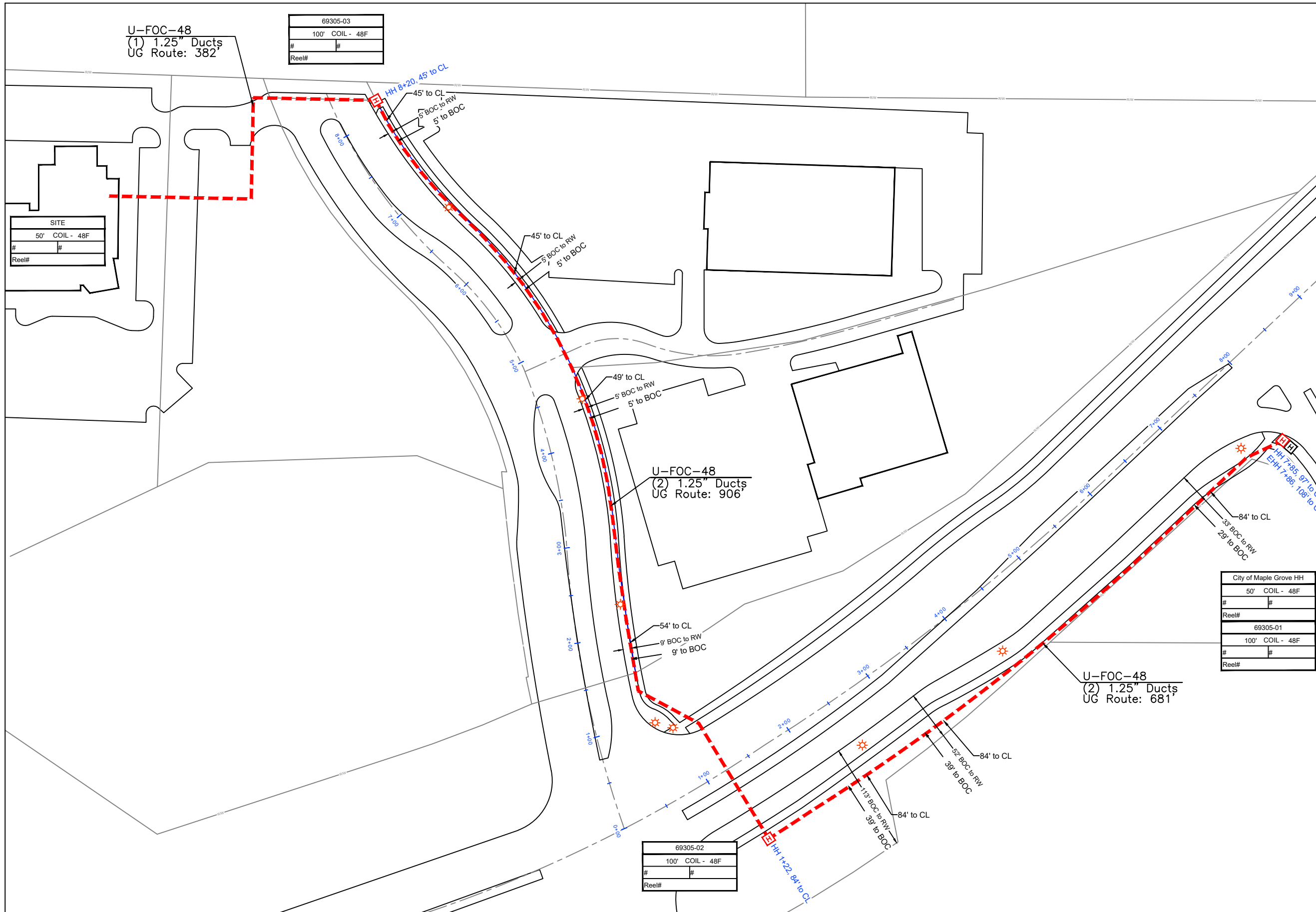
Staked By:	-
Drafted By:	WJT 5/21/2019
Built By:	-
As-Built By:	-
Revision	Rev #1 -

GSOC

GOPHER STATE ONE CALL
1-800-252-1116
www.gopherstateonecall.org

Prepared by:	compass consultants inc. Perham, MN 218-346-3600 TrustCompass.com
--------------	---

Legend



U-FOC-48
 (1) 1.25" Ducts
 UG Route: 382'

69305-03
100' COIL - 48F
#
Reel#

SITE
50' COIL - 48F
#
Reel#

U-FOC-48
 (2) 1.25" Ducts
 UG Route: 906'

U-FOC-48
 (2) 1.25" Ducts
 UG Route: 681'

69305-02
100' COIL - 48F
#
Reel#

City of Maple Grove HH
50' COIL - 48F
#
Reel#
69305-01
100' COIL - 48F
#
Reel#



1" = 100'

Route
 CMG LLC DBA Cambria
 City
 Maple Grove
 County
 Hennepin
 Filename
 CMG LLC DBA Cambria Hotel
 Work Order #
 #69305



TRACKING

Staked By: -
 Drafted By: WJT 5/21/2019
 Built By: -
 As-Built By: -
 Revision
 Rev #1 - -

GSOC
 GOPHER STATE ONE CALL
 1-800-252-1116
 www.gopherstateonecall.org

Prepared by:
 compass consultants inc.
 Perham, MN 218-346-3600
 TrustCompass.com