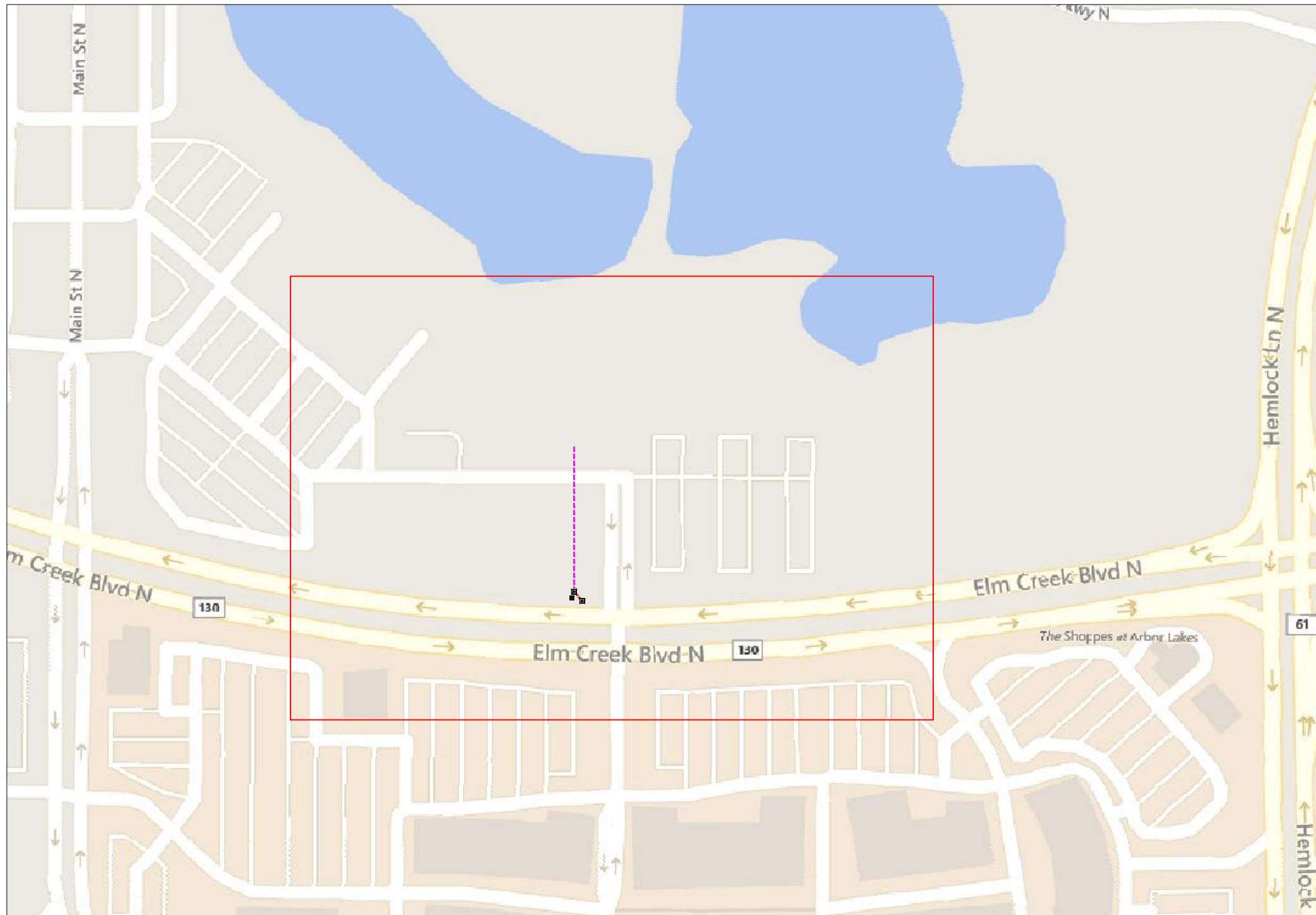


# Connexus Energy-Maple Grove



12300 Elm Creek Blvd N



1" = -

Route	-
City	Maple Grove, MN
County	Hennepin
Filename	Connexus Energy
Work Order #	69260



### TRACKING

Staked By:	-
Drafted By:	TJR 5/20/19
Built By:	-
As-Built By:	-
Revision	Rev #1 -

### Construction Totals

Route Footage	336
Total Underground	336
Total Aerial	0
Underground (New)	26
Aerial (New)	0
Overpull (Ex Duct)	310
Overlash (Ex Strand)	0
Plow	0
Bore	26
New Vaults	0
New Peds	0

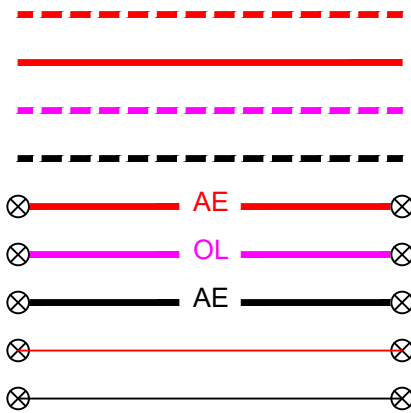
**GSOC**  
 GOPHER STATE ONE CALL  
 1-800-252-1116  
[www.gopherstateonecall.org](http://www.gopherstateonecall.org)

Prepared by:  
 compass consultants inc.  
 Perham, MN 218-346-3600  
[TrustCompass.com](http://TrustCompass.com)

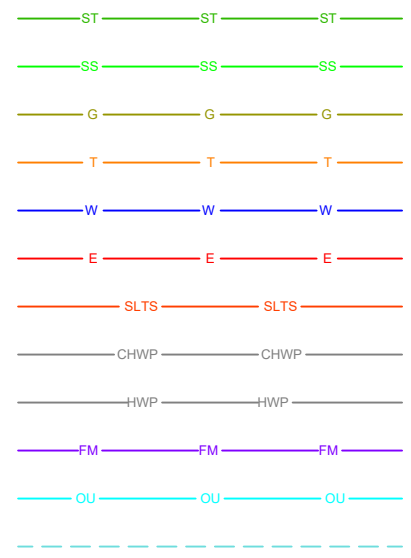
Overall

# Legend

## Fiber Linetypes



## Other Utility Linetypes



## Abbreviations

- CL - Center Line
- R/W - Right of Way
- BOC - Back of Curb
- FC - Front of Curb
- EOR - Edge of Road
- S/W - Sidewalk
- HH - Handhole
- MH - Manhole

## Symbols

- Proposed Handhole (Red square with 'H')
- Existing Handhole (Black square with 'H')
- Reference Handhole (Square with 'X')
- Manhole (Circle with 'M')
- Proposed Splice Point (Red triangle pointing right)
- Existing Splice Point (Black triangle pointing right)
- Power Pole (Circle with 'X')
- Proposed Slack Coil (Red infinity symbol with '100'
- Existing Slack Coil (Black infinity symbol with '100'
- Proposed Anchor/Down Guy (Red line with hook)
- Existing Anchor/Down Guy (Black line with hook)
- Proposed Riser (Red circle with dot)
- Existing Riser (Black circle with dot)
- Aerial Bond (Red square with 'B')
- Aerial Ground (Red line with hook)
- BM53T - Fiber Marker (Red square with '53')
- BM53 - Fiber Marker (Black square with '53')
- Tree (Circle with 'X')
- Street Light (Yellow star)
- Proposed PED (Red inverted triangle)
- Existing PED (Black inverted triangle)
- Proposed Splice Case (Red square with 'X')
- Existing Splice Case (Black square with 'X')

## Construction Totals

Route Footage	336
Total Underground	336
Total Aerial	0
Underground (New)	26
Aerial (New)	0
Overpull (Ex Duct)	310
Overlash (Ex Strand)	0
Plow	0
Bore	26
New Vaults	0
New Peds	0

## Fiber

TBD Fiber	0
12 Fiber	0
24 Fiber	0
36 Fiber	0
48 Fiber	511
72 Fiber	0
96 Fiber	0
144 Fiber	0
288 Fiber	0
12 Dielectric Fiber	0
24 Dielectric Fiber	0
36 Dielectric Fiber	0
48 Dielectric Fiber	0
72 Dielectric Fiber	0
96 Dielectric Fiber	0
144 Dielectric Fiber	0
288 Dielectric Fiber	0

## Materials

Duct (1.25")	26
Vault( Small)	0
Vault (Medium)	0
Vault (Large)	0
PED BD5	0
Warning Sign	0
Locate Terminal	0
Ground Rod	0
Strand	0



1" = -

Route	-
City	Maple Grove, MN
County	Hennepin
Filename	Connexus Energy
Work Order #	69260



## TRACKING

Staked By:	-
Drafted By:	TJR 5/20/19
Built By:	-
As-Built By:	-
Revision	Rev #1 -

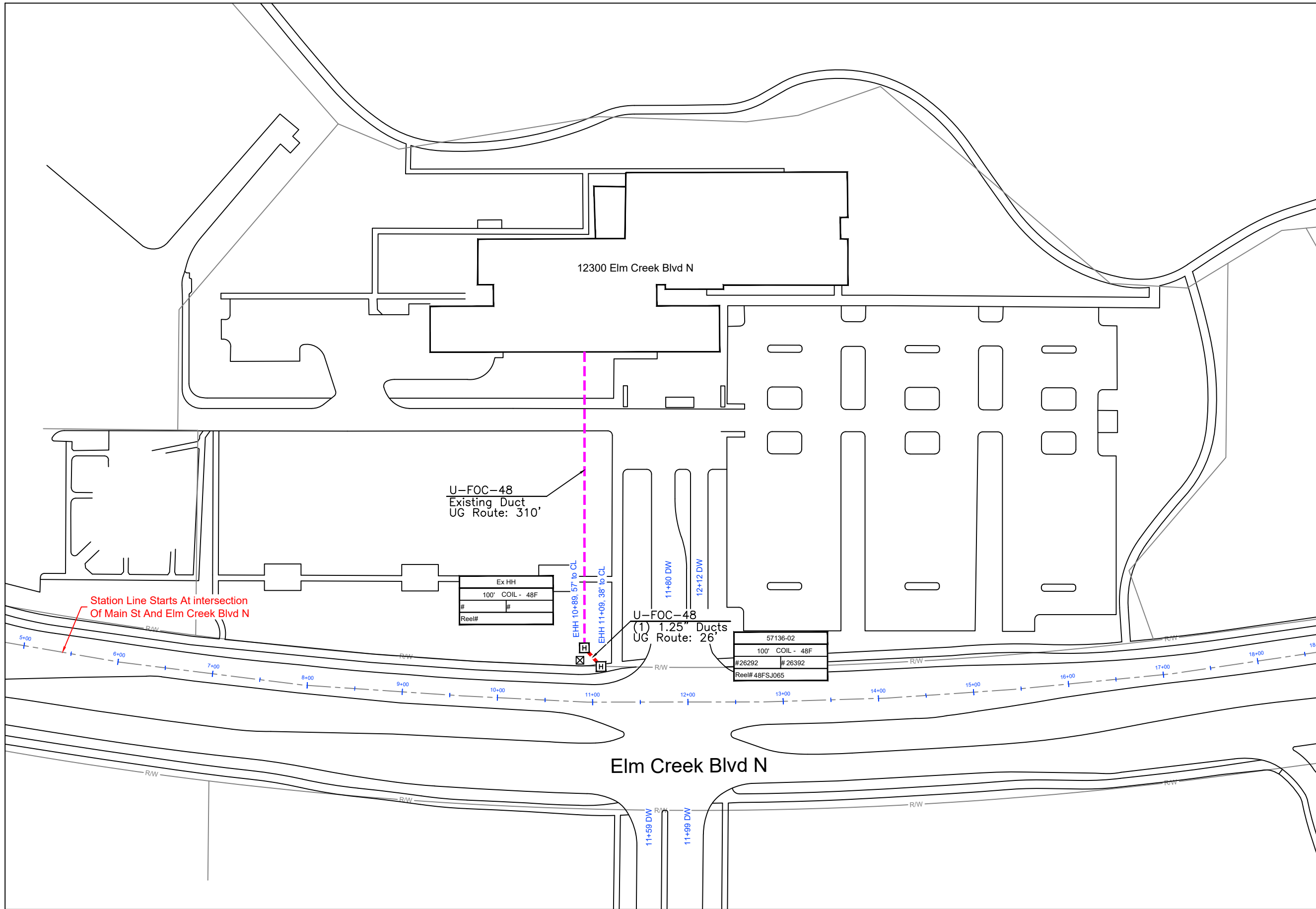
## GSOC

GOPHER STATE ONE CALL  
1-800-252-1116  
www.gopherstateonecall.org

Prepared by:



## Legend



1" = 100'

Route	-
City	Maple Grove, MN
County	Hennepin
Filename	Connexus Energy
Work Order #	69260



TRACKING	
Staked By:	-
Drafted By:	TJR 5/20/19
Built By:	-
As-Built By:	-
Revision	Rev #1 -

**GSOC**  
 GOPHER STATE ONE CALL  
 1-800-252-1116  
 www.gopherstateonecall.org

Prepared by:  
 compass consultants inc.  
 Perham, MN 218-346-3600  
 TrustCompass.com

69260-01