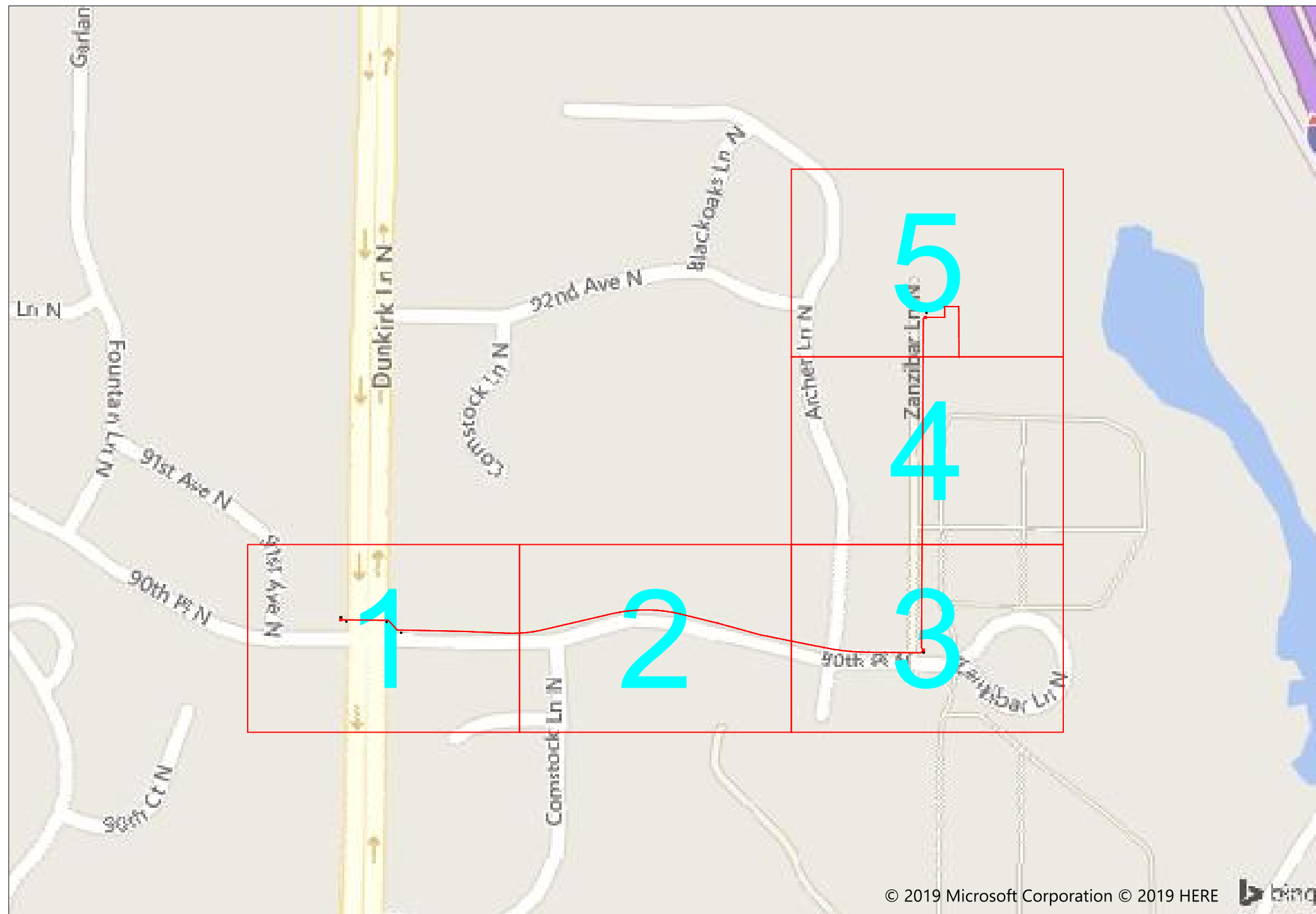


#69175 Sight and Surf Maple Village II



9150 Zanzibar Ln N, Maple Grove, MN 55311



1" = -

Route	Sight and Surf Maple
City	Maple Grove
County	Hennepin
Filename	Sight and Surf Maple Village II
Work Order #	#69175



TRACKING

Staked By:	-
Drafted By:	WJT 5/14/2019
Built By:	-
As-Built By:	-
Revision	Rev #1 -

Construction Totals	
Route Footage	2593
Total Underground	2593
Total Aerial	0
Underground (New)	2593
Aerial (New)	0
Overpull (Ex Duct)	0
Overlash (Ex Strand)	0
Plow	0
Bore	2593
New Vaults	3
New Peds	0

GSOC

GOPHER STATE ONE CALL
1-800-252-1116
www.gopherstateonecall.org

Prepared by:
 compass consultants inc.
Perham, MN 218-346-3600
TrustCompass.com

Overall

Legend

Fiber Linetypes

	Proposed Underground Fiber - Bore
	Proposed Underground Fiber - Plow
	Proposed UG Fiber in Existing Duct
	Existing Underground Fiber
	Proposed Aerial Fiber
	Proposed Aerial Overlash
	Existing Aerial Fiber
	Proposed Aerial Strand
	Existing Aerial Strand

Other Utility Linetypes

	Storm Sewer
	Sanitary Sewer
	Gas Line
	Tele./Comm. Line
	Water Line
	Electric Line
	Street light/Traffic signal
	District Cooling
	District Heating
	Force Main
	Other Utility or Unknown
	Utility Easement

Abbreviations

CL - Center Line
R/W - Right of Way
BOC - Back of Curb
FC - Front of Curb
EOR - Edge of Road
S/W - Sidewalk
HH - Handhole
MH - Manhole

Symbols

	Proposed Handhole
	Existing Handhole
	Reference Handhole
	Manhole
	Proposed Splice Point
	Existing Splice Point
	Power Pole
	Proposed Slack Coil
	Existing Slack Coil
	Proposed Anchor/Down Guy
	Existing Anchor/Down Guy
	Proposed Riser
	Existing Riser
	Aerial Bond
	Aerial Ground
	BM53T - Fiber Marker
	BM53 - Fiber Marker
	Tree
	Street Light
	Proposed PED
	Existing PED
	Proposed Splice Case
	Existing Splice Case

Construction Totals

Route Footage	2593
Total Underground	2593
Total Aerial	0
Underground (New)	2593
Aerial (New)	0
Overpull (Ex Duct)	0
Overlash (Ex Strand)	0
Plow	0
Bore	2593
New Vaults	3
New Peds	0

Fiber

TBD Fiber	0
12 Fiber	0
24 Fiber	0
36 Fiber	0
48 Fiber	2993
72 Fiber	0
96 Fiber	0
144 Fiber	0
288 Fiber	0
12 Dielectric Fiber	0
24 Dielectric Fiber	0
36 Dielectric Fiber	0
48 Dielectric Fiber	0
72 Dielectric Fiber	0
96 Dielectric Fiber	0
144 Dielectric Fiber	0
288 Dielectric Fiber	0

Materials

Duct (1.25")	4947
Vault(Small)	0
Vault (Medium)	3
Vault (Large)	0
PED BD5	0
Warning Sign	0
Locate Terminal	3
Ground Rod	3
Strand	0



1" = -

Route	Sight and Surf Maple
City	Maple Grove
County	Hennepin
Filename	Sight and Surf Maple Village II
Work Order #	#69175



TRACKING

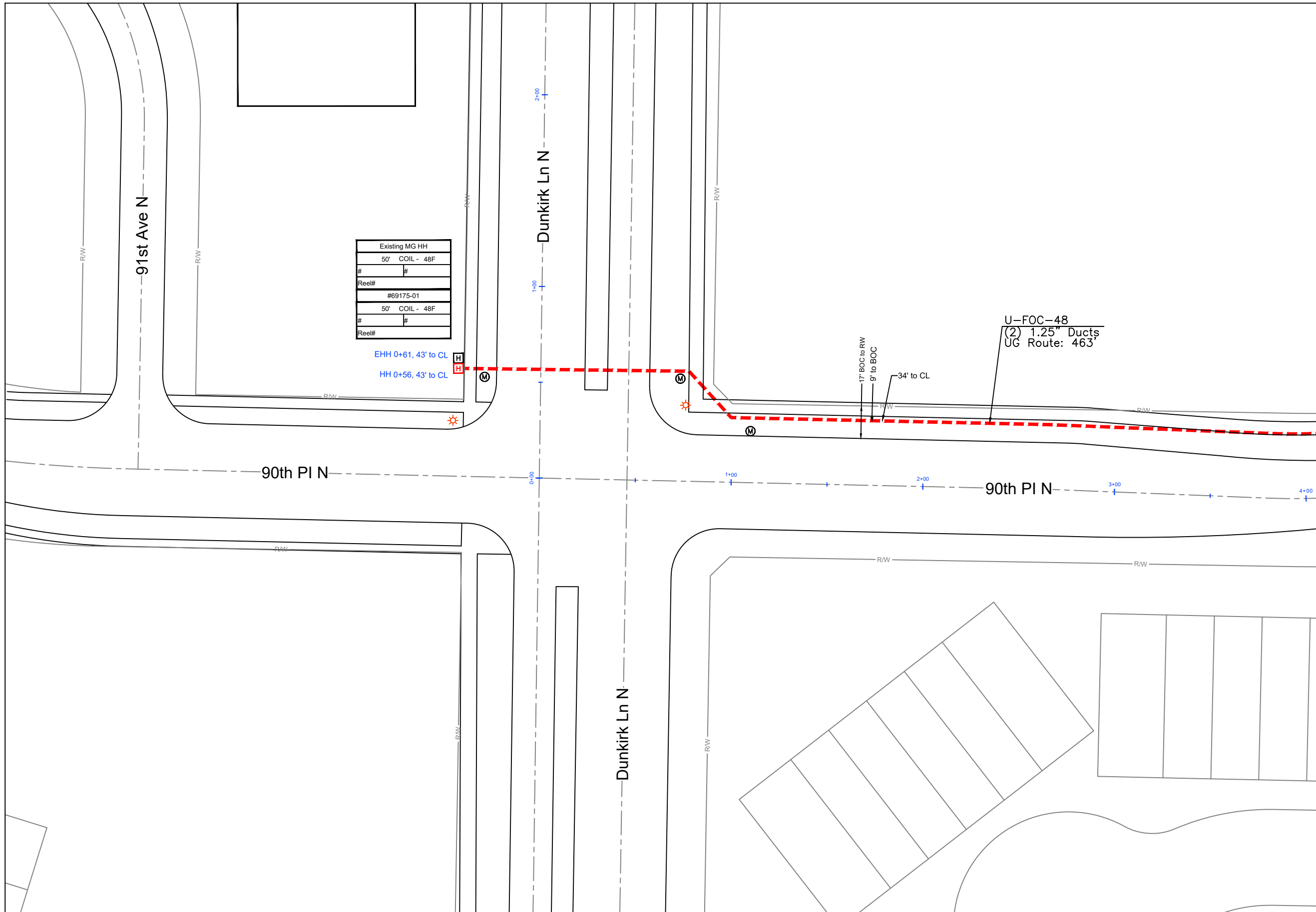
Staked By:	-
Drafted By:	WJT 5/14/2019
Built By:	-
As-Built By:	-
Revision	Rev #1 -

GSOC

GOPHER STATE ONE CALL
1-800-252-1116
www.gopherstateonecall.org



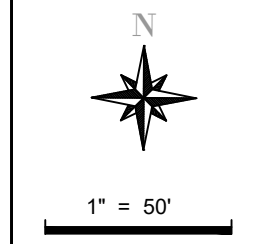
Legend



Existing MG HH	
50' COIL - 48F	#
Reel#	#
#69175-01	
50' COIL - 48F	#
Reel#	#

EHH 0+61, 43' to CL
 HH 0+56, 43' to CL

U-FOC-48
 (2) 1.25" Ducts
 UG Route: 463'



Route
Sight and Surf Maple

City
Maple Grove

County
Hennepin

Filename
Sight and Surf Maple Village II

Work Order #
#69175



TRACKING	
Staked By:	-
Drafted By:	WJT 5/14/2019
Built By:	-
As-Built By:	-
Revision	Rev #1 -

Sheet 2

GSOC
 GOPHER STATE ONE CALL
 1-800-252-1116
 www.gopherstateonecall.org

Prepared by:
 compass consultants inc.
 Perham, MN 218-346-3600
 TrustCompass.com

Sheet 1



1" = 50'

Route
Sight and Surf Maple

City
Maple Grove

County
Hennepin

Filename
Sight and Surf Maple Village II

Work Order #
#69175

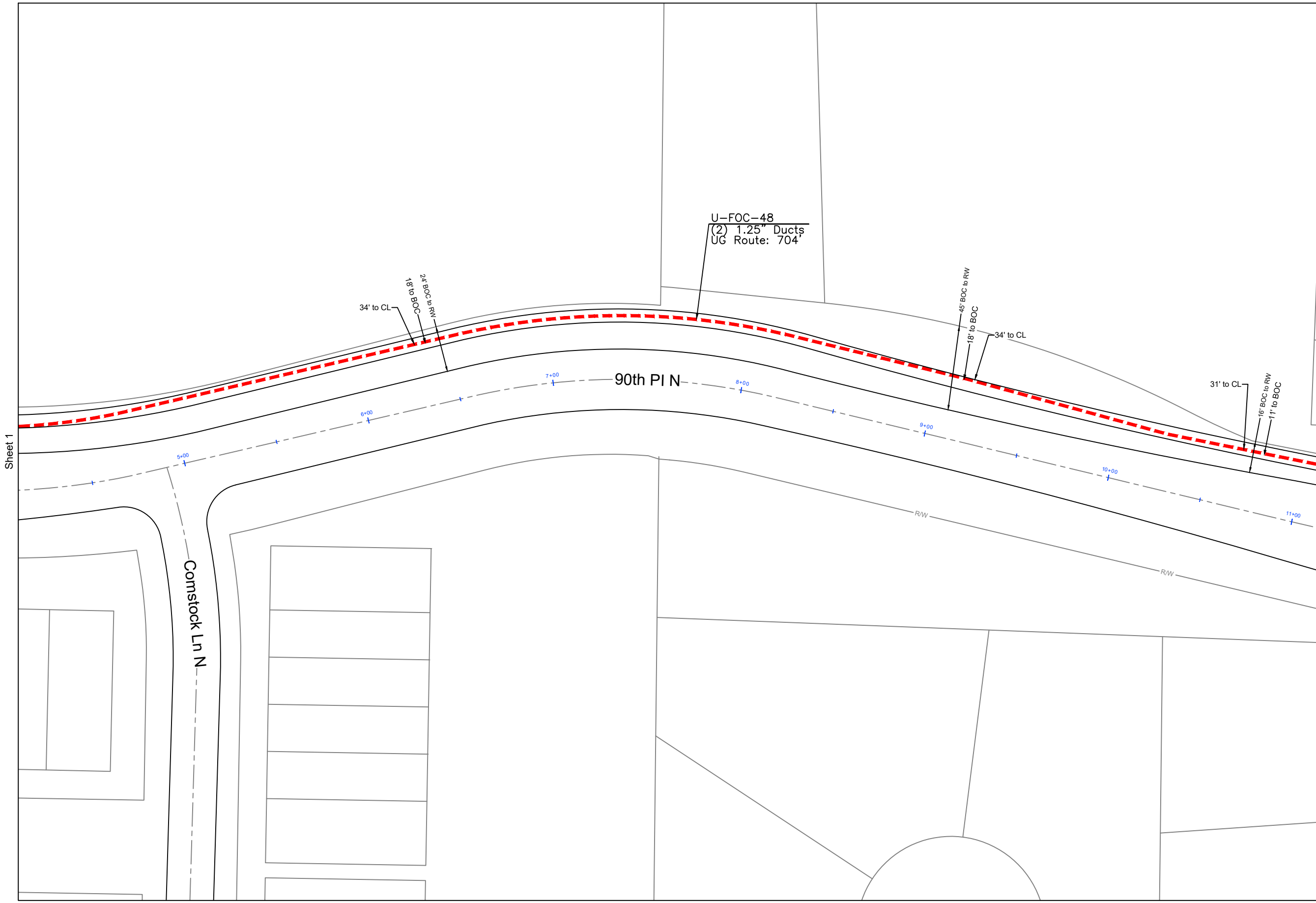


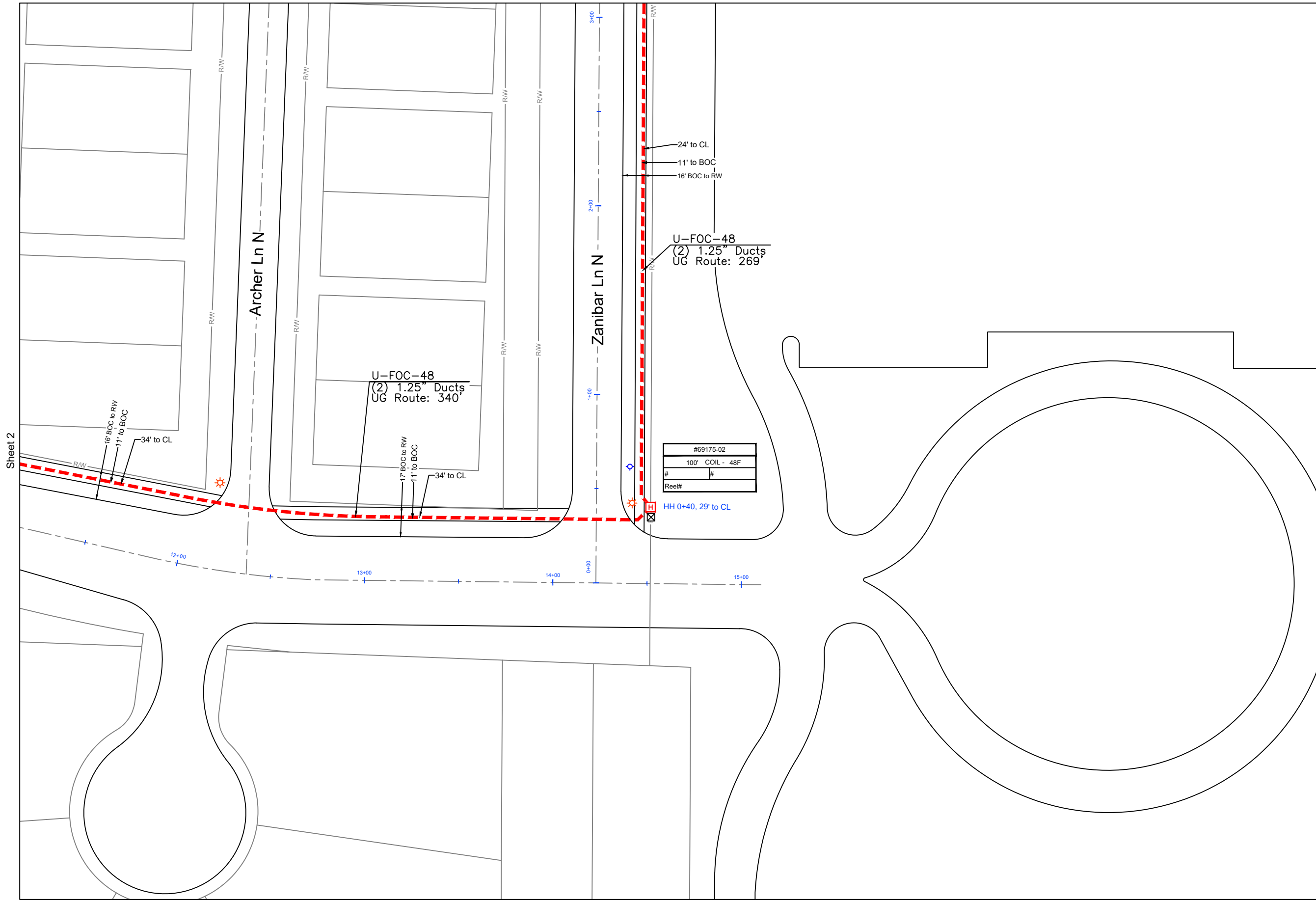
TRACKING	
Staked By:	-
Drafted By:	WJT 5/14/2019
Built By:	-
As-Built By:	-
Revision	Rev #1 -

GSOC
GOPHER STATE ONE CALL
1-800-252-1116
www.gopherstateonecall.org

Prepared by:
 **compass**
consultants inc.
Perham, MN 218-346-3600
TrustCompass.com

Sheet 2





Sheet 2

Archer Ln N

Zanibar Ln N

U-FOC-48
(2) 1.25" Ducts
UG Route: 340'

U-FOC-48
(2) 1.25" Ducts
UG Route: 269'

#69175-02
100' COIL - 48F
#
Reel#

HH 0+40, 29' to CL



1" = 50'

Route	Sight and Surf Maple
City	Maple Grove
County	Hennepin
Filename	Sight and Surf Maple Village II
Work Order #	#69175

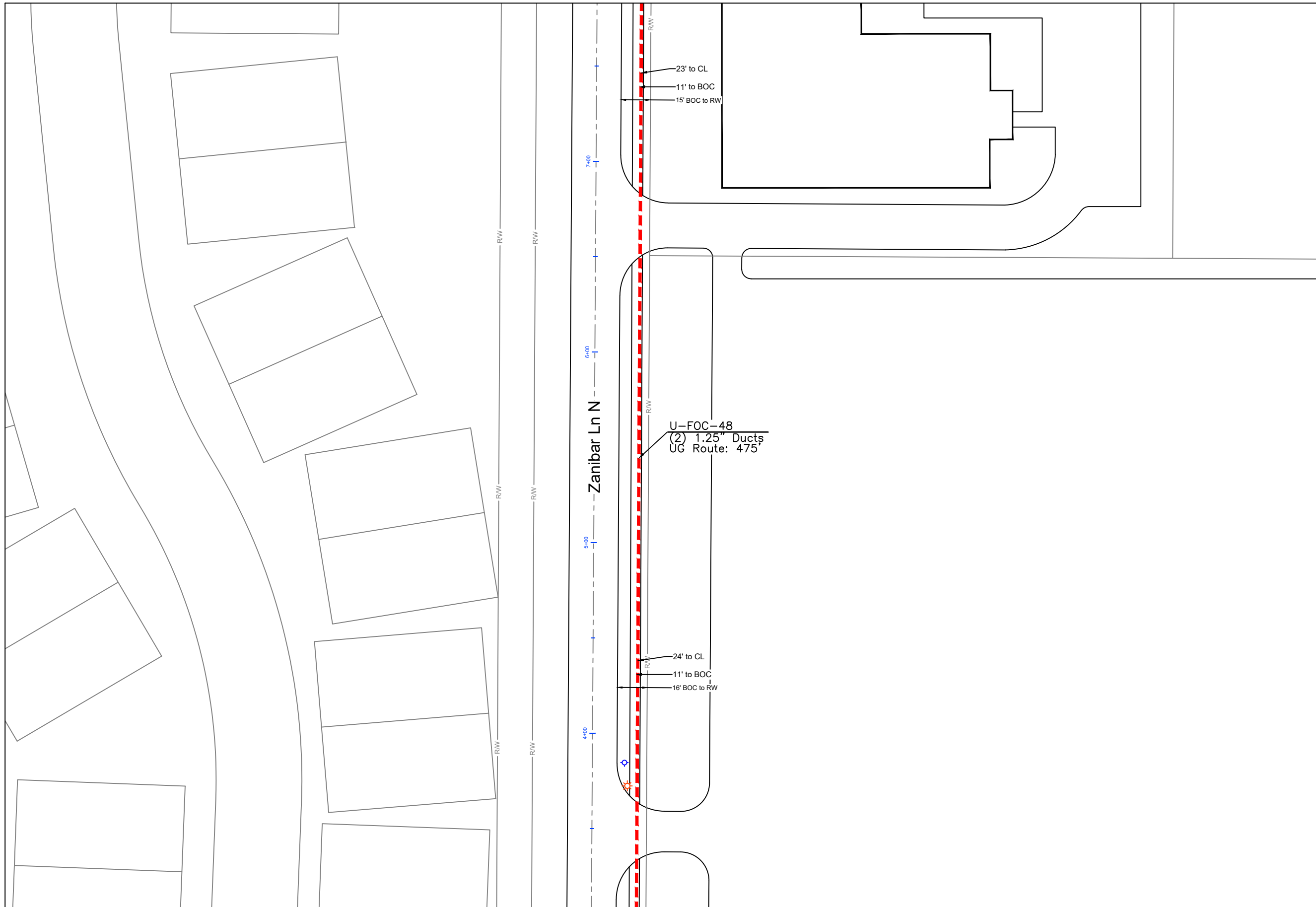


TRACKING	
Staked By:	-
Drafted By:	WJT 5/14/2019
Built By:	-
As-Built By:	-
Revision	Rev #1 -

GSOC
GOPHER STATE ONE CALL
1-800-252-1116
www.gopherstateonecall.org

Prepared by:
 compass consultants inc.
Perham, MN 218-346-3600
TrustCompass.com

Sheet 5



Sheet 3



1" = 50'

Route	Sight and Surf Maple
City	Maple Grove
County	Hennepin
Filename	Sight and Surf Maple Village II
Work Order #	#69175

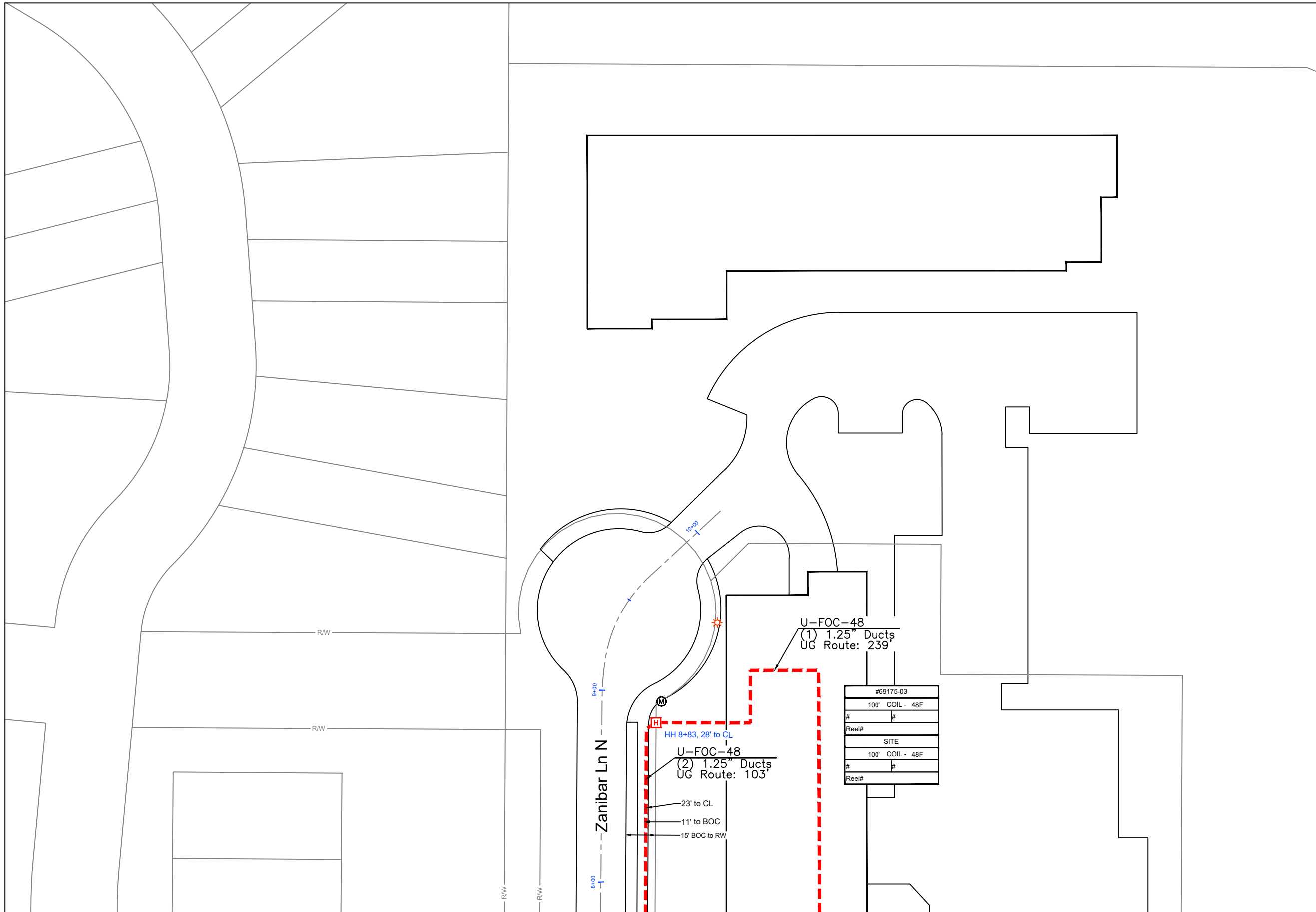


TRACKING	
Staked By:	-
Drafted By:	WJT 5/14/2019
Built By:	-
As-Built By:	-
Revision	Rev #1 -

GSOC
 GOPHER STATE ONE CALL
 1-800-252-1116
 www.gopherstateonecall.org

Prepared by:
 compass consultants inc.
 Perham, MN 218-346-3600
 TrustCompass.com

Sheet 4



Sheet 4



1" = 50'

Route
Sight and Surf Maple
City
Maple Grove
County
Hennepin
Filename
Sight and Surf Maple Village II
Work Order #
#69175



TRACKING

Staked By: -
Drafted By: WJT 5/14/2019
Built By: -
As-Built By: -
Revision
Rev #1 -

#69175-03
100' COIL - 48F
#
Reel#
SITE
100' COIL - 48F
#
Reel#

GSOC
GOPHER STATE ONE CALL
1-800-252-1116
www.gopherstateonecall.org

Prepared by:
 compass consultants inc.
Perham, MN 218-346-3600
TrustCompass.com

Sheet 5