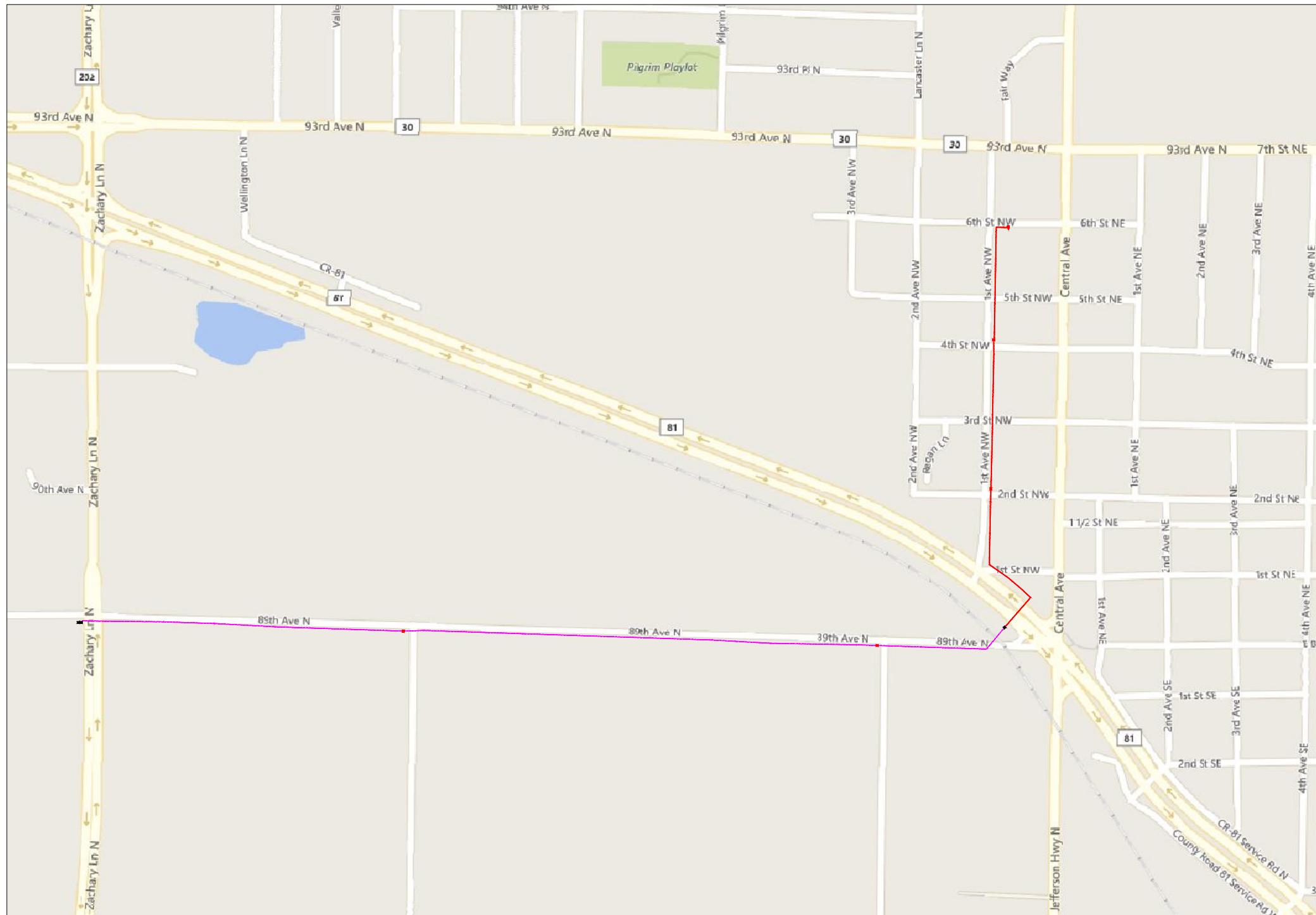


AMW 5 Central Apts



6th St NW



1" = -

Route	-
City	Osseo, MN
County	Hennepin
Filename	AMW 5 Central Apts
Work Order #	#68886



TRACKING

Staked By:	-
Drafted By:	TJR 4/29/19
Built By:	-
As-Built By:	-
Revision	Rev #1 -

Construction Totals	
Route Footage	7329
Total Underground	7329
Total Aerial	0
Underground (New)	2370
Aerial (New)	0
Overpull (Ex Duct)	4959
Overlash (Ex Strand)	0
Plow	0
Bore	2370
New Vaults	5
New Peds	0

GSOC
 GOPHER STATE ONE CALL
 1-800-252-1116
 www.gopherstateonecall.org

Prepared by:
 compass consultants inc.
 Perham, MN 218-346-3600
 TrustCompass.com

Overall

Legend

Fiber Linetypes

	Proposed Underground Fiber - Bore
	Proposed Underground Fiber - Plow
	Proposed UG Fiber in Existing Duct
	Existing Underground Fiber
	Proposed Aerial Fiber
	Proposed Aerial Overlash
	Existing Aerial Fiber
	Proposed Aerial Strand
	Existing Aerial Strand

Other Utility Linetypes

	Storm Sewer
	Sanitary Sewer
	Gas Line
	Tele./Comm. Line
	Water Line
	Electric Line
	Street light/Traffic signal
	District Cooling
	District Heating
	Force Main
	Other Utility or Unknown
	Utility Easement

Abbreviations

CL - Center Line
R/W - Right of Way
BOC - Back of Curb
FC - Front of Curb
EOR - Edge of Road
S/W - Sidewalk
HH - Handhole
MH - Manhole

Symbols

	Proposed Handhole
	Existing Handhole
	Reference Handhole
	Manhole
	Proposed Splice Point
	Existing Splice Point
	Power Pole
	Proposed Slack Coil
	Existing Slack Coil
	Proposed Anchor/Down Guy
	Existing Anchor/Down Guy
	Proposed Riser
	Existing Riser
	Aerial Bond
	Aerial Ground
	BM53T - Fiber Marker
	BM53 - Fiber Marker
	Tree
	Street Light
	Proposed PED
	Existing PED
	Proposed Splice Case
	Existing Splice Case

Construction Totals

Route Footage	7329
Total Underground	7329
Total Aerial	0
Underground (New)	2370
Aerial (New)	0
Overpull (Ex Duct)	4959
Overlash (Ex Strand)	0
Plow	0
Bore	2370
New Vaults	5
New Peds	0

Fiber

TBD Fiber	0
12 Fiber	0
24 Fiber	0
36 Fiber	88
48 Fiber	7801
72 Fiber	0
96 Fiber	65
144 Fiber	0
288 Fiber	0
12 Dielectric Fiber	0
24 Dielectric Fiber	0
36 Dielectric Fiber	0
48 Dielectric Fiber	0
72 Dielectric Fiber	0
96 Dielectric Fiber	0
144 Dielectric Fiber	0
288 Dielectric Fiber	0

Materials

Duct (1.25")	4712
Vault(Small)	0
Vault (Medium)	5
Vault (Large)	0
PED BD5	0
Warning Sign	0
Locate Terminal	5
Ground Rod	5
Strand	0



1" = -

Route	-
City	Osseo, MN
County	Hennepin
Filename	AMW 5 Central Apts
Work Order #	#68886



TRACKING

Staked By:	-
Drafted By:	TJR 4/29/19
Built By:	-
As-Built By:	-
Revision	Rev #1 -

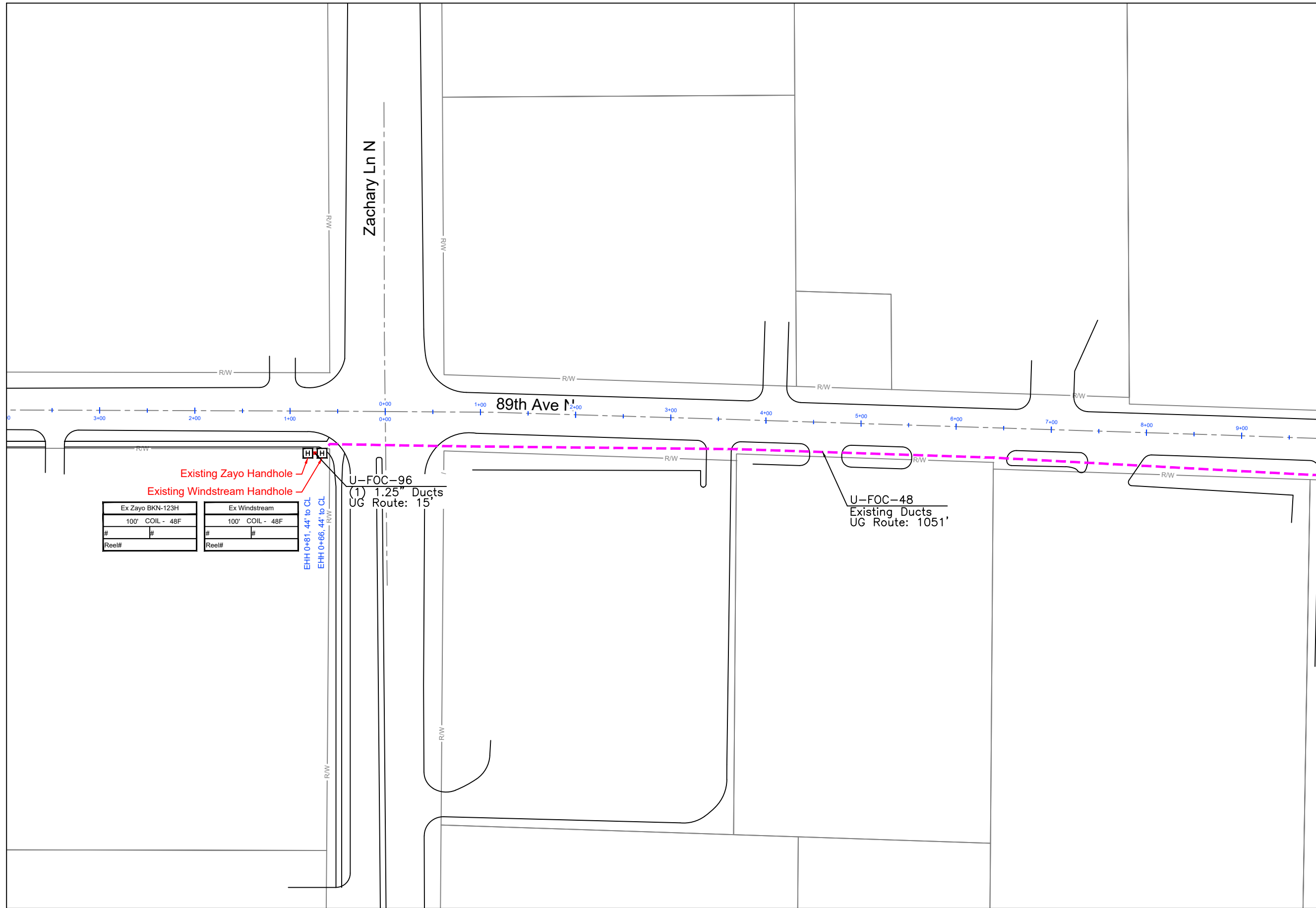
GSOC

GOPHER STATE ONE CALL
1-800-252-1116
www.gopherstateonecall.org

Prepared by:



Legend



Ex Zayo BKN-123H		Ex Windstream	
100'	COIL - 48F	100'	COIL - 48F
#	#	#	#
Reel#		Reel#	

EHH 0+81.44' to CL
EHH 0+66.44' to CL

U-FOC-96
(1) 1.25" Ducts
UG Route: 15'

U-FOC-48
Existing Ducts
UG Route: 1051'



1" = 100'

Route	-
City	Osseo, MN
County	Hennepin
Filename	AMW 5 Central Apts
Work Order #	#68886

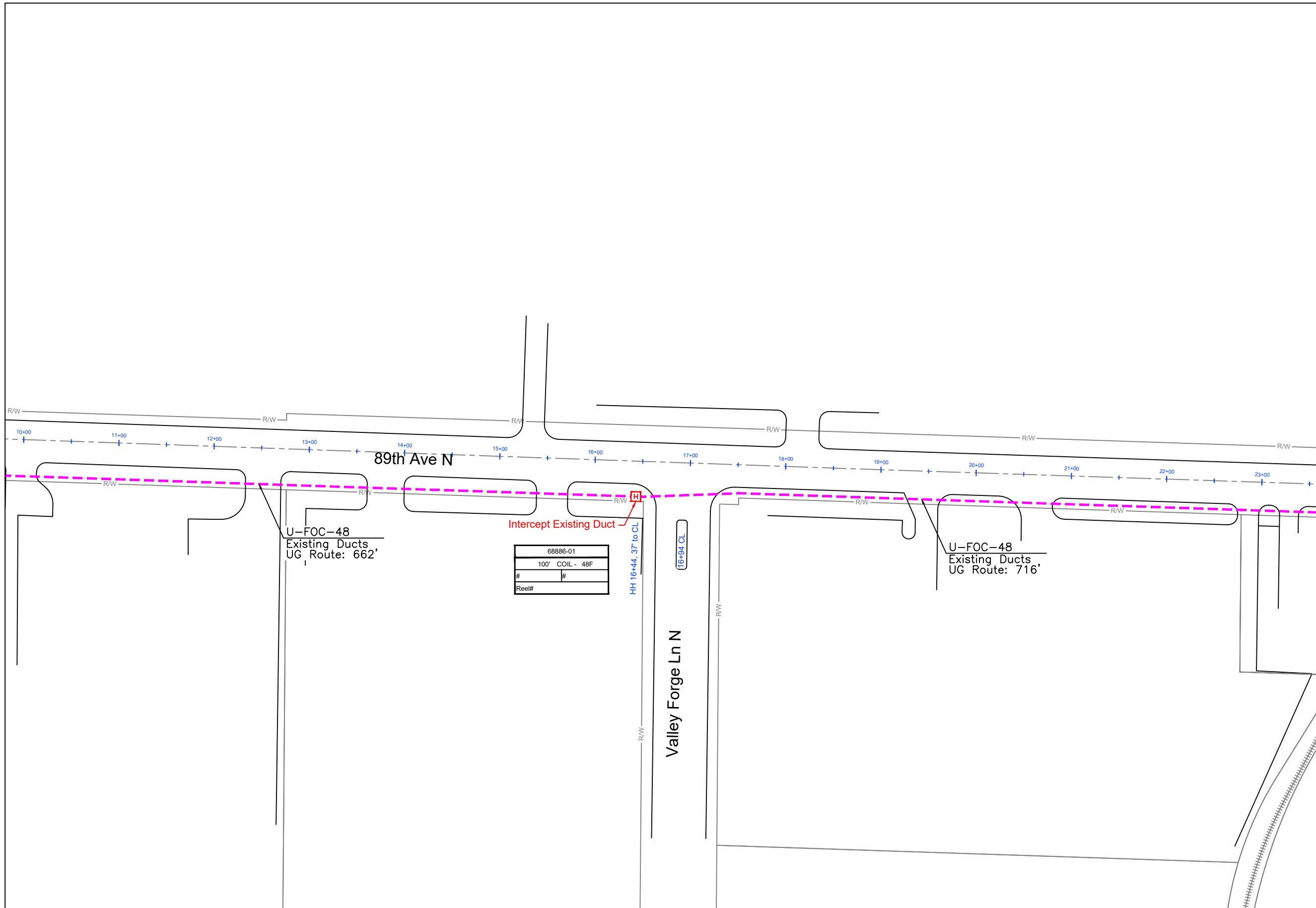


TRACKING	
Staked By:	-
Drafted By:	TJR 4/29/19
Built By:	-
As-Built By:	-
Revision	Rev #1 -

GSOC
GOPHER STATE ONE CALL
1-800-252-1116
www.gopherstateonecall.org

Prepared by:
 compass consultants inc.
Perham, MN 218-346-3600
TrustCompass.com

68886-01



1" = 100'

Route	-
City	Osseo, MN
County	Hennepin
Filename	AMW 5 Central Apts
Work Order #	#68886



TRACKING	
Staked By:	-
Drafted By:	TJR 4/29/19
Built By:	-
As-Built By:	-
Revision	Rev #1 -

U-FOC-48
Existing Ducts
UG Route: 662'

Intercept Existing Duct

68886-01	
100' COIL - 48F	
#	#
Reel#	

HH 16+44.37' to CL
T6+94 CL

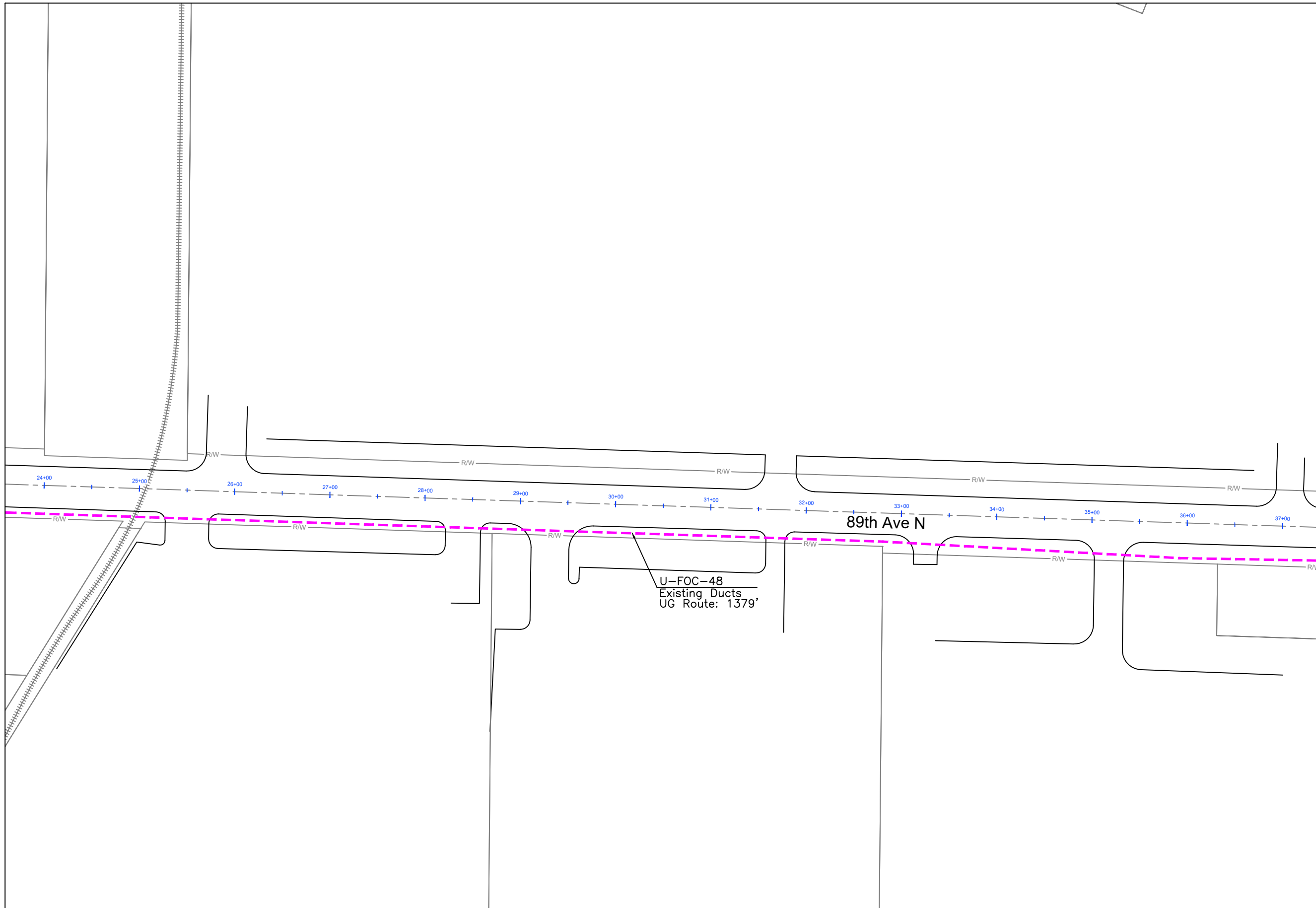
U-FOC-48
Existing Ducts
UG Route: 716'

Valley Forge Ln N

GSOC
GOPHER STATE ONE CALL
1-800-252-1116
www.gopherstateonecall.org

Prepared by:
 compass consultants inc.
Perham, MN 218-346-3600
TrustCompass.com

68886-02



1" = 100'

Route	-
City	Osseo, MN
County	Hennepin
Filename	AMW 5 Central Apts
Work Order #	#68886

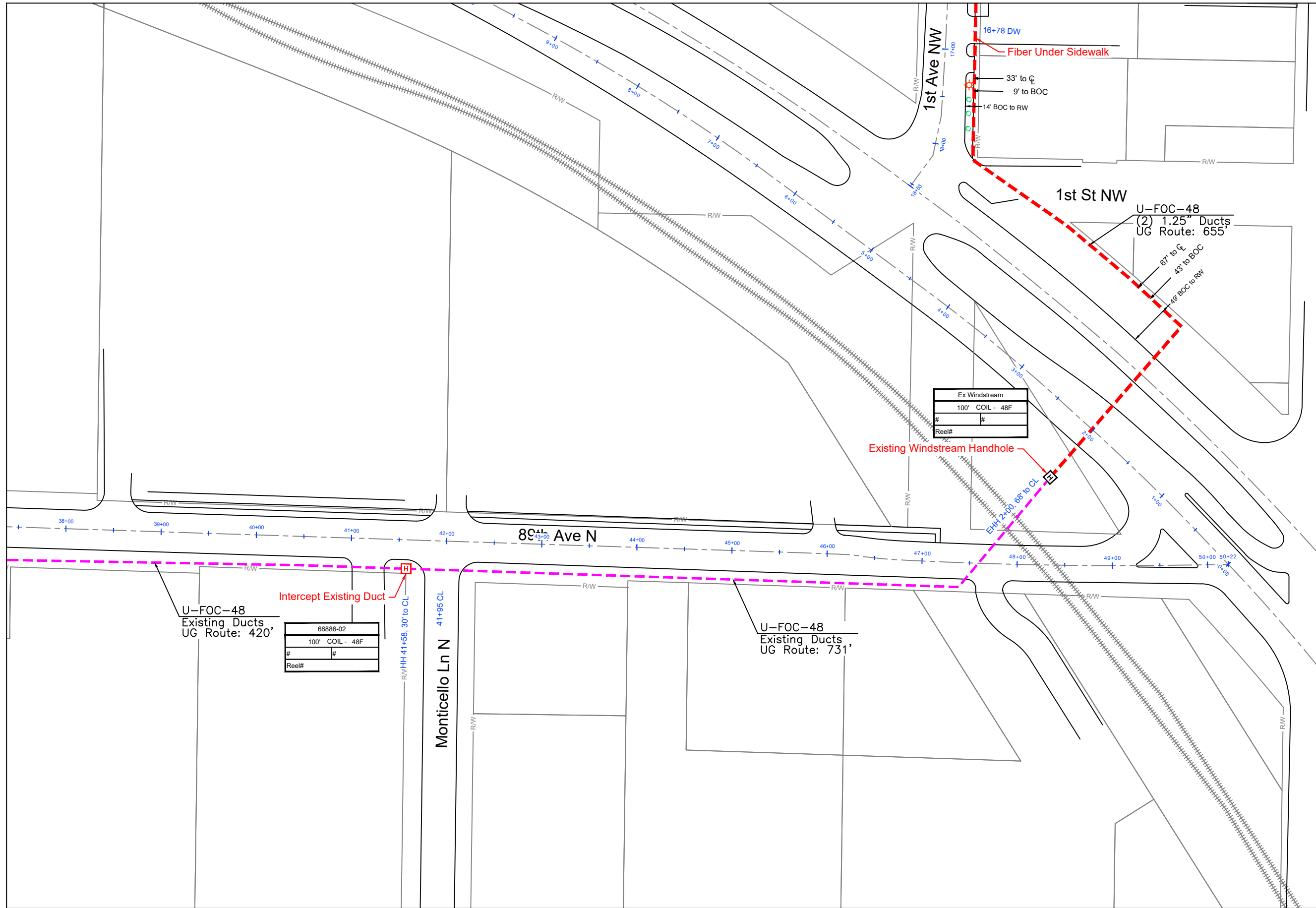


TRACKING	
Staked By:	-
Drafted By:	TJR 4/29/19
Built By:	-
As-Built By:	-
Revision	Rev #1 -

GSOC
GOPHER STATE ONE CALL
1-800-252-1116
www.gopherstateonecall.org

Prepared by:
 compass consultants inc.
Perham, MN 218-346-3600
TrustCompass.com

68886-03



1" = 100'

Route	-
City	Osseo, MN
County	Hennepin
Filename	AMW 5 Central Apts
Work Order #	#68886

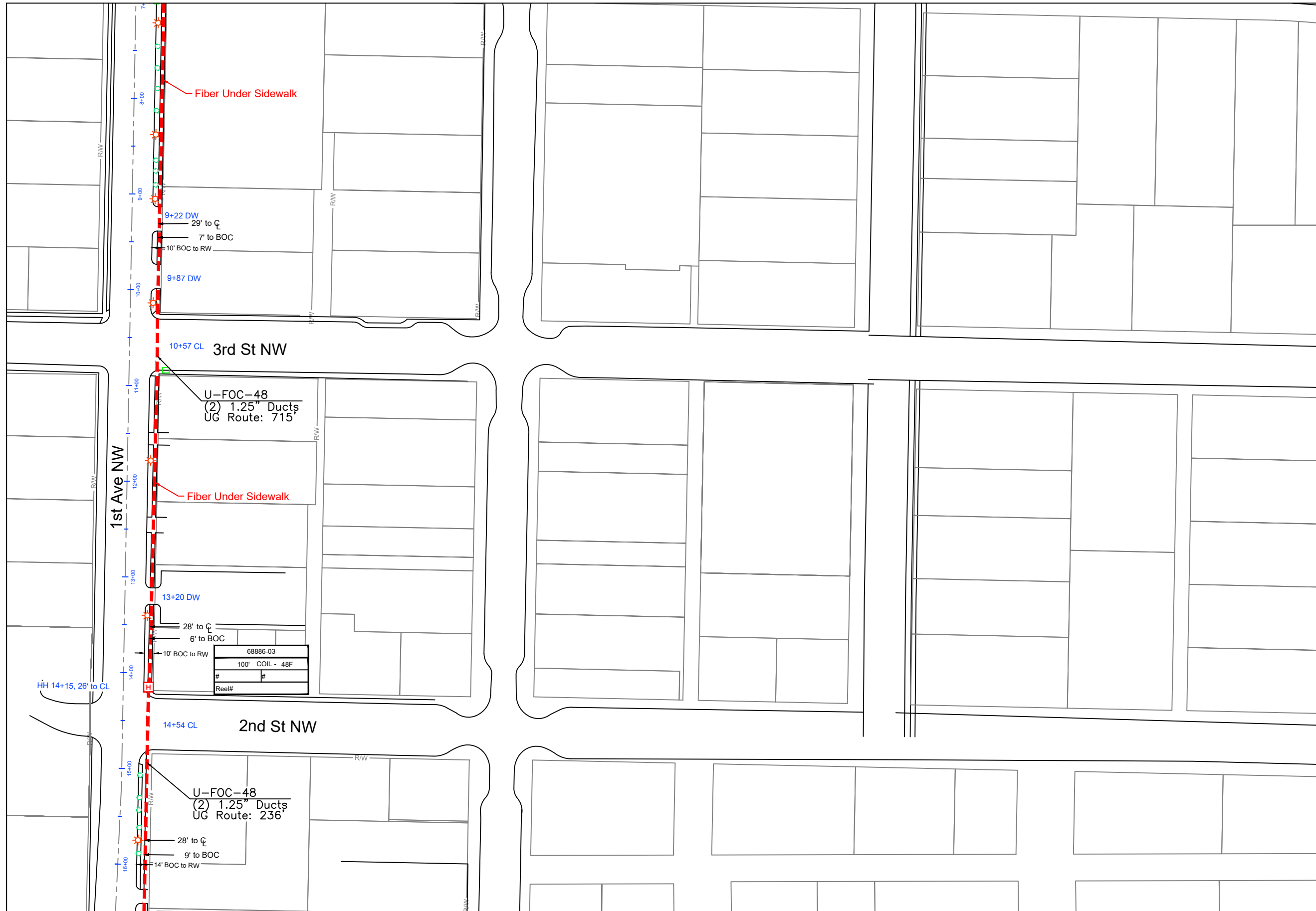


TRACKING	
Staked By:	-
Drafted By:	TJR 4/29/19
Built By:	-
As-Built By:	-
Revision	Rev #1 -

GSOC
 GOPHER STATE ONE CALL
 1-800-252-1116
 www.gopherstateonecall.org

Prepared by:
 compass consultants inc.
 Perham, MN 218-346-3600
 TrustCompass.com

68886-04



1" = 100'

Route	-
City	Osseo, MN
County	Hennepin
Filename	AMW 5 Central Apts
Work Order #	#68886



TRACKING

Staked By:	-
Drafted By:	TJR 4/29/19
Built By:	-
As-Built By:	-
Revision	Rev #1 -

U-FOC-48
(2) 1.25" Ducts
UG Route: 715'

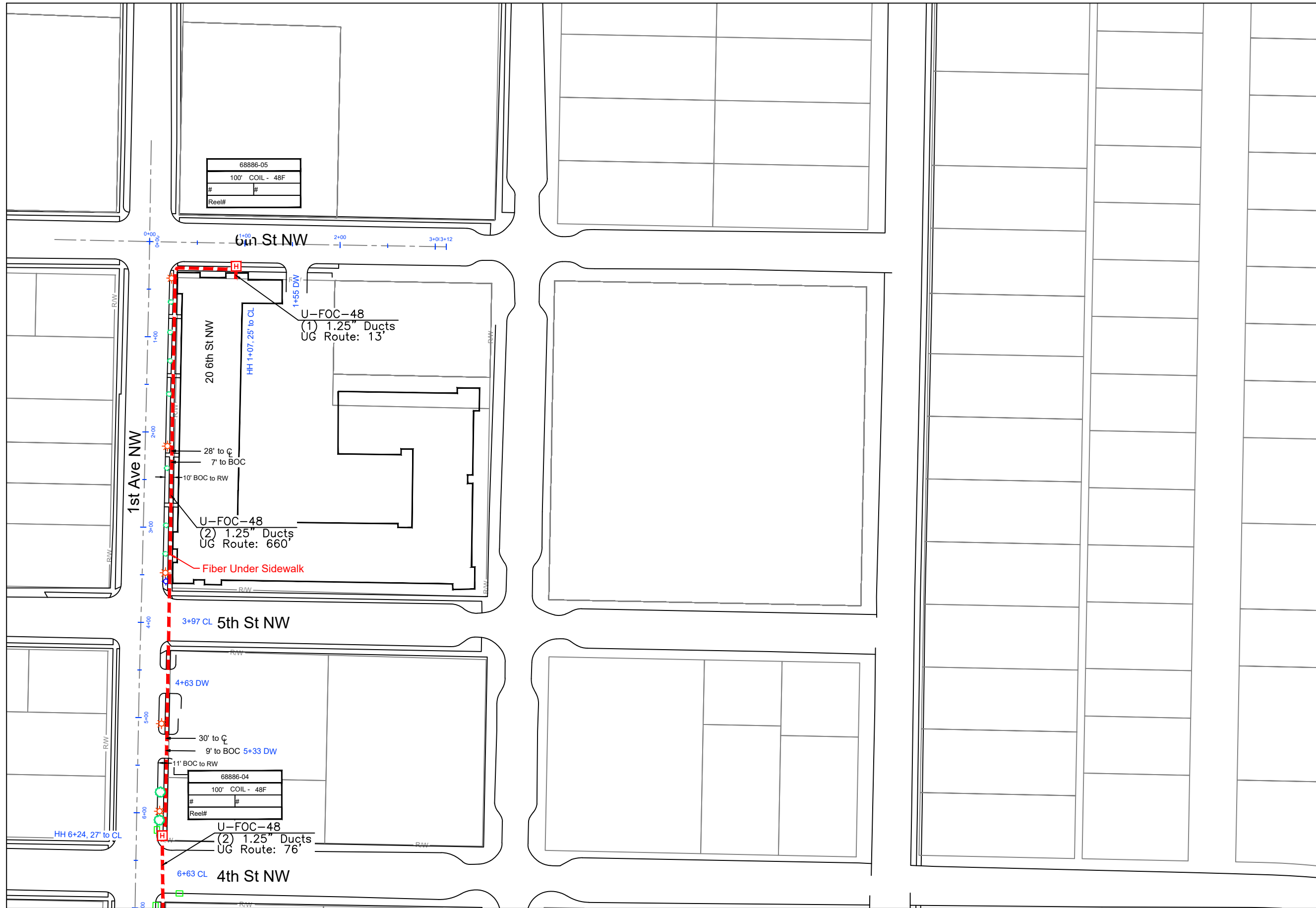
68886-03	
100' COIL - 48F	
#	#
Reel#	

U-FOC-48
(2) 1.25" Ducts
UG Route: 236'

GSOC
GOPHER STATE ONE CALL
1-800-252-1116
www.gopherstateonecall.org

Prepared by:
 **compass**
consultants inc.
Perham, MN 218-346-3600
TrustCompass.com

68886-05



68886-05
100' COIL - 48F
#
Reel#

68886-04
100' COIL - 48F
#
Reel#



1" = 100'

Route	-
City	Osseo, MN
County	Hennepin
Filename	AMW 5 Central Apts
Work Order #	#68886



TRACKING	
Staked By:	-
Drafted By:	TJR 4/29/19
Built By:	-
As-Built By:	-
Revision	Rev #1 -

GSOC
 GOPHER STATE ONE CALL
 1-800-252-1116
 www.gopherstateonecall.org

Prepared by:
 compass consultants inc.
 Perham, MN 218-346-3600
 TrustCompass.com

68886-06