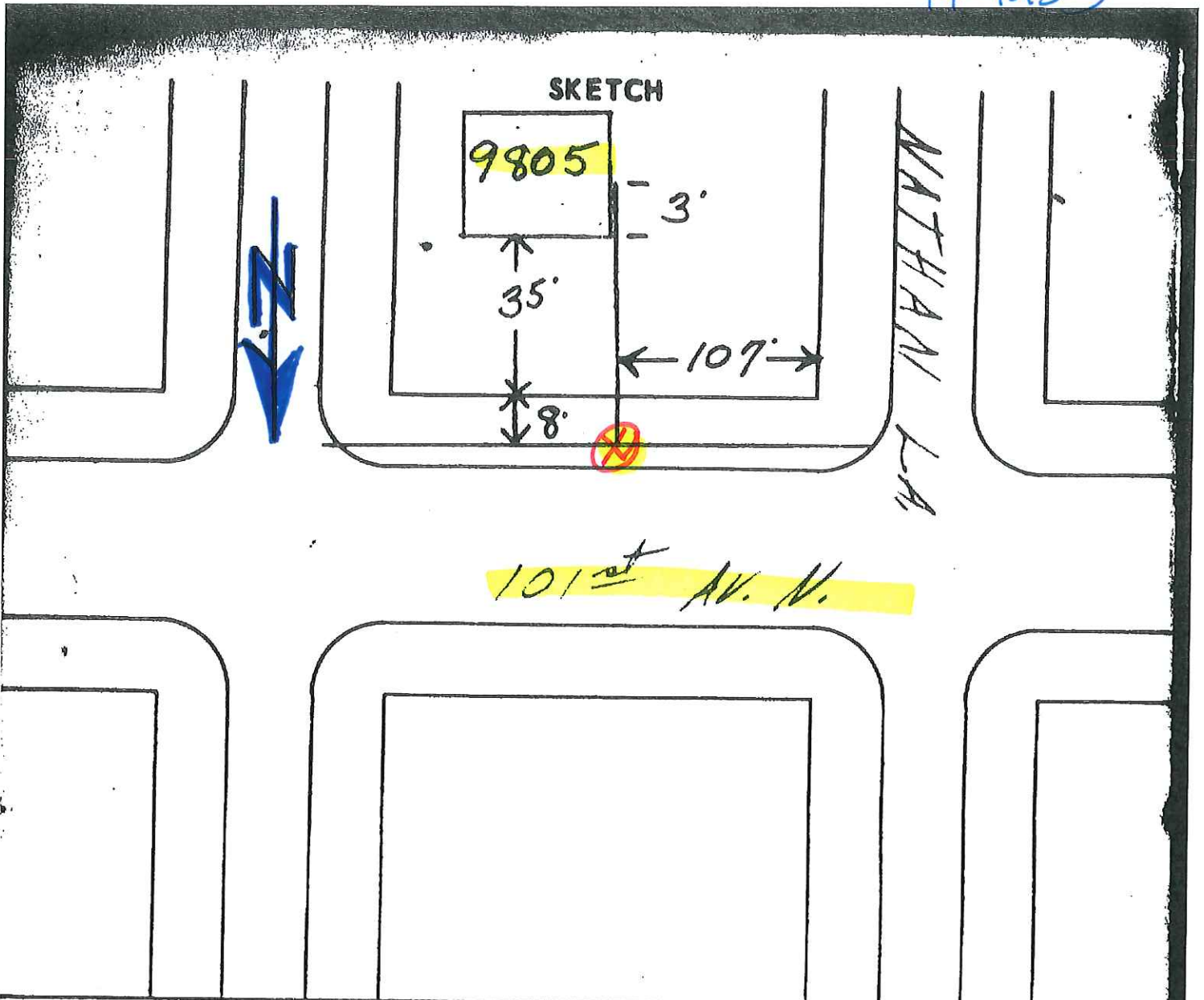


19-1253



**Surface Disturbed at Main**

- Concrete
- Bituminous
- Oiled
- Other \_\_\_\_\_
- Boulevard

**Basement**  
Yes  No

**Building**  
Old  New

**Casing**  
Yes  No

Show casing on sketch

**Coatings**  
Steel Pipe:

- Cor-Bond
- Scotchkote #202
- X-Thru-Coat
- Coal Tar Enamel
- Flexclad
- Other \_\_\_\_\_

**Fittings:**  
Black Mastic   
Plastic Tape

Soil Clay

**Valve in Roadway Cover**  
Yes  No

Type \_\_\_\_\_ Size \_\_\_\_\_  
Valve loc. Blvd.  Str.   
Main loc. Blvd.  Str.

\_\_\_\_\_ ft.  
\_\_\_\_\_ ft.

**Service Location**

- Right
- Left
- Front