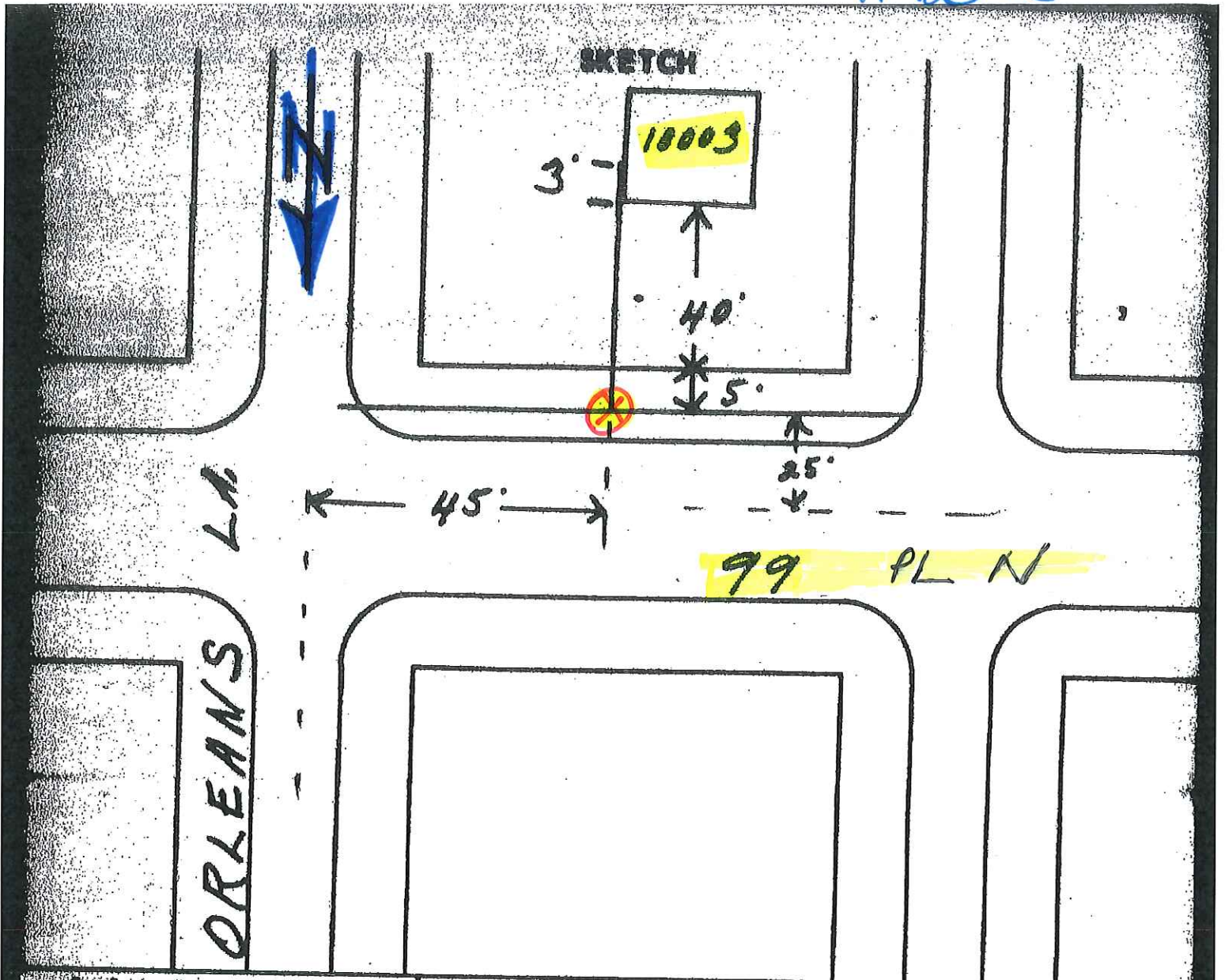


19-1252



Surface Disturbed at Main

- Concrete
- Bituminous
- Oiled
- Other \_\_\_\_\_
- Boulevard

Basement

Yes  No

Building

Old  New

Casing

Yes  No

Show casing on sketch

Coatings Steel Pipe:

- Cor-Bond
- Scotchkote #202
- X-Thru-Coat
- Coal Tar Enamel
- Flexclad
- Other \_\_\_\_\_

Fittings:

- Black Mastic
- Plastic Tape

Soil Sand

Valve in Roadway Cover

Yes  No

Type \_\_\_\_\_ Size \_\_\_\_\_

Valve loc. Blvd.  Str.

Main loc. Blvd.  Str.

\_\_\_ ft. \_\_\_\_\_  
\_\_\_ ft. \_\_\_\_\_

Service Location

- Right
- Left
- Front