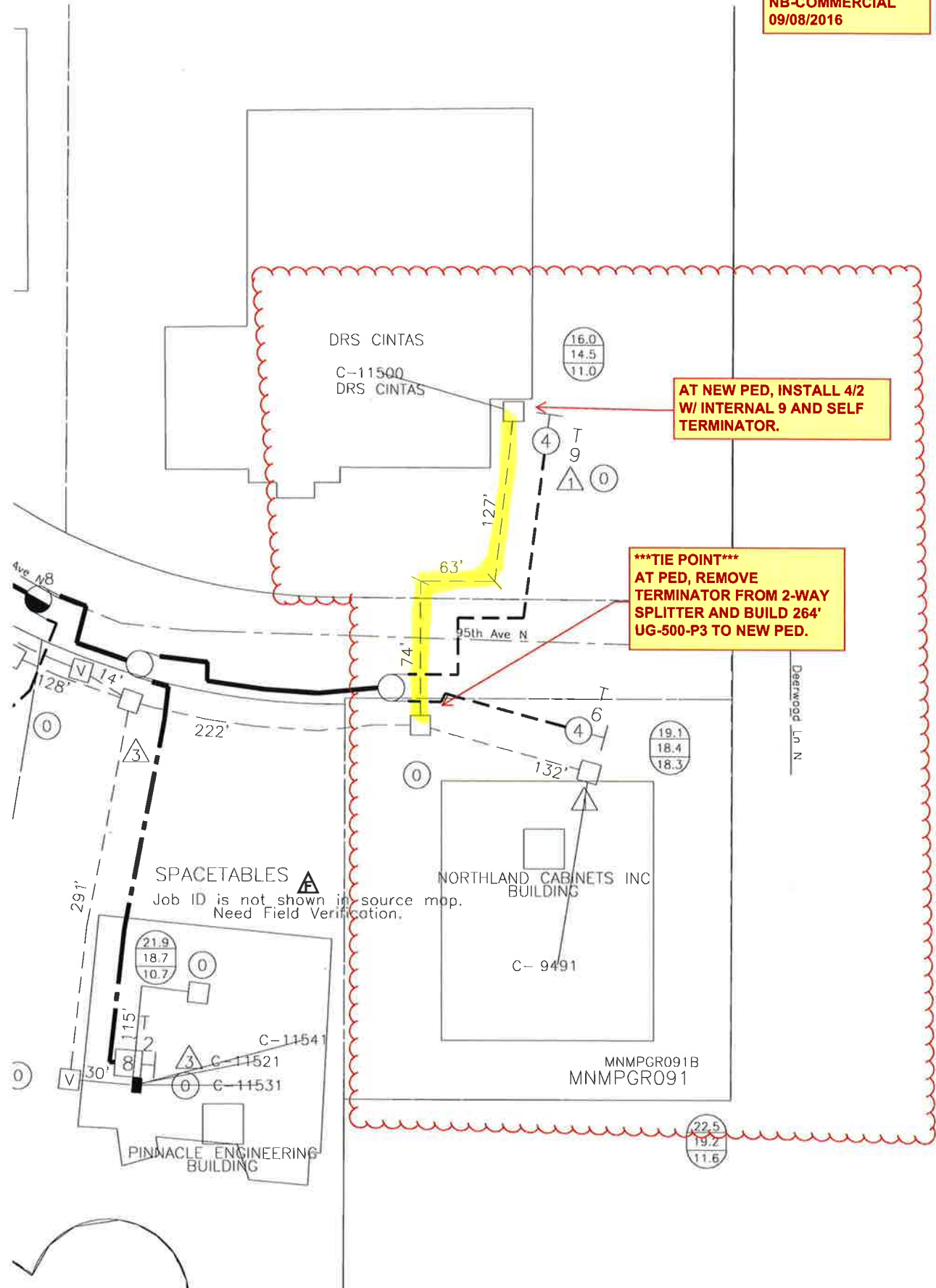


DC170 (MNMPGR091)
 JT#20514
 DRS-CINTAS
 11500 95TH AVE N
 NB-COMMERCIAL
 09/08/2016



**AT NEW PED, INSTALL 4/2
 W/ INTERNAL 9 AND SELF
 TERMINATOR.**

*****TIE POINT***
 AT PED, REMOVE
 TERMINATOR FROM 2-WAY
 SPLITTER AND BUILD 264'
 UG-500-P3 TO NEW PED.**

SPACETABLES
 Job ID is not shown in source map.
 Need Field Verification.

MNMPGR091B
 MNMPGR091