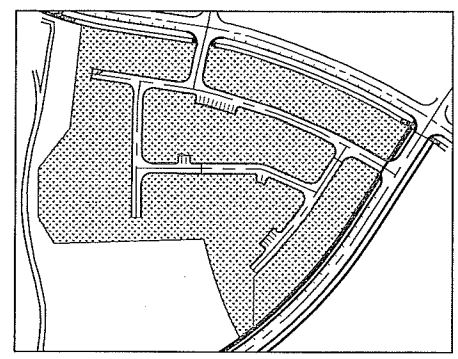


TEMPORARY SEED SHALL BE DONE IN ACCORDANCE TO MNDOT 2575 & 3876. CONSISTING OF:

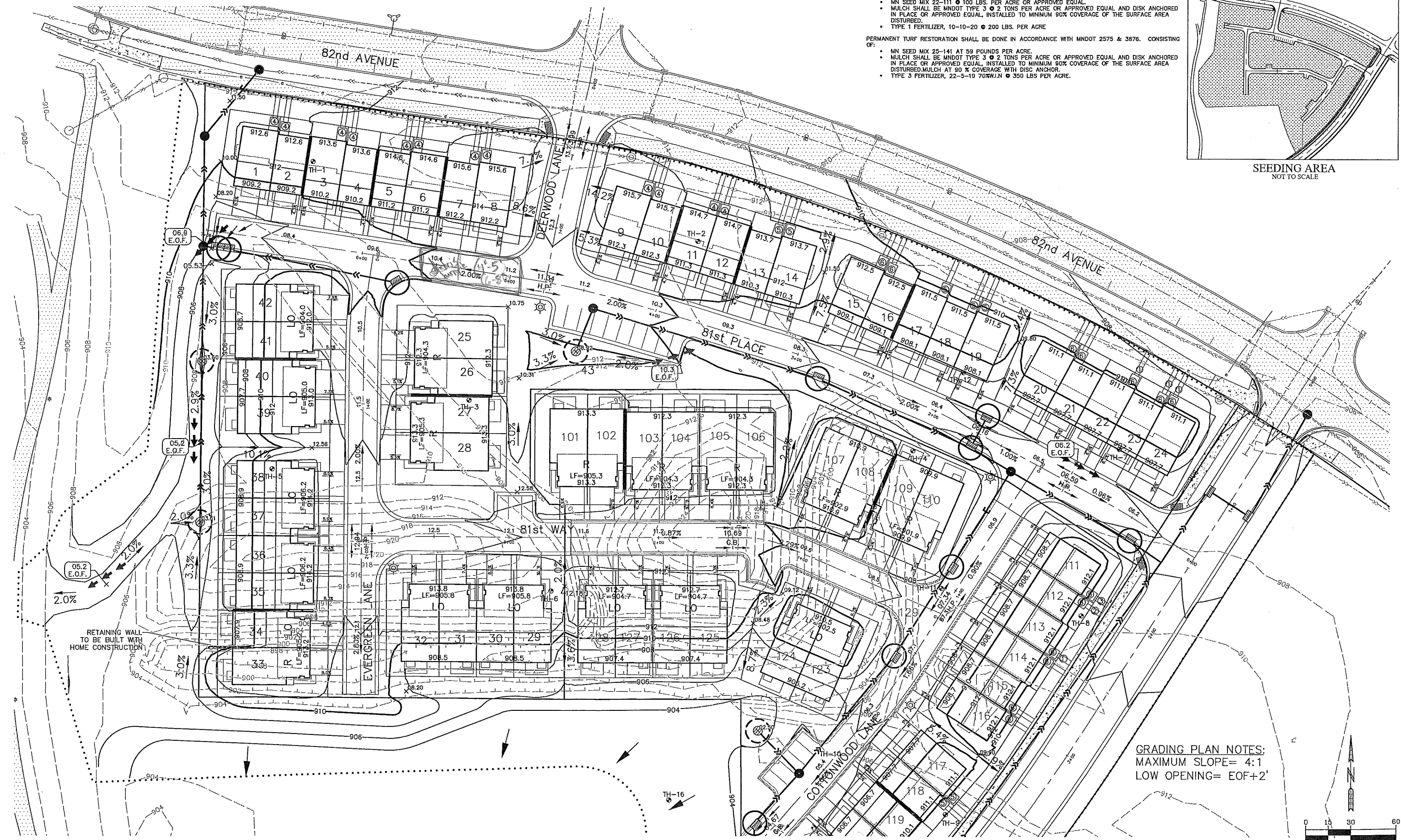
- MN SEED MIX 22-111 @ 100 LBS. PER ACRE OR APPROVED EQUAL.
- MULCH SHALL BE MNDOT TYPE 3 @ 2 TONS PER ACRE OR APPROVED EQUAL AND DISK ANCHORED IN PLACE OR APPROVED EQUAL, INSTALLED TO MINIMUM 90% COVERAGE OF THE SURFACE AREA DISTURBED.
- TYPE 1 FERTILIZER, 10-10-20 @ 200 LBS. PER ACRE.

PERMANENT TURF RESTORATION SHALL BE DONE IN ACCORDANCE WITH MNDOT 2575 & 3876. CONSISTING OF:

- MN SEED MIX 25-141 AT 59 POUNDS PER ACRE.
- MULCH SHALL BE MNDOT TYPE 3 @ 2 TONS PER ACRE OR APPROVED EQUAL AND DISK ANCHORED IN PLACE OR APPROVED EQUAL, INSTALLED TO MINIMUM 90% COVERAGE OF THE SURFACE AREA DISTURBED.
- TYPE 3 FERTILIZER, 22-5-10 70%W.N @ 350 LBS PER ACRE.



SEEDING AREA
NOT TO SCALE



PIONEERengineering
CIVIL ENGINEERS LAND PLANNERS LAND SURVEYORS LANDSCAPE ARCHITECTS

2422 Enterprise Drive
Mendota Heights, MN 55120
(651) 681-1914
Fax: 681-9488
www.pioneereng.com

I hereby certify that this plan was prepared by me or under my direct supervision and that I am a duly Licensed Professional Engineer under the laws of the State of Minnesota.
Name: *Paul A. Herms*
Reg. No. 18372 Date: 04-11-2016

Revisions:
1. 7-5-16 Remove WM & SAN Plans
2. 7-1-16 City Comments
3. 7-27-16 Adjust Building Steps

Date: 4-11-16
Designed: PAT
Drawn: AJR

GRADING PLAN

CALATLANTIC HOMES
7599 ANAGRAM DRIVE
EDEN PRAIRIE, MINNESOTA 55344

WATERS EDGE AT CENTRAL PARK
MAPLE GROVE, MINNESOTA

C5 OF C13