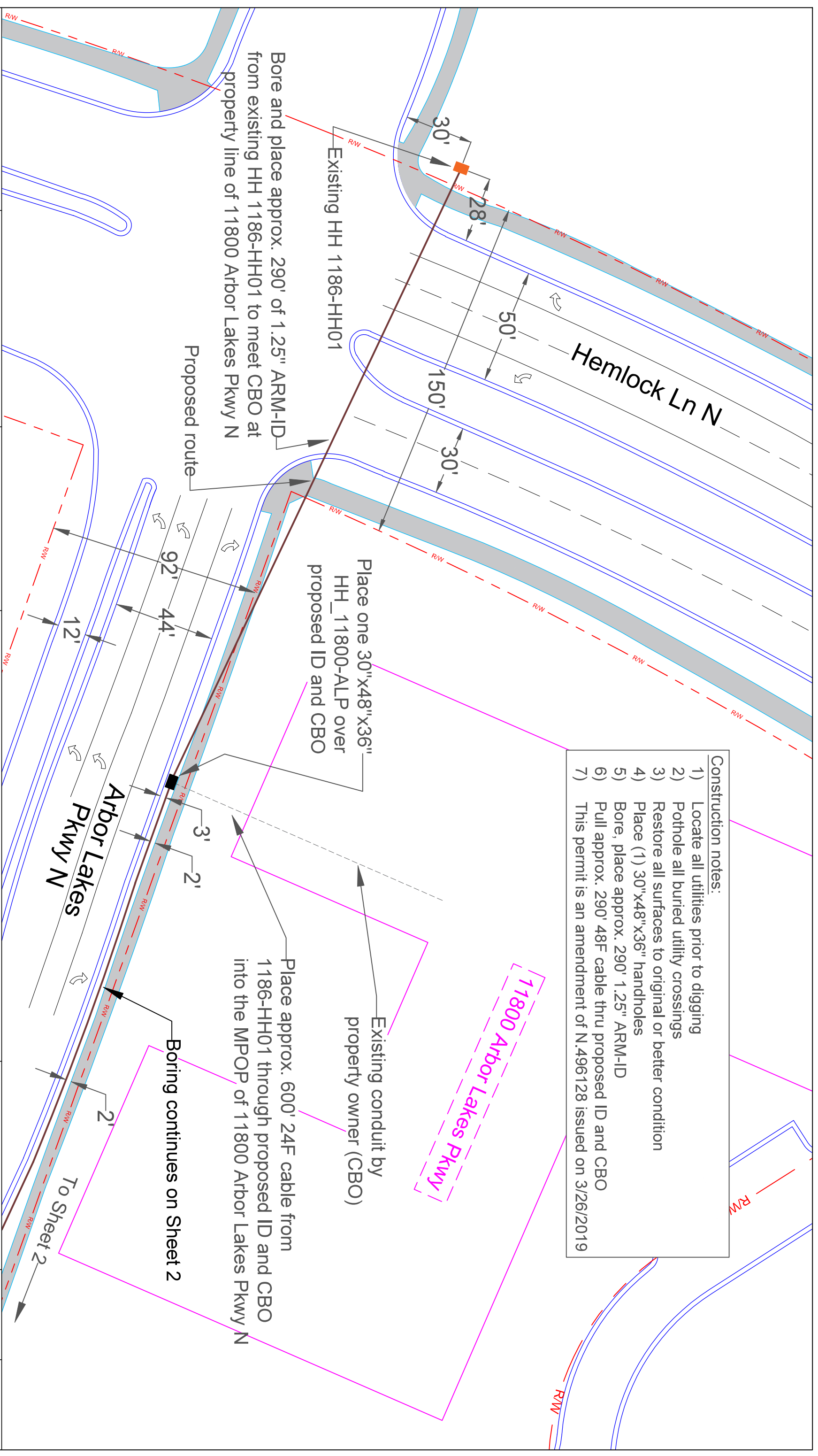


- Construction notes:**
- 1) Locate all utilities prior to digging
  - 2) Pothole all buried utility crossings
  - 3) Restore all surfaces to original or better condition
  - 4) Place (1) 30"x48"x36" handholes
  - 5) Bore, place approx. 290' 1.25" ARM-ID
  - 6) Pull approx. 290' 48F cable thru proposed ID and CBO
  - 7) This permit is an amendment of N.496128 issued on 3/26/2019



425 MONROE ST  
ANGKA, MN 55303

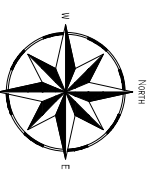
ENGINEER: TOM RATHMAN  
PHONE: (651) 512-5443  
FAX: (763) 712-5023  
EMAIL: THOMAS.RATHMAN@CENTURLINK.COM

WC: OSSEMNU  
JOB: N.496128  
ISSUE DATE: 05/21/2019

DRAWING SYMBOLS

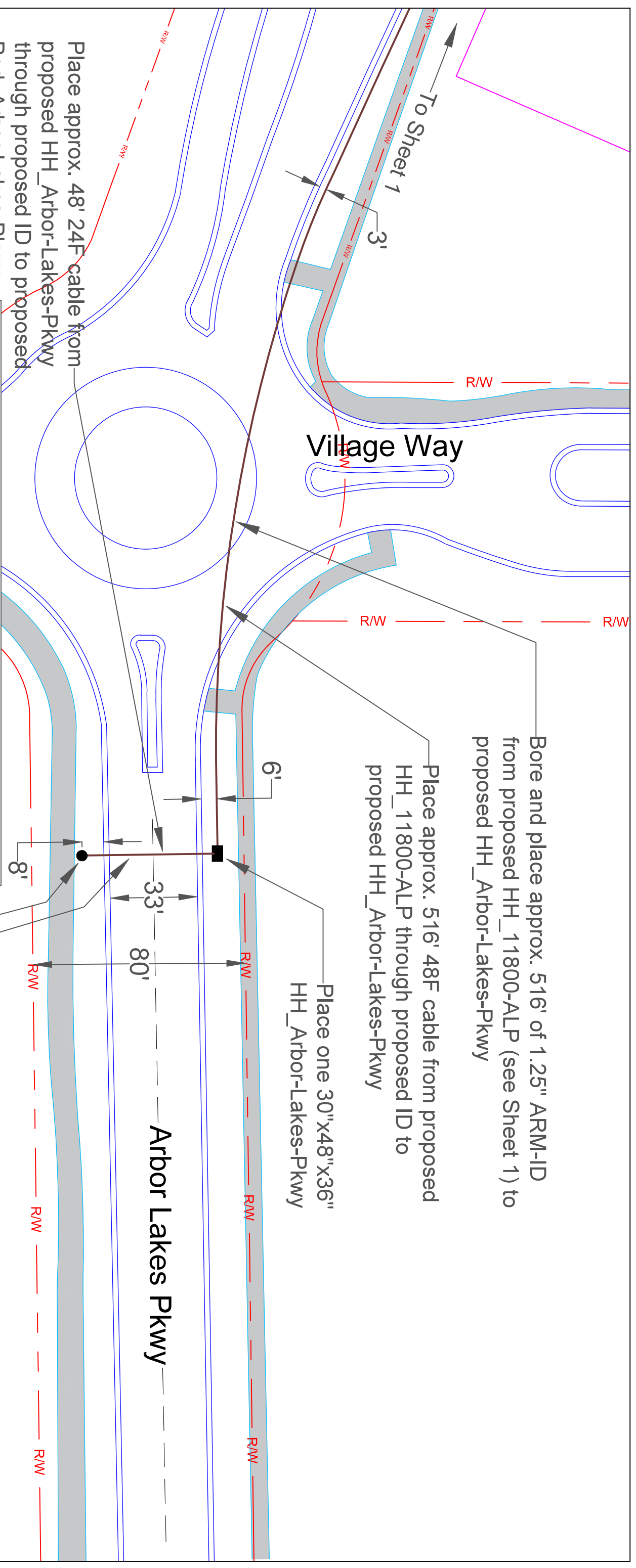
THE SUBSURFACE UTILITY INFORMATION IN THIS PLAN IS QUALITY LEVEL D. THIS QUALITY LEVEL WAS DETERMINED ACCORDING TO THE GUIDELINES OF CI/ASCE38-2, ENTITLED GUIDELINES FOR THE COLLECTION AND DEPICTION OF EXISTING SUBSURFACE UTILITY DATA.

CALL BEFORE DIGGING  
1-800-252-1166



SCALE: N/A

SHEET: 01 OF 02



Bore and place approx. 516' of 1.25" ARM-ID from proposed HH\_11800-ALP (see Sheet 1) to proposed HH\_Arbor-Lakes-Pkwy

Place approx. 516' 48F cable from proposed HH\_11800-ALP through proposed ID to proposed HH\_Arbor-Lakes-Pkwy

Place one 30"x48"x36" HH\_Arbor-Lakes-Pkwy

Arbor Lakes Pkwy

Bore and place approx. 48' of 1.25" ARM-ID from proposed HH\_Arbor-Lakes-Pkwy to proposed Ped\_Arbor-Lakes\_Pkwy

Place one 8" pedestal Ped\_Arbor-Lakes\_pkwy over end of conduit

Place approx. 48' 24F cable from proposed HH\_Arbor-Lakes-Pkwy through proposed ID to proposed Ped\_Arbor-Lakes-Pkwy

**Construction notes:**

- 1) Locate all utilities prior to digging
- 2) Pothole all buried utility crossings
- 3) Restore all surfaces to original or better condition
- 4) Place (1) 30"x48"x36" handholes
- 5) Place (1) 8" pedestal
- 6) Bore, place approx. 564' 1.25" ARM-ID
- 7) Place 48F cable 516' through proposed ID
- 8) Place 24F cable 48' through proposed ID
- 9) This permit is an amendment of N.496128 issued on 3/26/2019

**DRAWING SYMBOLS**

THE SUBSURFACE UTILITY INFORMATION IN THIS PLAN IS QUALITY LEVEL D. THIS QUALITY LEVEL WAS DETERMINED ACCORDING TO THE GUIDELINES OF CI/ASCE38-2, ENTITLED GUIDELINES FOR THE COLLECTION AND DEPICTION OF EXISTING SUBSURFACE UTILITY DATA.

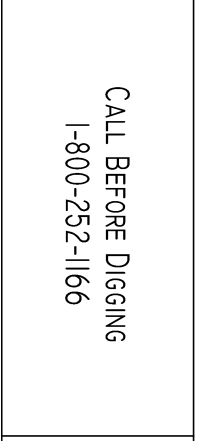


**CenturyLink**  
425 MONROE ST  
ANGKA, MN 55303

ENGINEER: TOM RATHMAN  
PHONE: (651) 312-5443  
FAX: (763) 712-5023  
EMAIL: THOMAS.RATHMAN@CENTURLINK.COM

WC: OSSEMNU  
JOB: N.496128  
ISSUE DATE: 05/21/2019

CALL BEFORE DIGGING  
1-800-252-1166



SCALE: N/A  
SHEET: 02 OF 02