



MCImetro

ACCESS TRANSMISSION SERVICES CORP
D/B/A VERIZON ACCESS TRANSMISSION
OUTSIDE PLANT CONSTRUCTION
FIBER OPTIC CABLE ROUTE

GUSHERS

SITE CODE: HENNMN

BH06 / GOLDEN VAL-VICKSBURG / 074GUSHERS
MAPLE GROVE, MN

PROJECT STATUS: ISSUED FOR CONSTRUCTION
STATUS DATE: 9/29/2020



INDEX SHEET

- 1.....COVER SHEET
- 2.....INDEX SHEET
- 3.....LOCATION MAP
- 4.....CONTACT SHEET
- 5.....GENERAL NOTES/CLARIFICATION SHEET
- 6.....SYMBOLS KEY
- 7.....PROJECT CLARIFICATION SUMMARY/BOM
- 8-19.....CONSTRUCTION DRAWINGS
- 8A-19A.....CONSTRUCTION DRAWINGS W/AERIAL IMAGES
- A1.....FIBER MAP/SPLICE DIAGRAM
- A2.....SINGLE LINE DIAGRAM
- T1-T6.....MCI TYPICALS
- ADDITIONAL 3RD PARTY DOCUMENTATION

PROJECT: 074GUSHERS
 BH06 / GOLDEN VAL-VICKSBURG
 MAPLE GROVE, MN

CLARIFICATION NO.	QUANTITY

MCI
 ACCESS TRANSMISSION SERVICES, LLC

OUTSIDE PLANT CONSTRUCTION
 TITLE: FIBER OPTIC CABLE ROUTE
 074GUSHERS

DATE: 2/8/18
ENGINEER: NW
DRAWN BY: NW

REVISIONS		
DATE	DESCRIPTION	INITIAL
2/8/18	CONST PKG	NW
3/23/18	QC	SJH

EXCEPT AS MAY BE OTHERWISE PROVIDED BY CONTRACT, THESE DRAWINGS AND SPECIFICATIONS SHALL REMAIN THE PROPERTY OF MCI COMMUNICATIONS SERVICES, INC., BOTH BEING ISSUED IN STRICT CONFIDENCE AND SHALL NOT BE REPRODUCED, COPIED, OR USED FOR ANY PURPOSE WITHOUT SPECIFIC WRITTEN PERMISSION.

SCALE

HORIZONTAL: NTS
VERTICAL: NTS

MP _____ TO MP _____

SHEET 2 **OF** 19

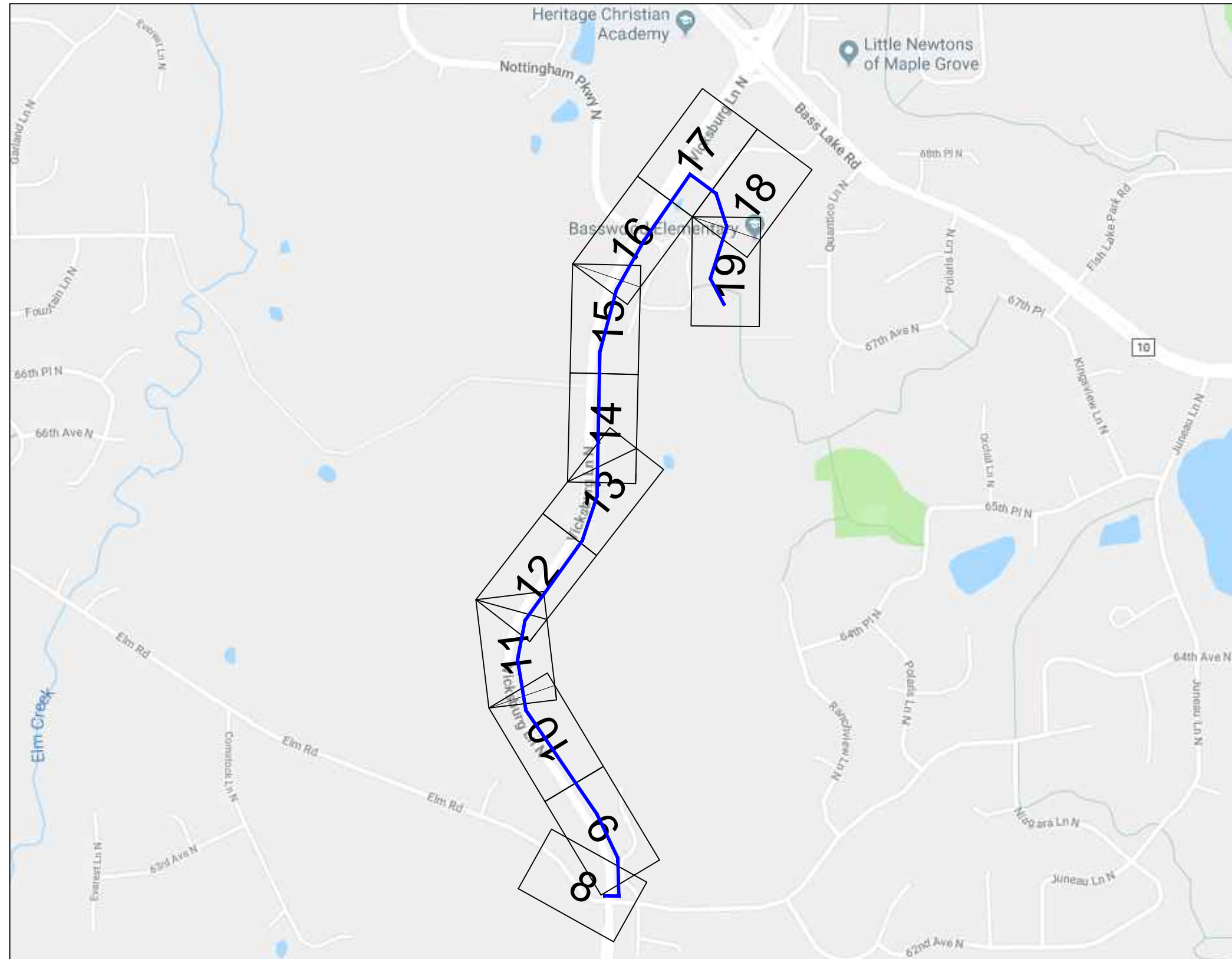
FILE: 074GUSHERS.DWG

LOCATION MAP

PROPOSED BURIED CABLE

PROPOSED AERIAL CABLE

OVER-PULL CABLE



PROJECT: 074GUSHERS

BH06 / GOLDEN VAL-VICKSBURG

MAPLE GROVE, MN

CLARIFICATION NO.	QUANTITY

MCI metro
ACCESS TRANSMISSION SERVICES, LLC

MCI
OUTSIDE PLANT CONSTRUCTION

TITLE: FIBER OPTIC CABLE ROUTE
074GUSHERS

DATE: 9/29/20

ENGINEER: NW

DRAWN BY: NW

REVISIONS

DATE	DESCRIPTION	INITIAL
2/8/18	CONST PKG	NW
3/23/18	QC	SJH
7/6/18	REVISION	IWF
9/29/20	REV: DB TO OP	KV

EXCEPT AS MAY BE OTHERWISE PROVIDED BY CONTRACT, THESE DRAWINGS AND SPECIFICATIONS SHALL REMAIN THE PROPERTY OF MCI COMMUNICATIONS SERVICES, INC., BOTH BEING ISSUED IN STRICT CONFIDENCE AND SHALL NOT BE REPRODUCED, COPIED, OR USED FOR ANY PURPOSE WITHOUT SPECIFIC WRITTEN PERMISSION.

SCALE

HORIZONTAL: NTS

VERTICAL: NTS

MP _____ TO MP _____

SHEET 3 **OF** 19

FILE: 074GUSHERS.DWG



PROJECT: 074GUSHERS

BH06 / GOLDEN VAL-VICKSBURG

MAPLE GROVE, MN

CLARIFICATION NO. QUANTITY

Table with 2 columns: CLARIFICATION NO. and QUANTITY. Multiple empty rows.

MCI metro ACCESS TRANSMISSION SERVICES, LLC



OUTSIDE PLANT CONSTRUCTION

TITLE: FIBER OPTIC CABLE ROUTE 074GUSHERS

DATE: 2/8/18

ENGINEER: NW

DRAWN BY: NW

REVISIONS

Table with 3 columns: DATE, DESCRIPTION, INITIAL. Contains revision records for 2/8/18 and 3/23/18.

EXCEPT AS MAY BE OTHERWISE PROVIDED BY CONTRACT, THESE DRAWINGS AND SPECIFICATIONS SHALL REMAIN THE PROPERTY OF MCI COMMUNICATIONS SERVICES, INC. BOTH BEING ISSUED IN STRICT CONFIDENCE AND SHALL NOT BE REPRODUCED, COPIED, OR USED FOR ANY PURPOSE WITHOUT SPECIFIC WRITTEN PERMISSION.

SCALE

HORIZONTAL: NTS

VERTICAL: NTS

MP TO MP

SHEET 5 OF 19

FILE: 074GUSHERS.DWG

GENERAL NOTES

1. VERIZON BUSINESS COMPRISES THE FOLLOWING OPERATING ENTITIES:

- MCI COMMUNICATIONS SERVICES, INC.
- MCI METRO ACCESS TRANSMISSION SERVICES, LLC
- MCI METRO ACCESS TRANSMISSION SERVICES OF VIRGINIA, INC.
- MCI METRO ACCESS TRANSMISSION SERVICES OF MASSACHUSETTS, INC.
- METROPOLITIAN FIBER SYSTEMS OF NEW YORK, INC.

2. ALL WORK TO BE PERFORMED IN STRICT ACCORDANCE WITH THE APPLICABLE CODES OR REQUIREMENTS OF ANY REGULATING GOVERNMENTAL AGENCY, VERIZON BUSINESS AND THE RIGHT-OF-WAY GRANTOR.

3. LOCATIONS OF SOME OF THE PHYSICAL FEATURES WERE OBTAINED FROM DATED RAILROAD EVALUATION MAPS OR OTHER DRAWINGS AND MAY NOT BE AS SHOWN OR DEPICTED ON THESE DRAWINGS.

4. UNDERGROUND UTILITIES HAVE BEEN PLOTTED FROM AVAILABLE RECORDS AND FIELD OBSERVATIONS BUT ARE NOT NECESSARILY EXACT. THEREFORE, UTILITY LOCATIONS WILL BE VERIFIED AT LEAST 100 FEET IN ADVANCE OF TRENCHING OR PLOWING, SO THAT CHANGES IN CABLE PLACEMENT CAN BE MADE IN THE EVENT OF CONFLICT.

5. ANY AND ALL IMPROVEMENTS, SUCH AS ASPHALT OR CONCRETE PAVEMENT, CURBS, GUTTERS, WALKS, DRAINAGE DITCHES, EMBANKMENTS, SHRUBS, TREES, GRASS SOD, ETC., IF DAMAGED, SHALL BE RESTORED TO ORIGINAL CONDITION.

6. EQUIPMENT TYPES SPECIFIED HEREIN (IE: "BACKHOE", SWAMP PLOW" ETC.) ARE SUGGESTIONS ONLY AND ARE NOT INTENDED AS REQUIREMENTS.

7. SHORING OF EXCAVATIONS AND TRENCHES IN ACCORDANCE WITH OSHA REGULATIONS IS MANDATORY.

8. BURIED CABLE MARKERS WILL BE PLACED AT ALL UNDERGROUND UTILITY LOCATIONS AND ALL OTHER LOCATIONS IN ACCORDANCE WITH THE CONSTRUCTION DRAWINGS AND THE OUTSIDE PLANT HANDBOOK.

9. ALL 2" ID CONDUIT WILL BE HDPE, OR AS SPECIFIED.

10. UNDERGROUND CONDUIT WILL BE PLACED AT 36" MINIMUM COVER UNLESS OTHERWISE SPECIFIED ON THE CONSTRUCTION DRAWINGS.

CLARIFICATION NOTES

- 1. STATION
2. LOCATION
3. CLARIFICATION NO. AND MINIMUM COVER
4. QUANTITY LINEAR FOOTAGE/SQUARE FOOTAGE, SIZE OF MANHOLE/HANDHOLE SIZE OF PULL/SPLICE BOX, DIMENSION OF WALL, HEIGHT/CLASS/TYPE OF POLE
5. TYPICAL DRAWING NO. AND TYPICAL DETAIL DRAWING NUMBER
6. PLANT ACCOUNTING CODE
7. SPECIFIED CONDUIT, HANDHOLE/MANHOLE NO., SPECIFIED PURPOSE AND MATERIAL, BRIDGE NO. AND RAILROAD STATION, MATERIAL, POLE NO.

Table with 7 rows and 1 column, likely for stationing or location tracking.

ADDENDUM NOTES

CLARIFICATION NOTES (CONTINUED)

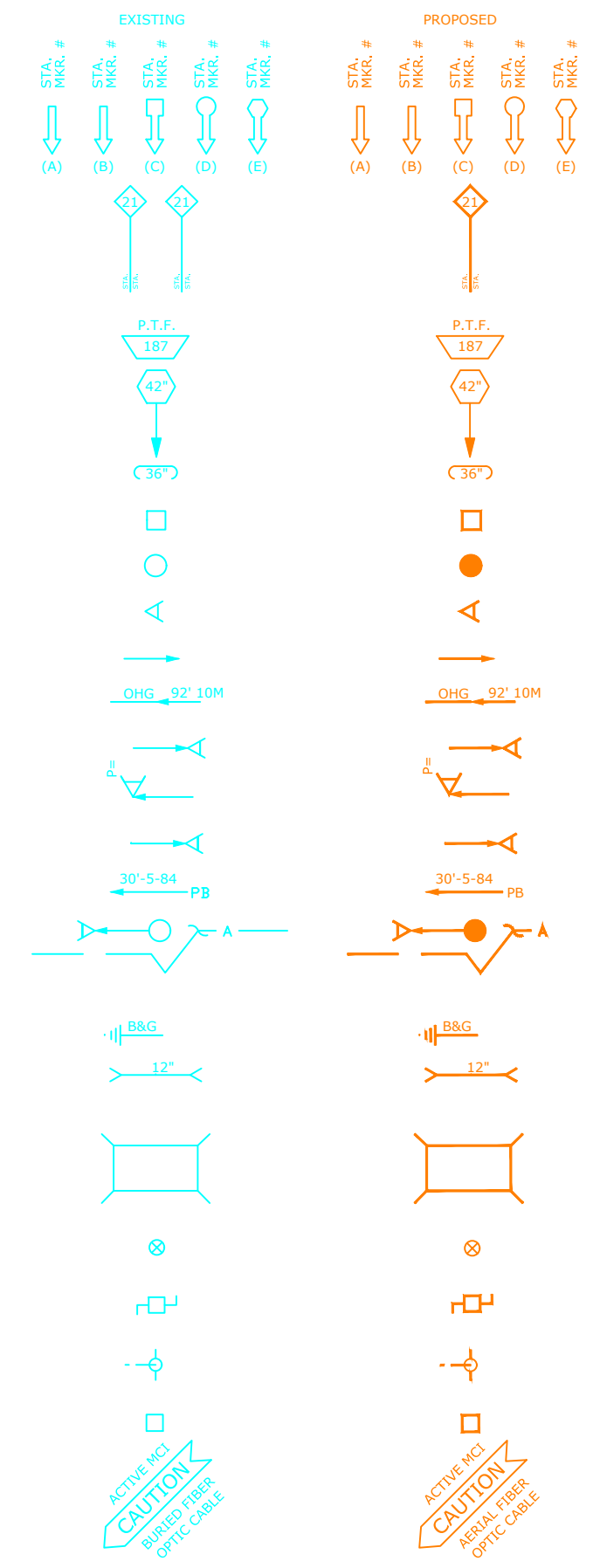
Table with 3 columns: Stationing (e.g., 100 110, 200 210), Clarification No., and Description of work items like JACK AND DRY BORE CONDUIT(S), PLACE CONDUIT, etc.

GENERAL NOTES

- 1. CONTRACTOR MUST OBTAIN LOCATES PRIOR TO DISTURBING THE GROUND.
2. CONTRACTOR MUST HAVE A COPY OF THE APPROVED PERMIT FROM THE APPROPRIATE AGENCY ON THE JOBSITE AT ALL TIMES.
3. ALL CABLE WILL BE PLACED AT STANDARD MINIMUM DEPTH. (MCI STANDARD IS 48" DEEP UNLESS OTHERWISE DIRECTED BY A MCI REPRESENTATIVE.)
4. ANY LANDSCAPING WILL BE REPLACED TO EQUAL OR BETTER THAN THAT WHICH EXISTED PRIOR TO WORK.
5. PROJECT SITE WILL BE PROPERLY SECURED PRIOR TO THE END OF EACH DAY.
6. ALL WORK IS TO BE IN ACCORDANCE WITH ALL AUTHORITIES HAVING JURISDICTION IN THE WORK ZONE.
7. CONTRACTORS ARE ADVISED TO CONTACT MCI FOR ANY ADDITIONAL INFORMATION OR CLARIFICATION CONCERNING SCOPE OF WORK OR THE REQUIREMENTS NECESSARY FOR PROJECT COMPLETION.
8. CONTRACTOR IS RESPONSIBLE TO FIELD VERIFY ALL DIMENSIONS, QUANTITIES AND EXISTING CONDITIONS PRIOR TO CONSTRUCTION. IF A SIGNIFICANT CHANGE TO THE RUNNING LINE IS NEEDED, PLEASE CONTACT YOUR MCI REPRESENTATIVE BEFORE PROCEEDING.
9. BEFORE CONSTRUCTION BEGINS, CONTRACTOR SHALL TAKE APPROPRIATE PRECAUTIONS TO AVOID ANY POTENTIAL OBSTRUCTIONS PRIOR TO PROCEEDING WITH WORK.
10. NO CONSTRUCTION ON PRIVATE PROPERTY WILL COMMENCE UNTIL APPROVAL IS GIVEN BY THE APPROPRIATE MCI EMPLOYEE.
11. CONTRACTOR SHALL NOT PROCEED WITH WORK UNTIL THEY HAVE RECEIVED A PURCHASE ORDER AND HAVE BEEN DIRECTED TO DO SO BY AN AUTHORIZED MCI REPRESENTATIVE.
12. CONTRACTOR SHALL NOT EXCEED THE PURCHASE ORDER VALUE WITHOUT AUTHORIZATION IN WRITING FROM THE APPROPRIATE MCI REPRESENTATIVE.
13. AS-BUILTS WILL BE REQUIRED FOR EACH PROJECT INCLUDING CABLE FOOTAGE SEQUENTIALS AT EVERY ACCESS POINT, SLACK LOOP, SPLICE LOCATION, POLE AND TERMINATION POINT. CONTRACTOR SHALL PROVIDE NOTES OF ALL CHANGES IN DEPTHS, RUNNING LINES, MH/HH LOCATIONS, AND ANY OTHER APPLICABLE NOTES TO DEPICT THE WORK THAT TOOK PLACE. NOTE: ALL MAJOR CHANGES NEED TO BE PRE-APPROVED BY AN AUTHORIZED MCI EMPLOYEE PRIOR TO STARTING THE WORK.
14. THE SUBSURFACE UTILITY INFORMATION IN THIS PLAN IS UTILITY QUALITY LEVEL D. THIS UTILITY QUALITY LEVEL WAS DETERMINED ACCORDING TO THE GUIDELINES OF CI/ASCE 38-02, ENTITLED STANDARD GUIDELINES FOR THE COLLECTION AND DEPICTION OF EXISTING SUBSURFACE UTILITY DATA. IT SHALL BE THE CONTRACTORS RESPONSIBILITY TO UTILIZE THE GOPHER STATE ONE CALL EXCAVATION NOTICE SYSTEM REQUIRED MN STATUTE, CHAPTER 216D FOR ALL UNDERGROUND UTILITY LOCATIONS.

SYMBOLS KEY

BURIED CABLE	EXISTING 	PROPOSED 	STEEL MARKER AND SIGN-(A) ALUMINUM "HUB"-STYLE MARKER-(B) FLAT MARKER-(C) TUBULAR MARKER-(D) TUBULAR MARKER, & ISOLATOR PROTECTOR-(E)
AERIAL CABLE			
SUBMARINE CABLE			
FOGWIRE CABLE			
DIRECT BURIED HDPE			MILE POST MARKER NOTE: DASHED = NOT FOUND IN FIELD
PVC OR SPLIT PVC CONDUIT			
BSP/GSP OR SPLIT BSP/GSP CONDUIT			
STEEL CASING			
REMOVE AND RESTORE ASPHALT OR CONCRETE (WIDTH AS INDICATED)			
CORE BORE			
JACK AND BORE			
DIRECTIONAL BORE			
FUTURE CABLE			
REMOVE CABLE			
TO BE REMOVED OR ABANDONED (SHOWN FOR HDPE)			
AERIAL UTILITY (ELECTRIC)			
UNDERGROUND UTILITY (TELEPHONE)			
MAIN TRACKS			
AUXILLARY TRACKS			
CENTERLINE			
RIGHT-OF-WAY			
EDGE OF PAVEMENT			
SIDEWALK			
DITCH LINE			
TAX DISTRICT			
CITY, COUNTY OR STATE BOUNDARY LINE			
PROPERTY LINE			
FENCE LINE			
GUARDRAIL			
TOP OF SLOPE			
TOE OF SLOPE			
FACE OF CURB			



PROJECT: 074GUSHERS
BH06 / GOLDEN VAL-VICKSBURG
MAPLE GROVE, MN

CLARIFICATION NO.	QUANTITY

MCImetro
ACCESS TRANSMISSION SERVICES, LLC

OUTSIDE PLANT CONSTRUCTION
TITLE: FIBER OPTIC CABLE ROUTE
074GUSHERS

DATE: 2/8/18
ENGINEER: NW
DRAWN BY: NW

REVISIONS		
DATE	DESCRIPTION	INITIAL
2/8/18	CONST PKG	NW
3/23/18	QC	SJH

EXCEPT AS MAY BE OTHERWISE PROVIDED BY CONTRACT, THESE DRAWINGS AND SPECIFICATIONS SHALL REMAIN THE PROPERTY OF MCI COMMUNICATIONS SERVICES, INC., BOTH BEING ISSUED IN STRICT CONFIDENCE AND SHALL NOT BE REPRODUCED, COPIED, OR USED FOR ANY PURPOSE WITHOUT SPECIFIC WRITTEN PERMISSION.

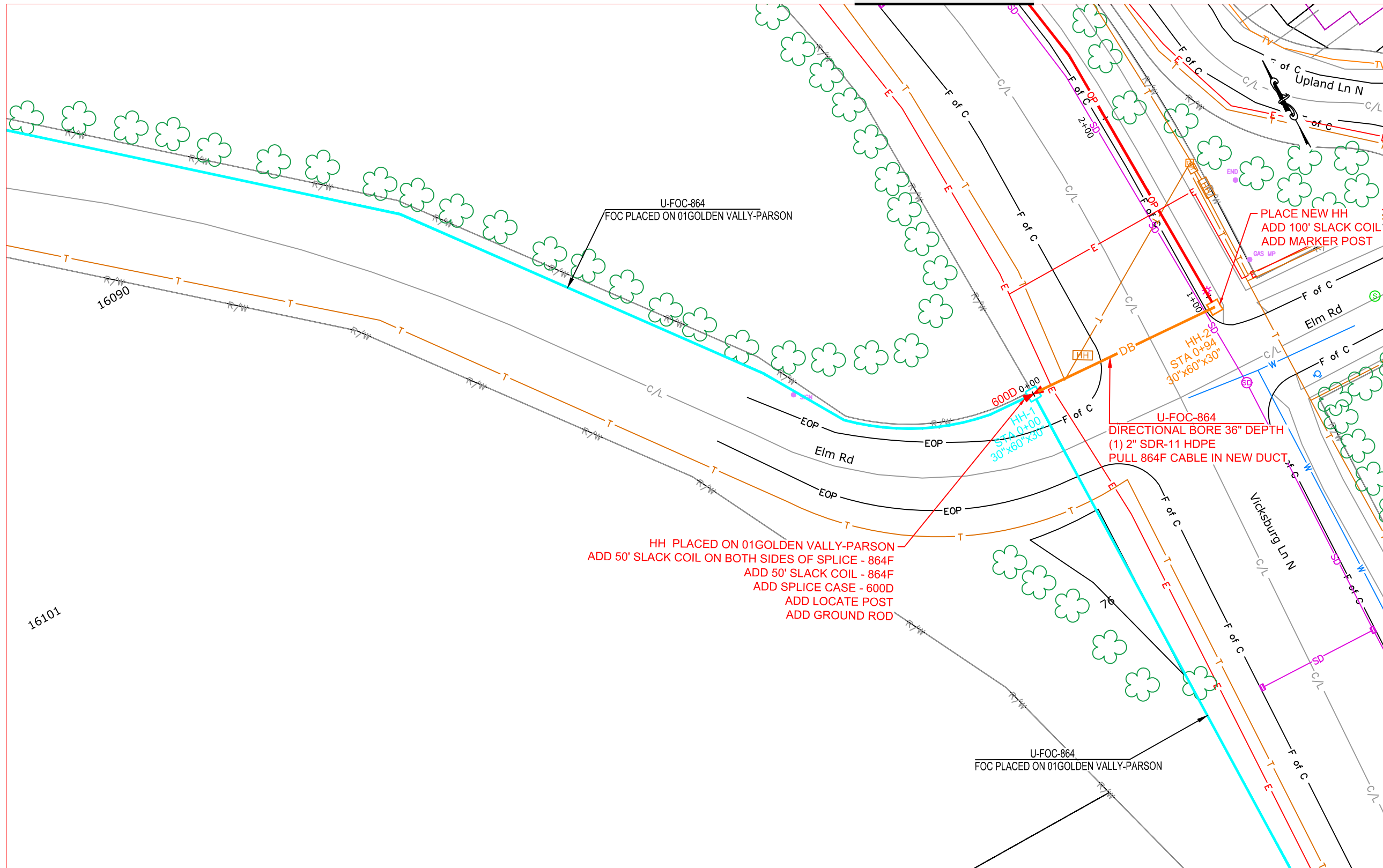
SCALE

HORIZONTAL: NTS
VERTICAL: NTS

MP _____ TO MP _____
SHEET 6 OF 19
FILE: 074GUSHERS.DWG

THE SUBSURFACE UTILITY INFORMATION IN THIS PLAN IS UTILITY QUALITY LEVEL D. THIS UTILITY QUALITY LEVEL WAS DETERMINED ACCORDING TO THE GUIDELINES OF CI/ASCE 38-02, ENTITLED STANDARD GUIDELINES FOR THE COLLECTION AND DEPICTION OF EXISTING SUBSURFACE UTILITY DATA. IT SHALL BE THE CONTRACTORS RESPONSIBILITY TO UTILIZE THE GOPHER STATE ONE CALL EXCAVATION NOTICE SYSTEM REQUIRED MN STATUTE, CHAPTER 216D FOR ALL UNDERGROUND UTILITY LOCATIONS.

MATCH TO SHEET 9



PROJECT: 074GUSHERS

BH06 / GOLDEN VAL-VICKSBURG

MAPLE GROVE, MN

CLARIFICATION NO. QUANTITY

CLARIFICATION NO.	QUANTITY

MCI metro
ACCESS TRANSMISSION SERVICES, LLC

MCI

OUTSIDE PLANT CONSTRUCTION

TITLE: FIBER OPTIC CABLE ROUTE

074GUSHERS

DATE: 9/29/20

ENGINEER: NW

DRAWN BY: NW

REVISIONS

DATE	DESCRIPTION	INITIAL
2/8/18	CONST PKG	NW
3/23/18	QC	SJH
7/6/18	REVISION	IWF
9/29/20	REV: DB TO OP	KV

EXCEPT AS MAY BE OTHERWISE PROVIDED BY CONTRACT, THESE DRAWINGS AND SPECIFICATIONS SHALL REMAIN THE PROPERTY OF MCI COMMUNICATIONS SERVICES, INC., BOTH BEING ISSUED IN STRICT CONFIDENCE AND SHALL NOT BE REPRODUCED, COPIED, OR USED FOR ANY PURPOSE WITHOUT SPECIFIC WRITTEN PERMISSION.

SCALE

HORIZONTAL: 1" = 50'

VERTICAL: 1" = 50'

MP TO MP

SHEET 8 OF 19

FILE: 074GUSHERS